



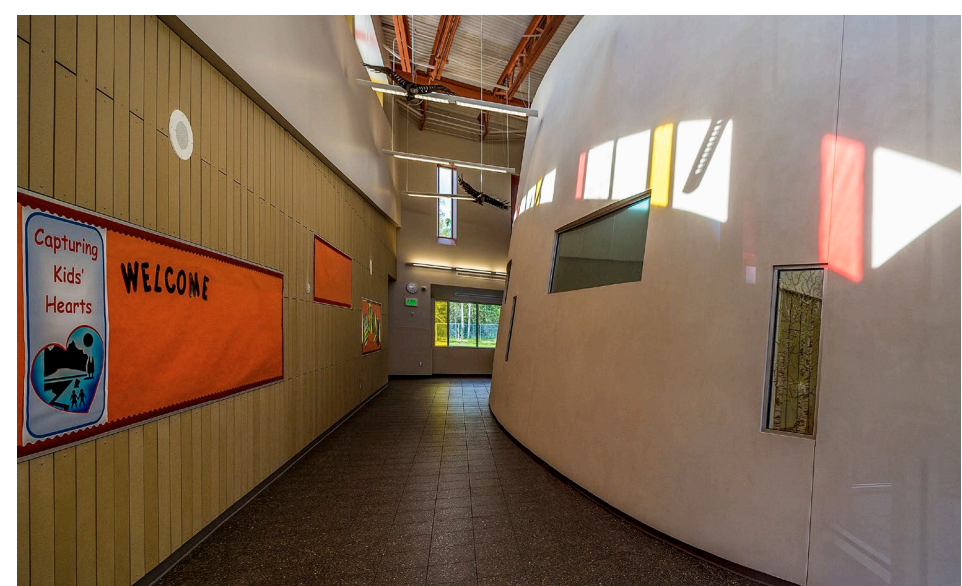
Mat-Su Day School

The Mat-Su Day School provides focused education and support for students with emotional and behavioral challenges who were not successful in their home schools. At the Day School, students have the opportunity to practice academic, social, behavioral, and employability skills necessary for success.

The school's stakeholders identified these guiding principles for the Mat-Su Day School experience: Safety, Sense of Hope, Openness, Non-Institutional, Calm, and Simple. Taken together, they represent an educational environment where these students' efforts have value and are respected.

To ensure safety, the academic spaces are divided into two wings based on age. The academic volumes are small scale, clad in simple materials, and modestly glazed. They appear sheltered. Students access these wings through a common entry hall. From the entry, students have a view through the building to the forested site. This transparency promises students that there is a worthy goal beyond their time at the Day School. The entry and other common spaces are cradled by two folded planes opening outward toward the building's main approach. Visual texture, warm colors, and a band of multicolored glazing wraps them, projecting openness and welcome. Internally, academic and common spaces are separated by threshold walls. These walls define the classrooms as calm, focused zones while enriching common spaces with curving geometry, and a sense of exploration.

LOCATION | Wasilla, Alaska
 OWNER | Matanuska-Susitna Borough
 SUPERINTENDENT | Dr. Deena M. Paramo
 ARCHITECT | Wolf Architecture & NAC Architecture
 CONTRACTOR | F-E Contracting
 PROJECT DATA | 100 student capacity
 | Grades: K-12
 | Cost: \$9.7 million

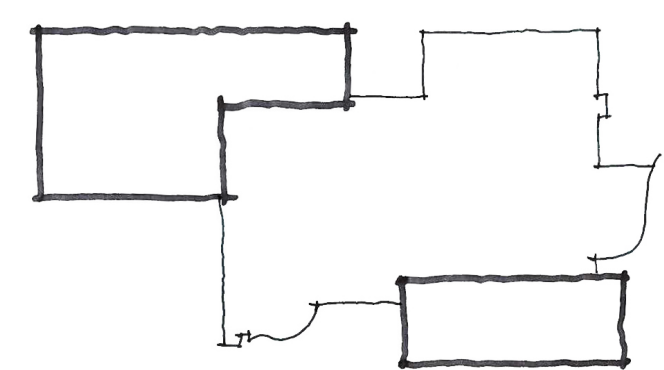


Site Plan

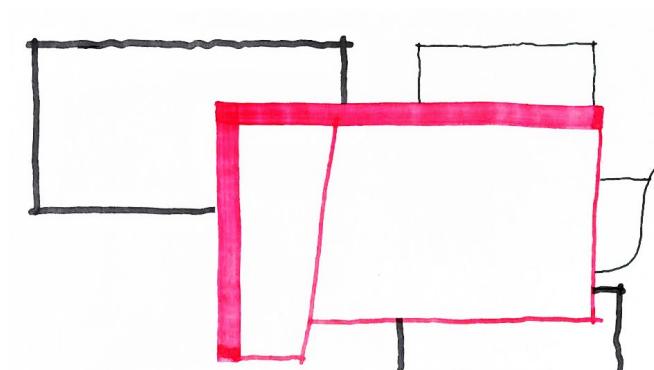
- 1 Elementary Play
- 2 Sledding Hill
- 3 Achievement Courtyard
- 4 Middle and High School Play
- 5 Amphitheater
- 6 Bus Arrival
- 7 Parent/Student Arrival
- 8 Service Yard
- 9 Birch Forest

Floor Plan

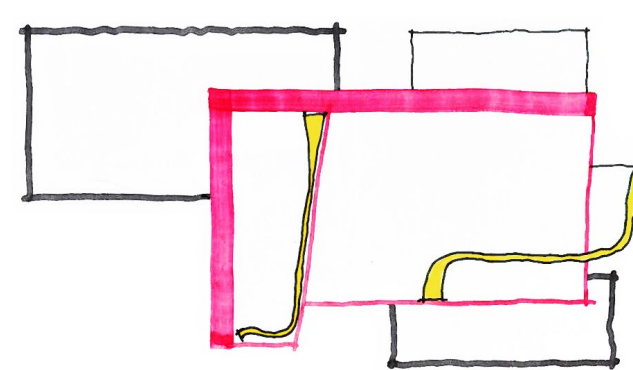
- 1 Entry Hall
- 2 Administration
- 3 Counseling
- 4 Elementary School Classrooms
- 5 Middle School Classrooms
- 6 High School Classrooms (Mechanical Below)
- 7 Life Skills Suite
- 8 Multipurpose Room
- 9 Achievement Classroom
- 10 Service Spaces
- 11 Reading Room
- 12 Media Center (Mechanical Above)



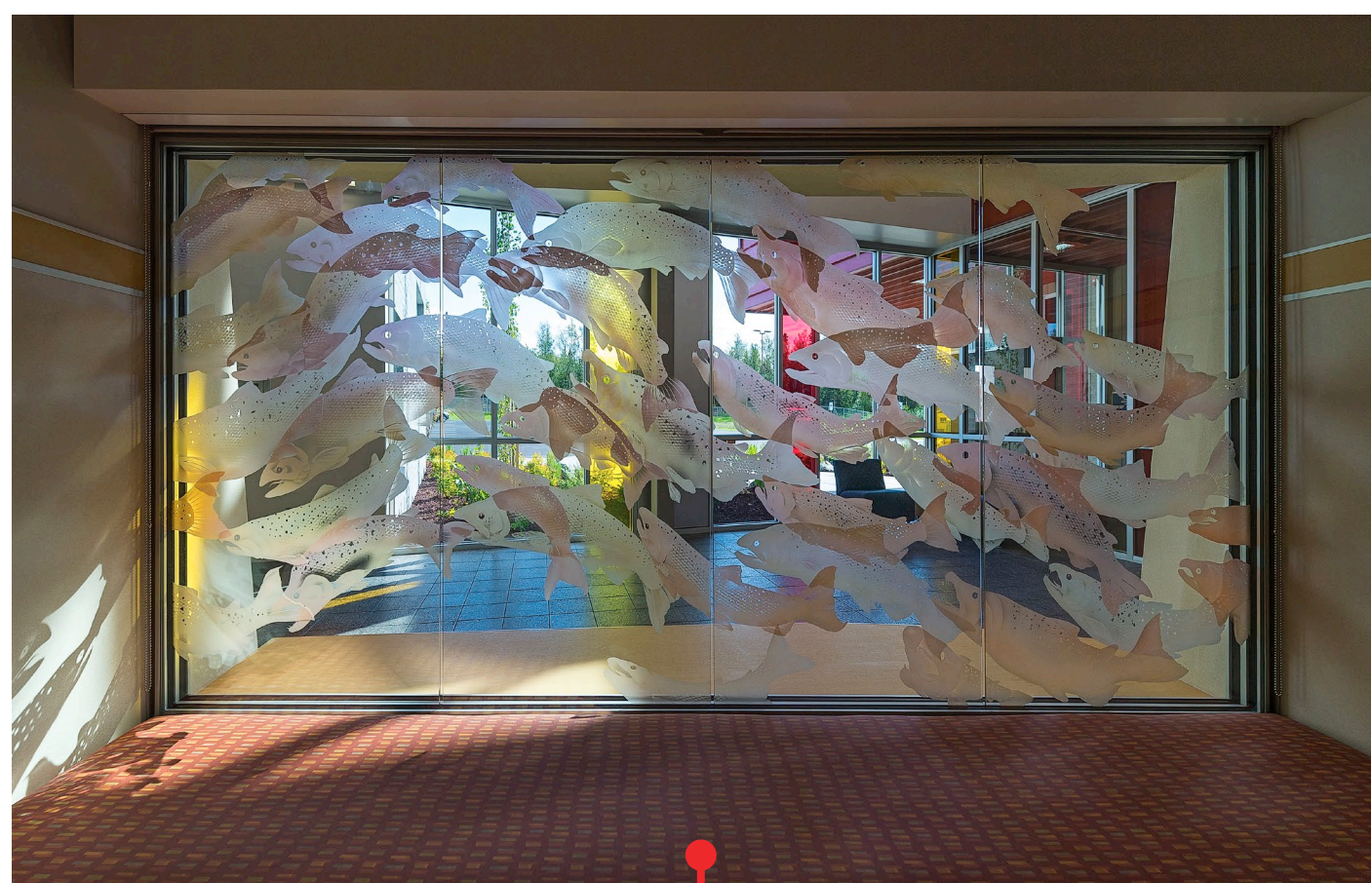
Division



Welcoming



Threshold



| Achievement |

Multipurpose

| Media Center |

Entry Hall |

Administration |

