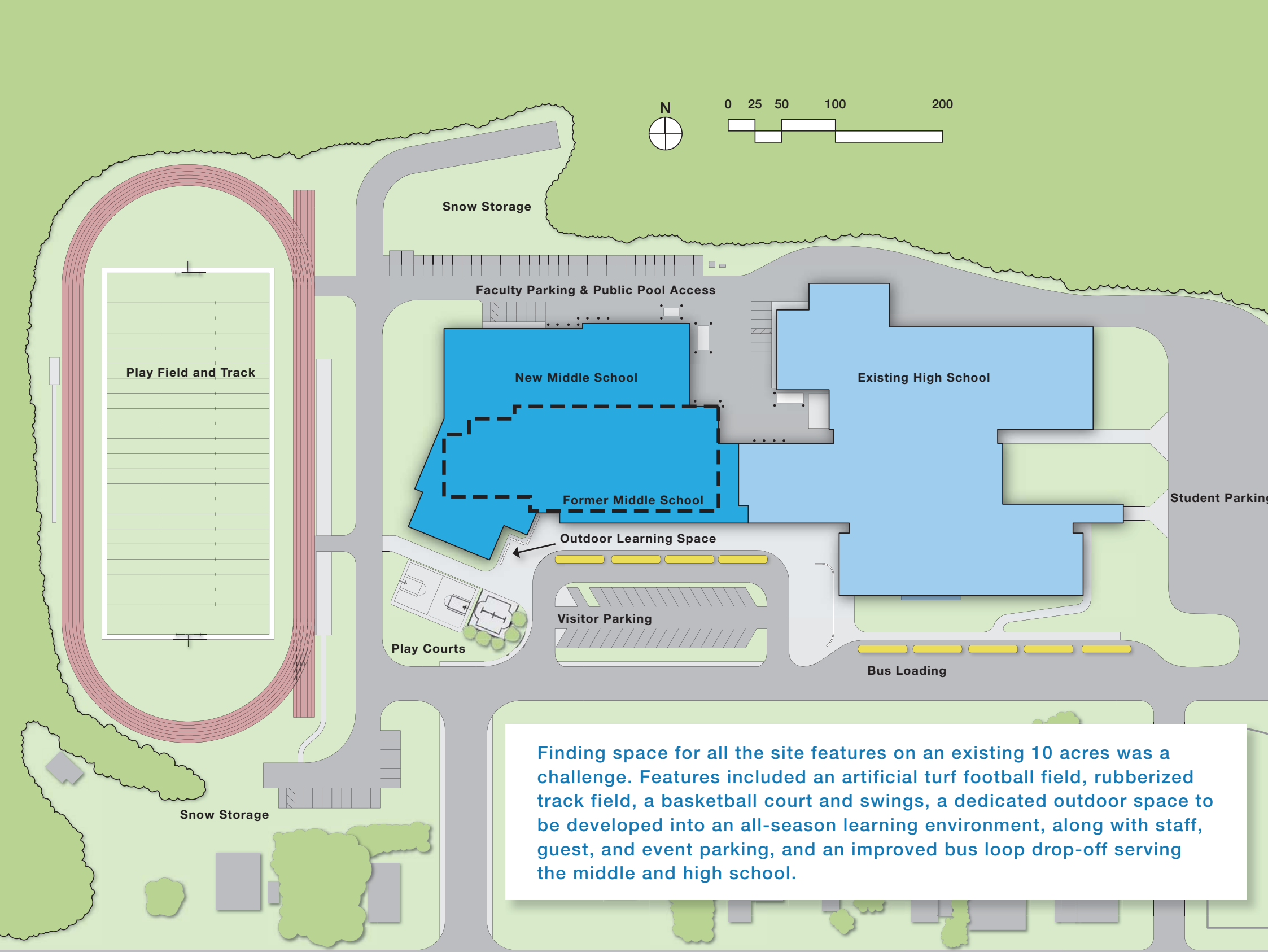
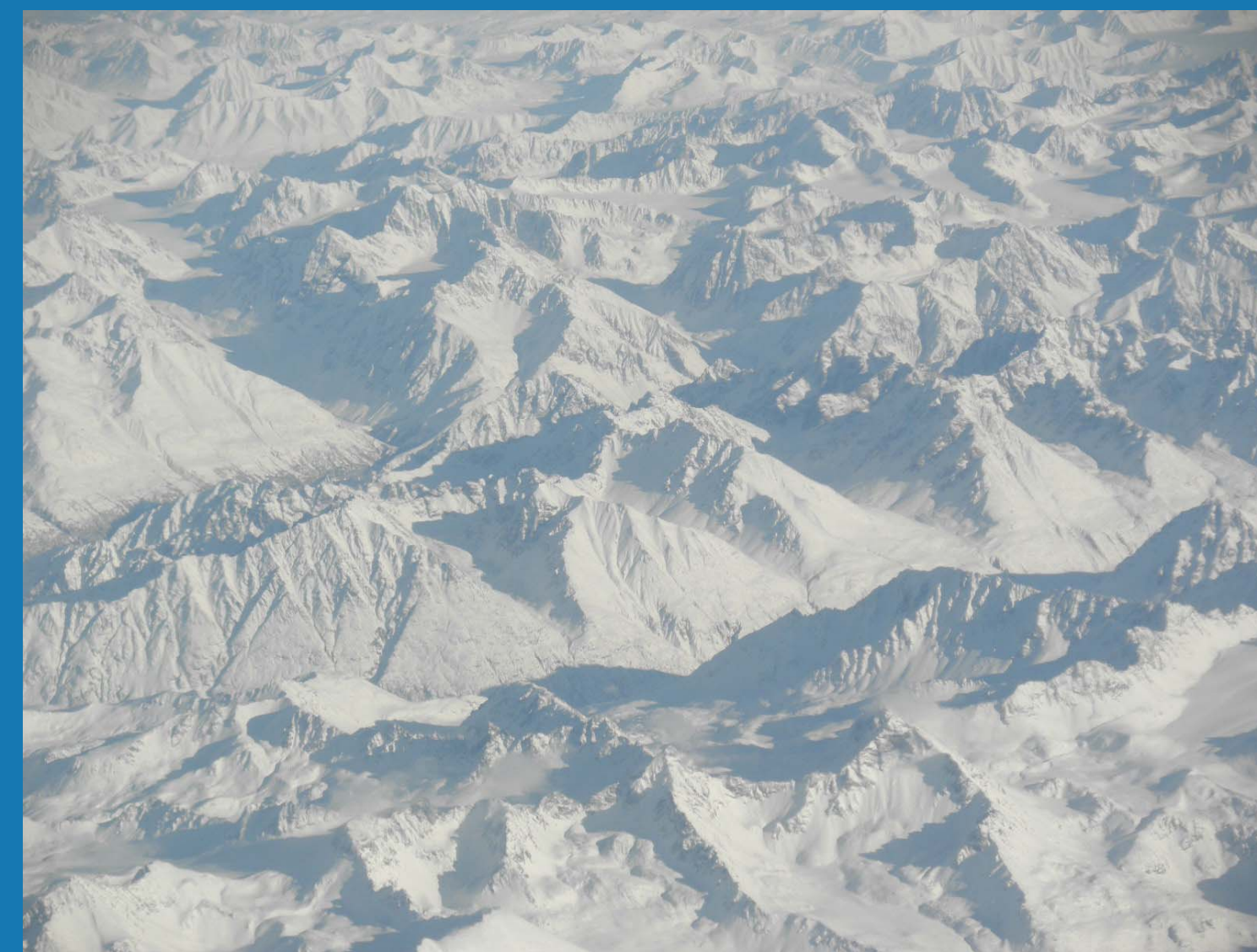


Planning for the Future

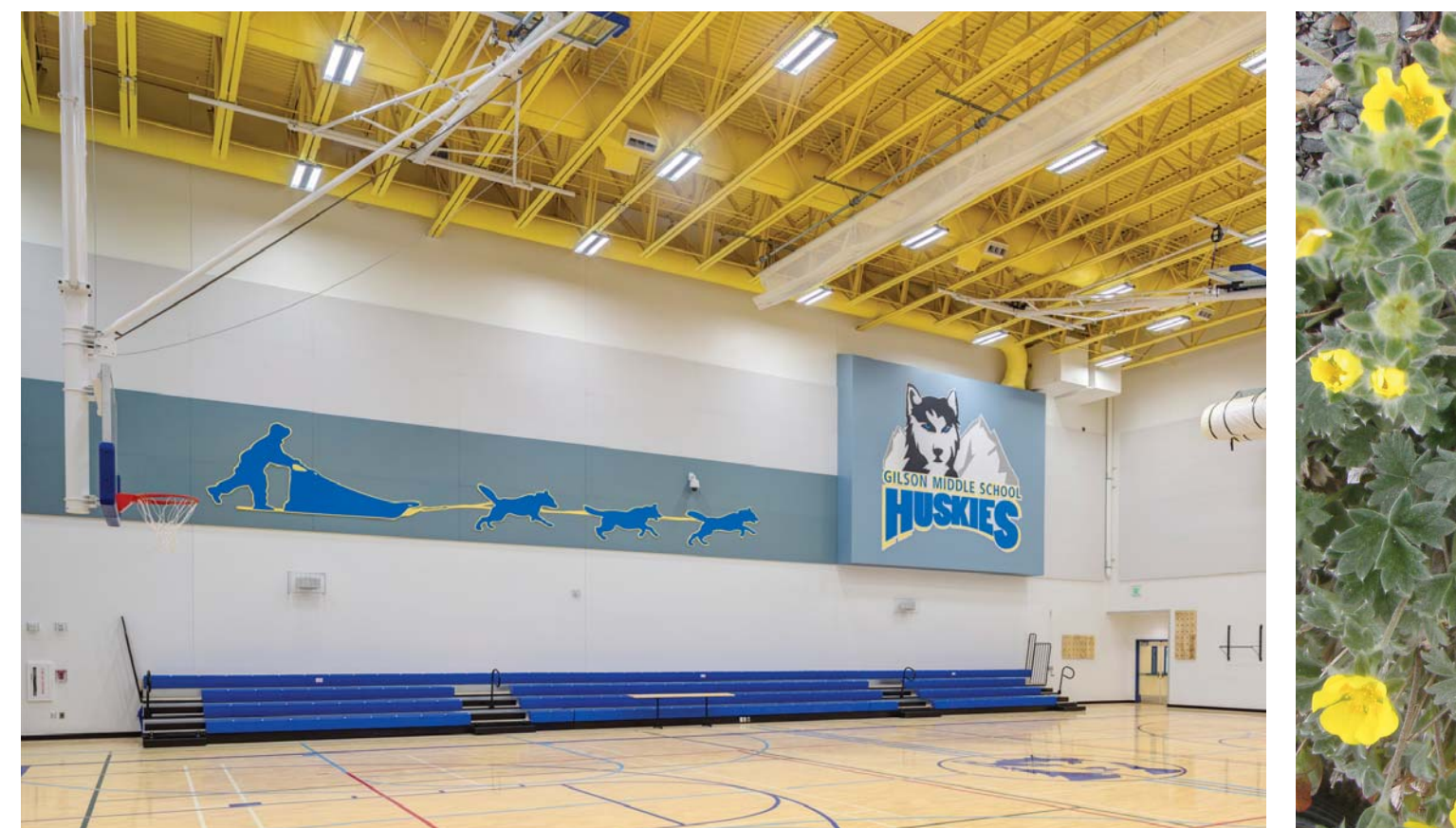


A Gathering Place

The City of Valdez is a tight-knit community of 4,300 people and encompasses a mere 222 square miles of land. The supportive community of Valdez was actively involved in the planning process. It was clear that the middle and high school facilities and fields served an additional purpose besides educating the local youth. These facilities are regularly used outside of school hours by the community as a recreational resource and event location by visiting teams and clubs. The building design paid special attention to these to allow for multiple users, special public events, secure and separate access and entrances.



Located where the ocean meets the mountains, Valdez receives an annual average snowfall of 25.5 feet per year. The design team developed clean and functional exterior spaces responding to the large snow clearing equipment and snow storage needs. The result creates a minimalist landscape around the school, limited in vegetation which can be problematic with high snow loads and winds, but a wonderful, functional and maintainable site that answered Valdez's unique climate.



Flexible Community Space

BETTISWORTH^{NORTH}

ARCHITECTURE PLANNING LANDSCAPE INTERIORS

Design & Construction Team

Architect: Bettisworth North Architects and Planners, Inc.

Charles Bettisworth, AIA
Tracy Vanairsdale, AIA, LEED AP BD+C
Mark Kimerer, ASLA, PLA, CPSI
Trent Schoenemann, AIA
Jon Denton, AIA
Abigale Kron, ASID
Bill Hao

Educational Planners: DeJong Richter
Tracy Richter and Bill DeJong

Project Manager: ARCADIS

Contractor: Dawson Construction

Civil: CRW Engineering Group

Structural: BBFM Engineers

Mechanical & Electrical: RSA Engineering

Geotechnical: Shannon & Wilson

Environmental: NORTECH

Cost Estimating: HMS, Inc.

Photographer: Kevin G. Smith Photography

Construction Success

By issuing a separate, earlier design package for structural engineering, the construction schedule was accelerated by four months which spared staff, students, and administration the stress of moving into the new school over the holiday break. Instead, they were able to start the school year in their new school, completing construction within the length of one school year.

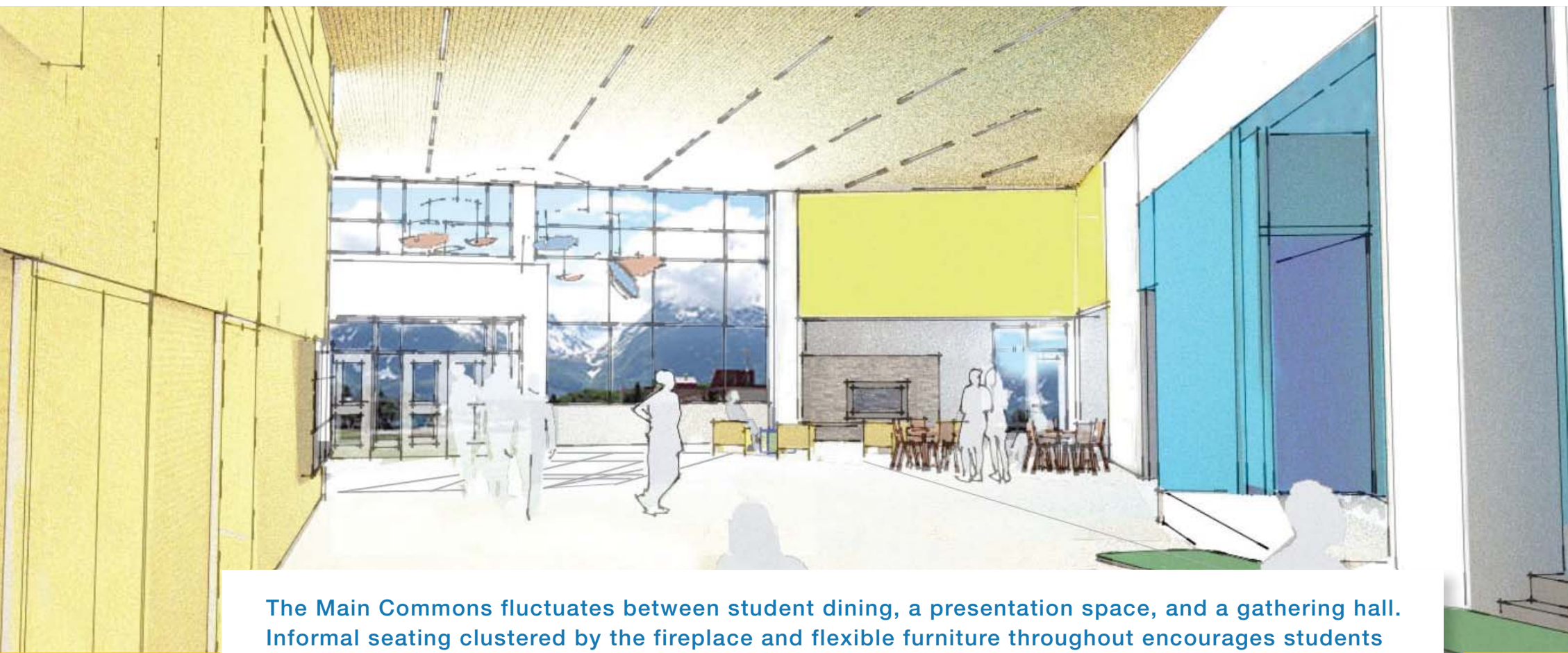


A New School, A New Identity

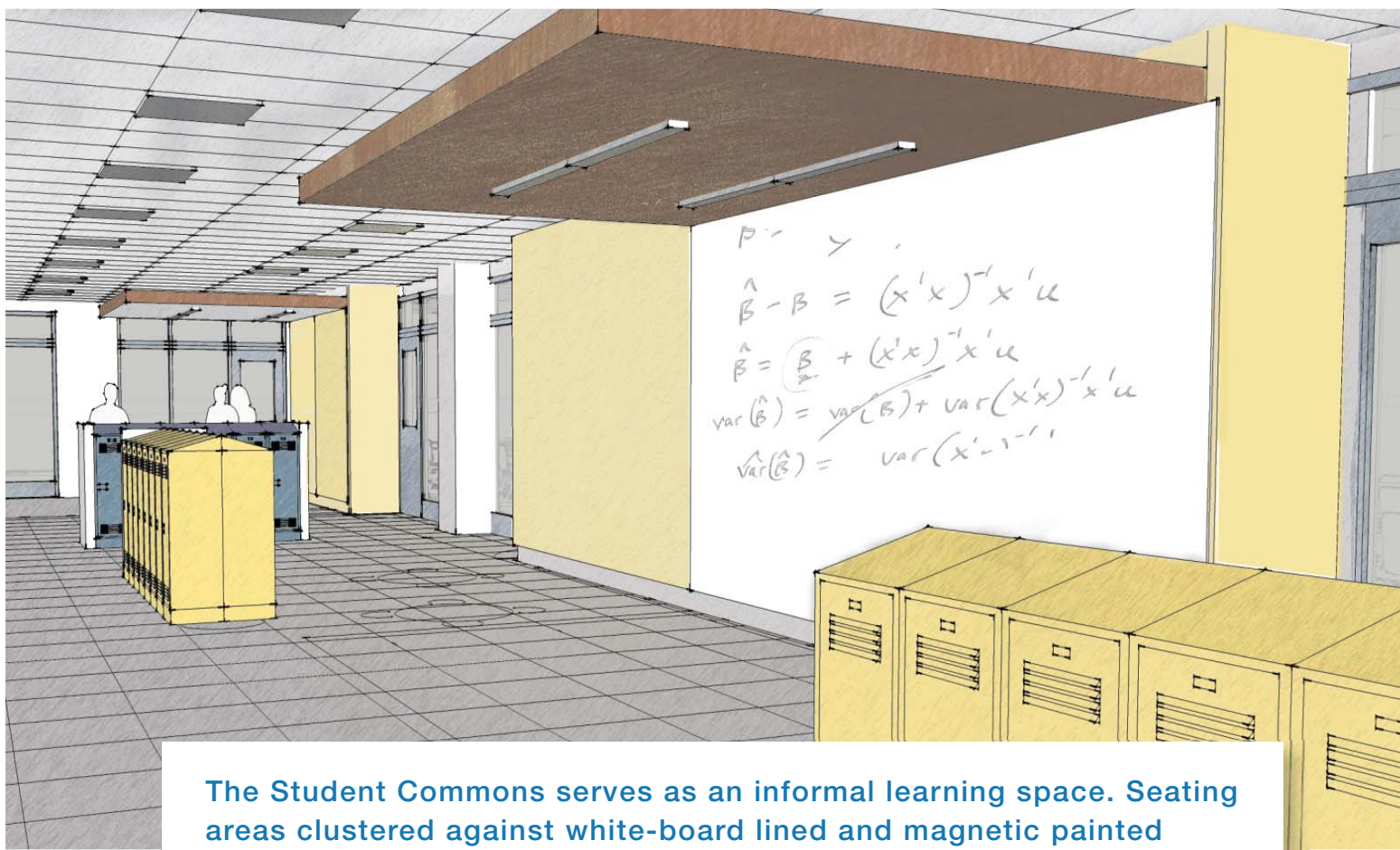
Six original artwork pieces were commissioned and integrated into the school design. Bringing life and energy, these pieces add to the important goal of creating a clear identity to the middle school.

One piece in particular, “Salmon Go to School, Too”, was crafted by interested Valdez students and staff with the artist’s guidance. This art is a source of pride for the local students involved in its creation.

The Gilson Middle School logo was refreshed by student participation in collaboration with Bettisworth North. The new logo adds to the middle school’s unique identity and serves as a source of school pride.



The Main Commons fluctuates between student dining, a presentation space, and a gathering hall. Informal seating clustered by the fireplace and flexible furniture throughout encourages students to socialize and collaborate in a comfortable and inviting environment. Daylight streams into the learning spaces throughout the school day providing a healthy, energizing environment.



The Student Commons serves as an informal learning space. Seating areas clustered against white-board lined and magnetic painted walls allow students to work outside of the classroom structure, yet be in close proximity to teachers and classroom resources.



Active Learning Environment

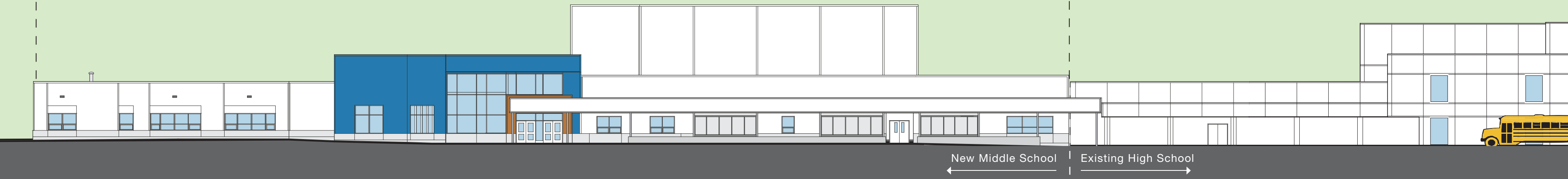


- Core Academic Neighborhood
- Physical Education
- Administration
- Career and Technical Education
- Utilities / Maintenance

The Learning Program

The Core Academic Neighborhood is designed for varying learning styles, group sizes, and potential changes in future student population and inevitable evolution of technologies. The neighborhood can be organized based on individual grade level or departmental groupings.

The Career and Technical Workshop is a place for hands on learning, purposely located closest to the high school for shared use.



Clear and Unique Identity