



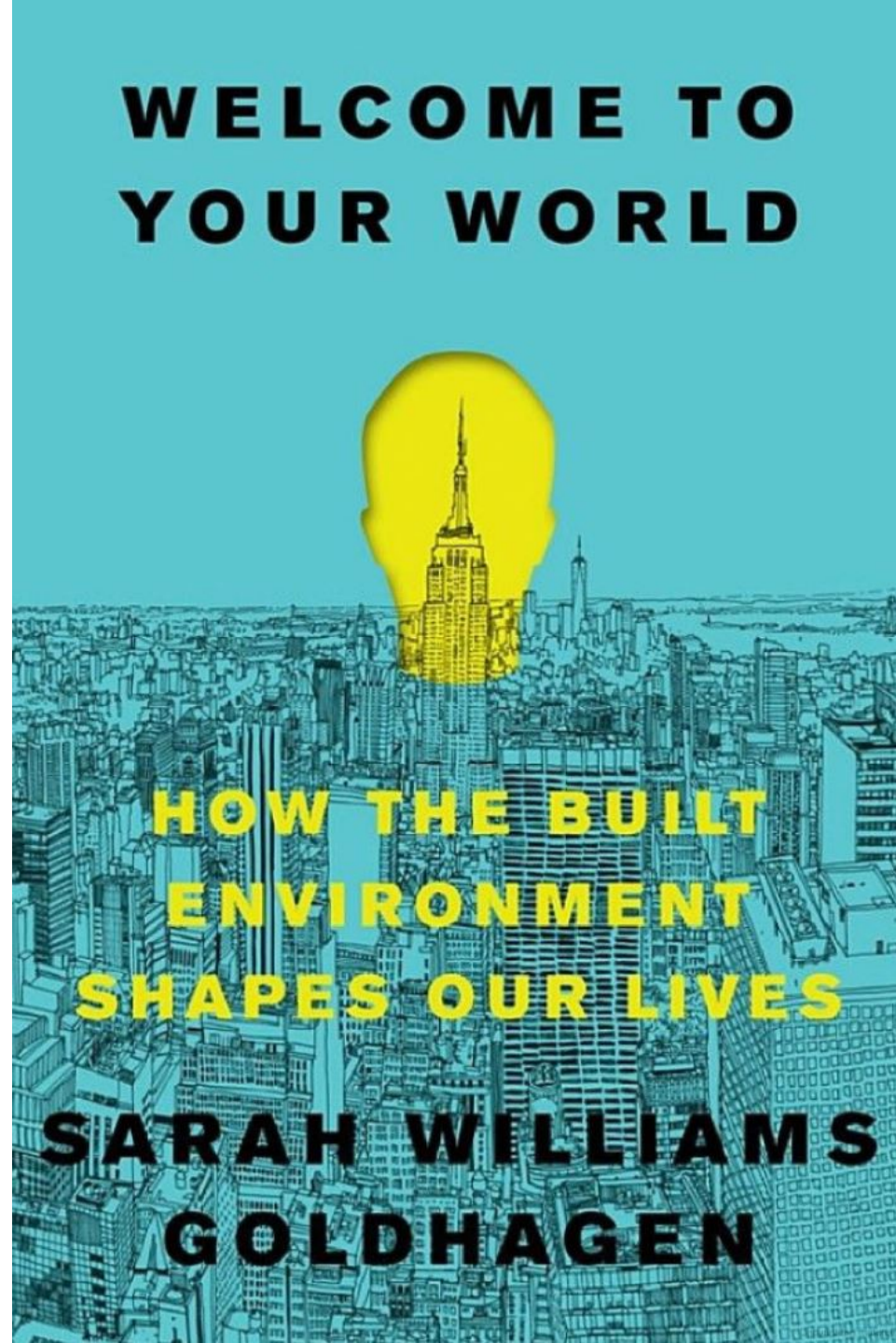
WELCOME TO YOUR SCHOOL

How Our Learning Environments Shape
Our Lives

A4LE PNW Conference 2018

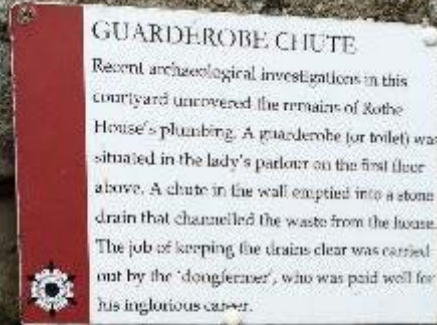
Using *Welcome to Your World*

- » Theme 1: Social, Emotional, Cognitive Consonance
- » Theme 2: Action Settings
- » Theme 3: Understanding a Vernacular through Shapes, Materials and Textures



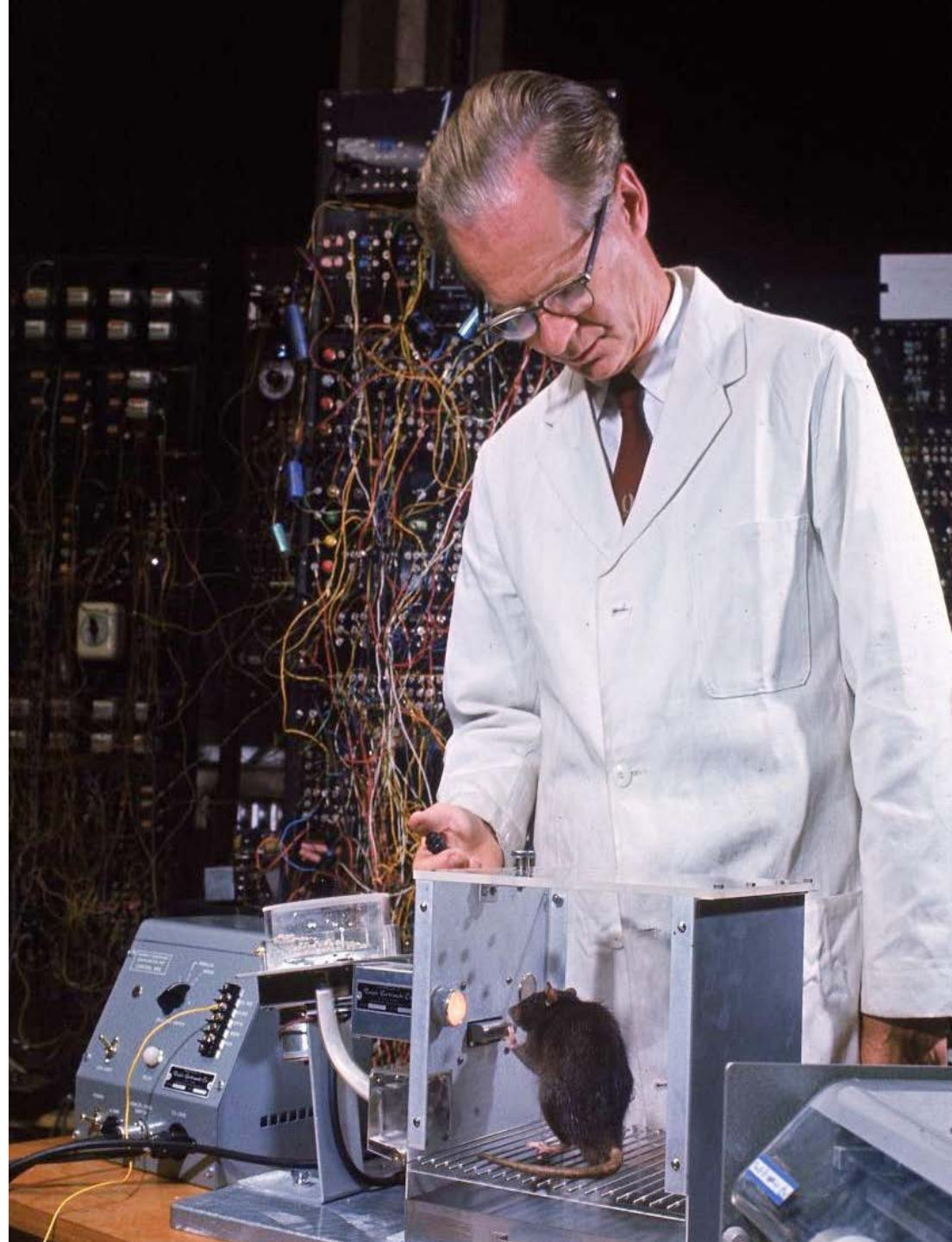
A Brief History

» The Psychology of the
Architecture of Learning



Behaviorism

- » Dominant paradigm of 20th Century Psychology
- » Research based on controlled lab experiments that minimized variables
- » “Stimulus/Response” & “Operant Conditioning”
- » “Consciousness does not exist”





Echoes of Behaviorism



Echoes of Behaviorism





Alternative to Behaviorism

» Environmental Psychology

» Roger Barker



Environmental Psychology

- » Interdisciplinary
- » Observation of people (and animals) in their natural settings
- » The body is the vehicle for thinking: “Embodied Cognition”
- » Problem oriented
- » Behavior settings



PHOTO 1-3 A scene from Oskaloosa, Kansas, site of the Midwest Psychological Field Station



Barker's Midwest Psychological Field Station

» Study of Action Spaces as
a predictor of children's
behavior





Exercise #1

- » Research a topic that applies to Environmental Psychology to Learning Environments
- » Topic must be both academically rigorous and relevant to K-12 Learning Environments
- » Be prepared to discuss by end of this seminar



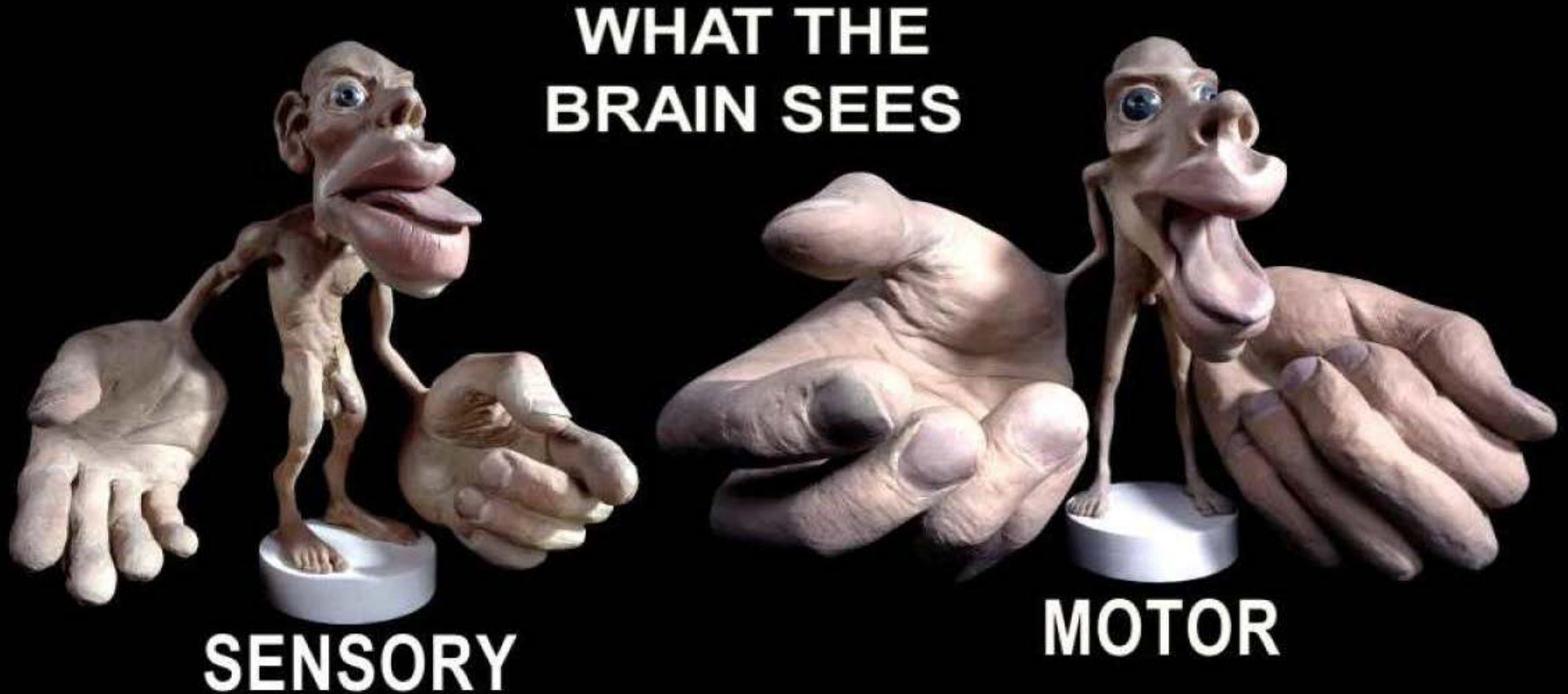
Theme 1: Social, Emotional, Cognitive Consonance

- » Cognition
- » Existence vs Experience
- » Egocentric vs Allocentric



Cognition

- » The mental action or process of acquiring knowledge through thought, experience and the senses



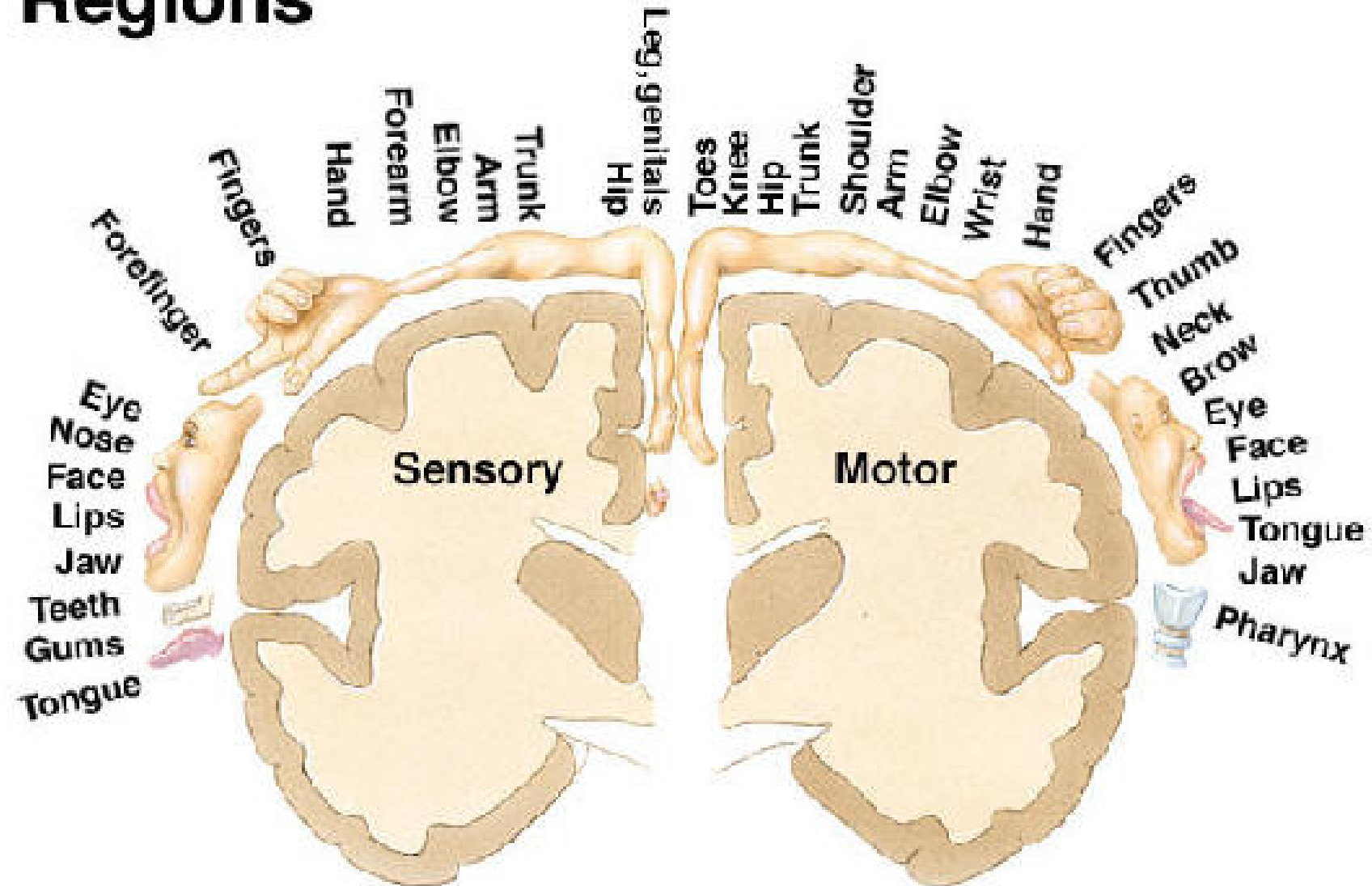


Cognition

- » The mental action or process of acquiring knowledge through thought, experience and the senses

Copyright © The McGraw-Hill Companies, Inc. Permission required for reproduction or display.

Cerebral Cortex and Associated Body Regions





Existence vs Experience





Existence vs Experience





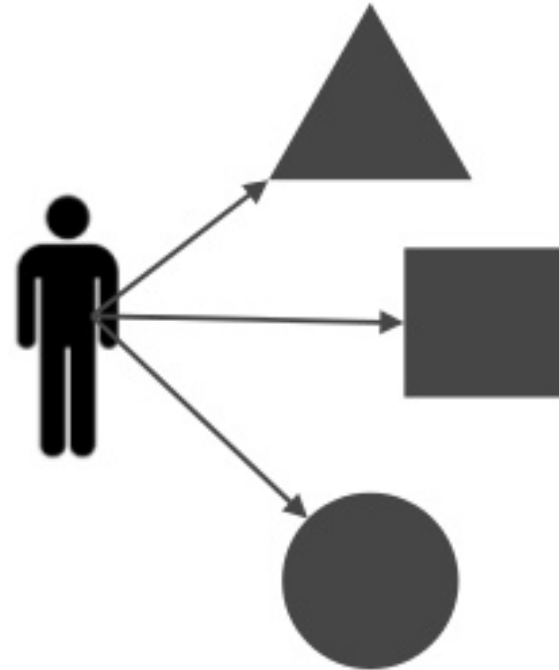
Existence vs Experience



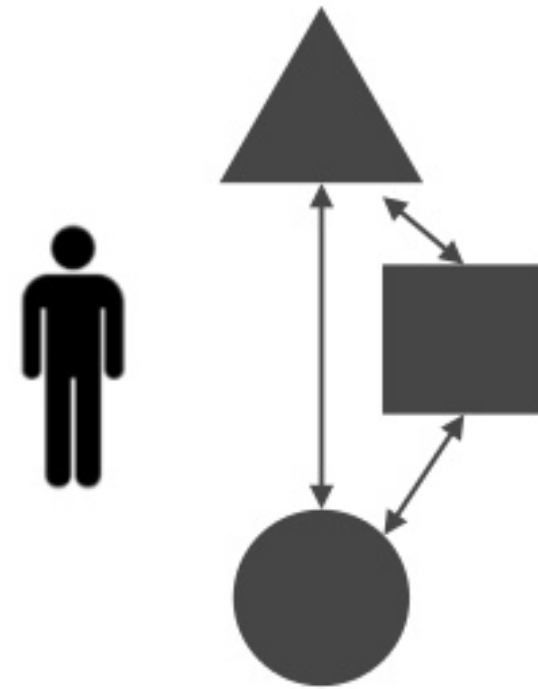
Egocentric vs Allocentric Thinking



Egocentric



Allocentric





Egocentric vs Allocentric Thinking





Exercise #2

- » Think of and share an example of an object or component of the built environment in which the architect/designer provided a solution that supports mind-body-environment cognition.
- » Now think of a good example in a school environment.



Theme 2: Action Spaces

- » Refer to Chapter 5, Welcome to Your World, “People Embedded in Social Worlds”
- » “Action (or Behavior) Settings”
- » Affordance – James J. Gibson
- » Case Studies: Outdoor Spaces, Flex Areas, Electives

Theme 2: Action Settings





Theme 2: Action Settings





Theme 2: Action Settings





Theme 2: Action Settings





Theme 2: Action Settings

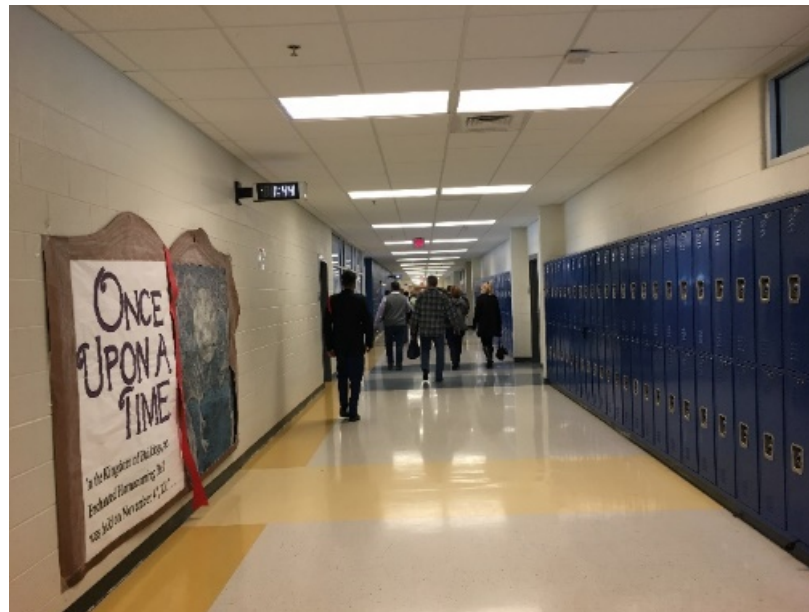




Theme 2: Action Settings



Theme 2: Action Settings





Theme 2: Action Settings



Theme 2: Action Settings



Theme 2: Action Settings



Theme 2: Action Settings





Theme 2: Action Spaces

- » “Any space in a school should suggest an activity.” — Brian Carter
- » “My most powerful lesson from planning schools is that Social Space is critically important and difficult to get right.” — Edward Peters
- » Improving our practice by using science to inform art, AND, to communicate with others, eg, Users, Community Members, the Legislature.





Theme 3: Understanding a Vernacular through Shapes, Materials, Textures

- » Critical regionalism
- » Form based cues
- » Memory resonant nature of materials



Form Based Cues





Form Based Cues





Form Based Cues





Memory Resonance





Memory Resonance



Next Steps

- » Review Psychology of Architecture
- » Review Participants Photos
- » Join the Conversation — recruit a psychologist





Reading and Resource List

- » Goldhagen, Sarah Williams. *Welcome to Your World: How the Built Environment Shapes Our Lives*. Harper Collins, 2017.
- » Walden, Rotraut. *Schools for the Future Design Proposals from Architectural Psychology*. Springer Fachmedien, 2009.
- » Tanner, Dr. C Kenneth. "Effects of School Architectural Designs on Students' Accomplishments: A Meta-Analysis" Education Facilities Clearinghouse. August 2015.
- » Sarah Williams Goldhagen: 'Welcome to Your World: How the Built Environment Shapes Our Lives.'" *YouTube*, Talks at Google, www.youtube.com/watch?v=Y-4Oenywkog.



WELCOME TO YOUR SCHOOL

How Our Learning Environments Shape
Our Lives

A4LE PNW Conference 2018