

# Rallying the Community

The Story of the Peerless Lake and Trout Lake First Nation Schools.

A4LE – 2017 Pacific Northwest Regional Conference





**Heather Bretz**  
Principal, Architect



**Zoë Rezac**  
Communications &  
Aboriginal Engagement  
Specialist

# Agenda

- 1 History of the Peerless Trout First Nation
- 2 First Visit for their New Schools
- 3 Community Engagement
- 4 Local Context Matters
- 5 Making a School that the Community has Pride In.





1

# History of the Peerless Trout First Nation

# Where in the World?

**Peerless Lake and Trout Lake is located in Northern Alberta.**

## Fun Facts

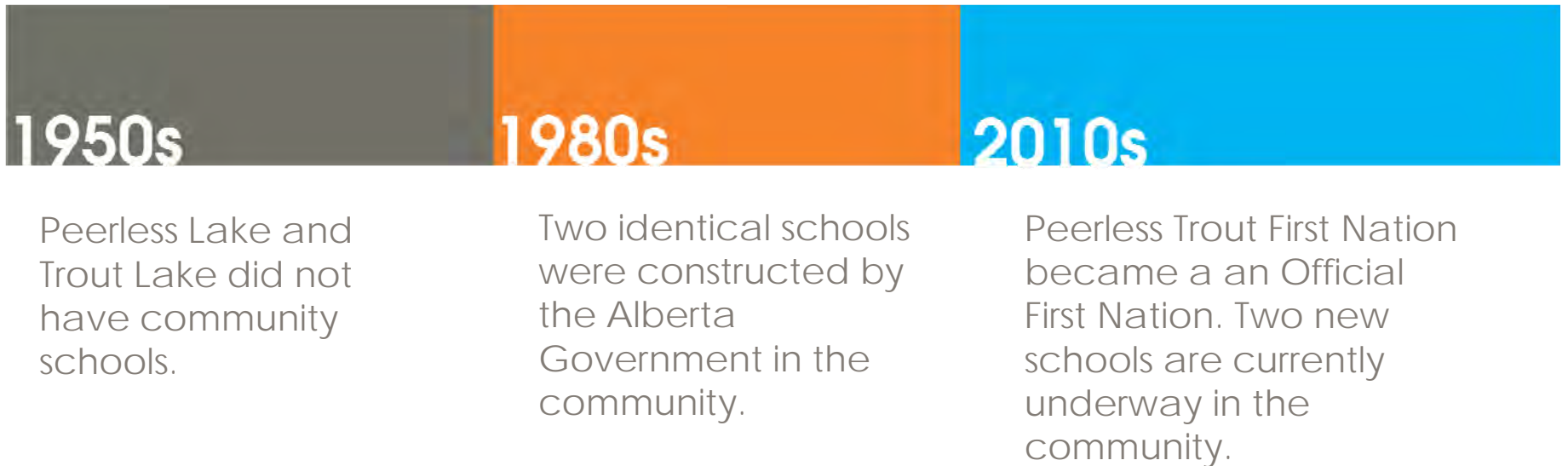
- Closest town is Red Earth Creek, one hour drive in good weather.
- Five hour drive north of Edmonton.







# History of a Nation







2

First Visit for their  
New Schools



# Understanding the Community

Through formal and informal conversations, we discovered the following key issues that surround the new schools.



# School Culture

## Current Situation

- Low attendance levels and graduation rates
- Recruitment of teachers in remote areas has challenges
- All kids are provided breakfast and lunch at school





A photograph of a group of people, mostly seen from the back, with their arms raised in the air. The background is a plain, light-colored wall. The image has a slightly grainy texture.

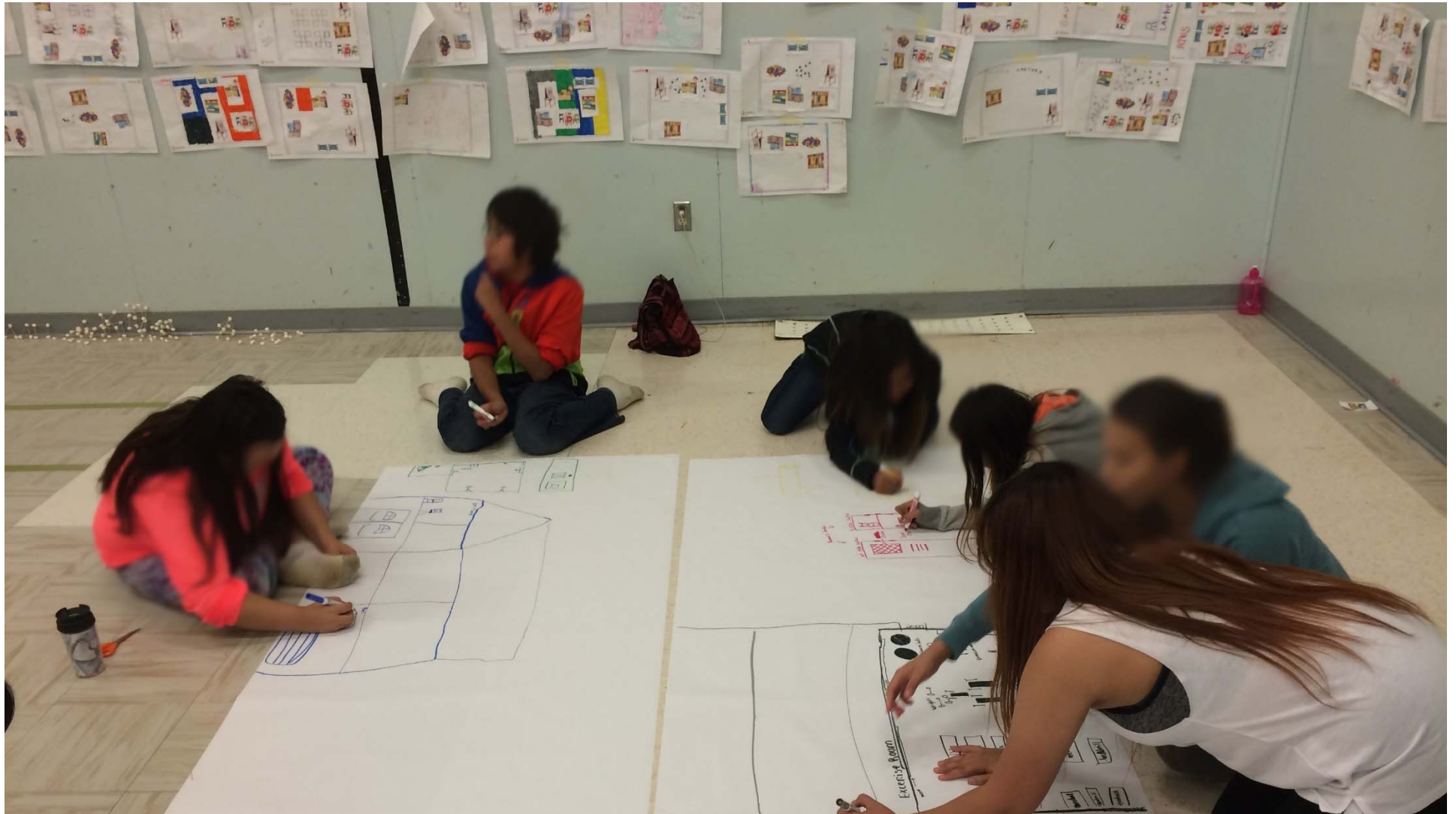
3

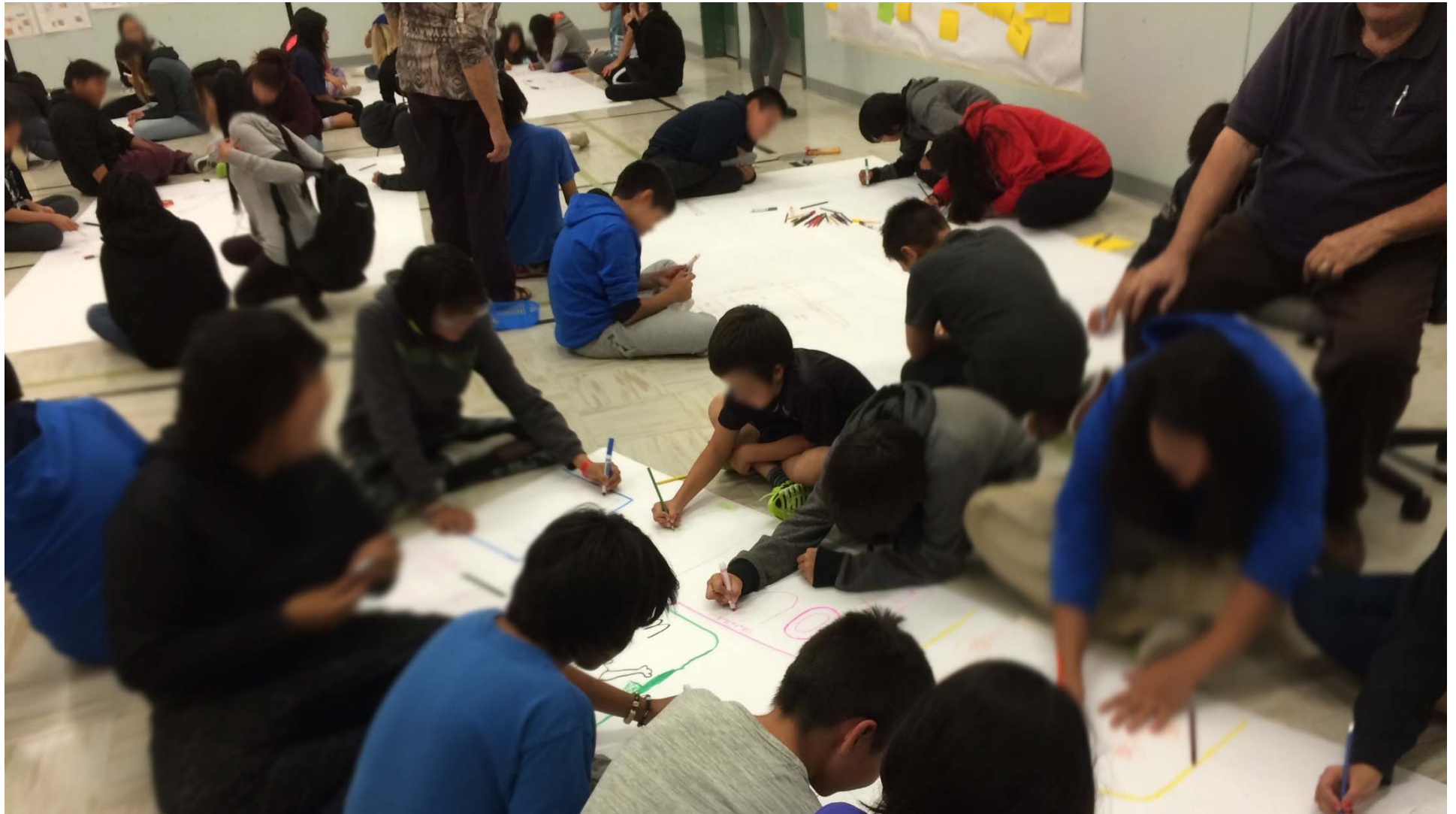
# Community Engagement















# Wish Wall

See back of cafeteria

playground  
 1. Basketball court  
 2. Soccer field  
 3. Volleyball court  
 4. Tennis court  
 5. Badminton court  
 6. Table tennis  
 7. Chess  
 8. Ping Pong  
 9. Archery  
 10. Fencing  
 11. Judo  
 12. Karate  
 13. Taekwondo  
 14. Wrestling  
 15. Gymnastics  
 16. Climbing  
 17. Rock wall  
 18. Water park  
 19. Ice skating  
 20. Skiing

playground  
 1. Basketball court  
 2. Soccer field  
 3. Volleyball court  
 4. Tennis court  
 5. Badminton court  
 6. Table tennis  
 7. Chess  
 8. Ping Pong  
 9. Archery  
 10. Fencing  
 11. Judo  
 12. Karate  
 13. Taekwondo  
 14. Wrestling  
 15. Gymnastics  
 16. Climbing  
 17. Rock wall  
 18. Water park  
 19. Ice skating  
 20. Skiing

playground  
 1. Basketball court  
 2. Soccer field  
 3. Volleyball court  
 4. Tennis court  
 5. Badminton court  
 6. Table tennis  
 7. Chess  
 8. Ping Pong  
 9. Archery  
 10. Fencing  
 11. Judo  
 12. Karate  
 13. Taekwondo  
 14. Wrestling  
 15. Gymnastics  
 16. Climbing  
 17. Rock wall  
 18. Water park  
 19. Ice skating  
 20. Skiing

New Playground

Trampoline Park

Water Park

1. Basketball court  
 2. Soccer field  
 3. Volleyball court  
 4. Tennis court  
 5. Badminton court  
 6. Table tennis  
 7. Chess  
 8. Ping Pong  
 9. Archery  
 10. Fencing  
 11. Judo  
 12. Karate  
 13. Taekwondo  
 14. Wrestling  
 15. Gymnastics  
 16. Climbing  
 17. Rock wall  
 18. Water park  
 19. Ice skating  
 20. Skiing

1. Basketball court  
 2. Soccer field  
 3. Volleyball court  
 4. Tennis court  
 5. Badminton court  
 6. Table tennis  
 7. Chess  
 8. Ping Pong  
 9. Archery  
 10. Fencing  
 11. Judo  
 12. Karate  
 13. Taekwondo  
 14. Wrestling  
 15. Gymnastics  
 16. Climbing  
 17. Rock wall  
 18. Water park  
 19. Ice skating  
 20. Skiing

1. Basketball court  
 2. Soccer field  
 3. Volleyball court  
 4. Tennis court  
 5. Badminton court  
 6. Table tennis  
 7. Chess  
 8. Ping Pong  
 9. Archery  
 10. Fencing  
 11. Judo  
 12. Karate  
 13. Taekwondo  
 14. Wrestling  
 15. Gymnastics  
 16. Climbing  
 17. Rock wall  
 18. Water park  
 19. Ice skating  
 20. Skiing

1. Basketball court  
 2. Soccer field  
 3. Volleyball court  
 4. Tennis court  
 5. Badminton court  
 6. Table tennis  
 7. Chess  
 8. Ping Pong  
 9. Archery  
 10. Fencing  
 11. Judo  
 12. Karate  
 13. Taekwondo  
 14. Wrestling  
 15. Gymnastics  
 16. Climbing  
 17. Rock wall  
 18. Water park  
 19. Ice skating  
 20. Skiing

1. Basketball court  
 2. Soccer field  
 3. Volleyball court  
 4. Tennis court  
 5. Badminton court  
 6. Table tennis  
 7. Chess  
 8. Ping Pong  
 9. Archery  
 10. Fencing  
 11. Judo  
 12. Karate  
 13. Taekwondo  
 14. Wrestling  
 15. Gymnastics  
 16. Climbing  
 17. Rock wall  
 18. Water park  
 19. Ice skating  
 20. Skiing

Computer Lab

New Lockers

1. Basketball court  
 2. Soccer field  
 3. Volleyball court  
 4. Tennis court  
 5. Badminton court  
 6. Table tennis  
 7. Chess  
 8. Ping Pong  
 9. Archery  
 10. Fencing  
 11. Judo  
 12. Karate  
 13. Taekwondo  
 14. Wrestling  
 15. Gymnastics  
 16. Climbing  
 17. Rock wall  
 18. Water park  
 19. Ice skating  
 20. Skiing

1. Basketball court  
 2. Soccer field  
 3. Volleyball court  
 4. Tennis court  
 5. Badminton court  
 6. Table tennis  
 7. Chess  
 8. Ping Pong  
 9. Archery  
 10. Fencing  
 11. Judo  
 12. Karate  
 13. Taekwondo  
 14. Wrestling  
 15. Gymnastics  
 16. Climbing  
 17. Rock wall  
 18. Water park  
 19. Ice skating  
 20. Skiing

Staff room  
 ↳ lockers for coats, etc  
 ↳ more than 11  
 ↳ microwave & fridge

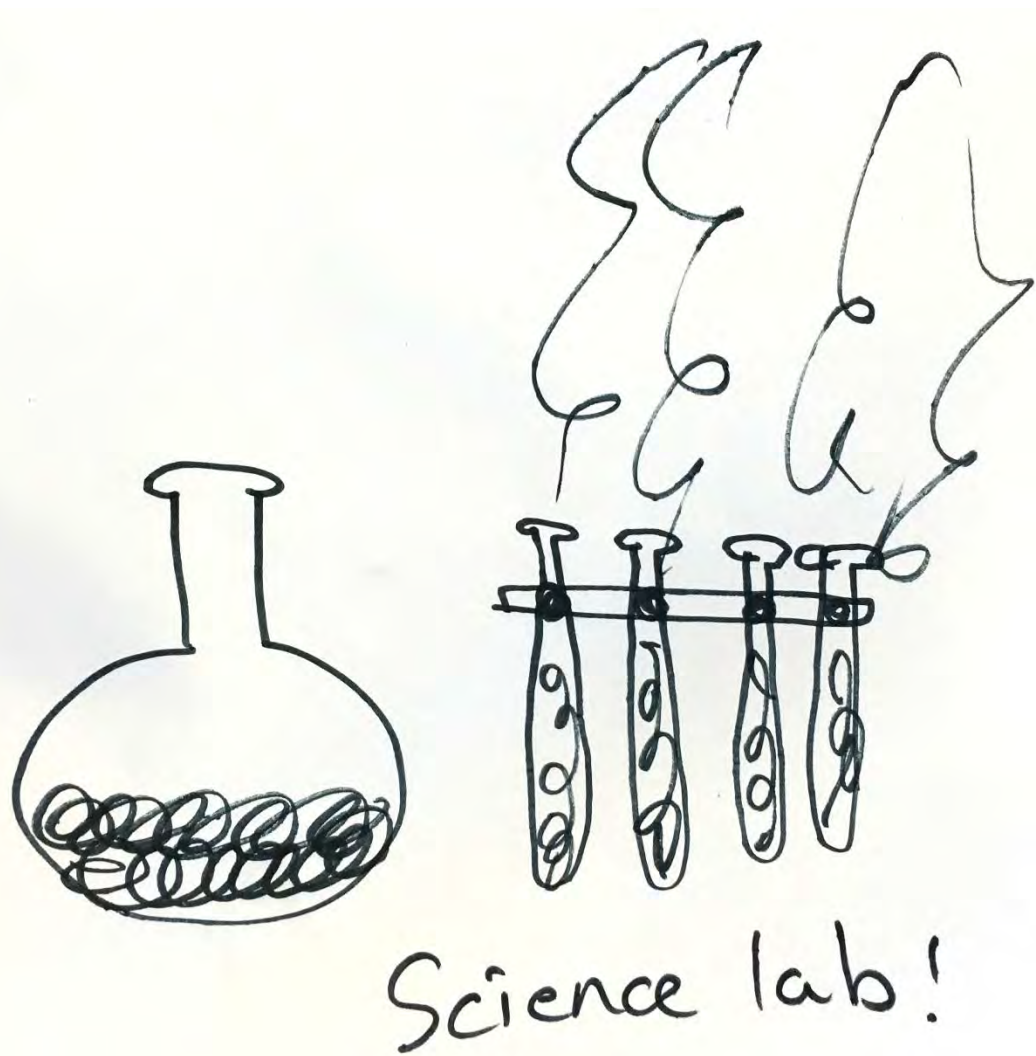
"concept" auditorium  
 ↳ shell-shaped with raised seating acoustically designed  
 (Not shared with gym)

1. Basketball court  
 2. Soccer field  
 3. Volleyball court  
 4. Tennis court  
 5. Badminton court  
 6. Table tennis  
 7. Chess  
 8. Ping Pong  
 9. Archery  
 10. Fencing  
 11. Judo  
 12. Karate  
 13. Taekwondo  
 14. Wrestling  
 15. Gymnastics  
 16. Climbing  
 17. Rock wall  
 18. Water park  
 19. Ice skating  
 20. Skiing

1. Basketball court  
 2. Soccer field  
 3. Volleyball court  
 4. Tennis court  
 5. Badminton court  
 6. Table tennis  
 7. Chess  
 8. Ping Pong  
 9. Archery  
 10. Fencing  
 11. Judo  
 12. Karate  
 13. Taekwondo  
 14. Wrestling  
 15. Gymnastics  
 16. Climbing  
 17. Rock wall  
 18. Water park  
 19. Ice skating  
 20. Skiing

Several reading/work locations in hallways (corves) → to work in small groups/meet parents/run private conversations





With  
Chief  
and  
Council





# With the Community



Welcoming Entrance  
Open Space at Entry  
Big Windows  
Clerestory Windows  
Natural light  
Warm Colours  
Community Hub  
Multi Purpose Space  
Kitchen

PY

Land Base Learning  
Music  
Art  
Drama / Stage \*Two Sided  
Bring Nature Inside  
Living Wall?  
Display Cultural Background  
Welcoming Sign

PY

Tell a story  
Exterior Gathering Space

Art room  
Culinary Arts  
Library (large) with big windows for natural lighting  
Classrooms with a variety of desks - teachers  
Small area with





At least one plant.  
Lots of windows  
Freezer like

Just a really

nice, big library  
with older books

+ bear  
everywhere.

and Vincent van  
Gogh

printings everywhere.  
big windows  
light inside.

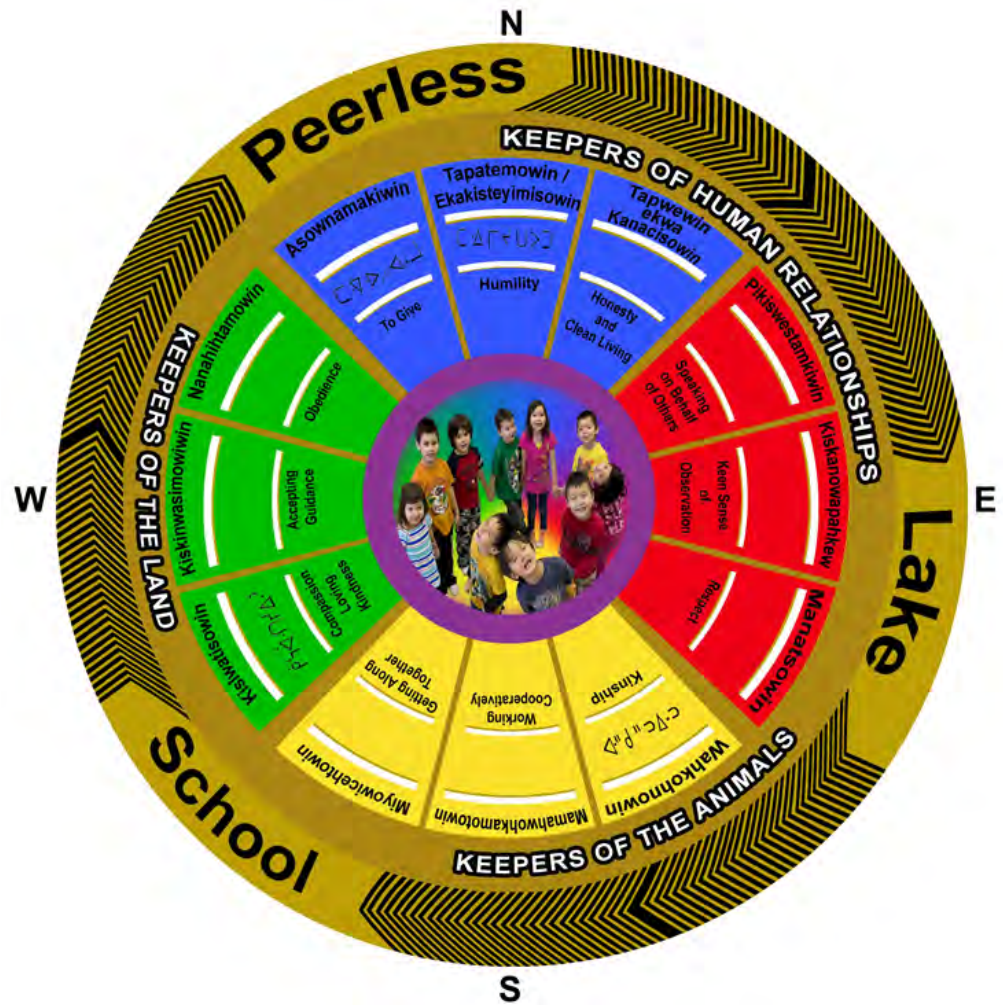
plants + couches  
everywhere

gogh (other painters too)

~~lots of~~  
natural



# The Cree Curriculum







4

# Local Context Matters



# Unique Culture

## You know what they say about assuming...

- We didn't do it in one meeting, the engagement is ongoing. Series of meetings, community reports, phone calls to the new school committee, additional meetings.

# Unconscious Ignorance

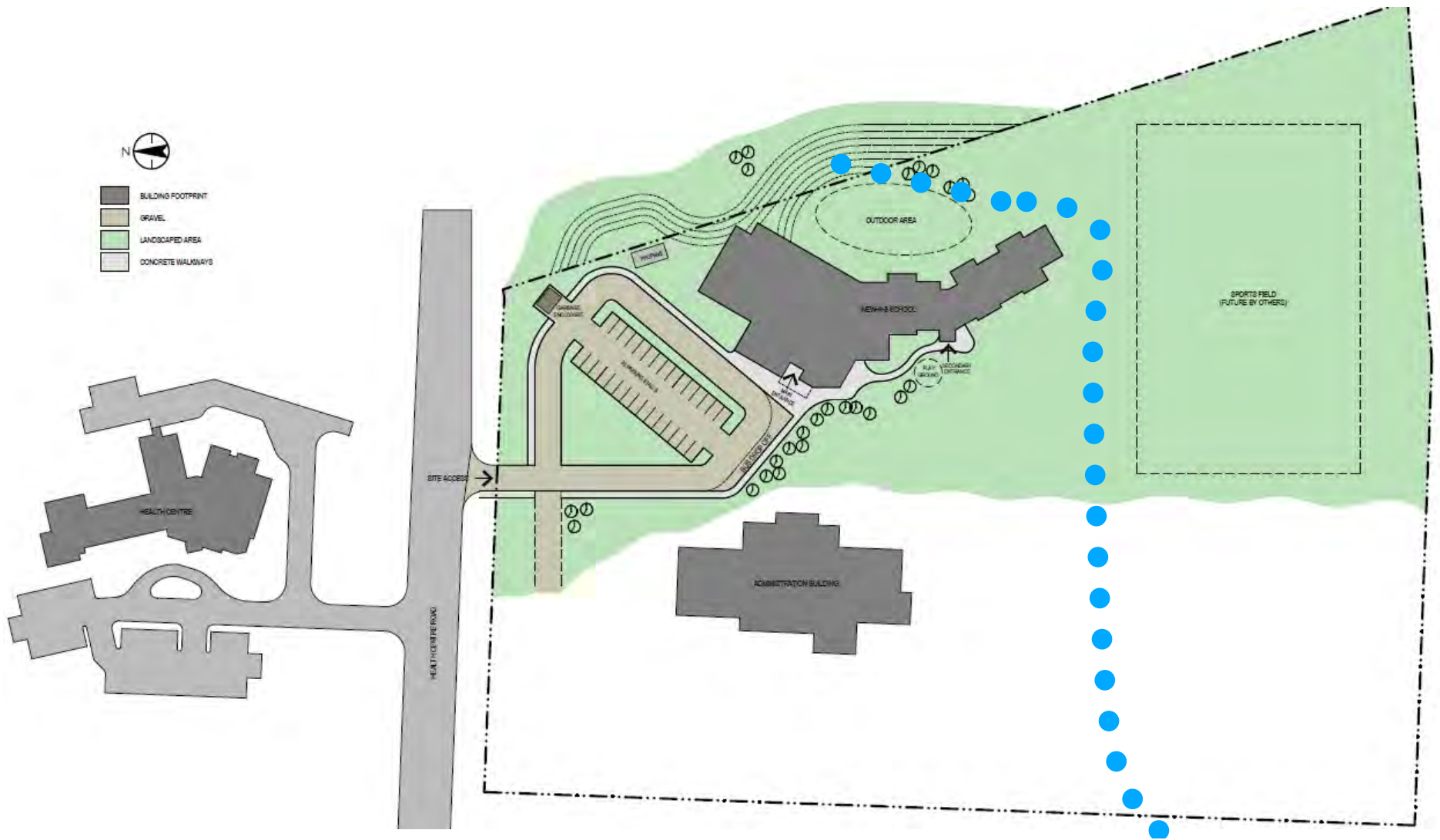
## Hit the ground running

- With the Stakeholder Engagement complete we went back to the drawing board and prepared a concept for the band.

## Sustainable design features

- School was positioned close to the trees and next to a beautiful river
- Emphasis was on close proximity to nature
- Natural beauty was put at the forefront of the design





# Conscious Ignorance

What we thought they wanted



School located  
close to the trees  
and nature!

What they actually wanted

We already live  
in the trees,  
don't put us in  
the trees again!





# Conscious Ignorance

What we thought they wanted



School  
nestled next to  
the spring/  
stormwater  
runoff.

What they actually wanted

We're not  
interested in a  
creek, most of us  
have one in our  
backyards!



# Conscious Ignorance

What we thought they wanted



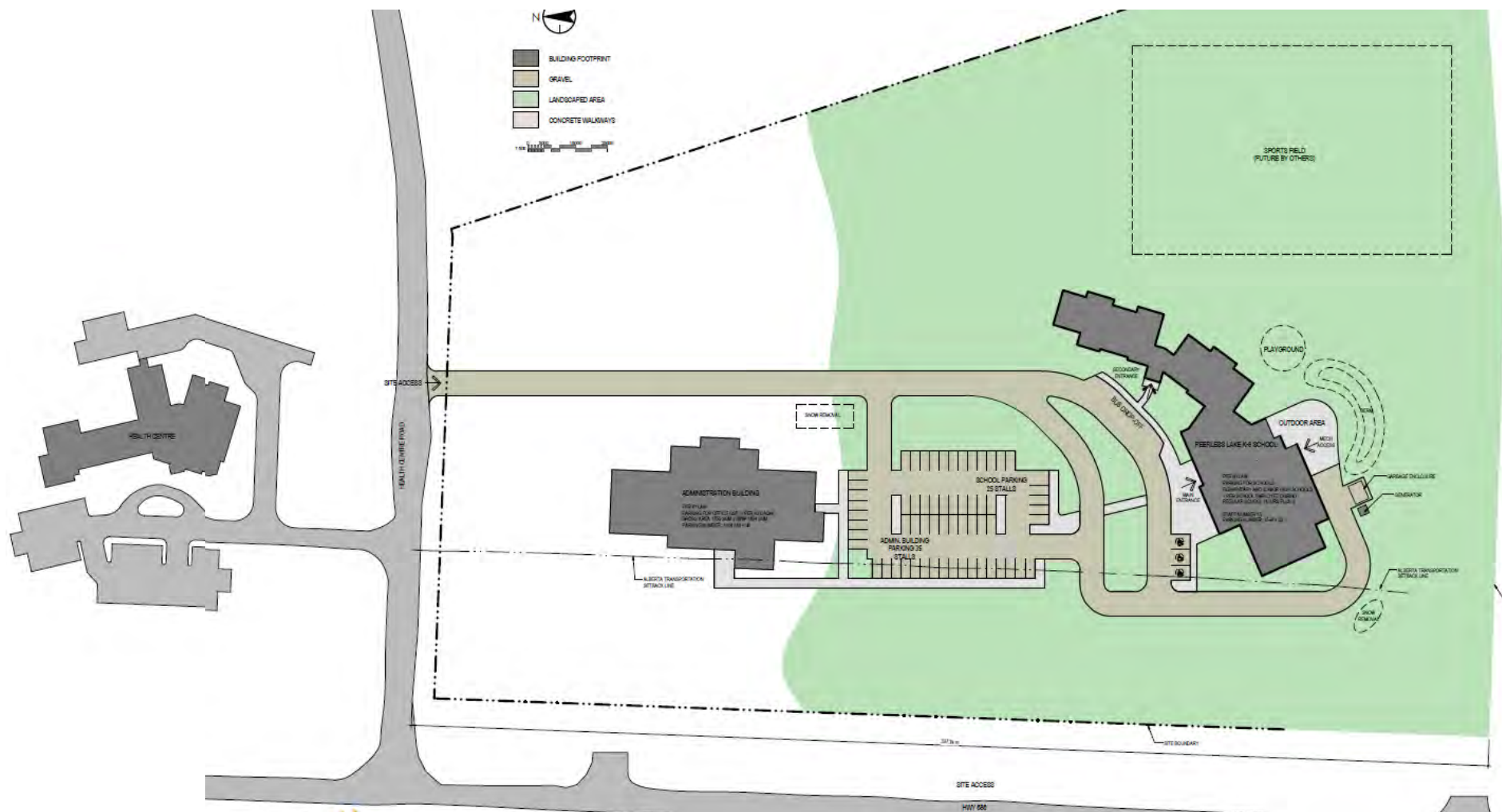
Emphasis on  
natural beauty.

What they actually wanted

We want the  
school to be  
a part of our  
main street!







A man with dark hair and a mustache is wearing a dark blue hockey jersey with "RAIDERS HOCKEY CLUB" and "Reebok HOCKEY" logos. He is holding an orange VR viewer with the Stantec logo in front of his eyes. The background is a blurred indoor setting.

5

Creating a School that the  
Community has Pride In.





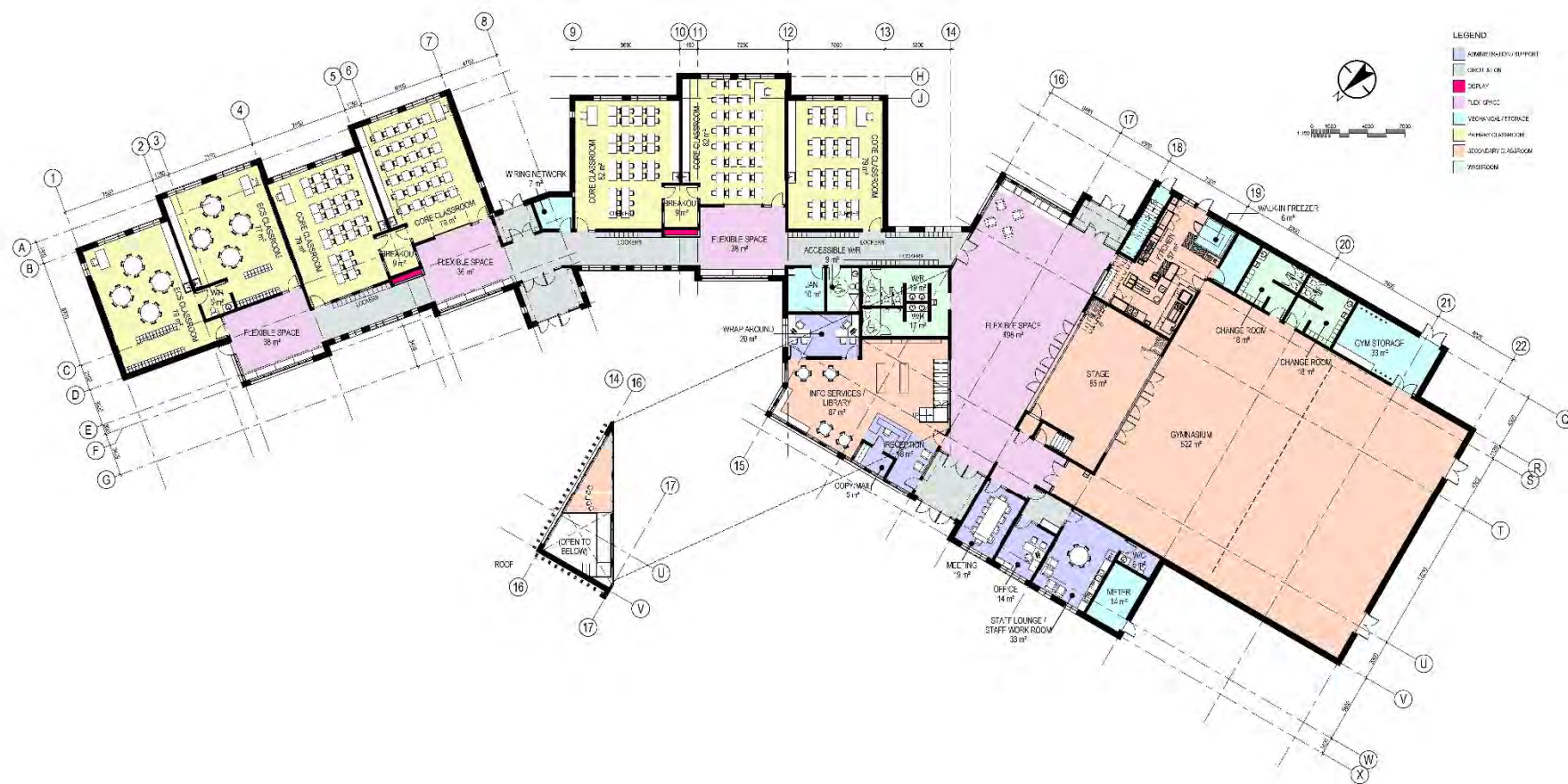
# Peerless Lake School





















# Solution?

Create a virtual reality experience that allows the users to stand in their new school, before it is even built.



# Virtual Reality Break





**Thank You!**

