

Post-occupancy Results from Students and Teachers on the Saskatchewan Joint-use School Bundles

The Sky Is the Limit: Growing Healthy Learning Environments
A4LE Pacific Northwest Regional Conference

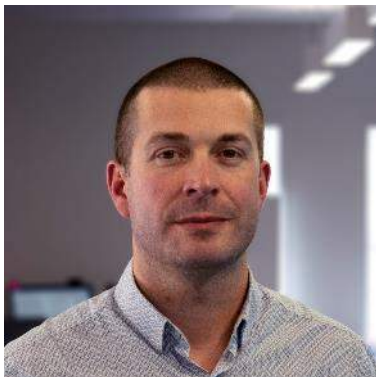




Laura Plosz, SAA, AAA, MAA, OAA, MRAIC, LEED AP
Principal, Architect



Dan Van Buekenhout, ALEP, Dip Civil Eng.
Manager of Capital Planning

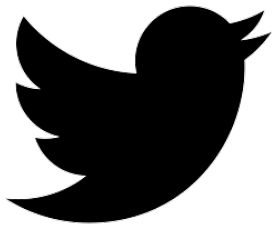


Ryan Martin
Manager of Facilities and Capital Projects



Get the conversation started with us

#A4LESK



@group2arch

@GSCSnews

@RegPublicSchools



@group2arch

01 02 03 04 05 06

Background

By the Numbers

18

9

5

4

3

2

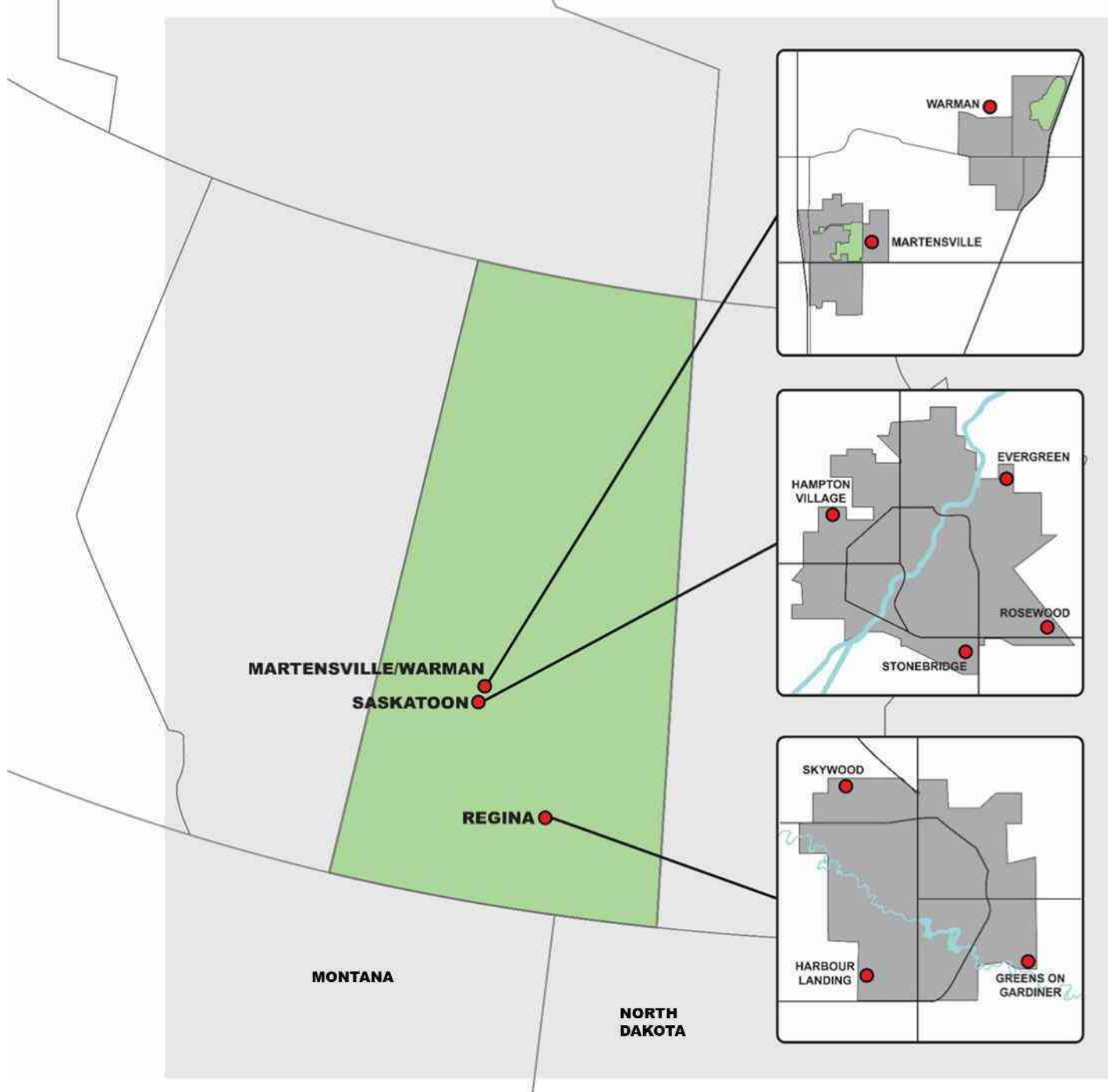
> 10,000



Twins

Quadruplets

Triplets



PSSD / GSCS

GSCS / SPSP

RPS / RCS

01 **02** 03 04 05 06

Background

Process

39 | P3



Lean 3P

- Production Preparation Process
- ***Describes*** facility characteristics required for success

P3 Procurement Model

- Public Private Partnership
- **Prescribes** characteristics required for success
- Encourages **innovation** by the Proponents

Schedule

- Aggressive timeline to open Sept 2017
- Required stakeholder commitment and buy-in
- 24 month build
- 2 month move-in

Stakeholder Participation

- Throughout document development
- Opportunities to enhance
- Educator and student participation

Student Engagement

- Focus on student as the customer
- Must be appropriately engaging

01 02 **03** 04 05 06

3 Models



MUNICIPAL RESERVE WITH PLAY FIELDS



MUNICIPAL RESERVE WITH PLAY FIELDS

STONEBRIDGE COMMON

STONEBRIDGE COMMON



GORDON ROAD

Why 3?

Regina Public Schools Pedagogy

1. Flexible Teaching Arrangements and Instructional Groupings
2. Teacher Collaboration & Co-Teaching
3. Interdisciplinary and Inquiry-Based Teaching and Learning
4. Inclusive Practices

Greater Saskatoon Catholic Schools

1. Each project is a unique experiment.
2. How do we improve on past designs?
3. How do we ensure we get it right?
4. Post Occupancy Assessment



01 02 03 **04** 05 06

Post-occupancy

Review Process

Who?

Greater Saskatoon Catholic Schools

Initiated in April 2018

Regina Public Schools

Initiated in June 2018

What?

What We Did

- Questions sent in advance and distributed to teachers
- Session held within each participating classroom
 - Set questions
 - Open dialogue/input from students
- 45 min with each class
- 2 sites for each division

Elementary School

Review of Facility Design and Functionality

Part I: Facility Design and Functionality

When considering the design of the school, think about the following aspects:

- Architectural features
- Adjacencies of spaces
- Electrical
- Mechanical
- Functionality
- Joint School partnership

Wonderful to have – works well	Works but would tweak in a repeat design	Would design space differently
<ul style="list-style-type: none">• Item 1•	<ul style="list-style-type: none">• Item 1•	<ul style="list-style-type: none">• Item 1•

Part II: Other Comments

- Item 1
-

When?

9 months after occupancy

Where?

GSCS

Martensville, SK

- École Holy Mary School

Saskatoon, SK

- St. Lorenzo School

RPS

Regina, SK

- Plainsview School
- Harbour Landing School

Why?

To improve school
environments from student
and educator perspectives

01 02 03 04 **05** 06

Post-occupancy Reviews

What We Heard

#1

Full range of learning environments



Classrooms

Classrooms



Classrooms



Classrooms



Learning Commons



Learning Commons



Learning Commons



Learning Commons



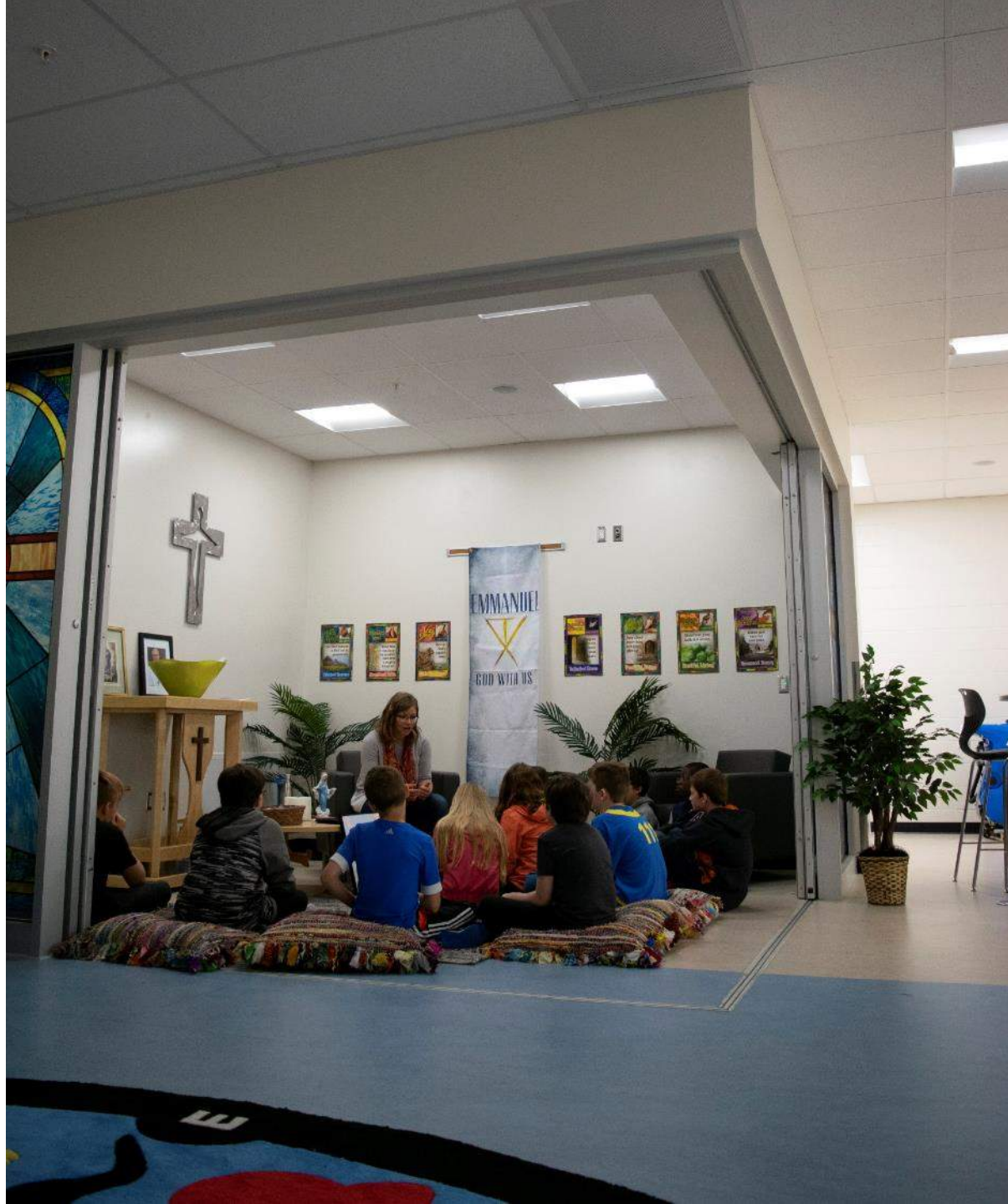
Learning Commons



Learning Commons



Sacred Spaces



Sacred Spaces



Studios



Studio 1



Break out rooms



Break out rooms



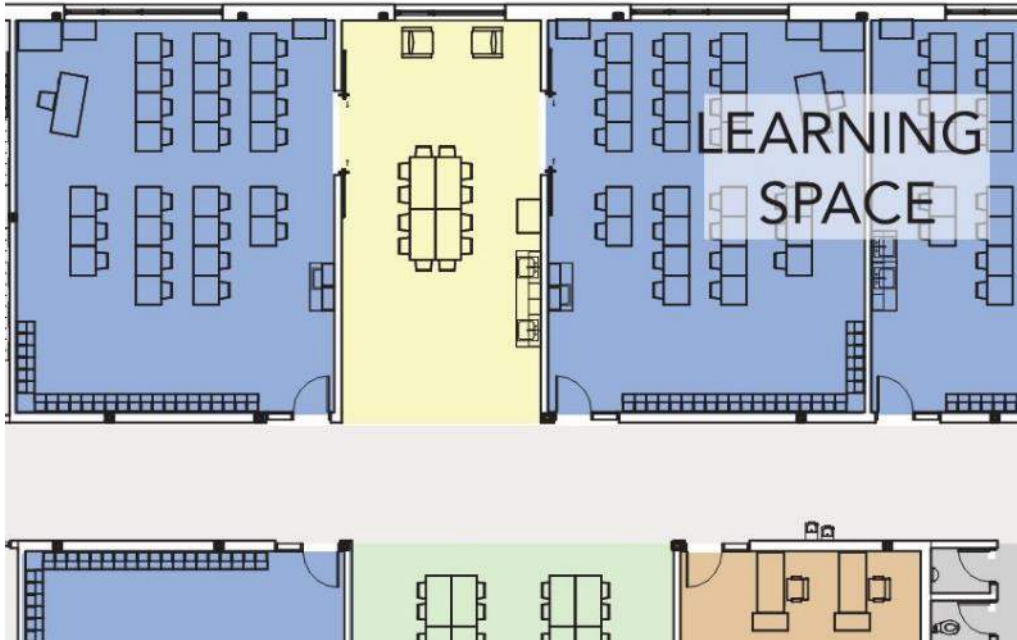
#2

**Directly adjacent &
visible break out
spaces**

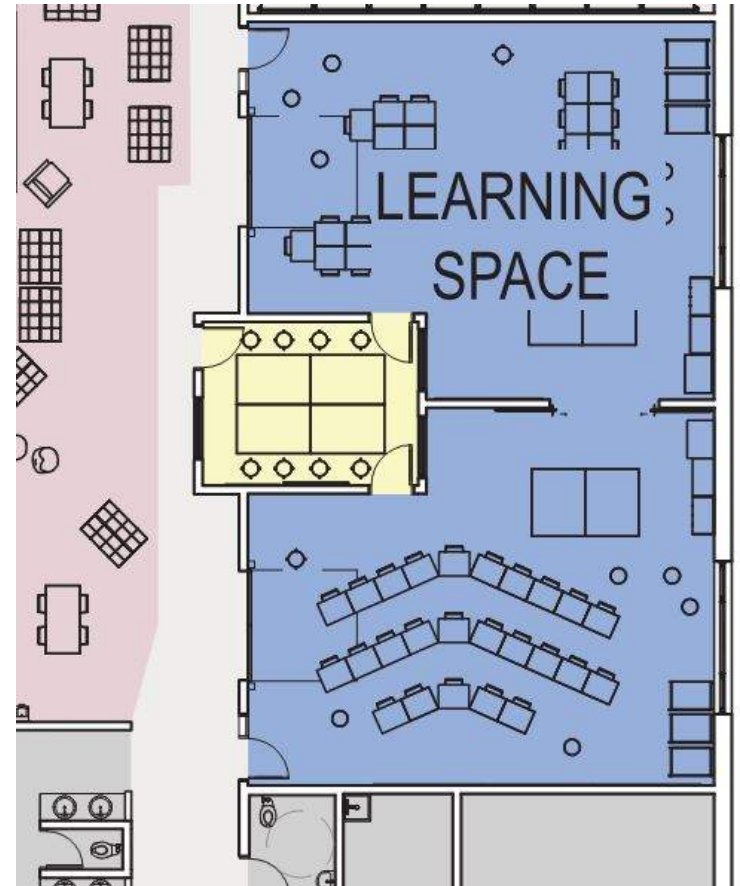


Break out rooms

GSCS



RPS

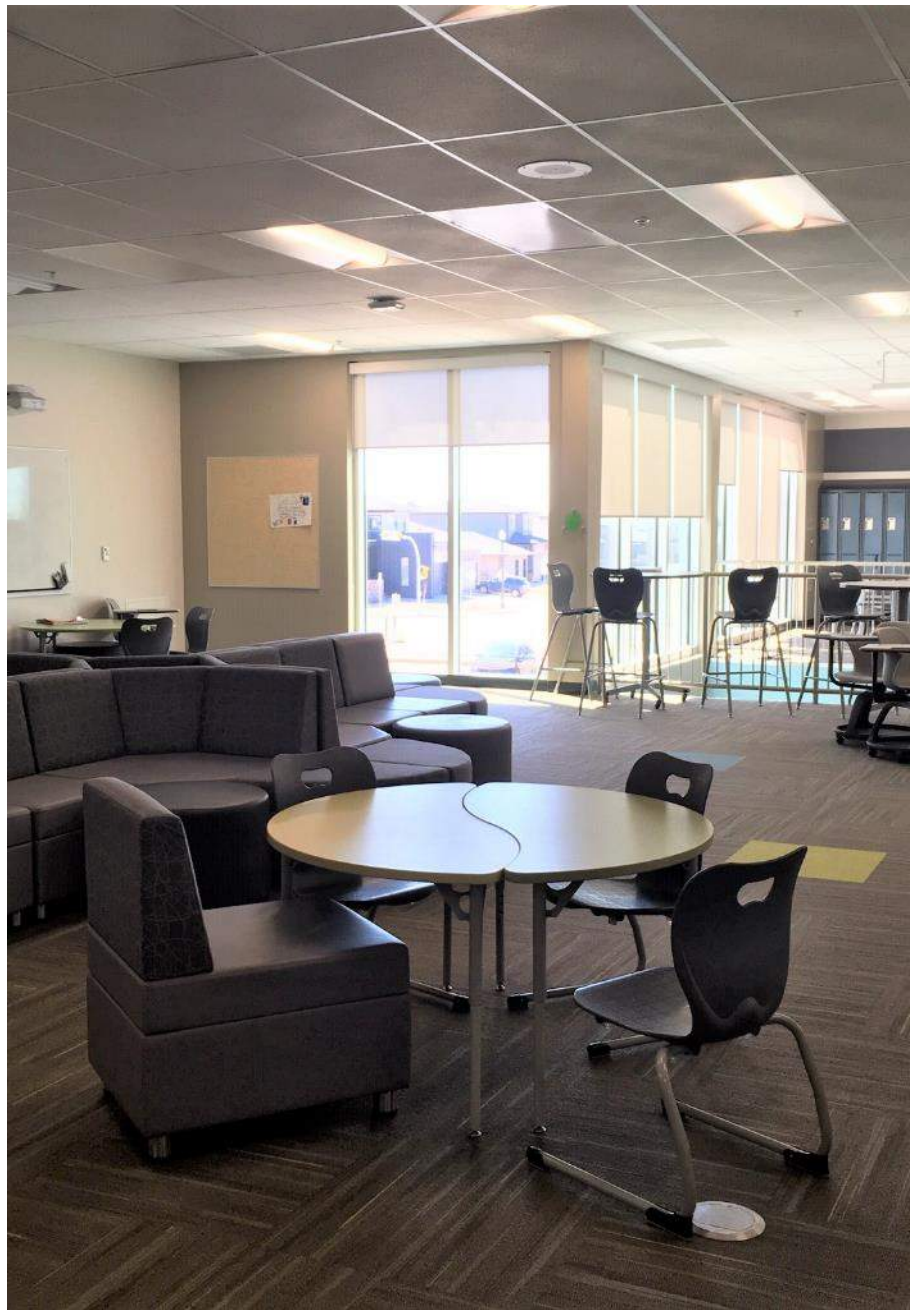


Break out rooms



#3

**Variety of
student seating,
desks & tables**





#4

Mobile millwork & furniture





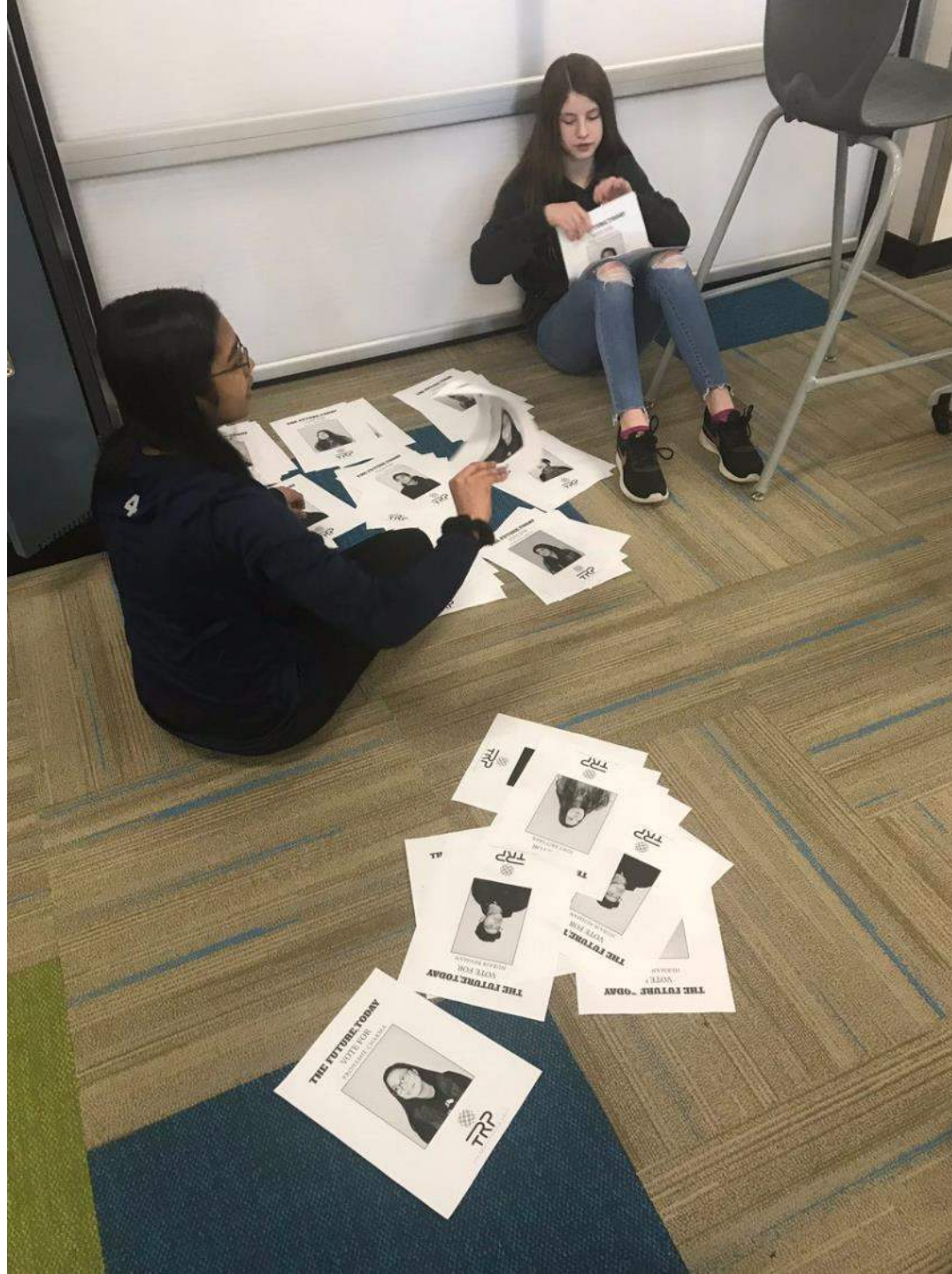






#5

**Thermal comfort,
acoustics &
daylighting matter**











#6

**Outdoor learning
environments**





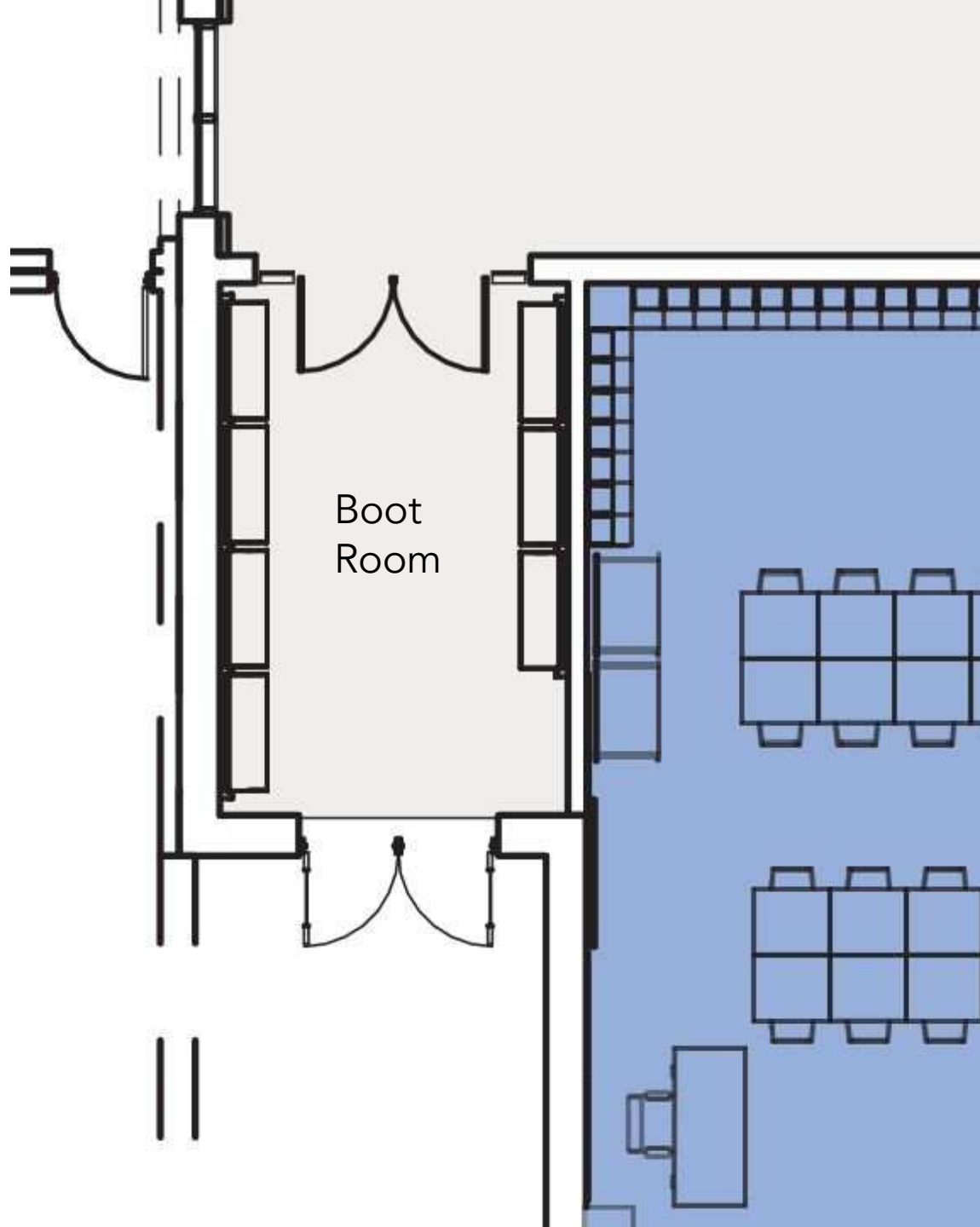
#7

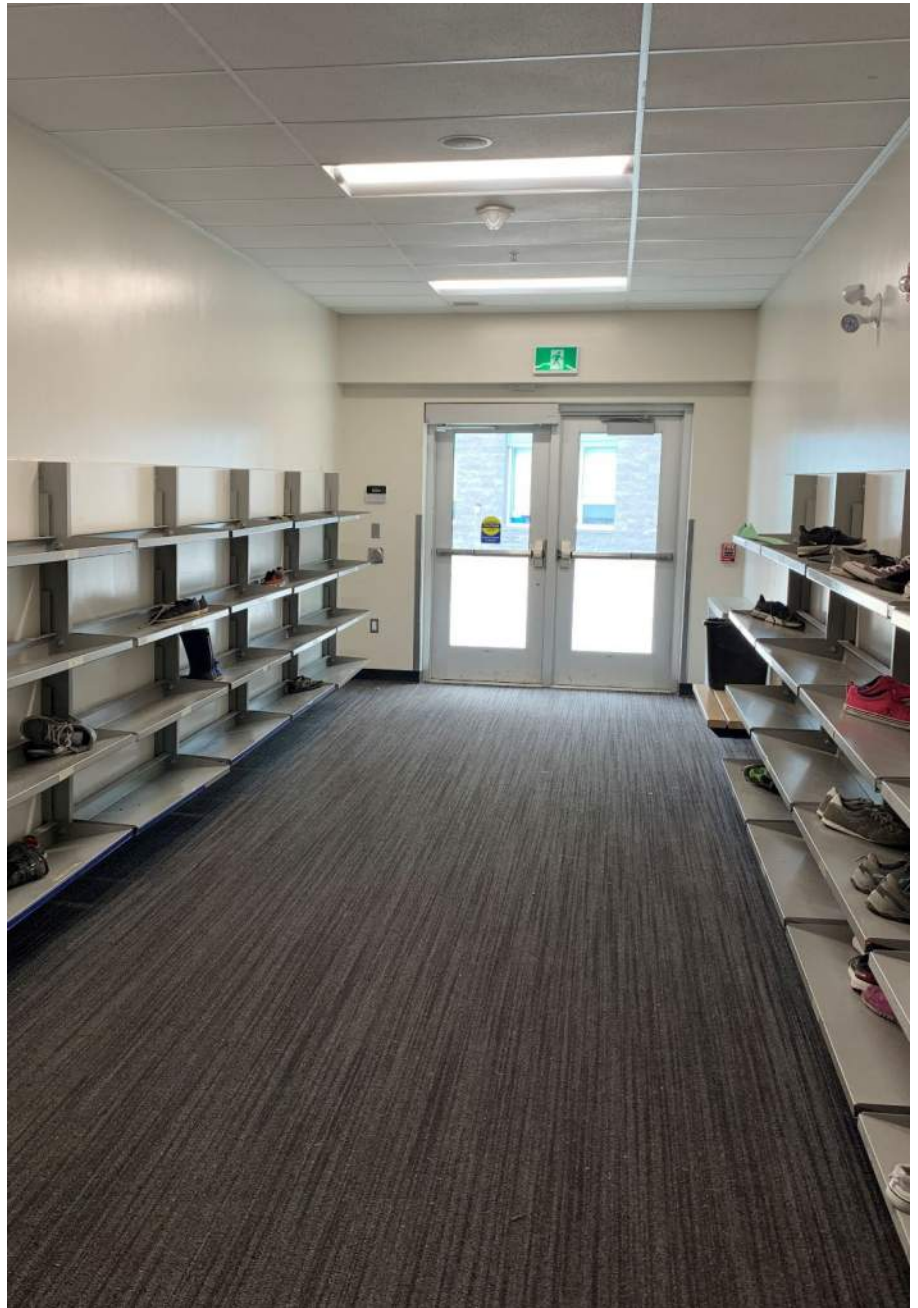
Recess counts!

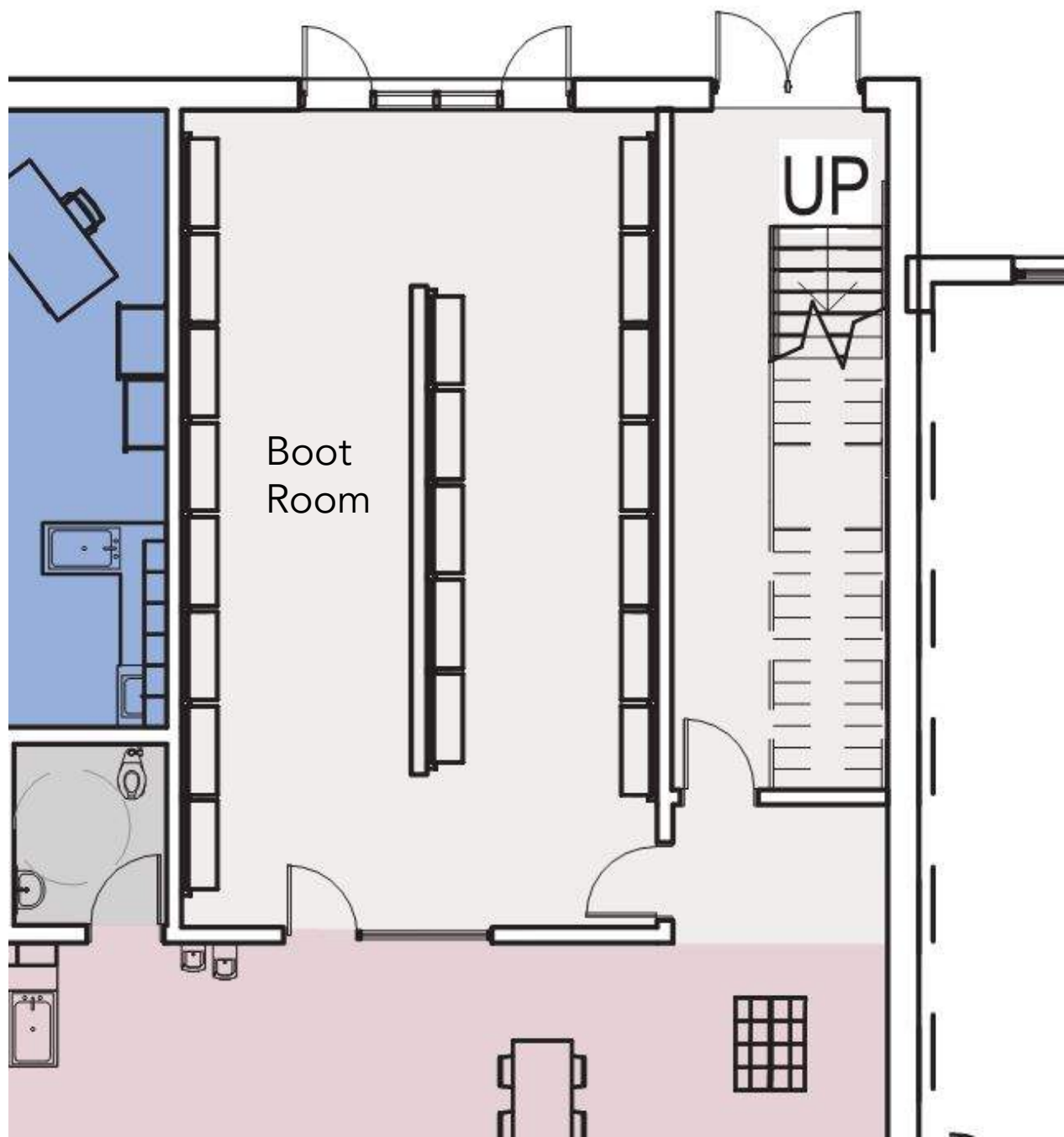
St. Thérèse of Lisieux Catholic School

123

















2

Commons

Make today
as awesome
as yesterday
by getting jealous

If you're not happy,

make today

as awesome

as yesterday

by getting jealous

 **EXTREME COLD WARNING** 

▼ **Current Conditions**



Fog Patches

-40°C

°C | °F

Wind:
WNW 9 km/h

Wind Chill:
-51

▼ More details


Temperature:
-40.4°C

Pressure:
103.8 kPa ↑

Dew point:
-44.3°C

Visibility:
24 km



 Liked by **andydyl** and **lilyh_16**



 **EXTREME COLD WARNING** 

▼ **Current Conditions**



Mist

-43°C

°C | °F

Wind:
WNW 7 km/h

Wind Chill:
-52

▼ More details

Temperature:
-42.6°C

Pressure:
103.8 kPa ↑

Dew point:
-46.5°C

Visibility:
3 km



 Liked by **kmart7979** and **others**

kmart79 #titatchatter



#8

Orientation & PD





Accepting. Reading. Collaborating.

Free to create. Free to be brilliant.

Focused. Small Groups.

This is a Cultural Diversity learning area

Self-Regulation is a must!

Choose a good action for the situation!

Silent Time. No Voices.

Concentrating & Focused

Classroom, Da Vinci, Breakout, Commons, End room.

Return when time is up. Bring Materials.

Individual. On Task. Solo.

Short times 15-30 min

Inner Thoughts.

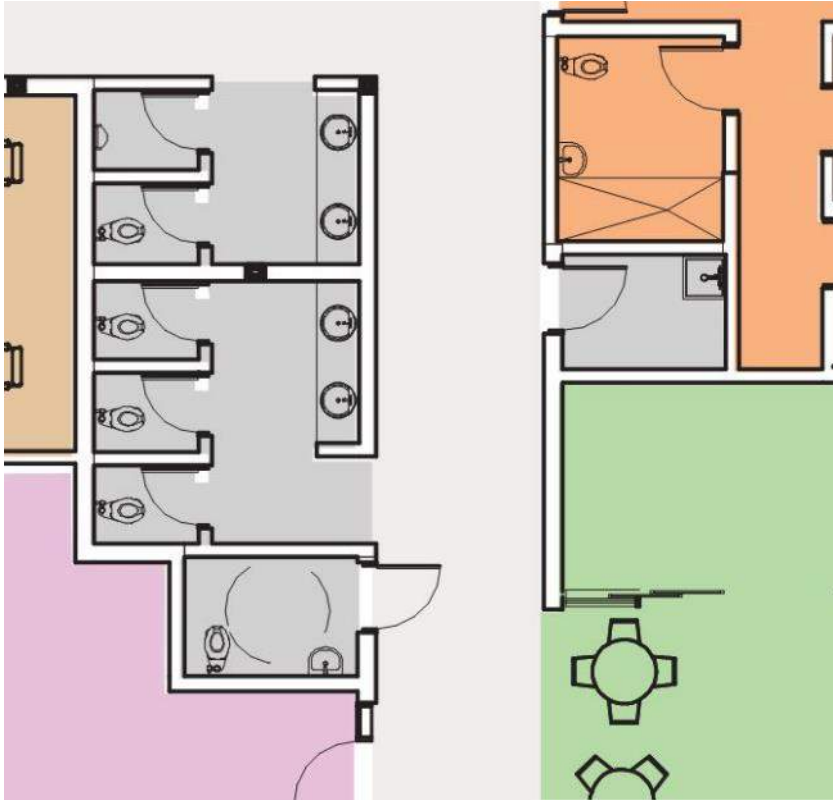
Soft Seating.

This is Hygge Time Learning.

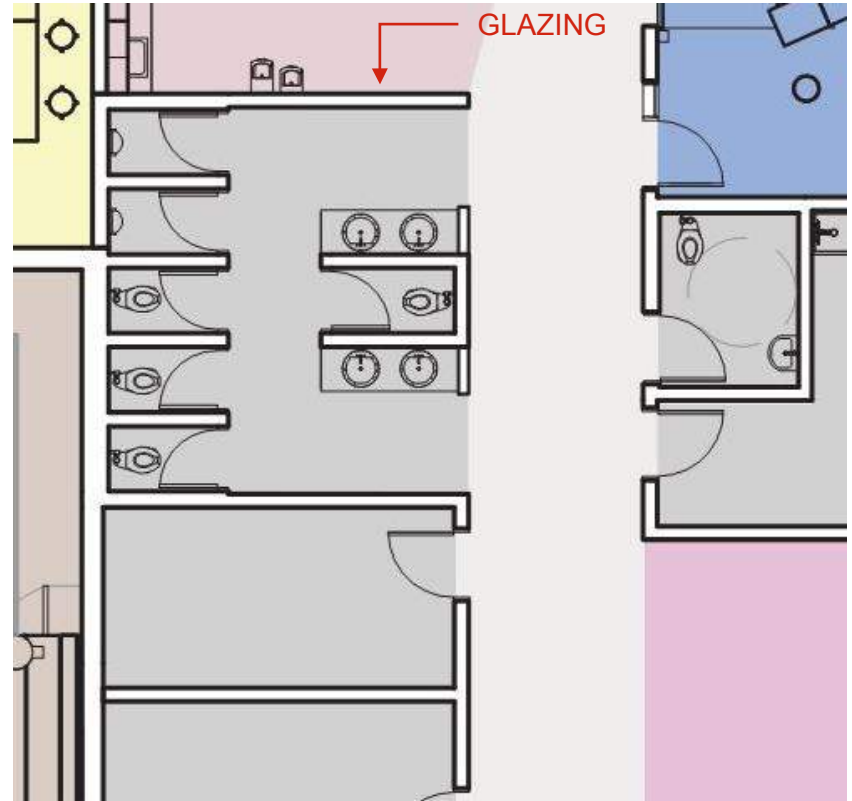
#9

**Individual toilet
rooms & open sink
areas**

GSCS

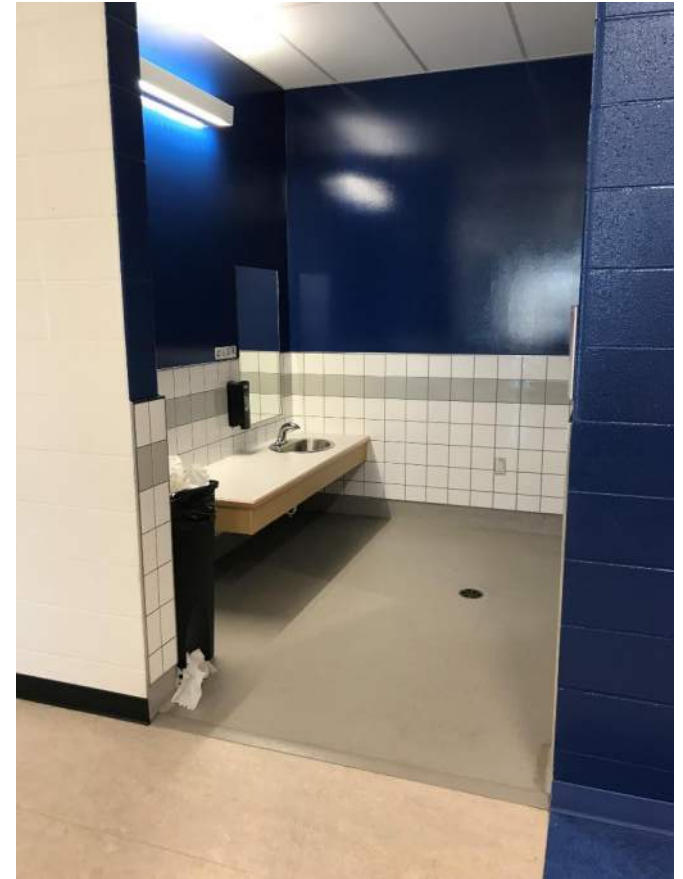


RPS











#10

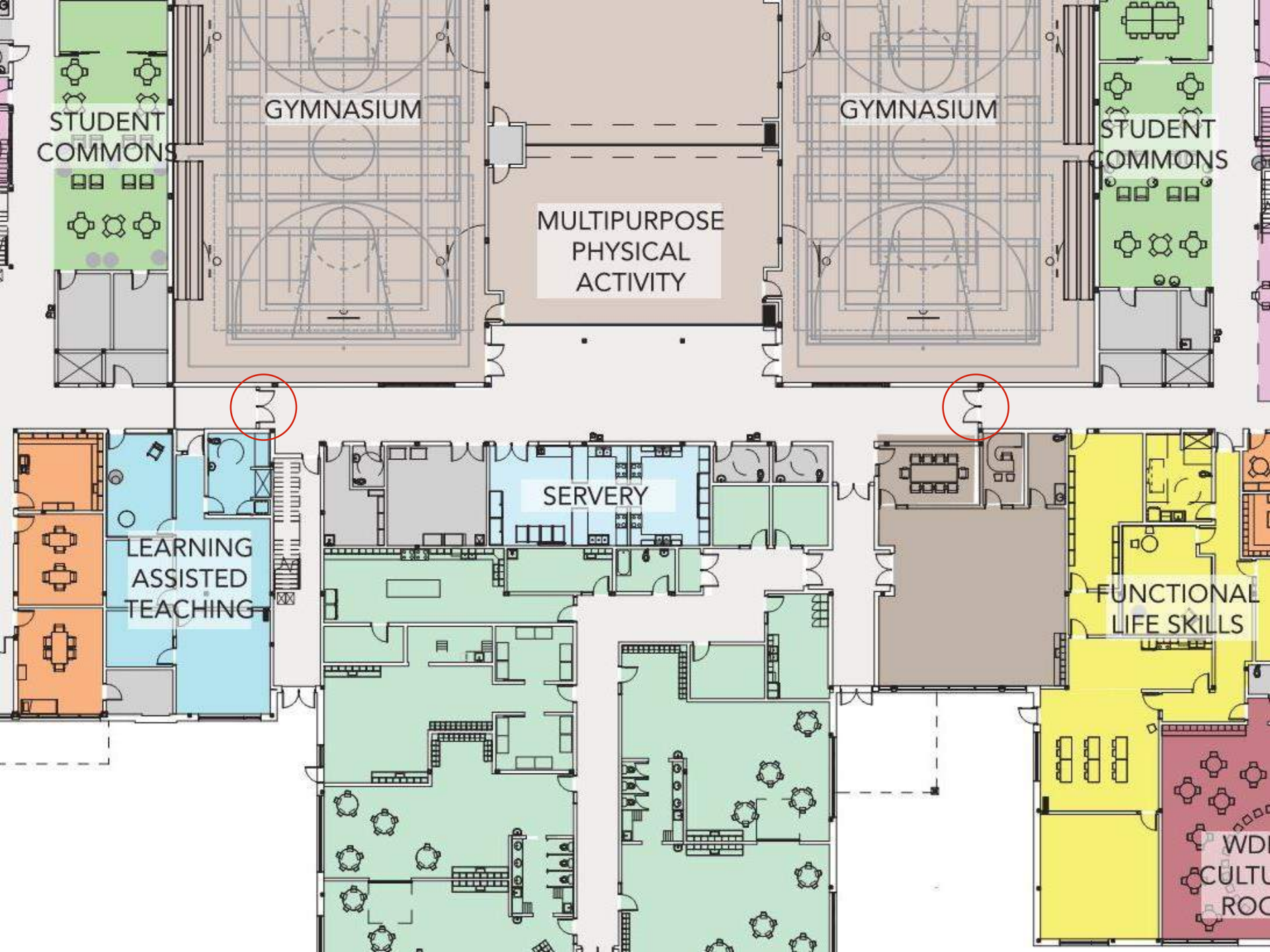
**Technologically
Rich**

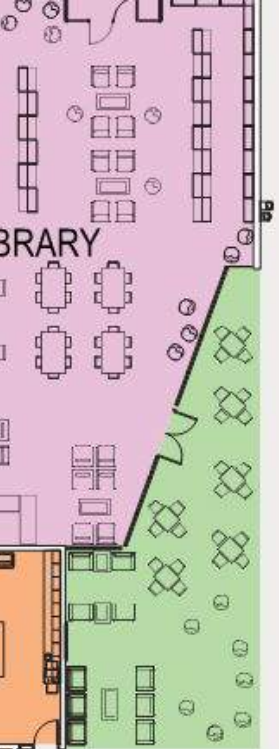


"WE NEED WIFI EVERYWHERE!"

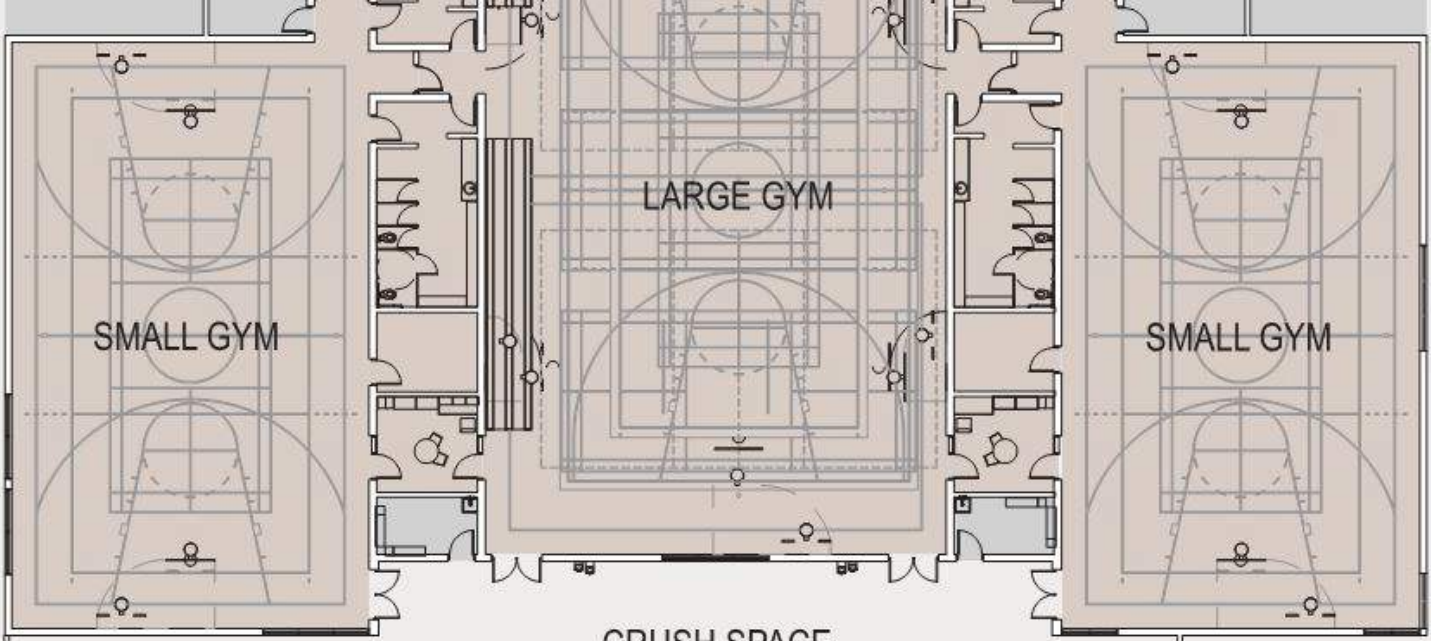
#11

**Joint use schools
increase
opportunities &
administration**





BRARY

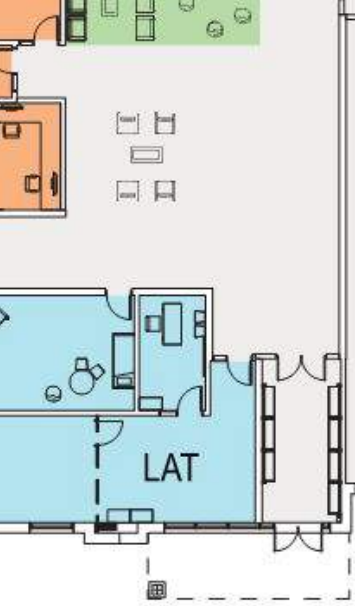


SMALL GYM

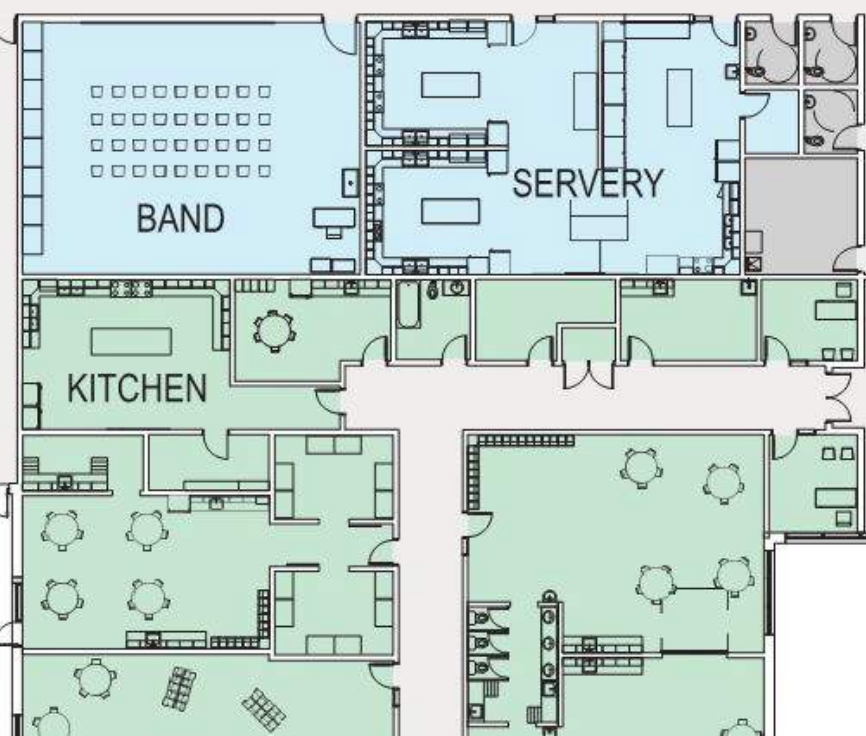
LARGE GYM

SMALL GYM

CRUSH SPACE



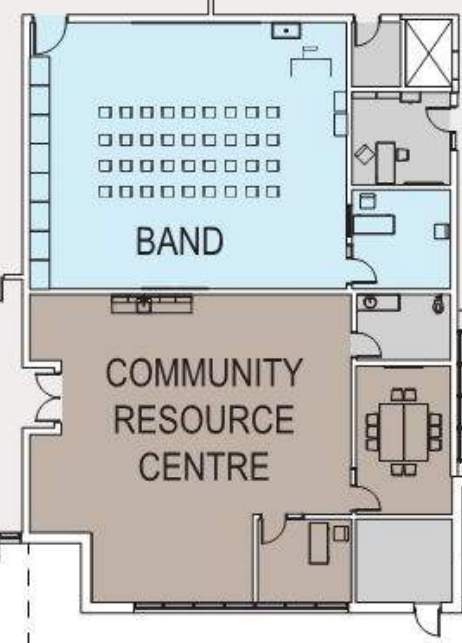
LAT



BAND

SERVERY

KITCHEN



BAND

COMMUNITY
RESOURCE
CENTRE











Gymnasium/Gymnase

Gymnasium









#12

**Collaboration
between divisions
& educators**

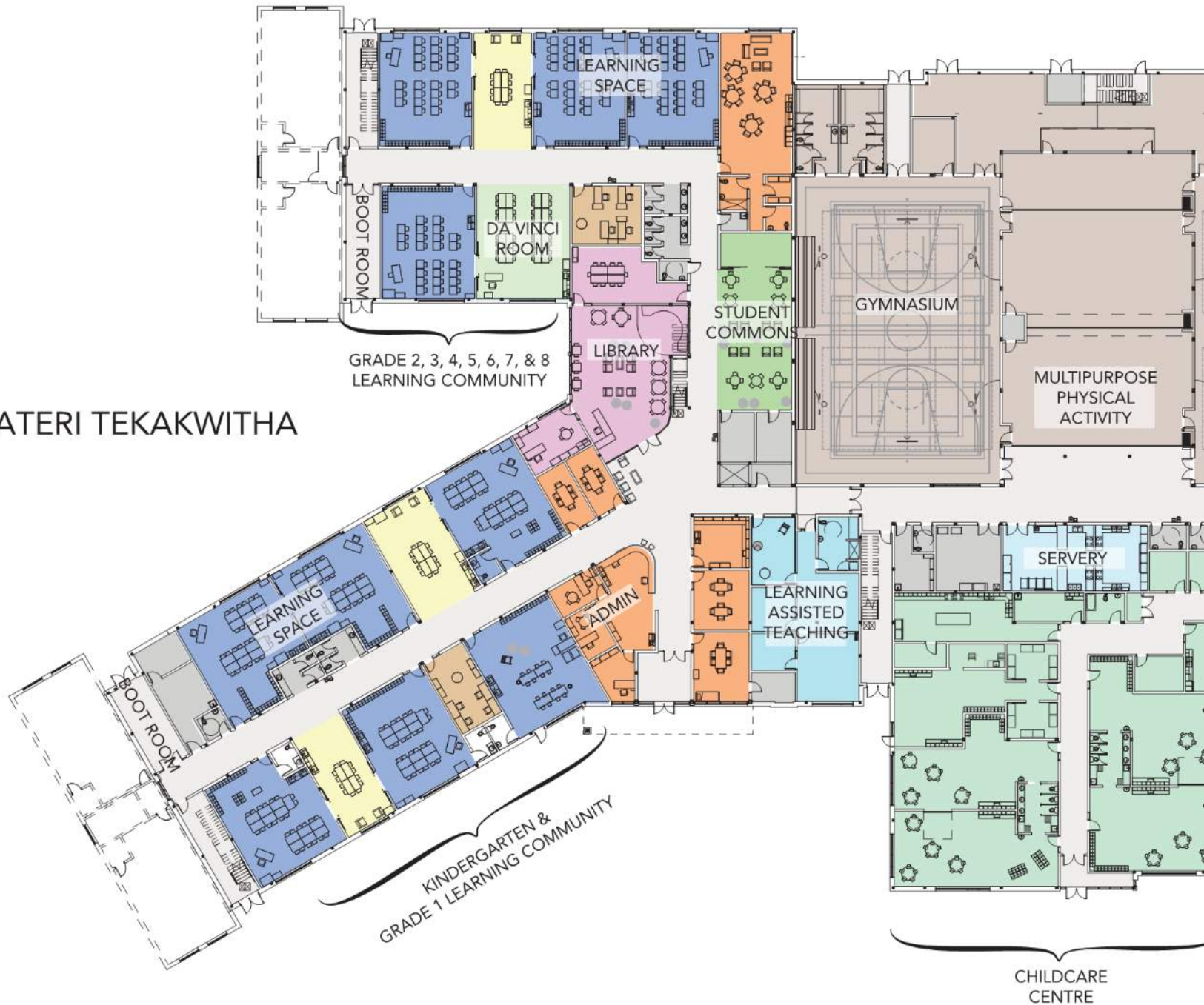




#13

**School communities
offset large scale**

ST. KATERI TEKAKWITHA



01 02 03 04 05 **06**

Conclusions

Top 13 Findings

1. Full range of learning environments
2. Directly adjacent and visible break out spaces
3. Variety of student seating, desks & tables
4. Mobile millwork & furniture
5. Thermal comfort, acoustics & daylighting matter
6. Outdoor learning environments
7. Recess counts!
8. Orientation & professional development
9. Individual toilet rooms & open sink areas
10. Technologically rich
11. Joint Use Schools increase opportunities & administration
12. Collaboration between divisions & educators
13. School communities offset large scale

Contact

Laura Plosz

laura.plosz@group2.ca

www.group2.ca

Dan Van Buekenhout

dan.vanbuekenhout@rbe.sk.ca

www.reginapublicschools.ca

Ryan Martin

rymartin@gscs.ca

www.gscs.ca