

PARTICIPATE



ECO-FRIENDLY FEATURES

AEROGEL

WIND TURBINE

SOLAR PANELS

LIGHT TUBES

ROOF TOP GRADEN

ROTATING BUILDING

RAINWATER/SNOW COLLETING SYSTEM



WallGoo.Com

COMMUNITY & SCHOOL FACILITIES

- ICE RINK
- RECREATIONAL ROOM
- OPEN GYM
- WIDE OPEN SPACE FOR MARTIAL ART



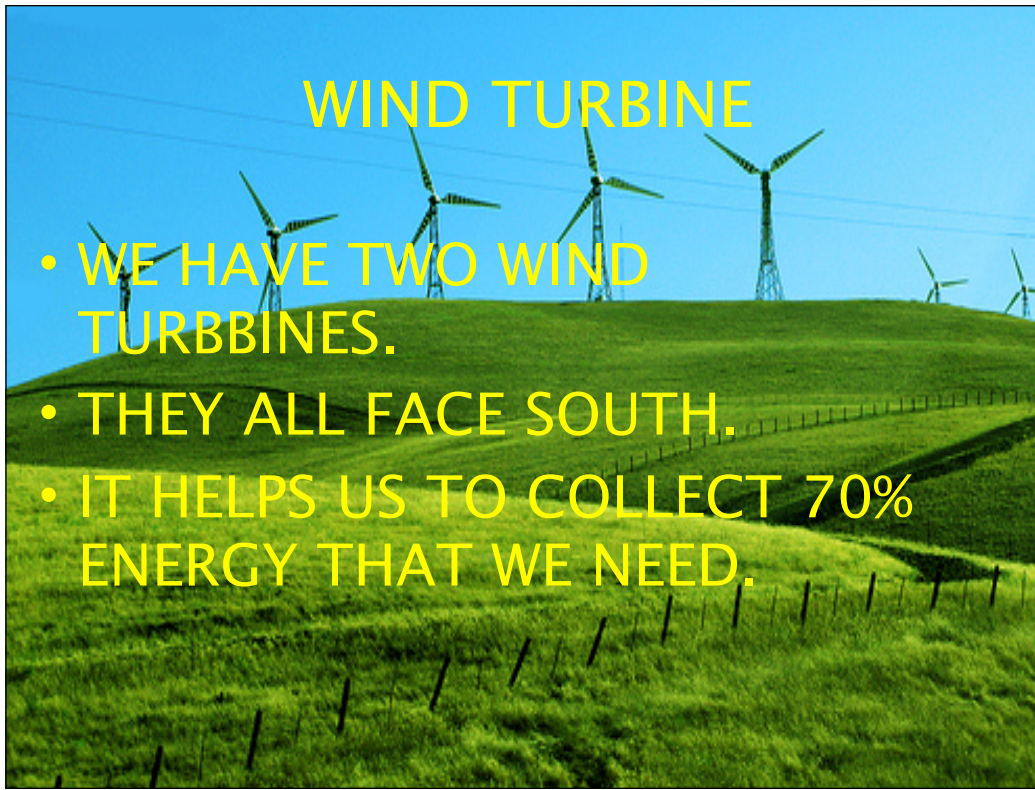
AEROGEL INSULATION

- IT IS ONE OF A KIND INSULATION
- IT IS MADE OF 95% AIR AND 5% CARBON DIOXIDE.
- AEROGEL STARTS TO BREAK DOWN AFTER 50 YEARS.
- FOR EXAMPLE :
IF IT IS -20 DEGREES CELCIUS OUTSIDE THEN IT WILL BE HALF THE TEMPERTURE INSIDE AND THAT SAVES A LOT OF ENERGY.
- AEROGEL IS A REALLY ECO-FRIENDLY INSULATION

SCIENCEphotOLIBRARY

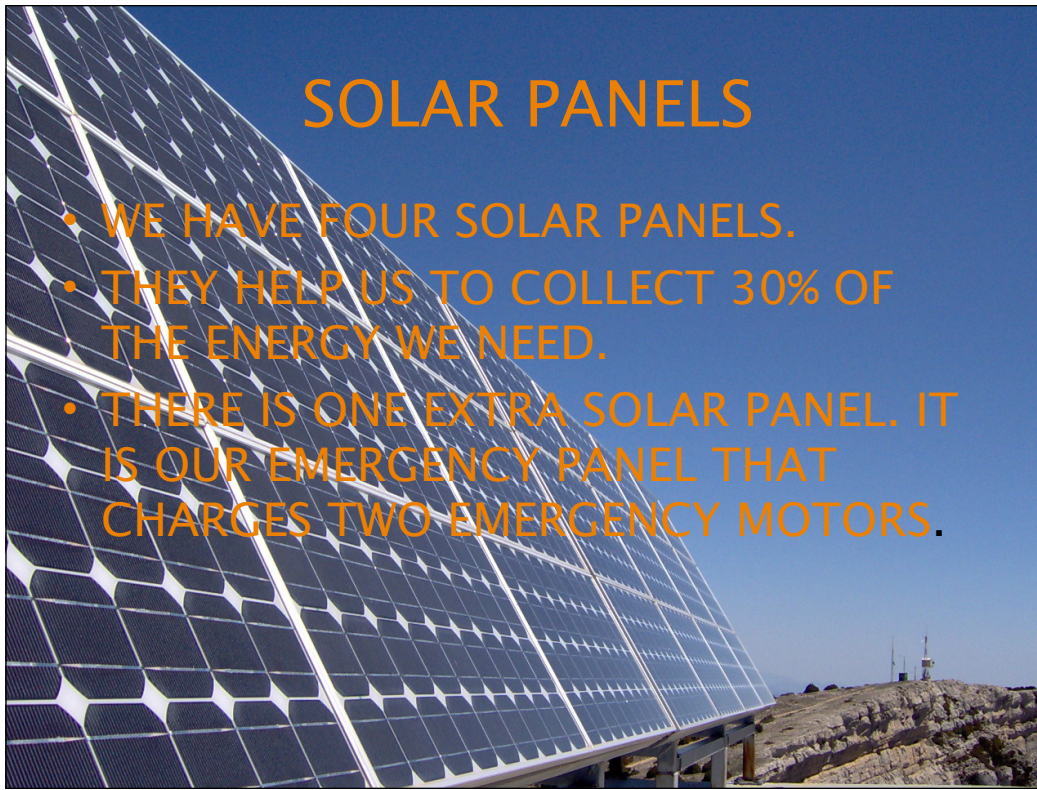
WIND TURBINE

- WE HAVE TWO WIND TURBBINES.
- THEY ALL FACE SOUTH.
- IT HELPS US TO COLLECT 70% ENERGY THAT WE NEED.



SOLAR PANELS

- WE HAVE FOUR SOLAR PANELS.
- THEY HELP US TO COLLECT 30% OF THE ENERGY WE NEED.
- THERE IS ONE EXTRA SOLAR PANEL. IT IS OUR EMERGENCY PANEL THAT CHARGES TWO EMERGENCY MOTORS.



LIGHT TUBE

- IT'S A SYSTEM THAT LETS LIGHT THROUGH FROM THE ROOF TOP GARDEN.
- THE LIGHT TUBE PROVIDES LIGHT TO THE OPPOSITE SIDE OF THE SCHOOL FROM THE SUN.
- IT IS ECO-FRIENDLY BECAUSE IT DOESN'T USE ANY ENERGY!



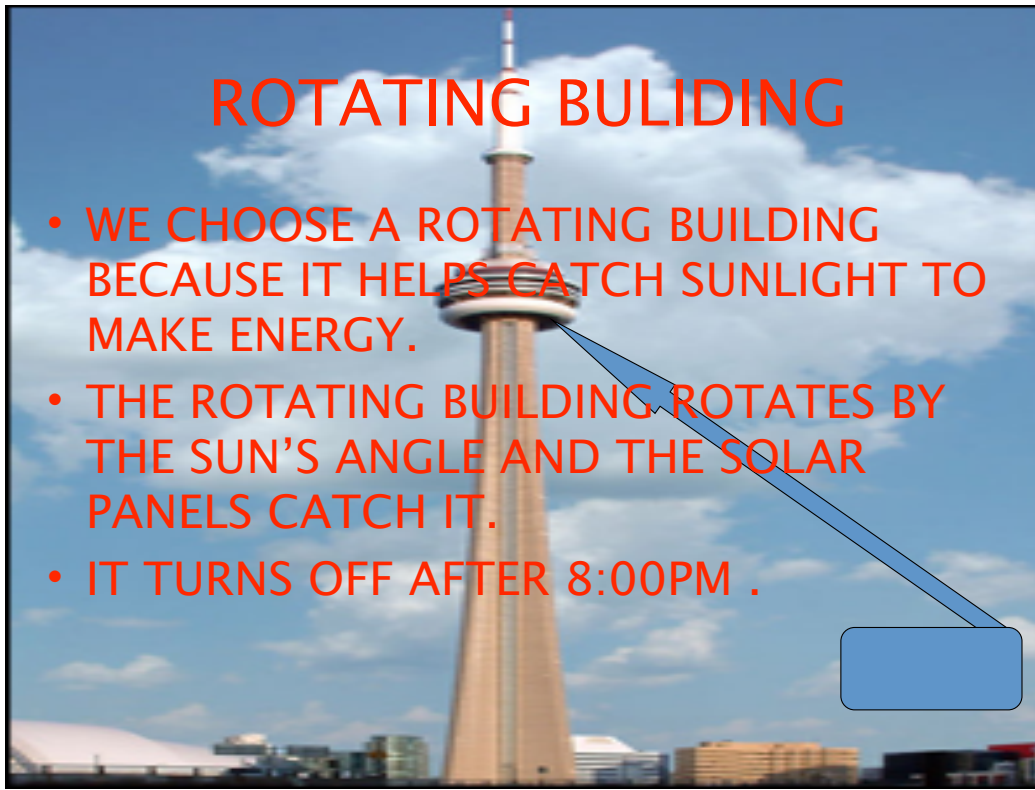
ROOF TOP GRADEN

- WE WANT TO HAVE A CLASS THAT IS ECO FRIENDLY AND THAT TEACHES STUDENTS TO GROW PLANTS AND EAT HEALTHY.
- IT IS A CLASS THAT HELPS SOME STUDENT LOWER THEIR STRESS LEVEL!
- VEGETABLES THAT IS GROWN IN THE ROOF TOP GARDEN IS SENT TO THE CAFETERIA.



ROTATING BUILDING

- WE CHOOSE A ROTATING BUILDING BECAUSE IT HELPS CATCH SUNLIGHT TO MAKE ENERGY.
- THE ROTATING BUILDING ROTATES BY THE SUN'S ANGLE AND THE SOLAR PANELS CATCH IT.
- IT TURNS OFF AFTER 8:00PM .



RAINWATER COLLECTING SYSTEM

- IT CATCHES THE RAIN OR SNOW AND BOILS THE WATER TO CLEAN IT. AFTER IT COOLS DOWN, IT IS SENT THROUGH THE PIPES TO BE USED AS TOILET WATER.
- IT CUTS DOWN THE WATERING BILL FOR THE SCHOOL.
- THEY CAN SAVE THAT MONEY AND SPEND IT ON OTHER TECHNOLOGY.

