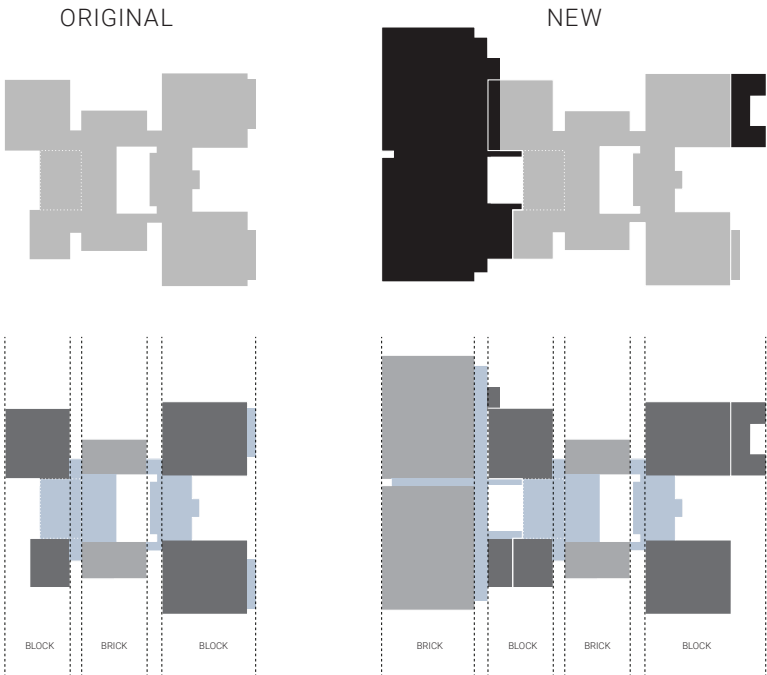


Constructed and renovated in phases while still occupied, Adrienne C. Nelson High School opened in the Fall of 2021, serving 1,600 students and nearly doubling the size of the original building.

For years North Clackamas School District had its sights on adding a fourth high school to address overcrowding. The first step towards realizing the new school was implementing Rock Creek Middle School, designed and completed by Bora in 2010 with the intent to one day convert and expand it into the envisioned high school. In 2016 this dream became reality.

Along with increasing building energy efficiency and student safety, the design upgraded the middle school facility with all the requisite elements of a high school, including improved classroom technology infrastructure for STEM and vocational education programs. A new performing arts wing includes a black box theater and 600-seat auditorium, while a new athletic wing provides a weight room, wrestling room, and new varsity gym alongside a renovation of the existing gym. A new two-story classroom wing adds 16 new classrooms, including two chemistry labs, while a new career center and counseling center serve as vital student resources. The expanded 66-acre site features new exterior athletic facilities, including a football stadium and track with covered bleachers and a press box, a varsity baseball field, and ample sports amenity upgrades.



PROJECT STATS

- Owner**
North Clackamas School District
- Grades**
9-12
- Scope**
Renovation/Addition
- Size**
228,000 SF
- Number of students**
1,600

TEAM

- Architect**
Bora Architecture & Interiors
- Landscape Architect**
Lango Hansen
- Structural Engineer**
KPFF
- MEP Engineer**
PAE
- Civil Engineer**
HHPR
- Theater Consultant**
The Shalleck Collaborative
- Contractor**
Lease Crutcher Lewis
- Owner Representative**
DAY CPM

PROJECT HIGHLIGHTS

- 16 additional classrooms**
- 600-seat auditorium**
- Black box theater**
- Varsity gymnasium**
- Weight & wrestling rooms**
- Track and field stadium**



Bridging the Gap Between Old & New

Featuring an understated yet distinct and more sophisticated materials palette, the design is guided by themes of simplicity, flexibility and connectivity. By focusing on the points of attachment between old and new, the design respected the existing buildings while embracing the identity of the new high school. Covered and uncovered outdoor spaces orient students while adding a human scale, while spatial variation in the corridors provides relief and accommodates flexible programming for the future. The newly completed high school exists as a cohesive campus, celebrating thoughtful, intentional connections among its buildings.

“This is going to be a place where students know they are enough, and they can build from that and grow from that and become the wonderful human beings they are designed to be.

Justice Nelson



BORA