



MHTN
ARCHITECTS

DESIGN WITH ME, NOT FOR ME

How Community Engagement Elevated the Design Process

WHO WE ARE



KEN CRAWFORD
Director of Support Services
and Athletics
Ogden School District



BRIAN PARKER
Vice President
K-12 Learning Environments
MHTN Architects



CLIFFORD CURTIS
Principal
K-12 Learning Environment
MHTN Architects



BEN HANSEN
Associate Principal
K-12 Learning Environments
MHTN Architects



OGDEN, UTAH



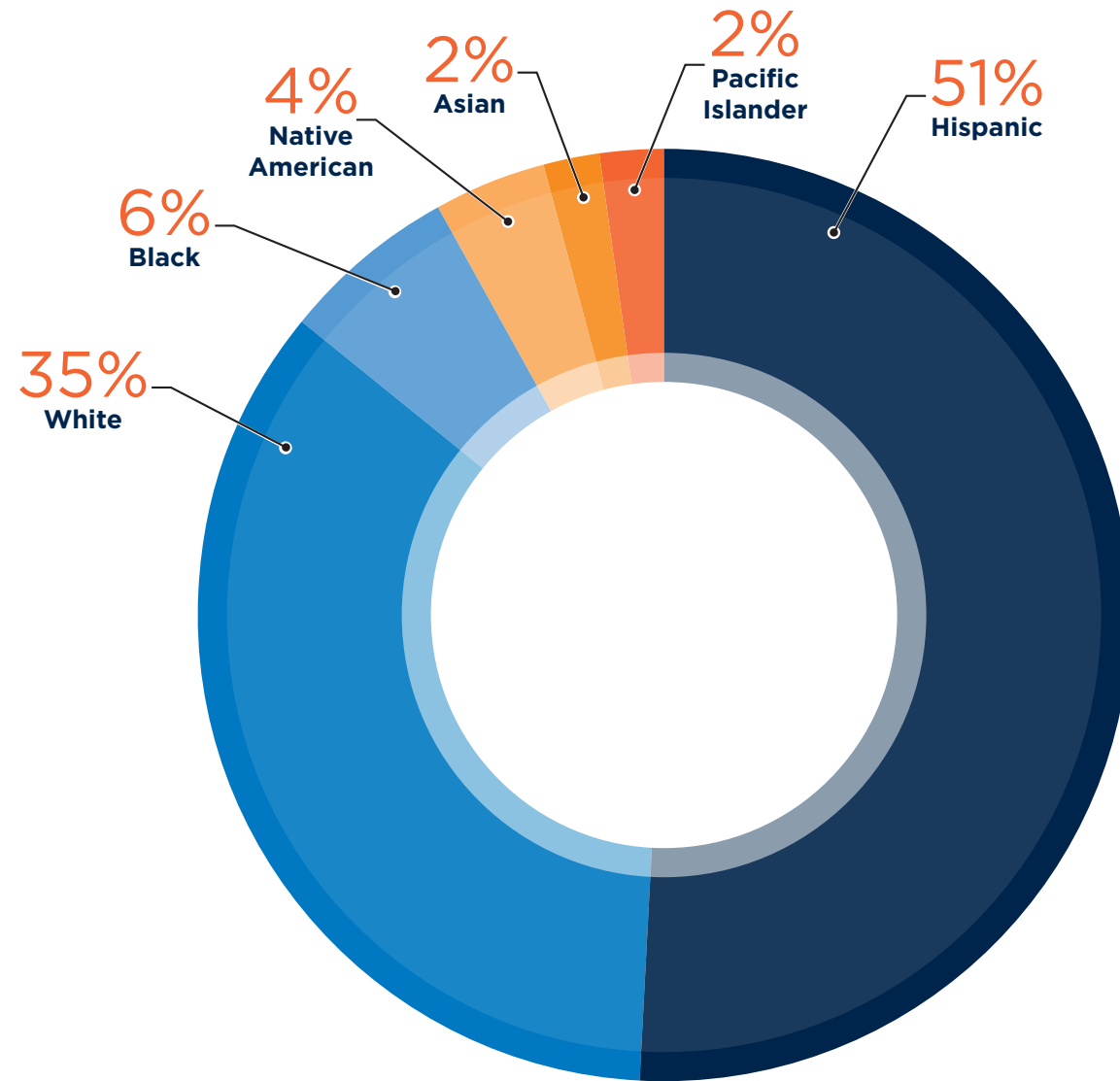
**What comes to mind
when you think of Utah?**

OGDEN, UTAH





OGDEN SCHOOL DISTRICT



Ogden School District Enrollment

10,151

68% of our student population qualify for free or reduced lunch, 2nd highest in the state.

23% Limited English Proficient



EAST RIDGE ELEMENTARY SCHOOL

1/2 of student population is enrolled in **Dual Language Immersion**

4 classes per grade

749 students — **largest** elementary school in the Ogden School District

53% non-white

60% qualify for **free** or **reduced lunch**



CULTURAL INFLUENCES



PRE-DESIGN & COMMUNITY ENGAGEMENT PROCESS

NEW BRIDGE ELEMENTARY SCHOOL | Post Occupancy Evaluation



- + Like the hallway learning area
- + Like that the teacher workstation is separate from the learning studio
- + Like lots of storage
- + Like lots of natural light
- + I use my sliders to create a more welcoming environment
- + I like the flexible furniture, large windows, glass sliders, and white board walls
- + I write on my glass sliders as an extension of my whiteboards





- + Not enough bulletin board space
- + More counter space
- + Create an outdoor learning space
- + More space in the classroom
- + Need an audio system in the hallway learning space
- + Glass film makes it hard to see inside the small intervention room

TEACHER DESIGN TEAM



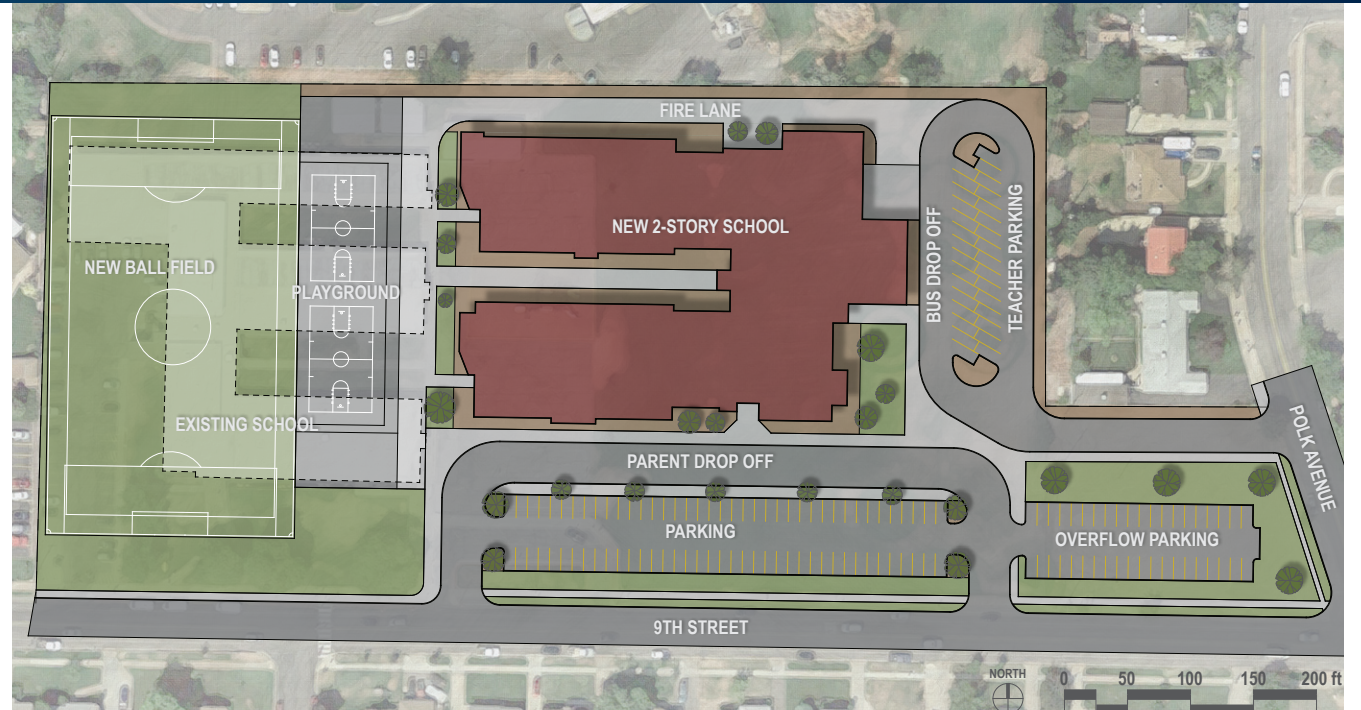
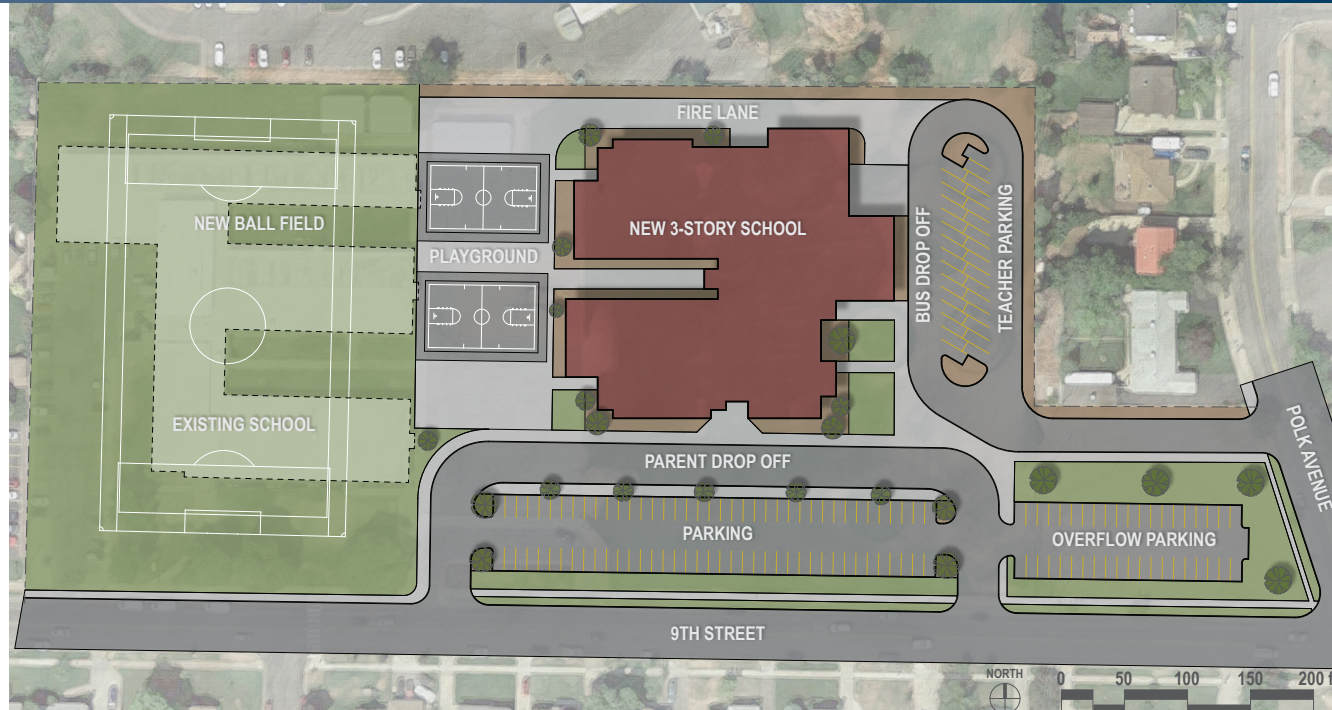
WORKSHOPS



TOWN HALL MEETINGS



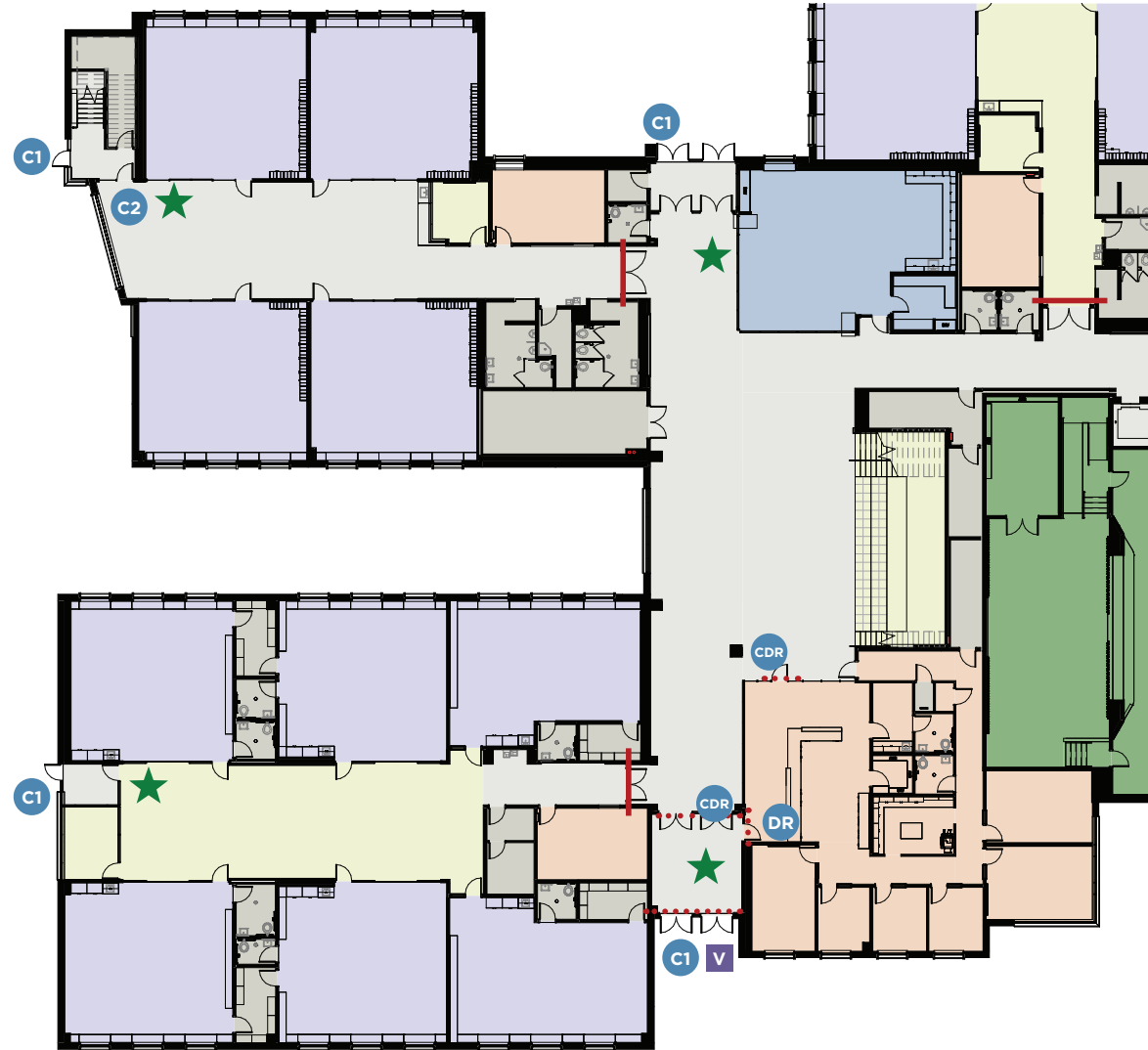
TOWN HALL MEETINGS





MHTN ARCHITECTS | R.L. NICHOLS & ASSOCIATES

Ogden City School District



LEGEND

- C1** Ext. door elec. hardware & card reader Priority 1 (Electrify all exterior doors in vestibule w/ one conveniently located card reader)
- C2** Ext. door elec. hardware & card reader Priority2 (Electrify all exterior doors in vestibule w/ one conveniently located card reader)
- DR** Remote button door release
- CDR** Remote button door release with Card Reader
- V** Video intercom
- DPS** Door position switch
- RPS** Door position switch to roof access
- Compartmentalization doors with Card Reader and remote activation and Mag Hold Open
- ⋯ Compartmentalization doors with Card Reader and remote activation no Mag Hold Open
- CO** Door with card reader only
- G** Gymnasium Door with mag hold opens. Both doors in vestibule to be connected to performance switch that will release mag hold open.
- ★ Add one-button control for lock-out and lock-down

Safety / Security Study Floor Plan Level 1 A
EAST RIDGE ELEMENTARY

2 December 2019



THE HIKE

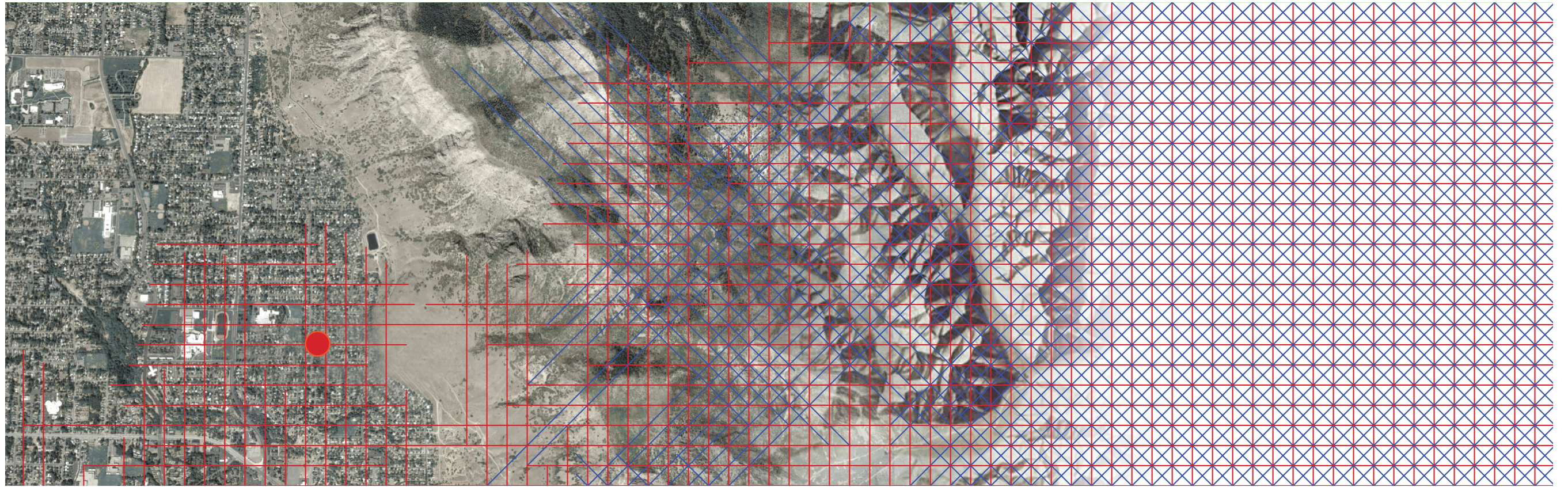


THE HIKE



THE HIKE





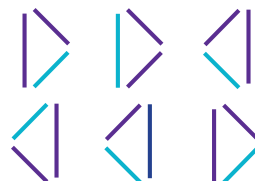
SYNTHESIS



INDIAN PAINTBRUSH
Castilleja



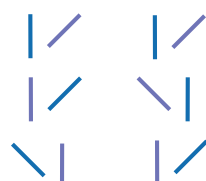
ZION SWEET PEA
Lanthyrus Brachycalyx



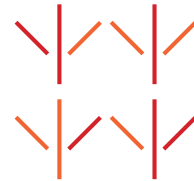
BRITTLE PRICKLY PEAR CACTUS
Opuntia Fragilis



LUPINE
Lupinus



WESTERN TANAGER
Piranga Ludoviciana

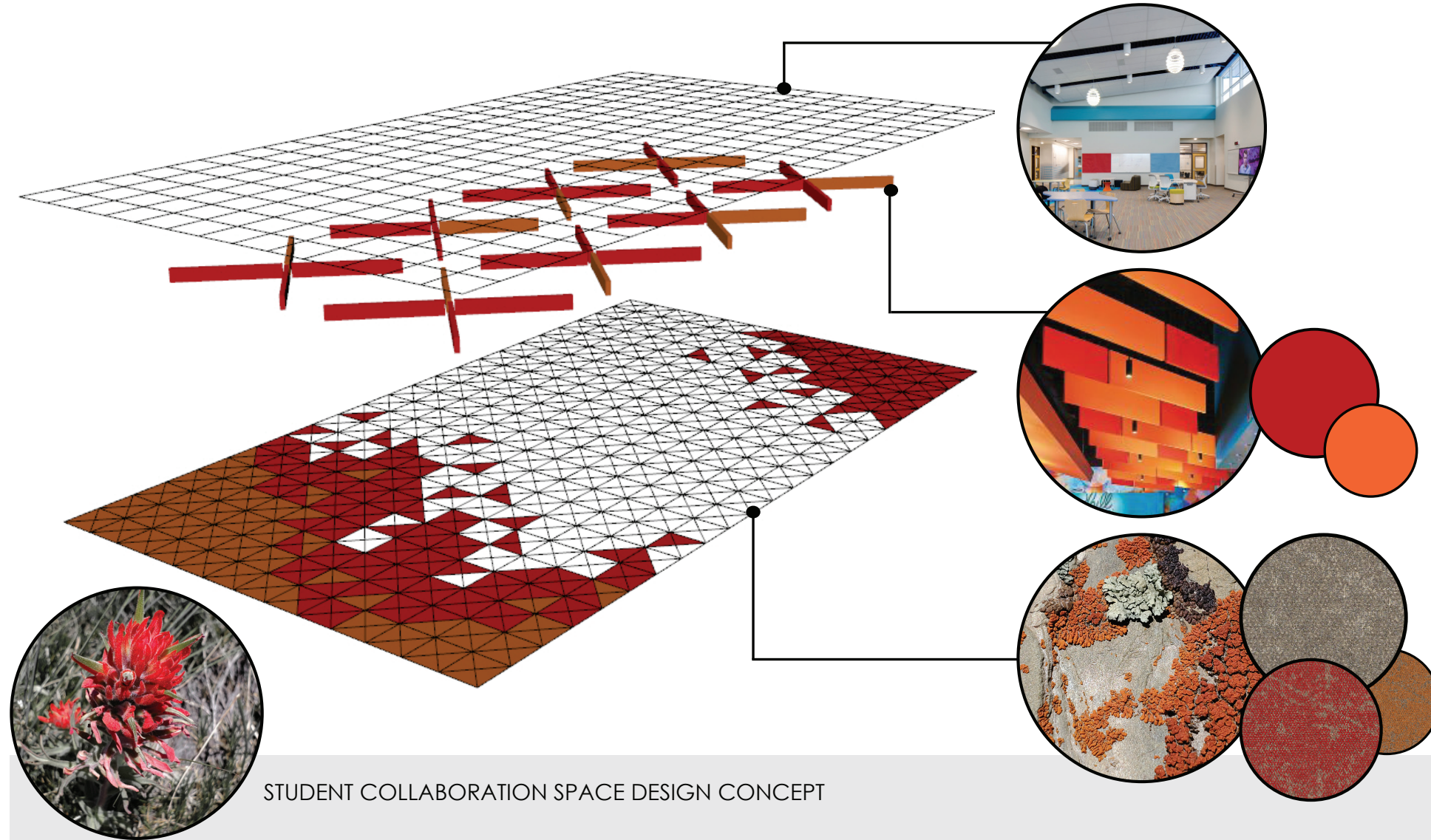


FOREST TENT CATERPILLAR
Malacosoma Distria



SILVERY BLUE
Glaucopsyche Lygdamus





SYNTHESIS



SYNTHESIS



DESIGN RESULT

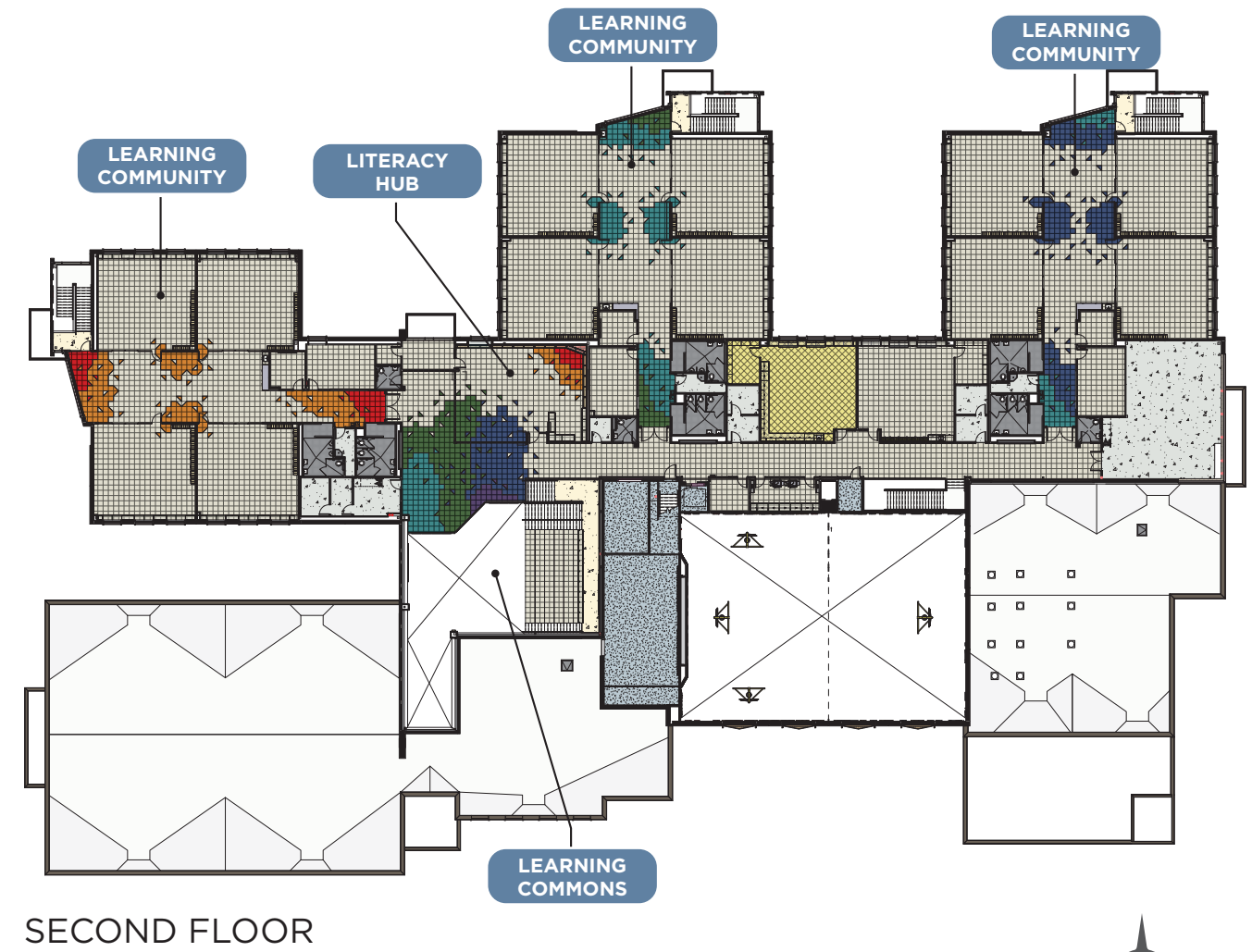
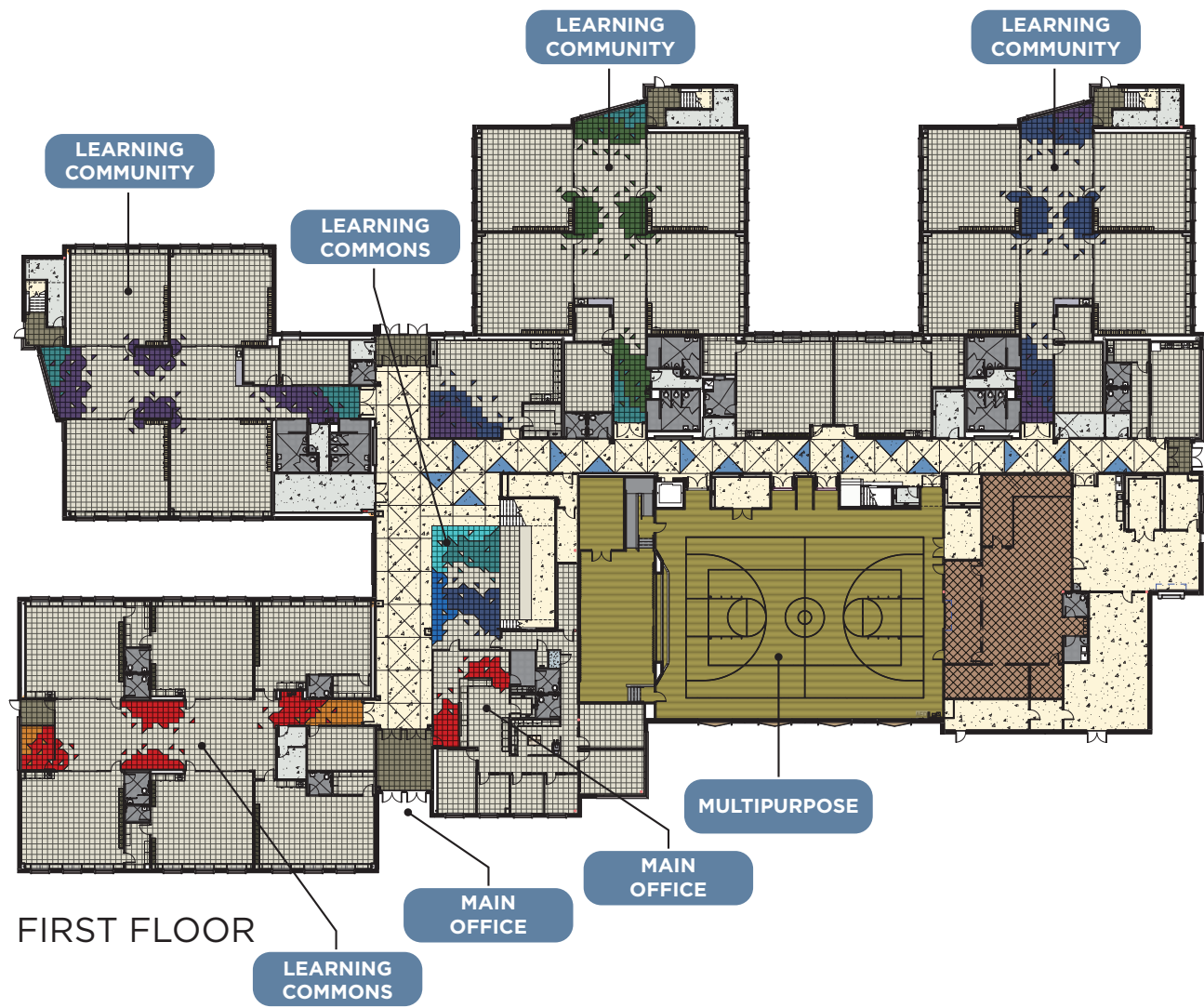
EXISTING SITE



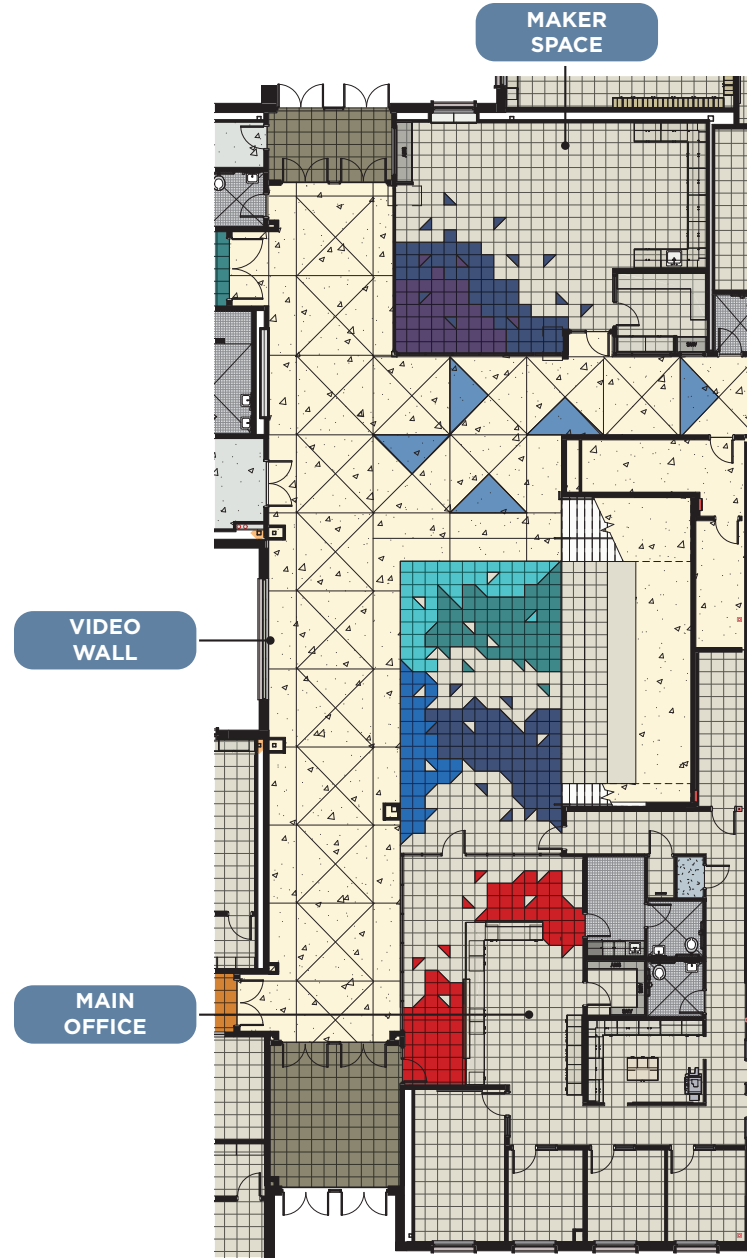
SITE PLAN



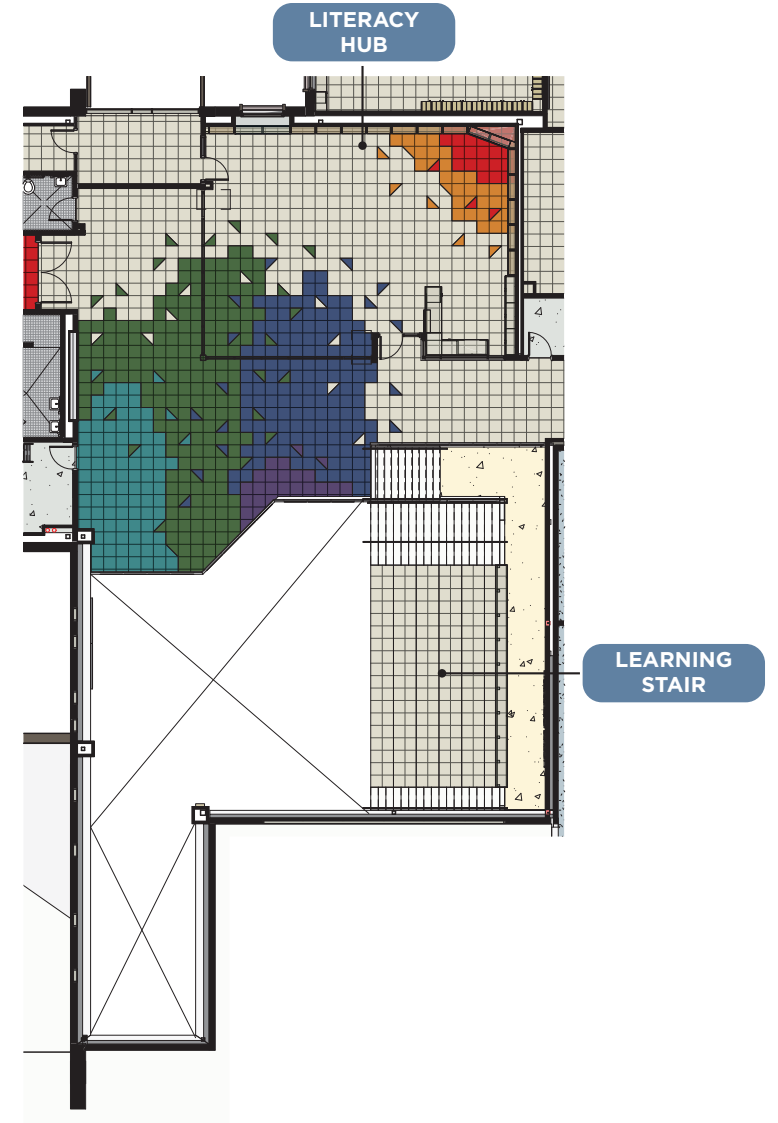
FLOOR PLANS



LEARNING COMMONS



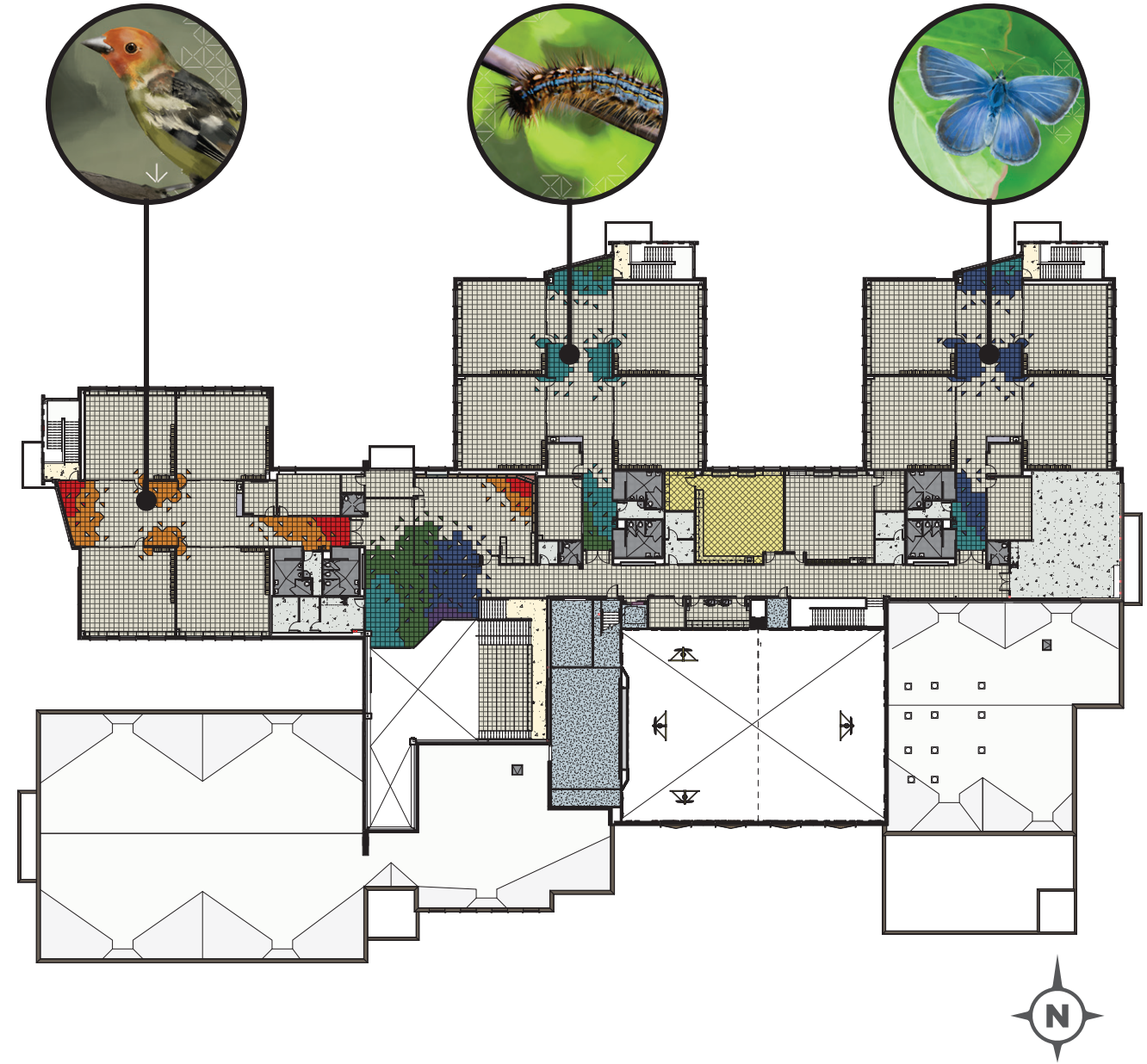
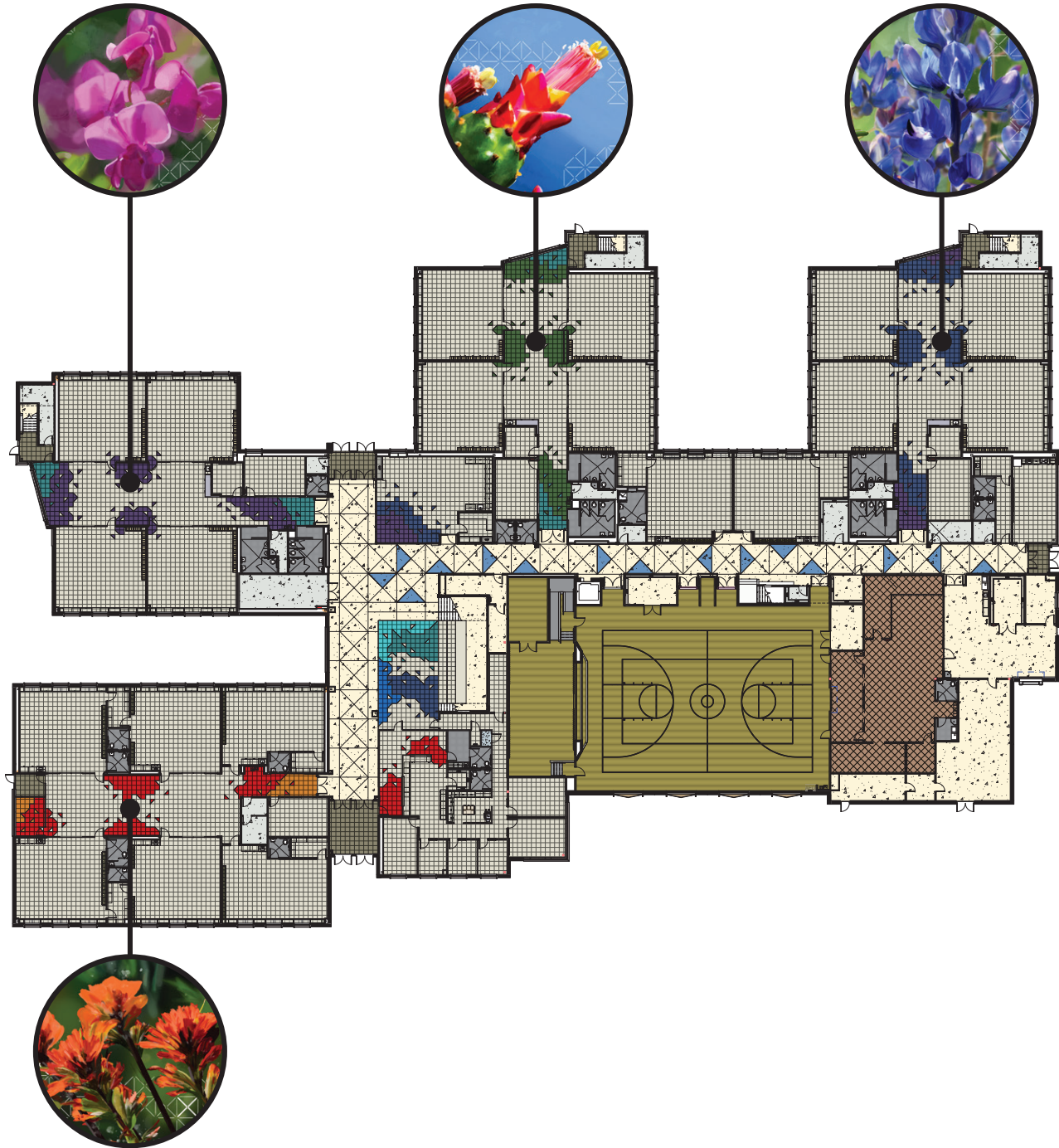
FIRST FLOOR



SECOND FLOOR



SCHOOL THEMING



ENVIRONMENTAL GRAPHICS



OGDEN, UTAH
View From Lewis Peak



WESTERN TANAGER
Piranga Ludoviciana



FOREST TENT CATERPILLAR
Malacosoma Disstria



SILVERLY BLUE
Glaucopsyche Lygdamus



INDIAN PAINTBRUSH
Castilleja



ZION SWEET PEA
Lathyrus Brachycalyx



BRITTLE PRICKLY PEAR CACTUS
Opuntia Fragilis



LUPINE
Lupinus



BUILDING EXTERIOR



LEARNING COMMONS





FOREST TENT CATERPILLAR
Malacosoma Disstria



LEARNING COMMUNITY



LEARNING COMMUNITY



WAYFINDING & SIGNAGE

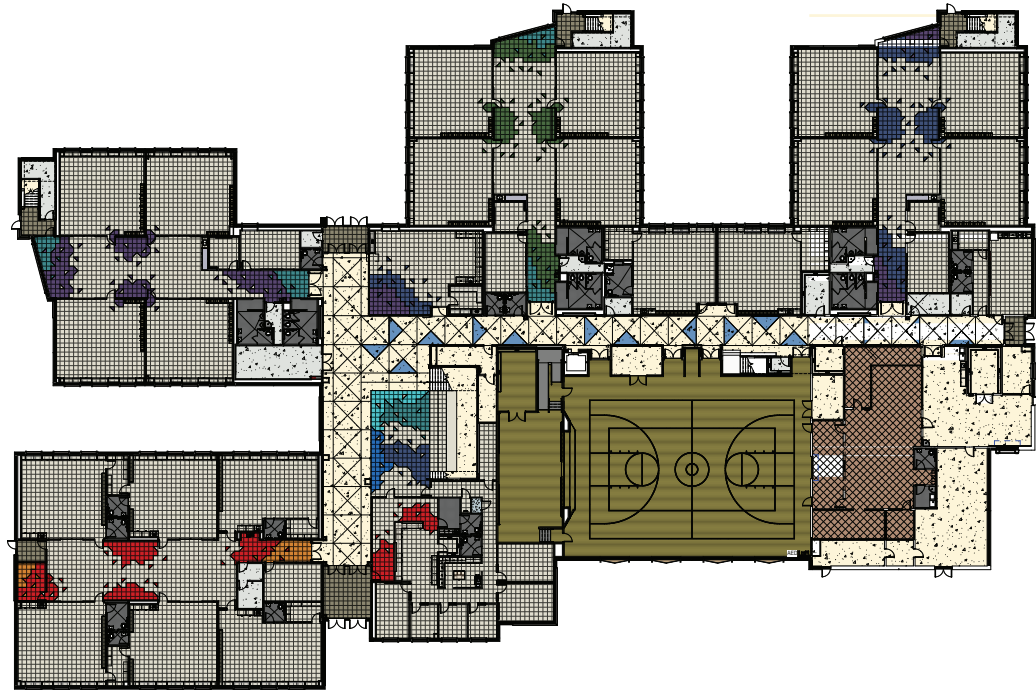


LITERACY



POST OCCUPANCY EVALUATION

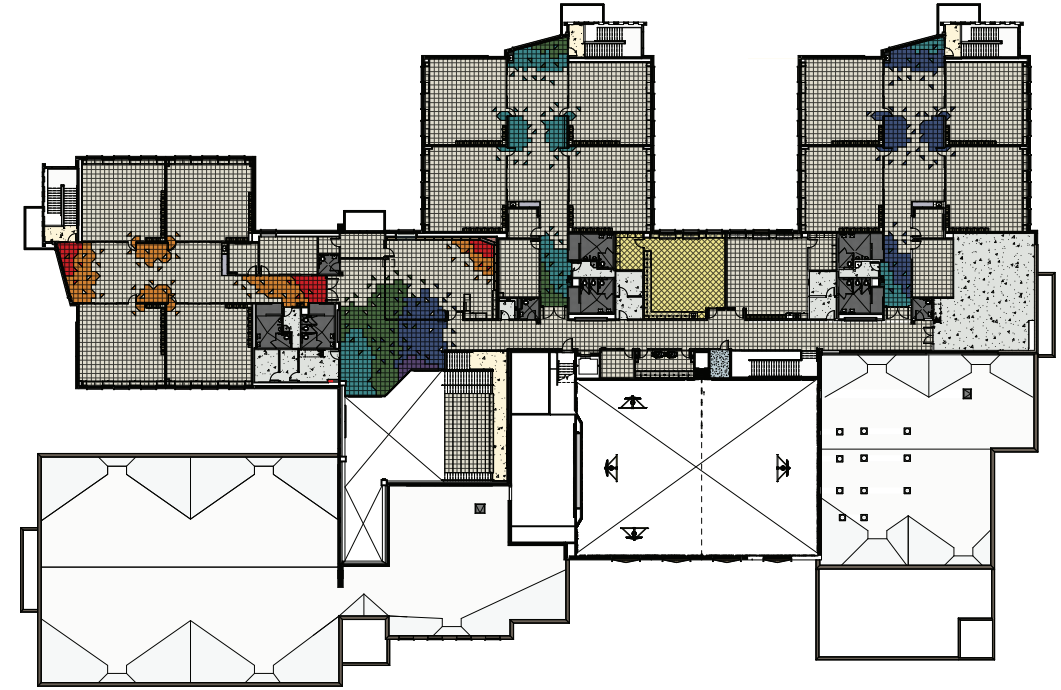
STUDENT SURVEY



FIRST FLOOR



WHAT IS YOUR FAVORITE PLACE TO BE IN YOUR SCHOOL?
Place a dot sticker on your favorite place to be in your school



SECOND FLOOR



WHAT IS YOUR FAVORITE PLACE TO BE IN YOUR SCHOOL?
Place a dot sticker on your favorite place to be in your school



 **MHTN**
ARCHITECTS

My School Makes Me Feel.....
Complete the sentence above. Write on the board how your school makes you feel.

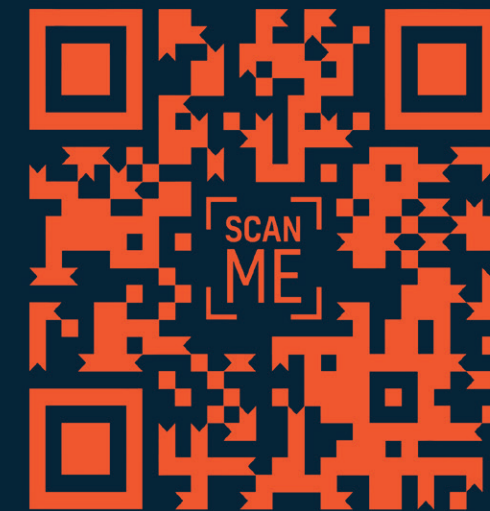




MHTN
ARCHITECTS

FACULTY SURVEY

COMPLETE BY MARCH 15, 2024



SCAN HERE
OR

VISIT: <https://www.surveymonkey.com/r/EastRidgePO>

EAST RIDGE ELEMENRARY SCHOOL
POST OCCUPANCY EVALUATION



FOCUS GROUPS



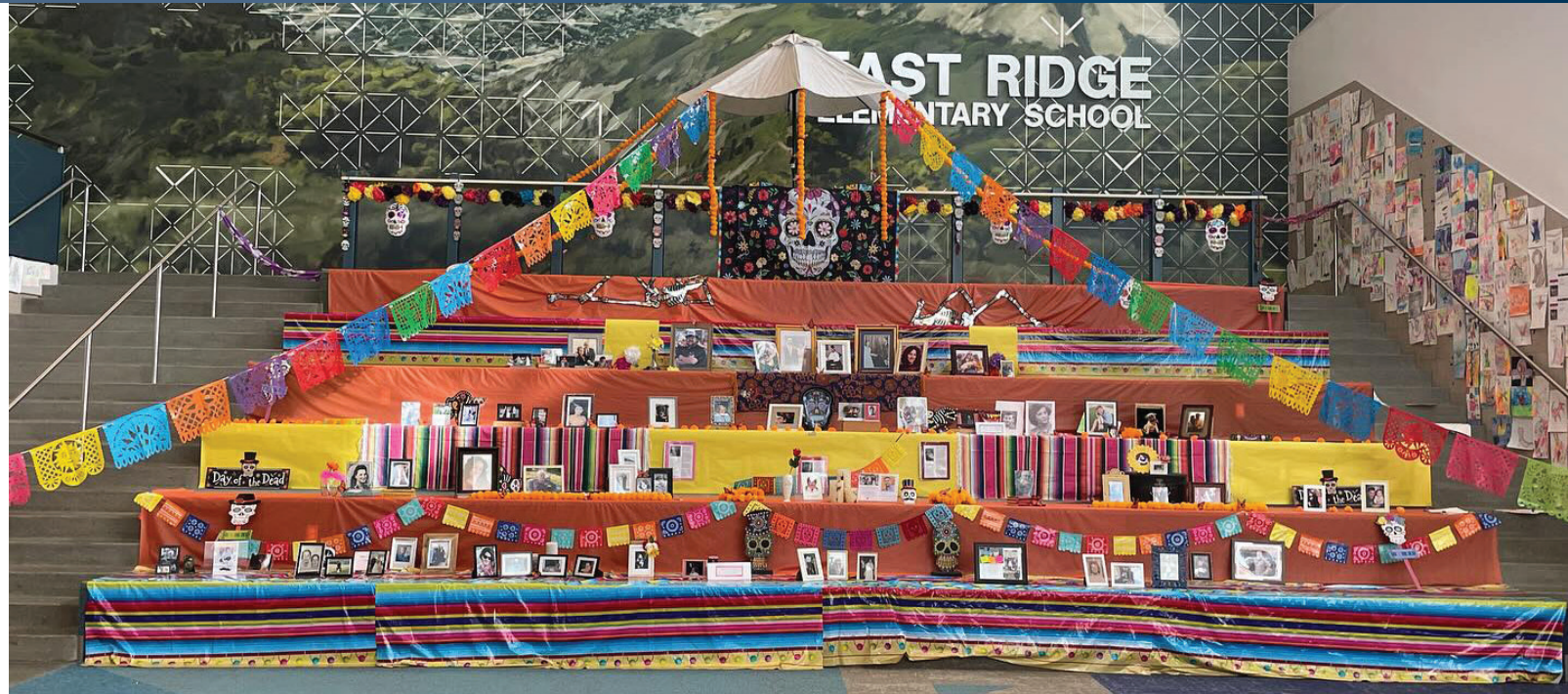
INTERVIEWS



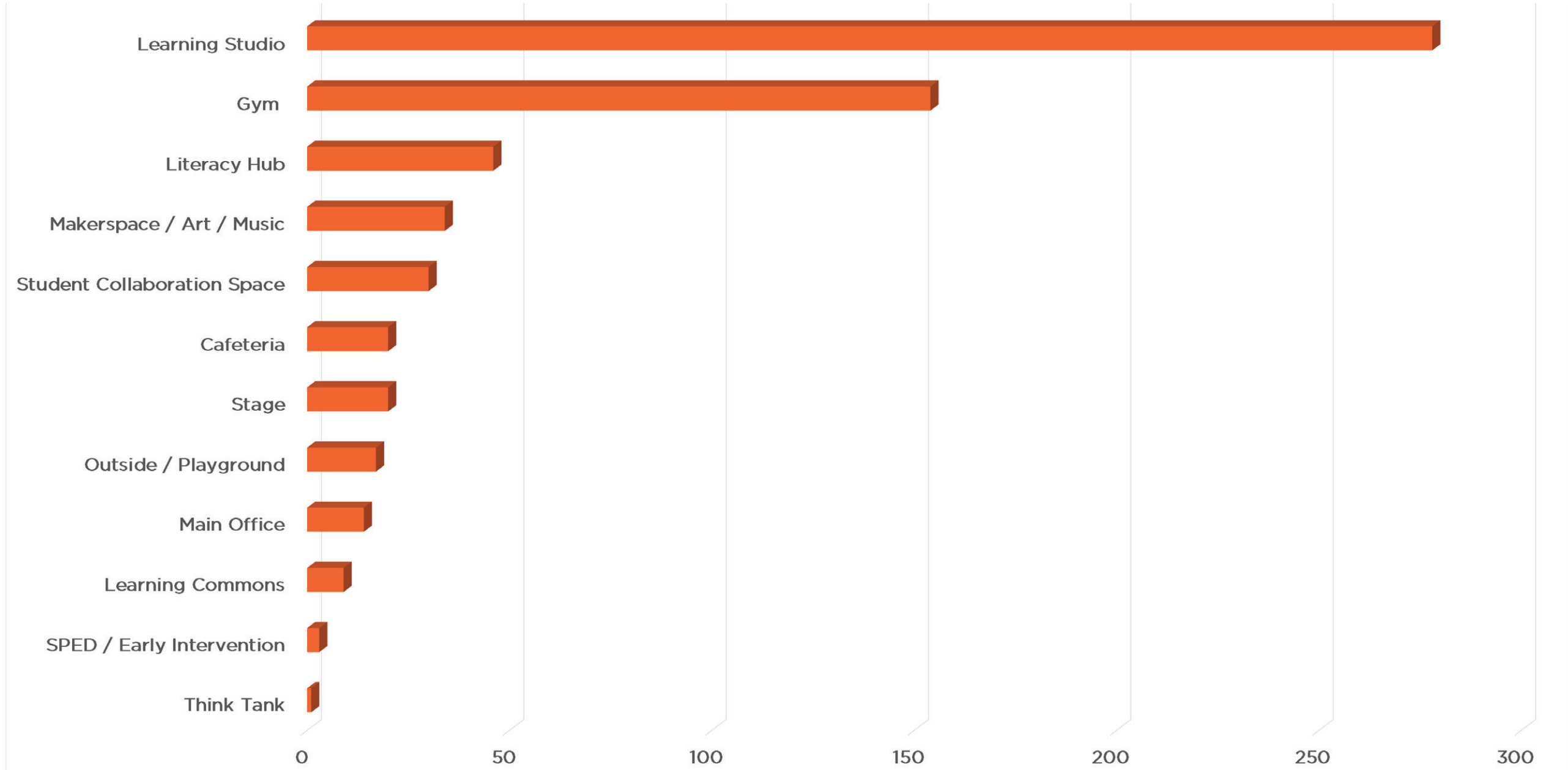
OBSERVATION



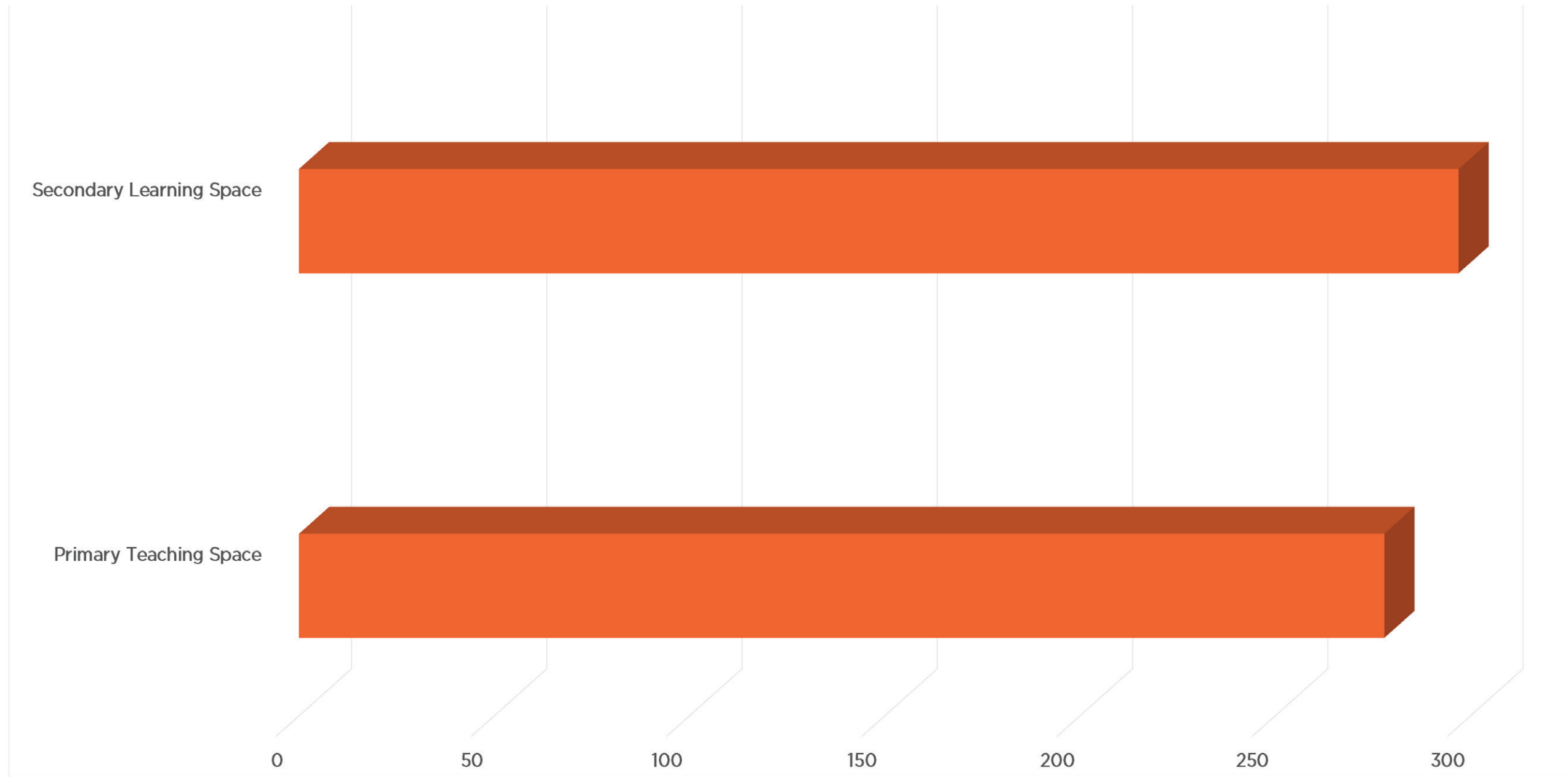
OBSERVATION



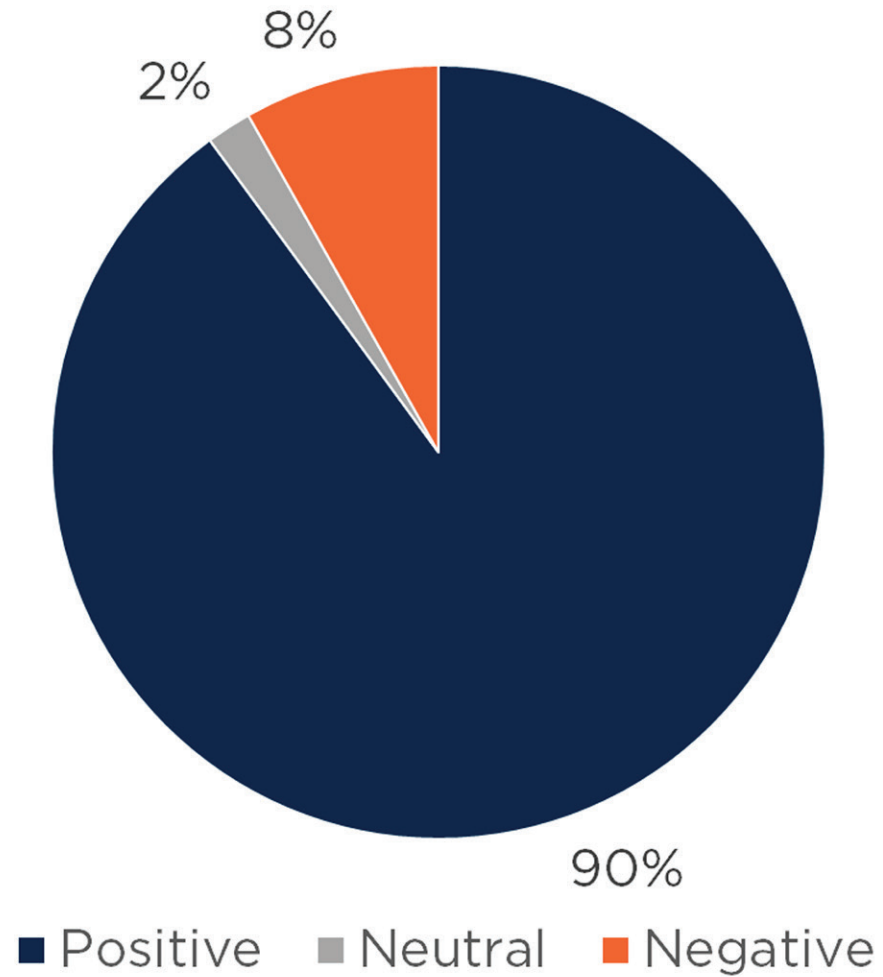
MY FAVORITE PLACE TO BE/LEARN...



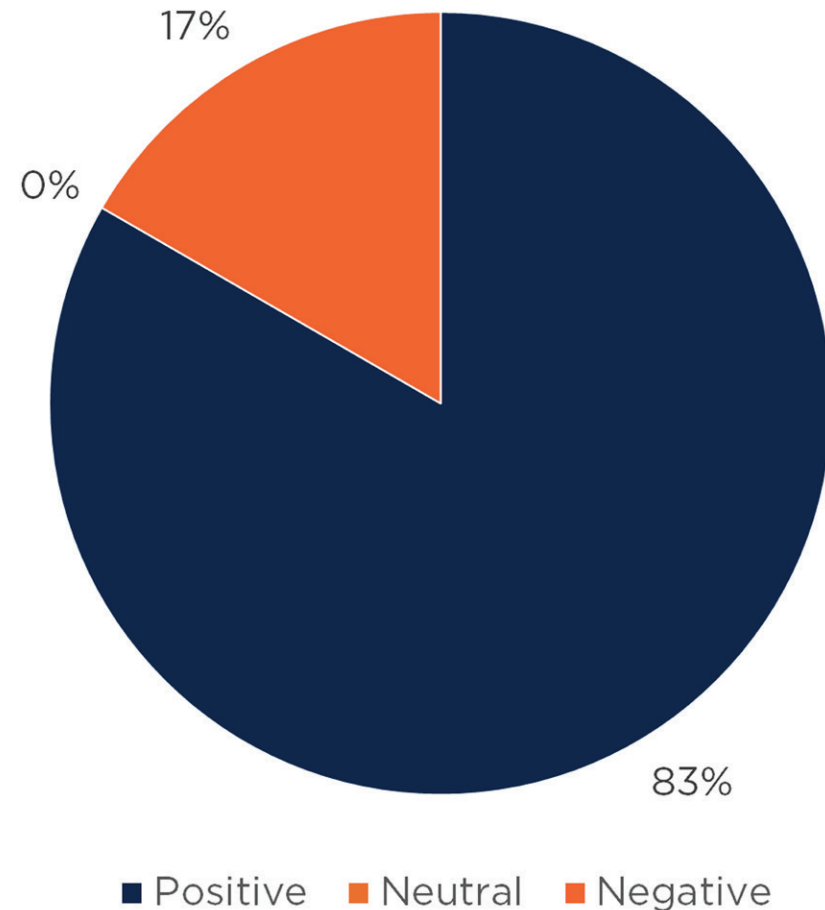
MY FAVORITE PLACE TO BE/LEARN...



MY SCHOOL MAKES ME FEEL...



SUPPORTING STUDENTS WITH DIFFERENTIATED LEARNING STYLES

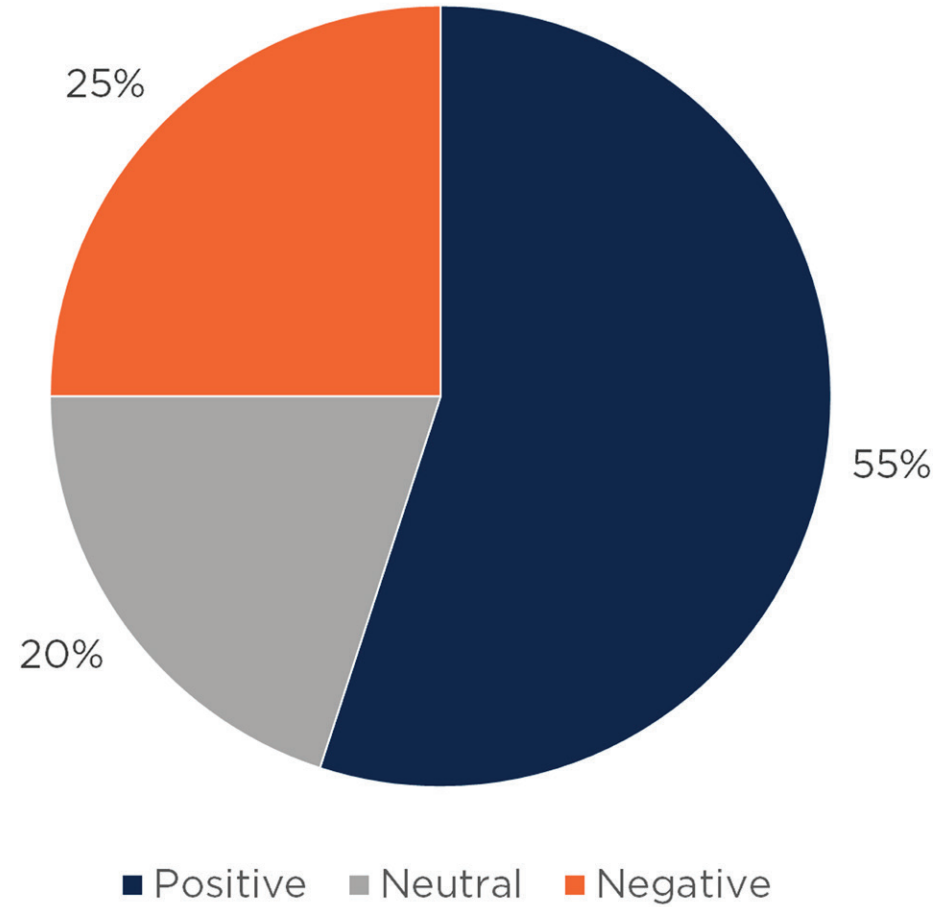


“There are many spaces small groups can move to in order to work; outside the classroom in the common space, Think Space, corner in classroom.... There is a ton of white board space. I love that we can write on almost any wall surface and the windows.”

“We need more smaller rooms/offices for individual testing.”



EXPERIENCE WITH TRANSPARENCY

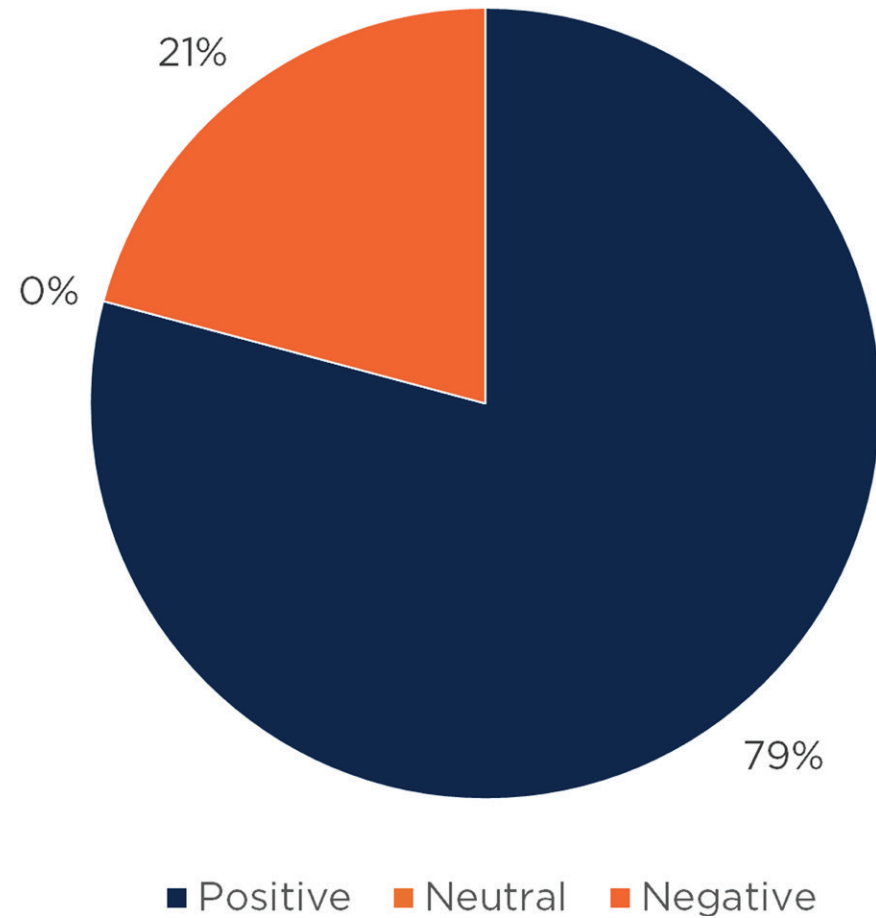


“I love it. It’s so nice to be able to see my teammates and visually check in if they need help. Or for coaches to be able to walk by and see if we need assistance it doesn’t feel like its distracting for my kids.”

“Very difficult for students to be hidden if necessary.”



LOOK AND FEEL OF SCHOOL

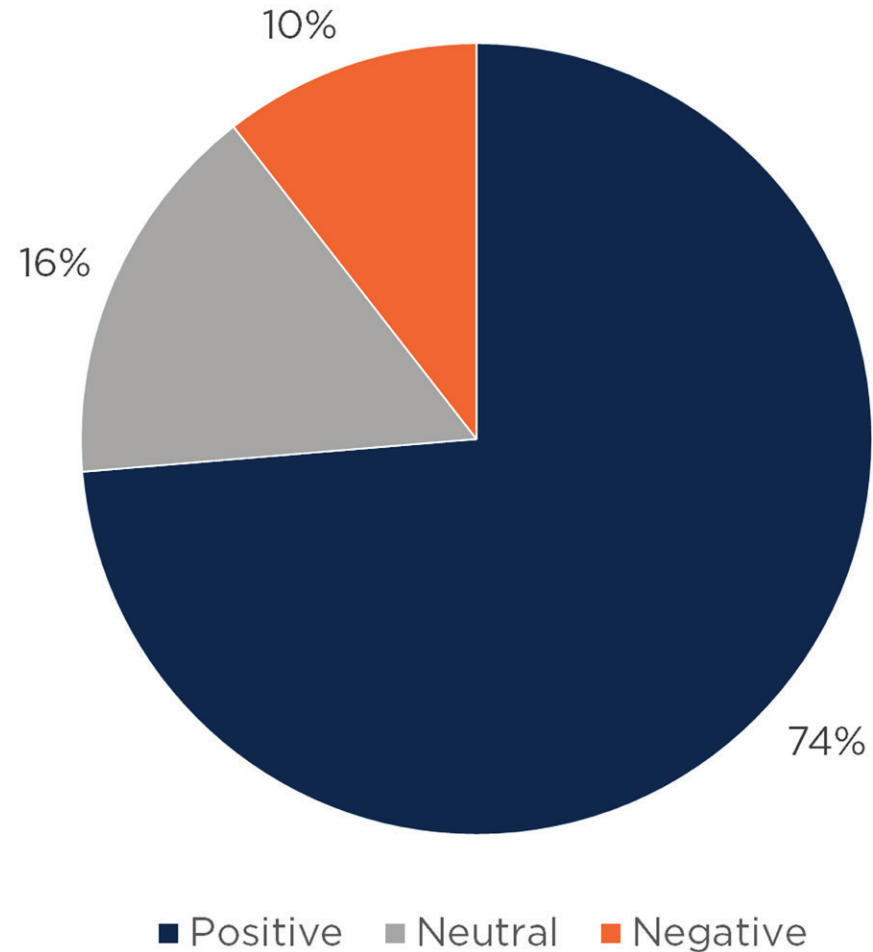


“I LOVE the natural lighting! I also like how the design incorporated elements of the local ecosystem—plants, animals, mountains.”

“The thing I don’t love is the color of our pod. We have the red and orange and when I walk into the pods with blue and purple it seems much more calm.”



SUPPORT OF TEACHER COLLABORATION

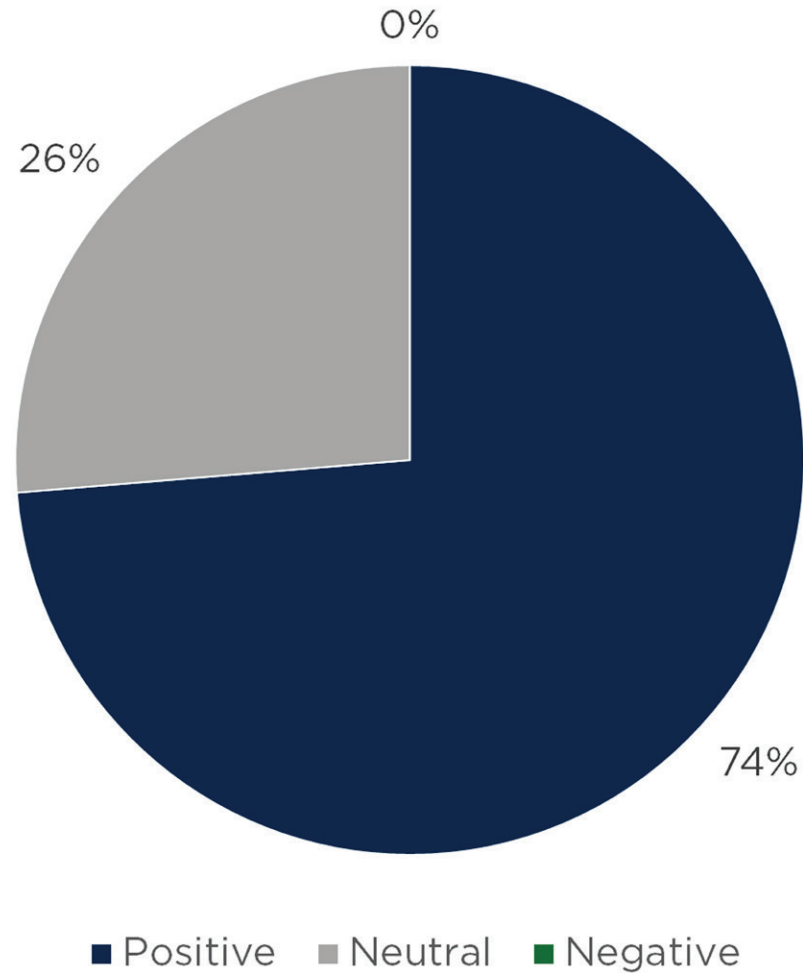


“The collaboration spaces make meeting and discussion as grade levels extremely smooth. I feel it really supports the time we share as a team.”

“It does fine. I wish I had my own space sometimes. I don’t have anywhere I can go to cry alone where people won’t see me after a really hard day.”



INCLUSION AND WELCOMENESS

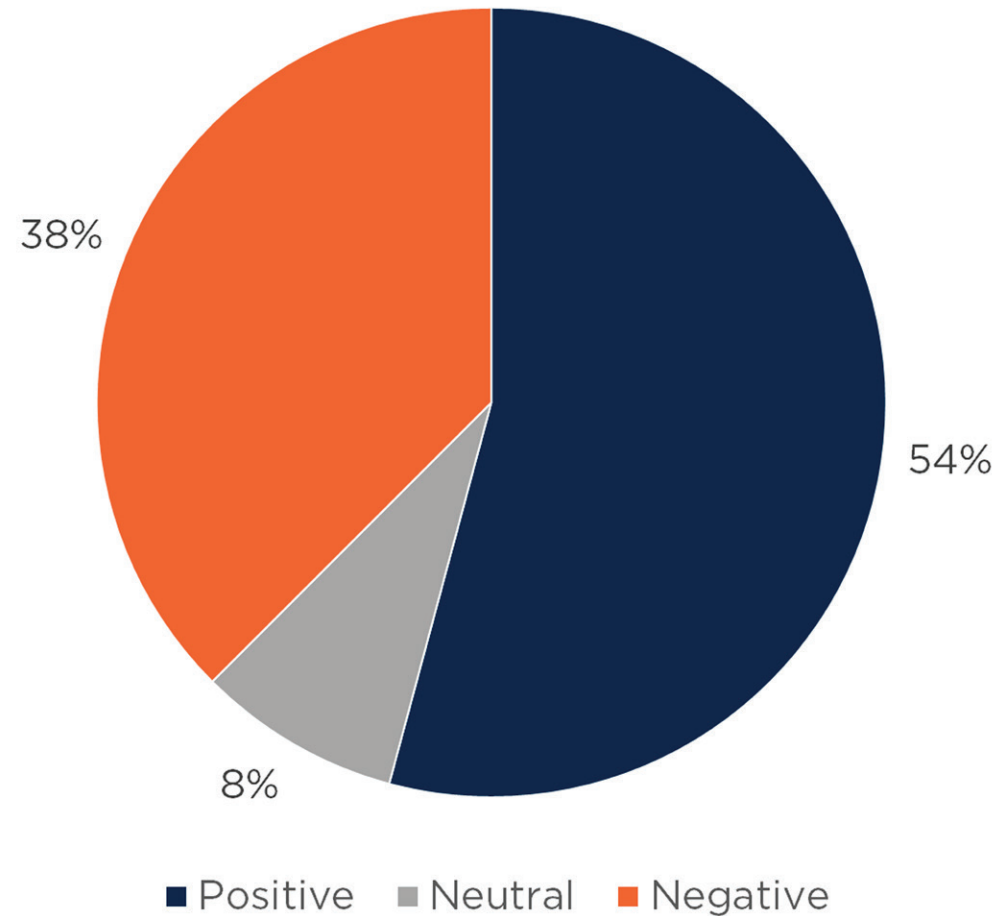


“I feel the new school promotes inclusion because of how inviting each pod is. The transparency of being able to see what everyone is doing makes it feel as though we are all together instead of secluded to one classroom.... All students in each grade are able to see each other throughout the day, which promotes learning and friendships.”

“It has promoted inclusion and a sense of welcome with space to host families and presentations on the learning stairs.”



SAFETY AND SECURITY



“Overall I feel that our school’s promotion of safety and security is quite high. The locking doors at the entrance to the pods lock well and do a good job keeping people out.”

“The biggest concern I have and have heard others share is that of the glass walls and windows. These make it challenging to secure and hide.”



“As a community member the aspects of the new school design that I was passionate about were function and the look of the new school within our community.... There were a lot of opportunities to come to open houses, a lot of opportunities to have everyone’s word listened to [The design of the new school] looks like we care. This shows that it is a place to learn, it is a place for students, it is a place for teachers, and that we care about the community.”





QUESTIONS

THANK YOU