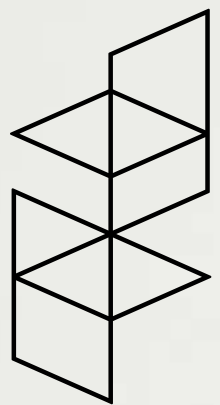


The Importance of Play

in the Built Environment



LSW
ARCHITECTS

VANCOUVER
PUBLIC SCHOOLS
VPS

Years with LSW	Years of Experience
12	28



Riverwest Apartments

Esther Liu, AIA, LEED AP, NCARB
President | Principal-In-Charge

Registration: CO, MT, OR & WA

Email: esther@lsw-architects.com

Years with LSW	Years of Experience
7	7



Martin Luther King Jr. Elementary

Kyle Rogers, Kolbe Youth Specialist
Associate | Director of Design CoMission

Email: kyle@lsw-architects.com





For nearly 70 years, we've pursued opportunities that support people, ideas that shape culture, and projects that add lasting value.

By the Numbers

- Total Employees: 39
- AIA Members: 18
- Licensed Architects: 16
- Principals: 5
- Associate Principals: 6
- Associates: 11

Certifications

- LEED™ Accredited Professionals
- LEED™ Green Associates
- BCA/ICOS Certified Professionals
- CSI/CDT Certified Professionals
- CPHC Certified Professionals
- NCIDQ Certified Professionals

Services

- Architecture
- Interior Design
- Comprehensive Planning
- Creative Services
- Public Engagement
- Economic Development

Market Sectors

- K-12 & Higher Education
- Healthcare & Wellness
- Multifamily & Mixed-Use Housing
- Affordable & Low-Income Housing
- Office & Adaptive Reuse
- Community & Recreation

Our Core Values

- Gratitude
- Growth Mind-Set
- Wisdom
- Impact
- People & Projects
- Creating Value
- Results



Who We Are



The Importance of Play



Our Work



Our Core Beliefs

- ***Life is a Gift***
- ***Provide Value In Every Relationship***
- ***Design Matters***
- ***Operate In Unique Ability***
- ***Created to Be Creative***
- ***Love and Serve***



opportunities over obstacles *UNDERSTAND HUMAN INTERACTION*
rethink the conventional CRAFT DIVERSITY **STRONG STORY**
RESPECT THE NATURAL ENVIRONMENT
DO THE HARD WORK *DESIGN FOR EVERYONE* BE INSPIRED *TIMELESS*
MEET CONSTRAINTS WITHOUT COMPROMISE *do only good* *expand the context*
DESIGN FOR PEOPLE
follow your curiosity leave a legacy *EXPLORATION* **INCLUSION**
SIMPLIFY FOR CLARITY *UNDERSTAND IMPACT OF DECISIONS*
better the earth *EMBRACE THE PROCESS*
EQUITY beauty *DIG DEEP* creativity through collaboration
RAISE THE BAR **ELEVATE HUMAN EXPERIENCE**



The Third Teacher

- During play, students engage with their environment and learn through curiosity, exploration, discovery, creation, and ultimately from their 3 teachers.
- The first and second “teachers” are adults and other peers, the environment around us is our “third teacher.”
- **1. Adults (Teachers / Parents)**
- **2. Peers**
- **3. Environment** → **Learning happens everywhere.**

The Third Teacher

79 Ways You Can Use Design to Transform Teaching & Learning

A Collaborative Project:
OWP/P Architects + VS Furniture + Bruce Mau Design



Why is 'play' important?

- Play is the universal language of childhood — an experience of joy, pleasure and fulfillment in a motivational activity and a key to a shared human experience.
- For most, learning to share in the joy of laughter begins during childhood through game play.
- Laughing has been scientifically proven to help us heal, learn, and get closer to others .



Play Promotes...

- *Connectedness*
- *Problem-Solving*
- *Creativity*
- *Life Lessons*



Play Also Promotes...

- *Healthy Stress Relief*
- *Community Empowerment*
- *Wonder & Inquiry*



The Importance of Play



Playing games teaches us a lot about life at a time when lessons need to stick. Things like compromise, sharing, how to win, how to lose, how to begin again from zero. How to resolve conflict respectfully. It's all there, packed into a game of freeze tag or Legos.



Vancouver Innovation, Technology, & Arts (VITA) Elementary School

The Importance of Play





**Vancouver Public Schools
Vancouver, WA**

**63,454 SF (5,895 m²)
420 Students**

**GC/CM Delivery
\$32M GMP (USD)**

**Completed 2022
18 Month Duration**

**Type IIIA Construction
PT Concrete & Lt Steel**









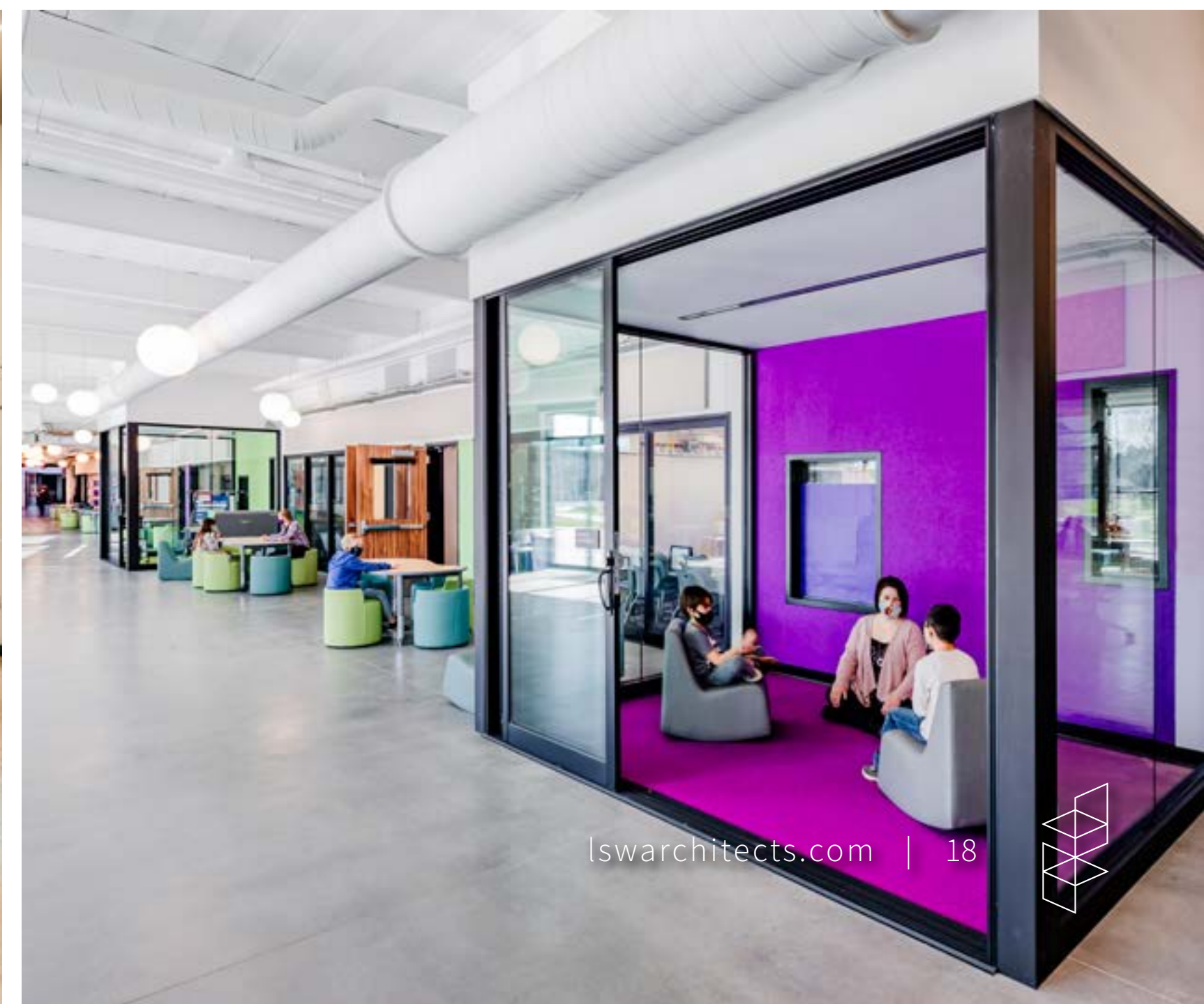


District Leadership at Vancouver Public Schools



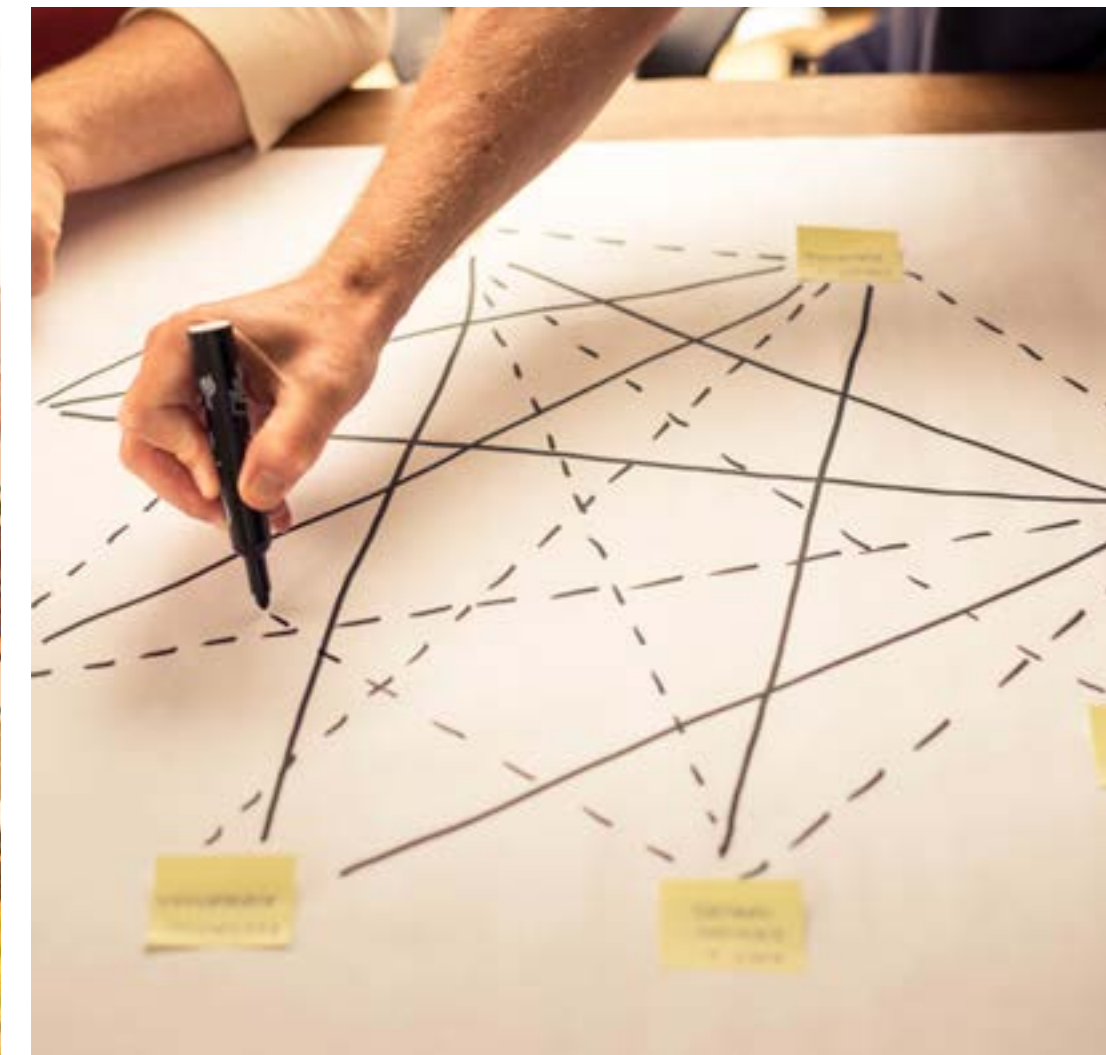
The Importance of Play

- **District Enrollment:** 22,000 students
- **Area Coverage:** Approx. 150 sq km
- **Elementary Schools:** 23
- **Middle Schools:** 6
- **High Schools:** 5
- **Number of Teachers:** 1,400
- **Avg. Student-Teacher Ratio:** 17:1



Building a Unique Program

- VPS envisioned the opportunity to fully embrace and integrate **Project-Based Learning (PBL)** / Hands-On Learning into the programming, planning and design of VITA.
- We invited VPS to closely examine what “activities” they would be trying to do in a **PBL-driven** school, and how they might interrelate, rather than being confined or constrained by spaces that were not ideal.



PBL Questions

- *What activities could be shared?*
- *How would the experience differ from a traditional school?*
- *How might the activities relate to potential outside partners?*
- *How would the environment best support the activities that would best support a PBL curriculum?*

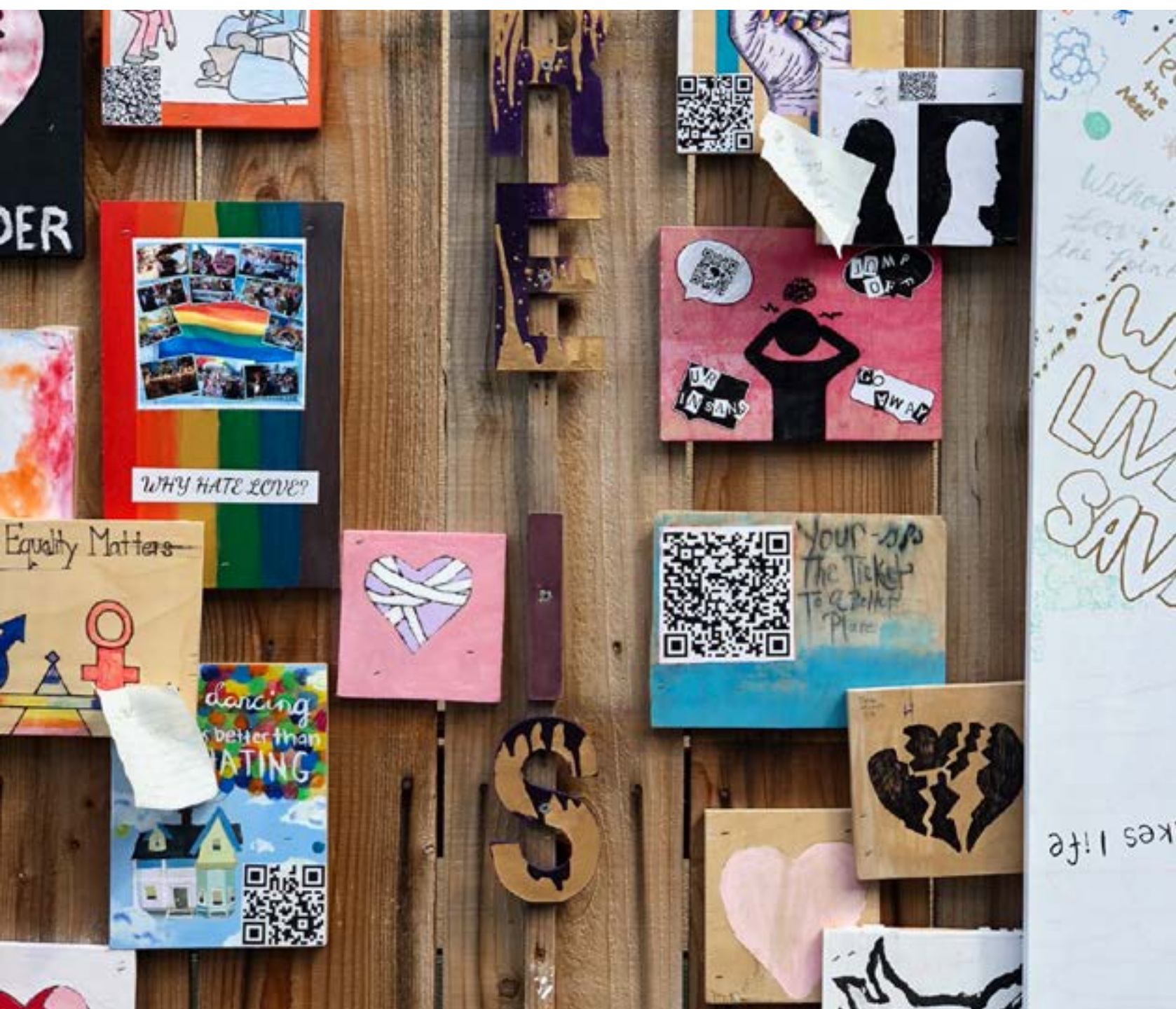
The Importance of Play



Trip to PBL School in 2018

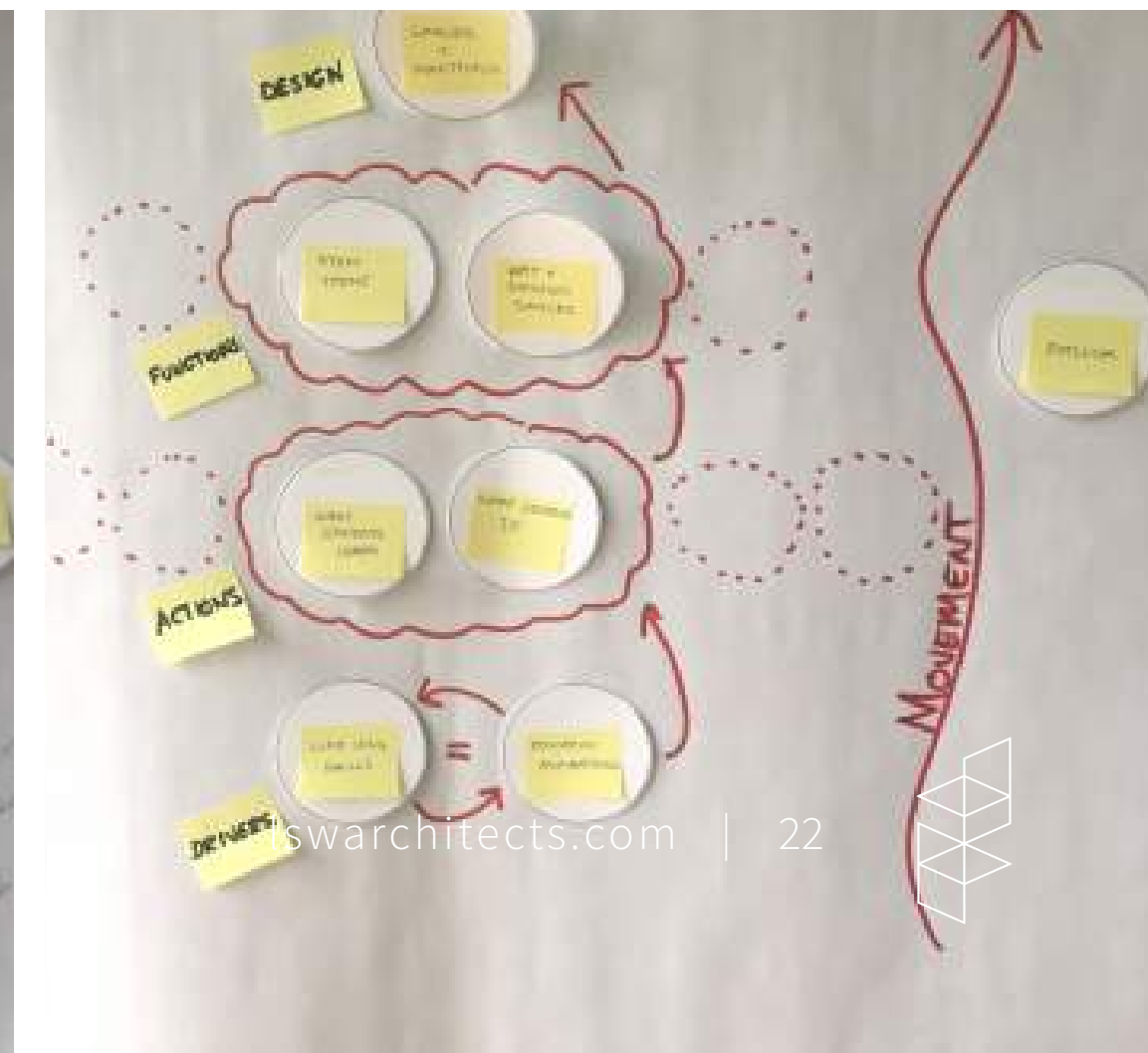
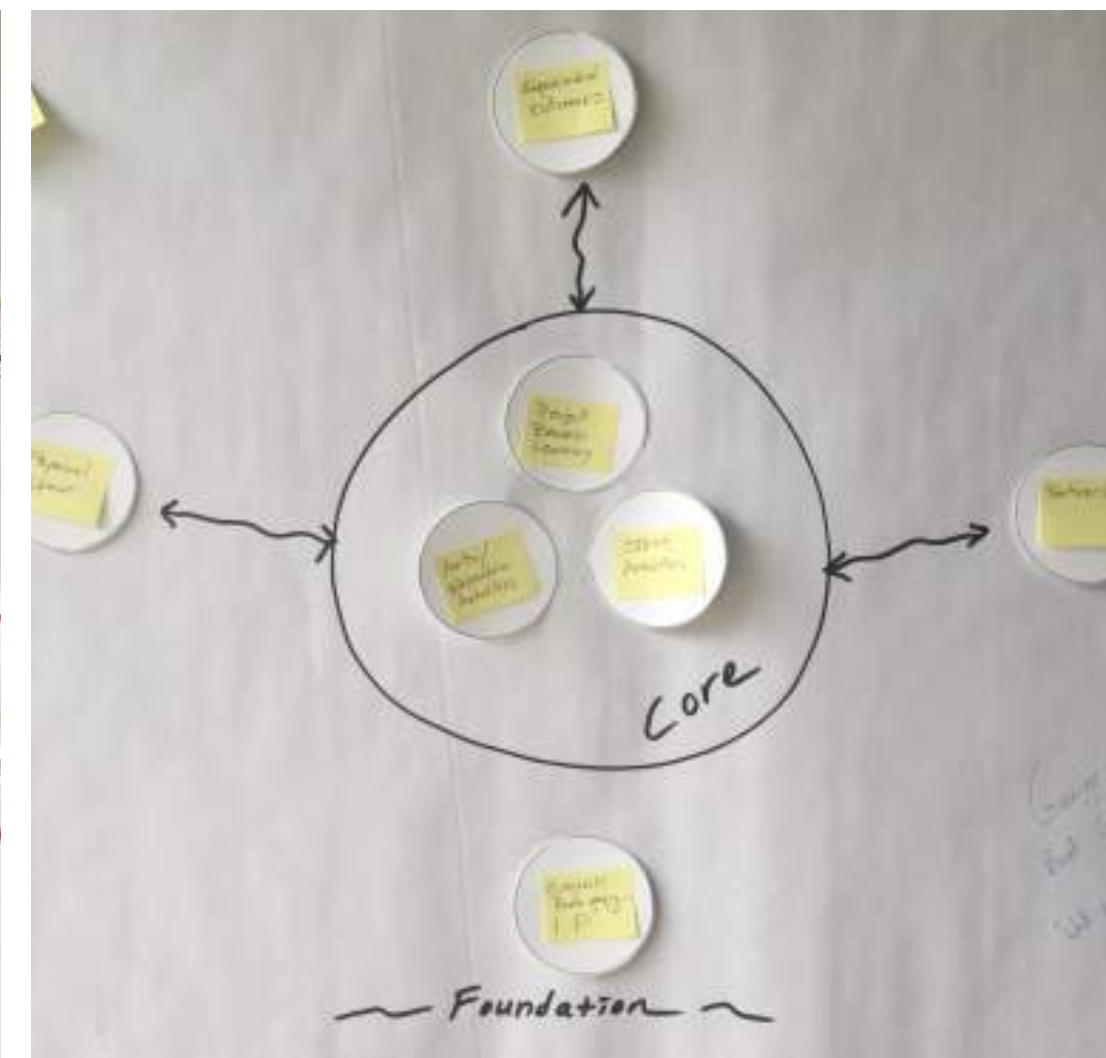
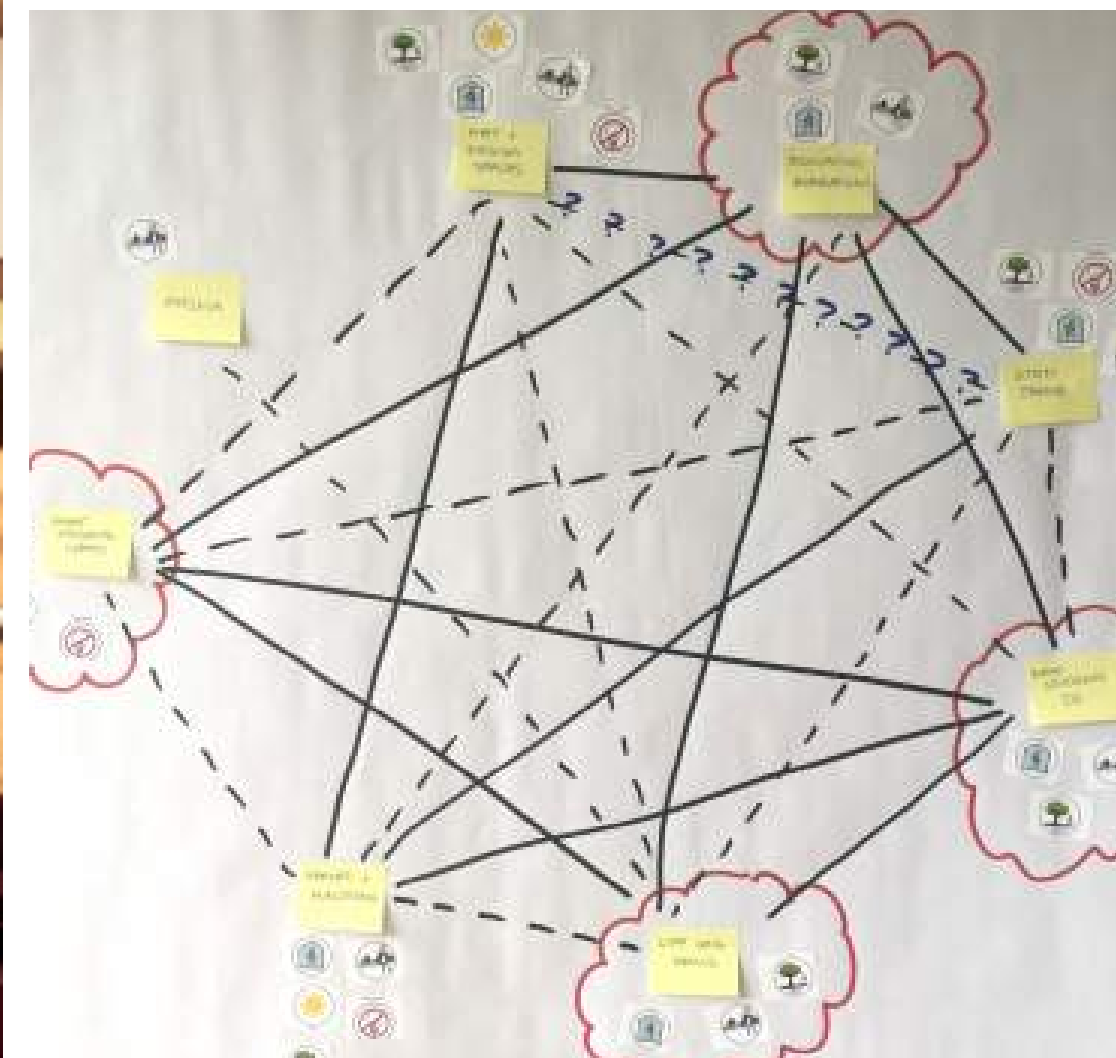


The Importance of Play



A Concept Designed for Curious, Creative Thinkers

- The idea of VITA was conceptualized in response to a period of significant development and growth in downtown Vancouver, WA.
- VPS proposed a school that would empower students through Project-Based Learning (PBL), which inspires collaboration, problem-solving and creativity.



Stakeholder Discovery Meetings



The Importance of Play



District Vision

- *We are filled with the joy of learning.*
- *We learn from our successes, but also recognize learning from failure.*
- *We are creating a fresh start and a new model for education in Vancouver and beyond.*
- *We are not your typical elementary school.*
- *We are an incubator to influence practices.*
- *We are an innovative place for teachers, as well as students.*
- *We are a place to be amazed and inspired!*



School Values

- *Built upon a sound foundation, research and pedagogy is a driver.*
- *We are a whole community of learners.*
- *We hold outward-facing transparency as an important ingredient to our successes.*
- *We instill our learners and our community with inquiry, wonder, and creativity.*



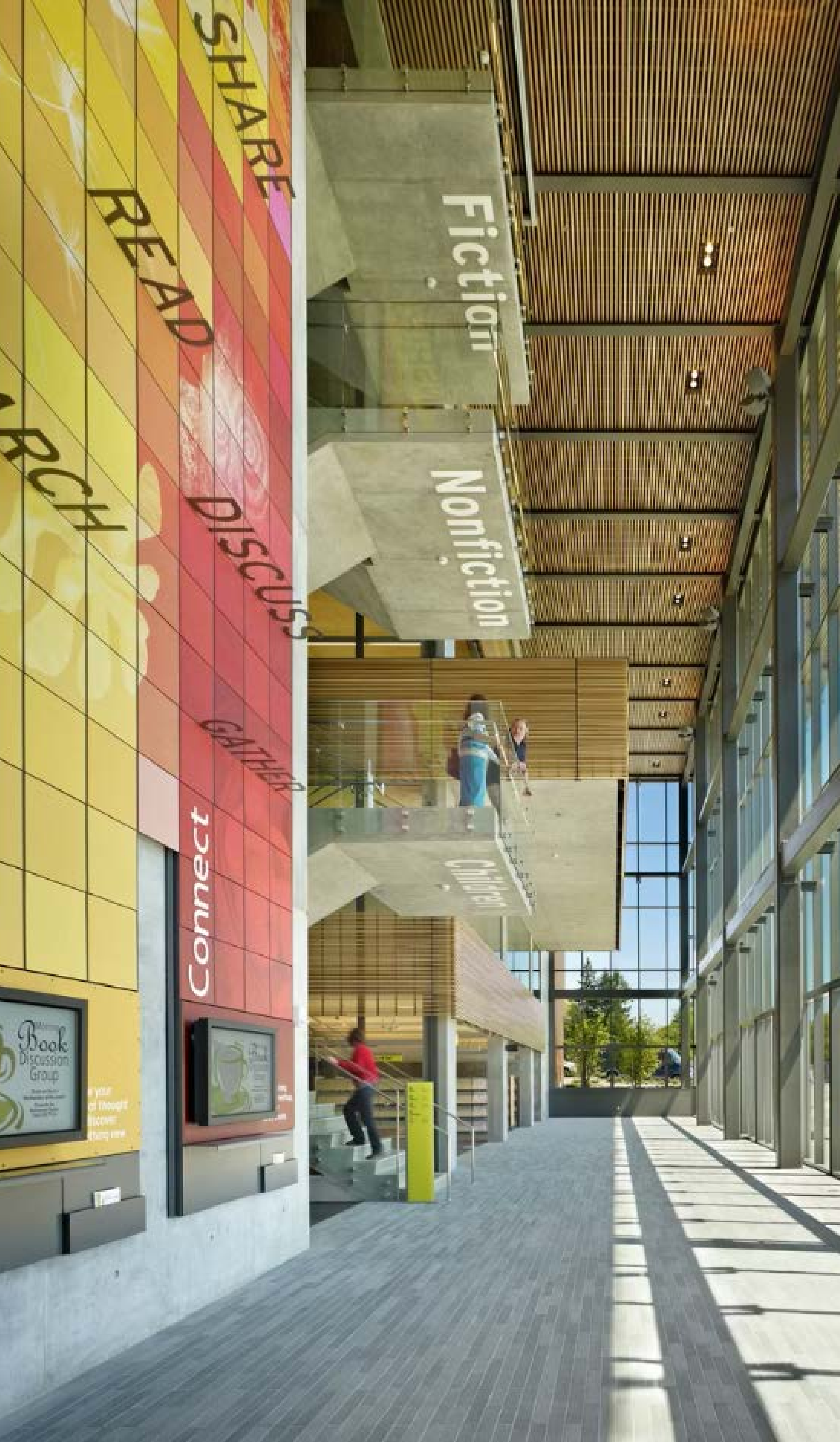
Culture & Habits

- *We are a community of equity and excellence.*
- *We lead by invention — we do not hesitate to think in a new way.*
- *We are open to drive change.*
- *Our culture values inquiry, wonder, and creativity as a daily ingredient to success.*
- *As a community, we instill joy!*

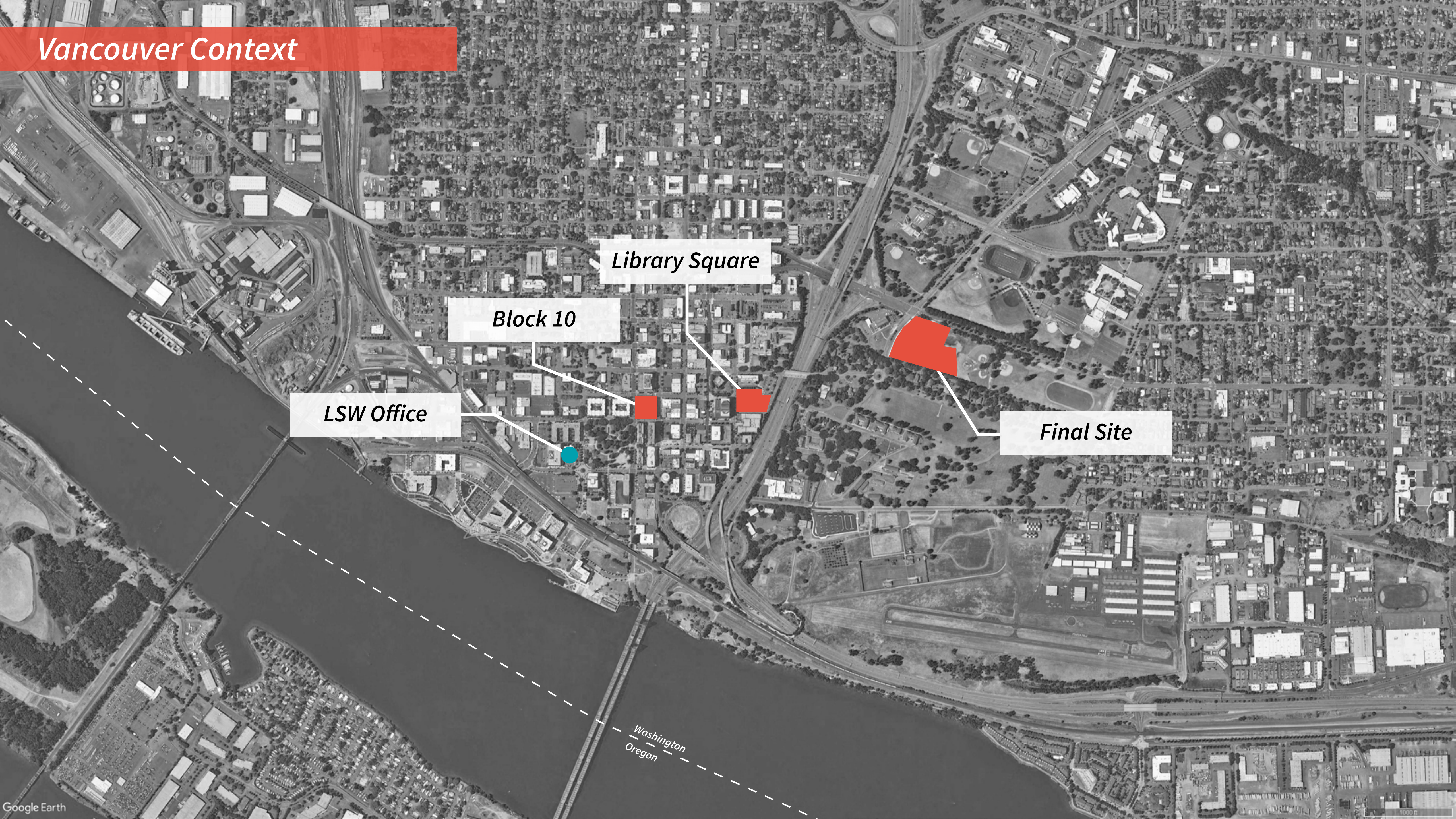


Developing a Master Plan

- In exploring the desired vision, values and culture for the school, many ideas took form of how the school could most effectively “reach out” into the growing Vancouver community.
- By locating downtown, the project became an opportunity to create spaces and experiences not only for learning, but also as a means to draw in the community and create a place for:
 - *Civic Events*
 - *Business Enterprises*
 - *Visual & Performing Arts*
 - *Community Connections*



Vancouver Context



Library Square

Block 10

LSW Office

Final Site

Washington
Oregon

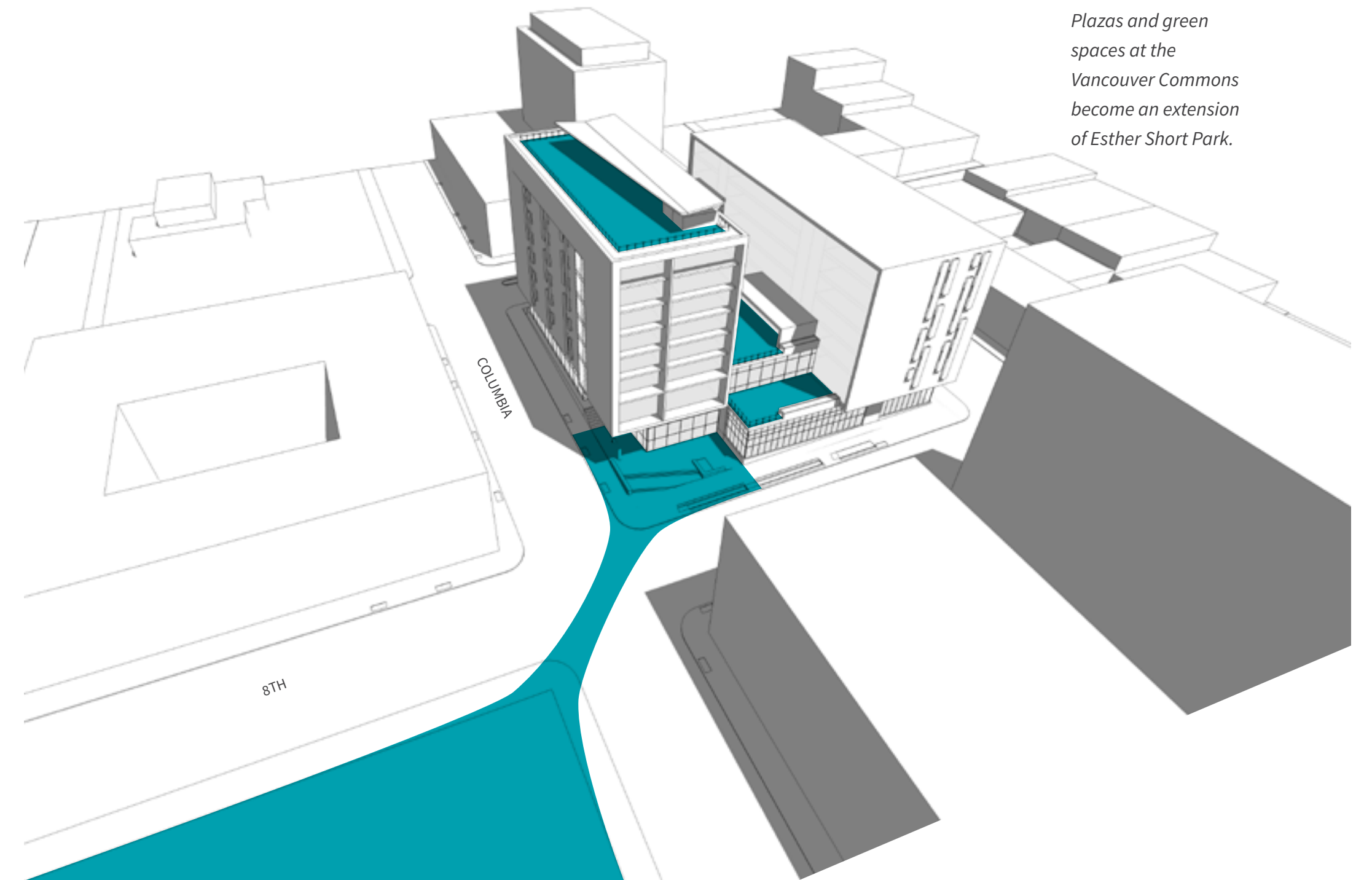
Downtown School Options



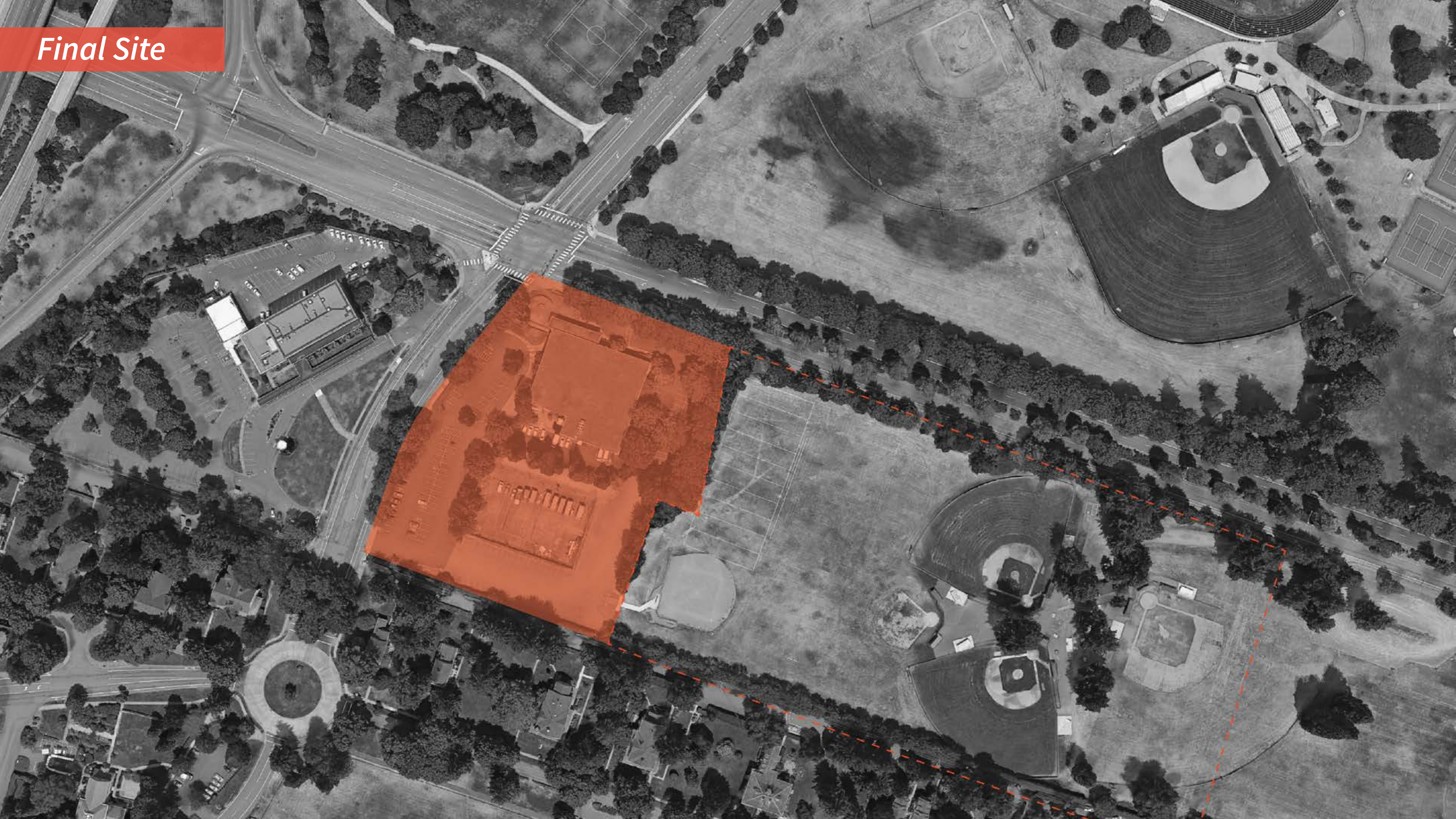
North/South Section through Building - View to the East

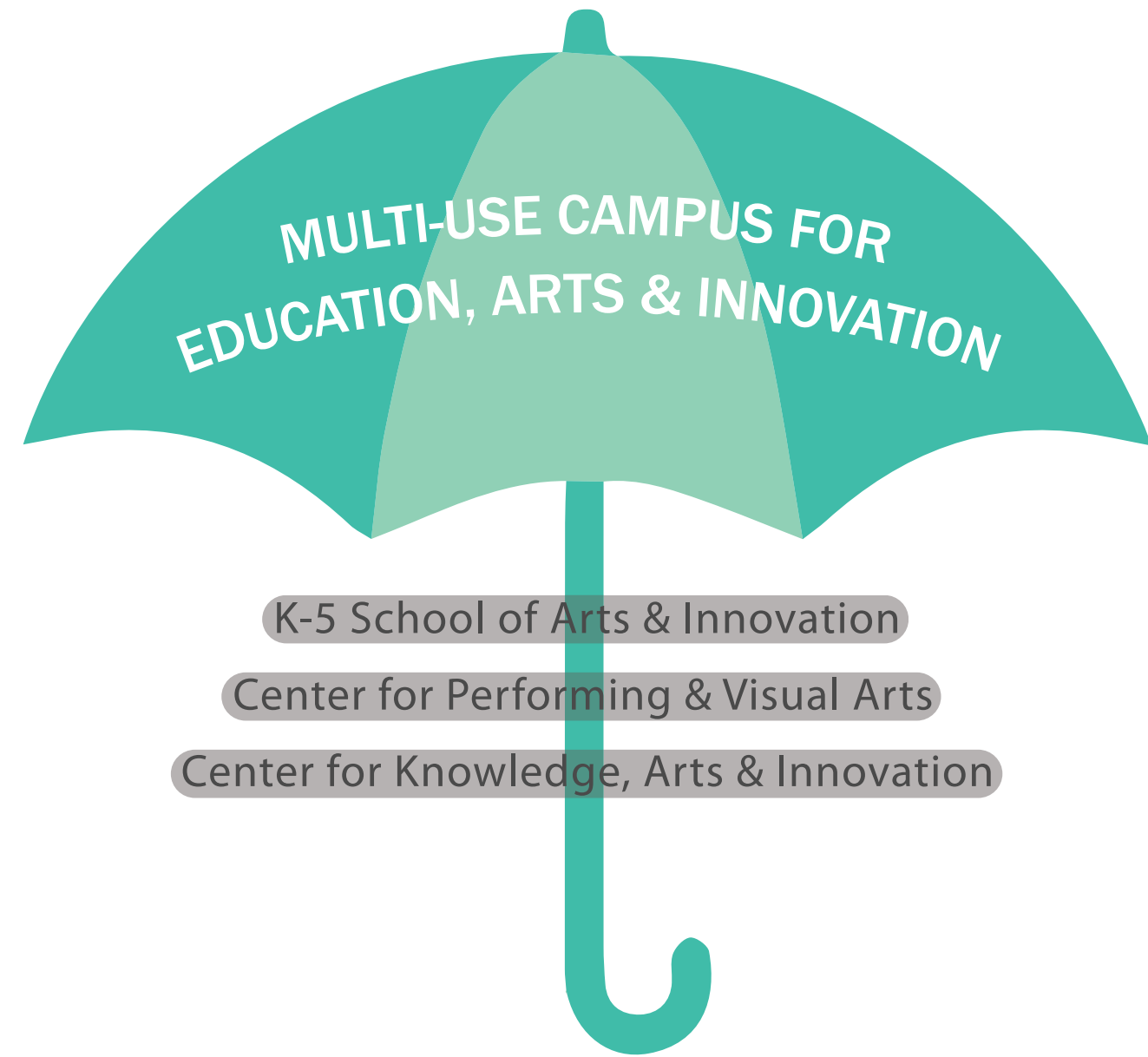
The Importance of Play

Aerial view from Esther Short Park.
Plazas and green spaces at the Vancouver Commons become an extension of Esther Short Park.

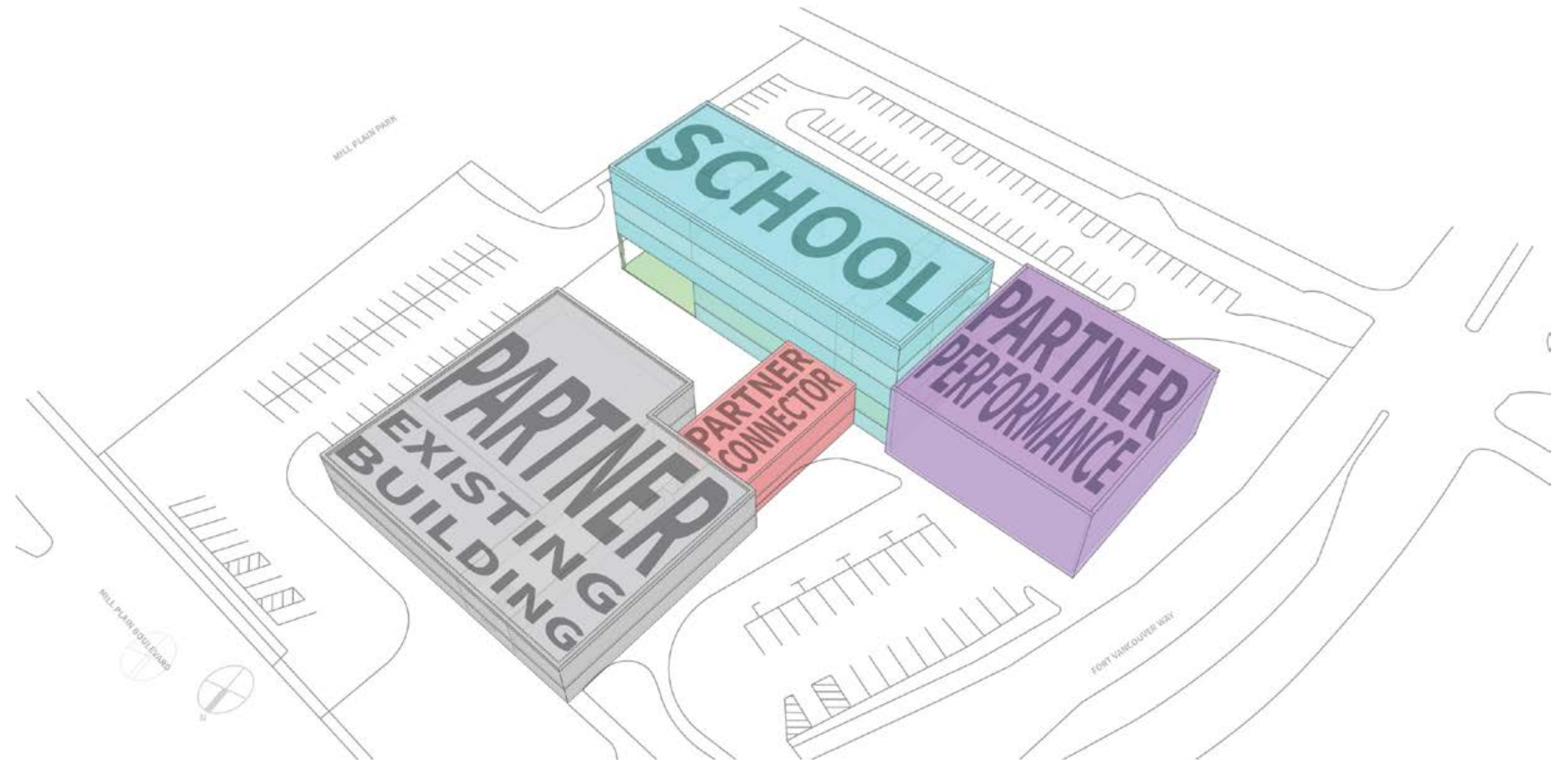


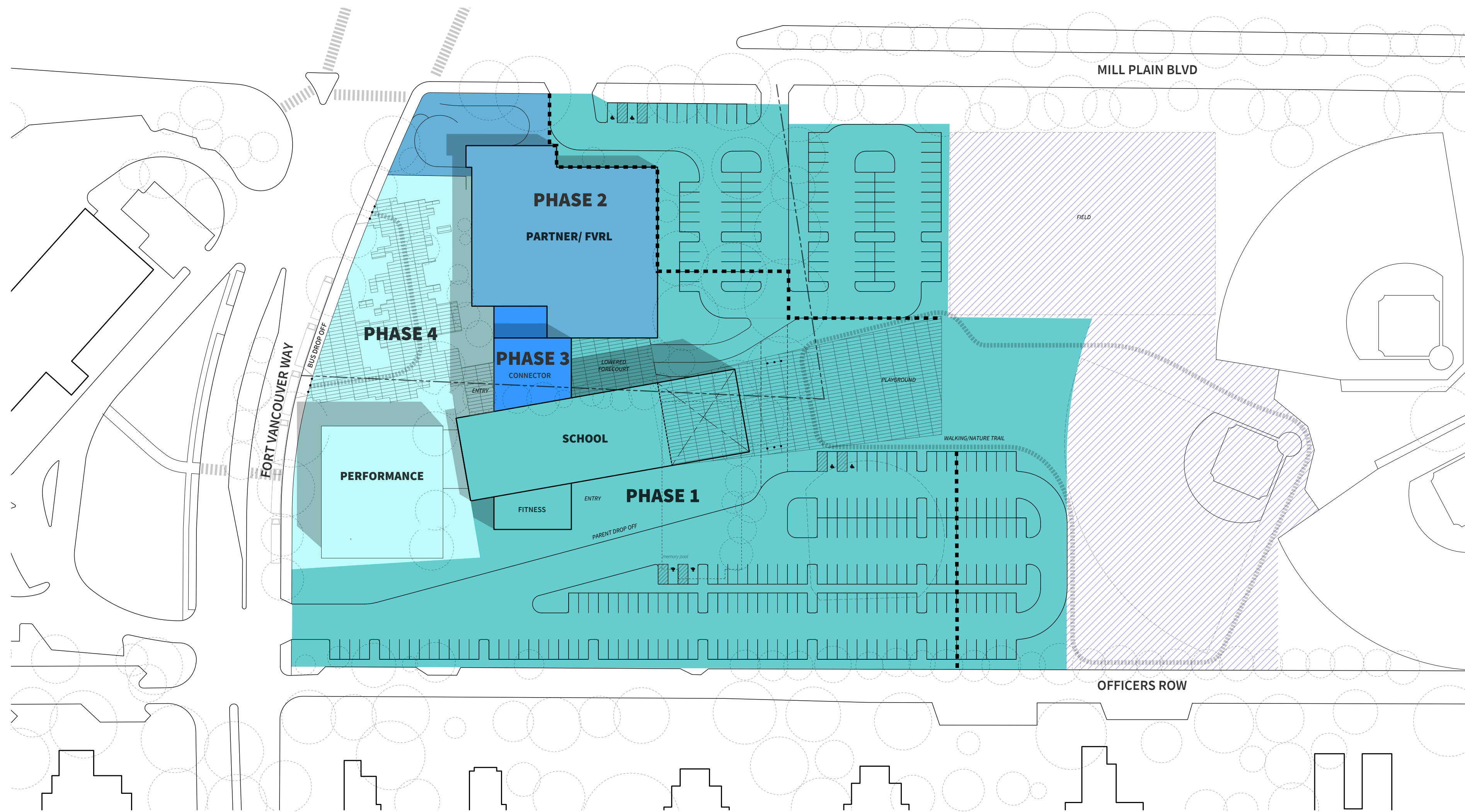
Final Site



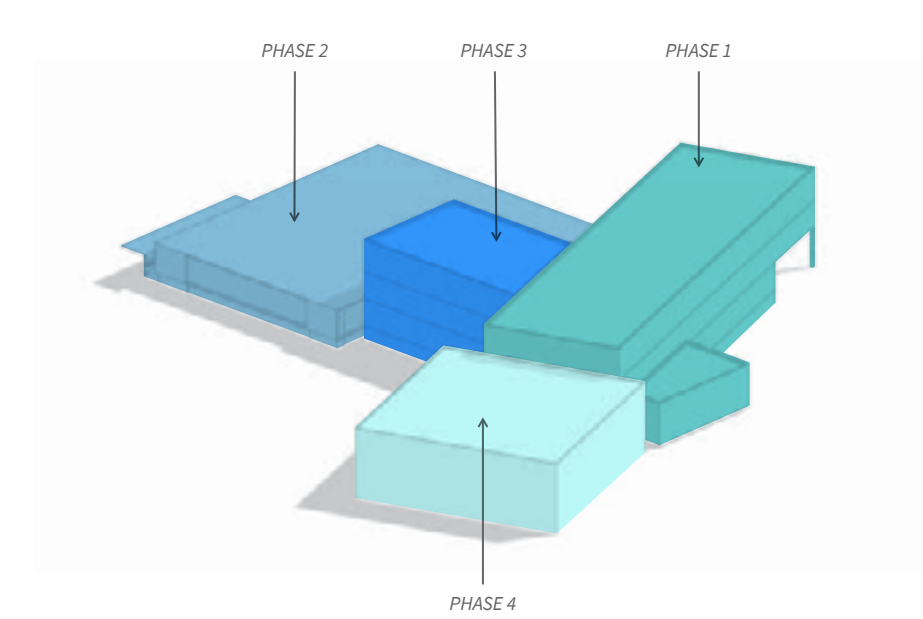


- K-5 School of Arts & Innovation
- Center for Performing & Visual Arts
- Center for Knowledge, Arts & Innovation






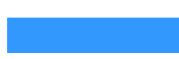



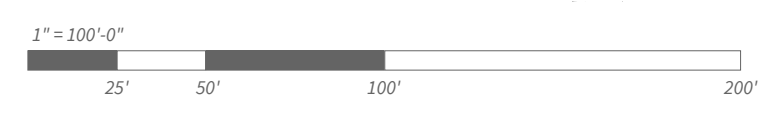
BUILDING AXON



280 Parking Spots Shown

LEGEND

-  EXISTING TREES
-  PHASE 1
-  PHASE 2
-  PHASE 3
-  PHASE 4





- Housing
- Office & Commercial
- Social & Civic
- Warehouse & Distribution
- Parking
- Proposed Development Areas
- Community Partner Locations
- Parks / Open Space
- Walking Path
- Site





Fort Vancouver National Historical Site

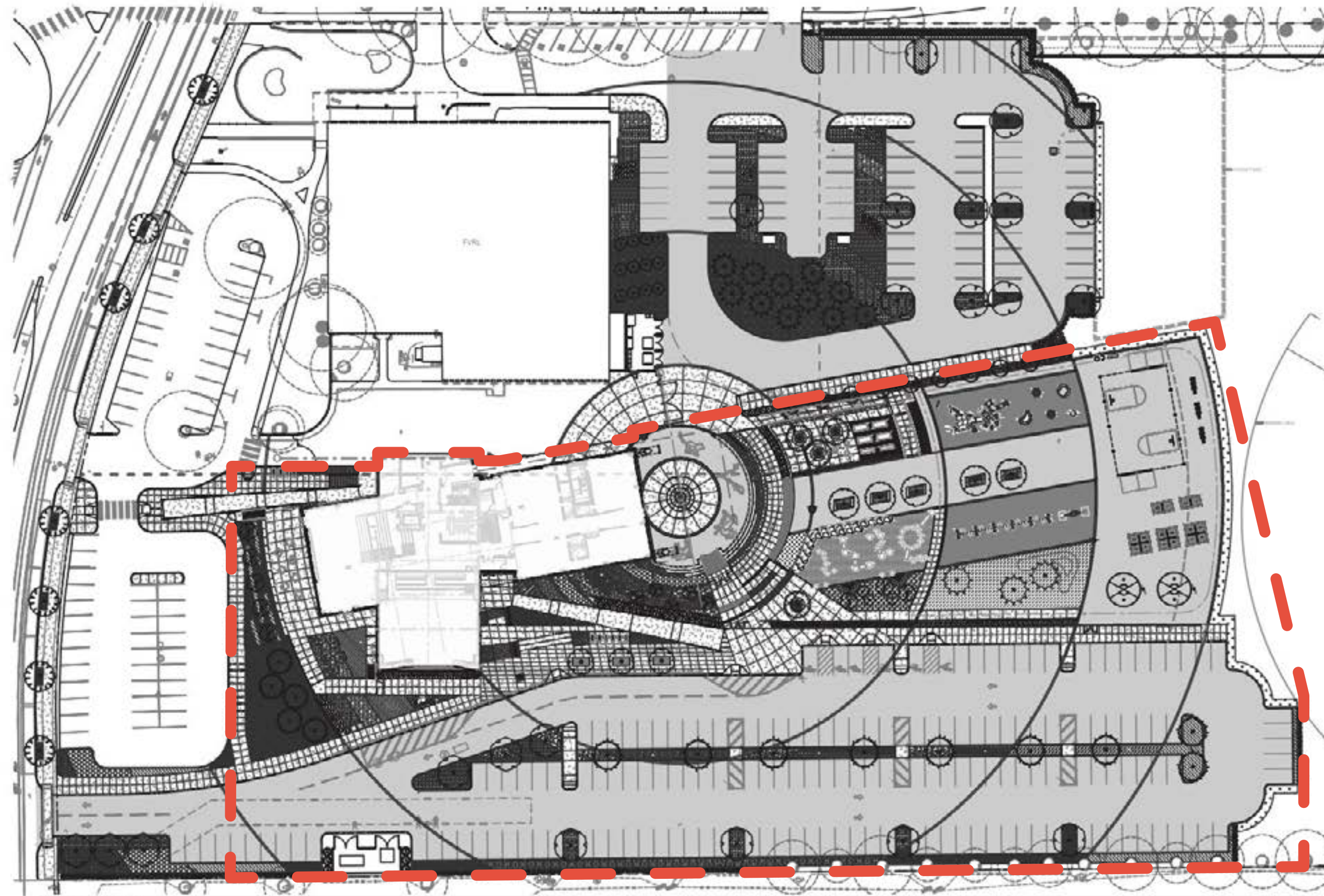


VITA's Community Partners

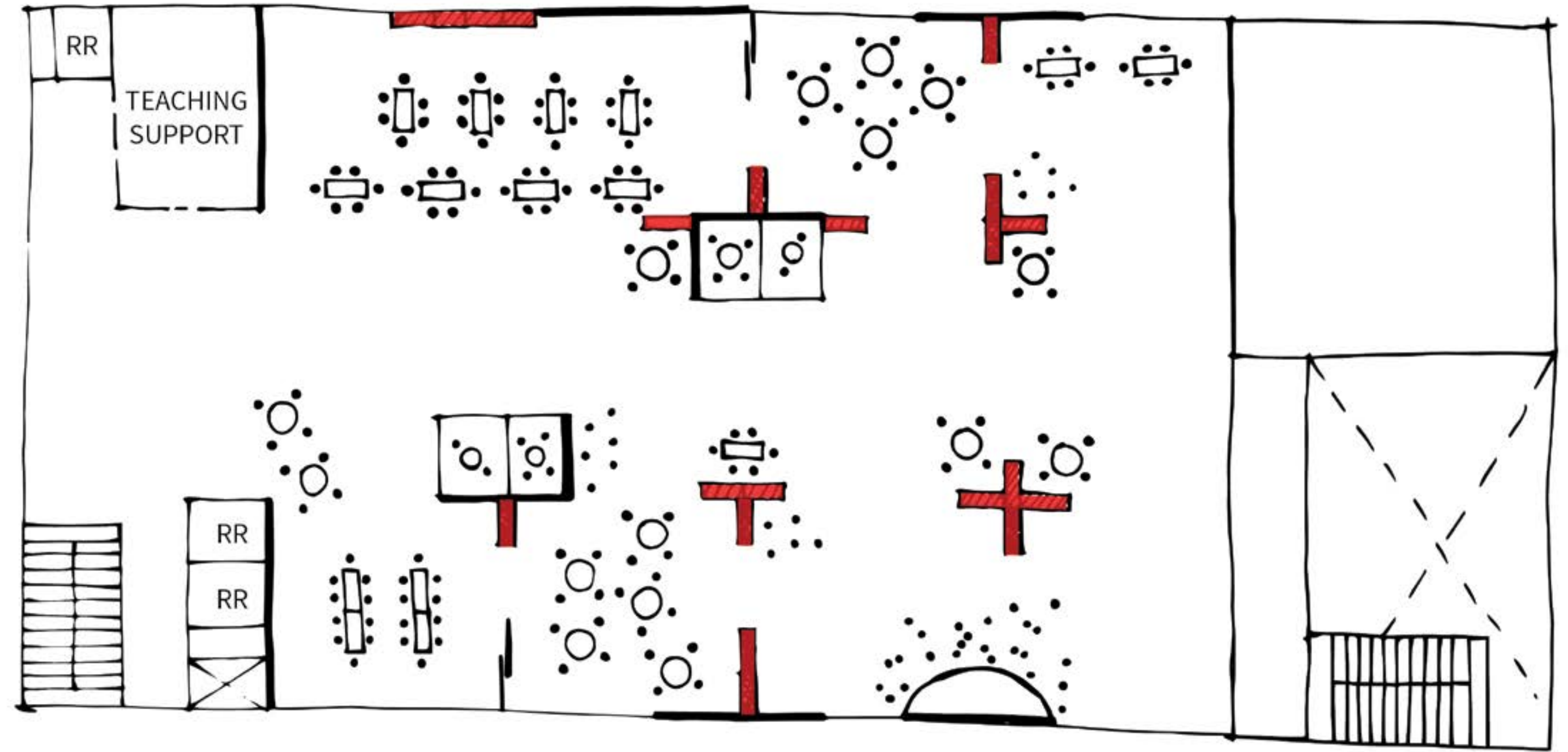


The Importance of Play







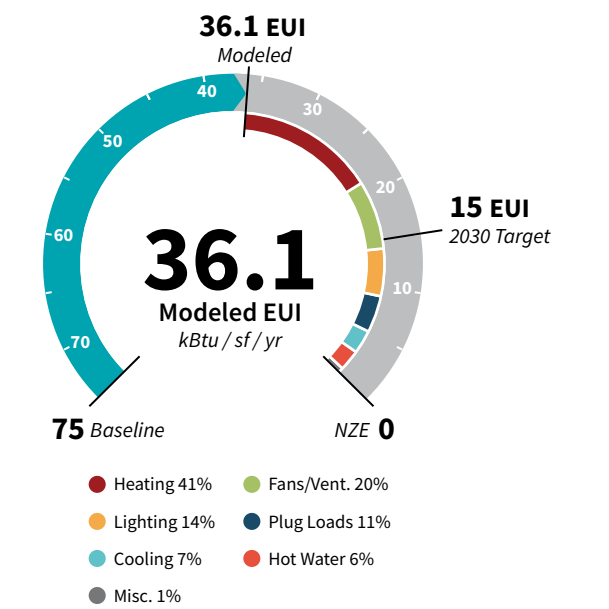
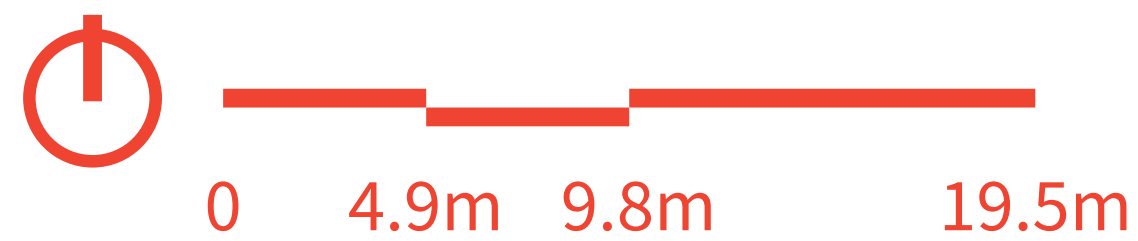


- 4'x 2' SHELVES (42" High)
- 3'x 2' SHELVES (7' High)
- 6 CHILDREN TABLE
- 4 CHILDREN TABLE



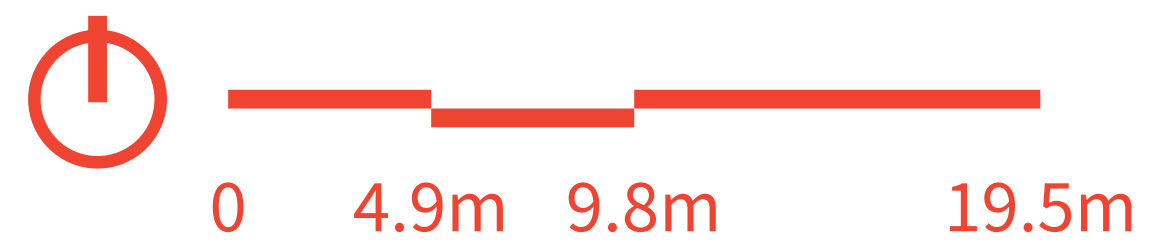
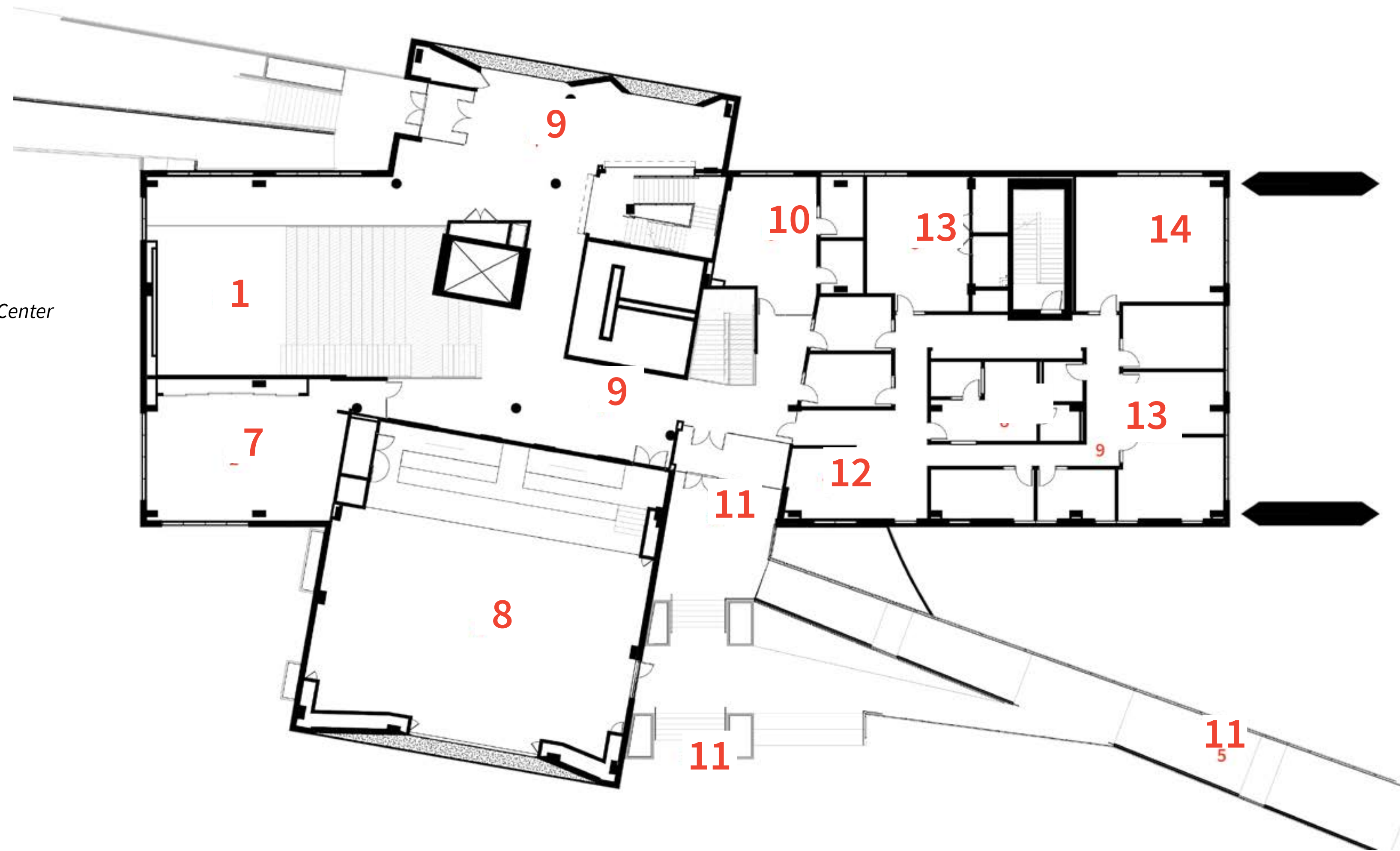
First Floor Plan

- 1 Commons / Dining
- 2 Kitchen
- 3 Service / Storage
- 4 Maker Storage
- 5 Learning Studios
- 6 Covered Play
- 7 Music Room
- 8 Fitness/ Movement
- 9 Display Space
- 10 Family / Community Resource Center
- 11 Main Entry
- 12 Reception
- 13 Administration
- 14 Staff Room
- 15 Learning Commons
- 16 Media Center
- 17 Collaboration
- 18 Office
- 19 Future Outdoor Learning

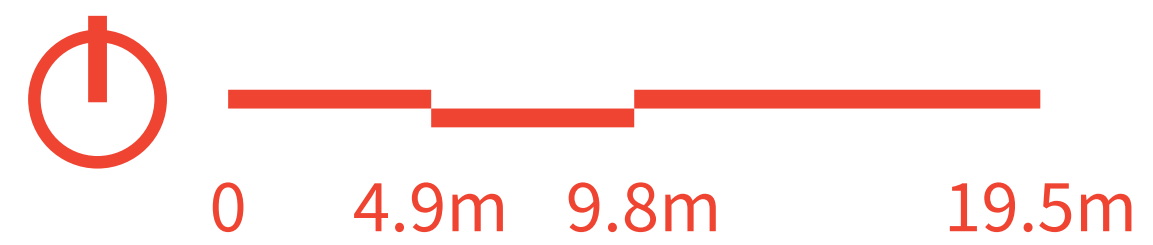


Second Floor Plan

- 1 Commons / Dining
- 2 Kitchen
- 3 Service / Storage
- 4 Maker Storage
- 5 Learning Studios
- 6 Covered Play
- 7 Music Room
- 8 Fitness/ Movement
- 9 Display Space
- 10 Family / Community Resource Center
- 11 Main Entry
- 12 Reception
- 13 Administration
- 14 Staff Room
- 15 Learning Commons
- 16 Media Center
- 17 Collaboration
- 18 Office
- 19 Future Outdoor Learning



- 1 Commons / Dining
- 2 Kitchen
- 3 Service / Storage
- 4 Maker Storage
- 5 Learning Studios
- 6 Covered Play
- 7 Music Room
- 8 Fitness/ Movement
- 9 Display Space
- 10 Family / Community Resource Center
- 11 Main Entry
- 12 Reception
- 13 Administration
- 14 Staff Room
- 15 Learning Commons
- 16 Media Center
- 17 Collaboration
- 18 Office
- 19 Future Outdoor Learning



“Learning happens everywhere!”

The Importance of Play





Openness decreases boundaries and promotes exploration — not compartmentalized like a traditional school.





- Sliding partitions (3 panels each)
- Independently telescoping
- Varied partition surfaces for writing and pin-up space



- Variety of scale in spaces for small and large groups
- Finish selection driven by PBL activities (dirty vs clean)
- Social Emotional Learning (SEL) nooks









Discovery Nodes



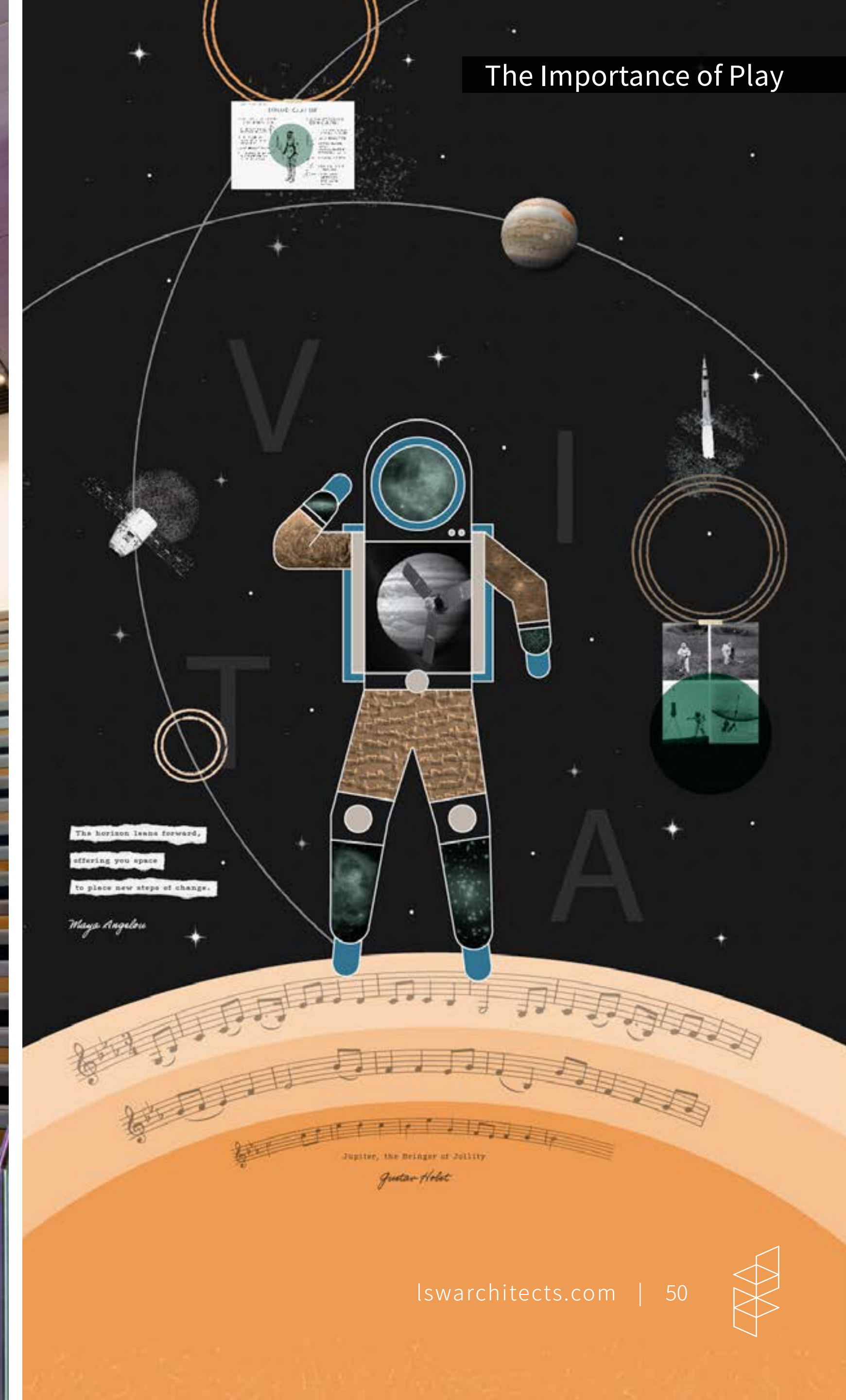
The Importance of Play



Discovery Node Murals



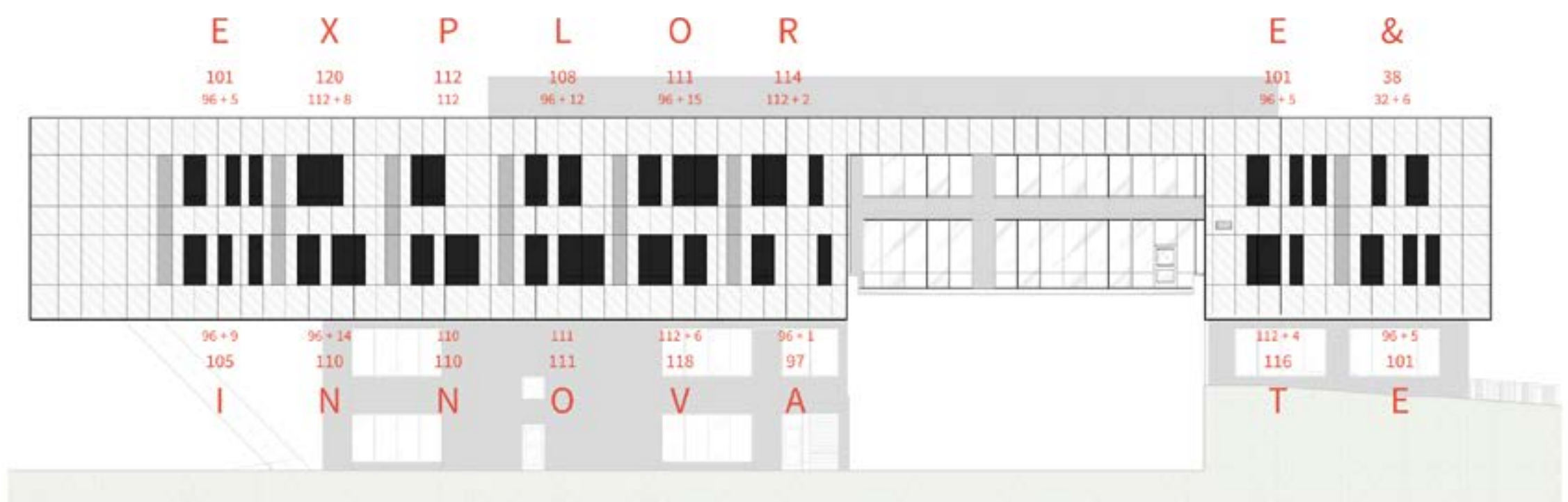
The Importance of Play



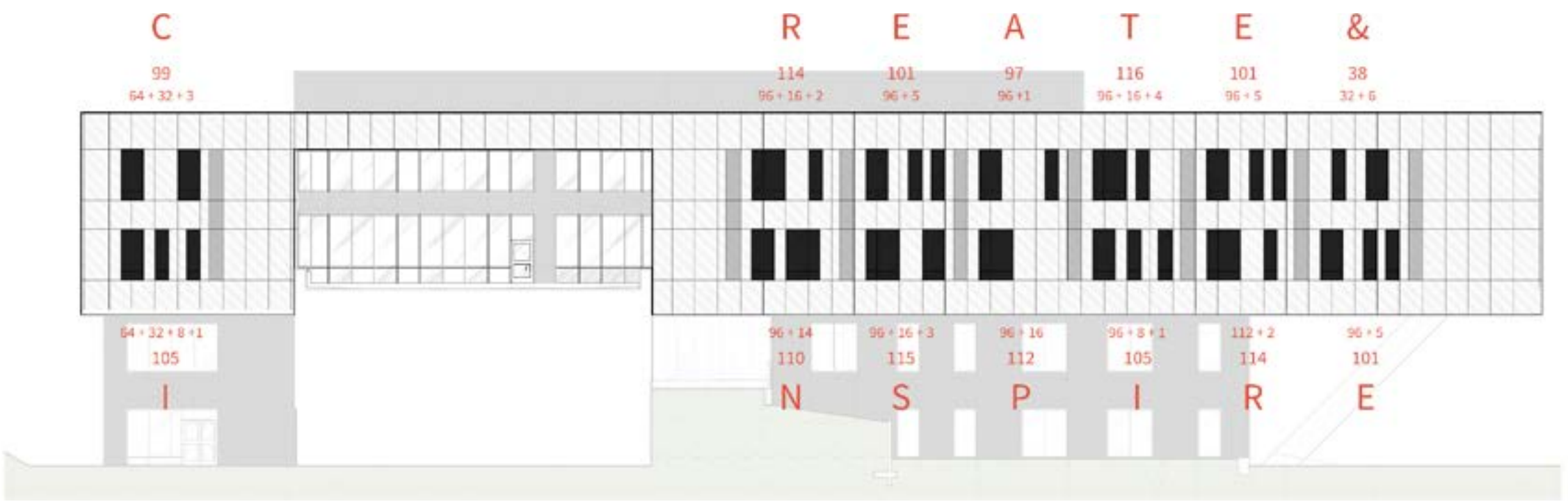
Discovery Node Murals



Binary Codes on Windows



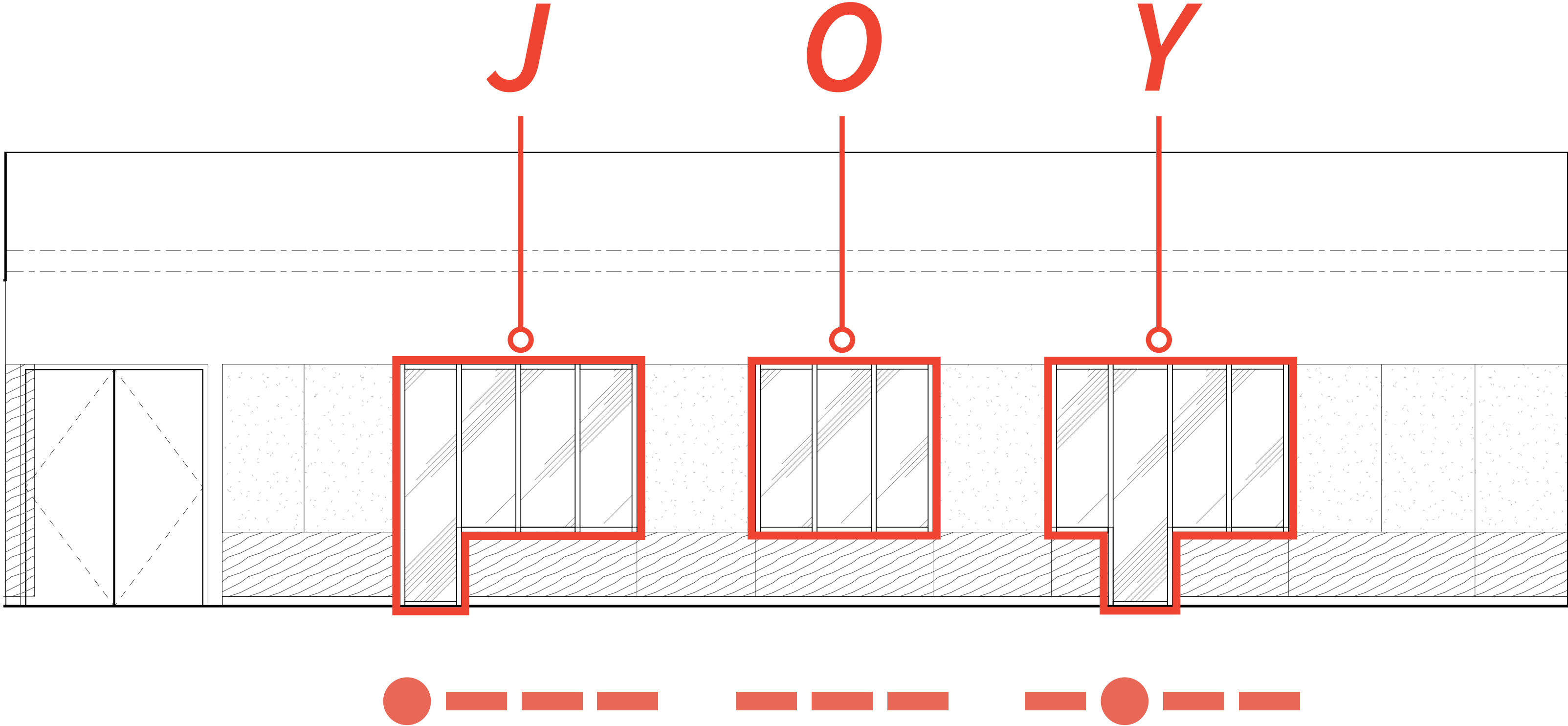
North Elevation



South Elevation



A ● -	J ● - - -	S ● ● ●
B - ● ● ●	K - ● -	T -
C - - ● ●	L ● - ● ●	U ● ● -
D - ● ●	M - -	V ● ● ● -
E ●	N - ●	W ● - -
F ● ● - ●	O - - -	X - ● ● -
G - - ●	P ● - - ●	Y - ● - -
H ● ● ● ●	Q - - ● -	Z - - ● ●
I ● ●	R ● - ●	



Sensory Play Circuit Diagrams



The Importance of Play



- Encourages sensory play
- Exploration of technology
- Sparks curiosity



Recessed Windows & West Elevation



The Importance of Play



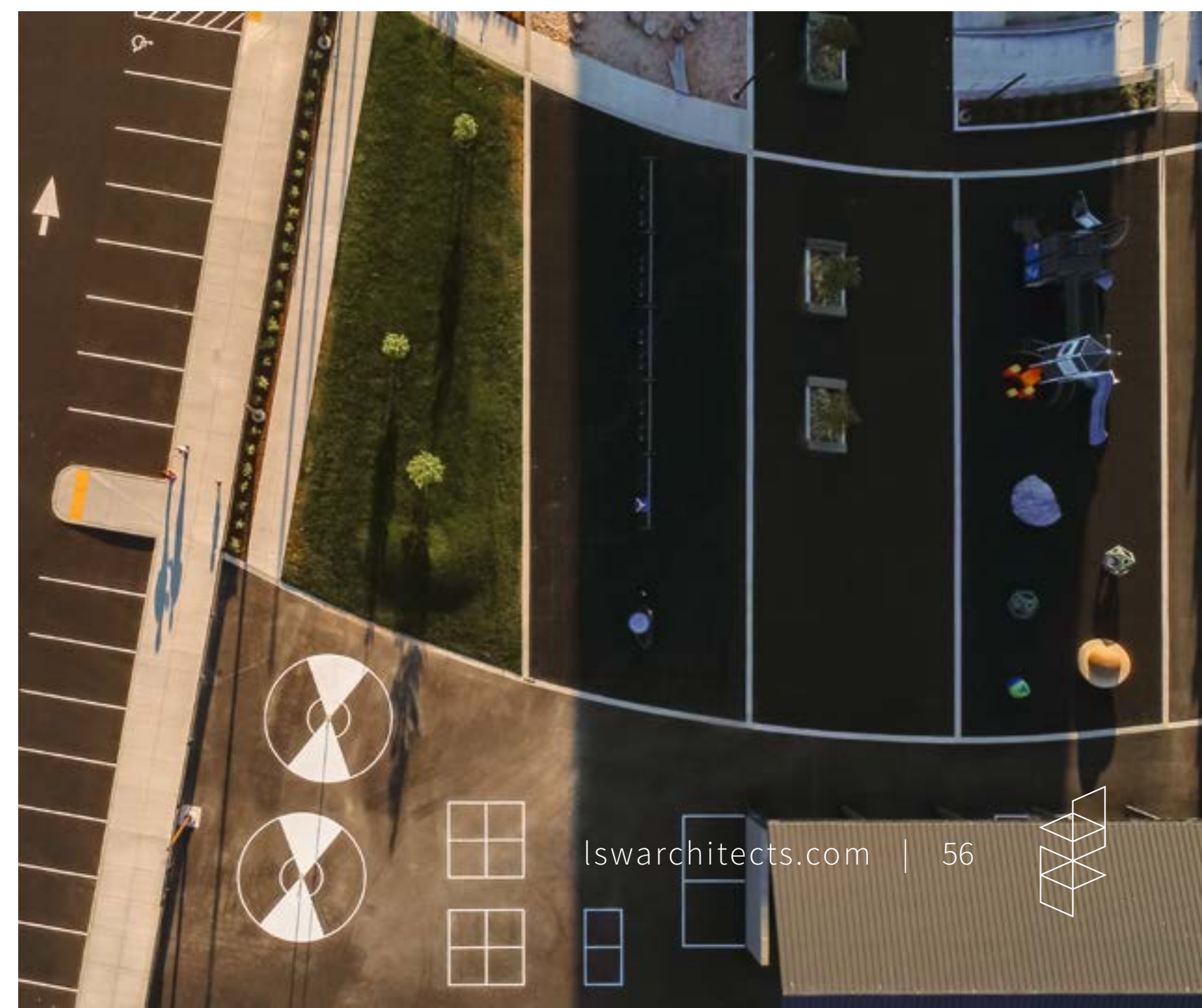
- Based on the concept of Brise Soleil
- Recessed windows prevent sunlight during building operation hours
- Reduces solar heat gain



Nature Play & Playground Equipment



The Importance of Play



Kinder Play & Saturn Rings

The Importance of Play

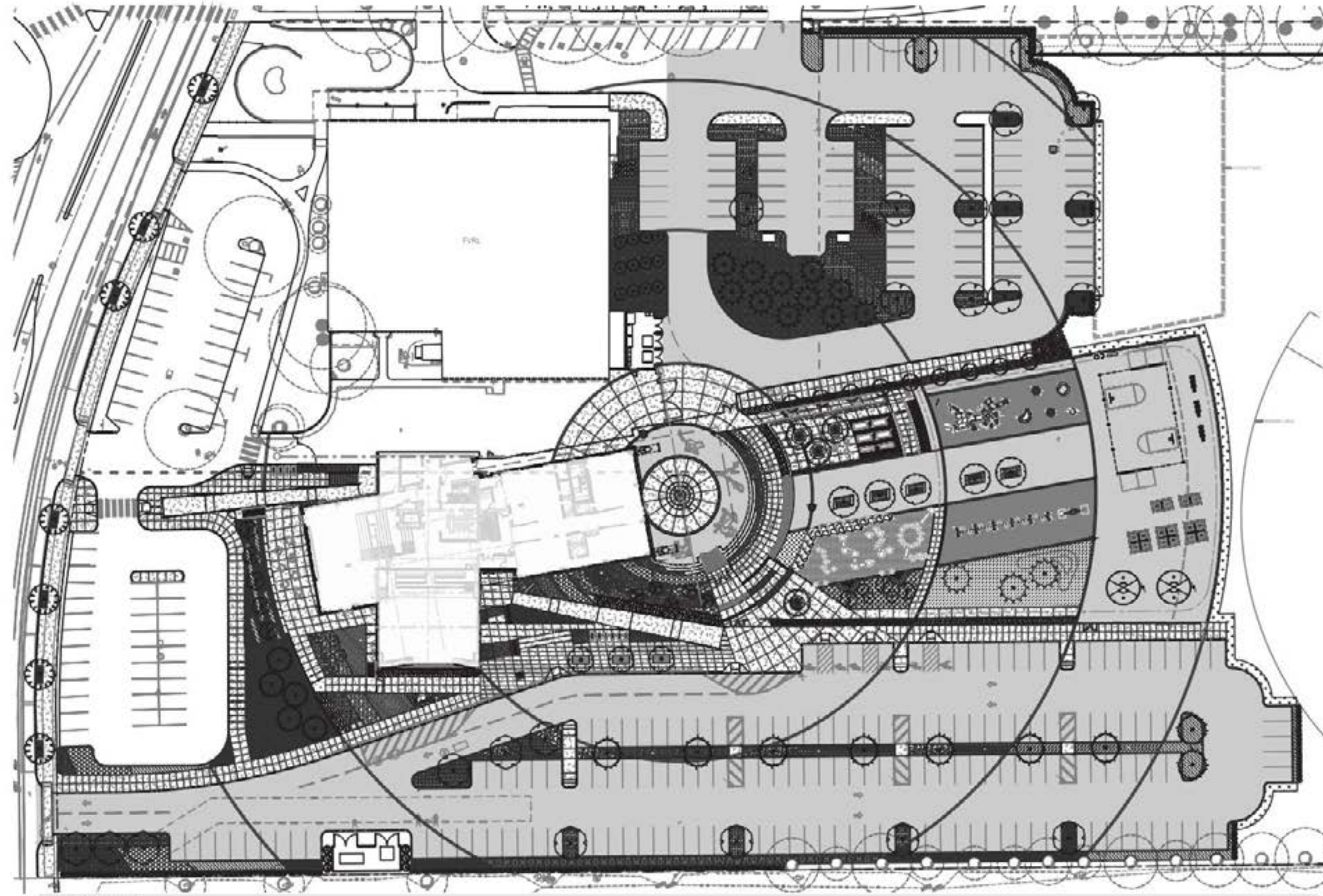


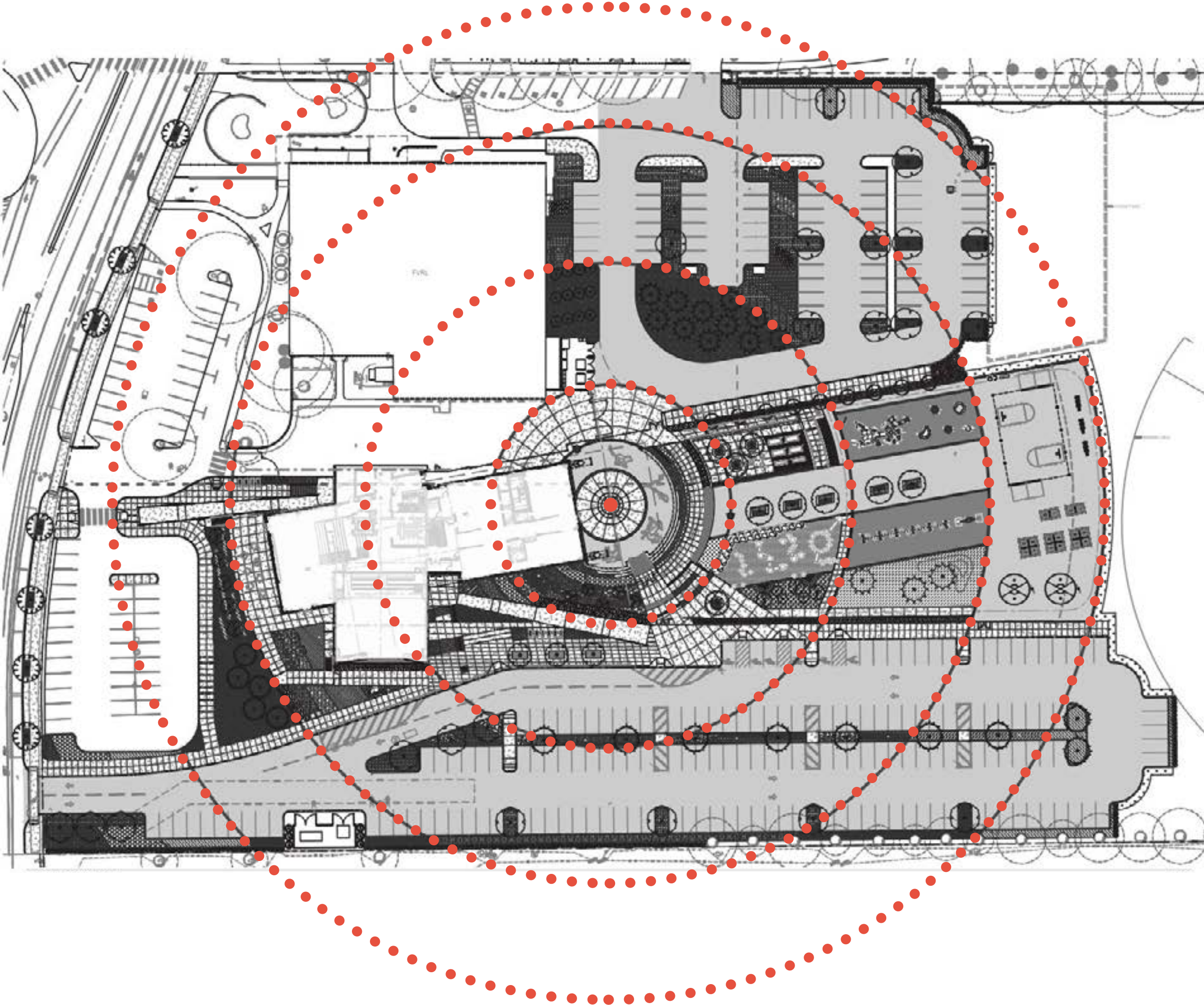
351C
COZY
CAPSULE
CÁPSULA
ESPACIAL

- Mission Control — Staff Work Room
- Space Station — Meeting Room
- Shuttle Gallery — Staff Break Room
- Launch Pad — Team Office
- Cozy Capsule — Learning Nook
- Lunar Landing — Presentation Area









Solar System Exploration — Light Fixtures



The Importance of Play



NASA Connection

Dottie Metcalf-Lindenburger, a former science teacher at VPS and a NASA selected astronaut speaks as a special guest at VITA's dedication ceremony in October 2022.



The Importance of Play





Contact Us!

esther@lsw-architects.com

kyle@lsw-architects.com

LSWArchitects.com

Questions?





Contact Us!

esther@lsw-architects.com

kyle@lsw-architects.com

LSWArchitects.com

Questions?

