

# Empowering Student Voices for Design Justice



# Agenda

- Introductions
- Multiple Pathways to Graduation Background
- Student Engagement
- A Students Perspective
- Design Implementation
- Q and A/ Discussion





# Panelists



**LORNA FAST BUFFALO HORSE EdD**  
Area Senior Director of MPG  
Programs and Focus Option  
Schools  
Portland Public Schools



**JACQUELYN SANTA LUCIA**  
Program Director  
Your Street Your Voice



**SABINA ALAMO-SELIS**  
Student  
Alliance High School



**JOE ECHEVERRI AIA, LEED AP BD+C**  
Principal  
Bassetti Architects



# Background and Context

**Provide educational options for all youth that empower, engage, and prepare them for college, work training, and global citizenship while serving as a vanguard for systemic educational change.**

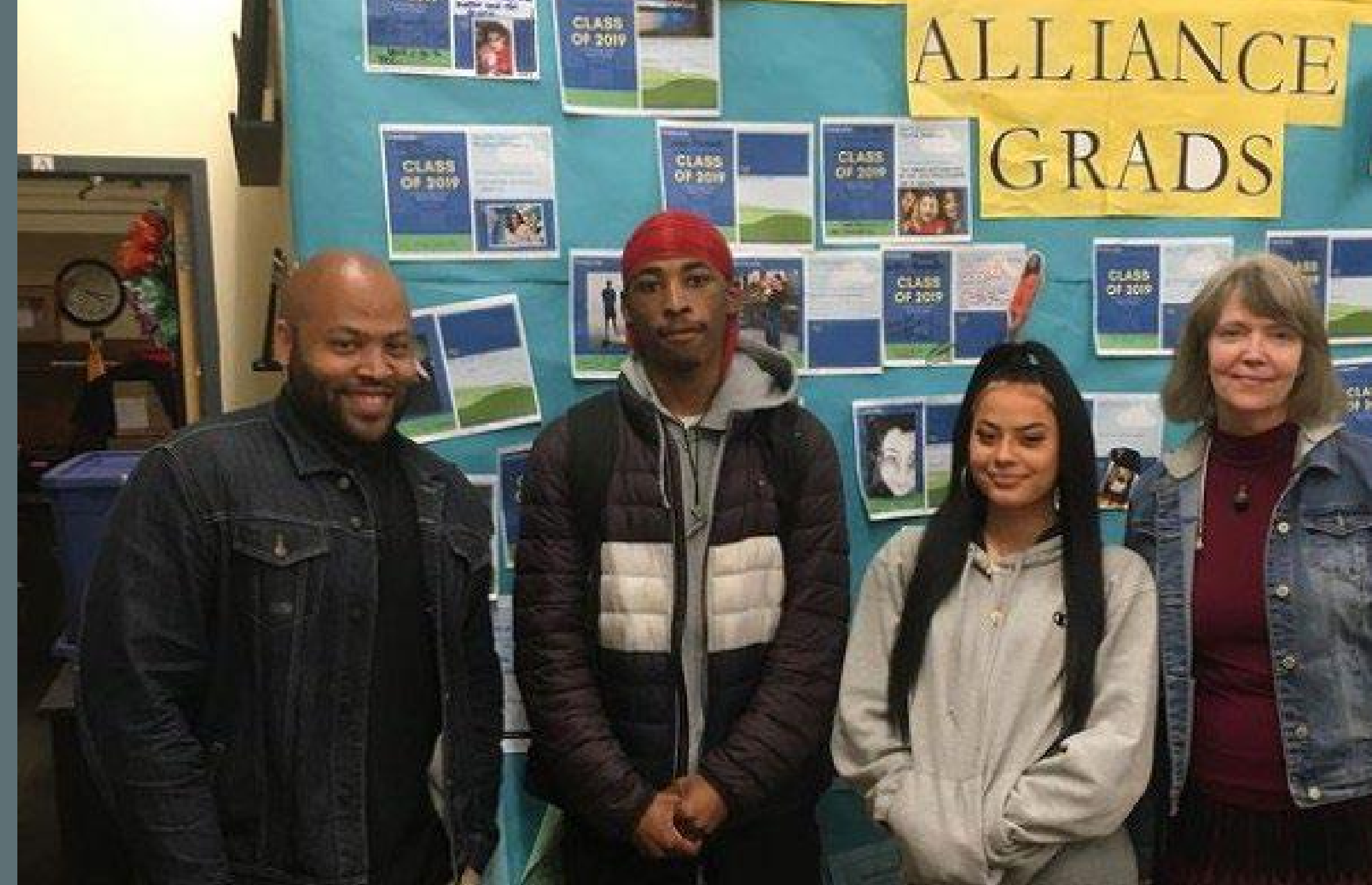
MPG MISSION STATEMENT





# Background and Context

- Multiple Schools and Programs
  - Alliance High School (two campuses joining)
  - DART School (day and residential treatment)
  - Teen Parent District Offices and Student Childcare
  - Reconnection Services and Reconnection Center





# MPG Students Resemble National Trends

- Approximately 1 million High School students (1/3 of all expected graduates), fail to earn a diploma each year.
- Students of color, students in poverty, and students with disabilities are all over-represented in these numbers.

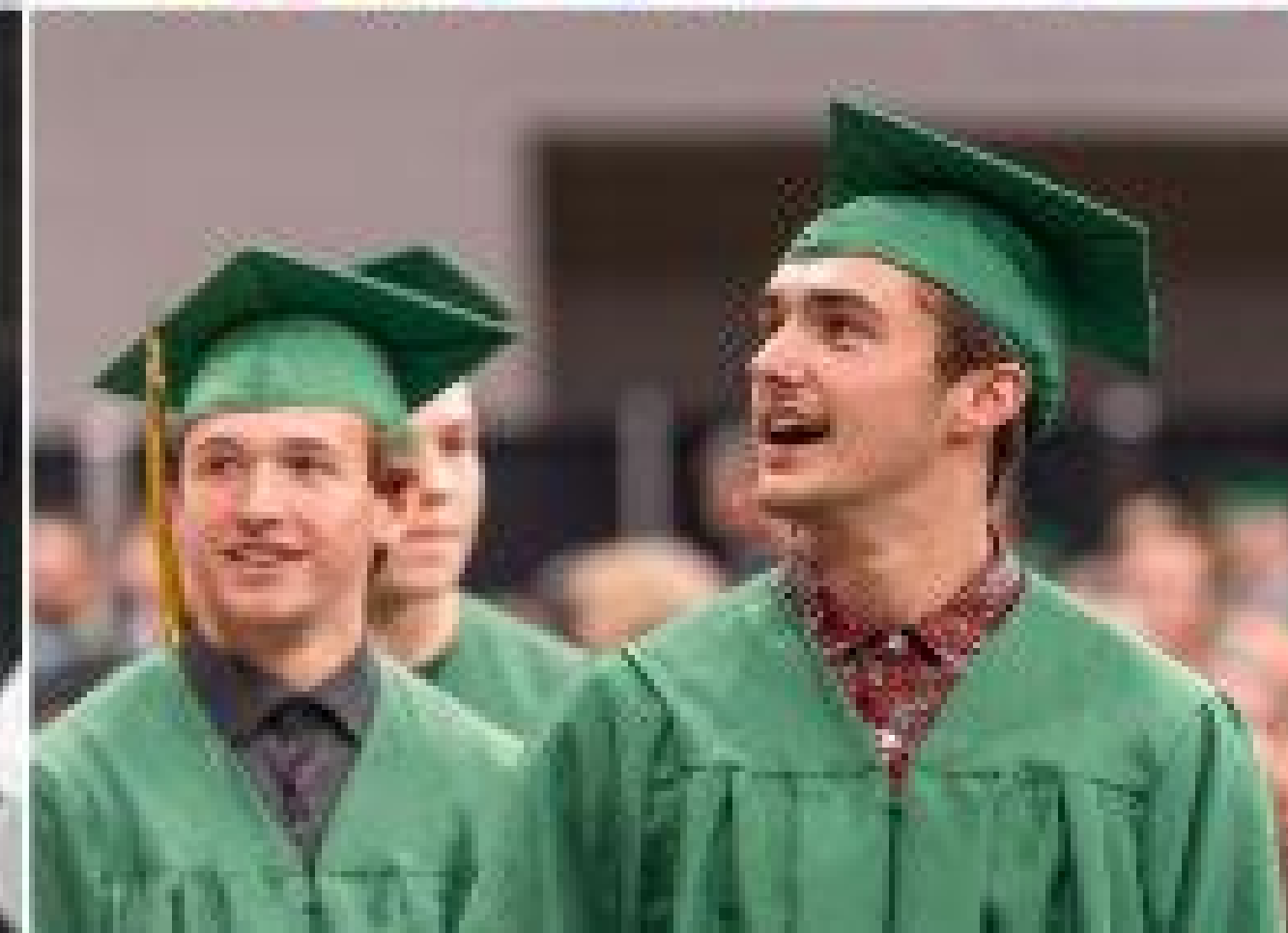




# Context

## WHO ARE MPG STUDENTS?

- **Strengths**
  - Highly independent
  - Resilient
- **Challenges**
  - Academic issues
  - Lack of engagement
  - Bored
  - Social-emotional issues





# Learning Community

“

**I want my area to be inclusive of all people. I want a place where students can be able to find their voice.**

MPG STUDENT

”





# Student Empowerment





# Design Advisory Group





CTE











**YSYV**

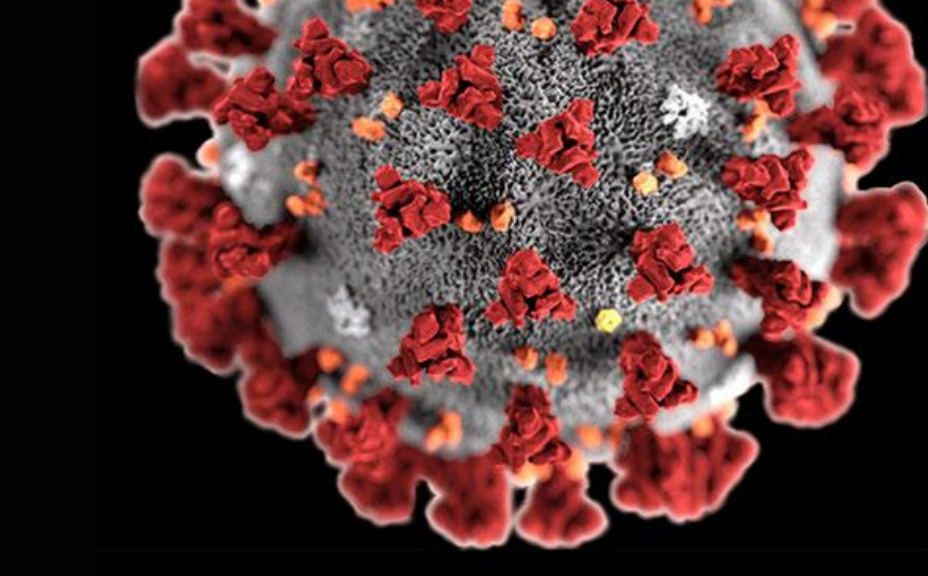
**Your Street  
Your Voice**

**IF YOU CAN CHANGE ONE THING IN  
YOUR NEIGHBORHOOD THROUGH  
DESIGN, WHAT WOULD IT BE?**

# YSYV

**Your Street Your Voice (YSYV)** and **EmpowHER**, are paid learning programs for youth ages 14-20 of Centering BIPOC LGBTQIA+ to learn about careers in the built environment, and use design as a tool for social and environmental justice. YSYV and EmpowHER are design studio formats where students are asked on day one: **‘If you could change one thing in your neighborhood through design, what would it be?’** The intention of YSYV is to empower youth to be agents of change as designers and advocates for racial and environmental justice.





**Where is a place you feel JOY?**  
**Where is a place you feel JUSTICE?**





# BLACKSPACE MANIFESTO

We are Black urban planners, architects, artists, activists, designers, and leaders working to protect and create Black spaces. Our work includes a range of activities from engagement and projects in historically Black neighborhoods to hosting cross-disciplinary convenings and events.

While what we do is very important, the way we do it is also critical. Acknowledging our triumphs, oppressions, aspirations, and challenges, we've

created this manifesto to guide our growth as a group and our interactions with one another, partners, and communities.

We push ourselves, our partners, our fields, and our work closer to these ideals so we may realize a present and future where Black people, Black spaces, and Black culture matter and thrive.

## CREATE CIRCLES, NOT LINES

Create less hierarchy and more dialogue, inclusion, and empowerment.



## CHOOSE CRITICAL CONNECTIONS OVER CRITICAL MASS

Quality over quantity. Focus on creating critical and authentic relationships to support mutual adaptation and evolution over time.\*

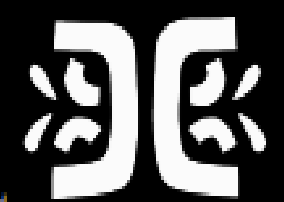


## MOVE AT THE SPEED OF TRUST

Grow trust and move together with fluidity at whatever speed is necessary.\*

## BE HUMBLE LEARNERS WHO PRACTICE DEEP LISTENING

Listen deeply and approach the work with an attitude towards learning, without assumptions and predetermined solutions. Take criticism without dispute.



## CELEBRATE, CATALYZE, & AMPLIFY BLACK JOY

Black joy is a radical act. Give due space to joy, laughter, humor, and gratitude.



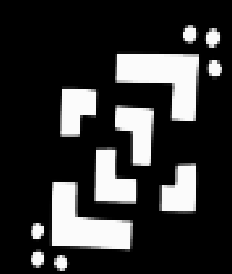
## PLAN WITH, DESIGN WITH

Walk with people as they imagine and realize their own futures. Be connectors, conveners, and collaborators—not representatives.



## CENTER LIVED EXPERIENCE

Lived experience is an important expertise; center it so it can be a guide and touchstone of all work.



## SEEK PEOPLE AT THE MARGINS

Acknowledge the structures that create, maintain and uphold inequity. Learn and practice new ways of intentionally making space for marginalized voices, stories, and bodies.

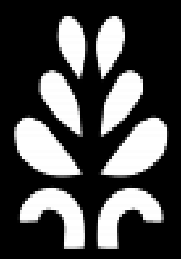
## RECKON WITH THE PAST TO BUILD THE FUTURE

Meaningfully acknowledge the histories, injustice, innovations, and victories of spaces and places before new work begins. Reckon with the past as a means of healing, building trust, and deepening understanding of self and others.



## PROTECT & STRENGTHEN CULTURE

Make visible and strengthen Black cultures and spaces to honor their sacredness and prevent their erasure. Amplify and support Black assets of all forms—from leaders, institutions, and businesses to arts, culture, and histories.



## CULTIVATE WEALTH

Cultivate a wealth of time, talent, and treasure that provide the freedom to risk, fail, learn, and grow.



## FOSTER PERSONAL & COMMUNAL EVOLUTION

Make opportunities to expand leadership and capacity.

## DEFUND AND REALLOCATE POLICE FUNDING

## RADICAL VISIONS FOR AFFORDABLE NEIGHBORHOODS

## RADICAL REVISION TO POWER + CAPITAL

## END THE USE CPTED

## SHIFT PUBLIC POLICY

## PROTECT CULTURAL SPACES

## ABOLISH THE CARCERAL STATE

## COMMUNITY DETERMINATION

## ANTI-RACIST DESIGN PRAXIS

**Challenge Power. Dismantle Systems. Design a Just World.**

**Who/What is being CENTERED?**  
**Who/What is being ERASED?**  
**Who/What is being BURDENED?**



# Student Voices

“

I feel like art is a big part of this community and that our school would benefit the people who have experienced trauma...

”

“

I want the space to feel open and inclusive to everyone and be a place people can always be learning, building and fixing.

”

“

I want my area to be inclusive of all people. I want a place where students can be able to find their voice.

”

# Student Voices

“

**Some ideas that guided my design were being in nature and being able to be in a calm environment when you need to.**

”

“

**Our building needs to feel less institutional than a typical school.**

”

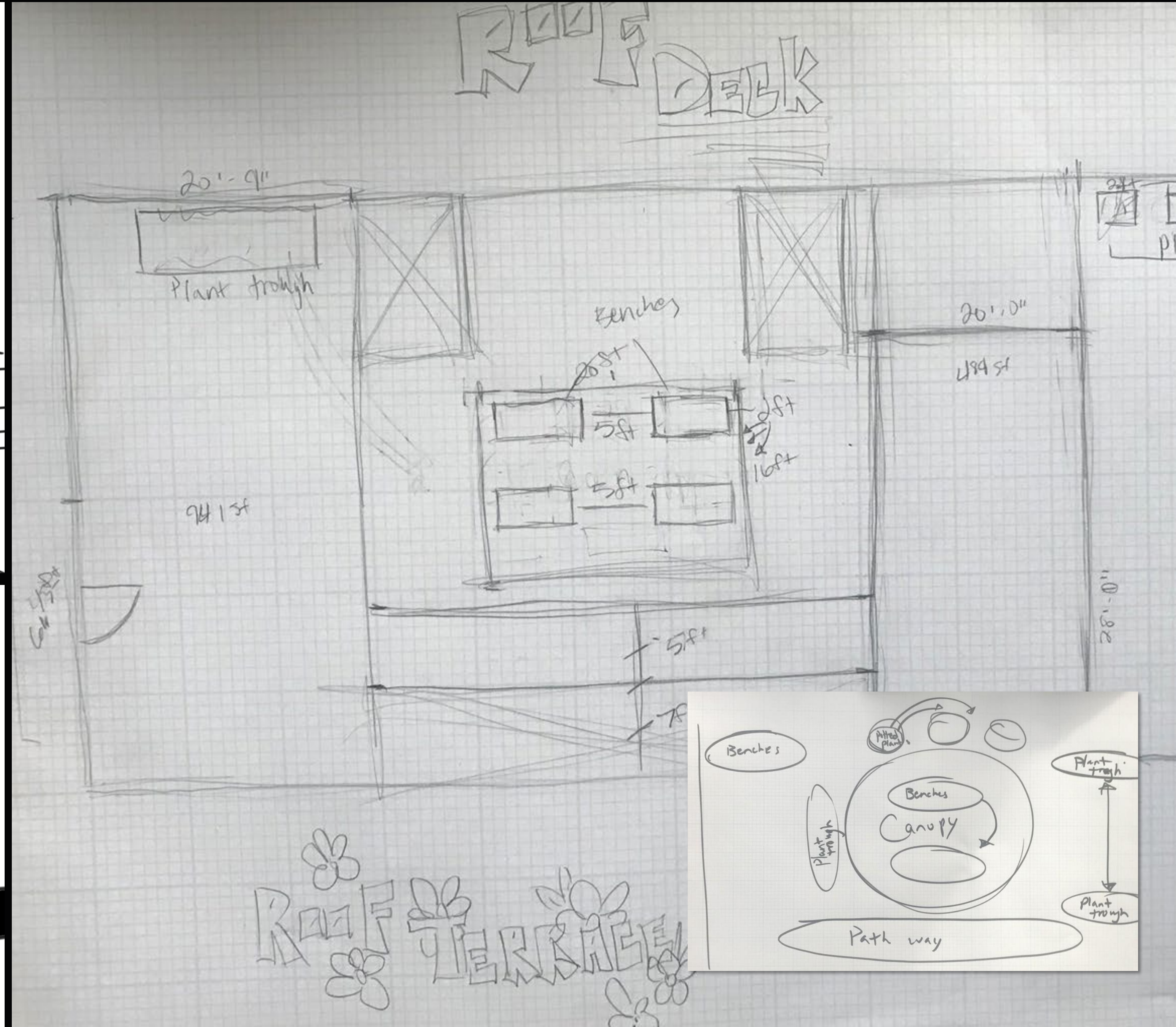
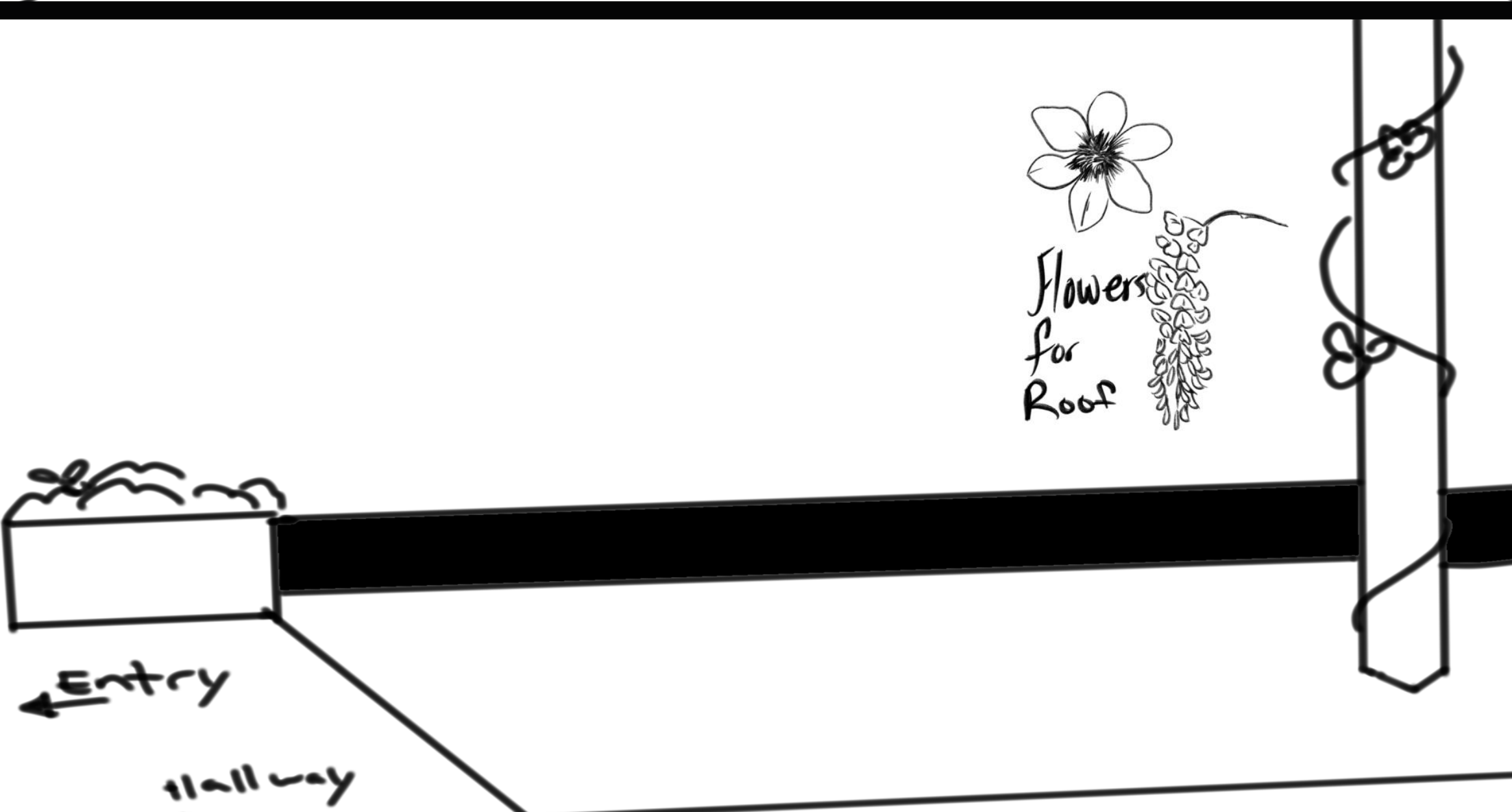
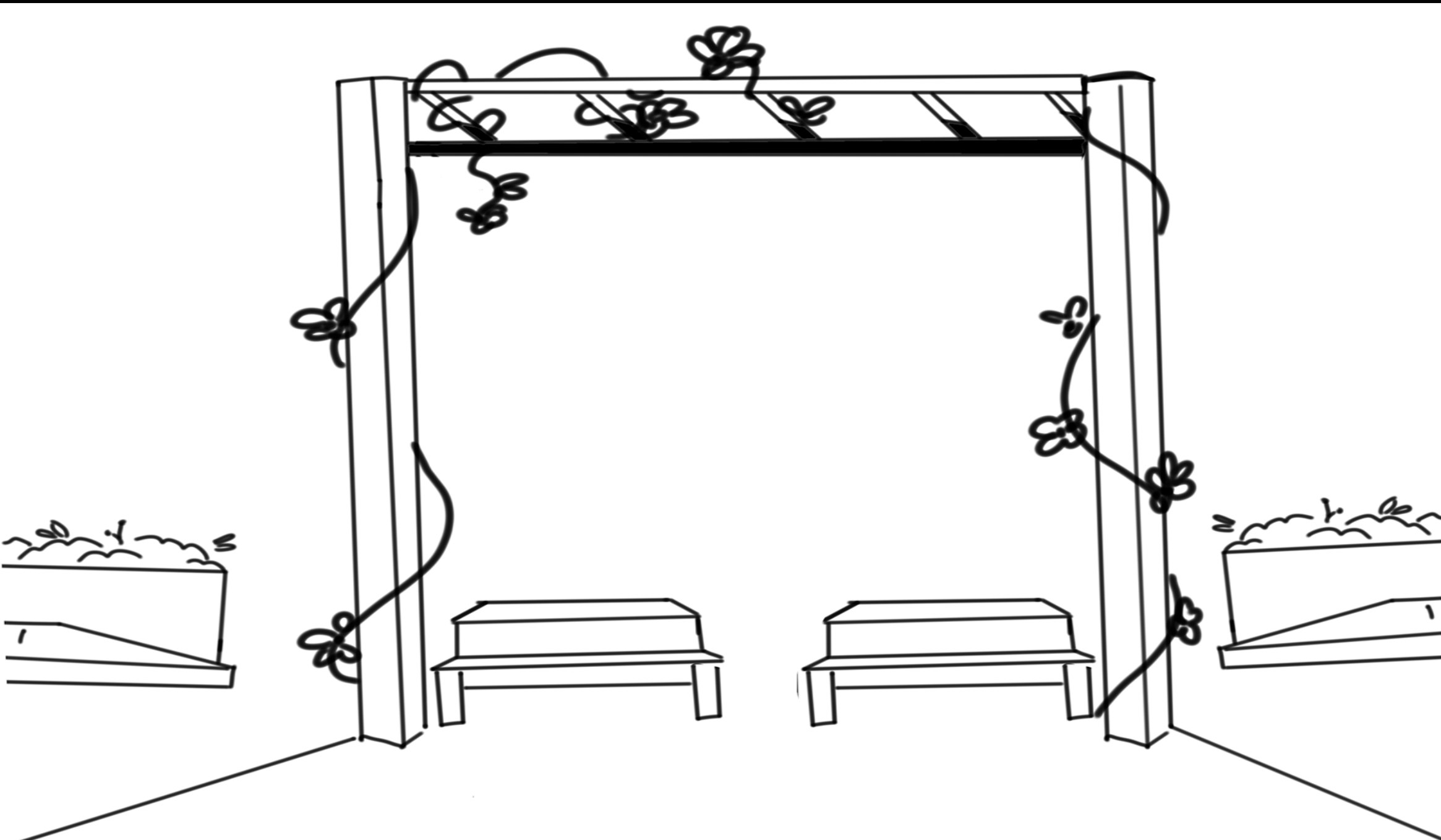
“

**I want my area to feel like a calm and safe space.**

”



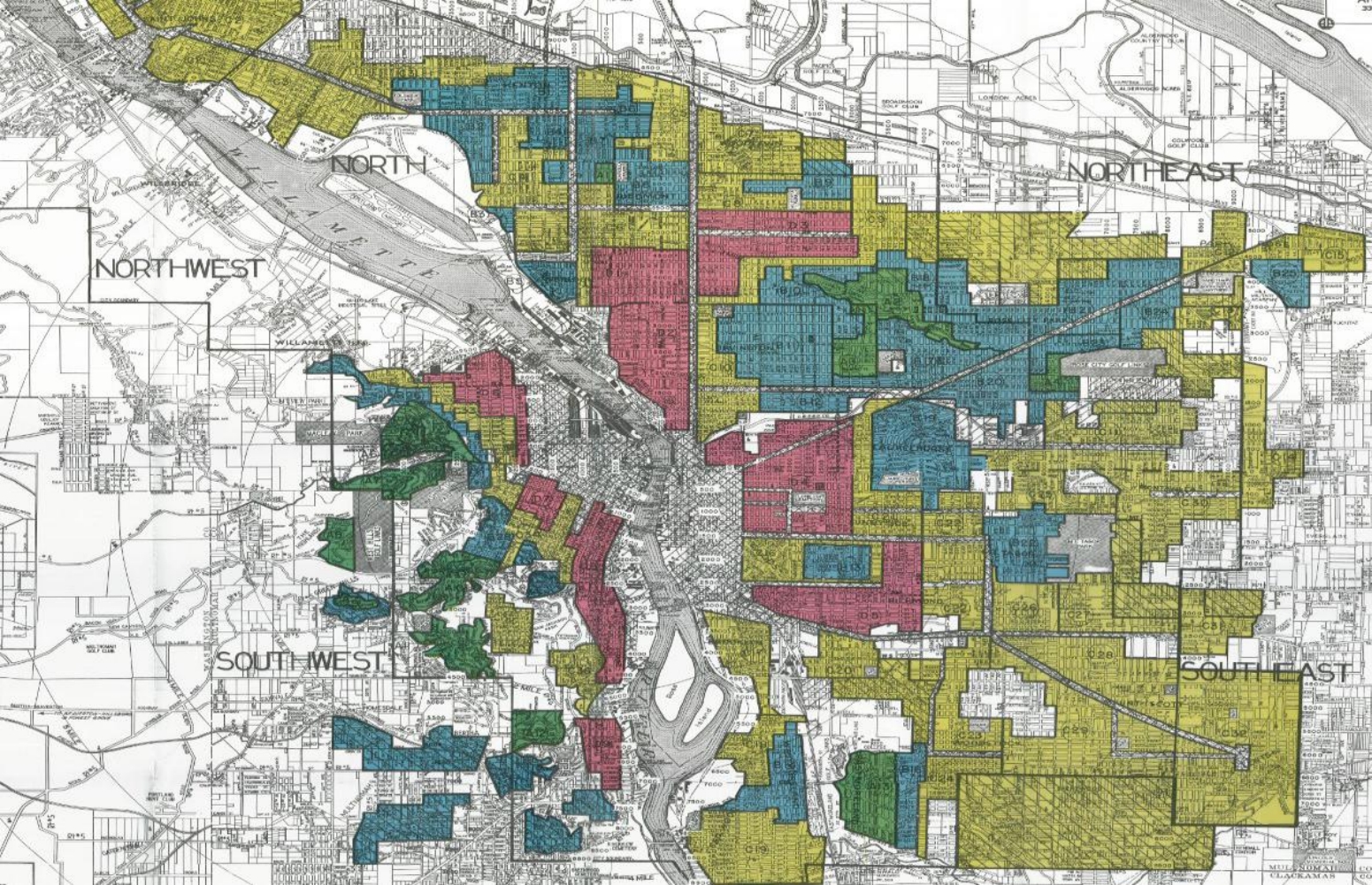
# YSYV Alliance MEEK MPG 2021 Student Work



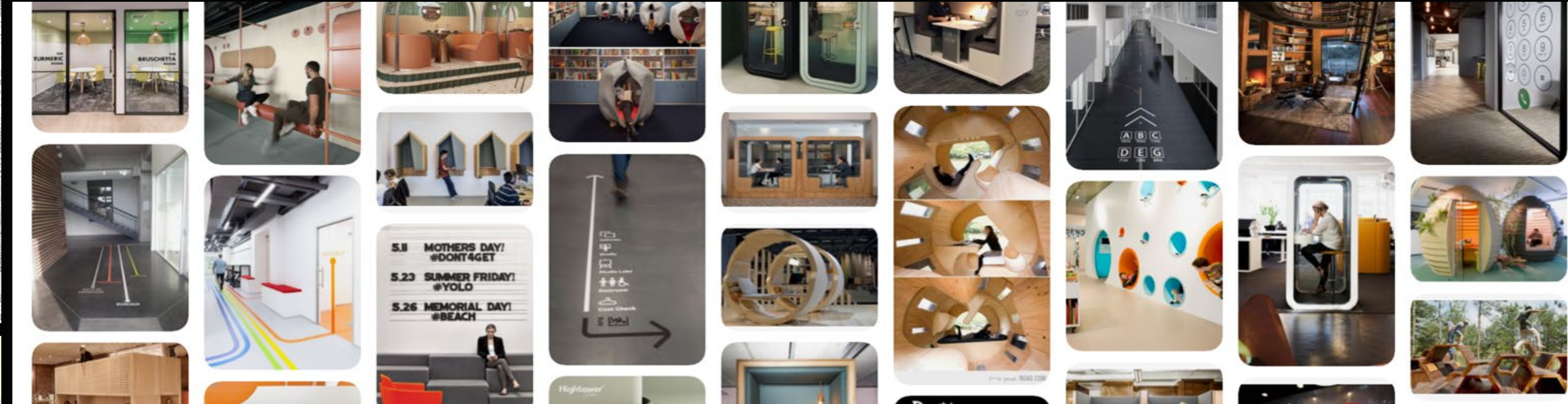
Roof Deck at MPG by Andy Martin



# YSYV Alliance MEEK MPG 2021 Student Work



shall be given against the...  
 added to the Bill of Rights, and shall be part of this constitution:  
 "Section —. No free negro or mulatto, not residing in this State  
 at the time of the adoption of this constitution, shall ever come, reside,  
 or be within this State, or hold any real estate, or make any contract, or  
 maintain any suit therein; and the Legislative Assembly shall provide  
 by penal laws for the removal by public officers of all such free negroes  
 and mulattoes, and for their effectual exclusion from the State, and for  
 the punishment of persons who shall bring them into the State, or em-



## BLACKSPACE MANIFESTO

### CREATE CIRCLES, NOT LINES

Create less hierarchy and more dialogue, inclusion, and empowerment.



### MOVE AT THE SPEED OF TRUST

Grow trust and move together with fluidity at whatever speed is necessary.



### CELEBRATE, CATALYZE, & AMPLIFY BLACK JOY

Black joy is a radical act. Give due space to joy, laughter, humor, and gratitude.



### CENTER LIVED EXPERIENCE

Lived experience is an important expertise; center it so it can be a guide and touchstone of all work.



### RECKON WITH THE PAST TO BUILD THE FUTURE

Meaningfully acknowledge the histories, injustices, innovations, and victories of spaces and places before new work begins. Reckon with the past as a means of healing, building trust, and deepening understanding of self and others.



### CULTIVATE WEALTH

Cultivate a wealth of time, talent, and treasure that provides the freedom to risk, fail, learn, and grow.



### CHOOSE CRITICAL CONNECTIONS OVER CRITICAL MASS

Quality over quantity. Focus on creating critical and authentic relationships to support mutual adaptation and evolution over time.



### BE HUMBLE LEARNERS WHO PRACTICE DEEP LISTENING

Listen deeply and approach the work with an attitude towards learning, without assumptions and predetermined solutions. Take criticism without dispute.



### PLAN WITH, DESIGN WITH

Walk with people as they imagine and realize their own futures. Be connectors, converters, and collaborators—not representatives.



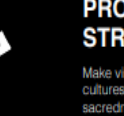
### SEEK PEOPLE AT THE MARGINS

Acknowledge the structures that create, maintain and uphold inequity. Learn and practice new ways of intentionally making space for marginalized voices, stories, and bodies.



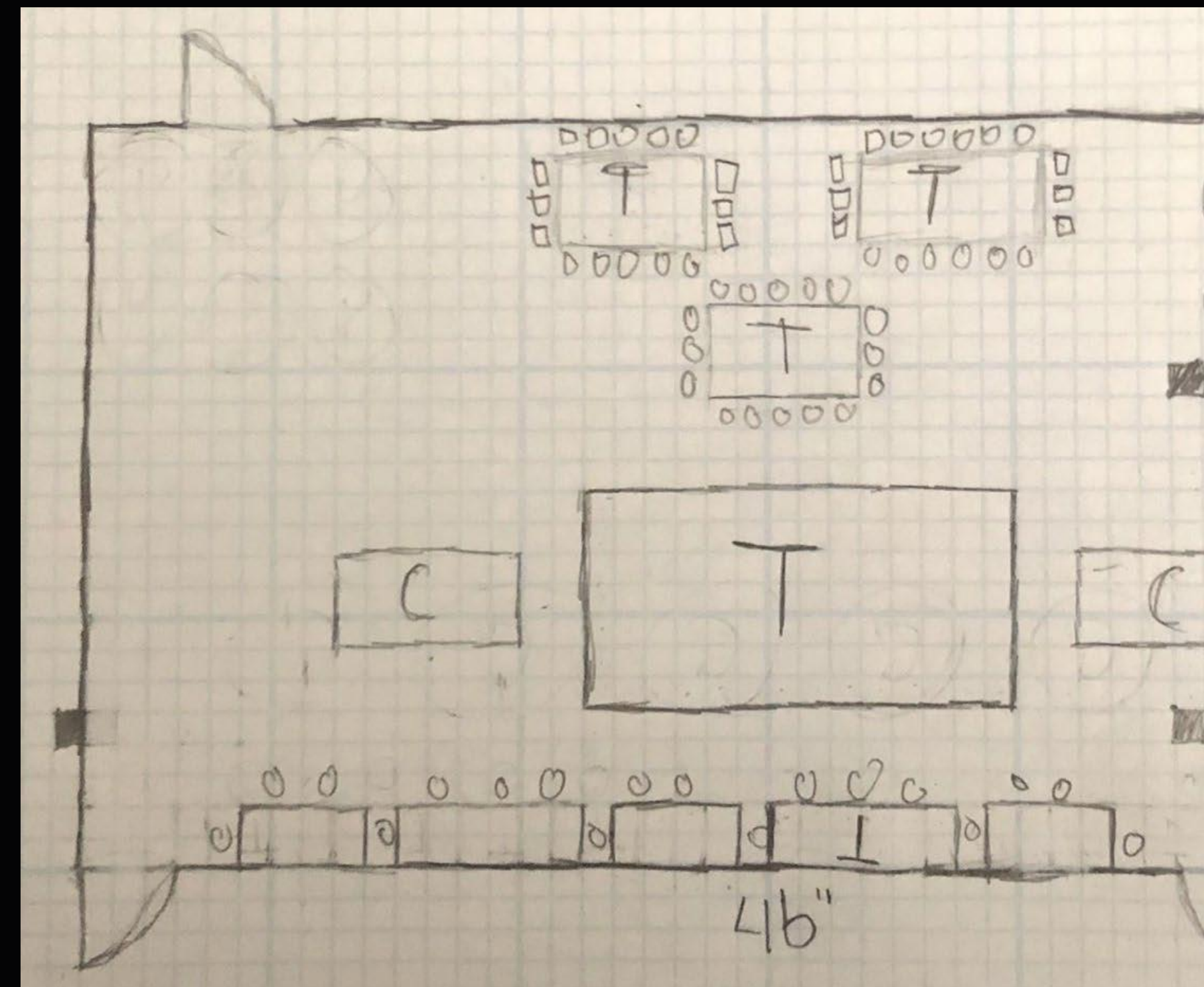
### PROTECT & STRENGTHEN CULTURE

Make visible and strengthen Black cultures and spaces to honor their sacredness and prevent their erasure. Amplify and support Black ways of all forms—from leaders, institutions, and businesses to arts, culture, and histories.



### FOSTER PERSONAL & COMMUNAL EVOLUTION

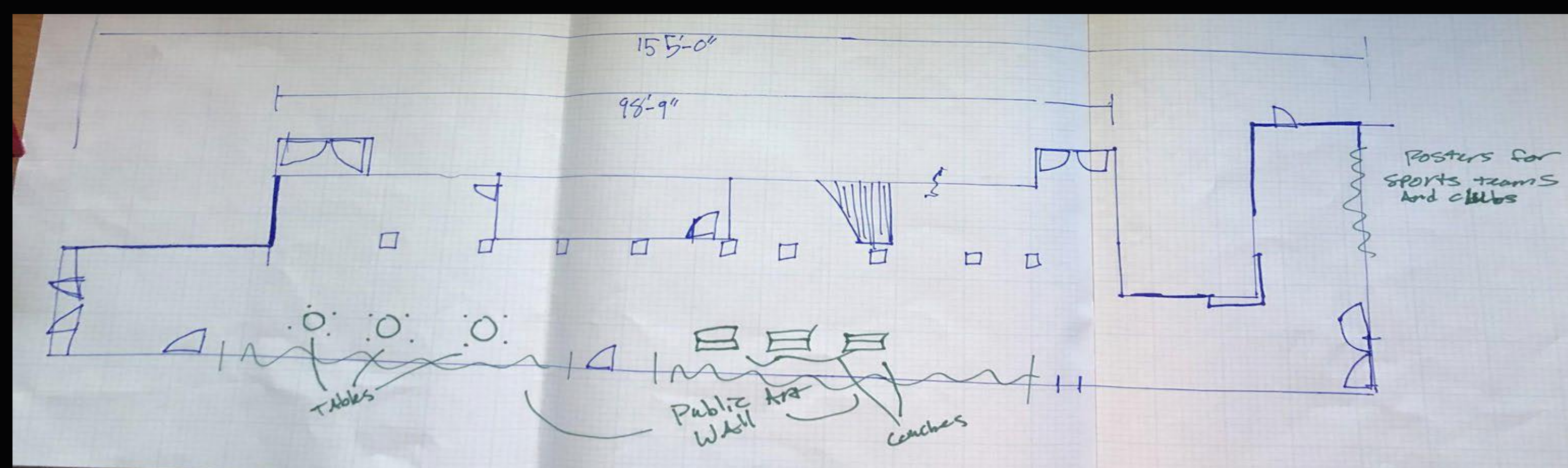
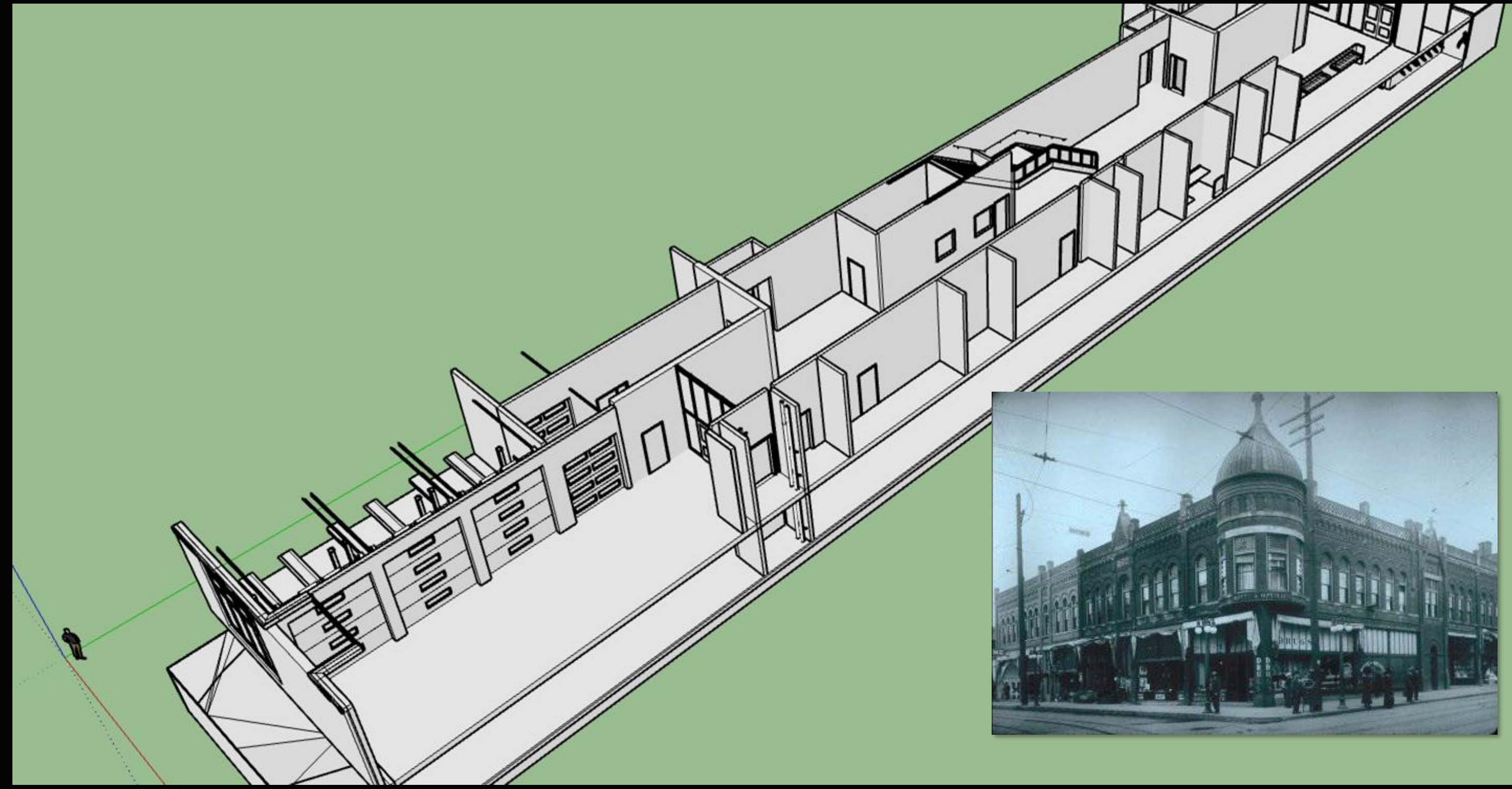
Make opportunities to expand leadership and capacity.



Flex Space at MPG by Faith Harris



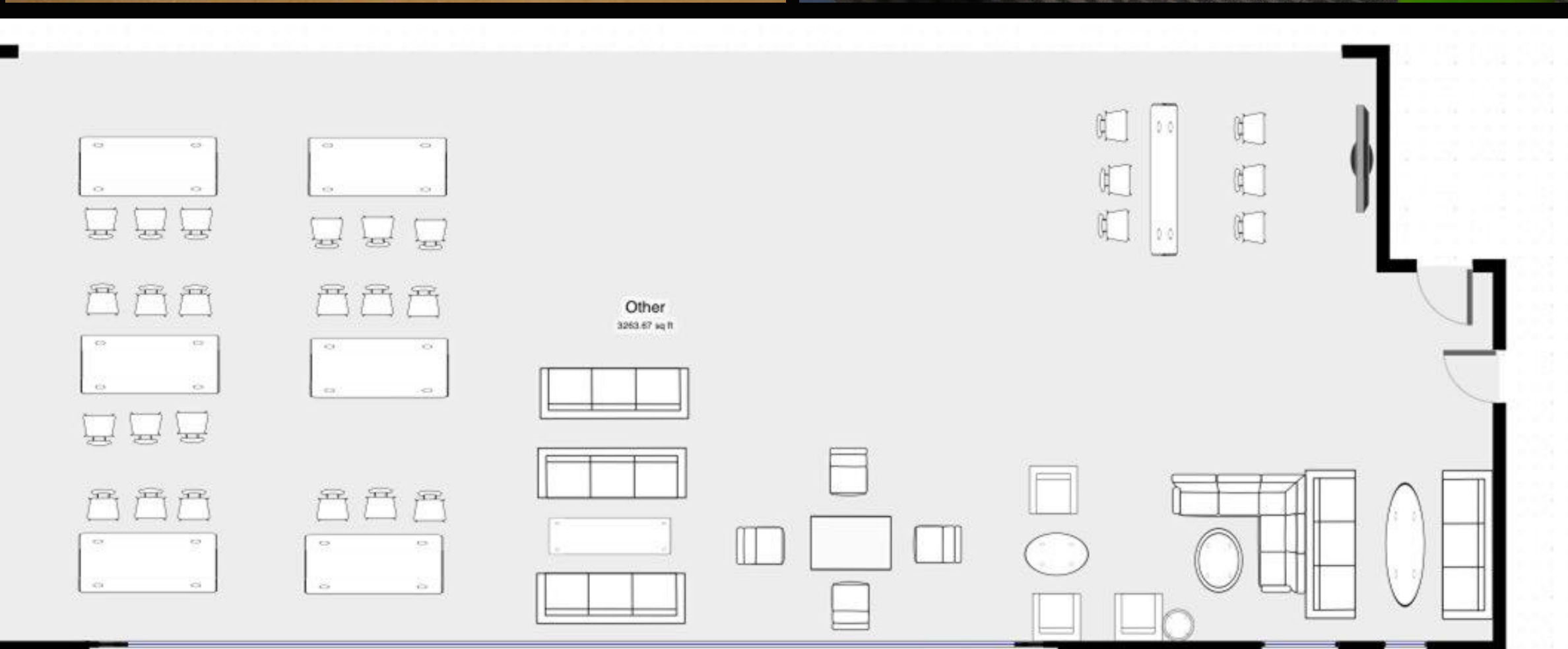
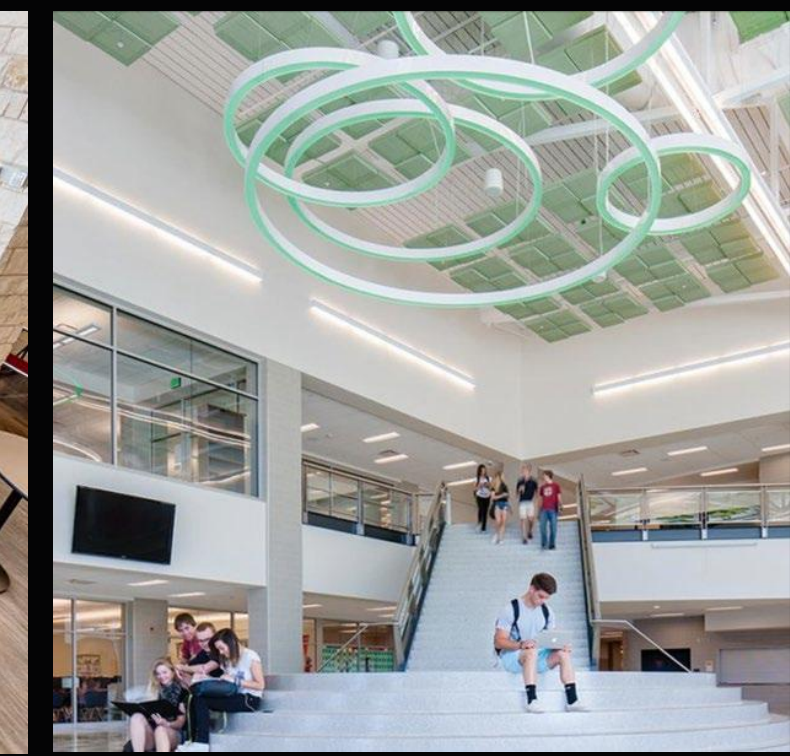
# YSYV Alliance MEEK MPG 2021 Student Work



Main Corridor Space at MPG by Ben Treat



# YSYV Alliance MEEK MPG 2021 Student Work

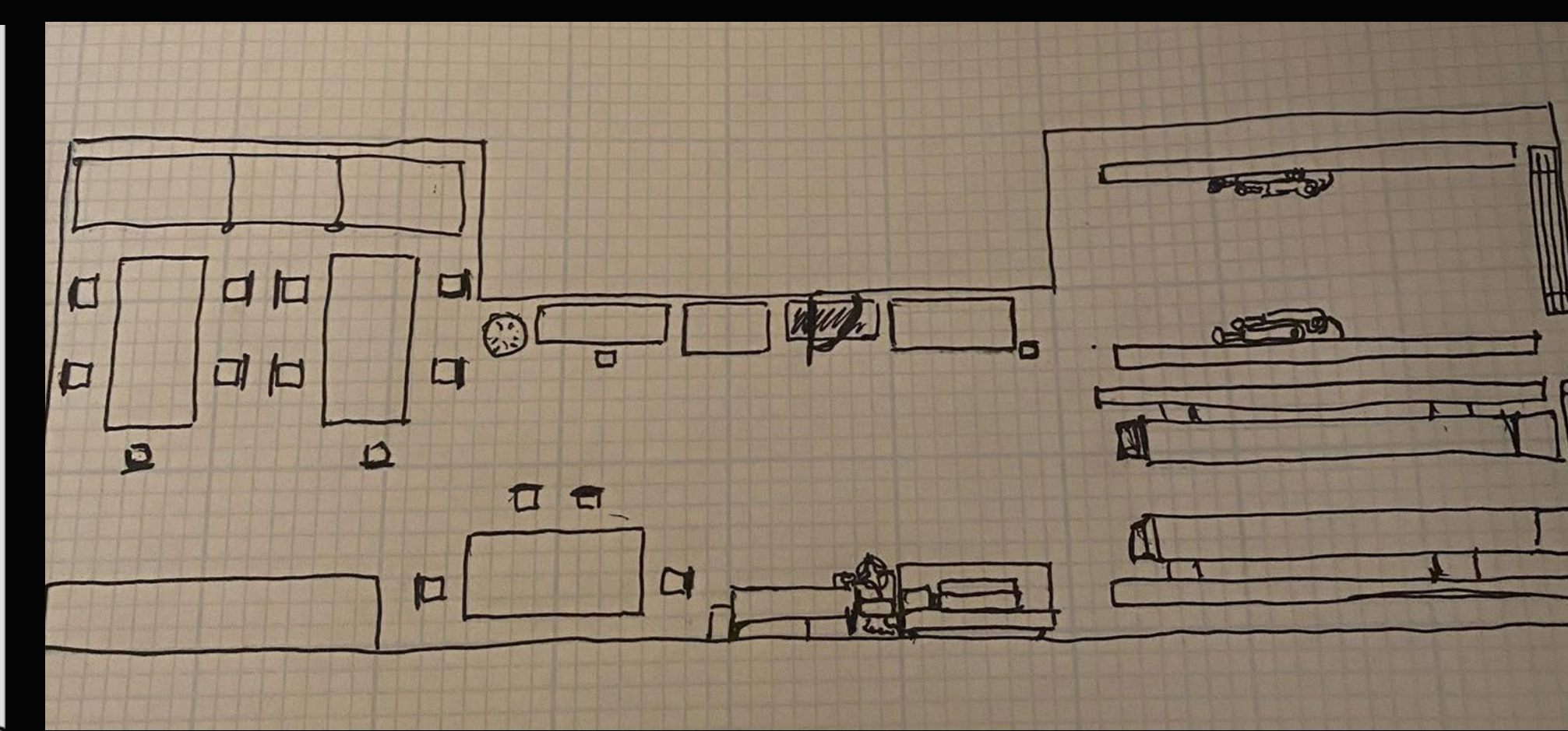
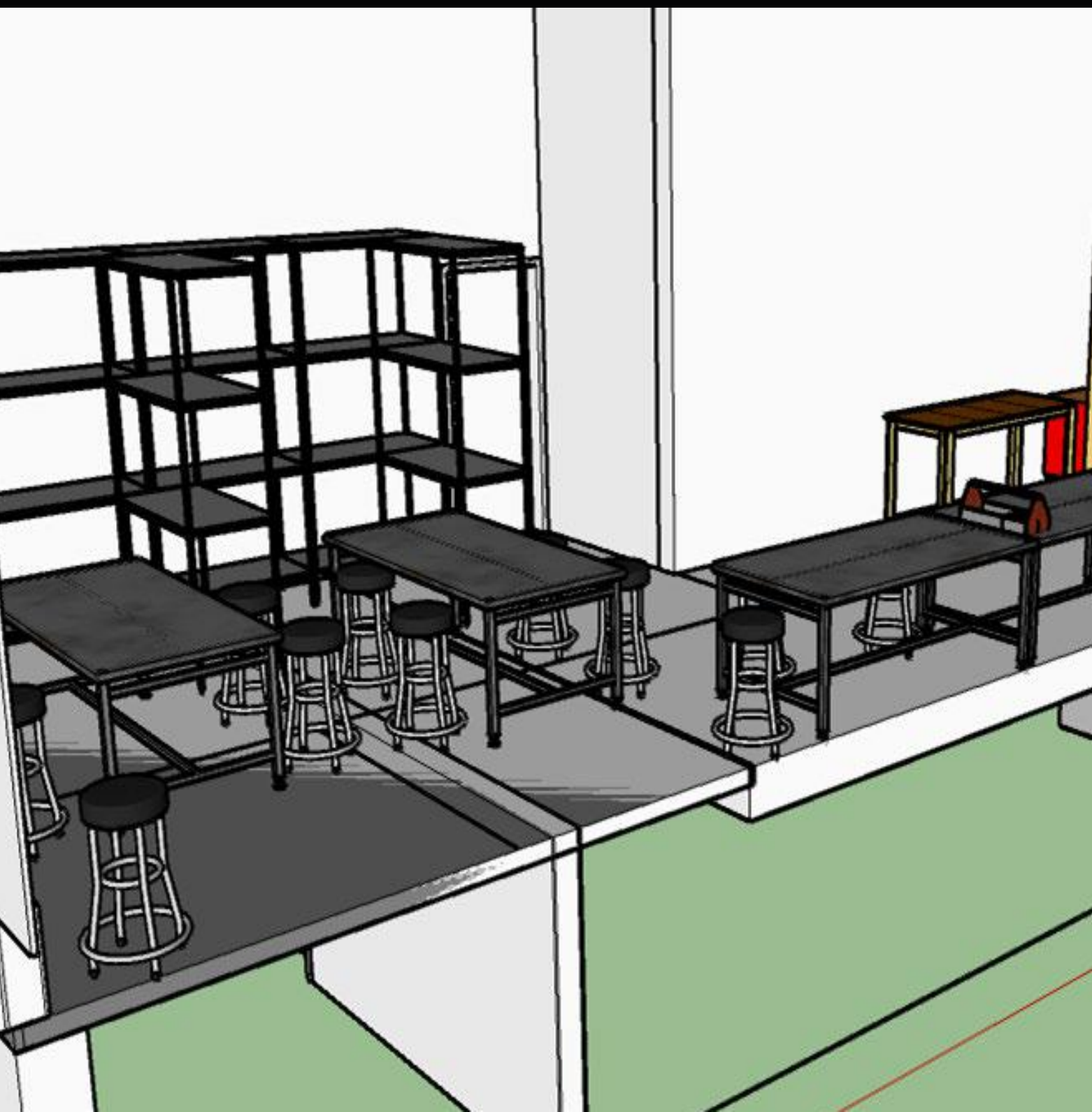
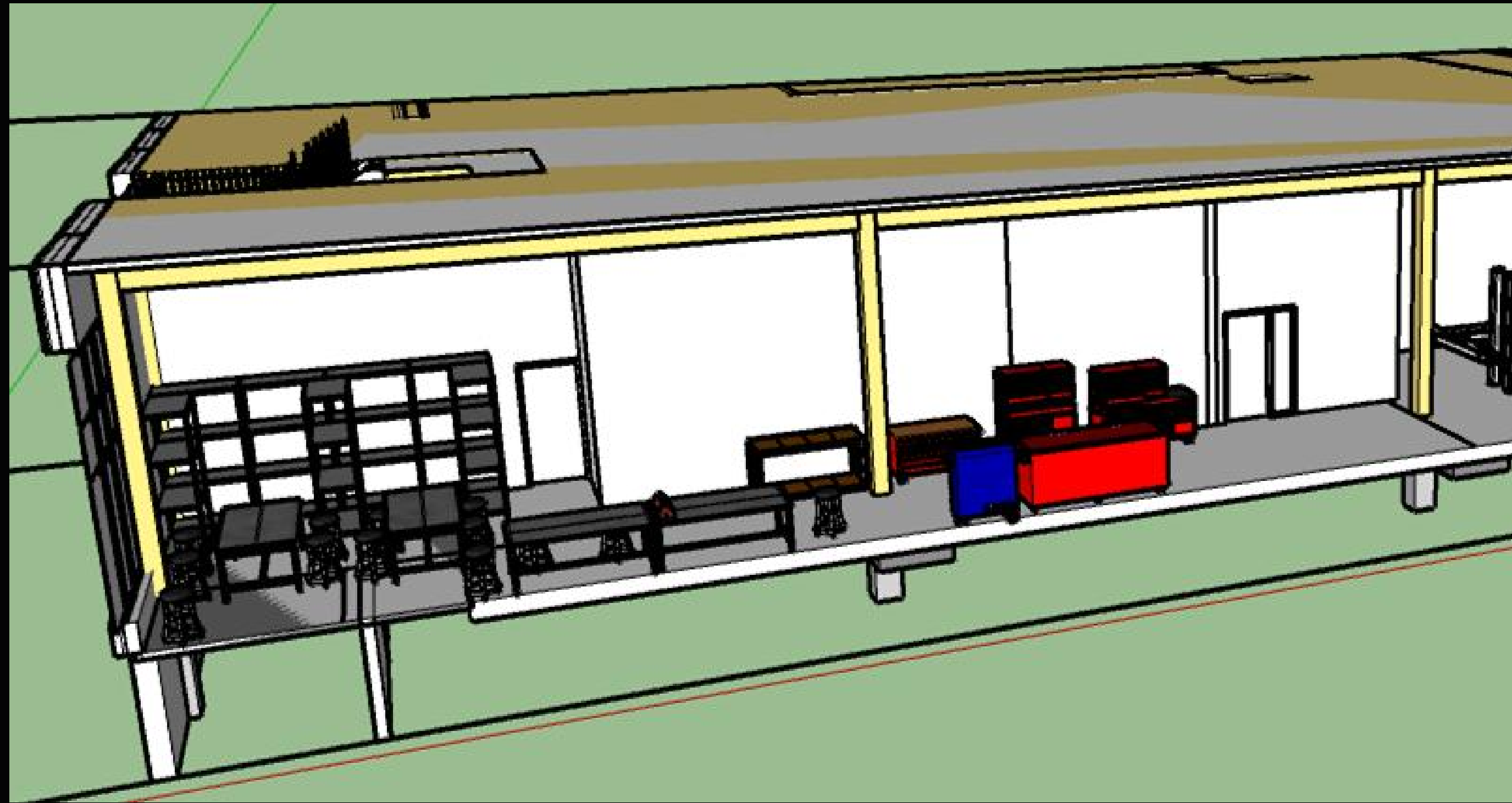


Commons Space at MPG by Liam McDermott





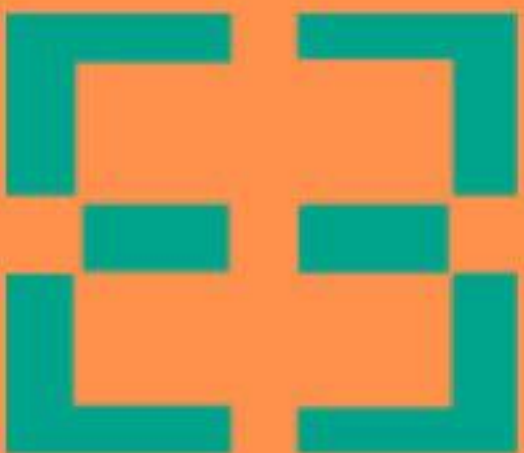
# YSYV Alliance MEEK MPG 2021 Student Work











**YSYV**  
**Your Street  
Your Voice**



**Alliance High School at Meek Campus**

4039 NE Alberta Ct. • Portland, OR 97211 • Ph (503) 916-5747 • Fx (503) 916-2680

***bassetti***  
*architects*

**Your street Your Voice MPG |  
Vital Voices In the Built Environment**

**Event Registration Link in Bio**

**When: March 4th 10:30-12:25**

**Where: ZOOM ROOM**

**F R E E & open to the Public**



Deepa Bharatkumar,  
Senior Associate  
at Bassetti Architects



Matt Ross,  
former OSE High School  
Program Director



Bonnie Hobson  
Principal at  
Alliance Meek



Nikolas Tucker  
Junior designer, BORA  
Architects and Interiors  
in Portland, OR

# Vital Voices





# MY BUILDING DESIGN PROJECT

Sabina Alamo-Selis • Term  
3 2020-2021



Spending time in  
nature is healing  
energy.





Walkways  
Tables



Pond/Terrace

Water Features

Mural

Green Walls



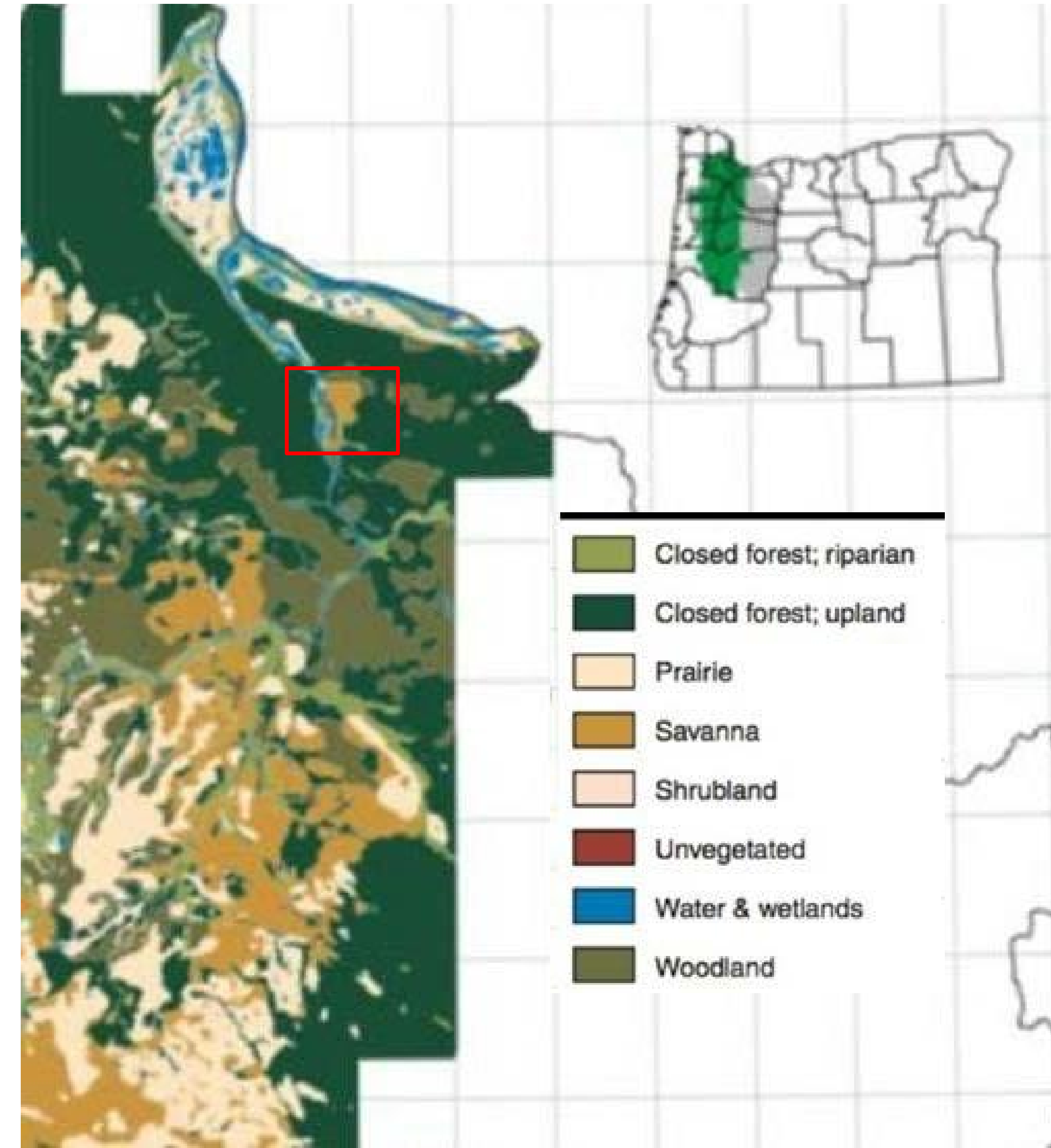


Can you have  
a ramp to connect  
directly outside. Or are  
there security reasons to  
not have a ramp.



# HISTORY

When Learning about the ecological history of the Willamette Valley, I discovered our sight is Oak Savanna and Woodland. My design is using plants from these ecologies. My hope is to restore the plants that were here first.





BENSON POLYTECHNIC HIGH SCHOOL

NE 15TH AVE

NE GLISAN ST.

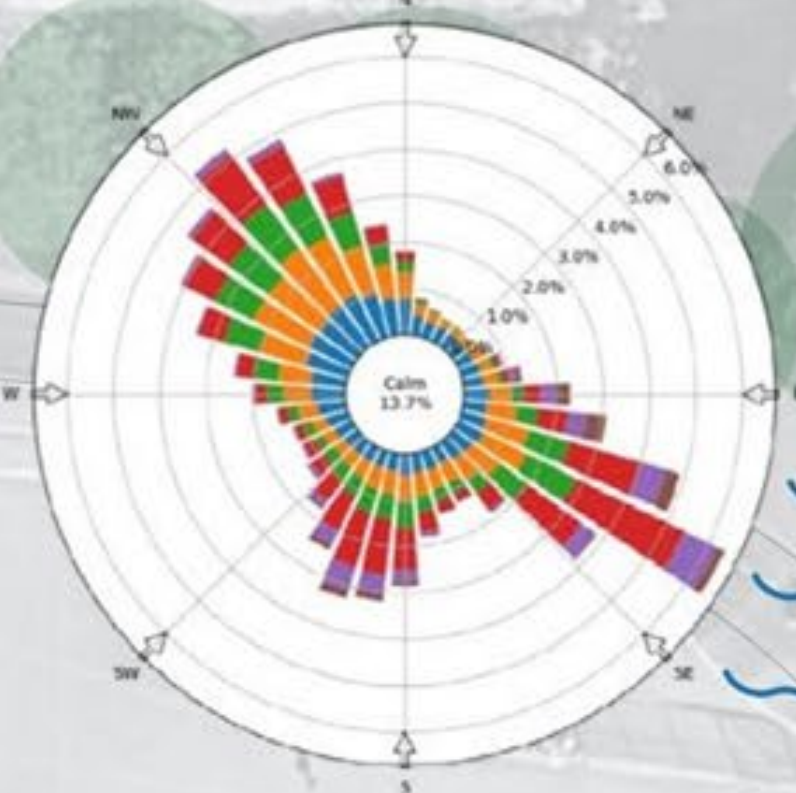
NE 16TH AVE.

2-STORY  
RESIDENTIAL

4-STORY  
RESIDENTIAL

NE FLANDERS ST.

5-STORY  
RESIDENTIAL

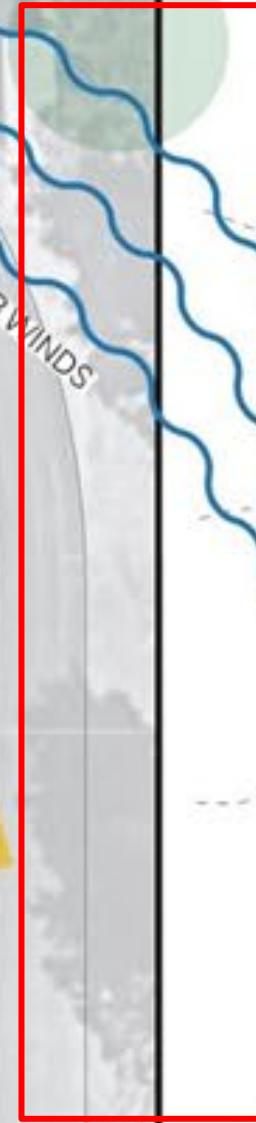


**AVERAGE MONTHLY PRECIPITATION:**  
3.5 IN. (43 INCHES PER YEAR,  
MOSTLY IN THE WINTER)

**SEASONAL TEMPERATURE RANGES:**  
81° F HIGH IN SUMMER  
35° F LOW IN WINTER

BUCKMAN  
FIELD

**CLIMATE**  
SITE ASSESSMENT WORKSHEET  
LEED v4 SS Credit Site Assessment



SUMMER WINDS

SHADE

SHADE

WINTER WINDS

4:30 PM

8:00 AM

5:20 AM

DECEMBER 21 SUN - 21°

JUNE 21 SUN - 68°





## WATER EFFICIENCY

### Prerequisites

*Outdoor water use reduction\**  
Indoor water use reduction  
*Building-level water metering\**

### Credits

*Outdoor water use reduction\**  
Indoor water use reduction  
*Cooling tower and process water use\**  
*Water metering\**

*\* BD+C only*



## SUSTAINABLE SITES

### Prerequisites

Construction activity pollution prevention

### Credits

Site assessment  
Protect or restore habitat  
Open space  
Rainwater management  
Heat island reduction  
Light pollution reduction  
Site Master Plan

All credits are applicable to  
BD+C only



## MATERIALS & RESOURCES

### Prerequisites

Storage and collection of recyclables  
Construction and demolition waste  
management planning  
*Long-term commitment\**

### Credits

*Building life-cycle impact reduction\*\**  
*Interiors life-cycle impact reduction\**  
Building product disclosure and optimization -  
environmental product declarations  
Building product disclosure and optimization -  
sourcing of raw materials  
Building product disclosure and optimization -  
material ingredients  
Construction and demolition waste management

*\* ID+C Only*

*\*\* BD+C Only*



# MATERIALS

I will have a multi-media art mural on the west wall.  
This Includes: Chalk board, green wall, and painted mural.  
Reclaimed wood for planters. Natural and reclaimed stones for fountain.









# Design Characteristics of the New School

- Opening Fall 2024
- Characterized by:
  - Smaller Numbers
  - Flexibility
  - Personalization
  - Trauma-Informed Design





# Engagement

## OUTCOMES

## ■ Themes Of Student's Work

- **Safety**
- **Community**
- **Comfort**
- **Variability**
- **Personalization**

- **Design Goals**

- **Less institutional**
- **Biophilic**
- **Foster a sense of calm**
- **Support personal control of space**

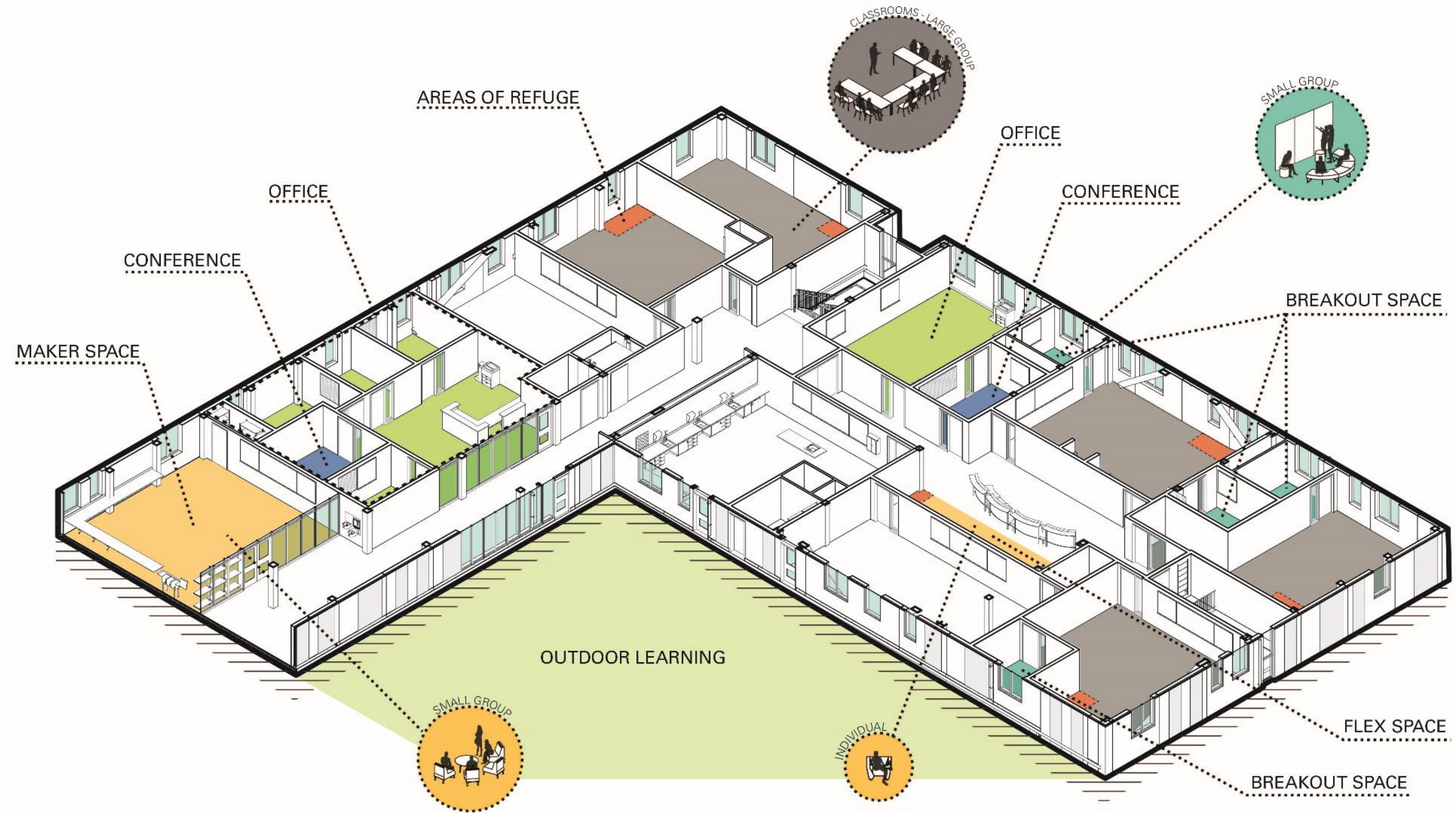




# Design

## LEARNING COMMUNITY

- Clusters of Learning
- Flexible, variable furnishings
- Spaces that support mentorship, confidentiality, and individualized learning
- Student art and murals throughout







# MPG Media Center





# MPG Classroom



# MPG Corridor







# MPG Commons



# Contact Information



LORNA FAST BUFFALO HORSE  
lfastbuf@pps.net



JACKIE SANTA LUCIA  
jasantalucia@gmail.com



JOE ECHEVERRI  
jecheverri@bassettiarch.com