



Coolidge Corner School

All Students are Not Alike:

Accommodating Diverse Student Needs
through Varieties of Learning Environments

H M
F H

ARCHITECTS

CRJA IBI

Learning Objectives

- Learn ways to work with the size of a building to create varied learning experiences at different scales
- Examine the use of a diverse array of interior and exterior spaces to expand the range of activities and experiences for students
- Examine how the relationship between the building and site create meaningful learning opportunities
- Learn about the collaborative design process and discuss strategies for balancing competing stakeholder needs

Speakers



Pip Lewis

AIA, LEED AP

Principal
HMFH Architects



Catherine Offenberg

ASLA

Principal
CRJA-IBI Group



Erin Gallentine

Parks & Open Space Director
Town of Brookline



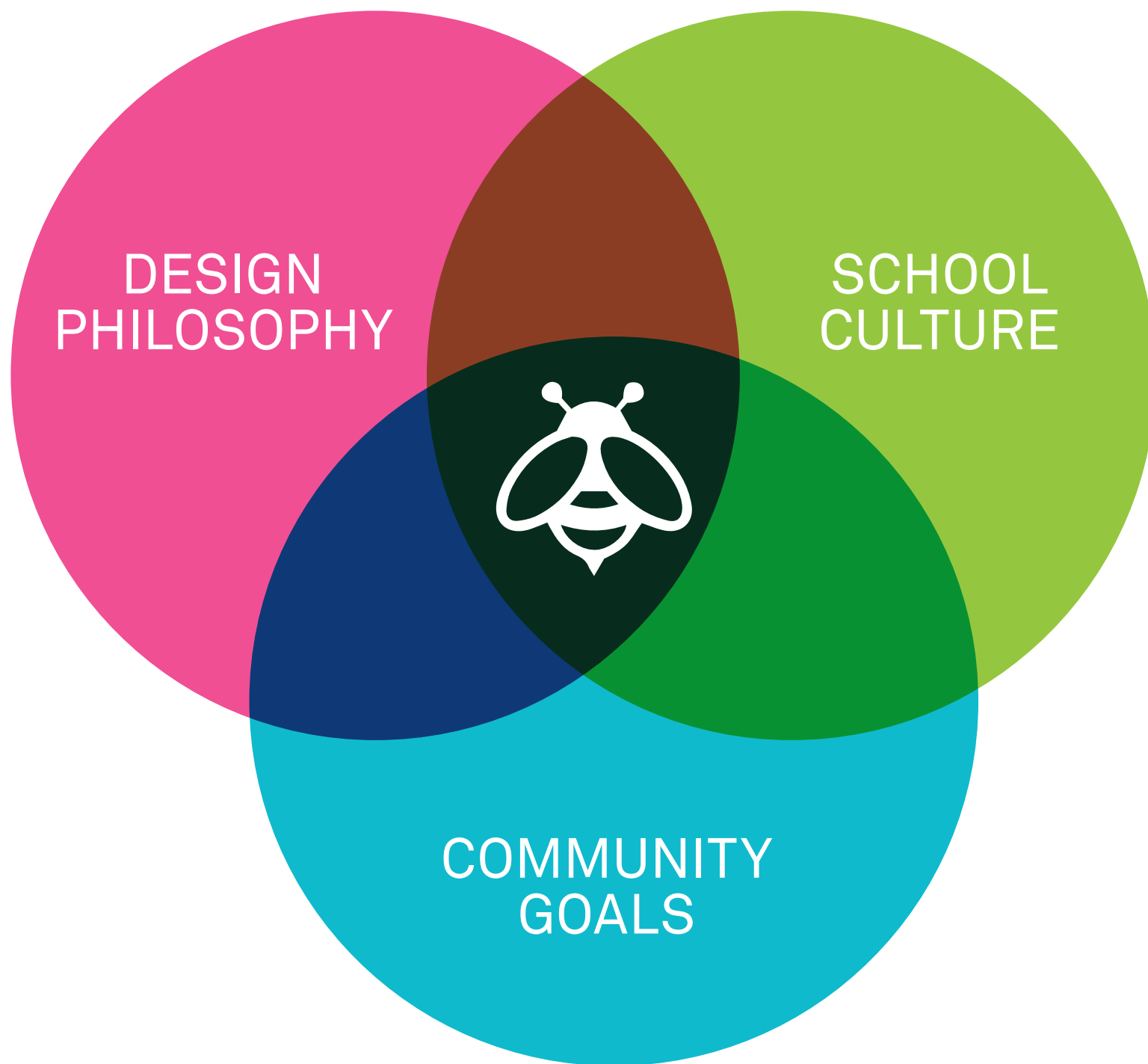
Jennifer Buller

Principal
Coolidge Corner School



David O'Hara

Principal
Coolidge Corner School





Learning is
not the same
for every child





The Coolidge Corner Neighborhood

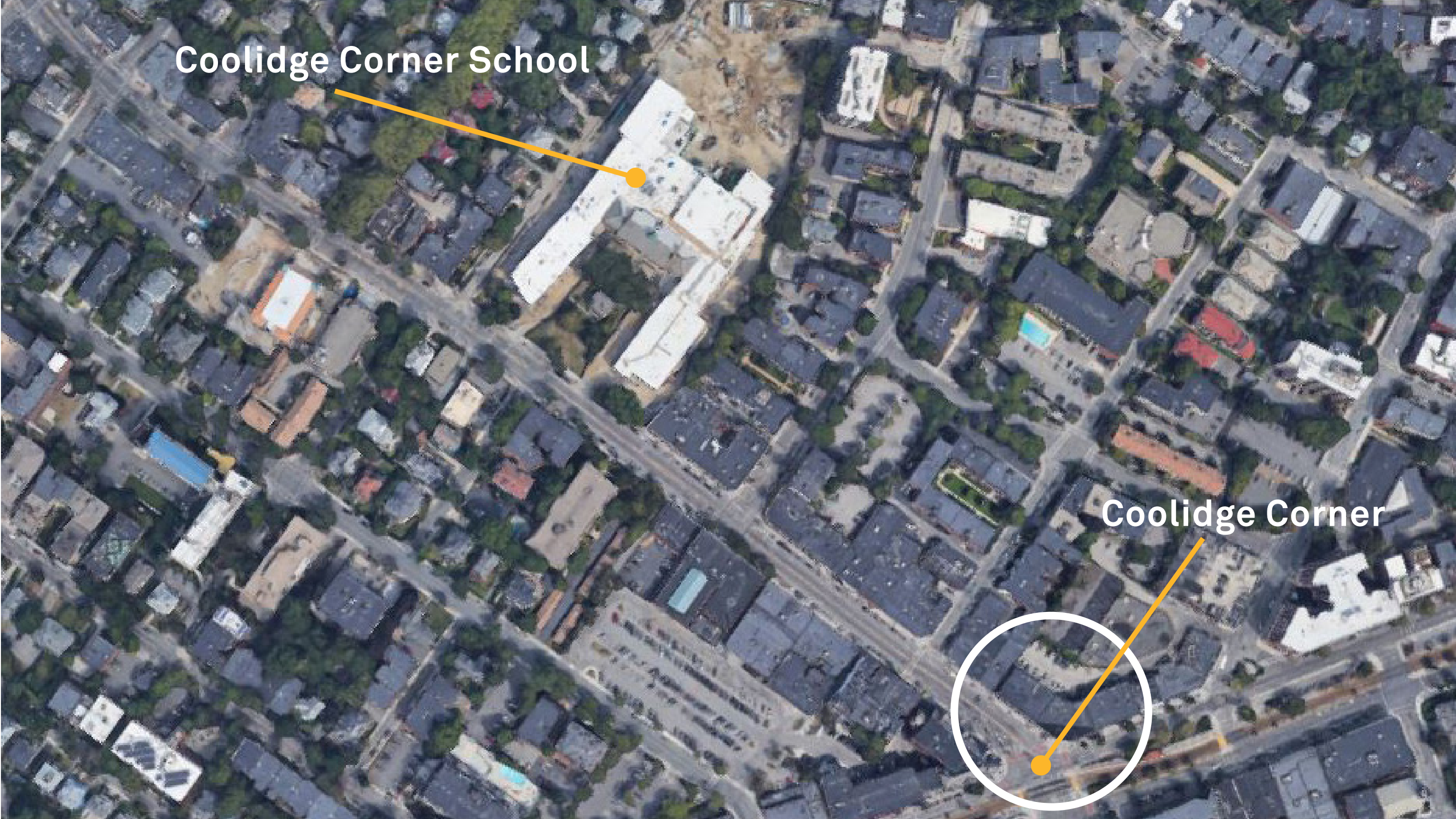




RESIDENT PERMIT
PARKING AREA
No Daytime Parking
in Excess of 2 Hours
Without Permit
Other Restrictions
Apply

Coolidge Corner School

Coolidge Corner





EDWARD DEVOTION HOUSE/
BROOKLINE HISTORICAL SOCIETY

UNDEFINED CONCRETE
PLAZA WITH SANDBOX

STEDMAN STREET

UNSUITABLE TURF CONDITIONS

PLAY FIELDS BISECTED
BY RETAINING WALL AND
PLANTING

COMMUNITY
BASKETBALL COURTS

COMMUNITY PATH

COMMUNITY PATH

DEGRADED BALL FIELDS

UNDEFINED ASPHALT
PLAY AREA

INACCESSIBLE
STRUCTURED
PLAY AREA

EXISTING
COMMUNITY
LAWN

INACCESSIBLE
MAIN ENTRANCE

HISTORIC OAKS

Where we started





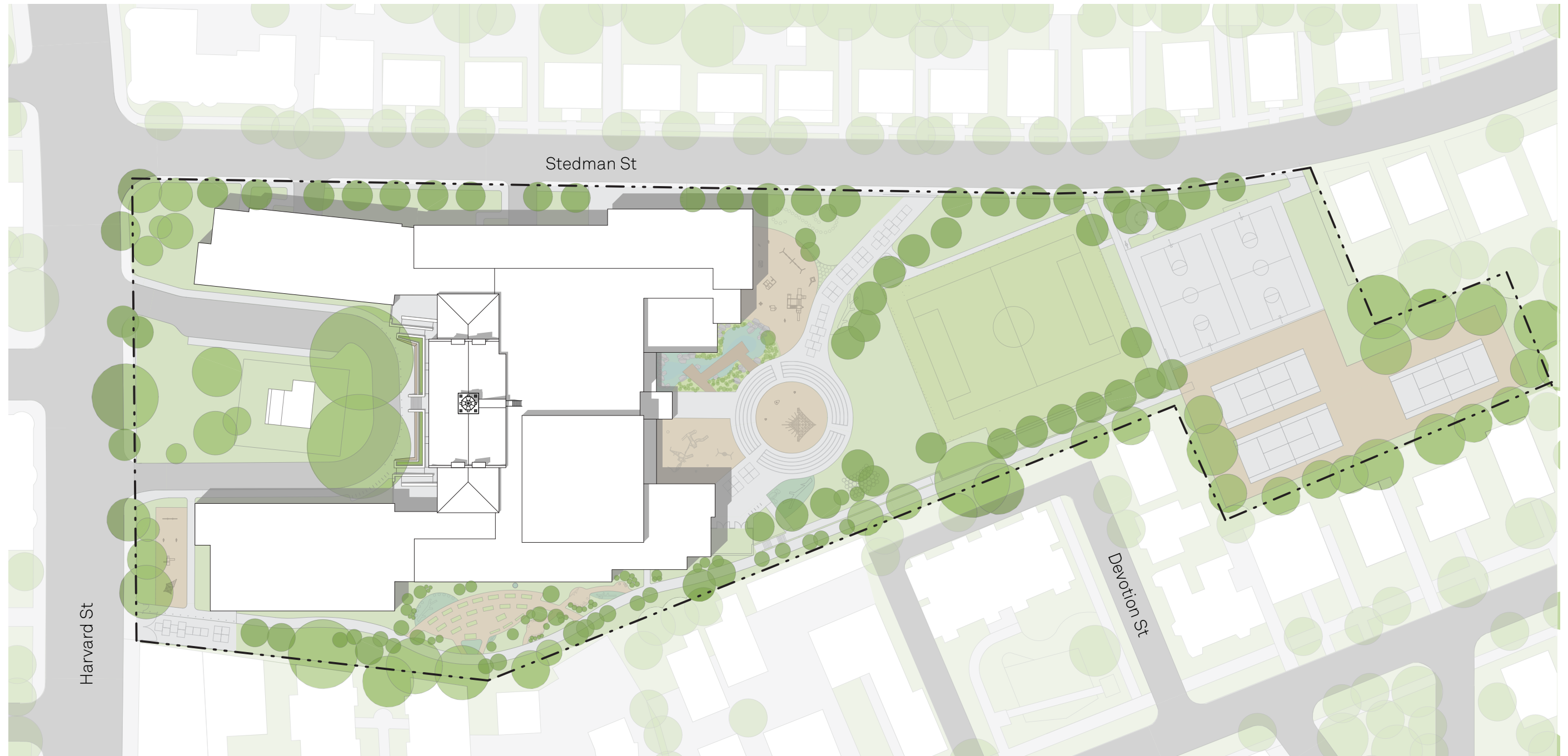






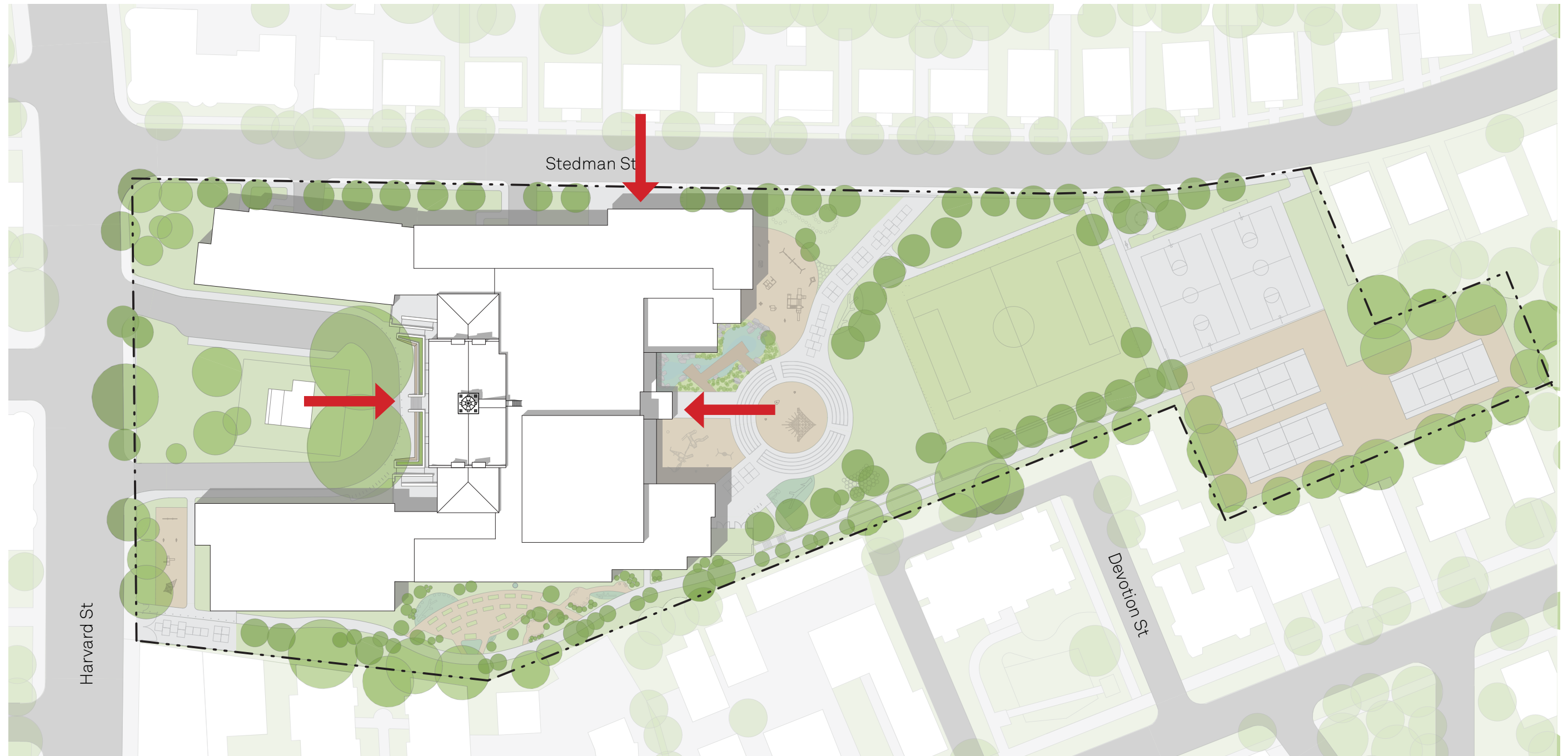
The Organizing Concept:

central, shared spaces with academic wings



The Organizing Concept:

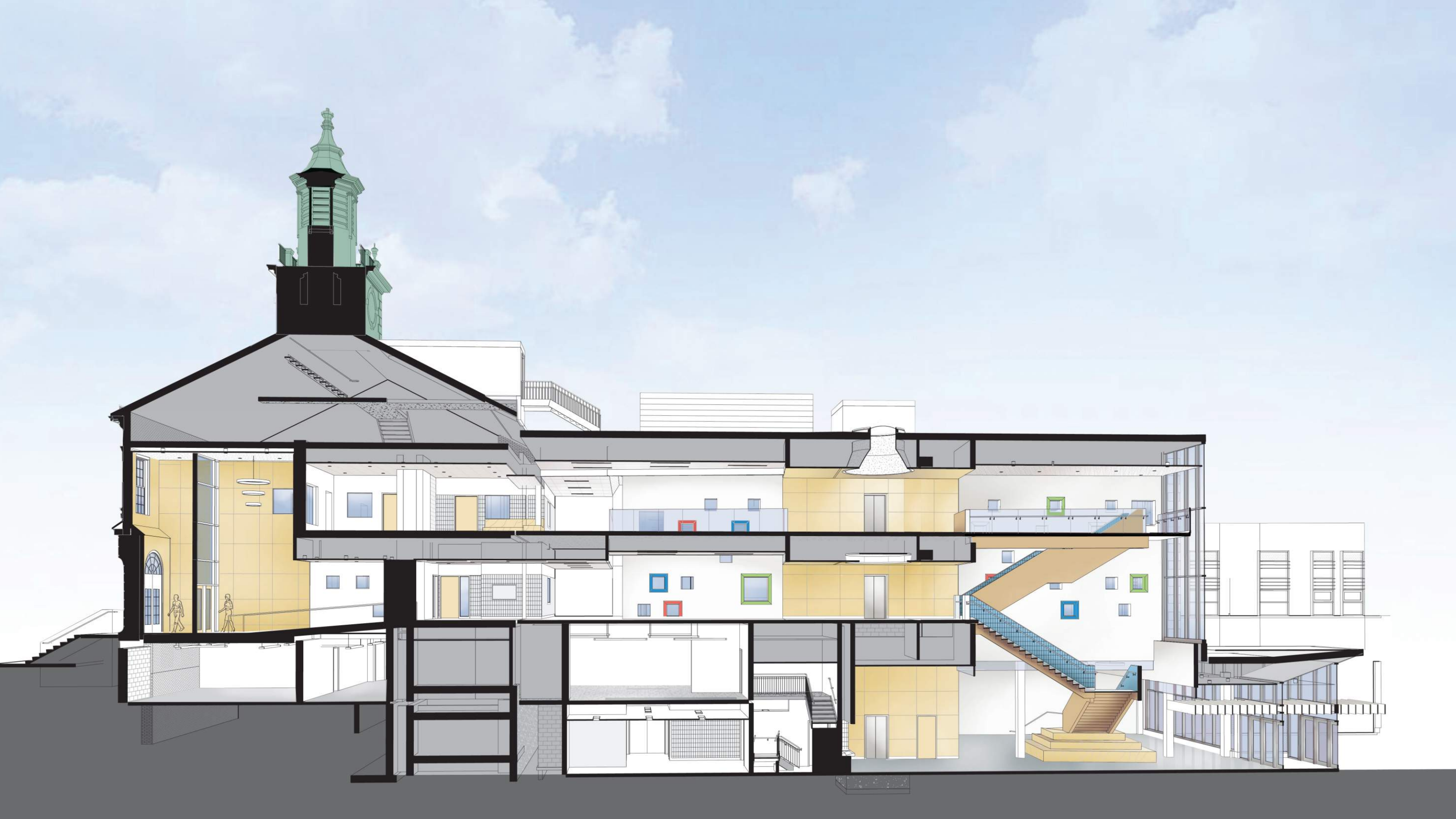
central, shared spaces with academic wings









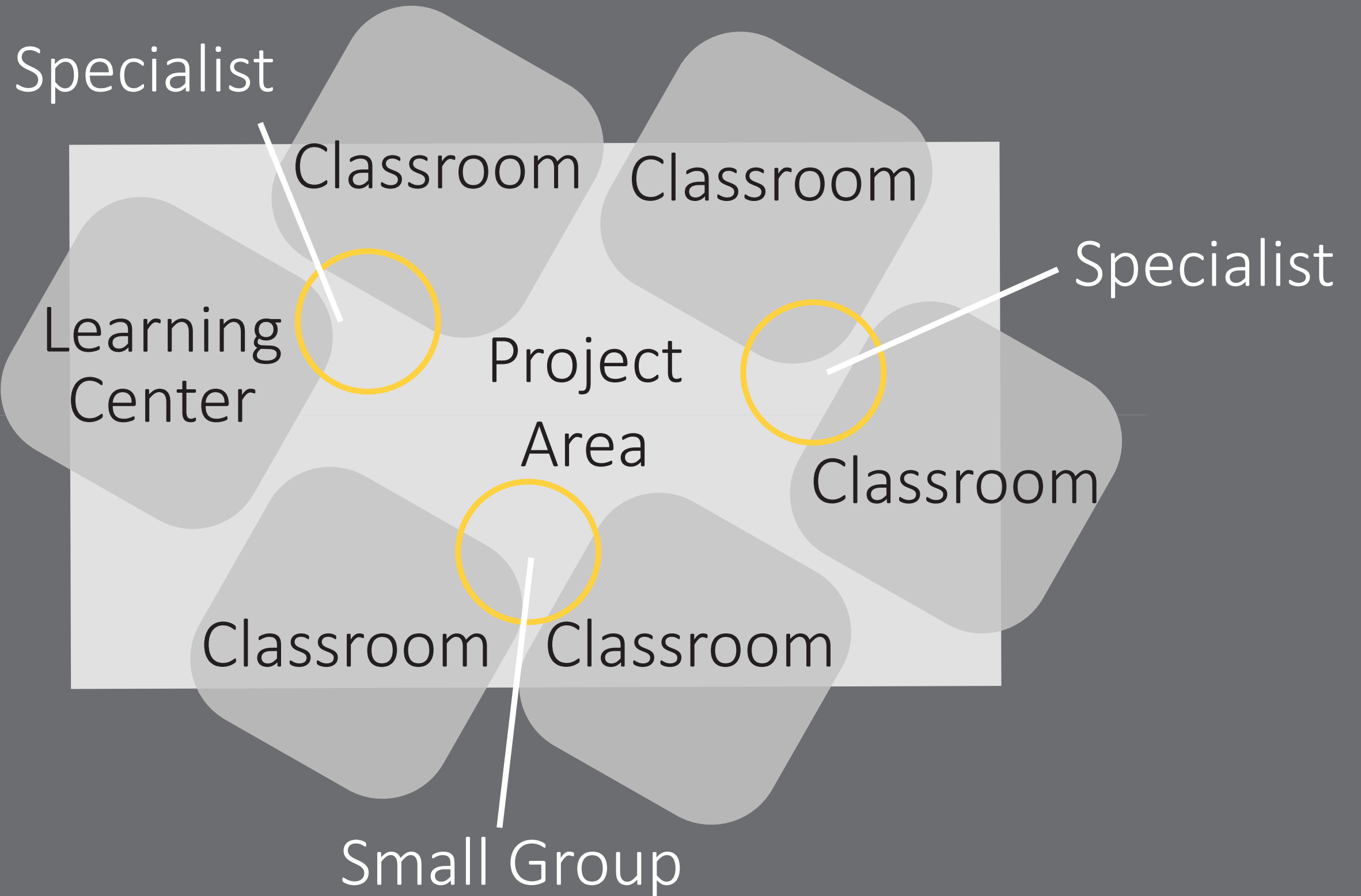


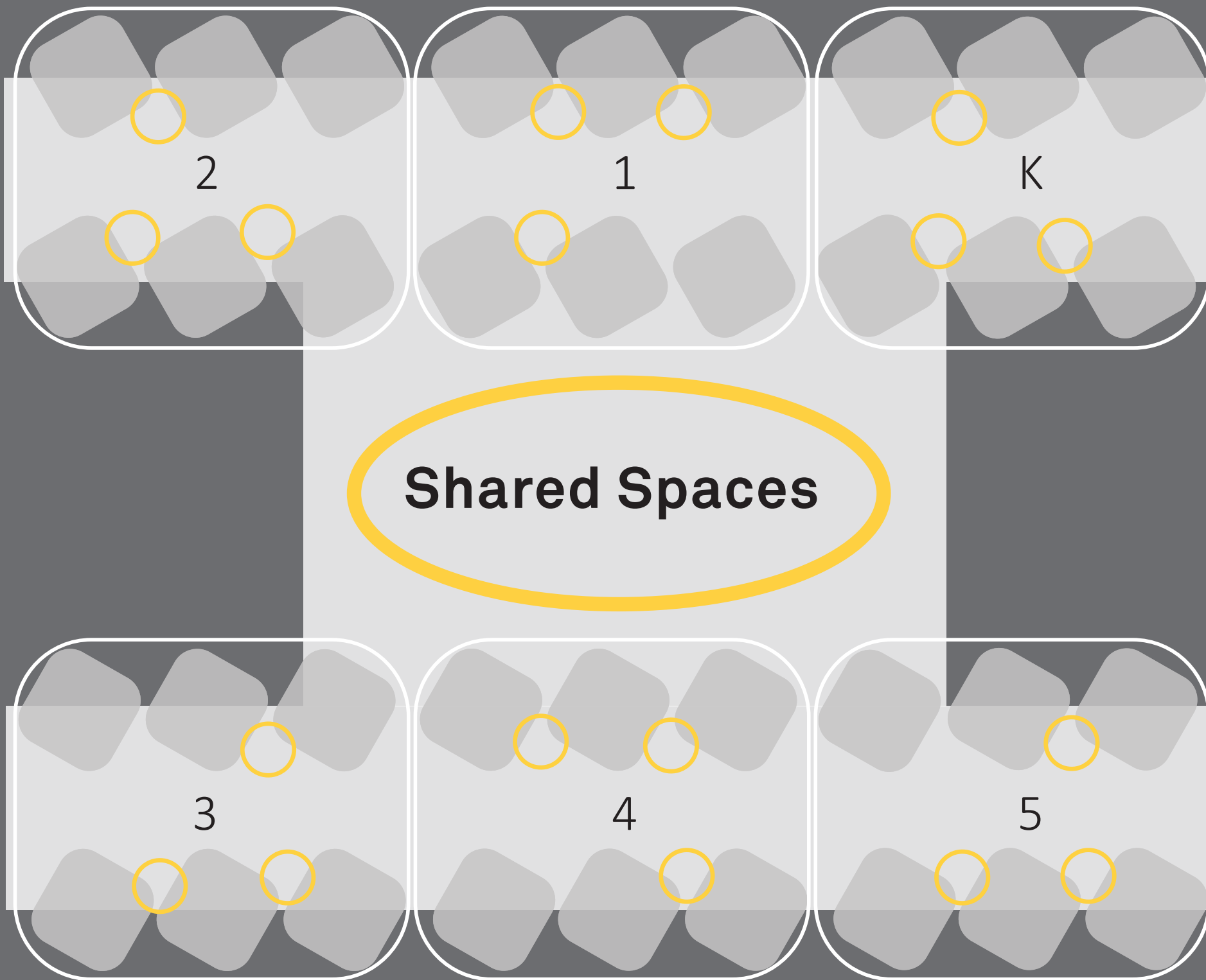












2nd Floor



Academic Neighborhoods



Classrooms



Specialty Spaces



Project Areas & Small Group Rooms





Informal Social Areas

Outdoor Classrooms



Connecting with History



Light, Transparency, Color





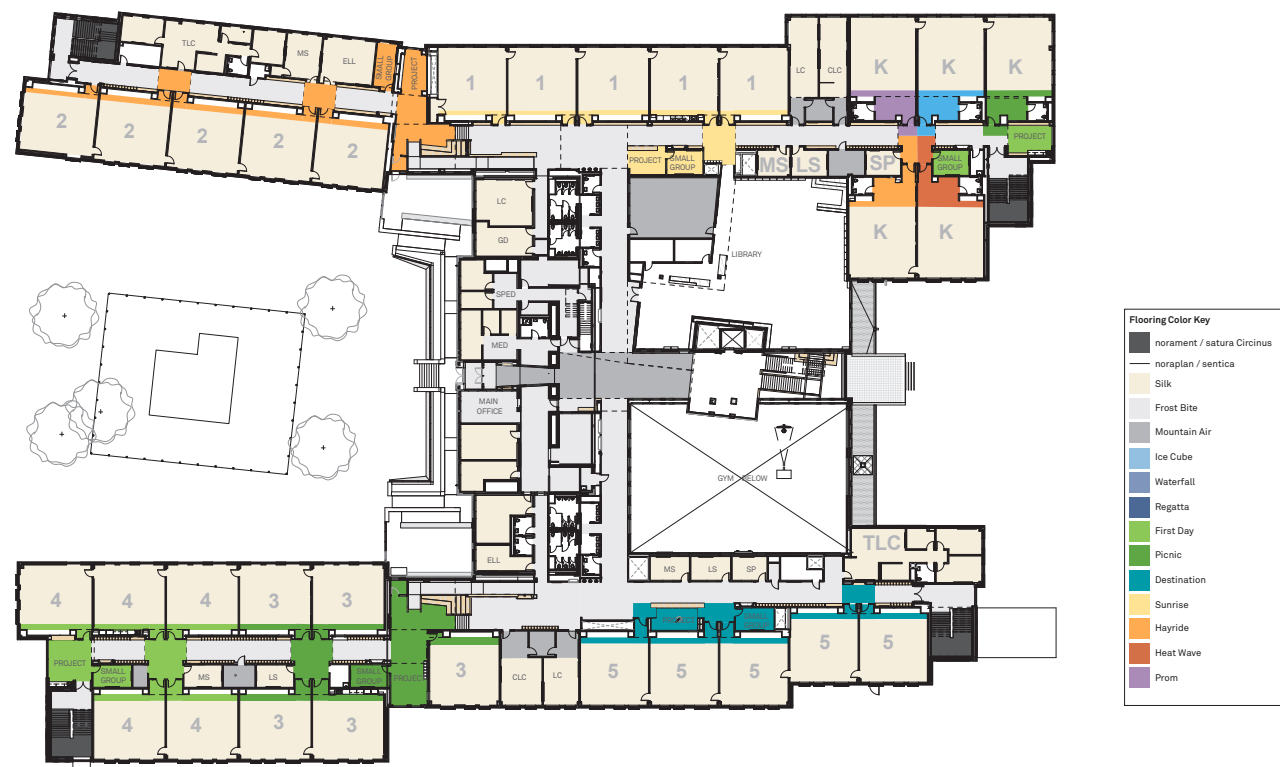












Skills needed to Succeed in the 21st Century



CRITICAL THINKING



CREATIVITY



COMMUNICATION



COLLABORATION

Source: National Education Association, "Preparing 21st Century Students for a Global Society, An Educator's Guide to the 'Four Cs'"



LifeinSecondGrade

@MrLipton2L

Follow



Beautiful weather means we can sit outside during writer's workshop to write!



10:21 AM - 8 Nov 2018





CCS Library & Tech
@CCSLibTech

Follow



PreK friends visited the library for storytime and a tour today. They loved the view over the playground!



5:17 PM - 4 Dec 2018

2 Retweets 8 Likes



1

How can we
create an outdoor
environment that
encourages
important skills?



CRITICAL THINKING

2

Which design elements
can help improve
students' well-being &
performance?



CREATIVITY

3

How could site design
better address age
specific needs and be
more inclusive?



COMMUNICATION



COLLABORATION



Play is **not** the
same for every
child



What are the benefits of play?

- More than physical activity
- Developmental
- Emotional
- Social



What are the benefits of connecting with Nature?

- Well Being
- Inspiration
- Experiential Learning
- Biophilia, The human bond with other species. (Edward O. Wilson, 1984)



EDWARD DEVOTION HOUSE/
BROOKLINE HISTORICAL SOCIETY

GARAGE ENTRANCE/ EXIT

STEDMAN STREET

ARRIVAL AREA

RAIN GARDEN
PRE-K/ K PLAY
AREA

PAVEMENT WITH
PLAY MARKINGS
U-10 SOCCER FIELD

WATER PLAY
COMMUNITY
BASKETBALL COURTS

HARVARD STREET

1913 BUILDING TO BE
RENOVATED

EXISTING BUILDING TO BE
DEMOLISHED

COMMUNITY PATH

GENTLE MOUNDS

NATURAL PLAY
LOWER GRADE PLAY AREA
UPPER GRADE PLAY AREA

DEVOTION STREET

COMMUNITY PATH

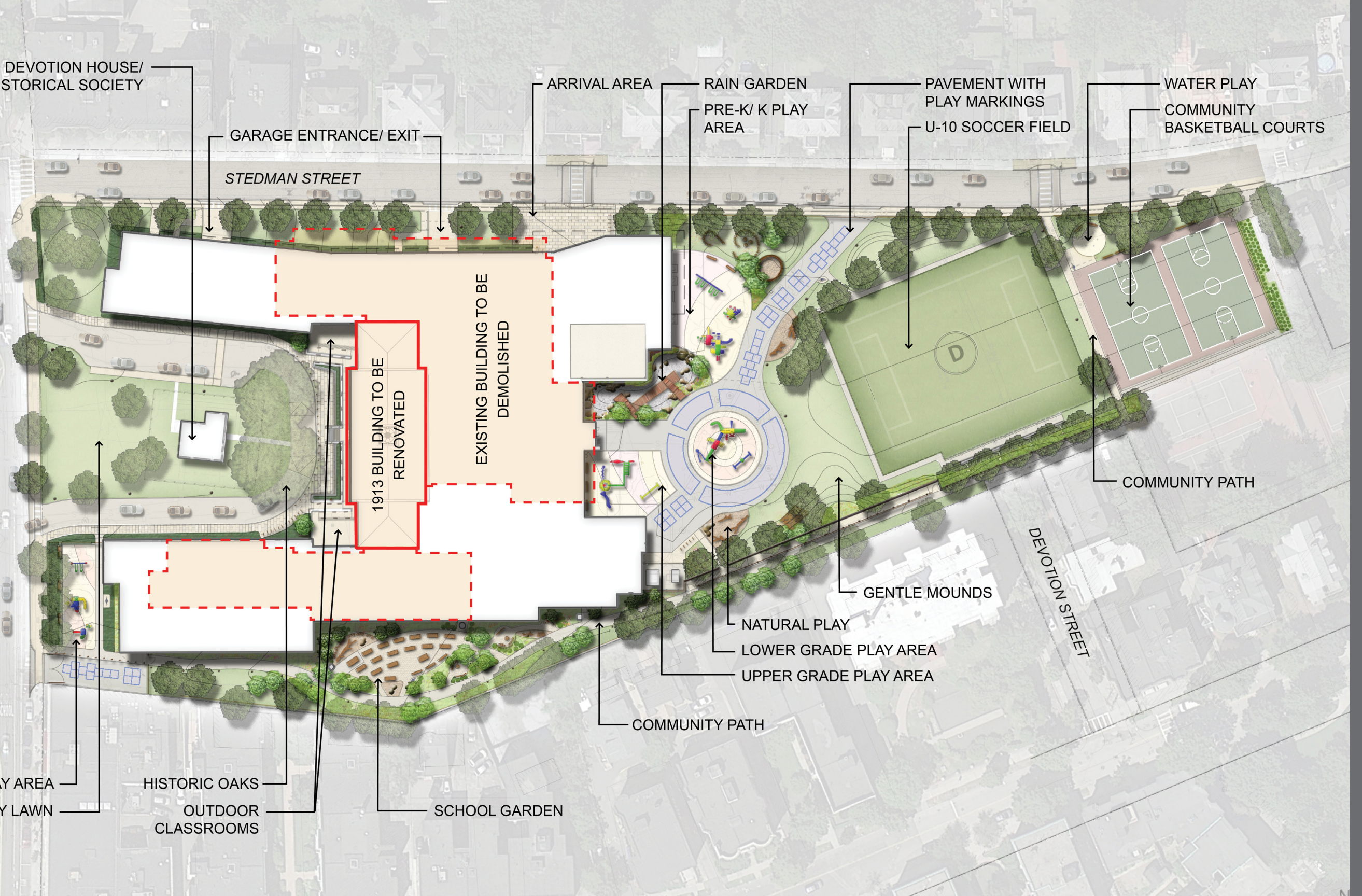
PLAY AREA

COMMUNITY LAWN

HISTORIC OAKS

OUTDOOR
CLASSROOMS

SCHOOL GARDEN



CONNECTING WITH HISTORY

STEDMAN STREET

HARVARD STREET

RAIN GARDEN

ACCESSIBLE,
AGE APPROPRIATE,
STRUCTURED PLAY

NATURAL PLAY

ATHLETICS

DEVOTION STREET

NATURE POD

STRUCTURED PLAY

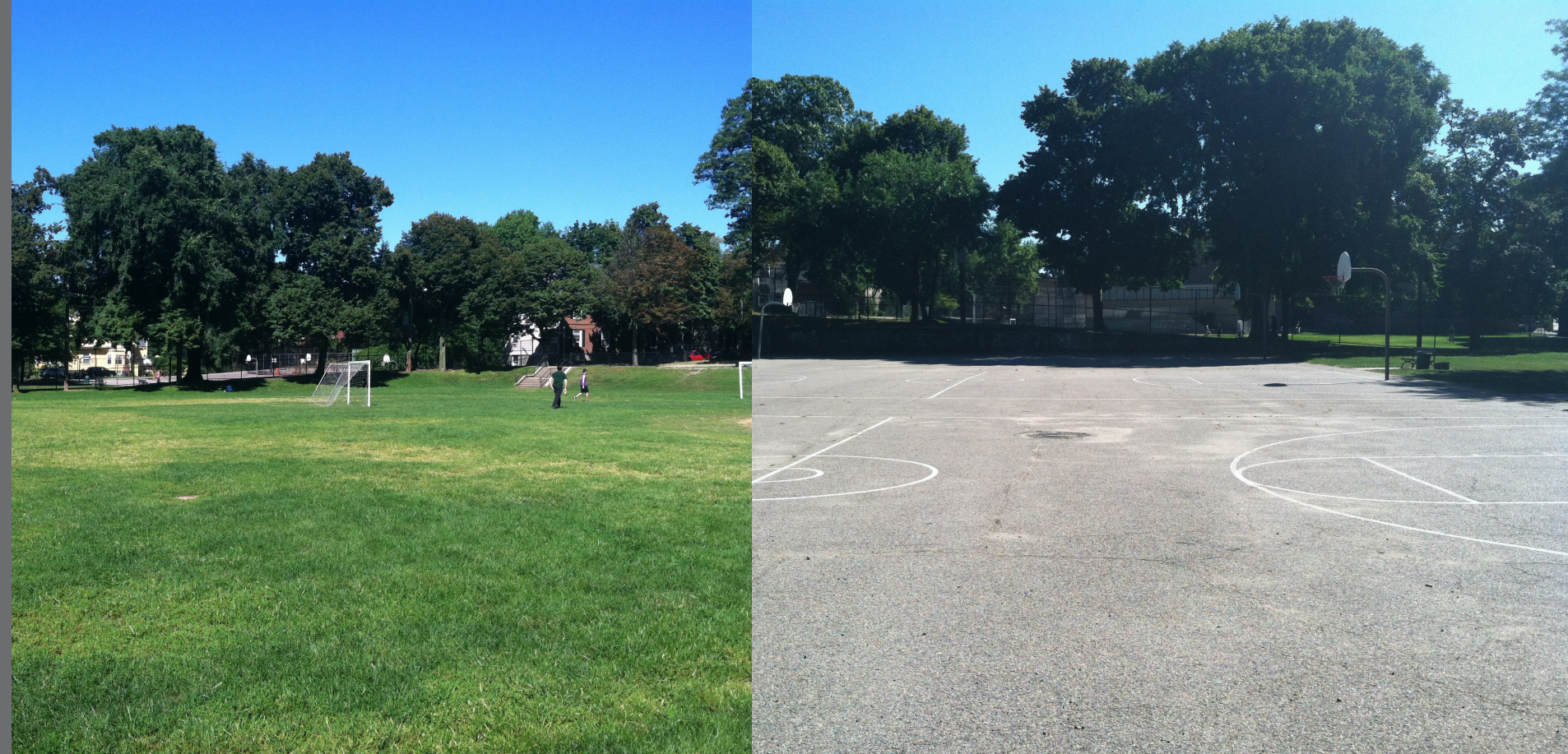
SCHOOL GARDEN

KEY

- OUTDOOR CLASSROOM
- STRUCTURED PLAY
- NATURAL PLAY
- ATHLETICS

Existing Play

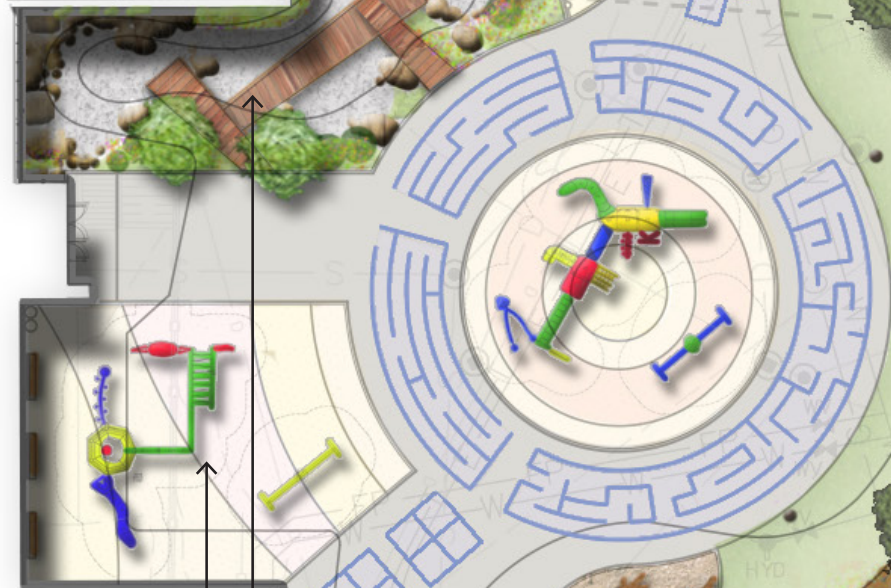
- Disconnected across site
- Topographical separations
- Not accessible



Integrated Learning and Play Area



SPIRAL LOGS
DIGGING POD
FIRE LANE WITH
MARKINGS FOR PLAY



STRUCTURED PLAY

COMMUNITY
COURTS
WATER PLAY
SYNTHETIC
TURF FIELD WITH
COCONUT INFILL

Integrated Play/ Learning Plan

DEVOTION STREET



North View

Can design help teach environmental literacy?

- Sustainability
- Conservation
- Resilience
- Stewardship



Rain Garden Plan



Learning Opportunities

- Natural systems/
the Water Cycle
- Sustainable Design
- Soil Function
- Plant Filtration
- Pollinator Attraction



Rain Garden



Rain Garden and Cafeteria beyond





View from Cafeteria



Coolidge Corner School @TheHiveInCC · 18 Sep 2018



We are loving watching the water pour from our roof tops to fill our rain garden with water on this super rainy day! 💧



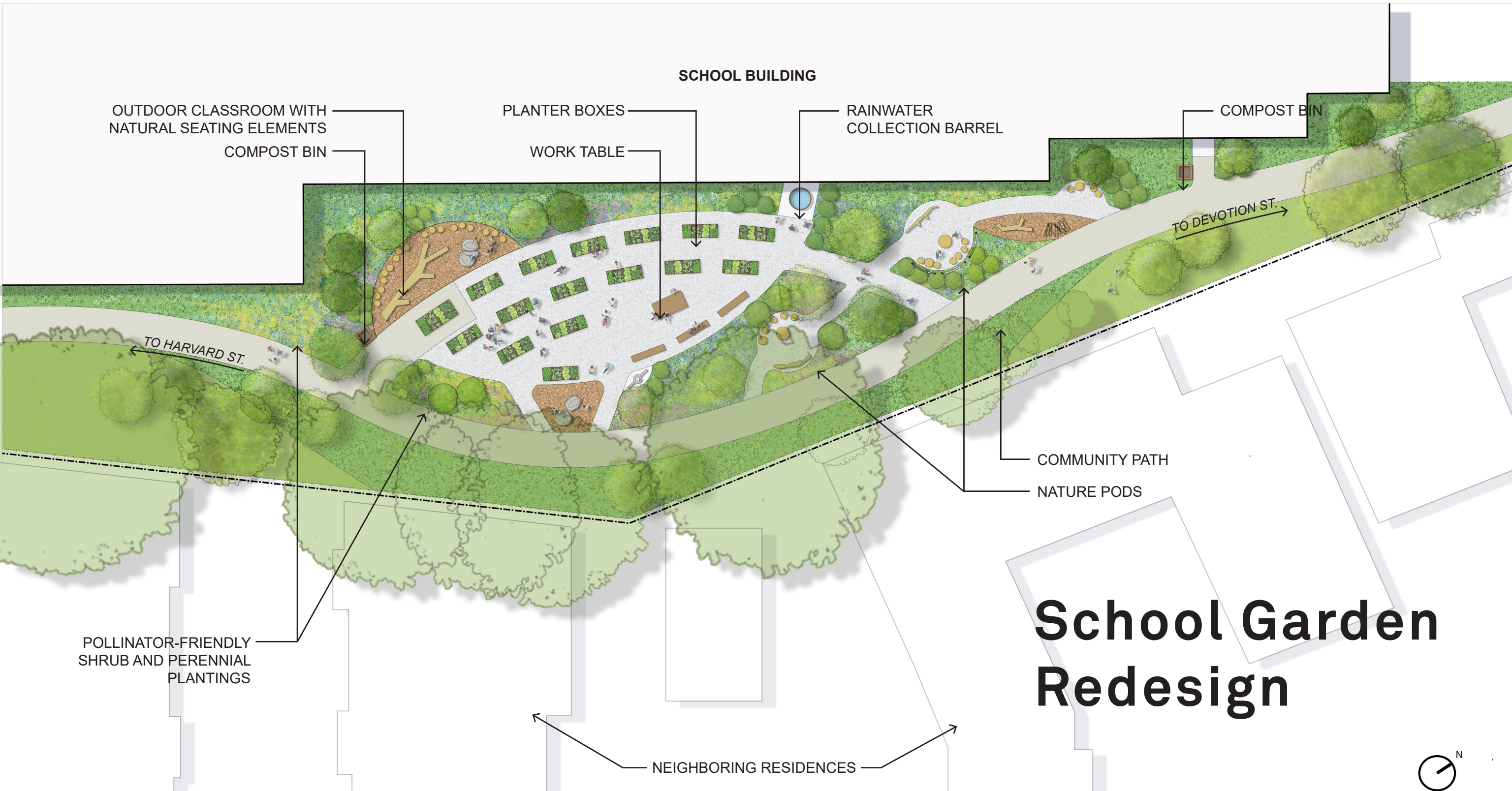
School Garden:

Existing
Conditions





Pre-Construction Play Conditions



SCHOOL BUILDING

OUTDOOR CLASSROOM WITH
NATURAL SEATING ELEMENTS

COMPOST BIN

PLANTER BOXES

WORK TABLE

RAINWATER
COLLECTION BARREL

COMPOST BIN

TO DEVOTION ST.

TO HARVARD ST.

COMMUNITY PATH

NATURE PODS

POLLINATOR-FRIENDLY
SHRUB AND PERENNIAL
PLANTINGS

NEIGHBORING RESIDENCES

School Garden Redesign





Classroom View of the School Garden



Fall Planting



Vision for Nature Pod



School Garden

- Food growing areas
- Seating/Outdoor classroom
- Habitat areas
- Permaculture
- Pollinator shelters
- Native trees for attracting birds
- Immersion in nature





· Aug 10



We ❤️ the thoughtful design and beauty of our garden! This log from the site shows the markings of a beetle that made its way through the tree. The pattern is repeated in the flowers planted behind it! We wonder what other patterns in nature our students will uncover here.



Analysis of 10 Outdoor Spaces

- 1 PLAY STRUCTURES
- 2 TURF FIELD
- 3 BASKETBALL COURTS
- 4 WATER PLAY
- 5 SPIRAL STUMPS
- 6 DIGGING AREAS
- 7 RAIN GARDEN
- 8 SCHOOL GARDEN
- 9 NATURE PODS
- 10 OUTDOOR TERRACES



EDWARD DEVOTION HOUSE/
BROOKLINE HISTORICAL SOCIETY

GARAGE ENTRANCE/ EXIT

STEDMAN STREET

ARRIVAL AREA

RAIN GARDEN
PRE-K/ K PLAY
AREA

PAVEMENT WITH
PLAY MARKINGS
U-10 SOCCER FIELD

WATER PLAY
COMMUNITY
BASKETBALL COURTS

HARVARD STREET

1913 BUILDING TO BE
RENOVATED

EXISTING BUILDING TO BE
DEMOLISHED

COMMUNITY PATH

GENTLE MOUNDS

NATURAL PLAY
LOWER GRADE PLAY AREA
UPPER GRADE PLAY AREA

DEVOTION STREET

COMMUNITY PATH

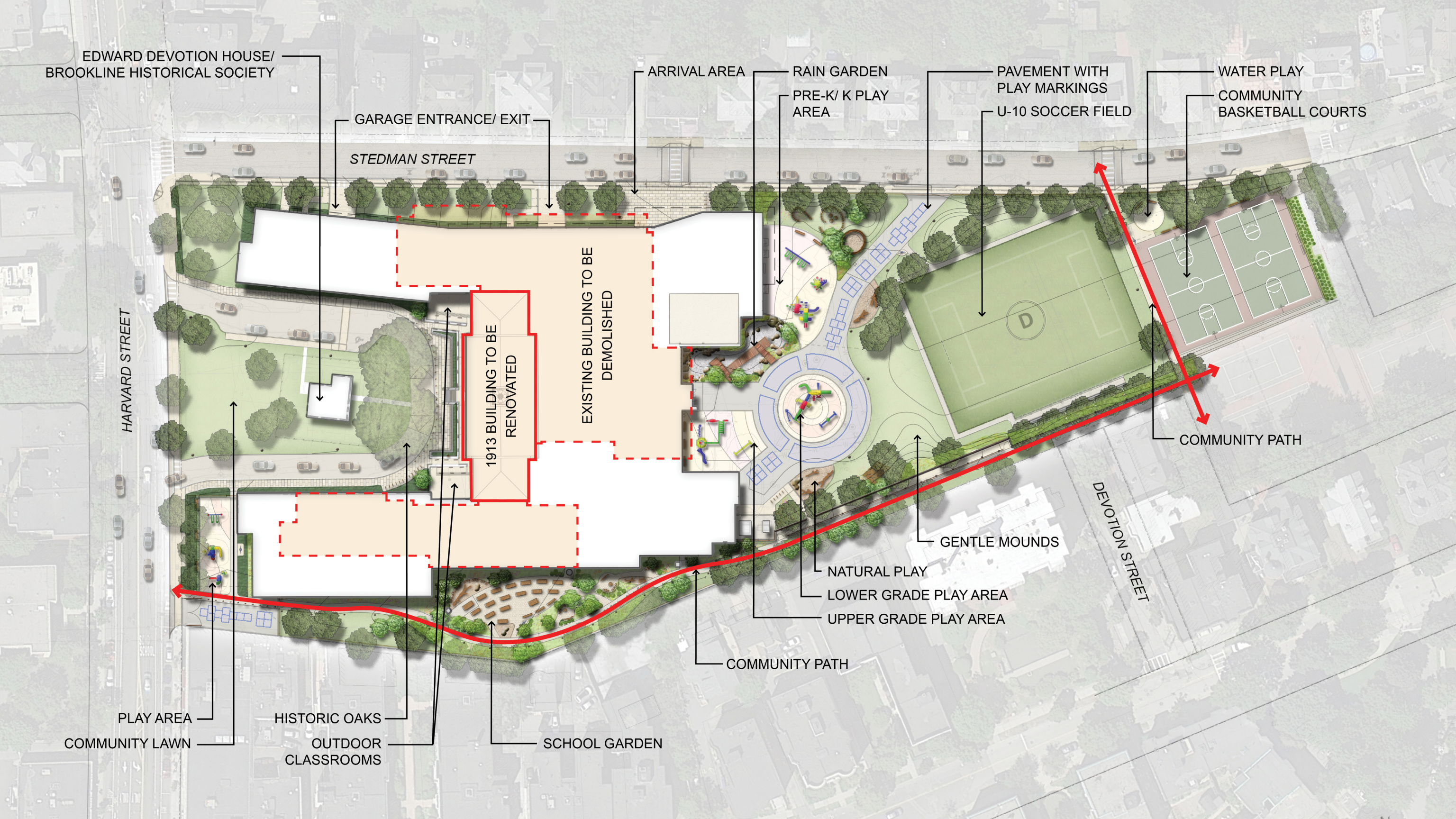
PLAY AREA

HISTORIC OAKS

SCHOOL GARDEN

COMMUNITY LAWN

OUTDOOR
CLASSROOMS









Community Path





Evening Community Destination

EDWARD DEVOTION HOUSE/
BROOKLINE HISTORICAL SOCIETY

GARAGE ENTRANCE/ EXIT

STEDMAN STREET

ARRIVAL AREA

RAIN GARDEN
PRE-K/ K PLAY
AREA

PAVEMENT WITH
PLAY MARKINGS
U-10 SOCCER FIELD

WATER PLAY
COMMUNITY
BASKETBALL COURTS

HARVARD STREET

1913 BUILDING TO BE
RENOVATED

EXISTING BUILDING TO BE
DEMOLISHED

COMMUNITY PATH

GENTLE MOUNDS

NATURAL PLAY
LOWER GRADE PLAY AREA
UPPER GRADE PLAY AREA

DEVOTION STREET

COMMUNITY PATH

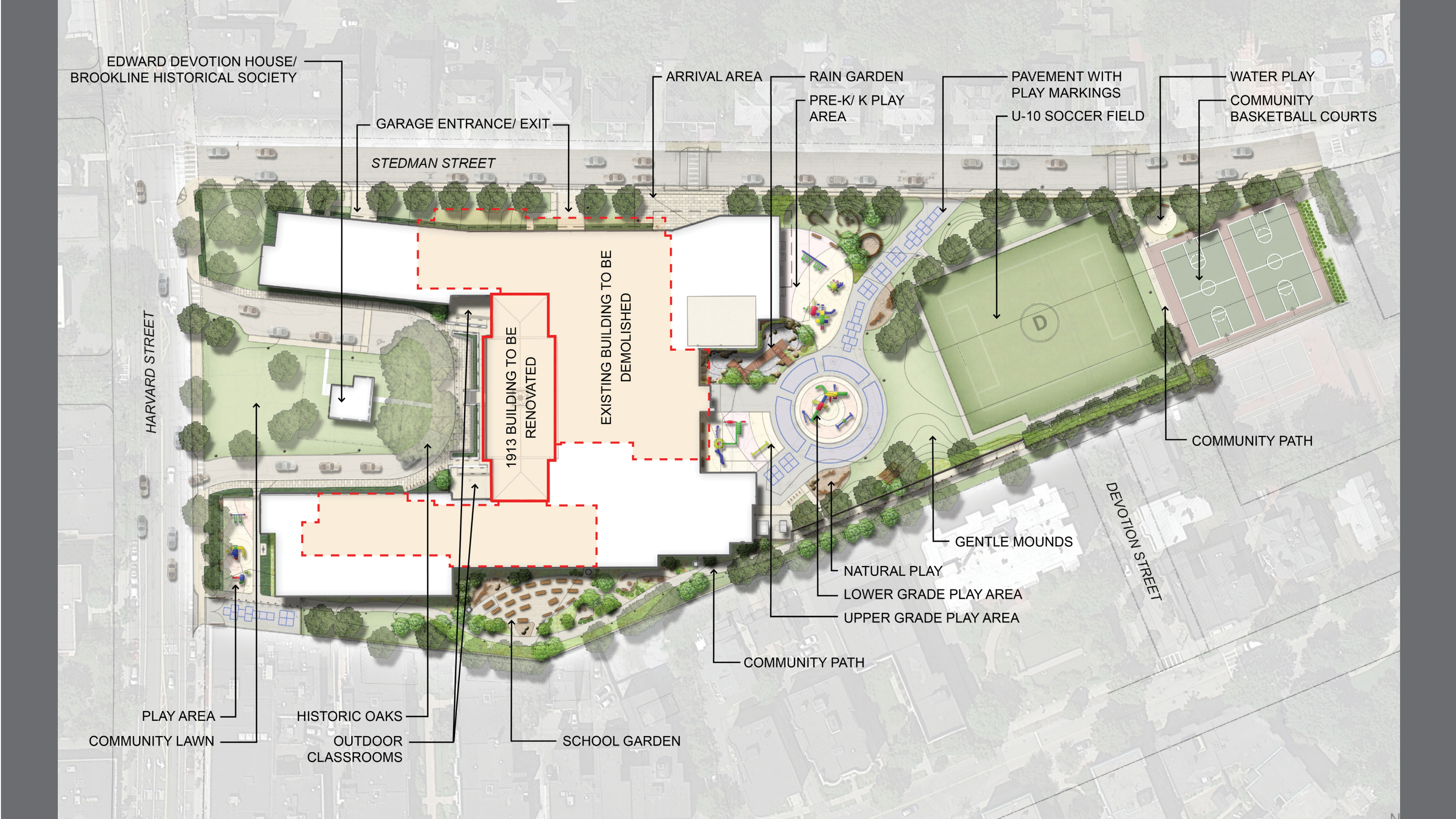
PLAY AREA

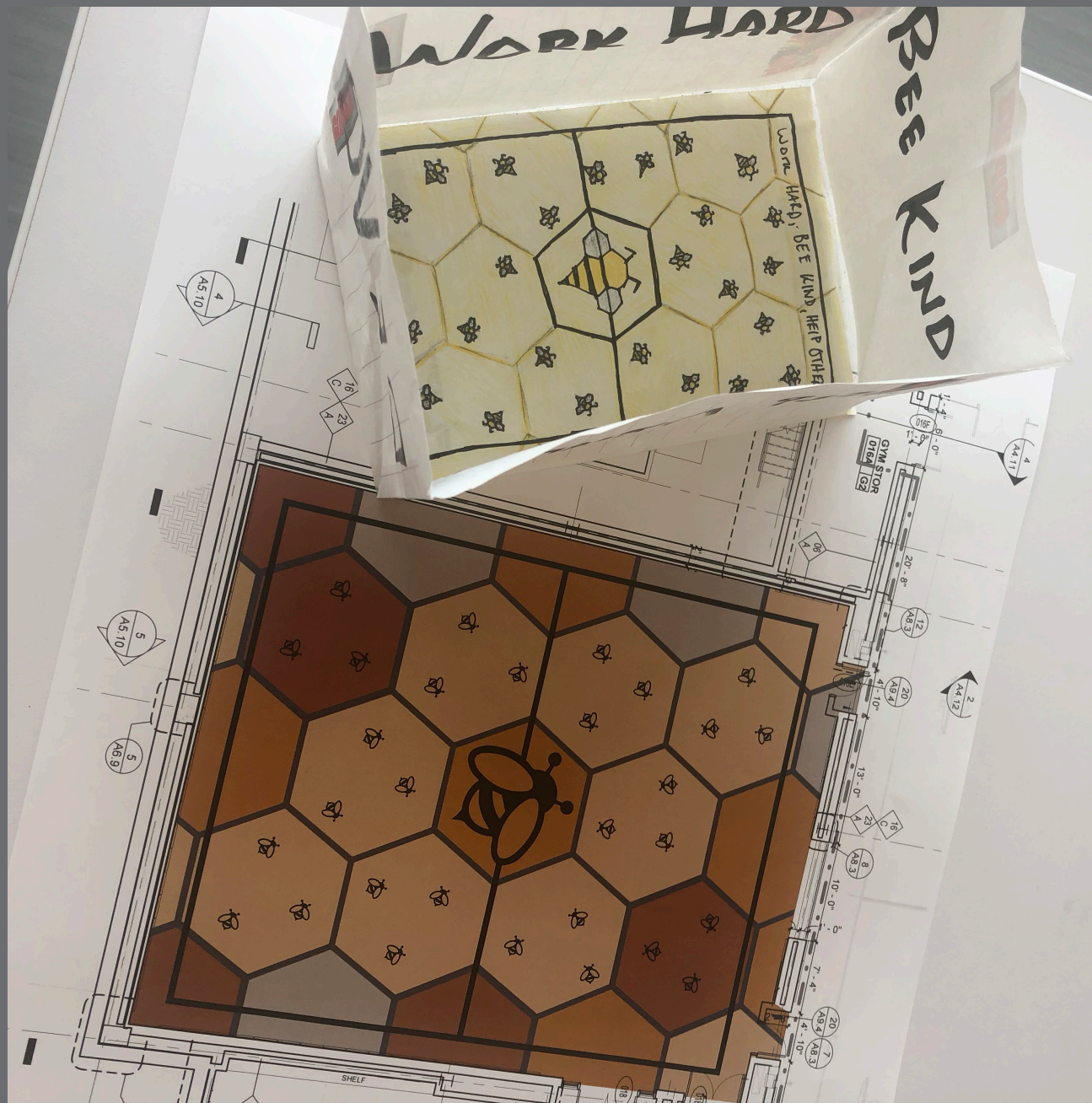
COMMUNITY LAWN

HISTORIC OAKS

OUTDOOR
CLASSROOMS

SCHOOL GARDEN







Expectation



Reality

