



# SCHOOL BUILDING & CITIZENSHIP

A4LE Northeast |  
AIA CAE  
April 12, 2018  
10:15am

# AGENDA

Topic Introduction

Panel Member Contextual Stories

Moderator Q&A

Audience Q&A

Wrap Up



How can school facilities be leveraged as broader community assets to enhance citizenship?

How can the process of planning, designing, and building school facilities be leveraged to enhance citizenship?

# SCHOOL BUILDING & CITIZENSHIP

Topic  
Introduction

# LEARNING OBJECTIVES

- Participants will be able to describe the fundamental concepts of cultivating citizenship
- Participants will be able to describe strategies for utilizing the planning, design, and construction process to bring together a community
- Participants will be able to describe best practices for designing school facilities to foster student engagement and cultivate citizenship
- Participants will learn case study examples of innovative practices for planning and designing facilities that support broader community needs

**DAVID LEVER, R.A.,  
D.A.**  
Educational Facilities  
Planning LLC

**SARAH WOODHEAD,  
AIA, NCARB**  
DLR Group

**MILTON NAGEL, CPA**  
Caroline County Public  
Schools (MD)

———— **PANEL** ————

**SCHOOL BUILDING  
& CITIZENSHIP**

Beth Penfield, ALEP  
Brailsford &  
Dunlavy  
MODERATOR

*A “government resting upon popular suffrage cannot be successful unless those who elect and who obey their governors are educated.”*

John Dewey, *Democracy and Education*, 1916

*“Upon our educational system must largely depend the perpetuity of those institutions upon which our freedom and our security rest. To prepare each citizen to choose wisely and to enable him to choose freely are paramount functions of the schools in a democracy.”*

Franklin D. Roosevelt, “Message for American Education Week”, 1938

# DEMOCRACY & EDUCATION

Dr. David  
Lever

# DEMOCRACY & EDUCATION

***“formal democratic institutions are not enough for the survival of self-governance; we also need a citizenry equipped to grapple with important moral questions.”***

***“Putting Democracy Back into Public Education”***

***Richard D. Kahlenberg & Clifford Janey, The Century Foundation, November 10, 2016***

## ***“Explicit Curriculum”:***

- Revitalized civics/history courses, honest discussion of the American story
- The perils of non-democratic forms of government
- Debate on issues of importance
- Community service requirements

## ***“Implicit Curriculum”:***

- Integration: socioeconomic, racial, ethnic
- Equitable access to educational opportunity
- Parents and community members are involved in decision-making
- Teachers have influence in policies and practices

***IN ADDITION: SCHOOL CLIMATE, INCLUDING THE SCHOOL FACILITY***



# THE PLANNING AND DESIGN PROCESS

## ➤ **Explicit Curriculum Opportunities:**

- Illustrate decision-making in government
- Understand the importance of funding and financing
- Debate opportunities:

*How can student government be made visible in the design?*

*How does design impact the environment?*

*How can community needs be incorporated into the design?*

- Service opportunities: A plan for student involvement in caring for the facility

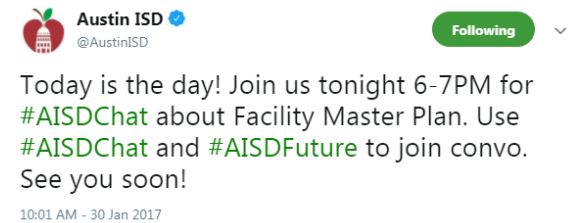




# THE PLANNING AND DESIGN PROCESS

## ➤ Implicit Curriculum Opportunities:

- Educational specification process includes all stakeholders
- Community outreach process: meetings, survey, website
- Design review process
- Post-occupancy evaluation process



**#AISDFuture #AISDChat**

**Q2:** What do you think of as an example of a modernized school or modern learning space?



Twitter Town Hall

Town Hall

# THE BUILDING DESIGN

## ➤ **Explicit Curriculum Opportunities:**

- Venues for debate and discussion
- Community service spaces

## ➤ **Implicit Curriculum Opportunities:**

- All curricular opportunities: visible, accessible to all
- Integration of special education
- Integration of magnet programs

**Schooling “*is the very foundation of good citizenship.*”**

*Brown v. Board of Education, 1954*

# CIVIC DESIGN AND CITIZENSHIP



***Scottsdale, Arizona - Civic Center Mall***



***Scottsdale City Hall  
Bennie M. Gonzales Associates, 1968***



# Caroline County, MD

Population: 33,900

Small, rural school system

10 schools, 5,600 students



## STORIES FROM A RURAL DISTRICT

Milton Nagel

# CAROLINE COUNTY

## Challenges

- Location:
  - Limited number of contractors and trade
  - Delaware firms do not need the Maryland work and/or do not want to spend the time becoming MBE certified.
- Prevailing wage requirements
- Limited State funds requires project durations to be extended which increases costs
- Impact of last recession: firms are not increasing workforces

# PRESTON ELEMENTARY

## Phased Occupied Renovation & Addition



- Preston: 560 residents – stabilized area
- Preston Area: 4,000 residents – non growth area
- Preston Elementary: State Rated Capacity 441 students

# PRESTON ELEMENTARY

## Opportunities

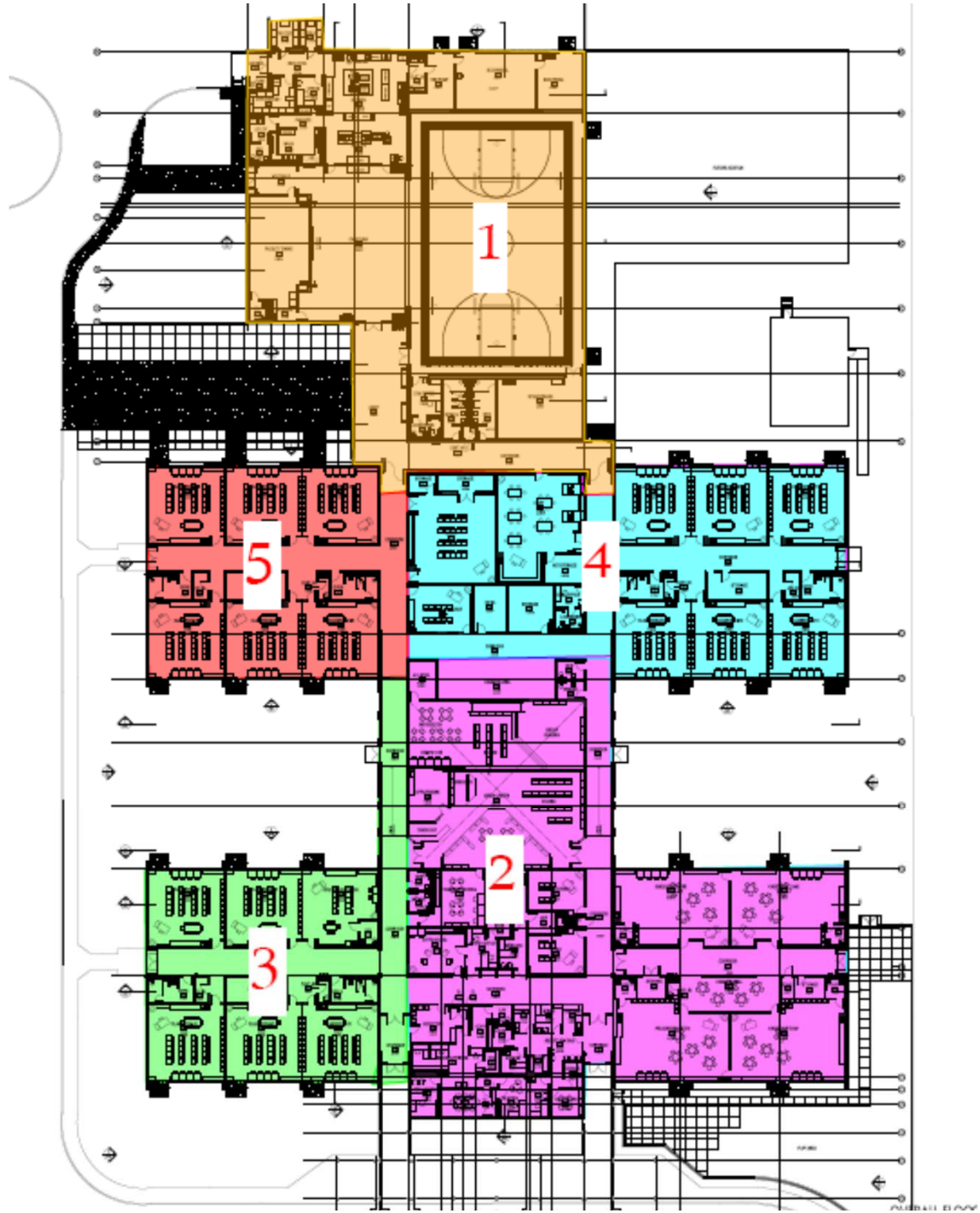
- During Planning & Design
- Building Design:
  - Construction of new gymnasium – partnership with Recreation and Parks
  - Construction of new wellness center – partnership with Choptank Community Health



# SCHOOL BUILDING & CITIZENSHIP



I-beam – signed by all students and staff at Preston Elementary, Board members, town and county Commissioners



# SCHOOL BUILDING & CITIZENSHIP



New gymnasium

# SCHOOL BUILDING & CITIZENSHIP



New cafeteria



common Shelters socioeconomic service influence precinct  
career enable civita sufficient discussion perpetuity institution Honest Integration voter system advocate importance question racism Economic making Social citizenry' productive policy change  
Teachers paramount function foundation  
school public civic justice  
freedom informed American democracy  
schooling citizenry government policy change  
equality resource wisely equity member newspaper practice library humanities decision  
equitable history educational justice  
community service  
equitable history educational justice  
school public civic justice  
freedom informed American democracy  
schooling citizenry government policy change  
equality resource wisely equity member newspaper practice library humanities decision  
equitable history educational justice  
community service  
equitable history educational justice  
school public civic justice  
freedom informed American democracy  
schooling citizenry government policy change  
equality resource wisely equity member newspaper practice library humanities decision

# STORIES FROM URBAN DISTRICTS

Sarah Woodhead

# ON A PERSONAL NOTE:





# Schools are:

Shelters

Polling Places

Summer Feeding Sites

Athletic Facilities

Libraries

Health Clinics

Job Training Centers

Food Banks

Childcare Centers

Social Hubs

Adult Ed Centers

Parks & Recreation  
Facilities





# HOW CAN A SCHOOL FOSTER CITIZENSHIP?

3 strategies:

**Welcome community** through the planning and design process; and by inviting them into the school;

**Strengthen teachers** by providing a building that is a resource; and by encouraging collaboration;

**Empower children** to be the agents of their learning by making school a safe, healthy, and child-centered place.



# EMPOWERING COMMUNITIES DURING PROJECT DEVELOPMENT

Arlington: BLPCs

DC Schools: SITs

PGCPS: Project Planning  
Committees

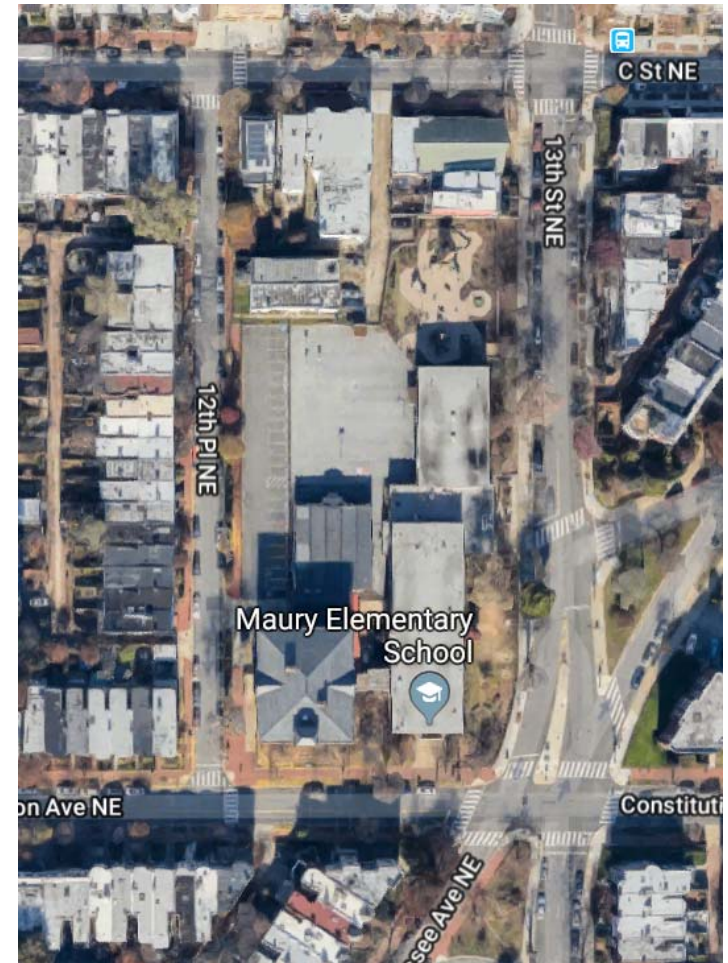
Formal to Informal



Fundamental Values:  
Meaningful  
Effective  
Inclusive



# CASE STUDY: MAURY ELEMENTARY SCHOOL WASHINGTON, DC







Maury Elementary School

## Level 1 Floor Plan

Kitchen + Support

Discovery Commons

PreK Neighborhood



Maury Elementary School

## OUTDOOR STUDIO

Planting Areas

Shade Element

Seating | Moveable

- Colorful elements
- Soft “mounds” for play
- Outdoor dry erase board





**IF YOU HAD TO  
CHOOSE BETWEEN  
COMPLIANT,  
ENGAGED, OR  
EMPOWERED, WHICH  
WORD WOULD YOU  
WANT TO DEFINE  
YOUR STUDENTS?**





# PANEL DISCUSSION

Beth Penfield  
Moderator