



# Neighborhood Watch: Designing for Community and Security in the Modern World

A4LE

*March 29, 2019*

**Portland Public Schools**

## **Harrison Lyseth Elementary School**

*Portland, Maine*



# TEAM



**Lenore Williams**

**PRINCIPAL-IN-CHARGE  
HARRISON LYSETH  
ELEMENTARY SCHOOL**



**Mark D. Lee,**  
AIA, LEED AP

**PRINCIPAL-IN-CHARGE  
ARCHITECT**



**Lisa D. Sawin,**  
AIA, MCPPO, LEED AP BD+C

**ASSOCIATE  
PROJECT MANAGER  
ARCHITECT**

# PROJECT CONTEXT

- Harrison Lyseth Elementary School
- Portland, ME
- 110 mi North of Boston





# PROJECT CONTEXT

- North Deering Neighborhood
- Shares Campus with Lyman Moore Middle School
- K-5
- 500+/- Students
- 1960
- 50,000 sf



# COMMUNITY



## Who is the Community?

- **Neighborhood**
- **Organization / Groups**
- **Parents / Families**
- **Teachers / Admin / Staff**
- **Students**

# COMMUNITY



## What makes a Neighborhood School?

- **Site Connections**
- **Location**
- **Campus Features**
- **Building Presentation**
- **Landscape**
- **Extracurricular Use of the Facility**
- **School Policy**

# COMMUNITY

## What makes a School a Community School?

- Transparency
- Welcoming Entrance
- Social Emotional Spaces
  - Nest
  - Cave
  - Watering Hole
  - Connections to Nature
  - Play Spaces
- Learning Occurs Everywhere
- Displays
- Grade-Level Community Nodes
- Culture
- Policy



# SAFETY/SECURITY

## Neighborhood Watch: Designing for Community and Security in the Modern World

- List 5 Safety/Security Strategies you believe are important in K-12 School Design

**HARRIMAN**

AIAA 2013 NORTHEAST REGIONAL CONFERENCE  
March 29, 2013

*Neighborhood Watch: Designing for Community and Security in the Modern World*

**List 5 Safety/Security Strategies you believe are important in K-12 School Design**

1. \_\_\_\_\_

2. \_\_\_\_\_

3. \_\_\_\_\_

4. \_\_\_\_\_

5. \_\_\_\_\_

ALBANY  
BOZEMAN  
PORTLAND  
PORTSMOUTH

[harriman.com](http://harriman.com)



# **SAFETY/SECURITY**

## **Community List**

Top strategies from group exercise

- **Visibility / Transparency / connectedness – strategic approach**
- **Single point of entry**
- **Welcoming / not prison feel**
- **Process of design / align with policy / align with first responders**
- **Pride of ownership / define public and private**
- **Social / emotional connectedness**
- **Layers of access control / visibility – cameras/ authorized access**
- **Feeling of safety**
- **Diversity of learning spaces**
- **Integrated communication plan**
- **Education around safety and security policy / features**
- **Place within the classroom that provides a sense of safety**
- **Design safety through architecture**

# SAFETY/SECURITY

## Security Strategies

Strategies Utilized in the Design of the Neighborhood School

- **Building Organization**  
(Private / Public / Vulnerable Areas)
- **Single Entrance**
- **Visibility**
- **Layers of Security**
- **Technology**
  - **Access Control**
  - **Communication**  
(Internal / External / Authorities)
  - **Cameras**
- **Site**
  - **Lighting**
  - **Barriers**
  - **Guiding Behaviors**
    - **Flow**
    - **Protected**
  - **Policy and Procedures**

# COMMUNITY vs. SAFETY/SECURITY

## What makes a Neighborhood School?

### Attributes

- Site Connections
- Campus Features
- Building Presentation
- Landscape
- Extracurricular Use of the Facility
- School Policy

### Tension

- Multiple Access Points to campus
- Identifying folks that belong
- Unwelcoming vs. Embracing
- Visibility / Hiding Places
- Public access after hours / Boundaries between programs
- Rigidity / Shared resources

# COMMUNITY vs SAFETY/SECURITY

## What makes a School a Community School?

### Attributes

- Transparency
- Welcoming Entrance
- Social Emotional Spaces
  - Nest
  - Cave
  - Watering Hole
  - Connections to Nature
  - Play Spaces
- Learning Occurs Everywhere
- Displays
- Grade-Level Community Nodes
- Culture
- Policy

### Tension

- Vulnerability
- Hardened entry
- Exposure / Visibility / Dispersed Population
- Visibility
- Exposure / Visibility / Dispersed Population
- Vulnerability
- Vulnerability
- Vulnerability / Access / Dispersed Population
- Privacy
- Exposure / Visibility / Dispersed Population
- Trust vs. Suspicion
- Flexibility vs. Rigidity



# COMMUNITY

## Designing a Neighborhood School



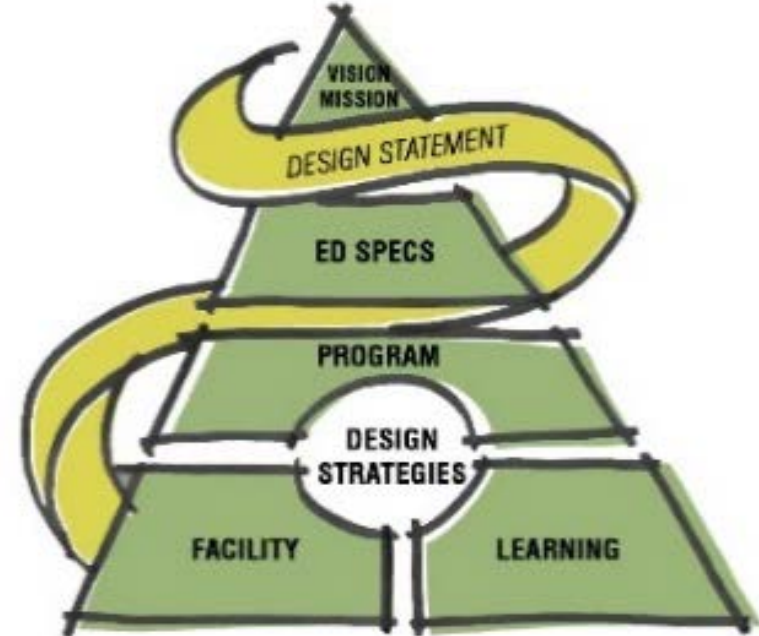
ACTIVITY 1: TRANSFORMING WORDS (15 MINUTE)

16

TOTAL

# COMMUNITY

## CRAFTING LYSETH'S DESIGN STATEMENT



STEP 1:

3

**WORDS** OR PHRASES  
THAT CAPTURES THE ESSENCE  
OF **LYSETH**

STEP 2:

3

**IMAGES** THAT CAPTURE THE  
ESSENCE OF **LYSETH**

STEP 3:

1

**DESIGN STATEMENT** THAT  
CAPTURE THE ESSENCE OF **LYSETH**

# COMMUNITY



Neighborhood Connection / Safe Place (physically, emotionally and creatively / acceptance) / Learning Campus / Natural Light

# COMMUNITY

A photograph of a community garden. In the foreground, there are several wooden benches arranged on a gravel path. Behind them are raised garden beds filled with various plants. A large yellow canopy covers the garden area. In the background, there is a building with a grey facade and a large brown utility cabinet. The overall scene is lush and green, suggesting a well-maintained outdoor space.

*“A nurturing community garden where everyone grows, learns and explores.”*



# CONTEXT

## The Project Scope

- **New secure entrance**
- **Welcoming Lobby**
- **Expanded Admin / Nurse**
- **Remove Portables**
- **Separate Gym**
- **New Library / Learning Commons**
- **Updates / Renovations**
- **Sprinkler / Fire Alarm**

*“A nurturing community garden where everyone grows, learns and explores.”*

# FLOOR PLAN

NODE



NEST



NATURE



LEARN



ENTRY



# FLOOR PLAN

NODE



LEARN



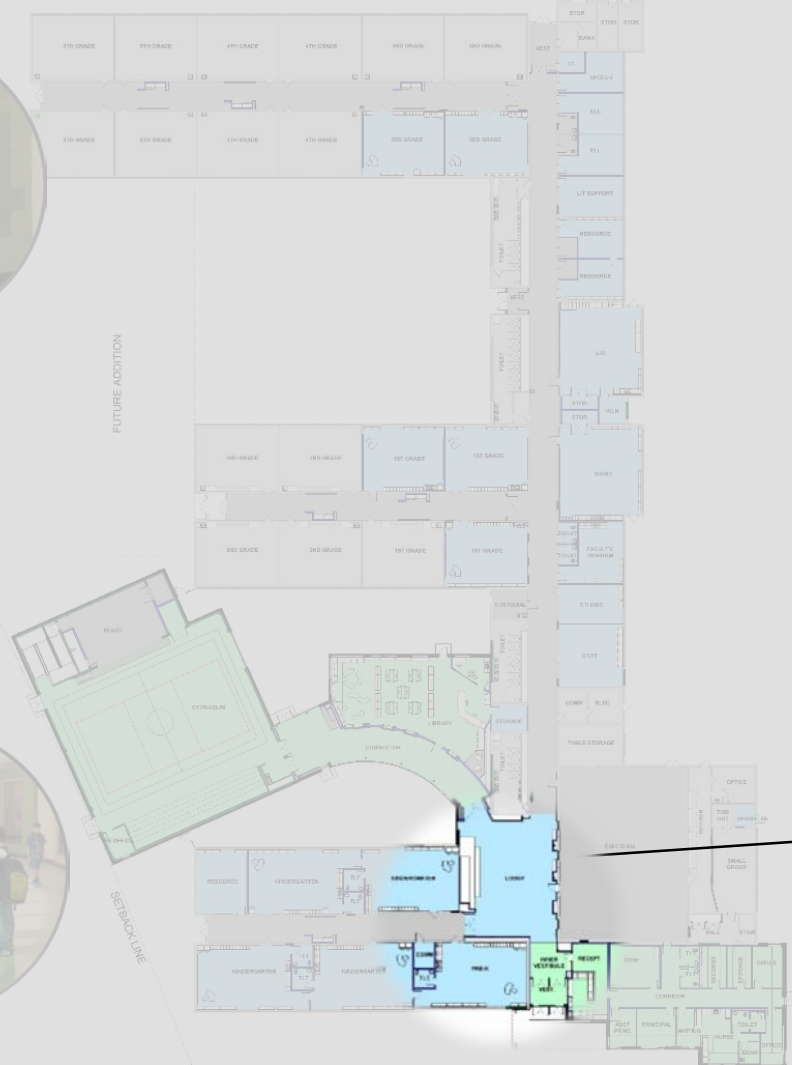
NEST



NATURE



ENTRY





WELCOMING ENTRY





# FLOOR PLAN

NODE



LEARN



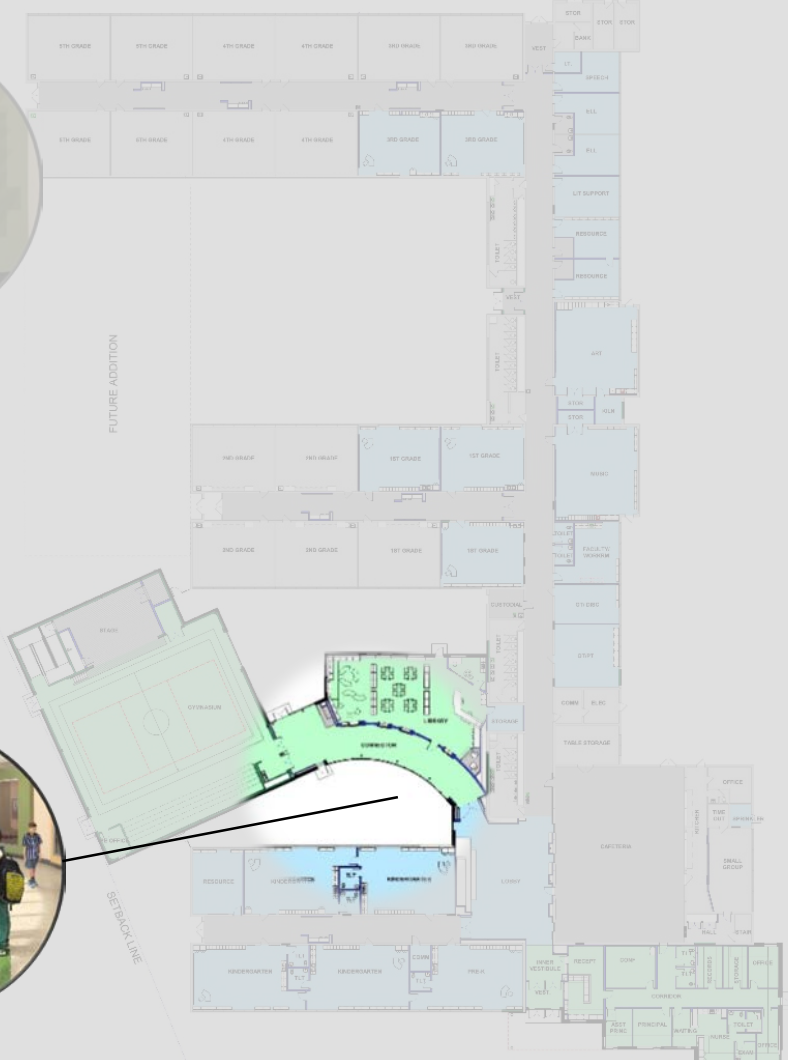
NEST



NATURE



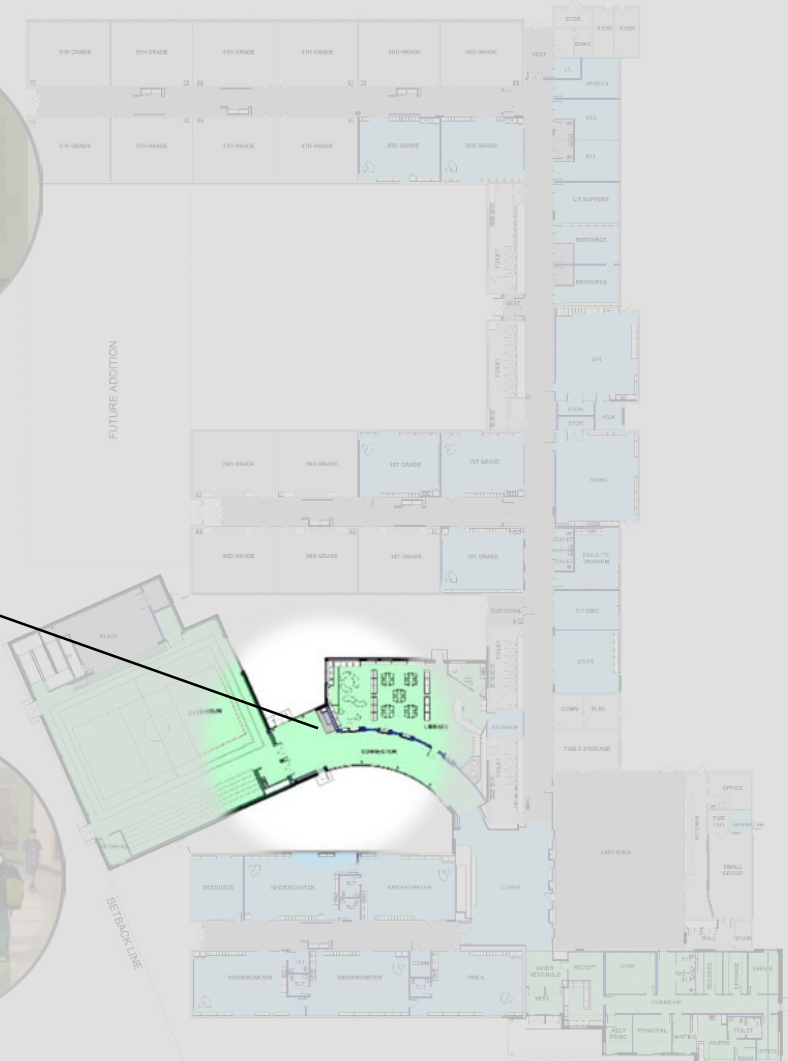
ENTRY



**CONNECTION TO NATURE**



# FLOOR PLAN



NODE



LEARN



NEST



NATURE



ENTRY









# FLOOR PLAN

NODE



LEARN



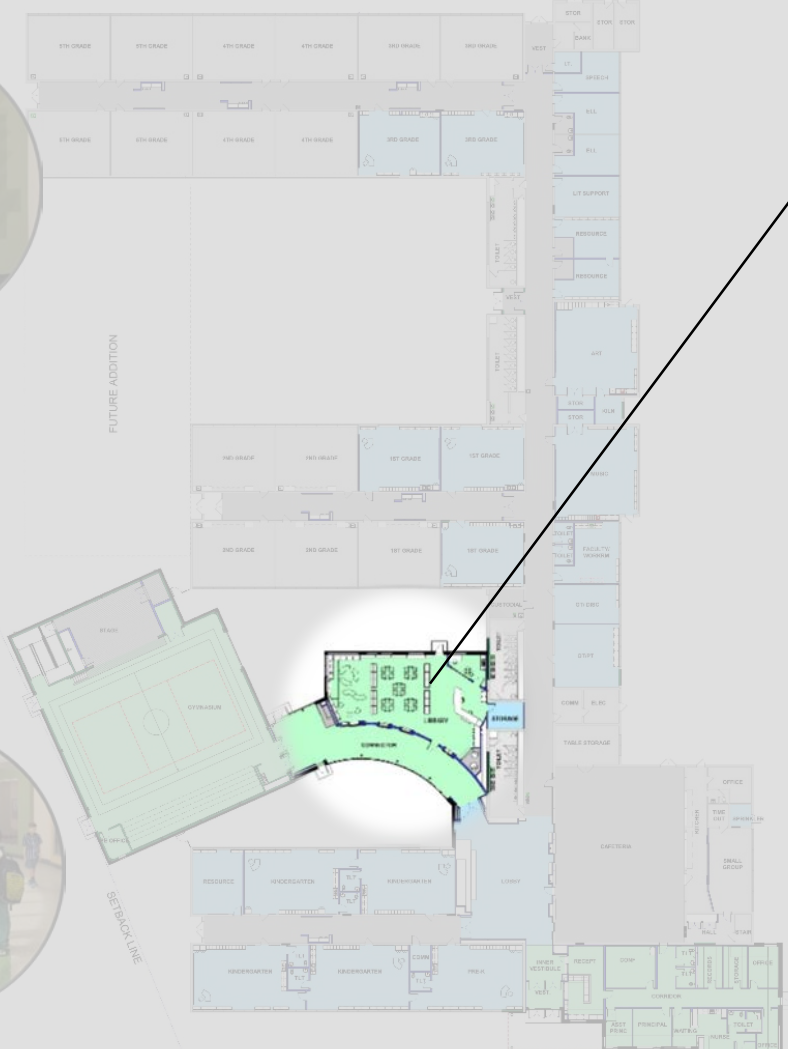
NEST



NATURE



ENTRY



LEARNING OCCURS EVERYWHERE



# FLOOR PLAN

NODE



LEARN



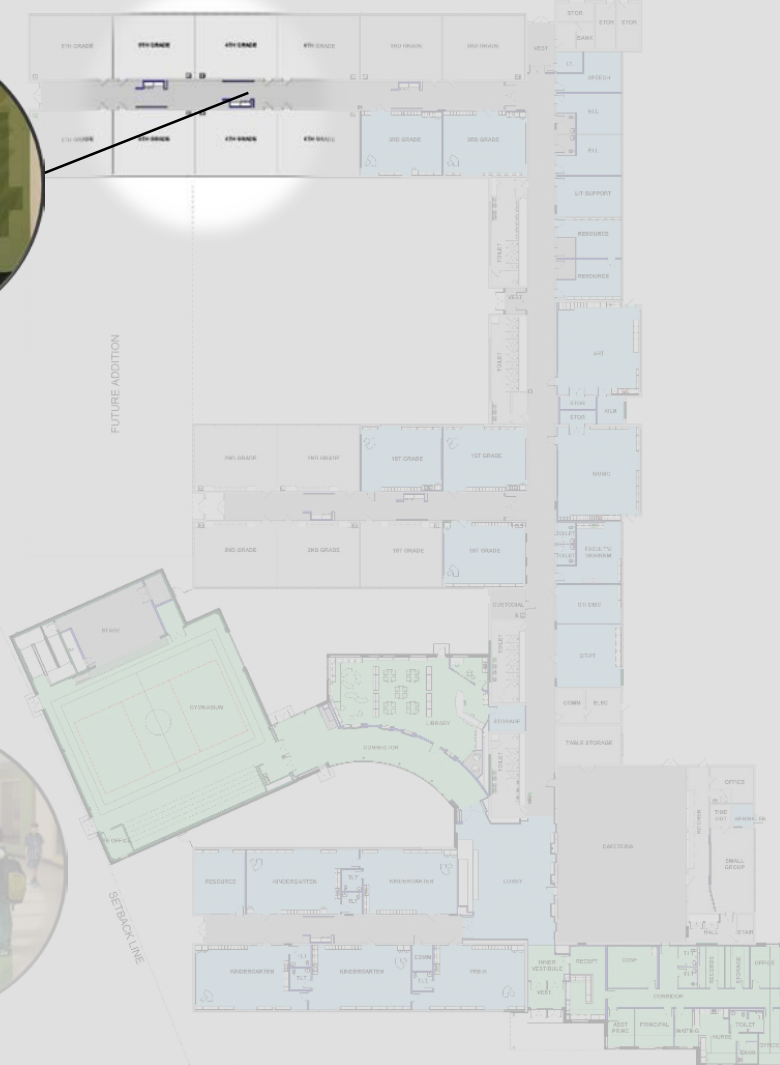
NEST



NATURE

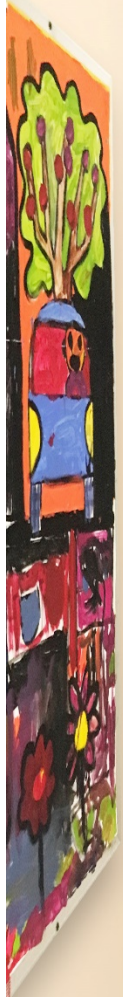


ENTRY





# GRADE LEVEL COMMUNITY NODES



# COMMUNITY + SAFETY/SECURITY

## Lessons Learned

- We need to continue the conversation and continue to learn from one another
- Continually explore the tensions between community schools and safety and security to create welcoming and safe schools.
- Alignment of building design and policies and procedures
- Educate occupants



# COMMUNITY + SAFETY/SECURITY



## Questions?

*“A nurturing community garden where everyone grows, learns and explores.”*