

2023 A4LE Northeast Annual Regional Conference
Liberated Learners

Hobbs CTECH Center: **A Vision for a Community Realized**

Theo Pappas AIA | ALEP | NCARB | LEED AP **STANTEC ARCHITECTURE**

Architect, Senior Planner for Education, CTE Specialist

Westin Philadelphia Liberty Place | Philadelphia, Pennsylvania

Friday, **April 28**, 2023

2:00 PM – 3:00 PM Directors Room



About Stantec

40+

CTE Projects
In North America

#1

Top 110
Architecture/
Engineering Firms
*Building Design &
Construction August 2022*

#4

Top 160 K-12
School Architecture
+ AE Firms
*Building Design &
Construction September 2022*

#4

Top 5 Green
Design Firms – Educational
Facilities
ENR September 2022



Designs for College and Career-Readiness

About Stantec



Genesee Career Institute (GCI)
Flint, MI



James Reese Career & Technical Center
Sugarland, TX



Academies at Loudoun
Leesburg, VA



Sterling Aviation Early College HS
Houston, TX



Robert Turner College + Career HS
Pearland, TX



Olathe West HS
Olathe, KS

AGENDA | Hobbs CTECH Center

Part One: Engagement, Discovery and Visioning

- I. Welcome to Hobbs, NM!
- II. Hobbs Municipal Schools
- III. First Steps
- IV. Partners and Funding

Part Two: Implementation

- V. Conceptual Design
- VI. Hobbs CTECH – Final Design
- VII. Schedule and Budget
- VIII. Finished Project

Part Three: Realization

- IX. Furniture, Fixtures and Equipment
- X. Programs and Staff
- XI. Branding
- XII. **Dedication Day**

Q+A



Part One:
**Engagement, Discovery
and Visioning**

I. Welcome to Hobbs, NM!

About Hobbs, NM

Located in:

- Lea County

Population:

- 40,508
2020 Census

Families:

- 8,572

Leading Industries:

- Mining/Quarrying
- Gas Extraction
- Retail Trade
- Educational Services

Colleges:

- University of the Southwest
- New Mexico Junior College



II. Hobbs Municipal Schools

Hobbs Municipal Schools (HMS)

HMS Enrollment

10,041

Students

67% Hispanic

28% Anglo

5% Black

13

Elementary
Schools

3

Middle
Schools

1

Freshman
School

1

High
School

1

Alternative
Learning
Campus

1

Career
Technical
Campus

2

Elementary Schools have
a Dual Language
Program.
English + Spanish

73%

Of HMS students
qualify for
Free and
reduced lunch.

Why a new CTE Facility?

CTECH - A Community Story

2010-2021

TJ Parks
Superintendent
of HMS



2017

TJ Parks
Introduces the
Initial Idea

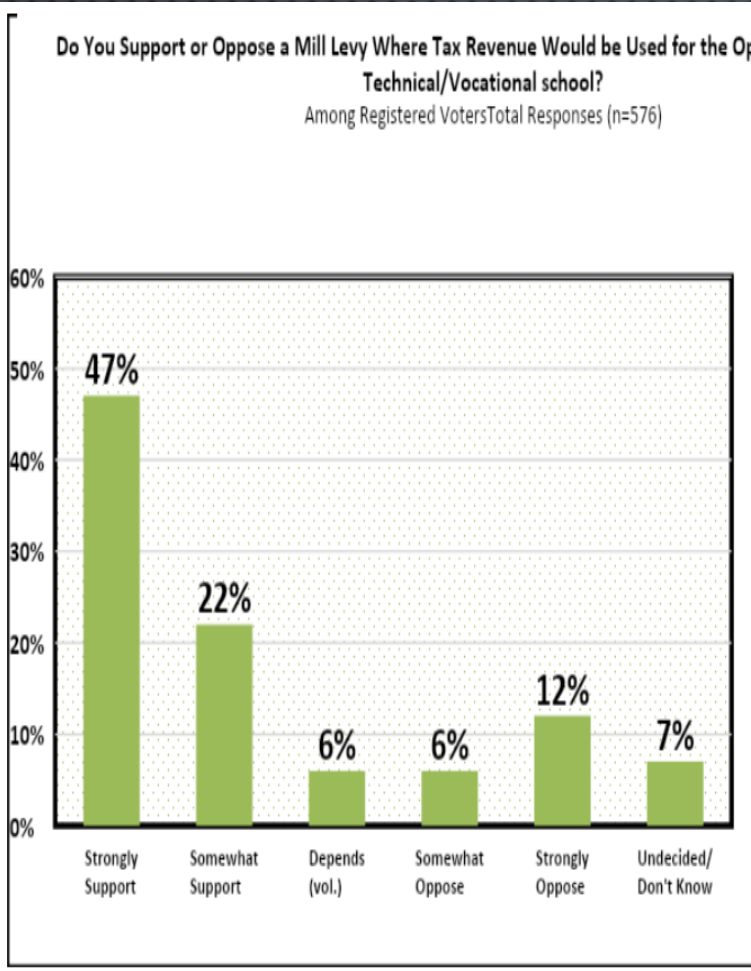


2018

Private Funding
Identify Players
Develop Action Items
Local Support
Issue a Community Survey

Hobbs Municipal Schools (HMS)

Community Survey Results



REASONS FOR SUPPORTING OR OPPOSING THE POSSIBLE MILL LEVY
TOTAL RESPONSES (n=537)
AMONG REGISTERED VOTERS WHO EITHER STRONGLY OR SOMEWHAT SUPPORT OR OPPOSE THE POSSIBLE MILL LEVY
TOP 8 UNAIDED RESPONSES

SUPPORT	
TRADE SKILLS ARE NEEDED	40%
HMS NEEDS THE MONEY FOR TECHNICAL/VOCATIONAL SCHOOL	19%
TO IMPROVE EDUCATIONAL SYSTEM	18%
HMS NEEDS THE MONEY (IN GENERAL)	9%
I WANT TO SUPPORT THE SCHOOLS	9%
OPPOSE	
AGAINST TAX INCREASE (IN GENERAL)	8%
POOR MONEY MANAGEMENT IN HMS	5%
NEUTRAL	
NEED MORE INFORMATION	8%

III. First Steps

Proposed Career Technical Education Center for Hobbs Municipal Schools

Discovery Workshops

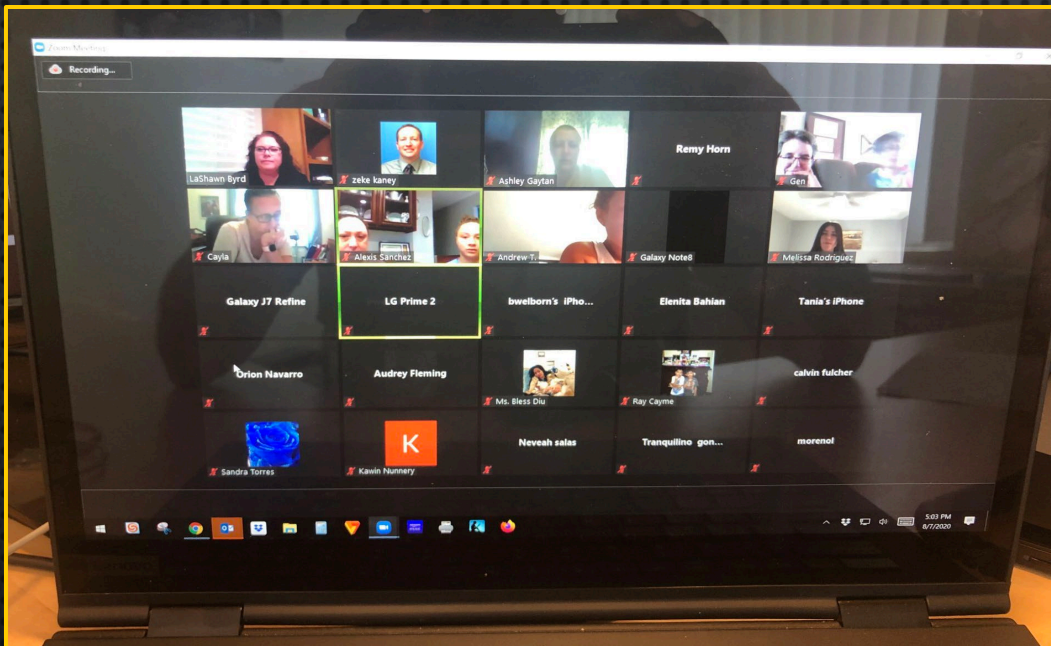
02 April – 04 April 2019



Visioning Session 1

Develop Key Factors and Guiding Principles

02 April – 04 April 2019

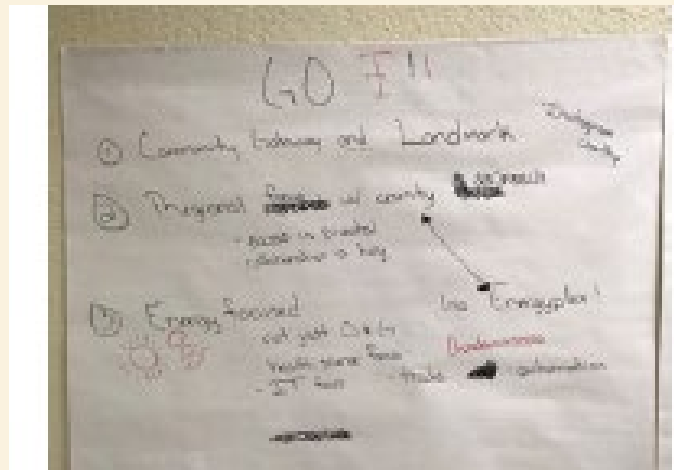


Key Factors

Identity Image Theme Branding

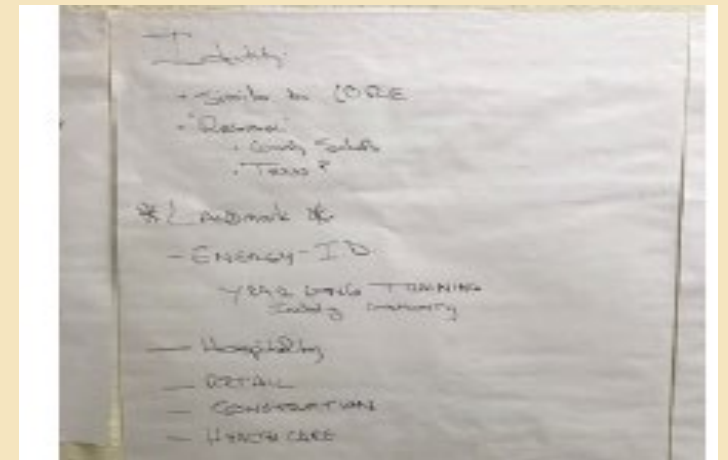
GROUP 1-

- **Community Gateway**
- Community Landmark
- **Regional Focus** w/ County Approach
- Access is Pivotal
- Collaboration is Key
- **Energy Focused** – Not just Oil + Gas but “Energyplex” Solar + Wind
- Health Science Focus
- **IT Focus** (Trades + Automation)
- Academies



GROUP 2-

- Like the "CORE" Rec Center
- **Regional** – Include all County Schools
- West Texas?
- Landmark
- Identity as “Energy”
- Year Long Training (Programs for Community)
- Hospitality Focus
- Retail Focus
- **Construction Focus**
- Healthcare Focus

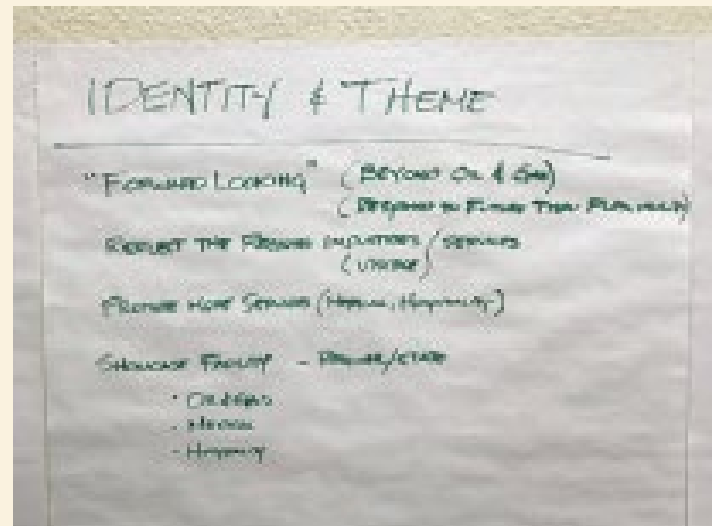


Key Factors

Identity Image Theme Branding

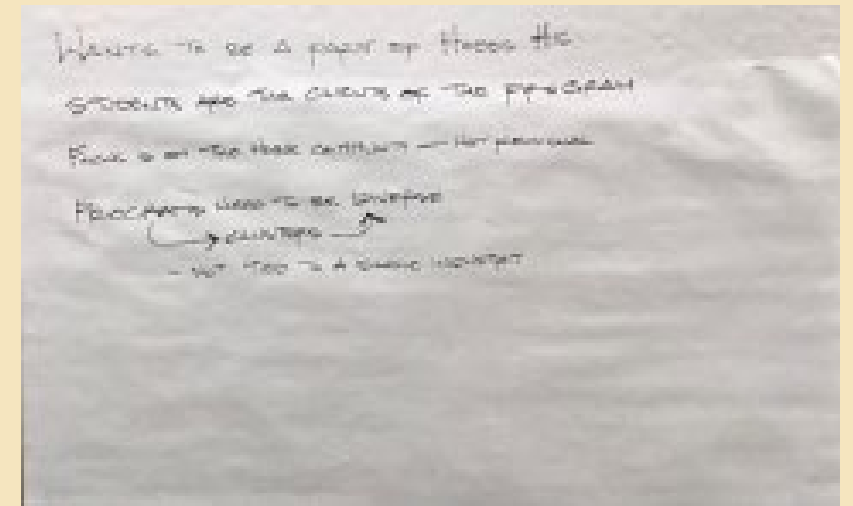
GROUP 3-

- Forward Looking – Beyond Oil + Gas
- Respond to the Future through Flexibility
- Reflect the Regions Industries/Services
- Be Visible
- Promote More Services (Medical/Hospitality)
- Showcase the Facility Regional and Statewide
 - Oil and Gas
 - Medical
 - Hospitality



GROUP 4-

- Wants to be Part of Hobbs High School
- Students are the Clients of the Program
- Focus on Hobbs Community – NOT Regional
- Programs Need to be Diverse
- Not Tied to a Single Industry

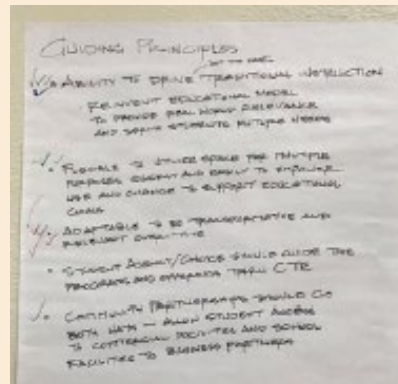


Guiding Principles

Guiding Principles For The Design

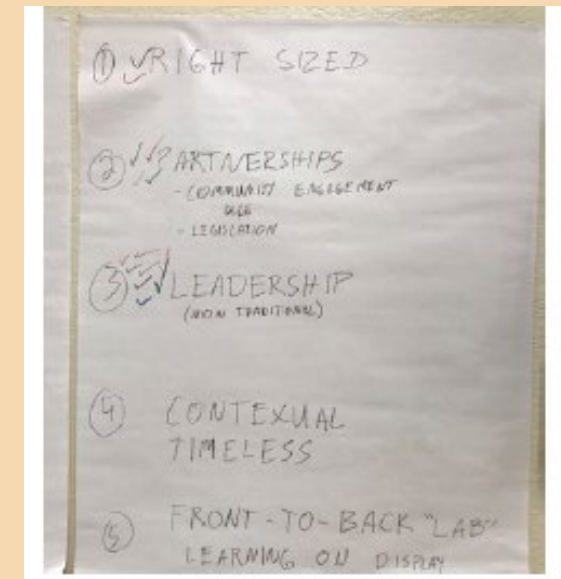
GROUP 1-

- Ability to “Drive Out The Door” Traditional Instruction
 - Reinvent educational model to provide real world relevance and serve students needs
- **Flexible:** Ability to Utilize Space for multiple uses quickly and easily to empower us to support educational goals
- **Adaptable:** To be transformative and relevant over time (Highest Rated Principle)
- **Student Agency:** Choice should Guide the Programs and Offerings
- **Community Partnerships Should go Both Ways:** Allow Students Access to Commercial Facilities and School Facility Access to Business Partners



GROUP 2-

- Right-Sized
- Partnerships
 - Community Engagement
 - Legislation
- **Leadership (Highest Rated Principle)**
 - Non-Traditional
- Contextual
 - Timeless
- Front-To-Back “Lab”
 - Learning on Display

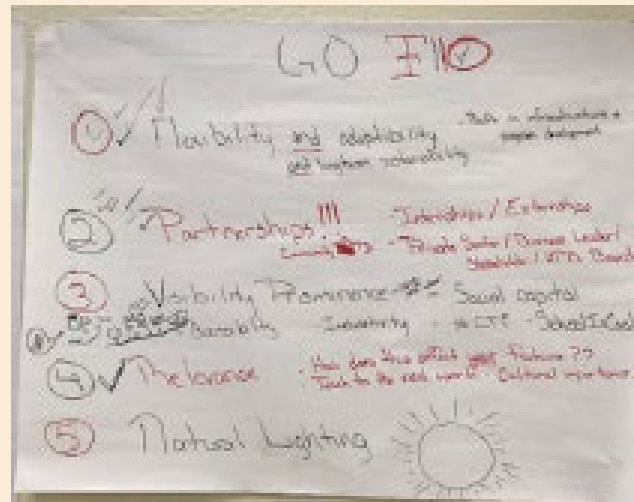


Guiding Principles

Guiding Principles For The Design

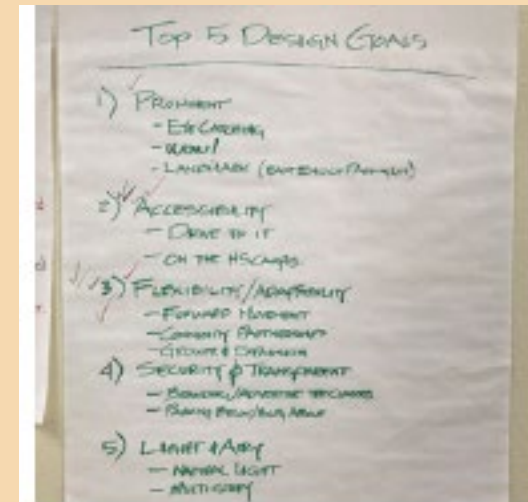
GROUP 3-

- **Flexibility + Adaptability: Long term Sustainability**
 - Both in Infrastructure + Program Development
- **Partnerships (Highest Rated Principle):**
 - Internships/Externship
 - Community Buy-In
 - Private Sector/Business Leader/Stakeholder/HMC Board
- **Visibility + Prominence:**
 - Accessibility
 - Inclusivity
 - Social Capital #CTE
 - School is Cool
- **Relevance:**
 - How does this affect your future?
 - Teach to the Real World – Cultural Importance
- **Natural Lighting**



GROUP 4-

- **Prominent**
 - Eye-Catching
 - WOW!!
 - Landmark (East end of Parking Lot)
- **Accessibility**
 - Drive To It
 - On the High School Campus
- **Flexibility + Adaptability (Highest Rated Principle)**
 - Forward Movement
 - Community Partnerships
 - Growth + Expansion
- **Security + Transparent**
 - Branding – Advertise the Classes
 - Parking below/ Building above
- **Light and Airy**
 - Natural Light
 - Multi-Story



Highest Rated Design Considerations from Stakeholders Input

Adaptable

- To be Transformative + Relevant over time

Partnerships

- Internships/Externships
- Community Buy-in
- Private Sector/Business
- Leader/Stakeholder/HMS Board

Flexibility/Adaptability

- Forward Movement
- Community Partnerships
- Growth and Expansion

Prominent

- Eye-Catching
- WOW!!!
- A New Landmark



Visioning Session 2

CTE Cluster Prioritization



New Mexico: Top Ten Job Openings in 2018

(Source: New Mexico Workforce Connection)



1. Personal Care Aides
2. Food Prep/Service
3. Home Health Aides
4. Registered Nurses
5. General and Operations Managers
6. Waiters/Waitresses
7. Custodial/Housekeeping
8. Medical Assistants
9. Cooks/Restaurant Management
10. Customer Service Reps

New Mexico: Fastest Growing Jobs 2018

(Source: Zippia: The Career Expert)



1. Personal Care Assistant (142%)
2. Home Health Aid (140%)
3. Physical Therapist (133%)
4. Nurse Practitioner (131%)
5. Speech-Language Pathology Internship (125%)
6. Child Care Provider (123%)
7. Preschool Teacher (122%)
8. Medical Technologist (121%)
9. Massage Therapist (121%)
10. Crew Member (Fast Food) (120%)

New Mexico: Potential Growth Industries

(Source: Investopedia)



1. Energy
2. Aerospace/Defense
3. Tourism/Food Service
4. Distribution/Logistics/Transportation
5. Advanced Manufacturing
6. Digital Media and Film Production
7. Administration/Federal Government

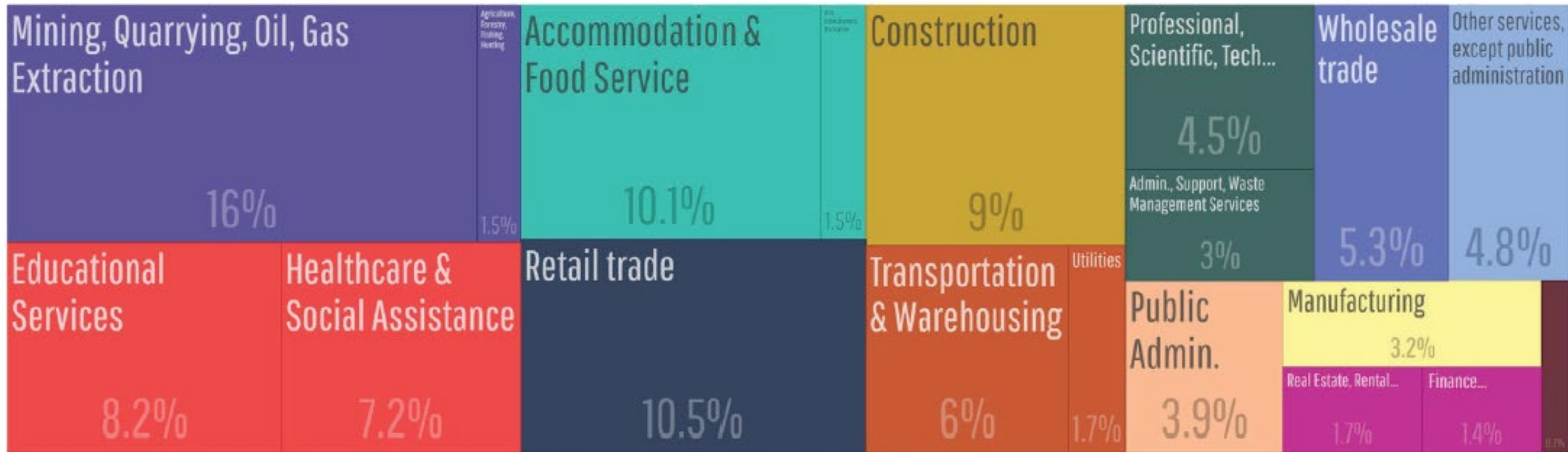
New Mexico: JOB Growth Projections

(Source: New Mexico Department of Workforce Projections)

Exhibit 4: Projected Percentage Employment Growth by Major Industry
New Mexico, 2014–2024




Hobbs NM: Most Common Employment Sectors



Post-Secondary Alignment

New Mexico Junior College as a Key Stakeholder

Program of Study: Manufacturing		
 High School	Grades/ Completed	Post-Secondary
9th Grade		
English 1		Occupational Safety for Construction OSH2006
Algebra 1, Geometry or Algebra 2		Plumbing and Safety Fundamentals PLMB1105
Physical Science		Blueprint Reading PLMB1110
New Mexico History and Health		Intro to Gas Fitting and Pipe Laying PLMB1115
High School 101		Drain Waste and Vent 1 PLMB1120
PE		Water Piping Systems PLMB1130
Intro to Skills USA		Trades Math PLMB1305
10th Grade		
English 2		College Writing ENG1101
Geometry, Algebra 2, or IMP		Drain Waste and Vent 2 PLMB1125
Biology		Plumbing Theory and Repair PLMB1215
World History		Plumbing Code Applications PLMB1120
Intro to Craft Skills		Building Maintenance and Repair PLMB1225
Spanish 1		Gas Code App PLMB1235
1 Elective		Hydraulics and Plumbing Systems PLMB1235
11th Grade		
English 3		Introduction to Psychology PSY1101
Algebra 2, Geometry, or Pre-Calculus		Welding Fundamentals WELD1062
Chemistry or Environmental Science		Fundamentals of Info Literacy IT1010
United States History		College Algebra MATH1365
Spanish 2		Backflow Prevention PLMB1205
Industrial Tech Level 1		Commercial Plumbing PLMB1210
Energy Tech Level 1		Spring College Term 4
12th Grade		
English 4		Solar Thermal Systems PLMB1320
Geometry, Financial Algebra, College Algebra or Pre-Calculus		Energy and Water Conservation PLMB1330
Conceptual Physics		Refrigerant Fundamentals HVAC1105
Government and Economics		Basic Electricity HVAC1110
Industrial Tech Level 2		Heating Systems HVAC1245
Industrial Tech Level 2		Air Conditioning Systems HVAC1235
Industrial Tech Level 2		
Additional High School Construction Electives		
Energy Tech Level 2, and Energy Lineman		* Degree Plan from Central New Mexico Community College (CNM)
Cluster- Manufacturing		
Pathways- Health, Production, Manufacturing, Quality/Assurance, and Environmental Assurance		

Selecting Clusters, Pathways + Programs

Initial Pathways Explored

TYPES OF VOCATIONAL EDUCATION/TRADE SKILLS NEEDED MOST IN THE COMMUNITY TOTAL SAMPLE (N=860) TOP 11 UNAIDED RESPONSES	
OIL FIELD SERVICES	26%
WELDING	22%
CONSTRUCTION	19%
HEALTHCARE	17%
ELECTRICIAN	16%
COMPUTER TECHNOLOGY	14%
AUTOMOTIVE	12%
PLUMBING	10%
BUSINESS/OFFICE MANAGEMENT	9%
NONE IN PARTICULAR	8%
DON'T KNOW/WON'T SAY	14%

Career and Technical Education and Industry CLUSTERS AND PATHWAYS



Please list your name and prioritize the HMS clusters from 1-16 (1: highest priority; 16: lowest priority)

Name	Agriculture, Food, & Natural Resources	Architecture & Construction	Arts, AV/Technology & Communication	Business Management & Administration	Education & Training	Finance	Government & Public Administration	Health Science	Hospitality & Tourism	Human Services	Information Technology	Law, Public Safety, Corrections & Security	Manufacturing	Marketing	Science, Technology, Engineering & Mathematics	Transportation, Distribution, & Logistics	Energy
Group 1-C	8	3	9	13	4	10	17	5	6	16	7	12	15	14	1	11	2
Group 2-D	15	7	12	14	9	13	17	3	6	10	4	5	11	18	1	8	2
Group 3-TT	10	4	13	9	8	15	14	3	6	17	5	11	12	18	1	7	2
Group 4-B	7	2	12	13	15	14	17	16	4	11	8	10	3	9	5	6	1
AVERAGE	10	4	11.5	12.25	9	13	16.25	6.75	5.5	13.5	6	9.5	10.25	13.75	2	8	1.75

- 1 ENERGY
- 2 STEM
- 3 ARCHITECTURE
- 4 HOSPITALITY
- 5 IT
- 6 HEALTH SCIENCE
- 7 TRANSPORTATION
- 8 EDUCATION
- 9 LAW
- 10 AG
- 11 MANUF
- 12 ARTS AV
- 13 BUSINESS
- 14 FINANCE
- 15 HUMAN SERVICES
- 16 MARKETING
- 17 GOVERNMENT



TO BE IN NEW BUILDING



TO REMAIN/ BACKFILL INTO EXISTING HIGH SCHOOL

Oil + Gas Industry

INTERNSHIPS & HIRING PROGRAMS

Accounting
Advanced Analytics & Energy Technologies
Engineering
Finance
Geology & Geophysics
Health, Safety & Environment
Human Resources
Information Technology Audit
Information Technology Services
Land
Land Administration
Marketing
Midstream Management
Petrophysics
Supply Chain Management

Crude Oil Marketing Representative
Assistant Pumper
Pumper
Corrosion Technician
Gas Marketing Representative
Senior Internal Auditor
Accounts Payable Clerk/General Accounting
Regulatory Analyst
Operations Analyst – Midstream
Electrical Construction Foreman – Production
Oil and Gas Marketing Manager
Automation Technician
Gas Measurement Technician
Survey Engineering Technician
Construction Foreman – Facilities
GIS Analyst
Pipeline Operator

Oil + Gas Industry

INTERNSHIPS & HIRING PROGRAMS

Air Quality Specialist
Drivers
Network Engineer
Analysts
Accountants
Maintenance Supervisor
IT Infrastructure Manager
Mechanical Technician
Truck Technician

PETROCHEMICAL INDUSTRY

Natural Gas	Plastics
Liquefied Natural Gas	Lubricants
Oil/Heavy Oil	Synthetics
Shale Oil	
Deep Water	

RESEARCH & DEVELOPMENT

Micro-Seismic Monitoring
Laser Cutting
Fiber Optics
Nanolaminate Technology
Coating Technology
Horizontal Drilling
Hydraulic Fracturing
3D Seismic Surveying
Enhanced Oil Recovery
Catalytic Cracking
Sub-Sea Deep Water Drilling and Operations
UAV (Unmanned Aerial Vehicles)
Drone Technology: Pipeline and Facility
Inspections and Safety
Sustainability/Climate Change

Oil + Gas Industry

UPSTREAM

Exploration & Drilling

MIDSTREAM

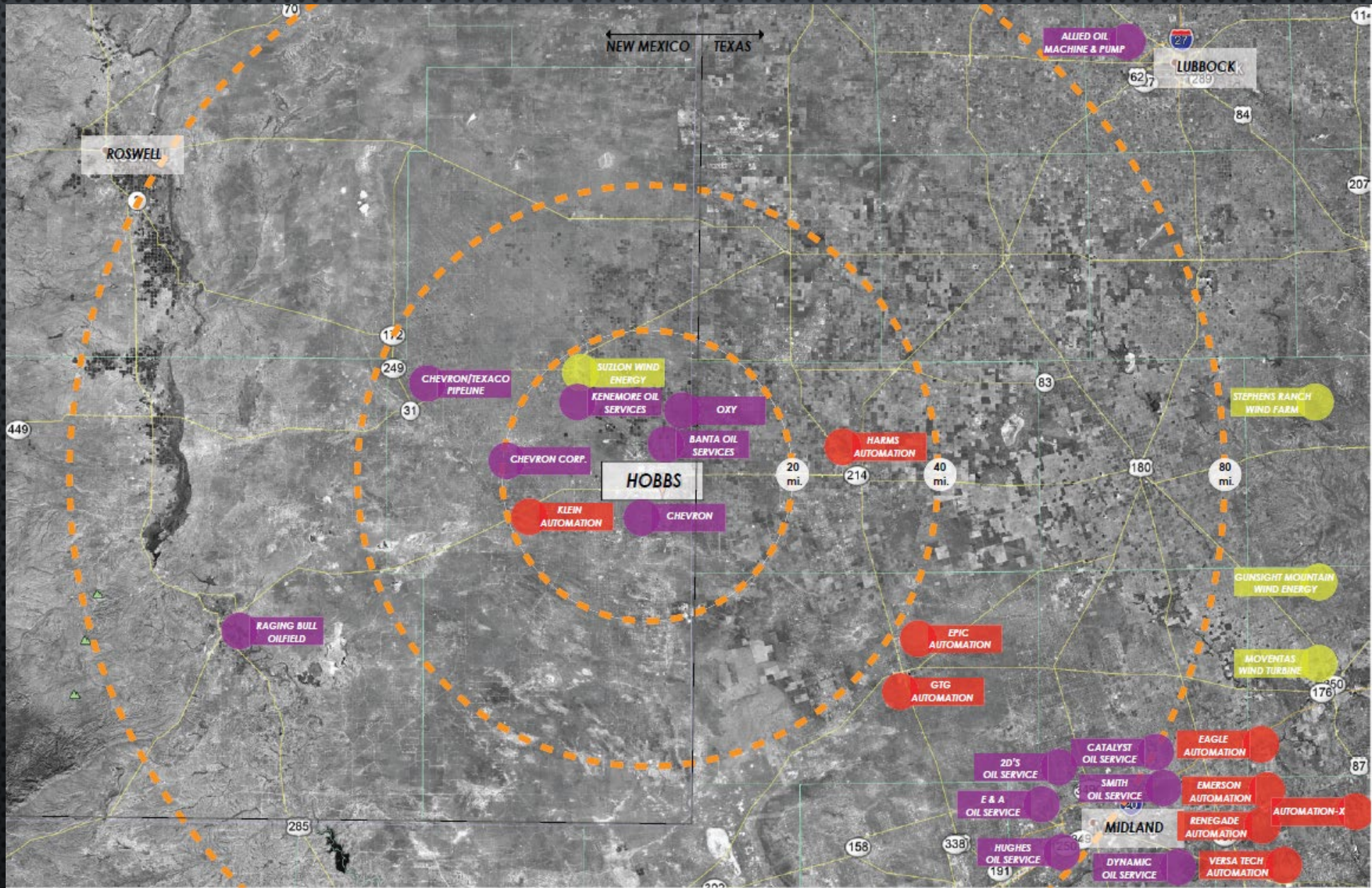
Pre-refined Distribution,
Transportation & Storage

DOWNSTREAM

Refining / Products & Distribution



Key Stakeholders – Local + Regional Employers



CTE Programs Served

Career Pathway



  **TRANSPORTATION**


**AUTOMOTIVE SYSTEMS**
DIESEL ENGINE
GAS ENGINE

All career pathways are certification based career-training programs

Snap-On
ASE Certified


Career Pathway

  **Construction Architecture**


**Carpentry**
Electric
Plumbing
HVAC-R
Draftsman
CADD Architecture

All career pathways are certification based career-training programs

Career Pathway

 **Energy**

OIL AND GAS INDUSTRY

**OILFIELD PROCESSES**
PROGRAMMABLE LOGIC CONTROLLER
ROBOTICS

All career pathways are certification based career-training programs

Career Pathway

  **MANUFACTURING**

**WELDING**
METAL WORK
CNC MILLING
MACHINING

All career pathways are certification based career-training programs

Career Pathway

  **Information Technology**

**NETWORKING**
CYBER SECURITY
AUTOMATION
DIGITAL MEDIA
ROBOTICS

All career pathways are certification based career-training programs

Career Pathway

 **Culinary Hospitality**

**FOOD AND BEVERAGE SERVICE**
HOTEL MANAGEMENT
RESTAURANT MANAGEMENT

All career pathways are certification based career-training programs

IV. Partners + Funding

Meeting Key Partners



IT ALL HAPPENS HERESM



Permian Strategic Partnership



JF Maddox Foundation



The JF Maddox Foundation believes in the people of **Lea County**. We think big, dig deep and connect the community so that together we can cultivate big-picture possibilities for all our Lea County neighbors. We help bring about the changes that help people here thrive for generations.

We innovate primarily in education, community development, and social services to ensure people are attracted to and thrive in Lea County.

The JF Maddox Foundation was established in 1963 by Jack and Mabel to serve the residents of southeastern New Mexico.

During its history, the Foundation has made grants to a wide variety of non-profit organizations and governmental entities. Grants have been made to organizations involved in **education, social programs, and community development for projects which have generally sought to enhance the lives of those living in Lea County, New Mexico.**



From left to right: Jim Maddox, Don Maddox, Sue Maddox, and Susan Maddox

Daniels Fund Partner



The Daniels Fund, established by cable television pioneer Bill Daniels, is a private charitable foundation dedicated to making life better for the people of Colorado, New Mexico, Utah, and Wyoming through its grants program, scholarship program, and ethics initiative.

When Bill was a teenager, his family moved to **Hobbs, New Mexico**. Bill was driven and popular, but his unruly nature prompted his parents to enroll him in the New Mexico Military Institute (NMMI) in nearby Roswell.

The man Bill had become proved to be a fine naval officer and fearless combat pilot in World War II. He was awarded the Bronze Star for "heroism, courage, and devotion to duty" as he made repeated trips to rescue wounded shipmates after a devastating enemy attack on the aircraft carrier *USS Intrepid*. Bill also served during the Korean Conflict. He was instrumental in pilot training for the U.S. Navy during their transition to jet aircraft and retired a decorated Commander.



Bond Election

\$81 Million Total Construction Costs

82%



Approved

\$30 Million Southern Heights Elementary
\$18 Million – Public School Facility Authority
\$ 22 Million – Hobbs Municipal Schools Taxpayers

\$51 Million Career Technical Educational Facility

City of Hobbs	\$ 10 M
Lea County Legislators	\$ 900 K
Legislators Kernan & Scott	\$ 337 K
JF Maddox Foundation	\$ 10 M
Permian Basin Strategic Partnership	\$ 10 M
Daniels Foundation	\$ 1.6 M
Bond Election	\$ 15 M
ESSER III	\$ 5 M

Partnerships will contribute 63% of the construction costs of the \$81 million projects, contingent on passage of the GO Bond

Final Funding Tally

Hobbs Municipal Schools Bond	\$ 15,000,000
JF Maddox Foundations	\$ 10,000,000
Permian Strategic Partnership	\$ 10,000,000
City of Hobbs	\$ 10,000,000
Lea County Commissioners Eidson, Sena & Long	\$ 900,000
State Legislators Kernan & Scott	\$ 337,000
Daniels Foundation	\$ 1,600,000
<u>Other</u>	<u>\$ 6,300,000</u>
TOTAL COST:	\$ 54,137,000

Part Two:
Implementation

V. Conceptual Design



High School

Hobbs High School
Tennis Courts
Temporarily closed

Eagle Stadium

Hobbs Inn

Stadium Dr

Stadium Dr

E Clinton St

N Marland Blvd

U.S. Hwy 62

N Marland Blvd

N Marland Blvd

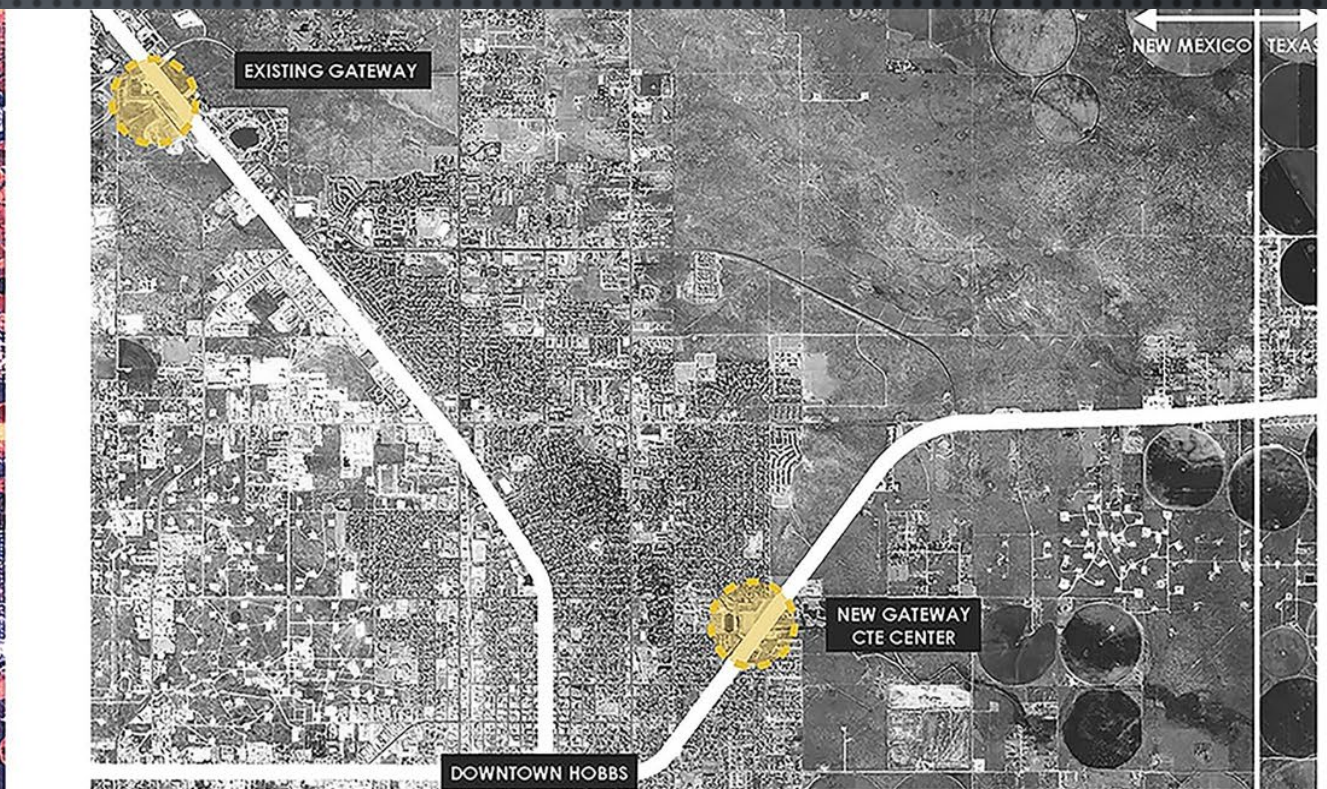
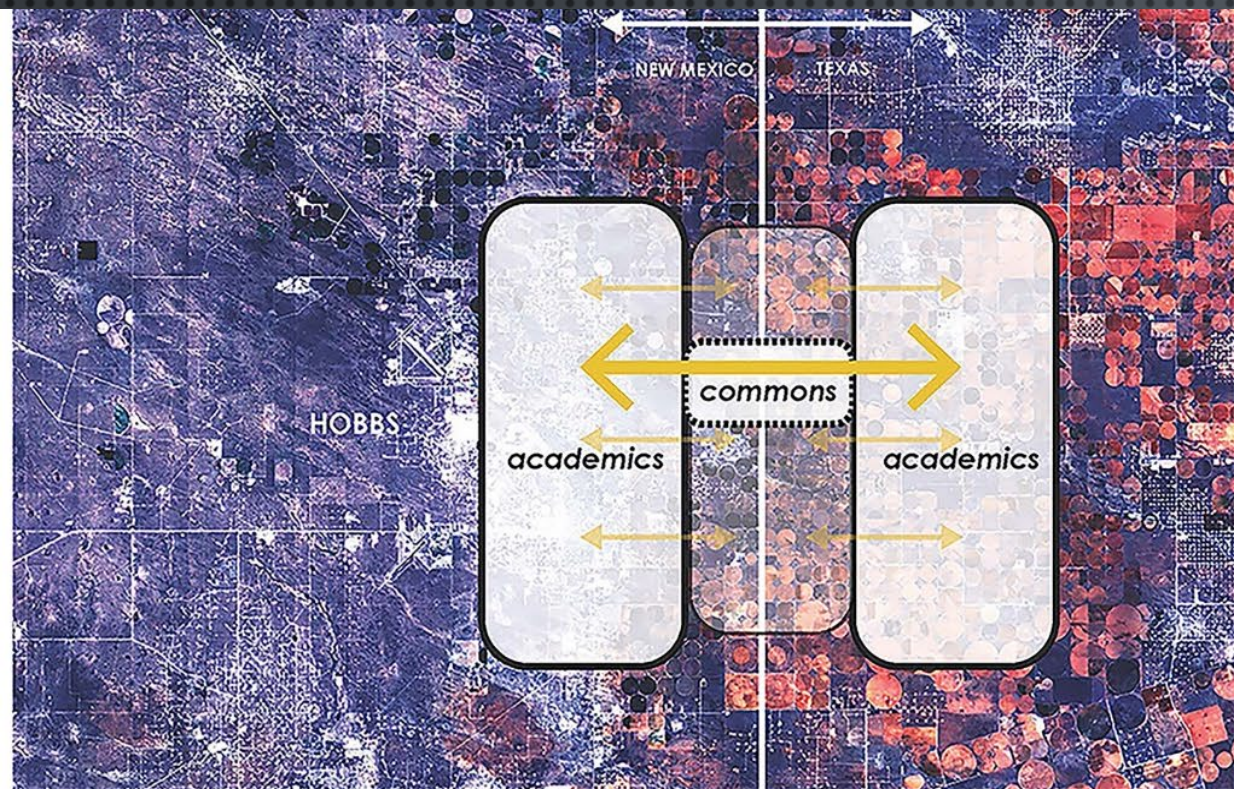
E Scharbauer St

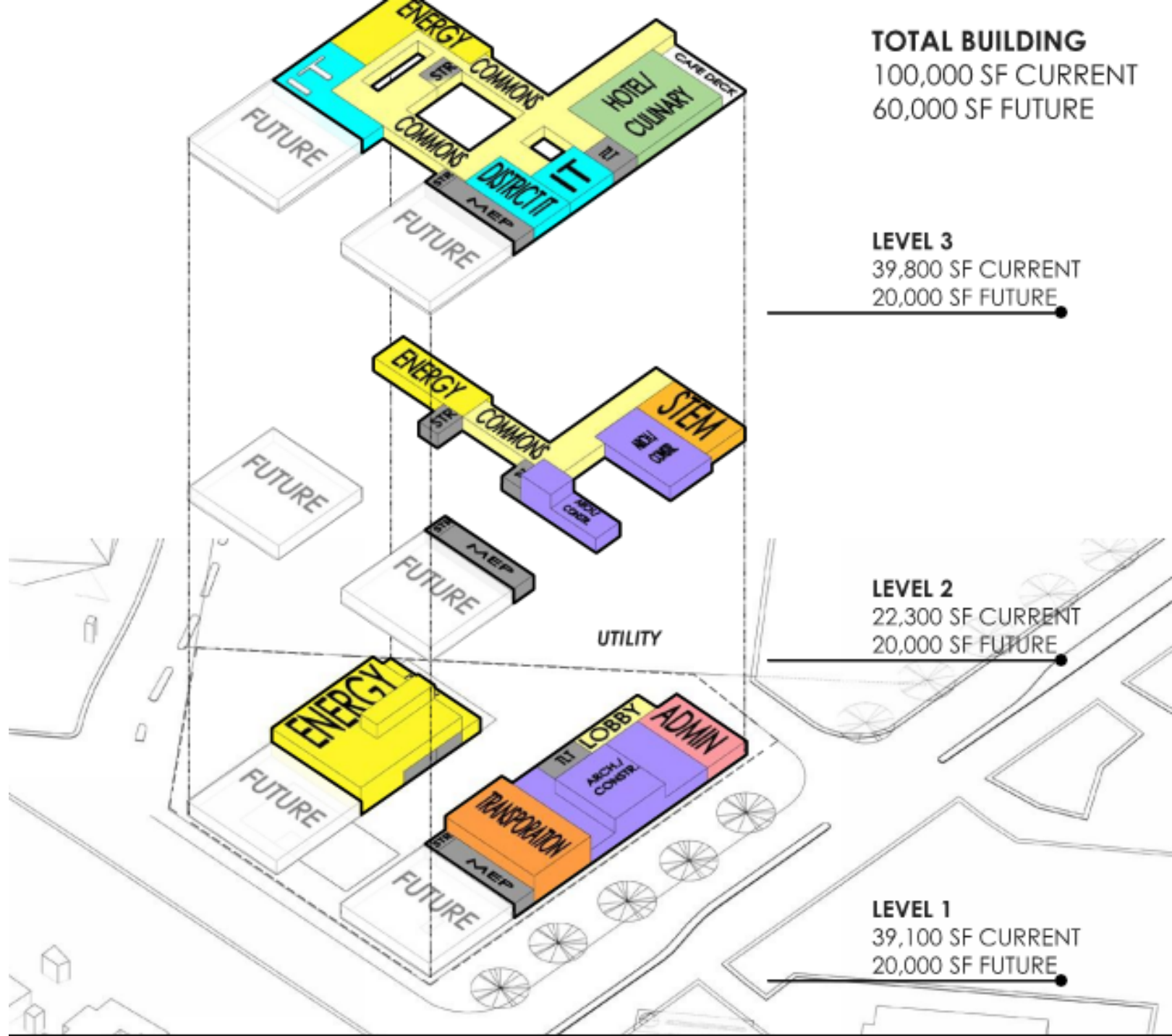
nton St

Sunrise Homes

Good

Ride Ln

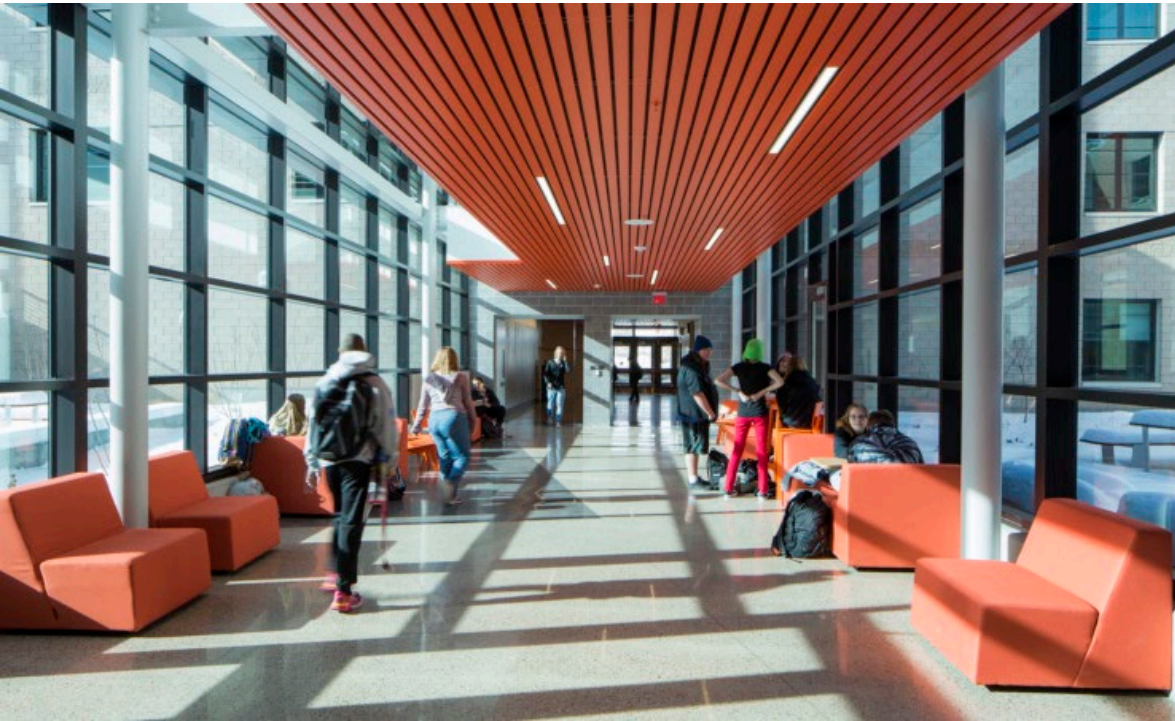








Exterior Inspiration | New Mexico Oil Industry Vernacular

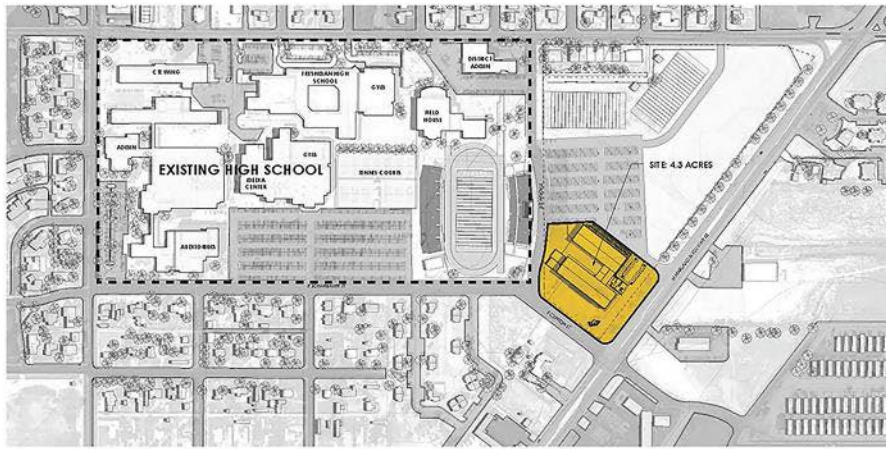


Interior Inspiration | Pipelines

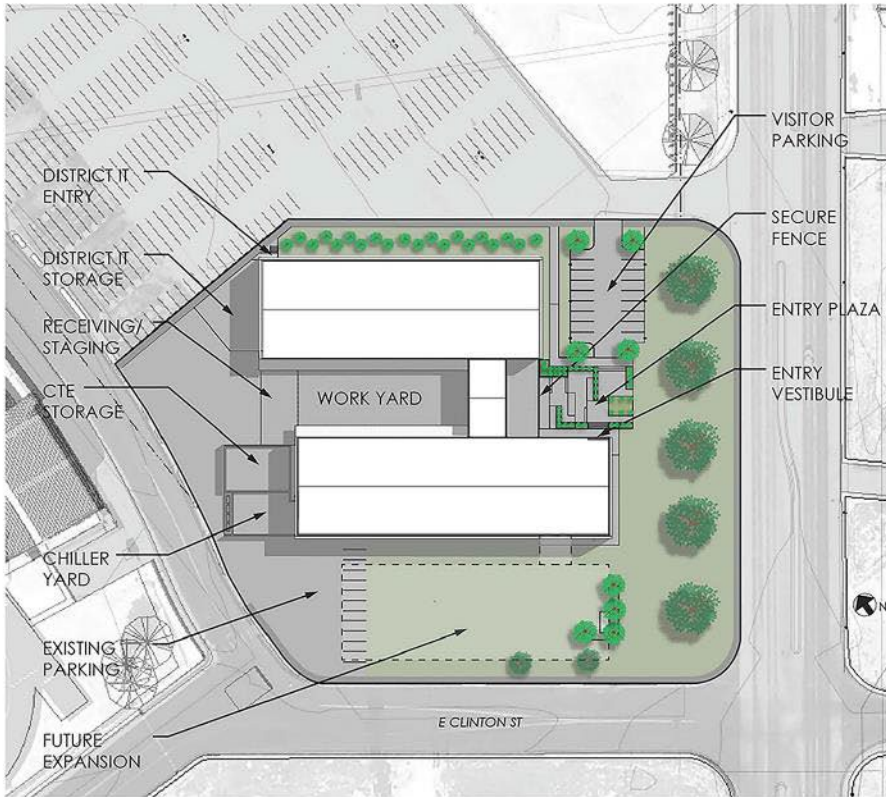


Interior Inspiration | Openings

VI. Hobbs CTECH- Final Design



CAMPUS PLAN



SITE PLAN

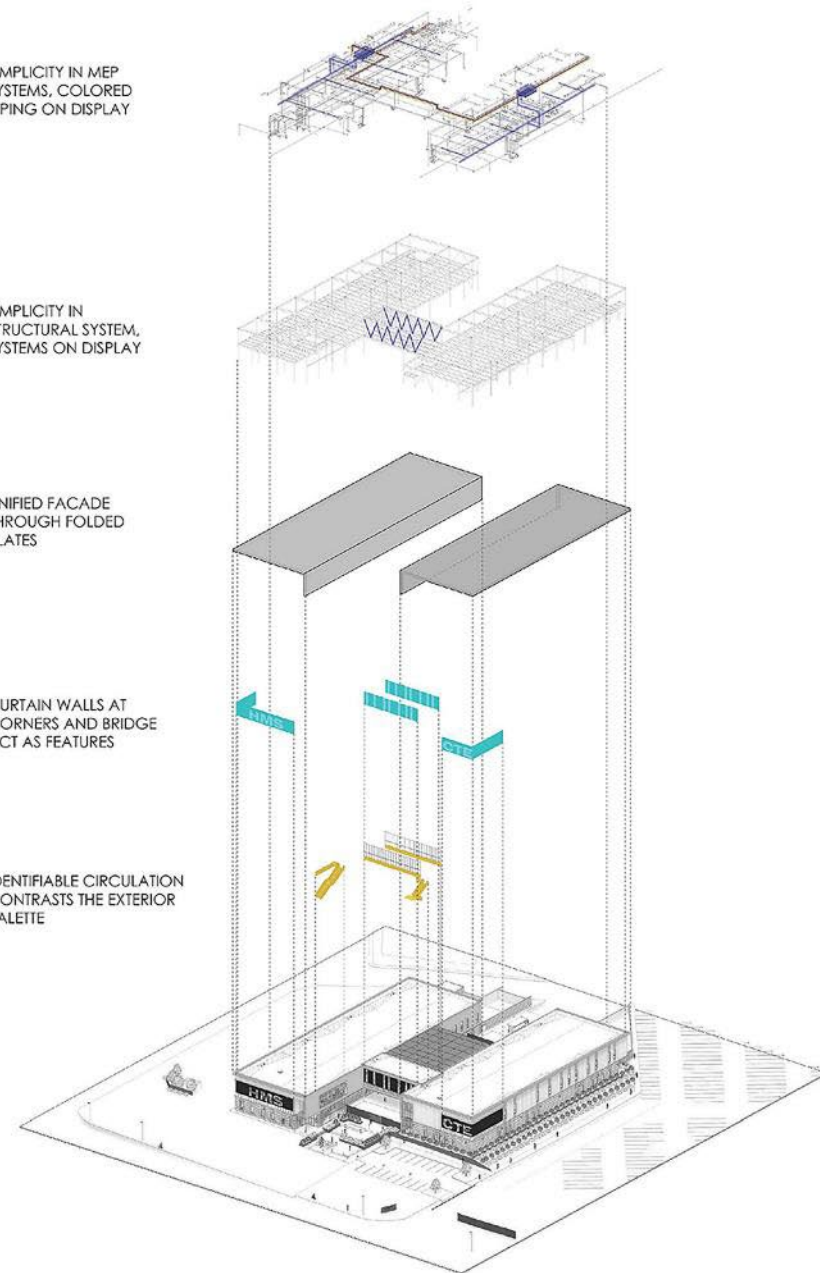
SIMPLICITY IN MEP SYSTEMS, COLORED PIPING ON DISPLAY

SIMPLICITY IN STRUCTURAL SYSTEM, SYSTEMS ON DISPLAY

UNIFIED FACADE THROUGH FOLDED PLATES

CURTAIN WALLS AT CORNERS AND BRIDGE ACT AS FEATURES

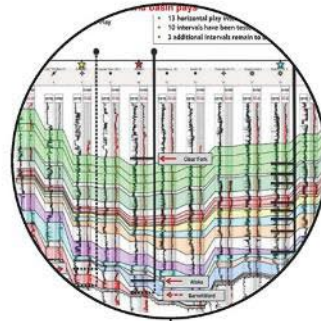
IDENTIFIABLE CIRCULATION CONTRASTS THE EXTERIOR PALETTE



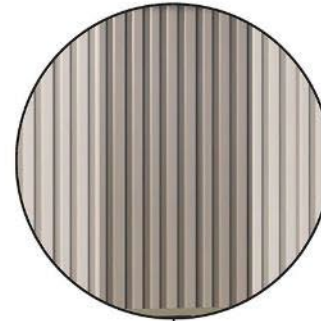
reveals in brick
represent the strata
of the earth while providing
a heavy base for the
classrooms to sit on



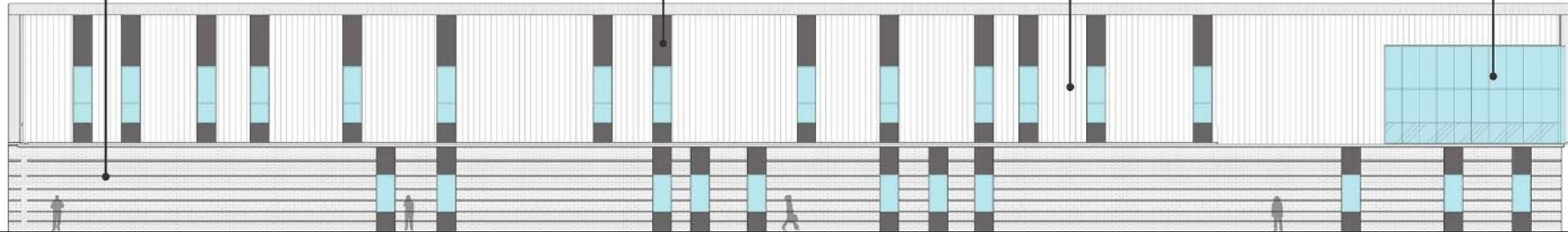
vertical fenestration patterns
mimic drill wells piercing the
layers of the ground



alternating gray metal
panel reinforce the industrial
quality of a CTE building
while giving movement to the facade



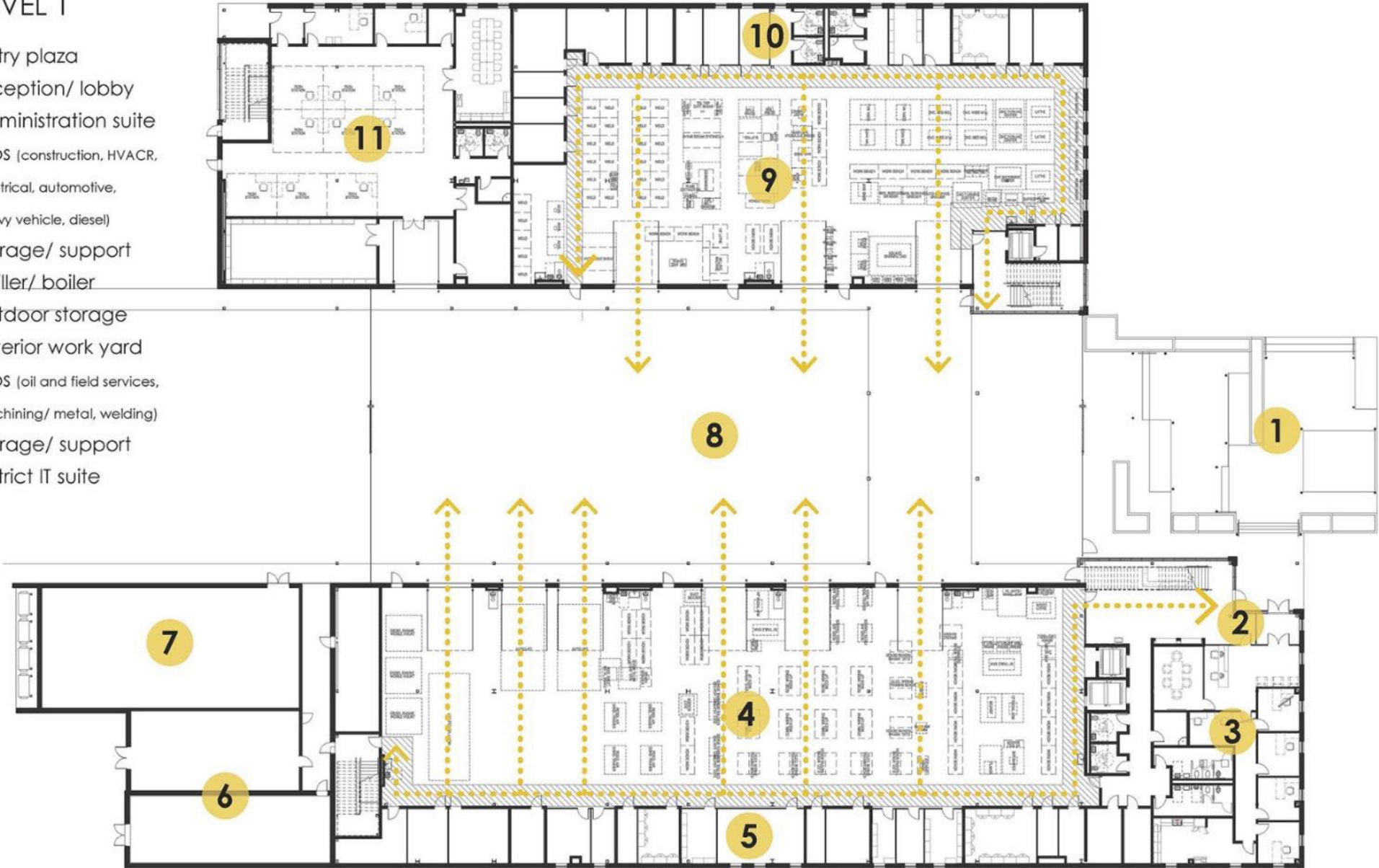
glass corners provide ample
daylight to architecture and
energy studios while also making
them focalpoints of the exterior



SOUTH ELEVATION

LEVEL 1

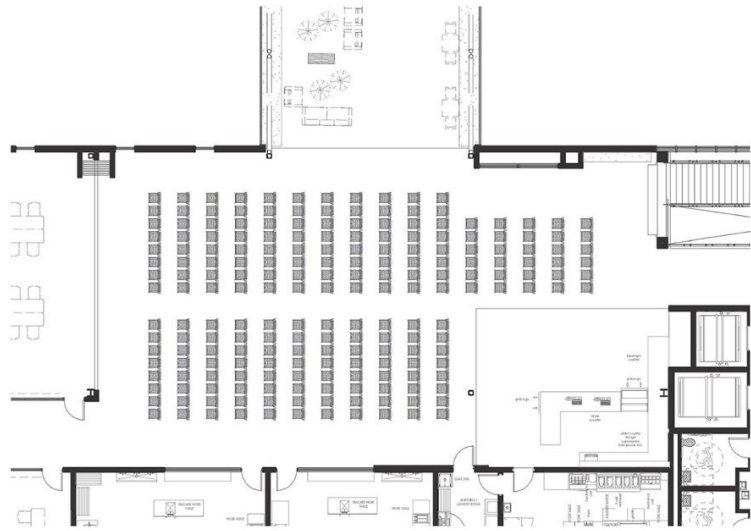
- 1 entry plaza
- 2 reception/ lobby
- 3 administration suite
- 4 labs (construction, HVACR, electrical, automotive, heavy vehicle, diesel)
- 5 storage/ support
- 6 chiller/ boiler
- 7 outdoor storage
- 8 exterior work yard
- 9 labs (oil and field services, machining/ metal, welding)
- 10 storage/ support
- 11 district IT suite



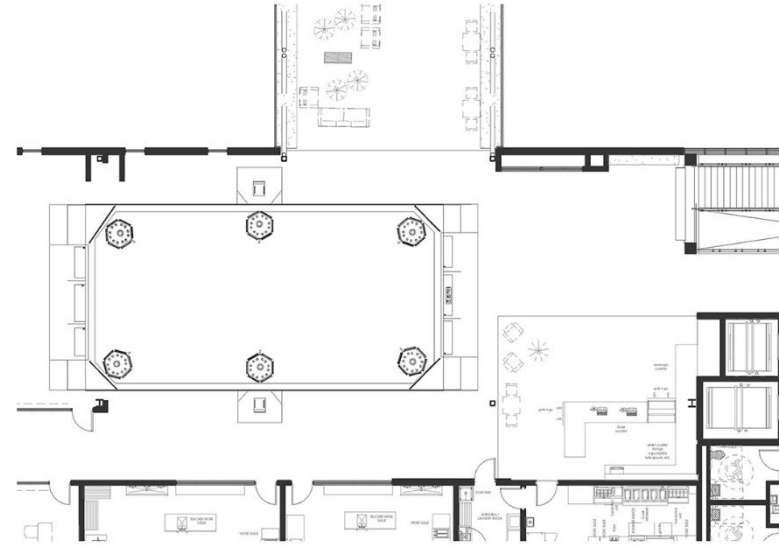
LEVEL 2

- 1 architecture studio
- 2 cafe
- 3 flex space
- 4 culinary labs
- 5 classrooms
- 6 robotics studio
- 7 innovation bridge
- 8 energy lab
- 9 information tech labs

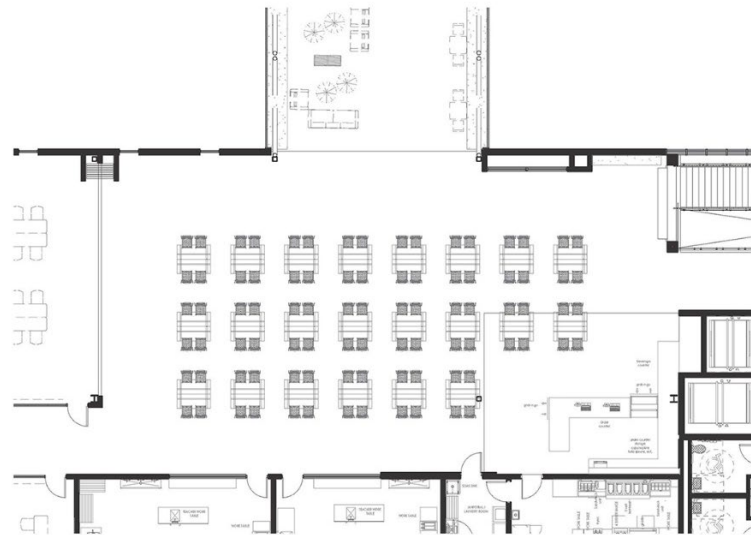




ASSEMBLY



ROBOTICS COMPETITION



DINING/ GAMING



Multi-use flex space provides opportunities for multiple activities



The cafe allows for quick grab and go options for students supplied by the culinary program



The building faces the prominent highway with branding and school pride displayed on the curtain walls

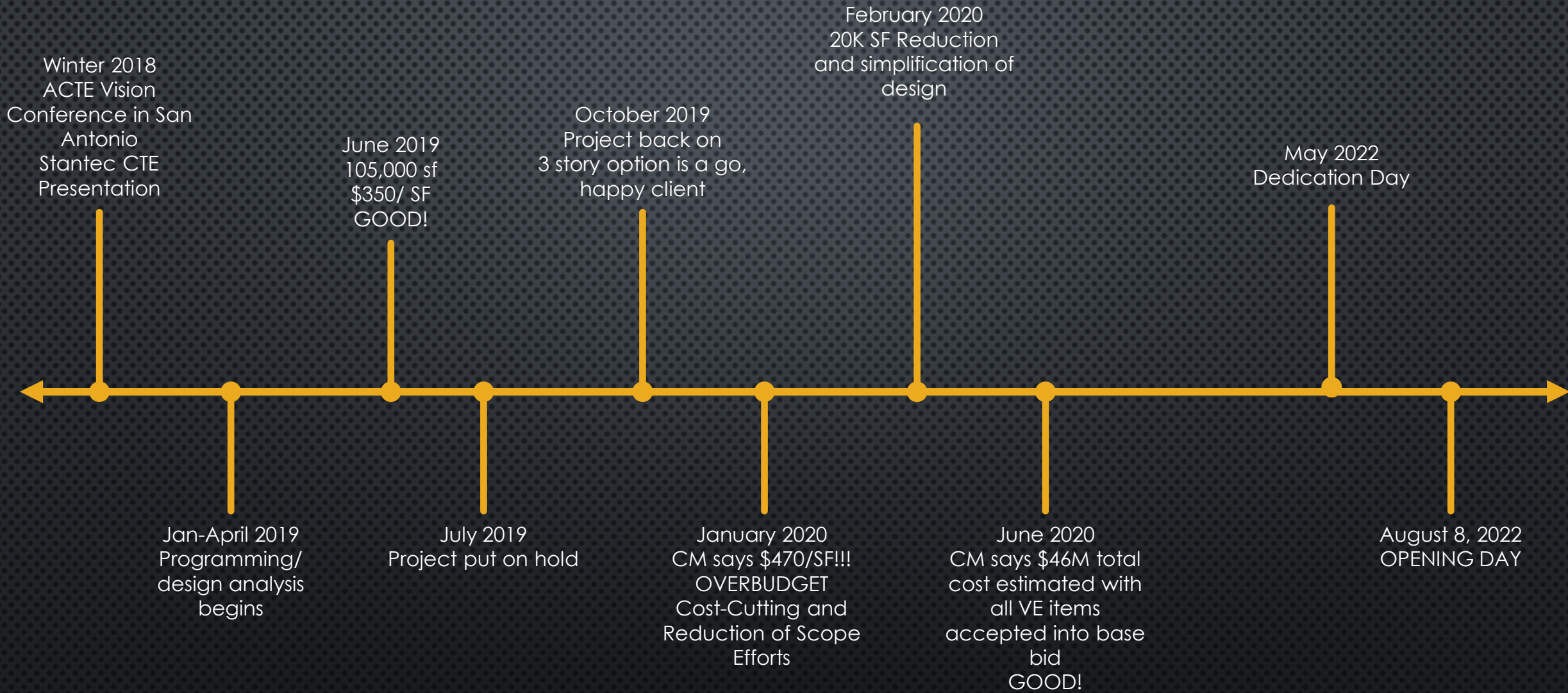


An entry plaza displaying student-built art and site elements provides a welcoming journey into the building



Sun shading provides a comfortable atmosphere for students to work

VII. Schedule + Budget



Program + Budget

FIRST CONCEPT	FIRST ESTIMATE	ACTUAL/FINAL
126K square feet CTECH 3 stories	93K square feet CTECH 2 stories	89K square feet CTECH 2 stories

Total Construction Cost	\$ 45,800,000	\$ 33,200,000	\$ 36,100,000
Soft Costs	\$ 4,200,000	\$ 3,400,000	\$ 2,750,000
Furniture, Fixtures Equipment, Technology	\$ 8,500,000	\$ 8,500,000	\$ 7,000,000
NMGRT	\$ 3,980,000	\$ 2,780,000	\$ 3,217,500
TOTAL COST	\$ 62,480,000	\$ 47,880,000	\$ 49,067,500

TCC: \$405_{psf}
TPC: \$551_{psf}

VIII. Finished Project!



80

Where Energy Meets Innovation
CTECH



801







CALLS AND REPORTS INCREASED OUTLET OF STRESS
2:11 PM
10/27/2022

CTECH

CTECH











JohnBean

EverStart

Snap-on

TRANSPORTATION

FESTO







CONSTRUCTION





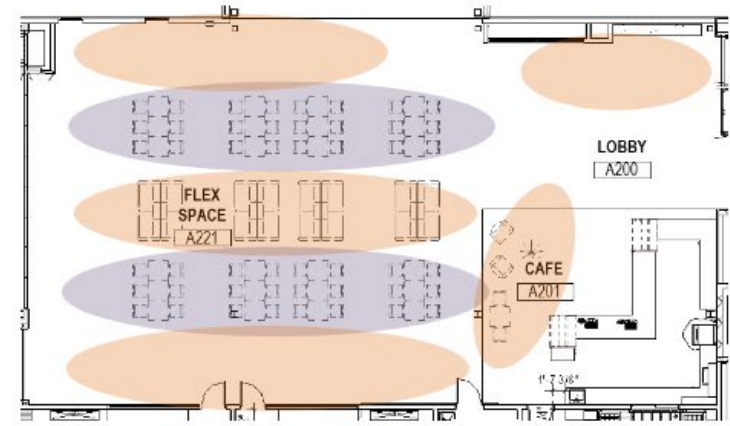


Part Three:
Realization

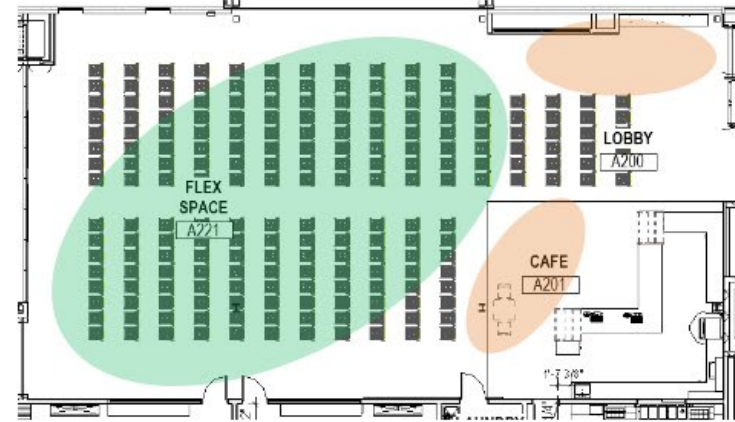
IX. Furniture, Fixtures & Equipment

Furniture, Fixtures & Equipment

Cafe and Flex Space



COLLABORATIVE CAFE



TRAINING/LECTURE



DINING/EVENT





Furniture, Fixtures & Equipment

Innovation Zone



GROUP WORK



Tabletop :
High Rise



Base/Edge : Platinum

SmithSystems Interchange Diamond Desk
T-5

COLLABORATIVE



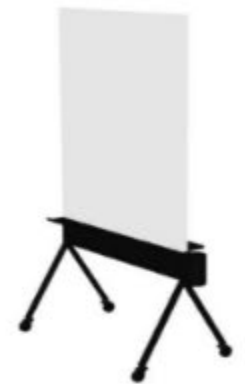
Top:
Butcher Block



Base:
Charcoal Grey

SmithSystems Planner table
T-4

MOBILE MARKER BOARDS



Knoll Scribe
M-1





CALLS AND REPORTS INCREASED OUTLET OF STRESS
2:11 PM
10/27/2022

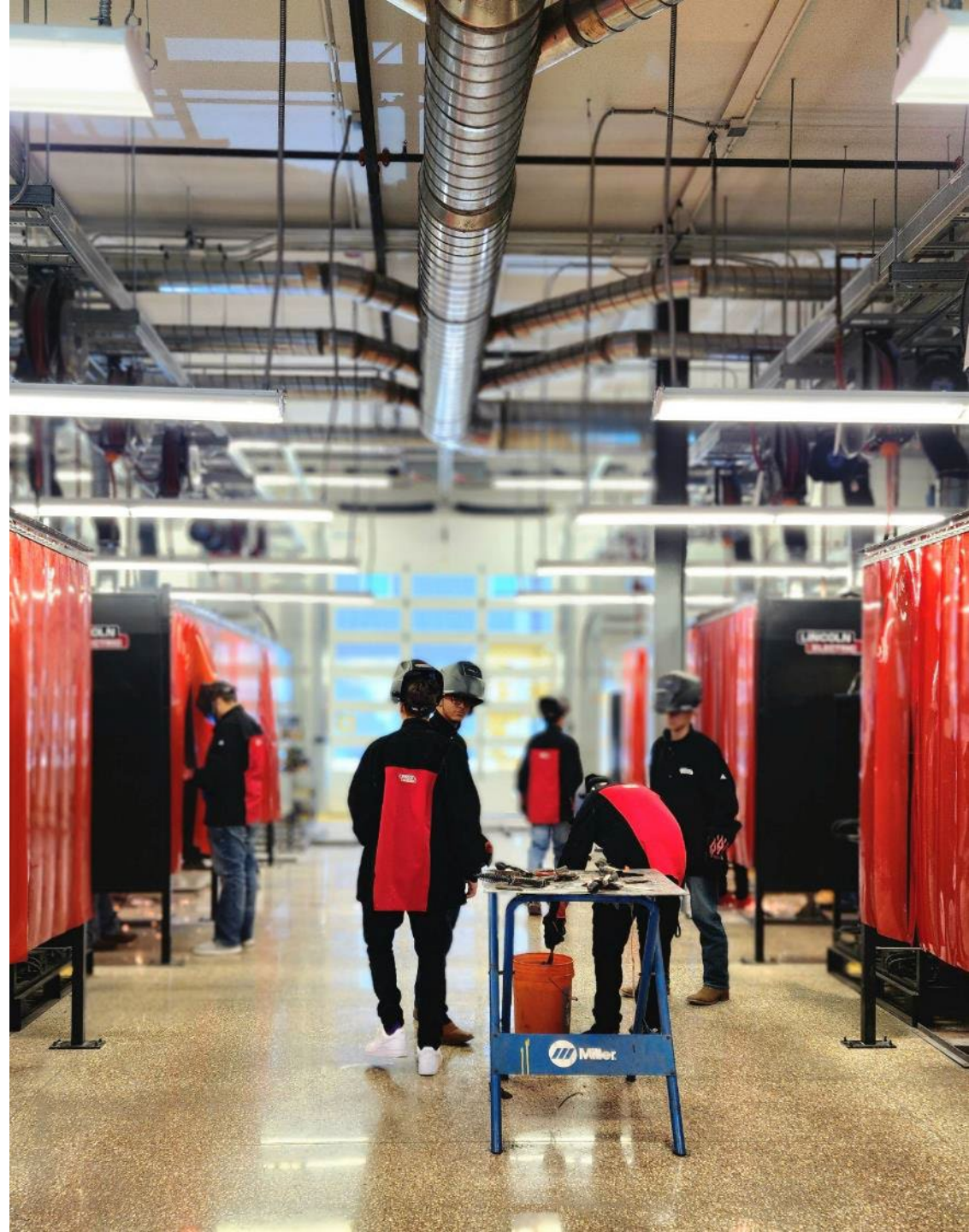
CTECH Program Equipment

Buy, Buy, Buy
Save, Save, Save



- Orders were placed by Christmas of 2021

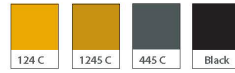




X. Branding

Branding

COLOR



LOGOTYPE with WINGS
Preferred for most formal, institutional applications



Logotype 1_Wings



Logotype 2_Wings_w_Identifier



Logotype 3_Wings_w_Tagline

LOGOTYPE with LG. WINGS
Preferred for most promotional applications

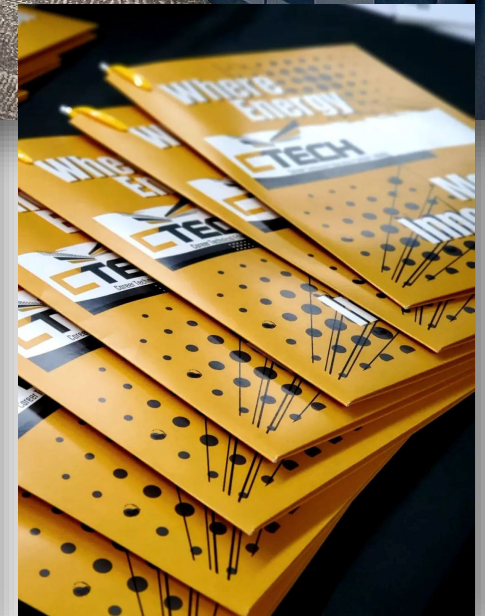


Logo 1_LgWings

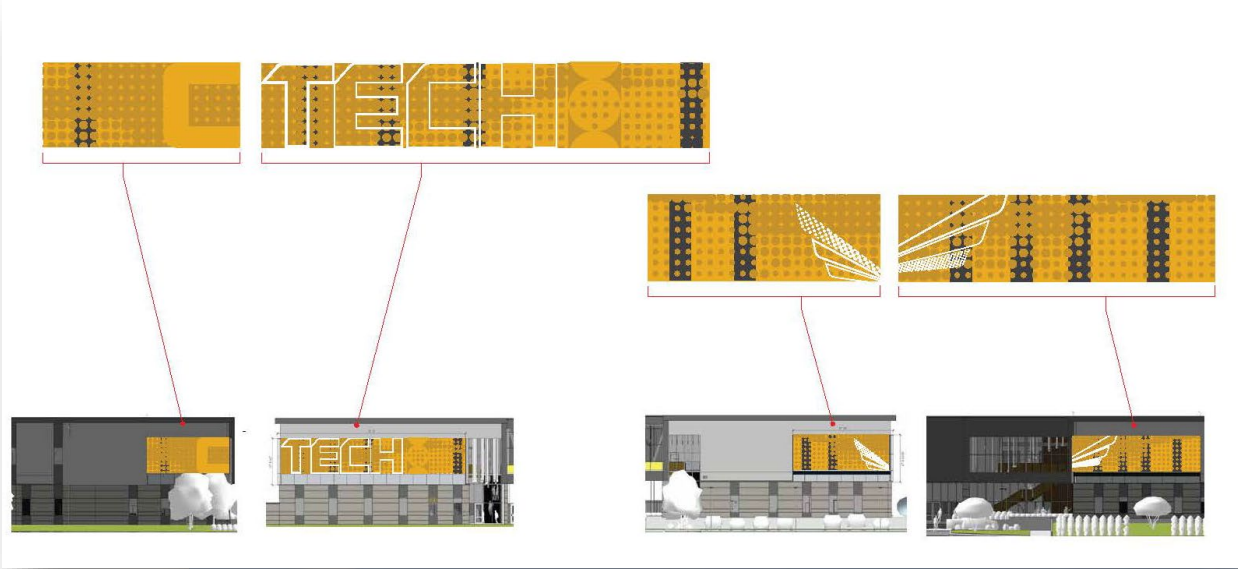
SINGLE WING with LOGOTYPE
Restricted to promotional applications



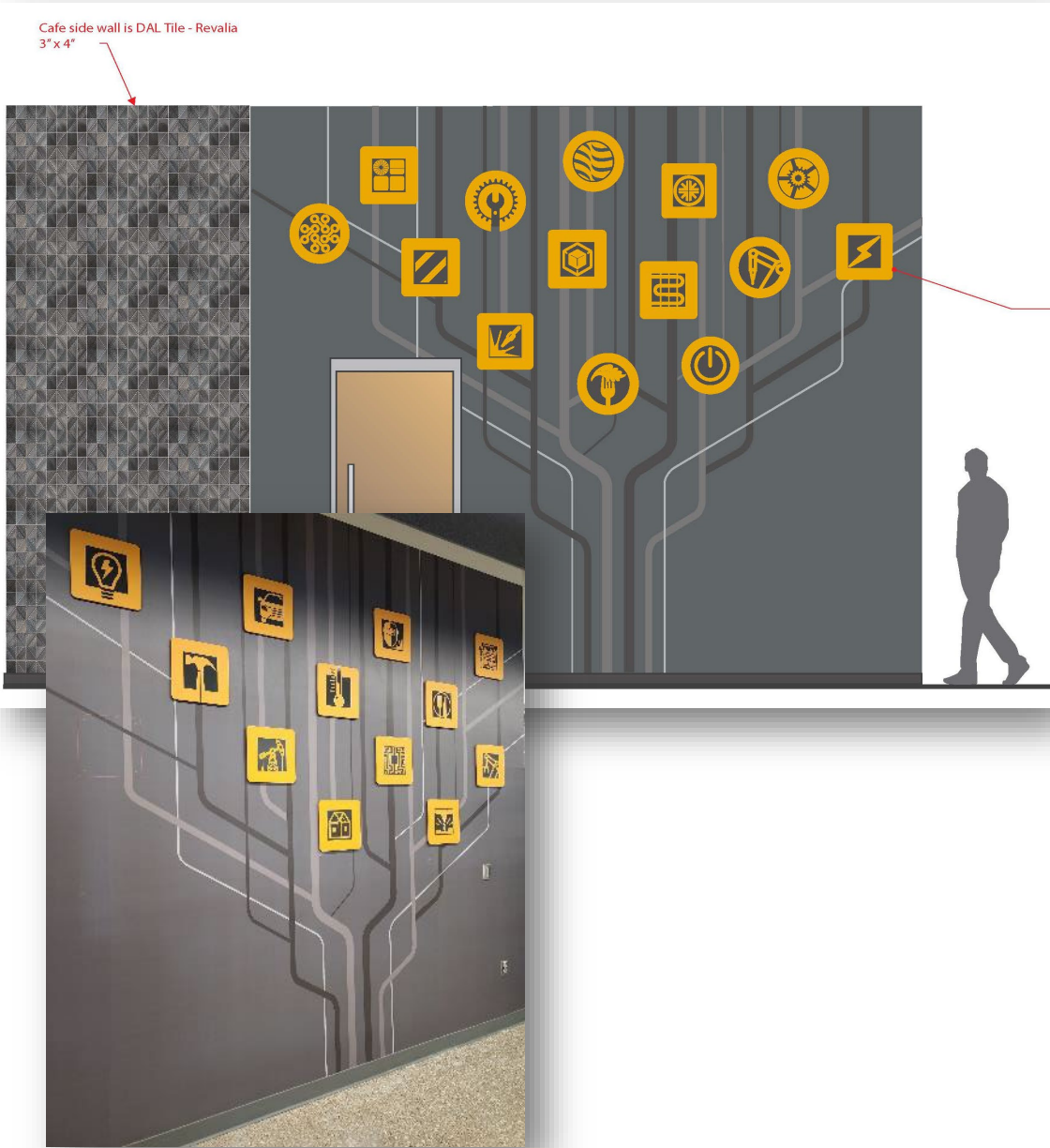
Single Wing_Logotype



Branding



Branding



Branding

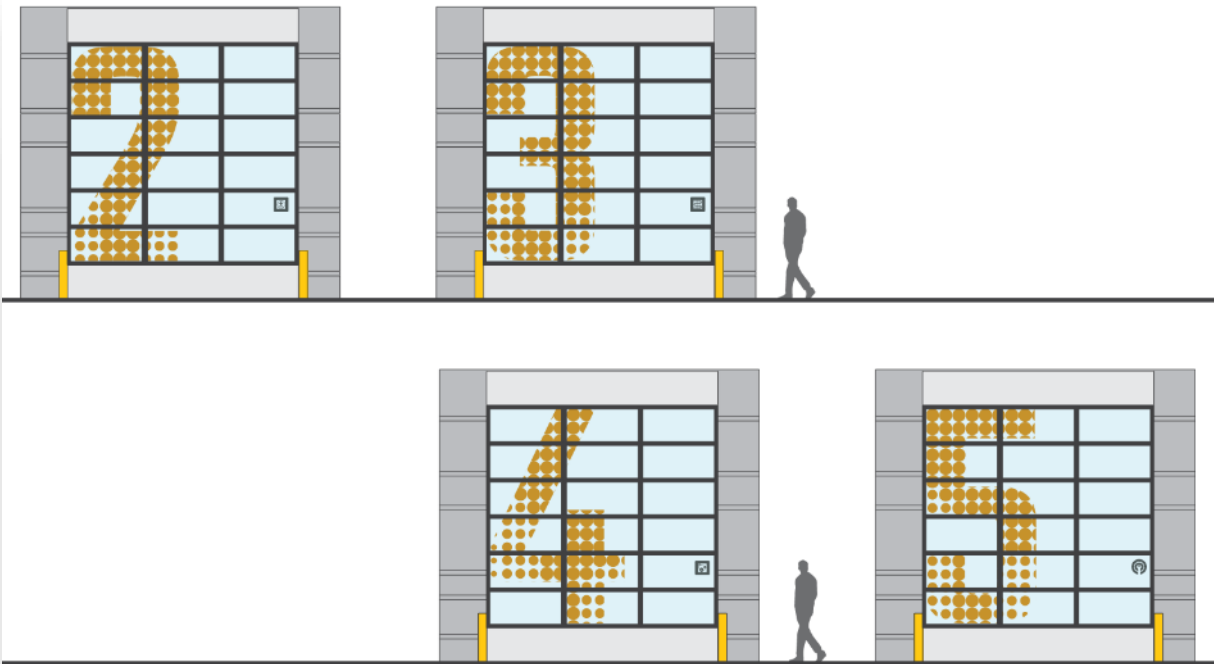
Example concept graphics for Bill Daniels Legacy



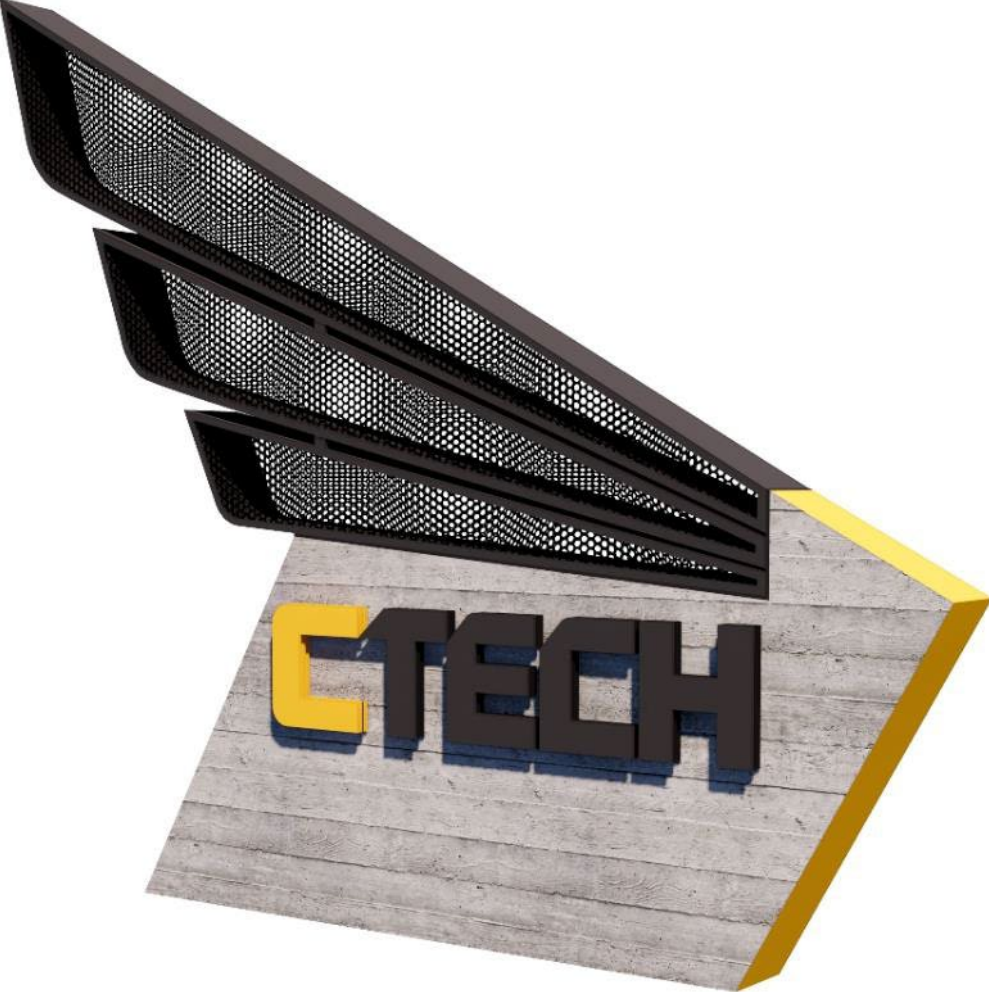
Vinyl graphics on back wall of seating niches - steel pipe specifications equate to diameter of opening



Branding



Branding



XI. Programs + Staff

CTECH Recruiting despite COVID



CTE Staff Recruiting + Development

Designing Our Staff (2019 -2020) Prior to Hiring – Recruiting

- CTE licenses (800 level)
- Stipends for Industry Certification (\$10,000)
- Training and Planning
 - Industry
 - “Play School”



CAREER & TECHNICAL EDUCATION CENTER OF HOBBS

WE'RE HIRING!

POSITIONS AVAILABLE

- Architecture Teacher
- HVAC Teacher
- PLC/Automation Teacher
- Energy Teacher
- Automotive Teacher
- Machining Teacher
- Construction Teacher
- Math Teacher
- Digital Media Teacher
- English Teacher
- Information Technology Teacher

For More Information and To Apply Online @ hobbsschools.net



CTE Staff



Scott Lynskey

 Construction Instructor



Sarah Callaway

 Culinary Instructor



Cody Carter

 Welding Instructor

CTE Staff



CTE Staff

Hire All Staff by 2021/2022



CTE Students

Recruit Students by
2021/2022
School Year

Regional School



XII. Dedication Day!



Grand
OPENING
A Community Event

CTECH:
Career and Technical Education Center of Hobbs
Special Guest: Mike Rowe, Host of Dirty Jobs

May 5th, 2022
11:30AM

801 N. Marland Blvd. Hobbs, NM.



SkillsUSA
NEW MEXICO

NATIONAL
signing day!

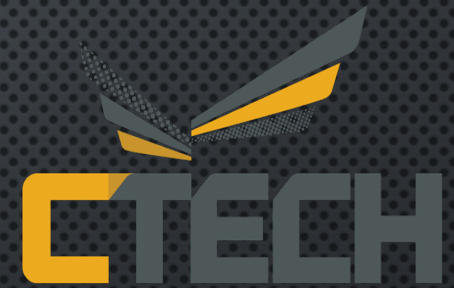


May 5
9:3
CT



Questions + Answers

We invite you to check out our
CTE Spotlight Page:



<https://www.stantec.com/en/ideas/spotlight/conference/acte>

Hobbs CTECH Facebook Page:
www.facebook.com/CTECHobbs/

<https://fb.watch/jKOqjbUV2H/>