

A photograph of three students in a workshop setting. A young man with blonde hair and a beard, wearing a dark blue shirt, is leaning over a laptop. A young woman with long brown hair, wearing a colorful plaid shirt, is also looking at the laptop. Another young woman with long brown hair and glasses, wearing a light grey shirt, is standing behind them, smiling and pointing at the laptop. On the table next to the laptop is a small robot with a blue base and various electronic components. The background shows shelves with various tools and equipment.

# Career Technical Education

*Preparing Students for the Future*

**A4LE**

Northeast Regional Conference

March 29, 2019

# Moderators



**Laura Wernick**, FAIA, REFP, LEED AP  
Senior Principal,  
HMFH Architects



**Carl Franceschi**, AIA, LEED AP  
President,  
Drummey Rosane Anderson

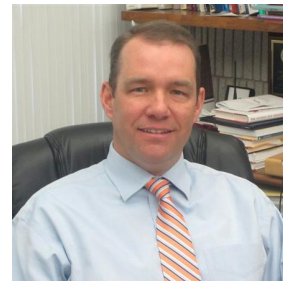
# Panelists



**Jason McCandless**  
Superintendent,  
Pittsfield Public Schools



**Lisa Danley**  
Director,  
Dover Regional Career Technical Center



**Robert P. Sanborn III**  
Superintendent/Director,  
Cape Cod Regional Tech. High School

# Learning Objectives

- Understand learning synergies resulting from the integration of career tech programs and academic spaces from educators
- Understand different, innovative models that use the physical environment to support blending career tech and academic programs
- Explore with educators how they are integrating vocational and academic curriculum
- Understand some of the regulatory and historic barriers that need to be overcome to more fully integrate academic and vocational programs

# Agenda

- Background
- Architectural response
- Educational goals
- Discussion



Taconic High School

Pittsfield High School

Pittsfield

# Taconic High School

Pittsfield, MA

Comprehensive High School  
1 of 2 Pittsfield Public High Schools  
920 students including 500 CTE students  
246,000 square feet

## Career Technical Programs

15 programs reduced to 12

Automotive Refinishing  
Automotive Technology  
Health & Medical Assisting  
Carpentry  
Culinary Arts  
Graphic Communications  
Manufacturing & Machine Tech  
Metal Fabrications  
Cosmetology  
Horticulture  
Electrical  
Early Childhood Care





e Rd



**Taconic High School**



Provincetown

Cape Cod Tech

Harwich

Mashpee

# Cape Cod Regional Technical School

Harwich, MA

Career Technical High School

12 Town region

650 students

221,000 square feet



## Career Technical Programs

17 programs reduced to 15

Automotive Collision

Automotive Technology

Carpentry

Cosmetology

Culinary Arts

Dental Assisting

Design & Visual Communications

Electrical

Engineering

Health Technology

Horticulture

HVAC

Information Technology

Marine Services

Metal Fabrications

Plumbing



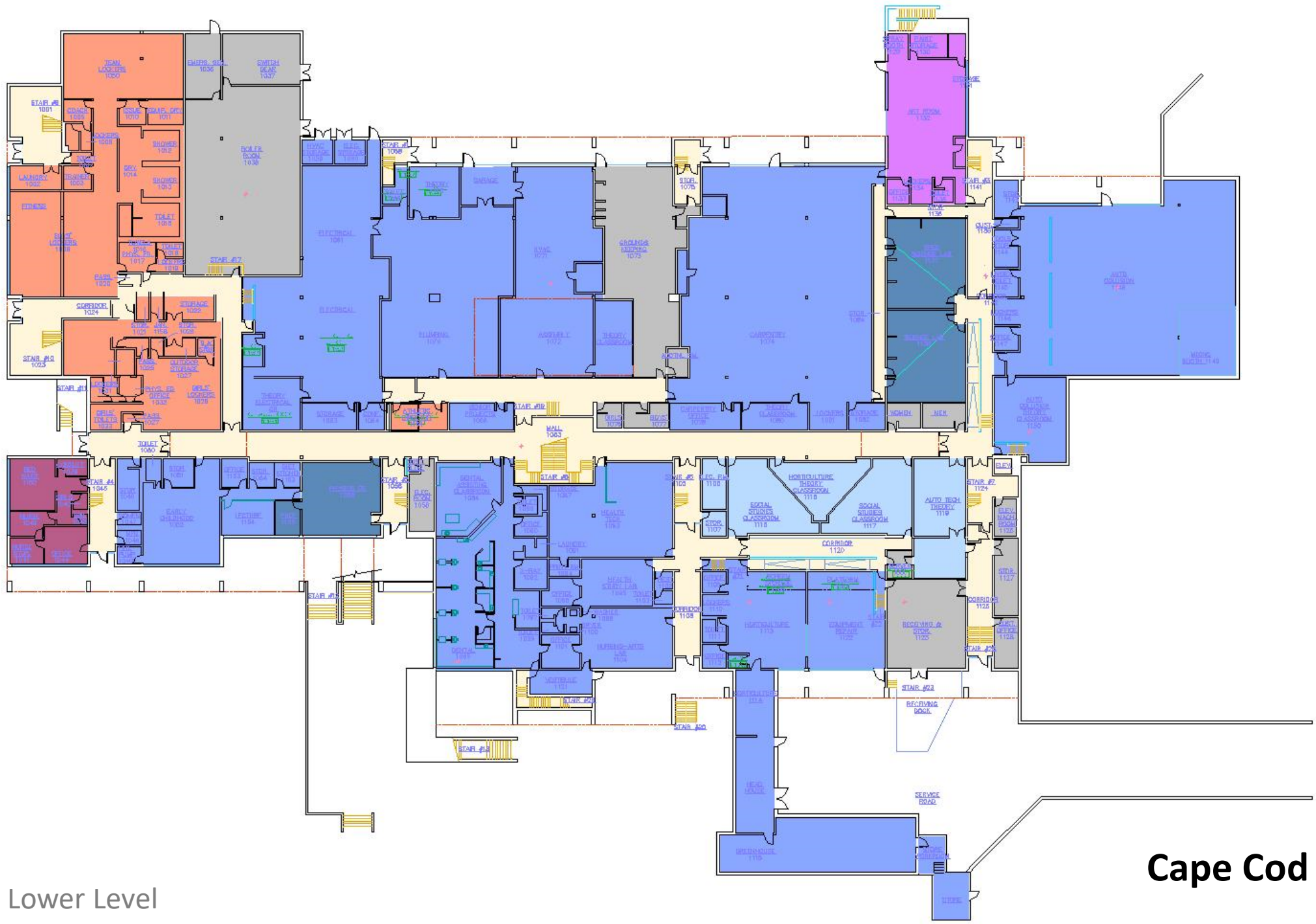
Cape Cod Technical  
High School

Mid-Cape Hwy

124

Long Pond Dr

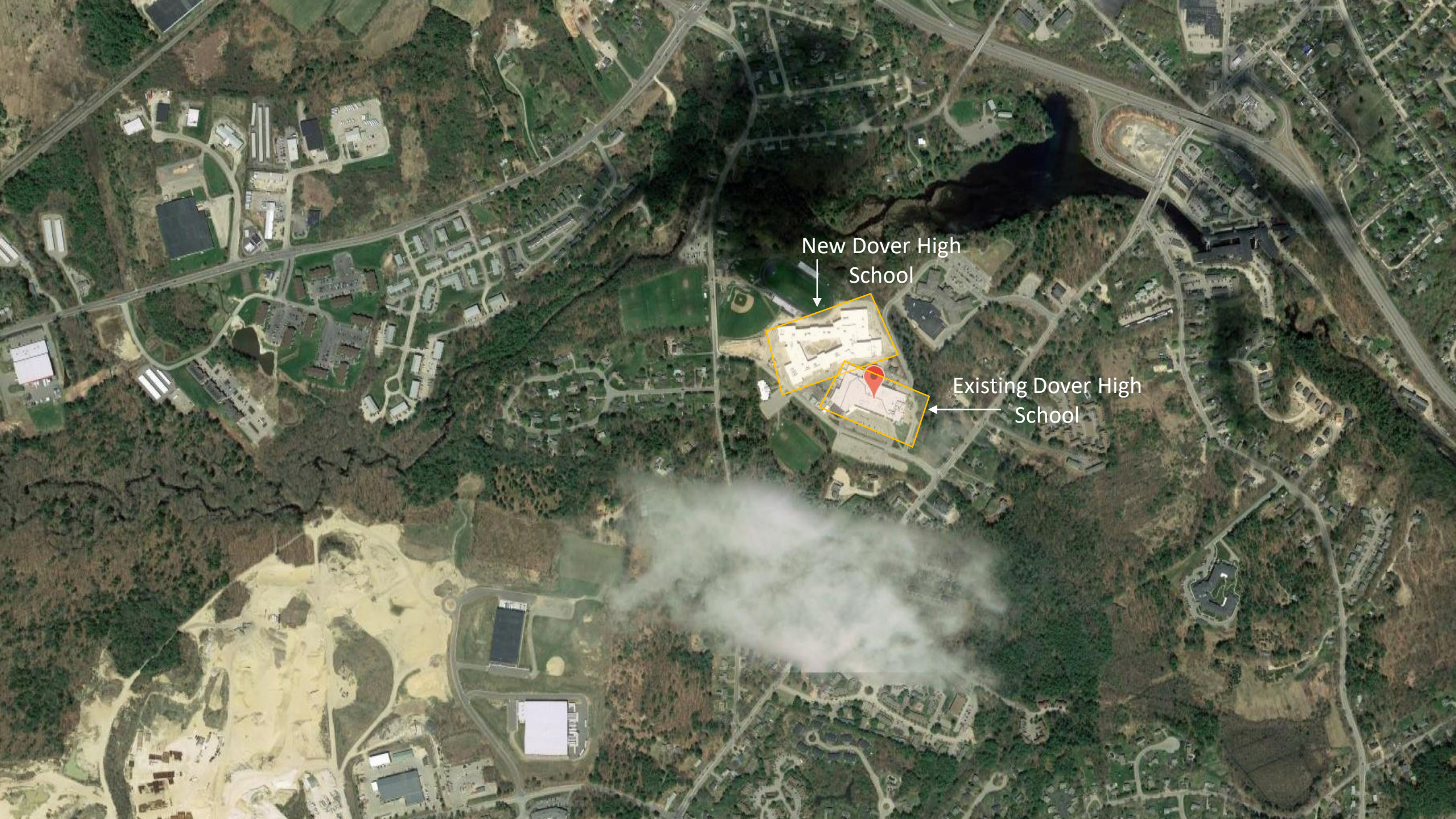




Lower Level







New Dover High  
School

Existing Dover High  
School

# Dover High School & Career Tech. Center

Dover, NH

High School and Regional CTC

1,500 students

310,000 square feet



## Career Technical Programs

19 programs

Animal Science

Automotive Collision Technology

Automotive Technology

Biomedical Science

Building Construction Technology

Business

Computer Programming

Computer Systems Networking

Cosmetology

Culinary Arts

Electrical Technology

EMR/WFA and EMT

Fire Science

Health Science

Marketing

Naval Junior Reserve Training

Pre-Engineer

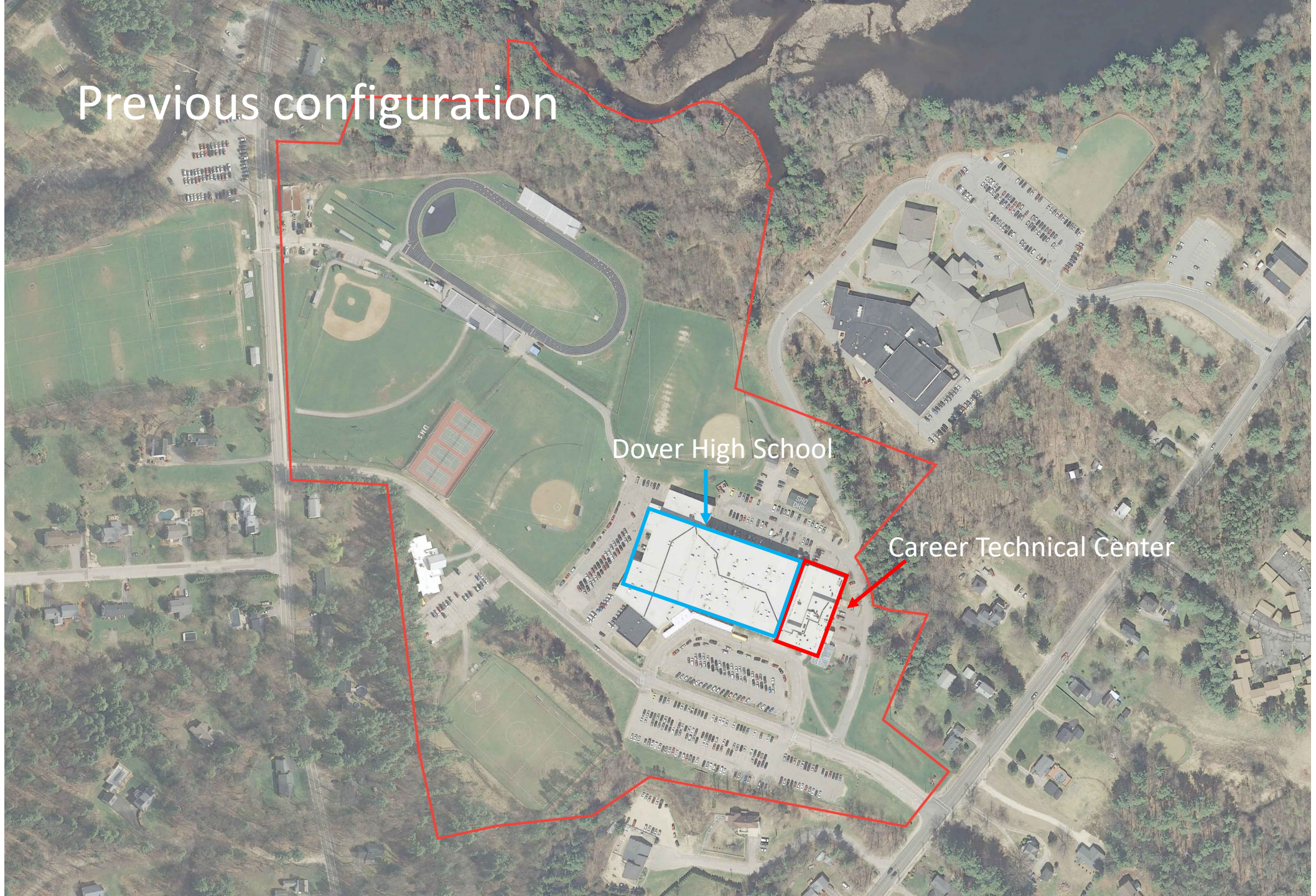
Sports Medicine

Welding

Previous configuration

Dover High School

Career Technical Center







# Key Educational Goals

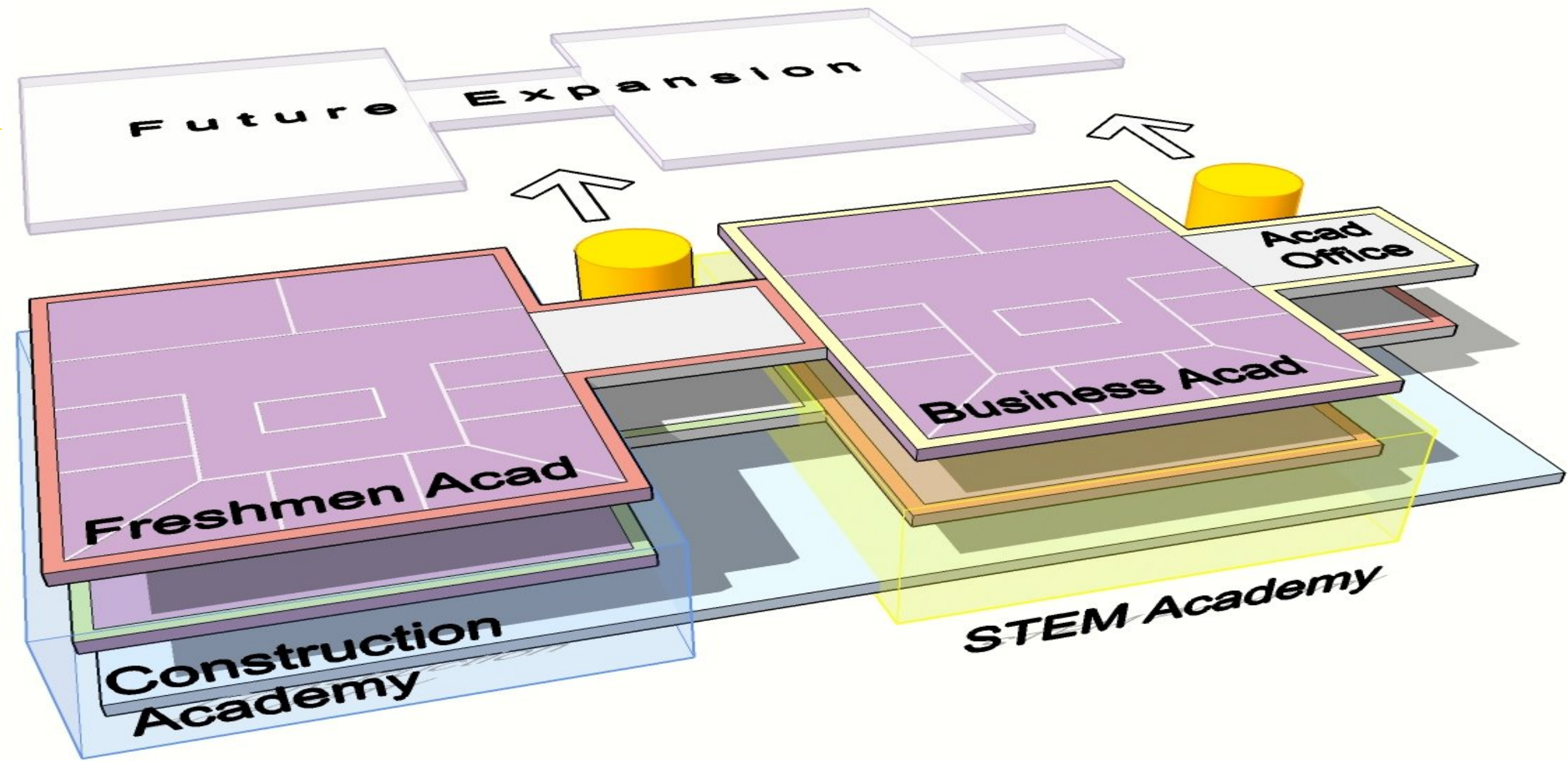
- Flexibility
- Integration – *one school,  
two curricula*
- Collaboration

# Flexibility

# Integration – *one school, two curricula*

# Collaboration

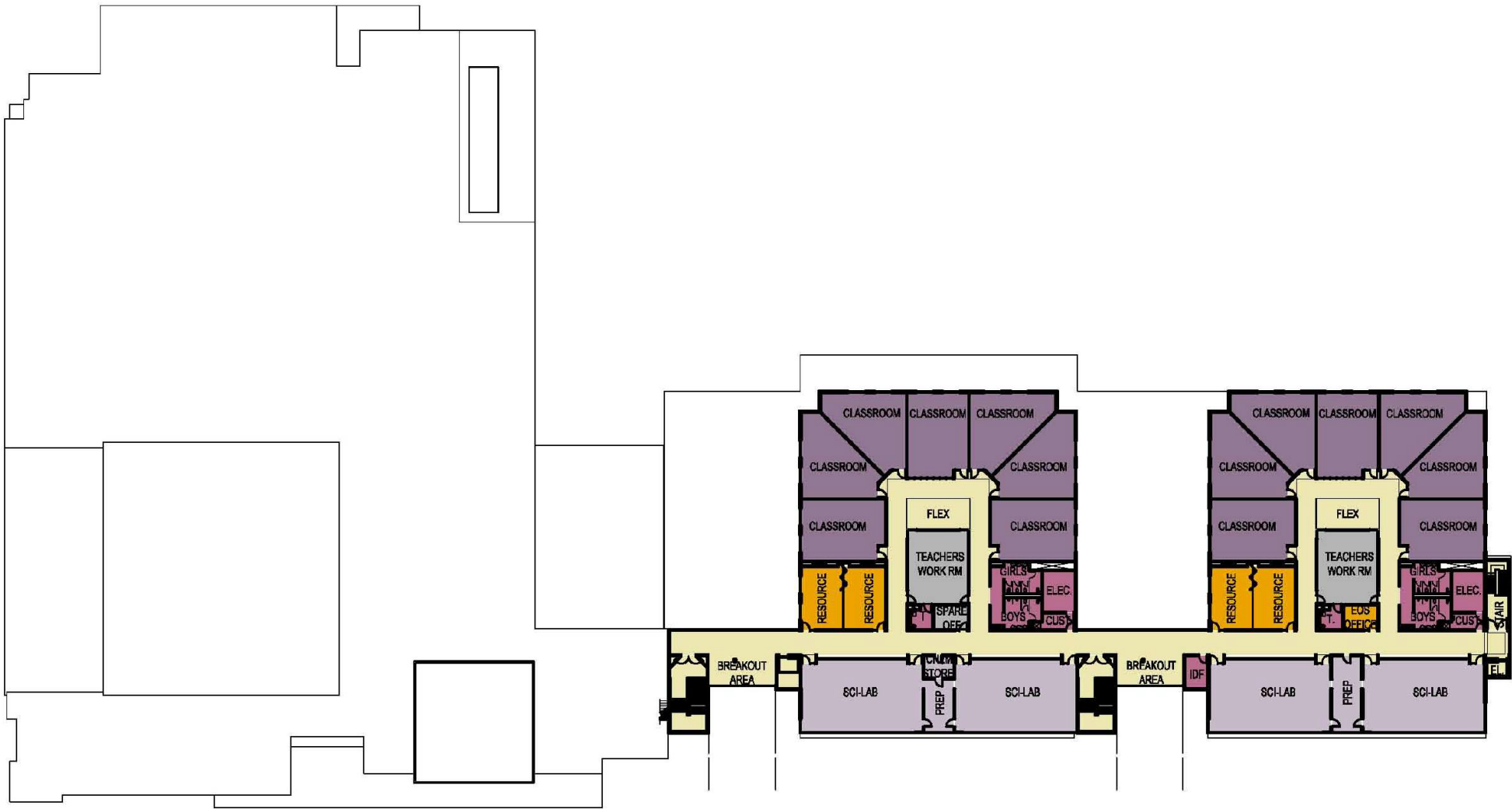








## SECOND FLOOR PLAN



PROGRAM LEGEND			
■ ADMINISTRATION	■ MEDICAL	■ ART	■ MUSIC
■ AUDITORIUM	■ PHYSICAL ED.	■ CLASSROOMS	■ SCIENCE
■ CORE	■ SHOP	■ CORRIDOR	■ SPED
■ KITCHEN			



THIRD FLOOR PLAN



TACONIC



**Cape Cod Regional Technical School**

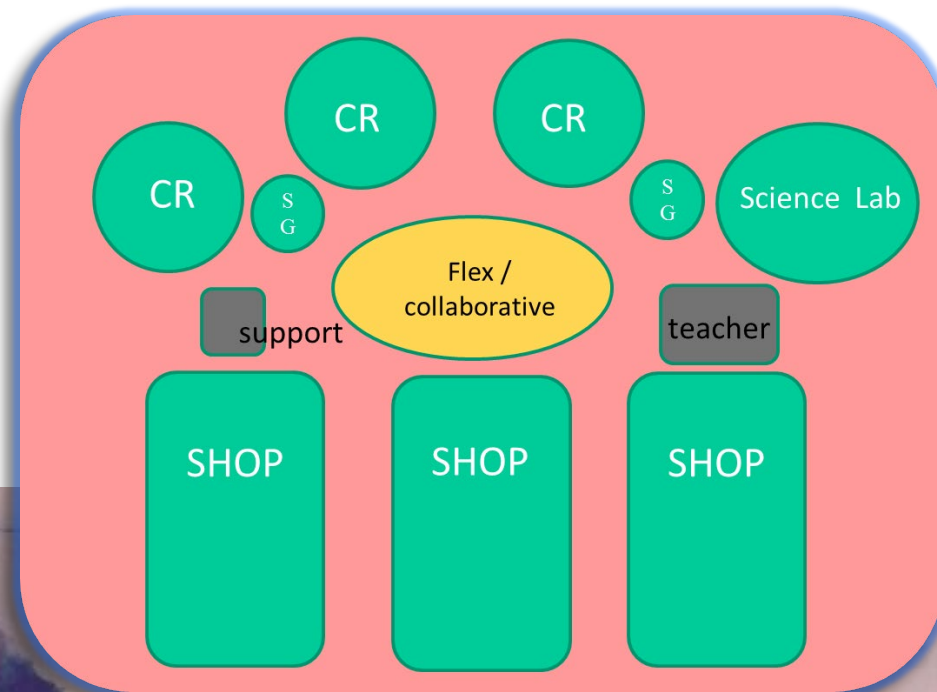
# Key Educational Goals

Flexibility

Collaboration

Project-based learning

Integration / cross-discipline







Upper Floor









**Dover High School and Regional Career Technical Center**

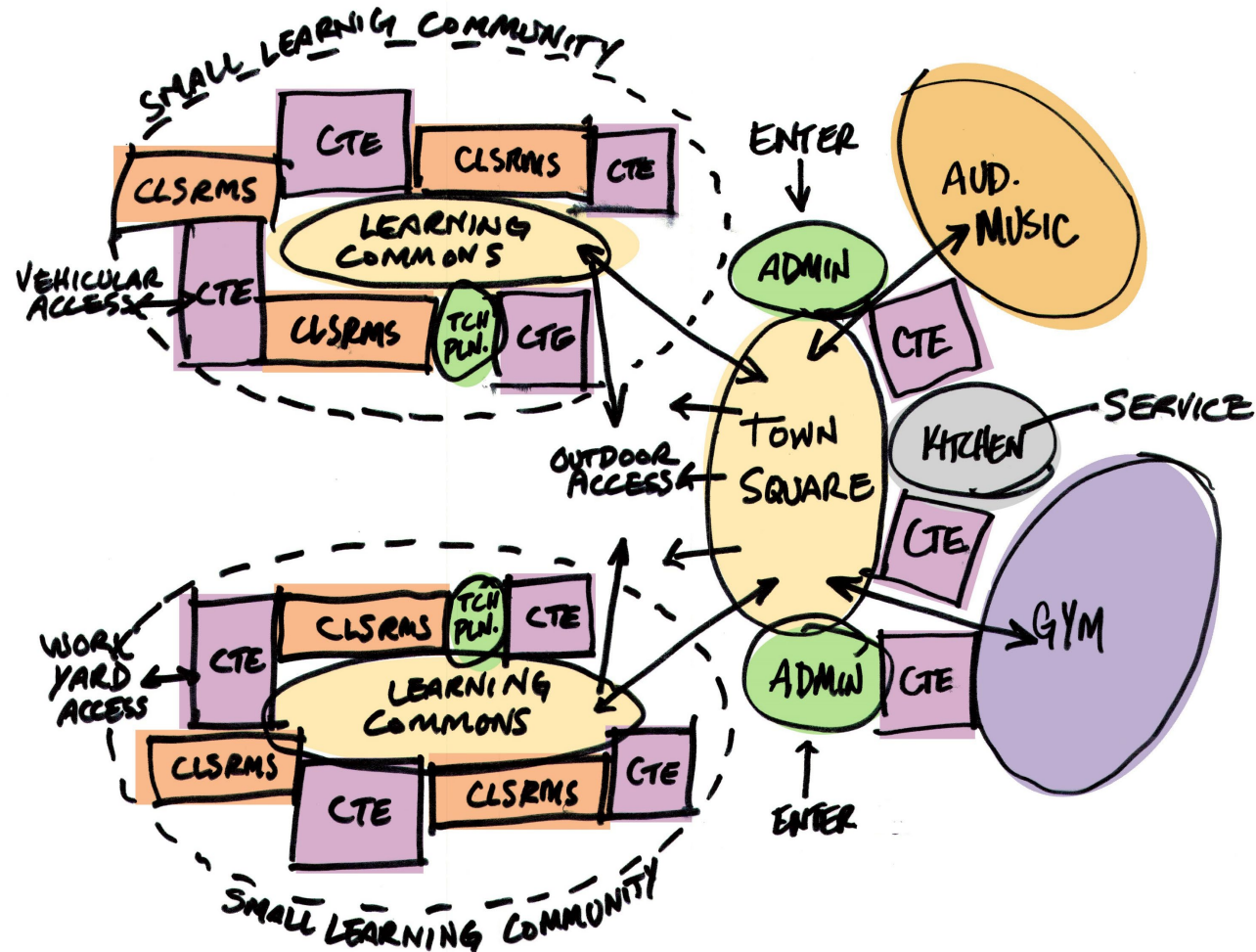
# Key Educational Goals

Integrated HS and CTE

Hands-on Learning Opportunities throughout

“Future-proof” and flexible

Town square for all students and entire community





**DOVER HIGH SCHOOL & REGIONAL CAREER TECHNICAL CENTER**  
Dover, NH  
**LOWER LEVEL FLOOR PLAN**





**DOVER HIGH SCHOOL & REGIONAL CAREER TECHNICAL CENTER**  
 Dover, NH  
**SECOND FLOOR PLAN**

