

Mid-Coast School of Technology

YOUR SCHOOL YOUR VISION

Join us in a conversation about the facilities, programs, and future of MCST

Co-Hosted with Lavallee Brensinger Architects



www.mcst8.org

Forums held at 7pm on the following dates

Oct 9, 2014
Oceanside
High School
Cafeteria
East 400 Broadway
Rockland

Oct 14, 2014
Camden Hills
Regional HS
Lecture Hall
25 Keelson Drive
Rockport

Oct 15, 2014
Medomak Valley
High School
Cafeteria
320 Manktown Road
Waldoboro

Oct 16, 2014
Mid-Coast School
of
Technology
1 Main Street
Rockland

A Community Building for Education



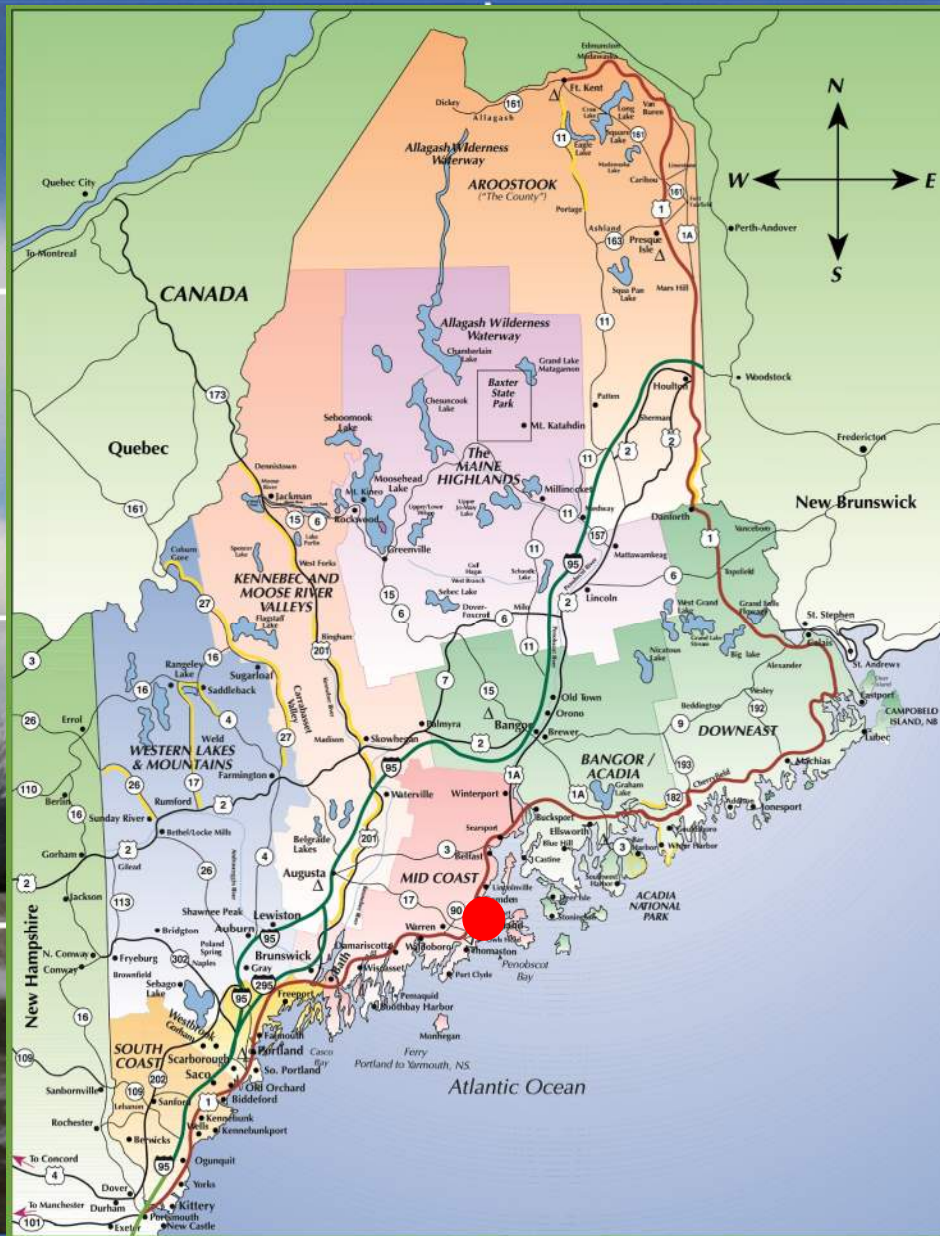
Background

Explore the Possibilities

Making it Work

LAVALLEE | BRENSINGER ARCHITECTS

A Community Building for Education



LAVALLEE | BRENSINGER ARCHITECTS

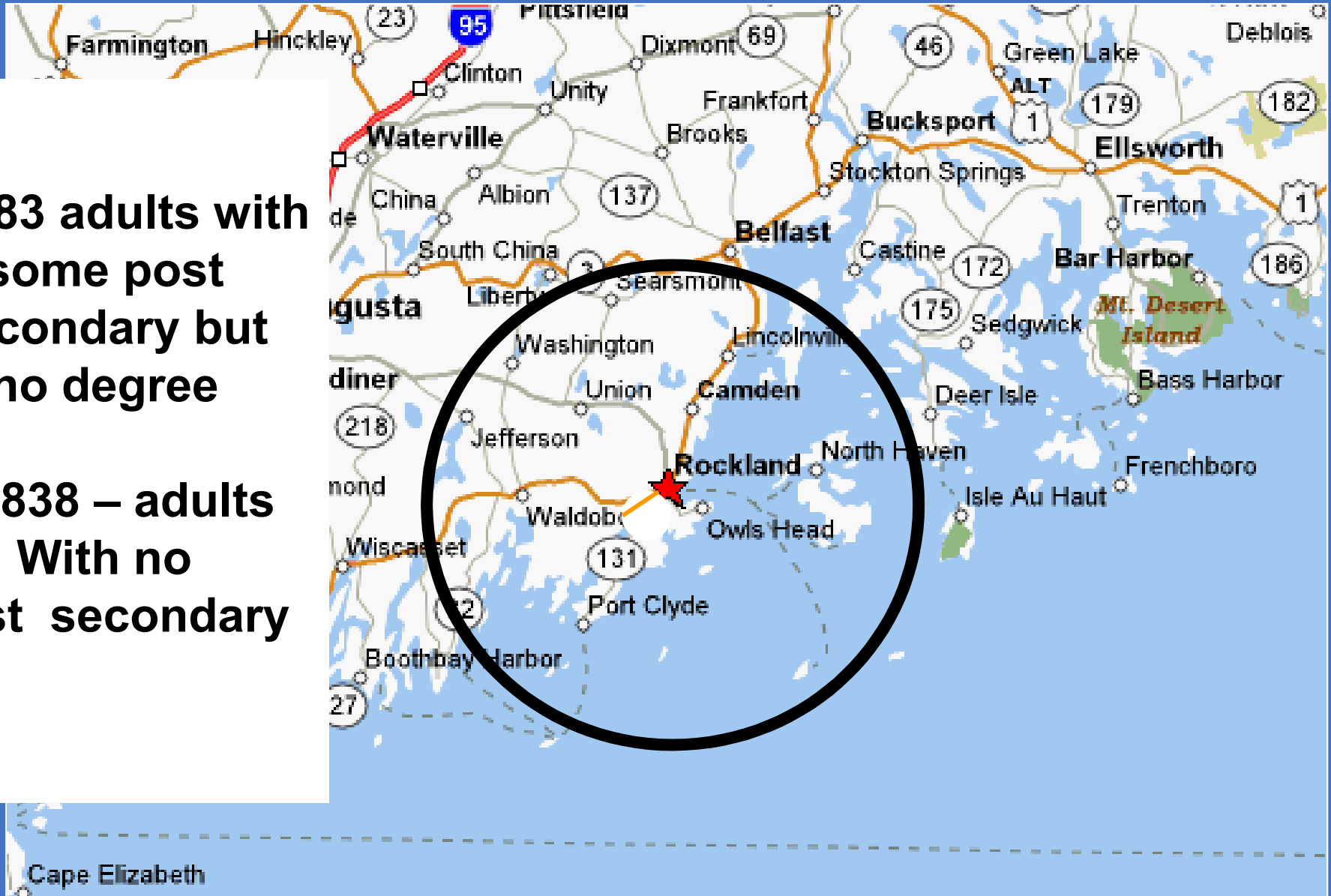
A Community Building for Education

Why?

Cumulative Regional Population 30 mile radius 102,188 (ave Age 42)

**17,983 adults with
some post
secondary but
no degree**

**35,838 – adults
With no
Post secondary**



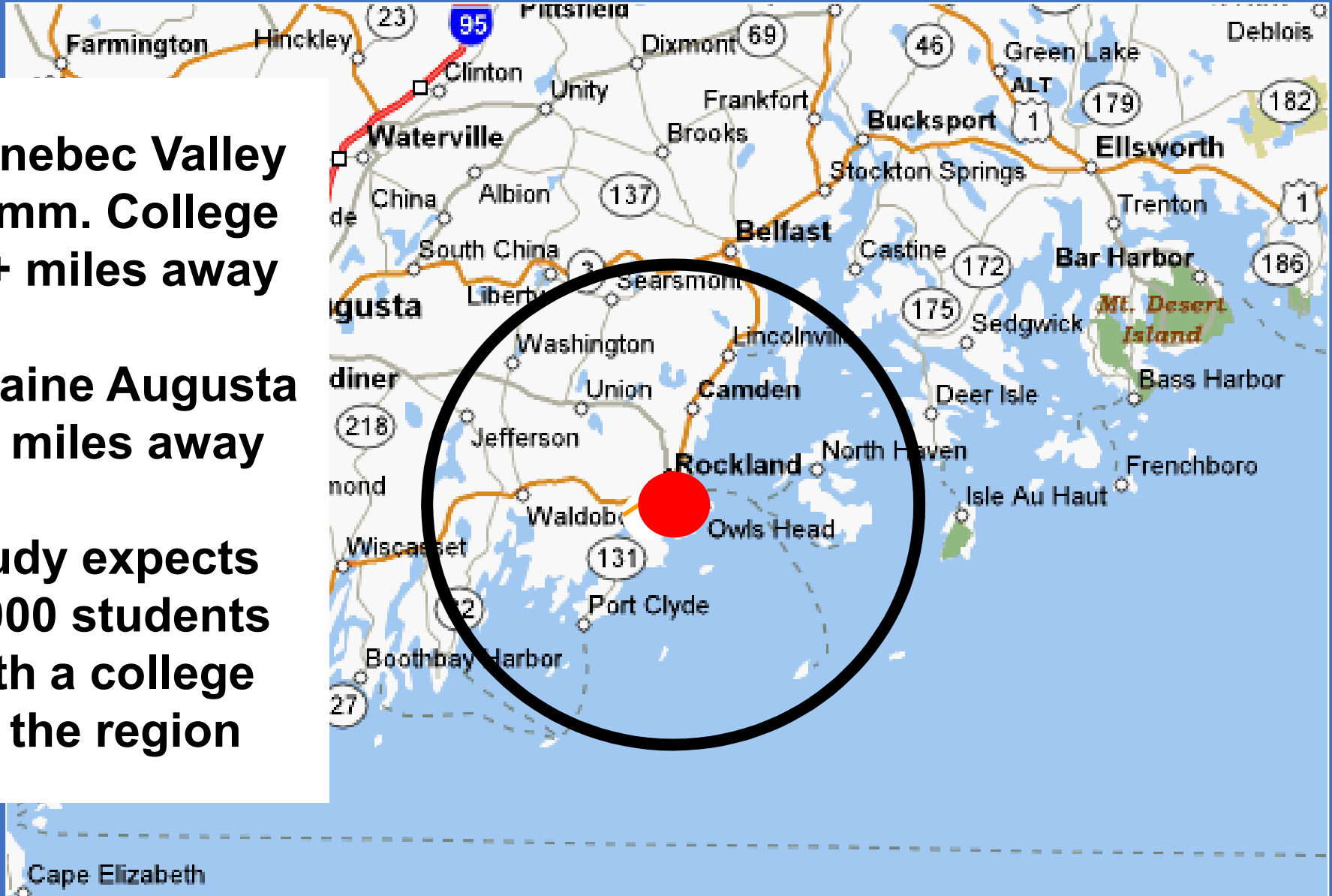
Why?

Commuter access to Higher-Ed and Post-Secondary Education

**Kennebec Valley
Comm. College
90+ miles away**

**U Maine Augusta
50 miles away**

**Study expects
2,000 students
with a college
in the region**

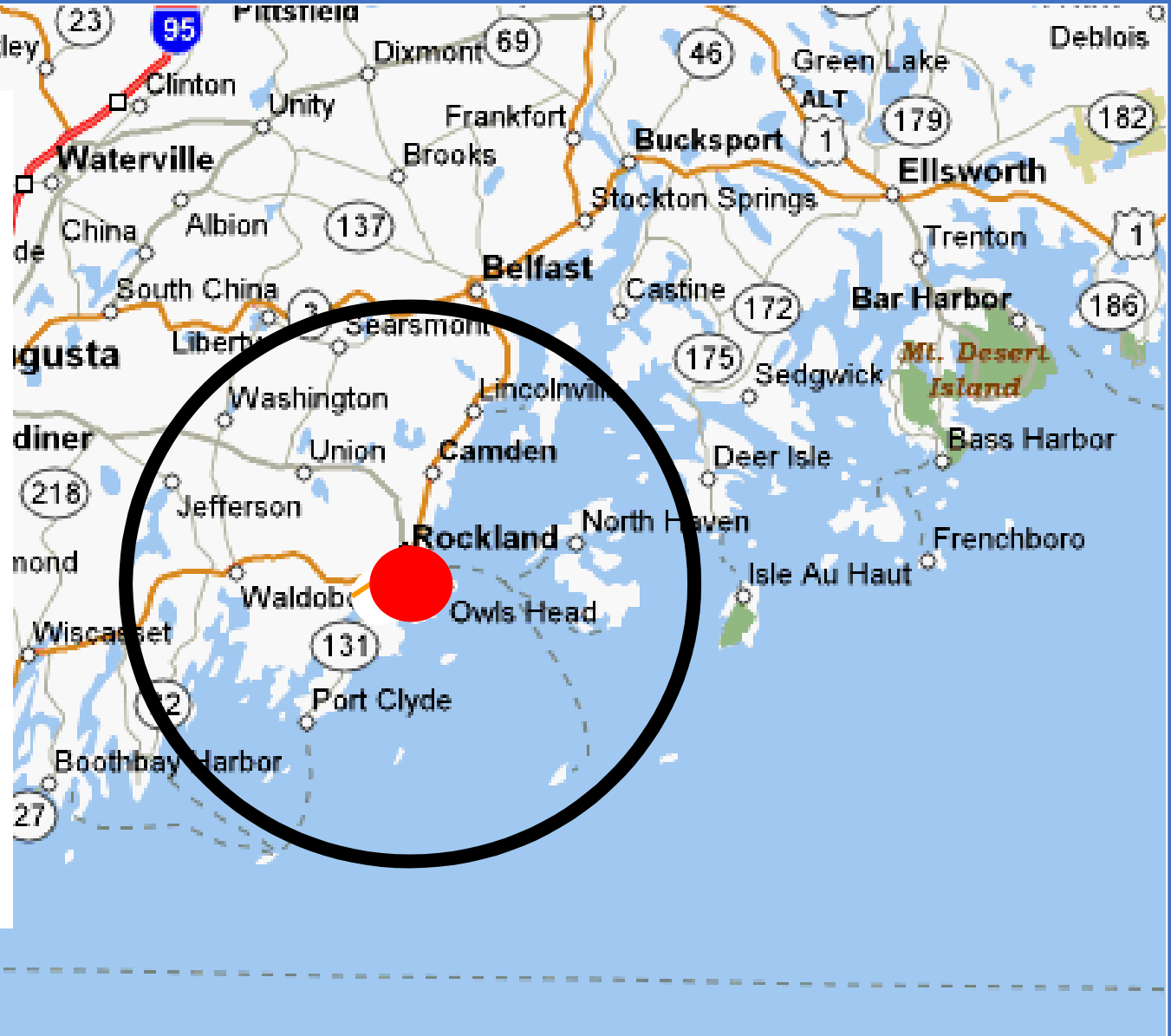


Why?

Population Growth versus Population Decline

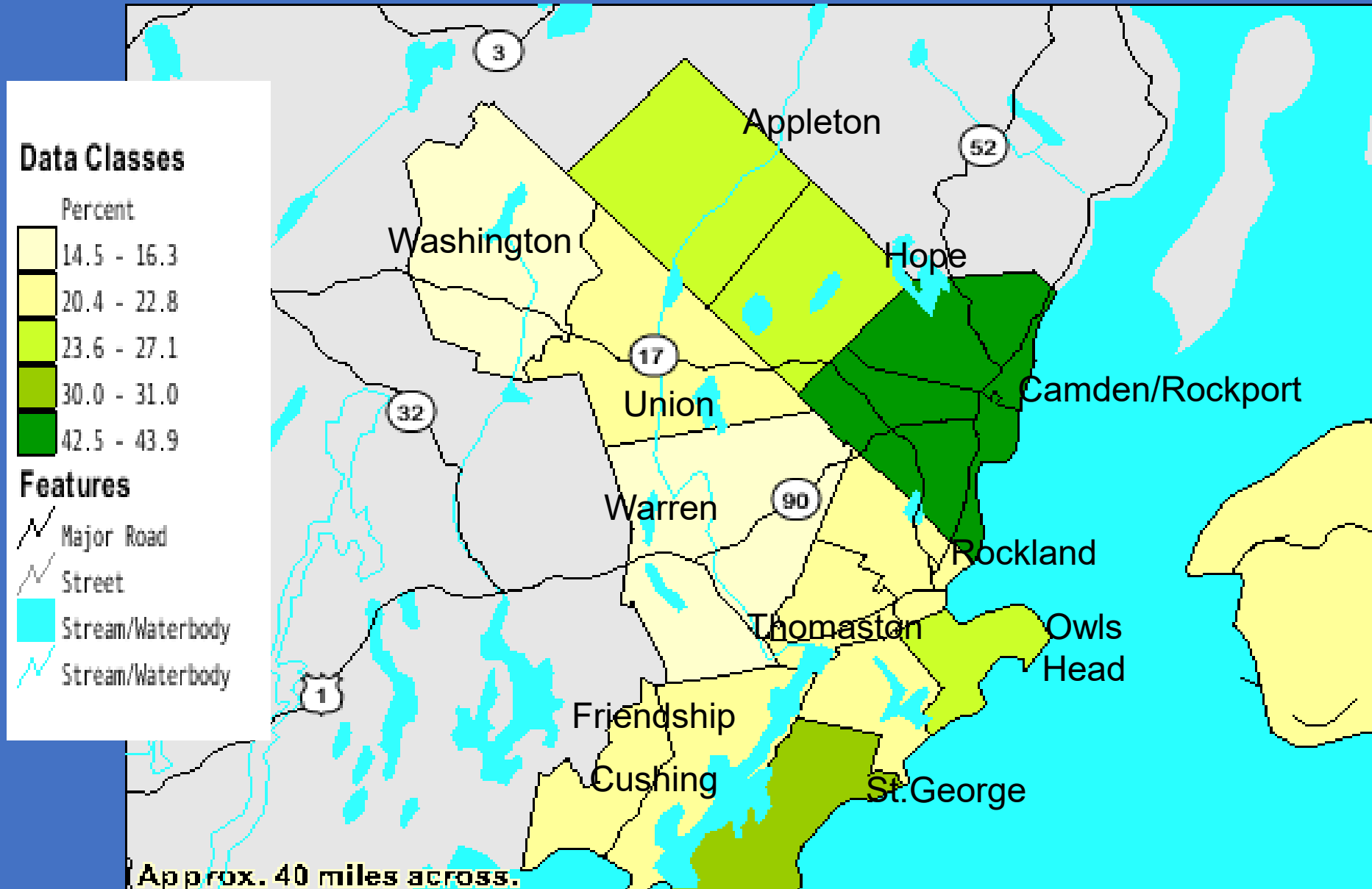
**10% growth in
Population
over the past
10-years**

**24% decline in
Population
over the past
10 years
(18-34 year olds)**



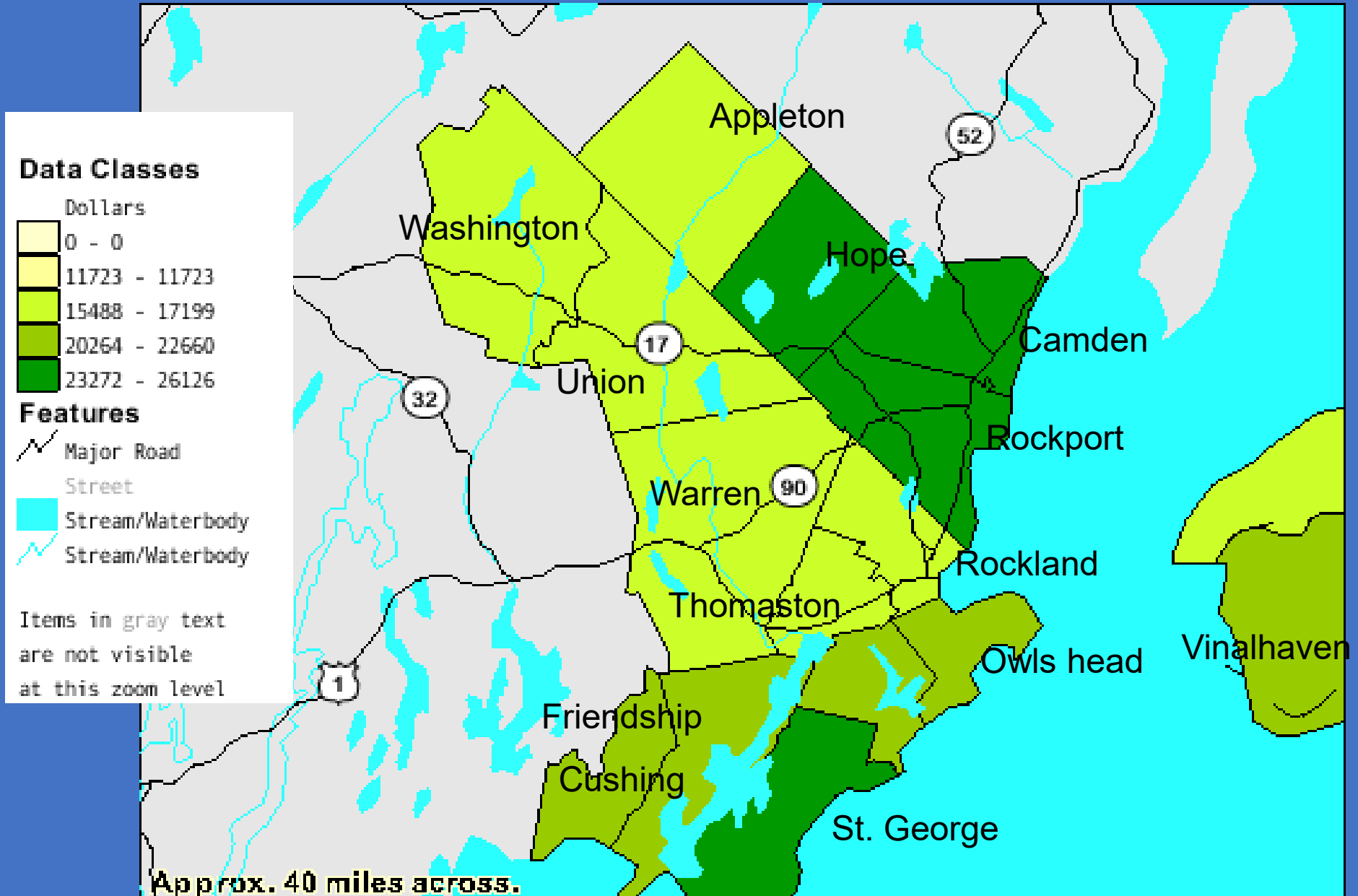
Why?

Knox County – Percent of Population 25 and older with Bachelor's Degree or Higher



Why?

Knox County – Per Capita Income by Town Knox Co Per Capita income: \$19,981



Why?

- Economic Transition of Mid-coast Maine
- Education / Skills / Career Transition
- Expanded Access to Higher Ed
- Transition to Knowledge-based Economy
- Life-long Learning for Success
- Business and Opportunity Growth
- Retain the Population...in a Great Place to Live
- “We need a College”

“....I can hire 40 people today, and have had no applicants through recruiters...” *Back Cove Yachts.*

“.....we can hire dozens of staff today, but there are no qualified individuals....” *Mid-Coast Health Services.*

What if...?

- Started in 2003
- What if.....Consolidate 2 Regional HS with shrinking populations
- What if.....Add the Regional Technical High School
- What if.....Add a Community College Satellite
- What if.....Add four-year University Satellite
- What if.....Add an “Industry Center for Excellence”
- What if.....Create a Life-long Learning Campus

A Campus for Education: *Many Flags*

What if...?

- ✓ Create Regional School Unit (RSU) 13 – Regional High School (Merging Georges Valley High School & Rockland High School)
- ✓ Region 8 Mid-Coast School of Technology (MCST)
- ✓ Kennebec Valley Community College (KVCC);
- ✓ University Maine Augusta – Rockland Branch (URock)
- ✓ University Maine Orono – Belfast Hutchinson Center (UMO-H)
- ✓ Industry Center of Excellence – Local Businesses & other trade orgs

A Campus for Education: *Many Flags*

What if...?

- ❖ RSU 13 Regional High School: Managed by its Superintendent and RSU 13 School Board
- ❖ Mid-Coast School of Technology: Managed by its Director and the Region 8 School Board
- ❖ Higher Education Center:
 - University courses and degrees will be managed by the University of Maine System
 - Community College courses and degrees will be managed by KVCC
- ❖ Industry Center of Excellence programs, courses and certifications offered at MF/OC will be managed by the sponsoring industry organizations.

“Op Owner” = Many Flags/One Campus Non-profit Organization

“Land Owner” = Consolidated HS (RSU13) and Technical HS (MCST)

“Lessee” = Higher-ed (U Maine and KVCC) and Industry Partners

A Campus for Education: *Many Flags*

What if...?



Regional HS = 750 - 800

Technical HS = 450+ (15 programs)

- Auto Technology
- Auto Collision
- Culinary
- Baking
- Graphic Communications
- Marine Technology (boats & engines)
- Carpentry
- Welding Fabrications
- Fire Fighting – Emergency Medical Services
- Small Engine Repair
- Precision Manufacturing
- Health Sciences
- Allied Technologies
- Pre-Engineering
- Criminal Justice – Forensics

Adult Education = 800

Marine Technology (biology) = New

Higher Ed = 2000 w/in 5 yrs

A Campus for Education: *Many Flags*

What if...?

AUTHORIZATION Page

After careful study of our school facility needs, the following parties have agreed to proceed with the attached application (please include a copy of the party's formal action with this application).

DATE OF AFFIRMATIVE VOTE TO PROCEED: March 4, 2010

Judith Lucarelli, Superintendent, RSU 13

Signature: *Judith M. Lucarelli* Date 3/15/10

DATE OF AFFIRMATIVE VOTE TO PROCEED: Feb. 24, 2010

Beth Fisher, Director, Region 8, Mid-Coast School of Technology

Signature: *Beth Fisher* Date 3/15/10

University of ME System President or his/her designee

See Attachment J – Memorandum of Understanding signed by:

- Chancellor Richard L. Pattenaude – University of Maine System
- President Allyson Hughes Handley – University of Maine – Augusta
- President Robert A. Kennedy – University of Maine – Orono

Community College System President or his/her designee

See Attachment K – Memorandum of Understanding signed by:

- President John Fitzsimmons, Maine Community College System
- President Barbara W. Woodlee, Kennebec Valley Community College.

Industry Area Representative

See Attachments L, M and N signed by:

- Ron Defoe, President Maine Marine Trades Association
- Tuesdi Woodward, Director, Marine Systems Training Center
- Downeast Maritime, Inc

A Campus for Education: *Many Flags*

What's Next...?

Seek Key Endorsements:

- Statewide business community endorsements
- Education reform organizations

Continue working with State Board & DOE for this alternative “Innovative” model initiative = GET FUNDING

Seek external donors and private funding sources to match / supplement any state funding (Gates Foundation, etc...)

Maintain local support and support of our UMaine & Community College partners

A Campus for Education: *Many Flags*

What's Next...?



A Campus for Education: *Many Flags*

What if...we do it ourselves?



*50% continue on to higher education**
20% concurrently enrolled in college courses

200 college credits awarded 2013-2014
800 adult education students served
231 industry certifications issued 2013-2014

**approximately the same state wide average for all high school students*

Mid-Coast School of Technology



LAVALLEE | BRENSINGER ARCHITECTS

What if....we do it ourselves?

- Started in 2013 – Let’s do it Ourselves
 - What if....Rejuvenate our Regional Technical High School (MCST)
 - What if....Expand existing Adult Ed Courses (MCST)
 - What if....Add spaces for Core HS Academics (MCST)
 - What if....Add a Community College Satellite (KVCC)
 - What if....Add four-year University Satellite (U Rock)
 - What if....Engage our Industry Partners
 - What if....Create a Life-long Learning **“School”**

Mid-Coast School of Technology



What if....we do it ourselves?

Rejuvenate our Technical High School (New or Renovated)

450 HS students (sending students)

6 regional High Schools

50 +/- Middle School students

800 adult ed students

- Coast Guard
- Certified Nursing Assistant
- Commercial Drivers License

KVCC Programs that align with MCST programs

Industry Continuing Education Center that aligns with MCST programs

Mid-Coast School of Technology



What if...we do it ourselves?

Can we include KVCC?

Can we include adult ed?

Current programs

Industry Partners

Local Businesses

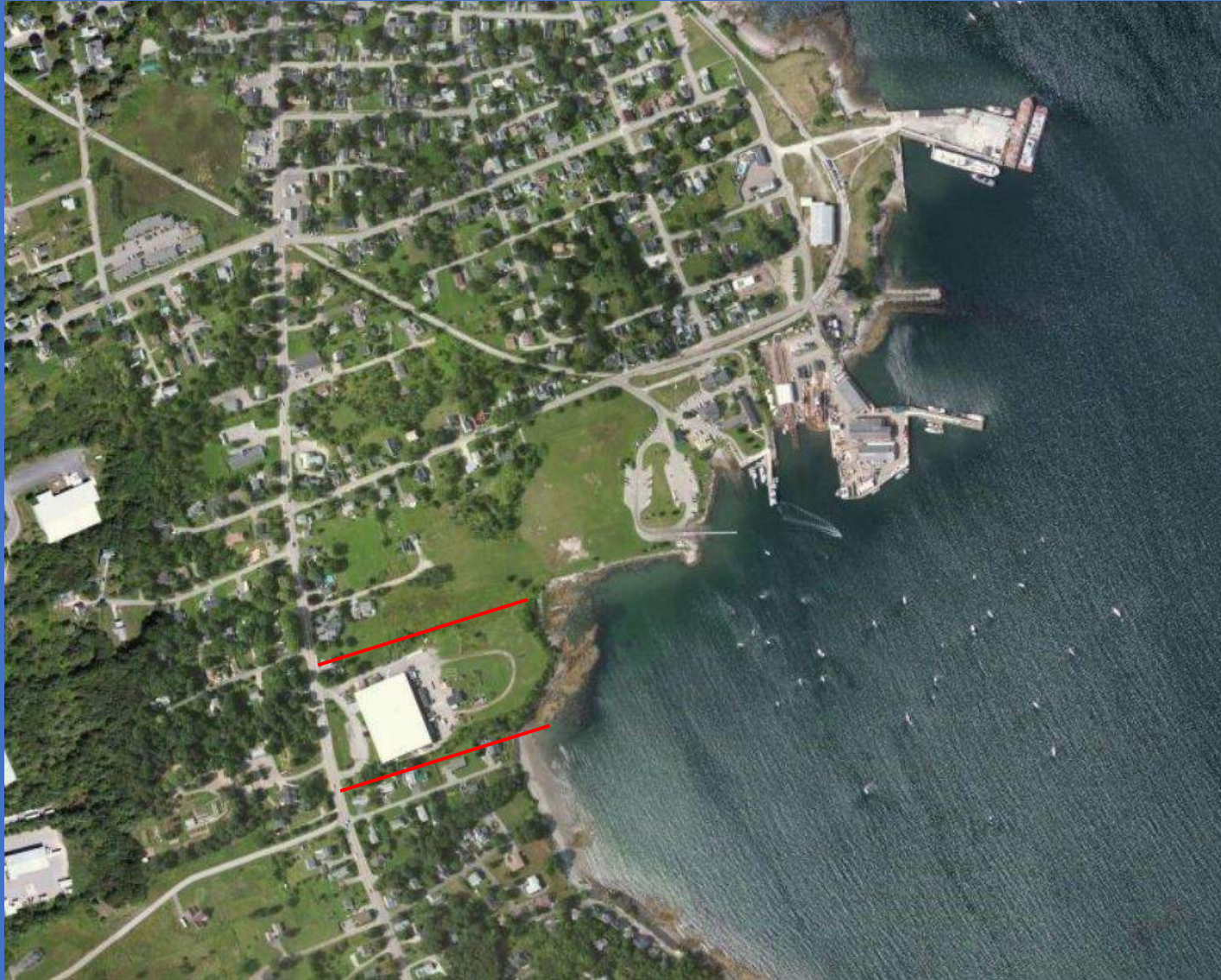
Can we include youth (middle school) and senior community members (artisan industry)?

Can we include core high school curriculum?

Mid-Coast School of Technology



Let's Do It Ourselves



Mid-Coast School of Technology



LAVALLEE | BRENSINGER ARCHITECTS

Let's Do It Ourselves



Mid-Coast School of Technology



LAVALLEE | BRENSINGER ARCHITECTS

Let's Do It Ourselves



Mid-Coast School of Technology



LAVALLEE | BRENSINGER ARCHITECTS

Let's Do It Ourselves



Mid-Coast School of Technology



LAVALLEE | BRENSINGER ARCHITECTS

Let's Do It Ourselves



Mid-Coast School of Technology



LAVALLEE | BRENSINGER ARCHITECTS



Explore the Possibilities

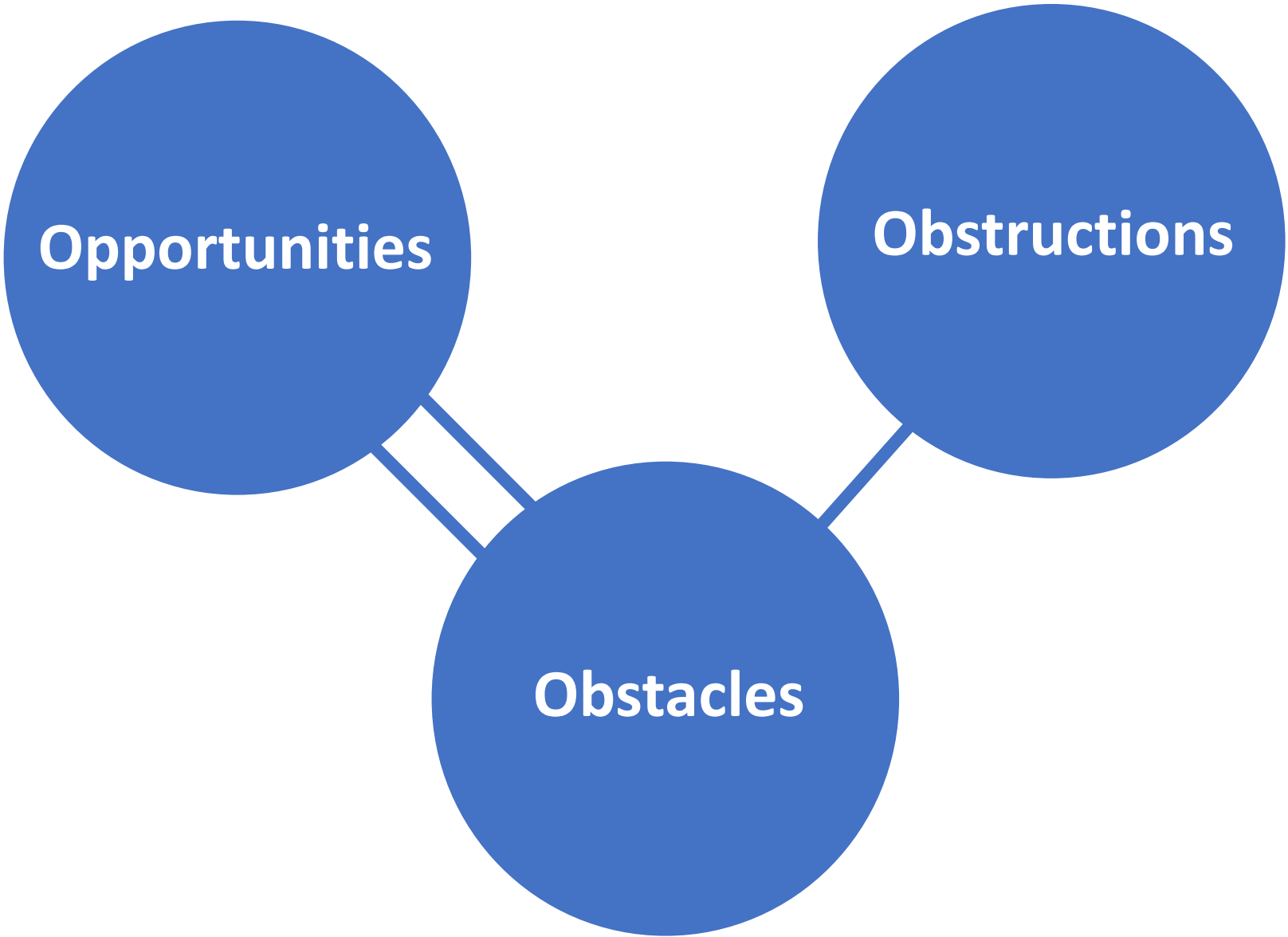
A Community Building for Education

LAVALLEE | BRENSINGER ARCHITECTS

Needs & Budget



O-Zone Discussion (O₃)



O-Zone Discussion (O_3)

Opportunities

O-Zone Discussion (O₃)

Opportunities

- Showcase student work and projects to potential employers
- Cooperative Learning Opportunities with Higher Education
- Industry Partners Taking Active Roles – help us start a business
- Exploratory Lab for Elective, non-credit, and credit bearing (Community College)
 - college prep students can explore programs
 - students can “explore” multiple fields (pathways HS & Community College)
- Offering some programming via Tandberg Video Conferencing to give Island students more CTE options and College options
- Implementing The Bridge Year Plan
 - a plan to allow students to earn up to 30 college credits
 - a plan that keeps CTE cohorts together at sending schools (piloted in 2016 throughout the state)
- Better spaces for learning and working.
 - Quiet space for one-on-one tutoring.
- Assessment space for 3rd party evaluations.
- Allowing students to eat and drink... when they need it
- Faculty space for sharing ideas and student consultations
- Space to gather the whole school / business for events
- Visually connected spaces for more exploration and team projects
- Community Awareness of multiple pathways
- Changing the stigma of technical educations vs college-prep education
- Site location = already exists and currently works with the sending schools
- Create a new education model

O-Zone Discussion (O_3)

Obstacles

O-Zone Discussion (O₃)

Obstacles

- Having businesses (non-school personnel) in the high school with students
- Having Higher Education taking place in the high school with students
- Having Industry Partners (non-school personnel) involved in business incubators with the high students
- Having college students and adult learners in the high school with the students
- Allowing higher-ed, local businesses, and community programs in the school, off hours, to use the labs (materials, equipment, etc...)
- Implementing full-day CTE on alternating days = (3+2 and 2+3); not AM / PM sessions
- "...Are we really going to try this again, after 10 years of effort without any support...?"
- Safety and Security
- Scheduling of multiple uses at multiple times; weekends and after school
- Transportation from sending schools
- Aligning schedules with 6 sending schools
- Spaces that meet HS & College requirements
- Ownership of the facility
- Resource costs and usage (materials and wear and tear)
- Changing the stigma of technical educations vs college-prep education
- Convincing sending High Schools to support the project
- Convincing 21 Cities and Towns to locally fund 100% of the project

O-Zone Discussion (O_3)

Obstructions

O-Zone Discussion (O_3)

Obstructions

- Average tenure of high school superintendent is approx. 3 years
- Limited Site Acreage
- Occupied site and high school
- No funding from the State = limited funding
- Code differences for difference uses (Education, Assembly, Business)
- “Why you and not us...”
- Site planning regulations and height restrictions
- Local Authorities Having Jurisdiction, understanding multiple use and multiple occupancies...of the same space(s)

Vision

- Create a new education model in the region
- Create an energy-efficient building that reflects best technological practices
- Create an educationally inspiring facility – for everyone
- Create a safe and secure learning environment – for everyone
- Engage all members of the community to provide for all members of the community

Guiding Principles (non-negotiable)

- A learning environment where “all” students want to learn
- Sustainable Facility – environmentally, operationally, educationally
- Life-long learning School – middle school events, technical high school, higher education, business incubator, and industry skills

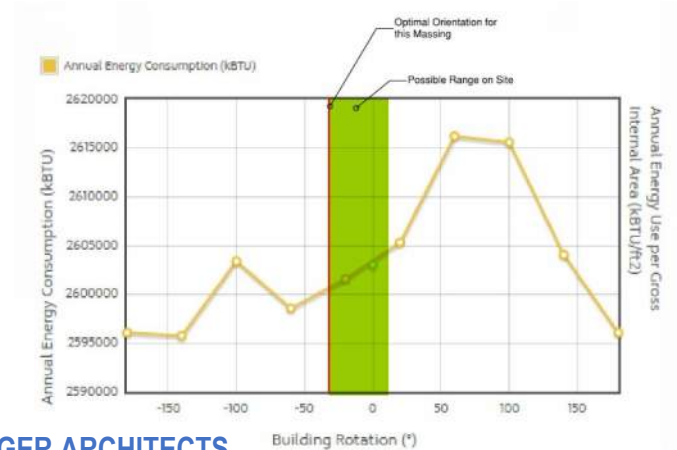
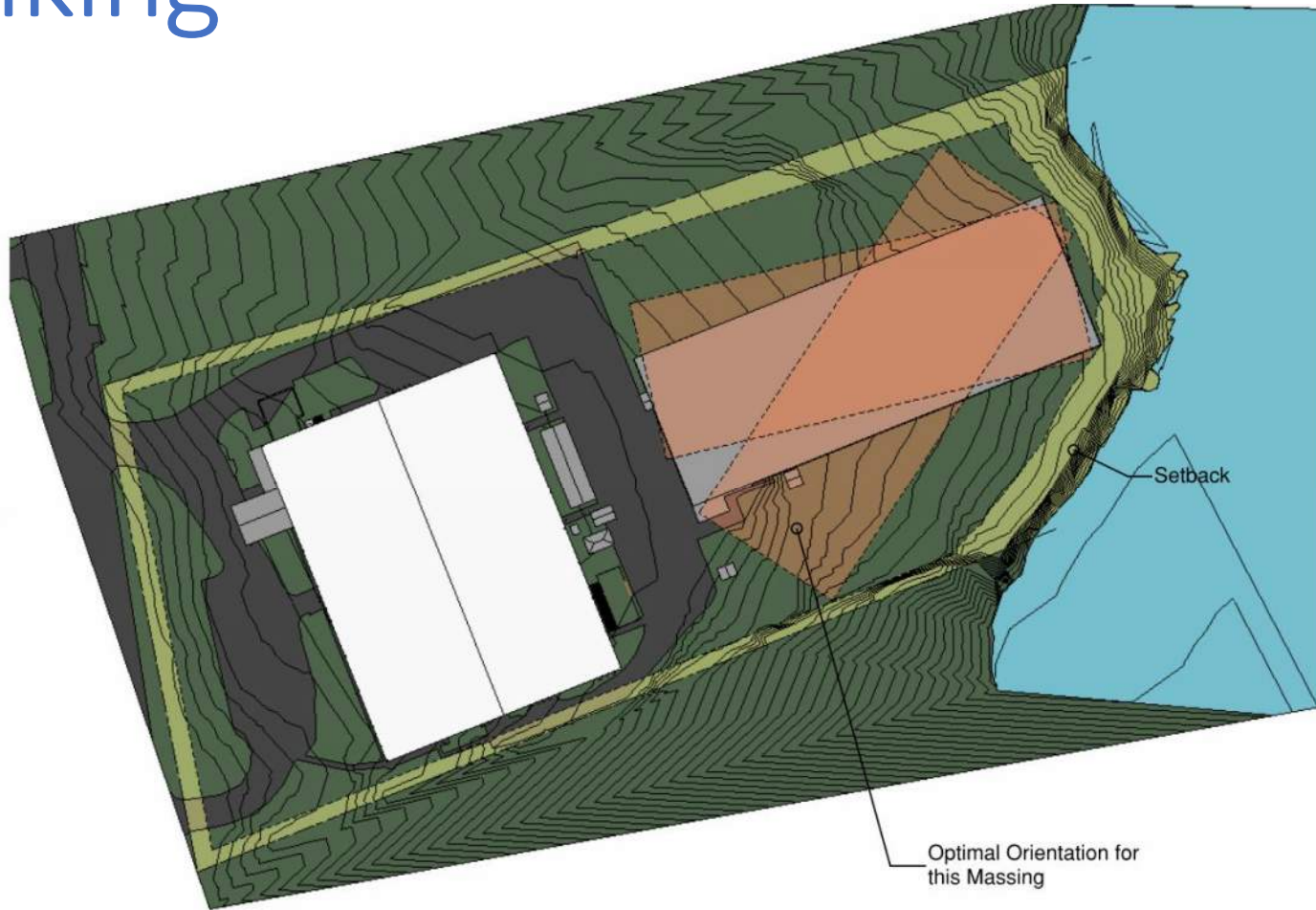


Making it Work

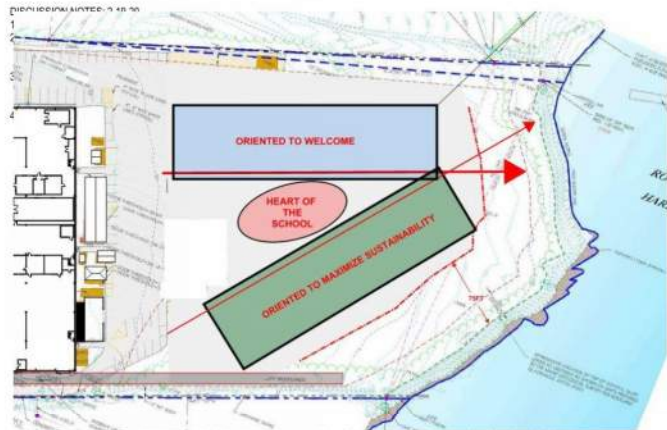
A Community Building for Education

LAVALLEE | BRENSINGER ARCHITECTS

Thinking



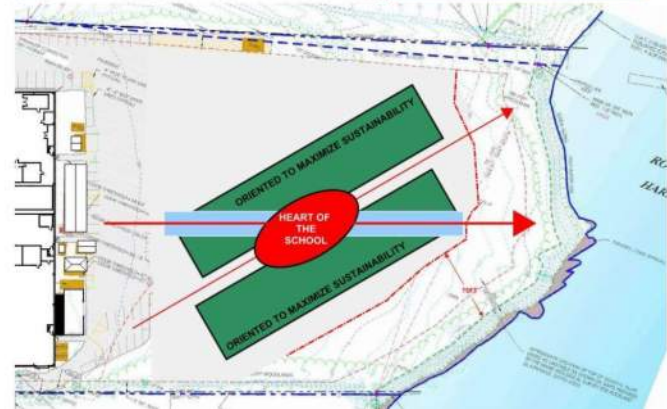
Thinking



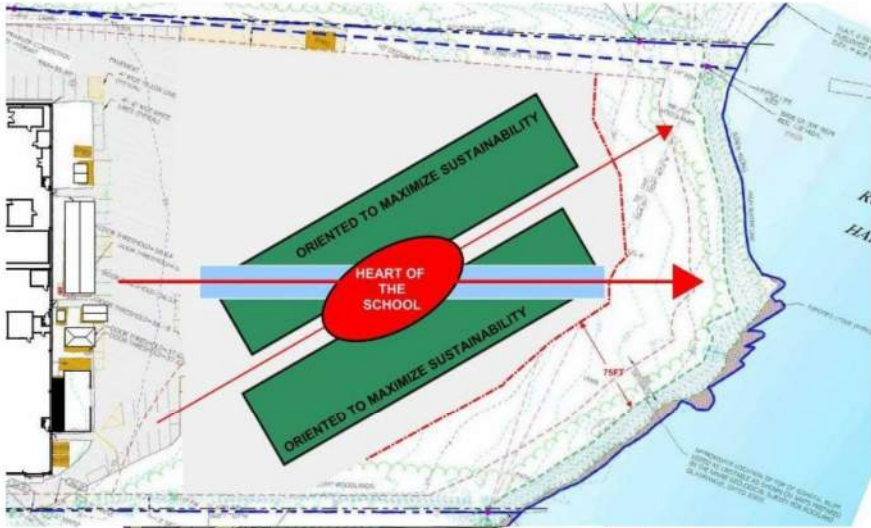
OPTION A



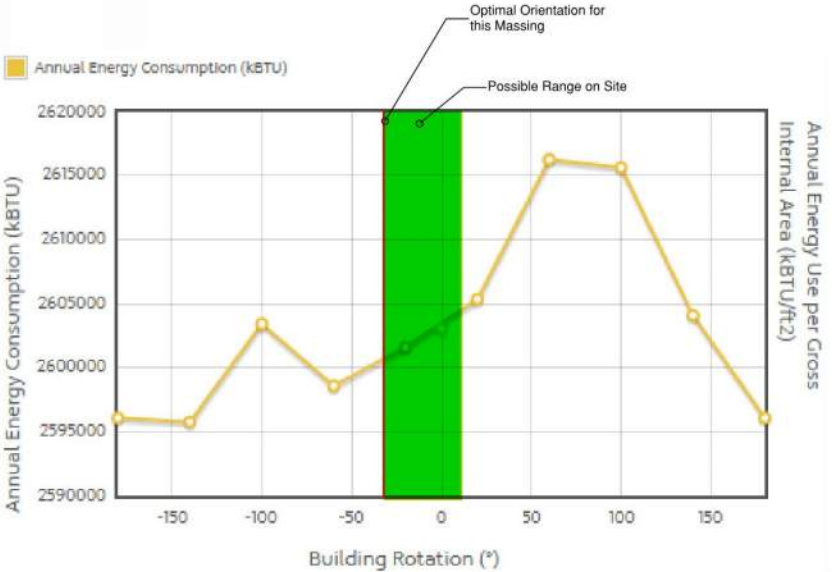
OPTION B



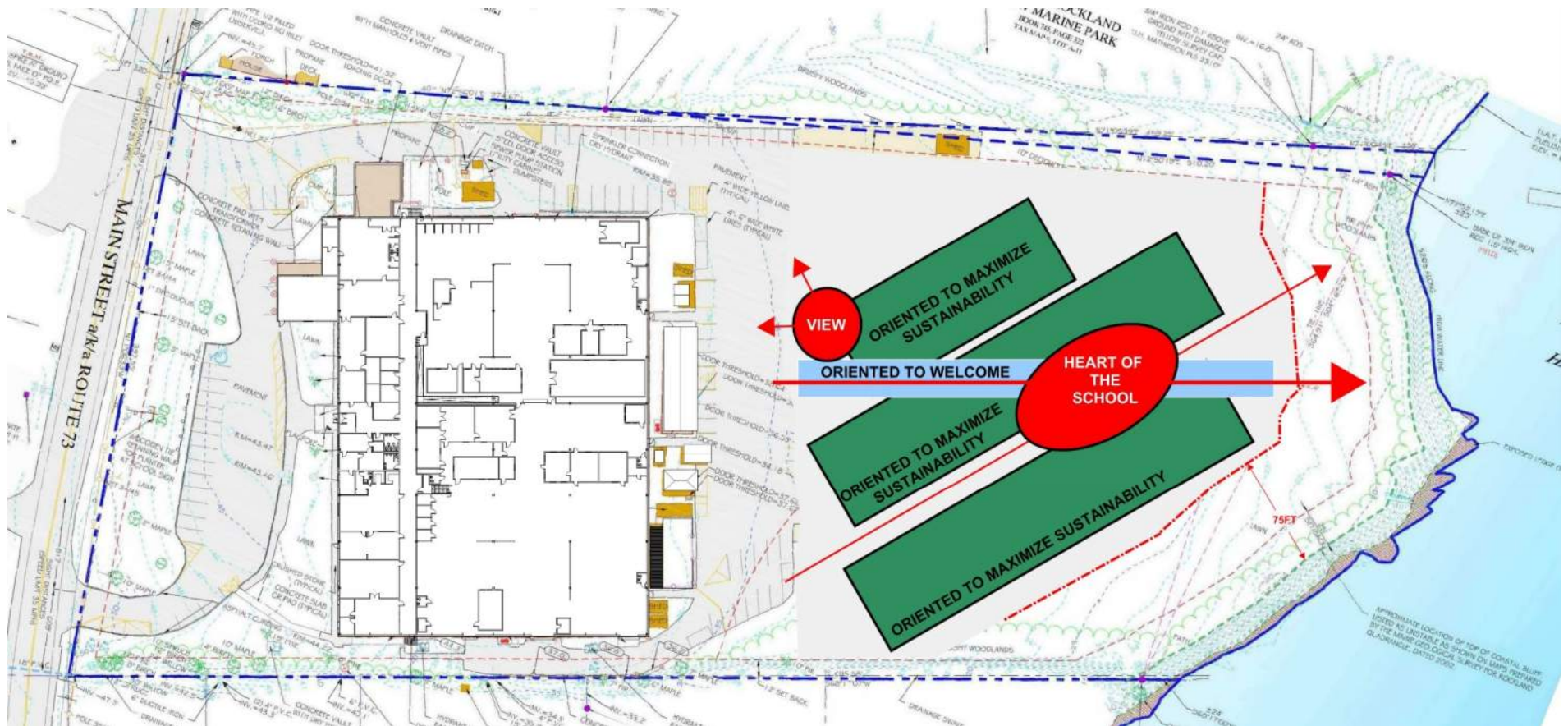
OPTION C



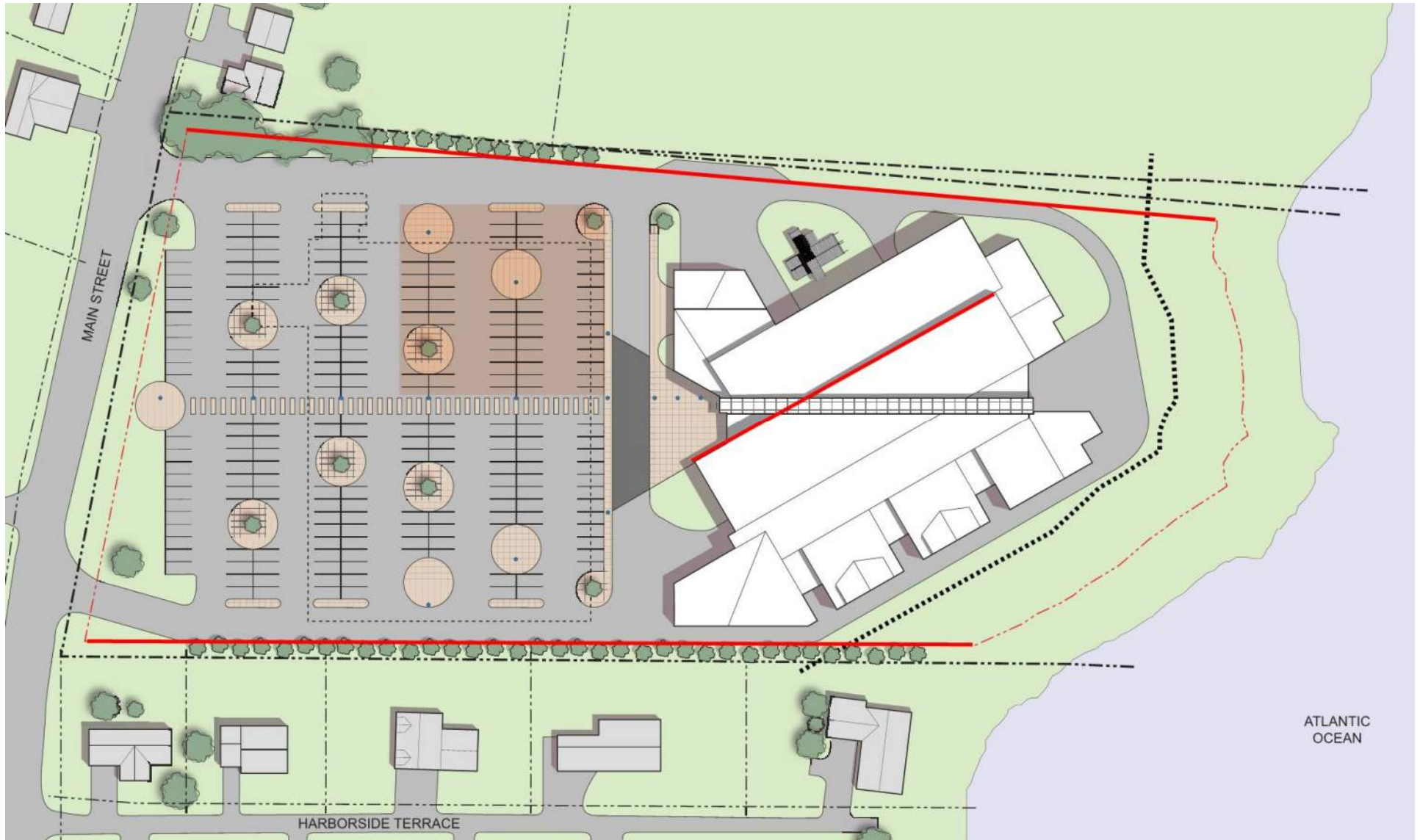
Optimal Orientation for this Massing
Welcoming Orientation



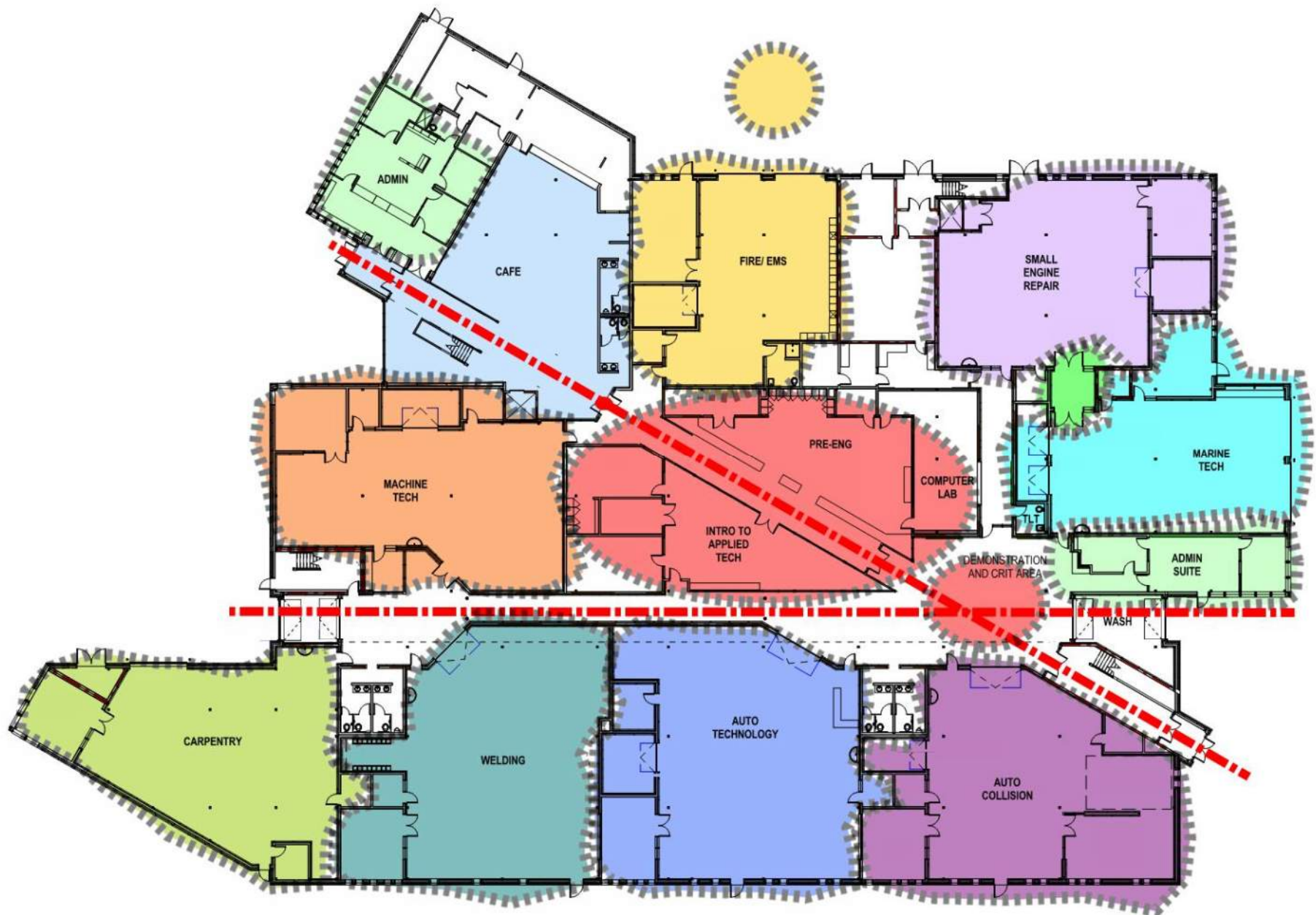
Thinking



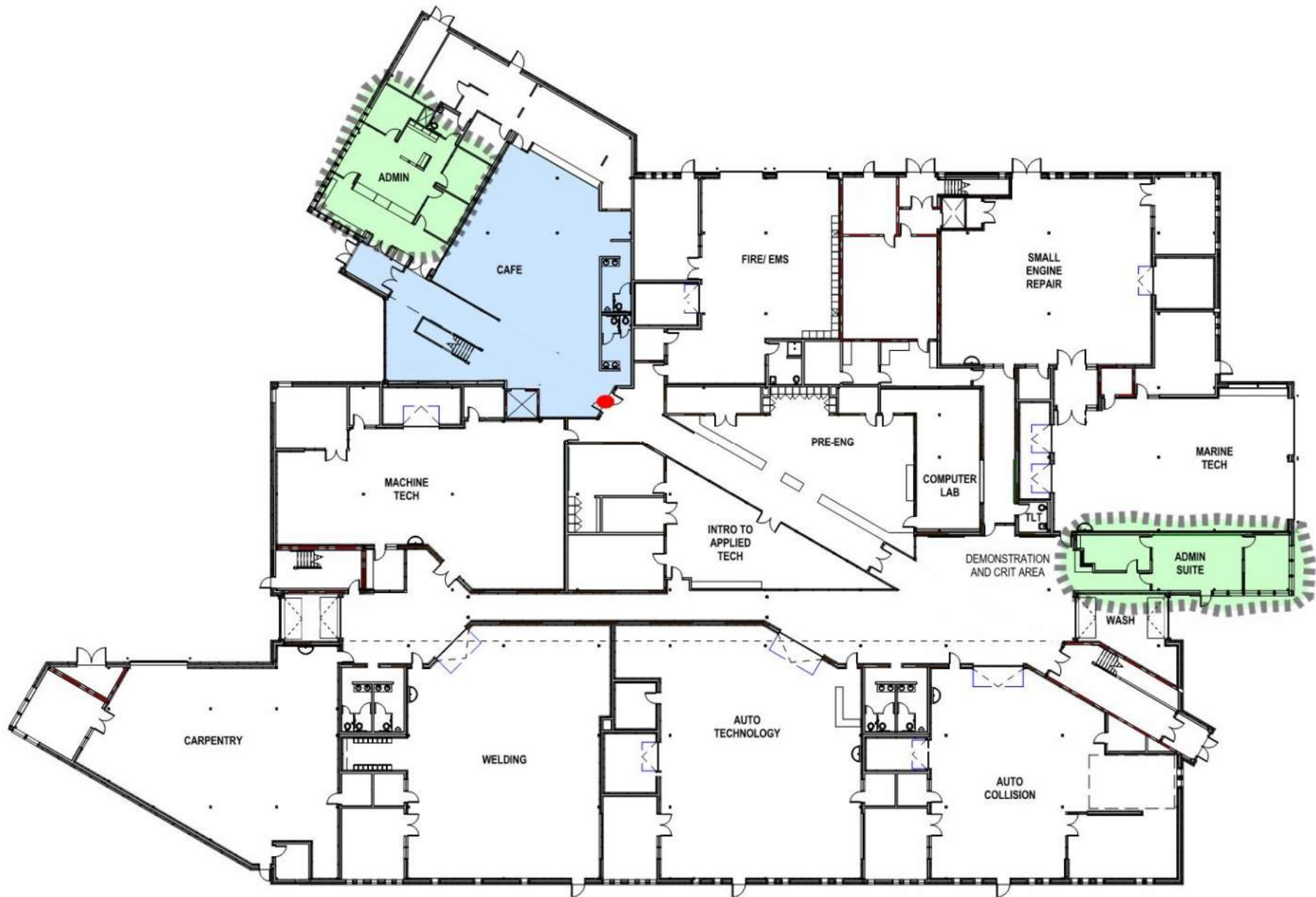
Thinking



Thinking



Thinking



Thinking



Thinking



Thinking



Thinking



Thinking



Thinking



Building



LAVALLEE | BRENSINGER ARCHITECTS

Building



LAVALLEE | BRENSINGER ARCHITECTS