



Brooke
CHARTER SCHOOLS

ARCHITECTURE OF A GREAT PUBLIC SCHOOL

A SPACE THAT IS WORTHY OF ITS STUDENTS

A4LE Northeast Conference | March 29, 2019

Who We Are



Larry Spang AIA
Architect

Principal,
Arrowstreet



Emily Grandstaff-Rice FAIA
Architect

Senior Associate,
Arrowstreet

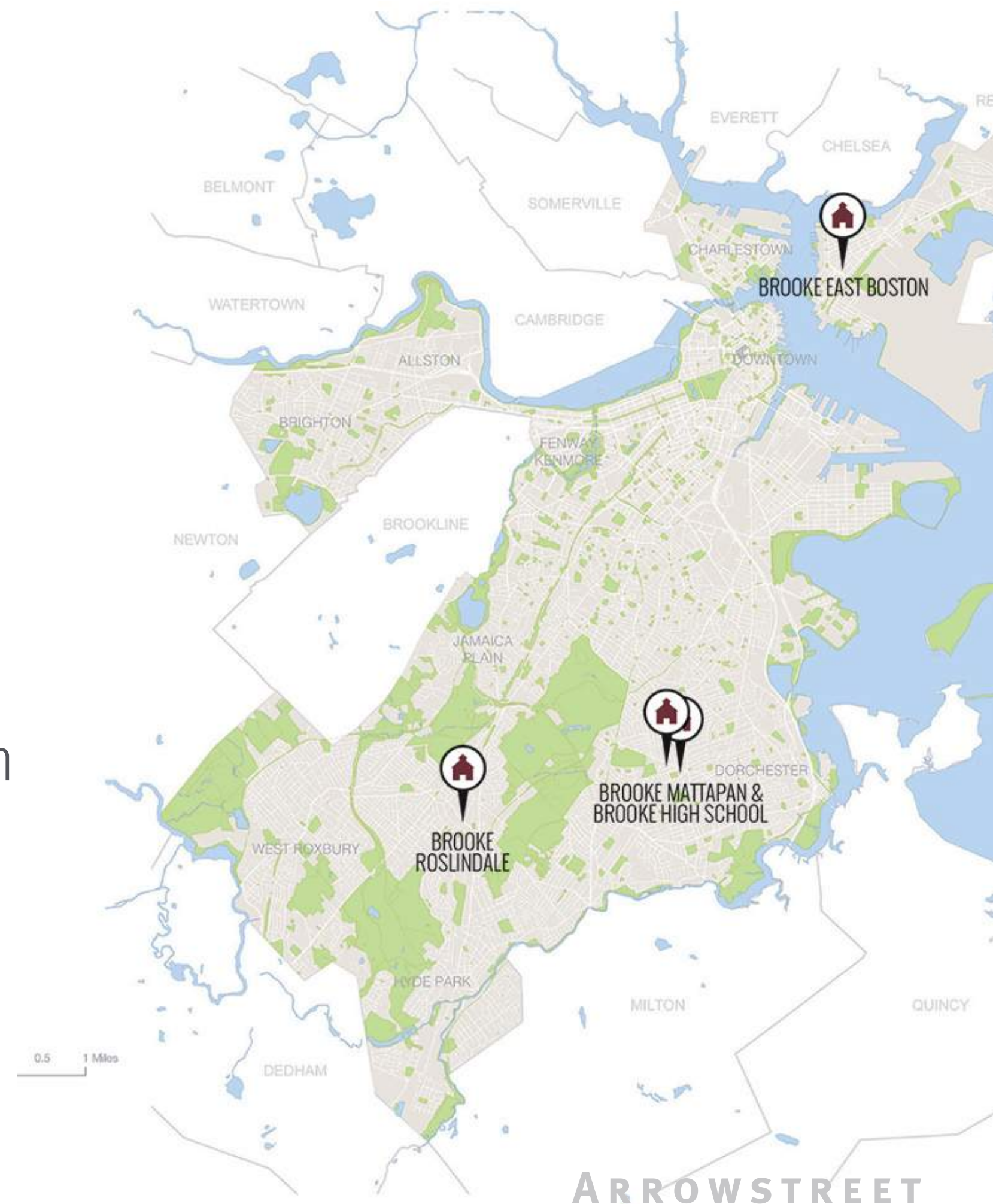


Scott Oran
Brooke Charter Board Chair

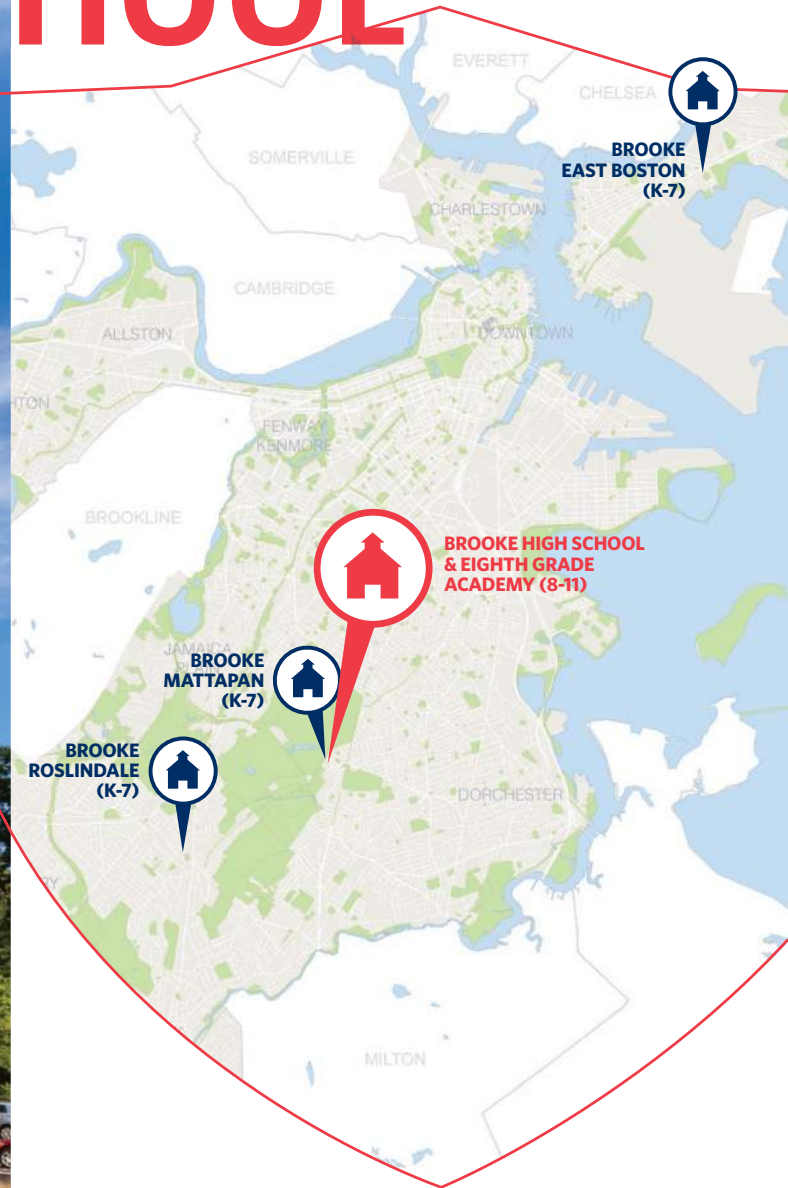
Founder and Managing Director,
Dinosaur Capital Partners

Agenda

1. Educational Philosophy of Brooke Charter Schools
2. Differences in Charter vs. Public School Programming
3. Designing for Brooke's Mission
4. Making the Project a Reality & Overcoming Challenges



CONSTRUCTING BROOKE HIGH SCHOOL





“Brooke Charter High School is a 21st century school designed for success.”

—**Marty Walsh, Mayor, City of Boston**

“A true gem in the crown jewel of education in Boston and the Commonwealth of Massachusetts.”

—**Charlie Baker, Governor of Massachusetts**

“This is more than a high school, it is a place where students and families can dream... it is a beacon of high expectations.”

—**Andrea Campbell, City Council President**

“It is so great to have a building that will now be an anchor to our community.”

—**Russell Holmes, State Representative, 6th Suffolk District**

“Brooke succeeds because its teachers and students appreciate the beauty of learning. Now they have a building that matches and is worthy of their accomplishments.”

—**Jim Peyser, State Secretary of Education**



Brooke HIGH SCHOOL

BROOKE CHARTER
SCHOOLS IS BUILT
ON ONE CORE BELIEF:
GREAT TEACHING
CLOSES THE
ACHIEVEMENT GAP.

DESIGNED FOR IMPACT

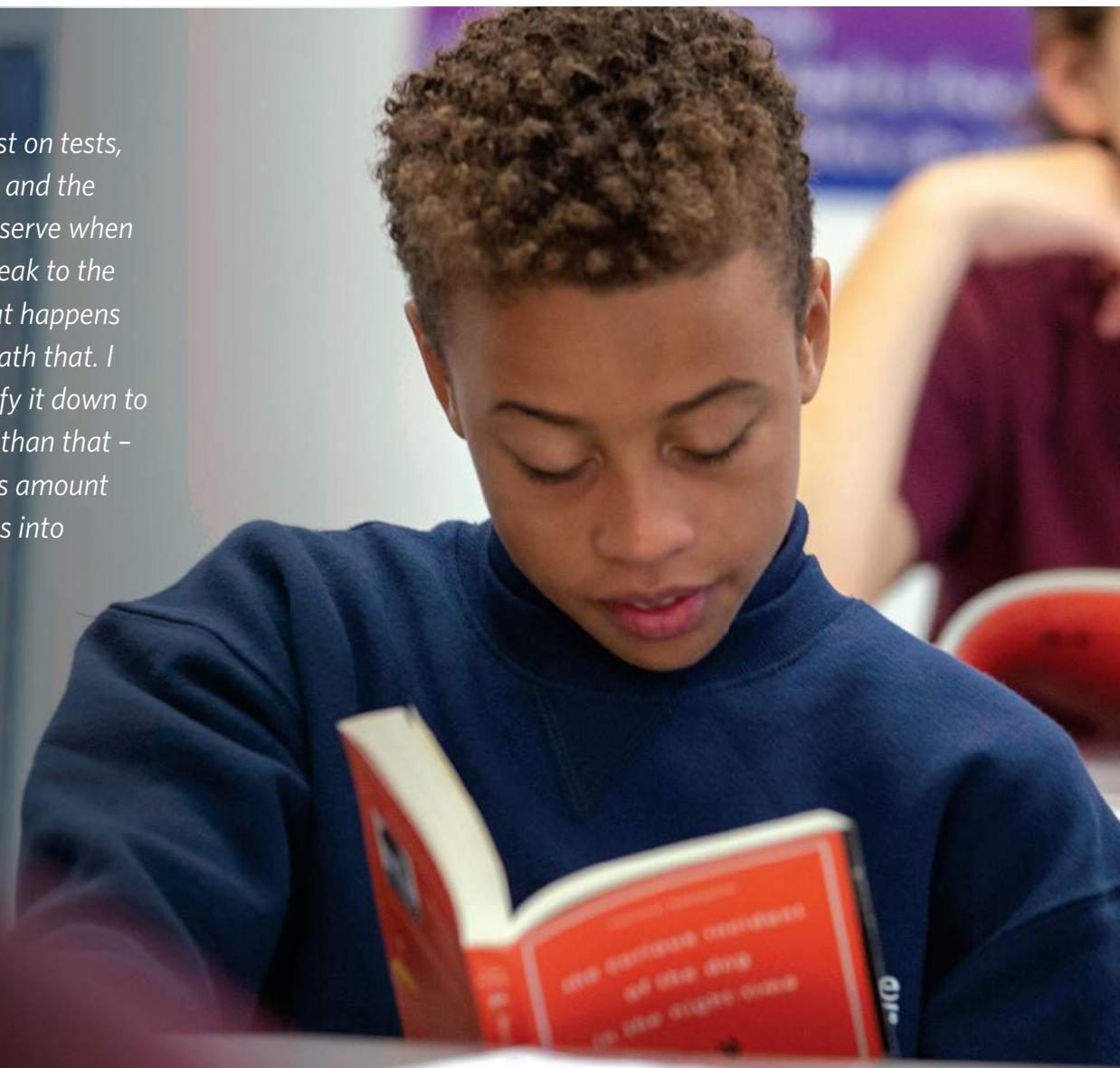
Great schools have a “north star,” a guiding principle by which they make decisions, establish priorities, and define success. Our mission - to provide an academically rigorous public education to students from the cities of Boston and Chelsea that will ensure that they are prepared to enter into and succeed in college - is our north star. We believe all students can achieve at the highest levels if they have great teachers.



“Brooke’s results – not just on tests, but also on student work and the student discourse you observe when you visit the schools – speak to the really strong learning that happens there. There’s a ton beneath that. I think some people simplify it down to instruction, but it’s more than that – there’s also a tremendous amount of intentionality that goes into school design.”

Caleb Dolan

Executive Director
KIPP Massachusetts



As a community, Brooke upholds four organizational values



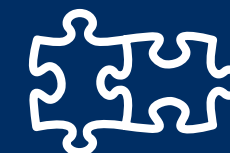
WE ARE DRIVEN BY AN URGENT MISSION



GREAT TEACHING CLOSES THE ACHIEVEMENT GAP



WE ARE ALL LEADERS



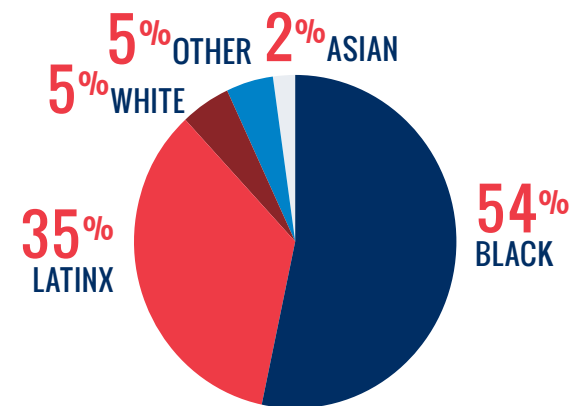
WE GROW BEST TOGETHER

 **x 4 = 1,740 STUDENTS**

Brooke Charter Schools primarily serves families from the neighborhoods of East Boston, Dorchester, Mattapan, and Hyde Park, where the **average annual family income is \$38,194.**

78%
of Brooke students
qualify for free or
reduced-price lunch

STUDENT DEMOGRAPHICS



DIVERSITY STATEMENT

We believe in the power of diversity and inclusion including, but not limited to, race, ethnicity, culture, religion, language, socioeconomic status, citizenship, national origin, gender, sexual orientation, age, and physical abilities. With 89% of Brooke students identifying as Black or Latinx, we prioritize uprooting racism through academics, equipping our students with tools to advocate for a diverse, equitable, and inclusive future. By setting high expectations for our students, creating a culturally responsive curriculum, and developing a racially diverse staff, we intend to counteract the pervasive presence of societal racism that our students encounter as a condition of their daily lives.

GREAT TEACHING: THE FOUNDATION

We challenge our students

Great teaching means students are challenged and known.

While buildings start with a foundation of concrete, Brooke is built on a foundation of great teaching. We challenge our students to become thoughtful readers, informed citizens, and problem solvers. Brooke schools promote a culture of achievement whereby we value, believe in, and celebrate individually and collectively reaching high, objective academic performance goals. Teaching teams utilize rigorous standards alongside rigorous assessment so that teachers can tailor instruction around what each student does and does not know, enabling all students to progress along the path to academic mastery.



Our teachers meet every parent before the school year starts and build **meaningful relationships** throughout the year.



Teachers provide **individualized tutoring** within the regular school day.

Our class sizes are small, ranging from 15 students per class in lower grades up to 30 in eighth grade and above.

We revere teaching as an intellectual profession

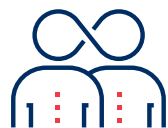
We harness a combination of research, experience, and real-time data to define what great teaching looks like in the classroom. We know that great teachers are made, not born, so we invest in supporting them throughout their career:



Teachers spend **one afternoon a week** in professional development working together to meet their learning goals.



Grade-level teams collaborate daily in co-planning time to design lessons and analyze data with their grade-level team.



Teachers are supported to grow and develop through at least **30 observations per year**, which inform ongoing feedback on their strengths and growth areas.



We are eager to share our Elements of Effective Instruction

Incorporating videos of effective instruction in our teachers’ professional development has helped propel great teaching at Brooke. Thanks to support from the Charter School Growth Fund, the Bill and Melinda Gates Foundation, and the Louis Calder Foundation, we were able to launch our new **RESOURCES.EBROOKE.ORG** website and share hundreds of high quality videos, standards, and unit plans with other schools in an open source platform.

ACHIEVEMENT ON THE HORIZON



Over the last five years, Brooke has uniquely established itself as one of the very best schools in Boston. Their students consistently achieve at some of the highest rates in the city. When you look at the CREDO studies, you see that Boston is the best charter sector in the country – if Brooke is the leading the pack in the highest performing charter city, there’s a legitimate case to be made that Brooke is the best charter school in the country.”

– **Josh Biber**, Executive Director, Teach for America - Massachusetts



100%

of tenth graders scored
“advanced” or “proficient”
on all three MCAS tests

TOP 10

“advanced” MCAS
scores for high schools
in Massachusetts

BEST

open enrollment school
in Boston, based on K-8
results

ARROWSTREET

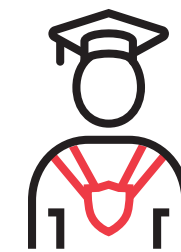
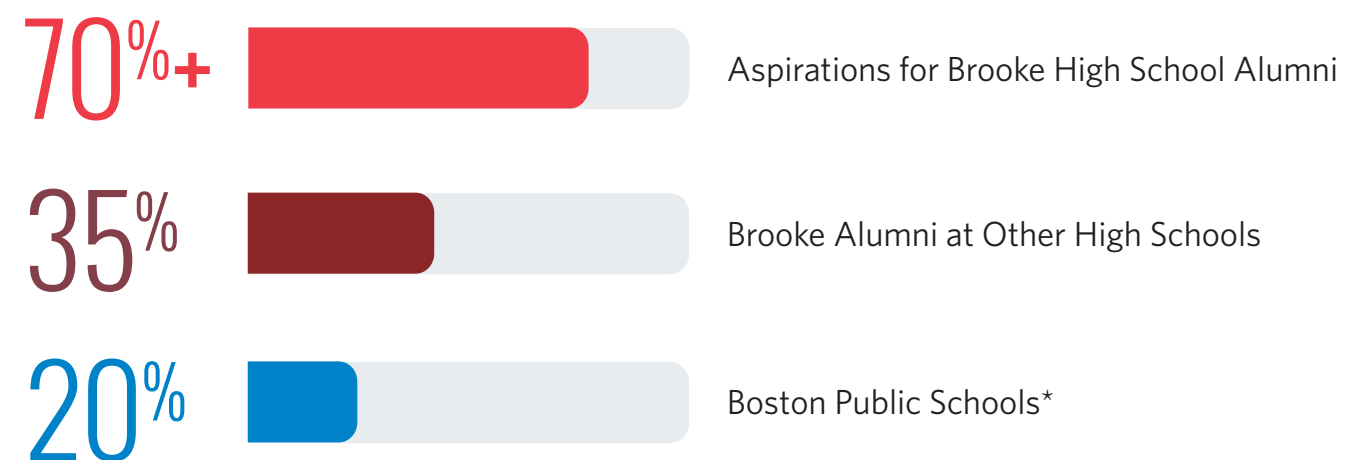
Before Brooke High School was founded in 2016, Brooke alumni attended 49 different high schools across the state. With a strong elementary and middle school foundation, these alumni went on to complete high school at a rate of 98%. Brooke alumni also have graduated from college at much higher rates than their Boston Public Schools (BPS) peers: 35% of Brooke's first three classes of alumni have graduated from two and four-year colleges and universities within six years of high school graduation compared to 20% of their peers in Boston Public Schools.* While we are proud of our alumni, we know we can and must do better to ensure all Brooke alumni have the post-secondary education and skills necessary for long-term professional and personal success.

At Brooke High School, all of our scholars are required to take part in our signature program: Advanced Placement (AP) for All. Every Brooke High School scholar must take a minimum of three AP courses (including AP Computer Science). We believe that this level of rigor best prepares our scholars to have high-quality options to choose from upon graduating from Brooke High School. 600 Scholars will attend Brooke High School when it reaches full capacity.



COLLEGE PERSISTENCE

Percent of students graduating from two and four-year higher education institutions within six years of high school completion



2020

The first graduating class from Brooke High School!

A photograph of a classroom scene, overlaid with a blue tint. A female teacher stands on the left, holding a book and looking towards the right. Several students in the foreground have their hands raised, indicating an interactive lesson. On the wall behind the teacher, a poster reads "BLACK LIVES MATTER" with hands raised. Another poster to the right says "IS BY".

OUR ARCHITECTURE IS
A PLATFORM FROM WHICH
WE LAUNCH GREAT TEACHING
AND LEARNING. WE INVITE
YOU TO COME SEE WHAT
WE ARE BUILDING AT
BROOKE CHARTER
SCHOOLS.

MSBA Guidelines: High Schools

ROOM TYPE	ROOM NFA ¹	# OF RMS	area totals	Comments
CORE ACADEMIC SPACES			1,150	
(List classrooms of different sizes separately)				
Classroom - General	850	1	850	825 SF min - 950 SF max
Teacher Planning	100	1	100	
Small Group Seminar (20-30 seats)	500	0	-	
Science Classroom / Lab	1,440	0	-	3 x85% ut=20 Seats-1 per /day/student
Prep Room	200	0	-	
Central Chemical Storage Rm	200	1	200	
SPECIAL EDUCATION			0	
(List classrooms of different sizes separately)				
Self-Contained SPED	950	0	-	assumed 8% of pop. in self-contained SPED
Self-Contained SPED Toilet	60	0	-	
Resource Room	500	0	-	1/2 size Genl. Clrm.
Small Group Room	500	0	-	1/2 size Genl. Clrm.
ART & MUSIC			3,700	
Art Classroom - 25 seats	1,200	0	-	Assumed use - 25% Population - 5 times/week
Art Workroom w/ Storage & kiln	150	0	-	
Band - 50 - 100 seats	1,500	1	1,500	Assumed use - 25% Population - 5 times/week
Chorus - 50 - 100 seats	1,500	1	1,500	
Ensemble	200	1	200	
Music Practice	75	0	-	
Music Storage	500	1	500	
VOCATIONS & TECHNOLOGY			3,200	
Tech Clrm. - (E.G. Drafting, Business)	1,200	1	1,200	Assumed use - 50% Population - 5 times/week
Tech Shop - (E.G. Consumer, Wood)	2,000	1	2,000	Assumed use - 50% Population - 5 times/week
HEALTH & PHYSICAL EDUCATION			16,200	
Gymnasium	12,000	1	12,000	
PE Alternatives	3,000	1	3,000	
Gym Storeroom	300	1	300	
Locker Rooms - Boys / Girls w/ Toilets	0	1	-	5.6 sf/student total
Phys. Ed. Storage	500	1	500	
Athletic Director's Office	150	1	150	
Health Instructor's Office w/ Shower & Toilet	250	1	250	
MEDIA CENTER			3,650	
Media Center / Reading Room	3,650	1	3,650	
Computer Lab				

AUDITORIUM / DRAMA			2,650	
Auditorium	0	1	-	2/3 Enrollment @ 10 SF/Seat - 750 seats MAX
Stage	1,600	1	1,600	
Auditorium Storage	250	1	250	
Make-up / Dressing Rooms	300	2	600	
Controls / Lighting / Projection	200	1	200	
DINING & FOOD SERVICE			2,900	
Cafeteria / Student Lounge / Break-out	0	1	-	3 seatings - 15SF per seat
Chair / Table Storage	300	1	300	
Scramble Serving Area	600	1	600	
Kitchen	1,600	1	1,600	1600 SF for first 300 + 1 SF/student Add'l
Staff Lunch Room	400	1	400	20 SF/Occupant
MEDICAL			410	
Medical Suite Toilet	60	1	60	
Nurses' Office / Waiting Room	250	1	250	
Interview Room	100	1	100	
Examination Room / Resting	100	0	-	
ADMINISTRATION & GUIDANCE			2,920	
General Office / Waiting Room / Toilet	300	1	300	
Teachers' Mail and Time Room	100	1	100	
Duplicating Room	200	1	200	
Records Room	200	1	200	
Principal's Office w/ Conference Area	375	1	375	
Principal's Secretary / Waiting	125	1	125	
Assistant Principal's Office - AP1	150	1	150	
Assistant Principal's Office - AP2	150	0	-	
Supervisory / Spare Office	120	1	120	
Conference Room	450	1	450	
Guidance Office	150	0	-	
Guidance Waiting Room	100	1	100	
Guidance Storeroom	100	1	100	
Career Center	300	1	300	
Records Room	100	1	100	
Teachers' Work Room	300	1	300	
CUSTODIAL & MAINTENANCE			2,075	
Custodian's Office	150	1	150	
Custodian's Workshop	250	1	250	
Custodian's Storage	375	1	375	
Recycling Room / Trash	400	1	400	
Receiving and General Supply	300	1	300	
Storeroom	400	1	400	
Network / Telecom Room	200	1	200	
OTHER			0	
Other (specify)				

MSBA Guidelines: High Schools

ROOM TYPE	ROOM NFA ¹	# OF RMS	area totals	Comments
CORE ACADEMIC SPACES			1,150	
<i>(List classrooms of different sizes separately)</i>				
Classroom - General	850	1	850	825 SF min - 950 SF max
Teacher Planning	100	1	100	
Small Group Seminar (20-30 seats)	500	0	-	
Science Classroom / Lab	1,440	0	-	3 x85% ut=20 Seats-1 per /day/student
Prep Room	200	0	-	
Central Chemical Storage Rm	200	1	200	
SPECIAL EDUCATION			0	
<i>(List classrooms of different sizes separately)</i>				
Self-Contained SPED	950	0	-	assumed 8% of pop. in self-contained SPED
Self-Contained SPED Toilet	60	0	-	
Resource Room	500	0	-	1/2 size Genl. Clrm.
Small Group Room	500	0	-	1/2 size Genl. Clrm.
ART & MUSIC			3,700	
Art Classroom - 25 seats	1,200	0	-	Assumed use - 25% Population - 5 times/week
Art Workroom w/ Storage & kiln	150	0	-	
Band - 50 - 100 seats	1,500	1	1,500	Assumed use - 25% Population - 5 times/week
Chorus - 50 - 100 seats	1,500	1	1,500	
Ensemble	200	1	200	
Music Practice	75	0	-	
Music Storage	500	1	500	
VOCATIONS & TECHNOLOGY			3,200	
Tech Clrm. - (E.G. Drafting, Business)	1,200	1	1,200	Assumed use - 50% Population - 5 times/week
Tech Shop - (E.G. Consumer, Wood)	2,000	1	2,000	Assumed use - 50% Population - 5 times/week
HEALTH & PHYSICAL EDUCATION			16,200	
Gymnasium	12,000	1	12,000	
PE Alternatives	3,000	1	3,000	
Gym Storeroom	300	1	300	
Locker Rooms - Boys / Girls w/ Toilets	0	1	-	5.6 sf/student total
Phys. Ed. Storage	500	1	500	
Athletic Director's Office	150	1	150	
Health Instructor's Office w/ Shower & Toilet	250	1	250	
MEDIA CENTER			3,650	
Media Center / Reading Room	3,650	1	3,650	
Computer Lab				

Not typically included in Charter Schools

AUDITORIUM / DRAMA			2,650	
Auditorium	0	1	-	2/3 Enrollment @ 10 SF/Seat - 750 seats MAX
Stage	1,600	1	1,600	
Auditorium Storage	250	1	250	
Make-up / Dressing Rooms	300	2	600	
Controls / Lighting / Projection	200	1	200	
DINING & FOOD SERVICE			2,900	
Cafeteria / Student Lounge / Break-out	0	1	-	3 seatings - 15SF per seat
Chair / Table Storage	300	1	300	
Scramble Serving Area	600	1	600	
Kitchen	1,600	1	1,600	1600 SF for first 300 + 1 SF/student Add'l
Staff Lunch Room	400	1	400	20 SF/Occupant
MEDICAL			410	
Medical Suite Toilet	60	1	60	
Nurses' Office / Waiting Room	250	1	250	
Interview Room	100	1	100	
Examination Room / Resting	100	0	-	
ADMINISTRATION & GUIDANCE			2,920	
General Office / Waiting Room / Toilet	300	1	300	
Teachers' Mail and Time Room	100	1	100	
Duplicating Room	200	1	200	
Records Room	200	1	200	
Principal's Office w/ Conference Area	375	1	375	
Principal's Secretary / Waiting	125	1	125	
Assistant Principal's Office - AP1	150	1	150	
Assistant Principal's Office - AP2	150	0	-	
Supervisory / Spare Office	120	1	120	
Conference Room	450	1	450	
Guidance Office	150	0	-	
Guidance Waiting Room	100	1	100	
Guidance Storeroom	100	1	100	
Career Center	300	1	300	
Records Room	100	1	100	
Teachers' Work Room	300	1	300	
CUSTODIAL & MAINTENANCE			2,075	
Custodian's Office	150	1	150	
Custodian's Workshop	250	1	250	
Custodian's Storage	375	1	375	
Recycling Room / Trash	400	1	400	
Receiving and General Supply	300	1	300	
Storeroom	400	1	400	
Network / Telecom Room	200	1	200	
OTHER			0	
Other (specify)				

Less space allocation in Charter Schools

MSBA Guidelines: Elementary Schools

	MSBA Guidelines (refer to MSBA Educational Program & Space Standard Guidelines)			
ROOM TYPE	ROOM NFA ¹	# OF RMS	area totals	Comments
CORE ACADEMIC SPACES		0	0	
<i>(List classrooms of different sizes separately)</i>				
Pre-Kindergarten w/ toilet	1,200		-	1,100 SF min - 1,300 SF max
Kindergarten w/ toilet	1,200	0	-	1,100 SF min - 1,300 SF max
General Classrooms - Grade 1-6	950	0	-	900 SF min - 1,000 SF max
SPECIAL EDUCATION			500	
<i>(List rooms of different sizes separately)</i>				
Self-Contained SPED	950	0	-	8% of pop. in self-contained SPED
Self-Contained SPED - toilet	60	0	-	
Resource Room	500	0	-	1/2 size Genl. Clrm.
Small Group Room / Reading	500	1	500	1/2 size Genl. Clrm.
ART & MUSIC			0	
Art Classroom - 25 seats	1,000	0	-	assumed schedule 2 times / week / student
Art Workroom w/ Storage & kiln	150	0	-	
Music Classroom / Large Group - 25-50 seats	1,200	0	-	assumed schedule 2 times / week / student
Music Practice / Ensemble	75	0	-	
HEALTH & PHYSICAL EDUCATION			6,300	
Gymnasium	6,000	1	6,000	6000 SF Min. Size
Gym Storeroom	150	1	150	
Health Instructor's Office w/ Shower & Toilet	150	1	150	
MEDIA CENTER			2,020	
Media Center / Reading Room	2,020	1	2,020	
DINING & FOOD SERVICE			3,000	
Cafeteria / Dining	0	1	-	2 seatings - 15SF per seat
Stage	1,000	1	1,000	
Chair / Table / Equipment Storage	200	1	200	
Kitchen	1,600	1	1,600	1600 SF for first 300 + 1 SF/student Add'l
Staff Lunch Room	200	1	200	20 SF/Occupant

MEDICAL			310	
Medical Suite Toilet	60	1	60	
Nurses' Office / Waiting Room	250	1	250	
Examination Room / Resting	100	0	-	
ADMINISTRATION & GUIDANCE			1,865	
General Office / Waiting Room / Toilet	300	1	300	
Teachers' Mail and Time Room	100	1	100	
Duplicating Room	150	1	150	
Records Room	110	1	110	
Principal's Office w/ Conference Area	375	1	375	
Principal's Secretary / Waiting	125	1	125	
Assistant Principal's Office	120	0	-	
Supervisory / Spare Office	120	1	120	
Conference Room	250	1	250	
Guidance Office	150	0	-	
Guidance Storeroom	35	1	35	
Teachers' Work Room	300	1	300	
CUSTODIAL & MAINTENANCE			1,900	
Custodian's Office	150	1	150	
Custodian's Workshop	375	1	375	
Custodian's Storage	375	1	375	
Recycling Room / Trash	400	1	400	
Receiving and General Supply	200	1	200	
Storeroom	200	1	200	
Network / Telecom Room	200	1	200	
OTHER			0	
Other <i>(specify)</i>				
Total Building Net Floor Area (NFA)			15,895	
Proposed Student Capacity / Enrollment			0	
Total Building Gross Floor Area (GFA) ²			-	
Grossing factor (GFA/NFA)			0.00	

MSBA Guidelines: Elementary Schools

	MSBA Guidelines (refer to MSBA Educational Program & Space Standard Guidelines)			
ROOM TYPE	ROOM NFA ¹	# OF RMS	area totals	Comments
CORE ACADEMIC SPACES		0	0	
<i>(List classrooms of different sizes separately)</i>				
Pre-Kindergarten w/ toilet	1,200		-	1,100 SF min - 1,300 SF max
Kindergarten w/ toilet	1,200	0	-	1,100 SF min - 1,300 SF max
General Classrooms - Grade 1-6	950	0	-	900 SF min - 1,000 SF max
SPECIAL EDUCATION			500	
<i>(List rooms of different sizes separately)</i>				
Self-Contained SPED	950	0	-	8% of pop. in self-contained SPED
Self-Contained SPED - toilet	60	0	-	
Resource Room	500	0	-	1/2 size Genl. Clrm.
Small Group Room / Reading	500	1	500	1/2 size Genl. Clrm.
ART & MUSIC			0	
Art Classroom - 25 seats	1,000	0	-	assumed schedule 2 times / week / student
Art Workroom w/ Storage & kiln	150	0	-	
Music Classroom / Large Group - 25-50 seats	1,200	0	-	assumed schedule 2 times / week / student
Music Practice / Ensemble	75	0	-	
HEALTH & PHYSICAL EDUCATION			6,300	
Gymnasium	6,000	1	6,000	6000 SF Min. Size
Gym Storeroom	150	1	150	
Health Instructor's Office w/ Shower & Toilet	150	1	150	
MEDIA CENTER			2,020	
Media Center / Reading Room	2,020	1	2,020	
DINING & FOOD SERVICE			3,000	
Cafeteria / Dining	0	1	-	2 seatings - 15SF per seat
Stage	1,000	1	1,000	
Chair / Table / Equipment Storage	200	1	200	
Kitchen	1,600	1	1,600	1600 SF for first 300 + 1 SF/student Add'l
Staff Lunch Room	200	1	200	20 SF/Occupant

Less space allocation in Charter Schools

Not typically included in Charter Schools

MEDICAL			310	
Medical Suite Toilet	60	1	60	
Nurses' Office / Waiting Room	250	1	250	
Examination Room / Resting	100	0	-	
ADMINISTRATION & GUIDANCE			1,865	
General Office / Waiting Room / Toilet	300	1	300	
Teachers' Mail and Time Room	100	1	100	
Duplicating Room	150	1	150	
Records Room	110	1	110	
Principal's Office w/ Conference Area	375	1	375	
Principal's Secretary / Waiting	125	1	125	
Assistant Principal's Office	120	0	-	
Supervisory / Spare Office	120	1	120	
Conference Room	250	1	250	
Guidance Office	150	0	-	
Guidance Storeroom	35	1	35	
Teachers' Work Room	300	1	300	
CUSTODIAL & MAINTENANCE			1,900	
Custodian's Office	150	1	150	
Custodian's Workshop	375	1	375	
Custodian's Storage	375	1	375	
Recycling Room / Trash	400	1	400	
Receiving and General Supply	200	1	200	
Storeroom	200	1	200	
Network / Telecom Room	200	1	200	
OTHER			0	
Other <i>(specify)</i>				
Total Building Net Floor Area (NFA)			15,895	
Proposed Student Capacity / Enrollment			0	
Total Building Gross Floor Area (GFA) ²			-	
Grossing factor (GFA/NFA)			0.00	

Not typically included in Charter Schools

Less space allocation in Charter Schools

SF per Student Comparison

	MSBA Guidelines	Typical Charter School
Elementary Schools	145—180 GSF / student	100 GSF / student
Middle School	160—190 GSF / student	100 GSF / student
High School	185—205 GSF / student	100 GSF / student

General Classrooms

	MSBA Guidelines	Typical Charter School
Elementary Pre-K/K Clasrooms	1,100—1,300 NSF	900—1,000 NSF
Elementary Core Classrooms	900—1,000 NSF	750 NSF
Middle Core Classrooms	850—950 NSF	750 NSF
High School General Classrooms	850—950 NSF	750 NSF

Science and Special Education Classrooms

	MSBA Guidelines	Typical Charter School
Middle School Science Classrooms	1,200 NSF	850—950 NSF
High School Science Classrooms	1,440 NSF	850—1,000 NSF
Special Education Classrooms	Guidelines assume 16% of population; special programs; self-contained classrooms	Typically push-in with limited break-out rooms

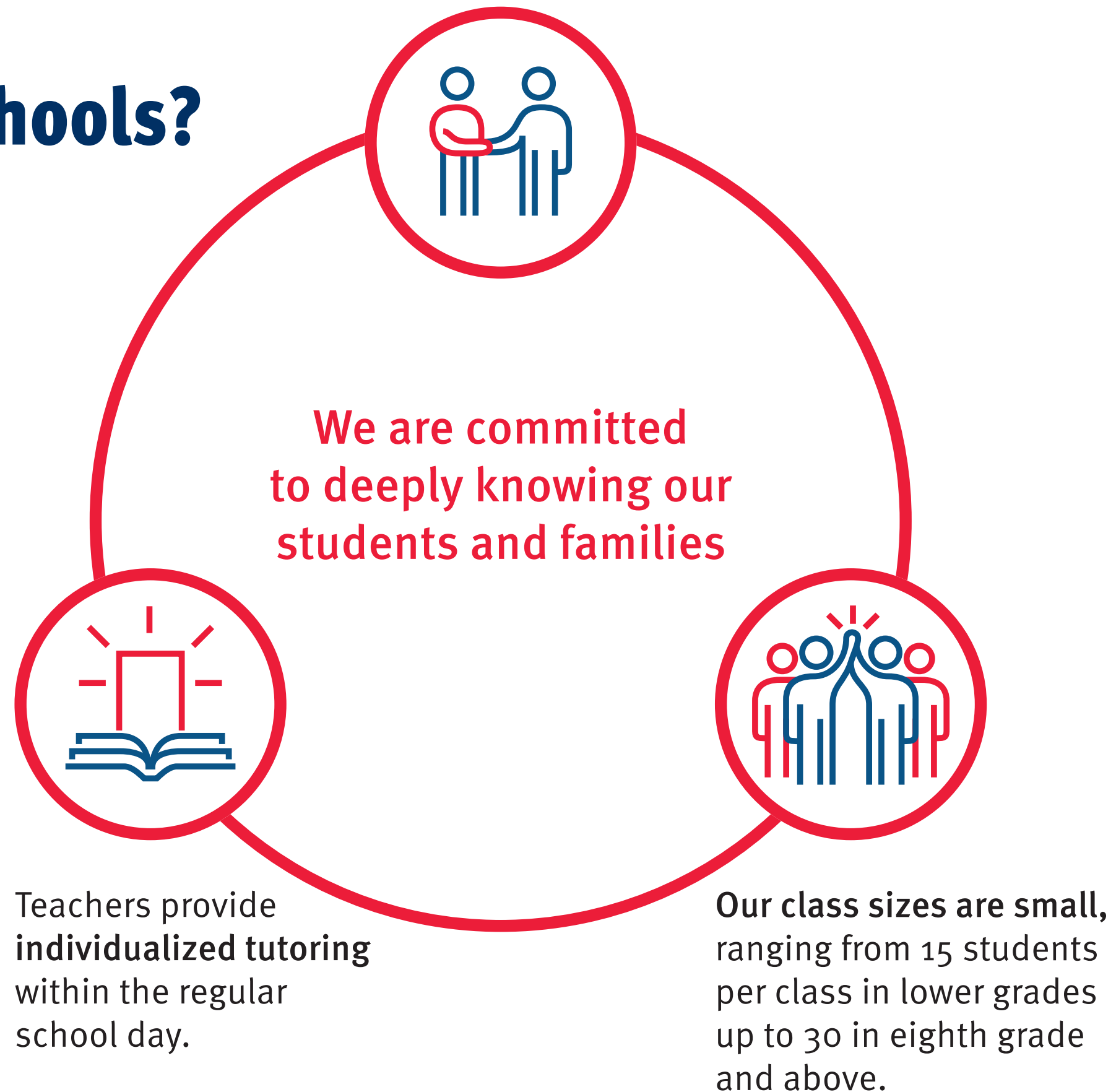
Administration and Support Spaces

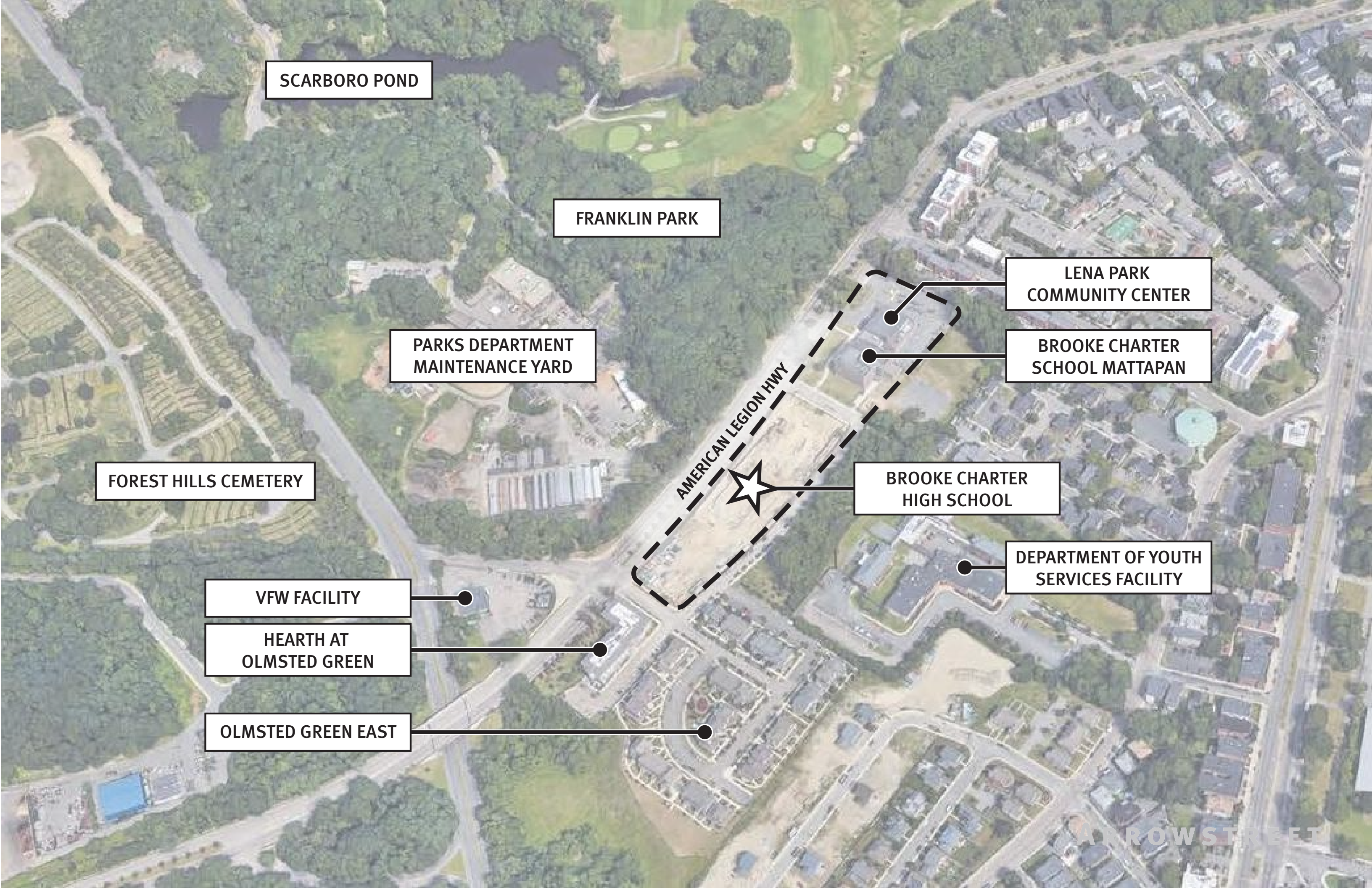
	MSBA Guidelines	Typical Charter School
Teacher Planning Areas	300 NSF	300—450 NSF
Kitchen and serving area	1,600 NSF	<1,000 NSF
Dining area	15 GSF/student	15 GSF/student
Administration	1,865—2,920 NSF	2,500 NSF

Specialty Spaces

	MSBA Guidelines	Typical Charter School
Art and Music	1,000 NSF	750—850 NSF
Elementary School Gym	6,000 NSF	4,700—5,500 NSF
High School Gym	12,000 NSF	7,000—8,000 NSF
Media Center	2,020—3,650 NSF	Varies
High School Auditorium/Stage	2,650 NSF	Varies

What Defines Brooke Charter Schools?





SCARBORO POND

FRANKLIN PARK

PARKS DEPARTMENT
MAINTENANCE YARD

FOREST HILLS CEMETERY

VFW FACILITY

HEARTH AT
OLMSTED GREEN

OLMSTED GREEN EAST

AMERICAN LEGION HWY

BROOKE CHARTER
HIGH SCHOOL

DEPARTMENT OF YOUTH
SERVICES FACILITY

LENA PARK
COMMUNITY CENTER

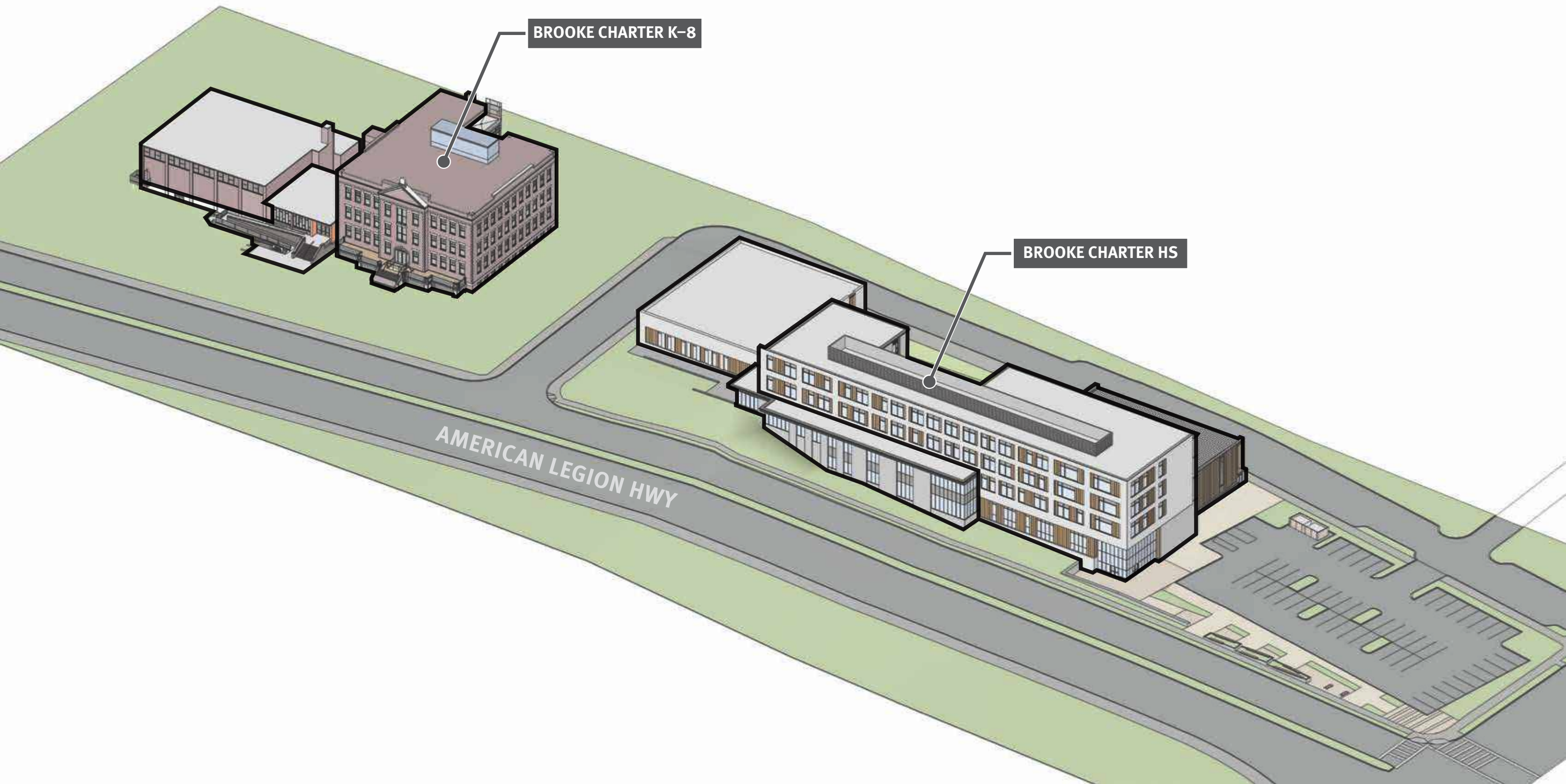
BROOKE CHARTER
SCHOOL MATTAPAN

ARROW STREET



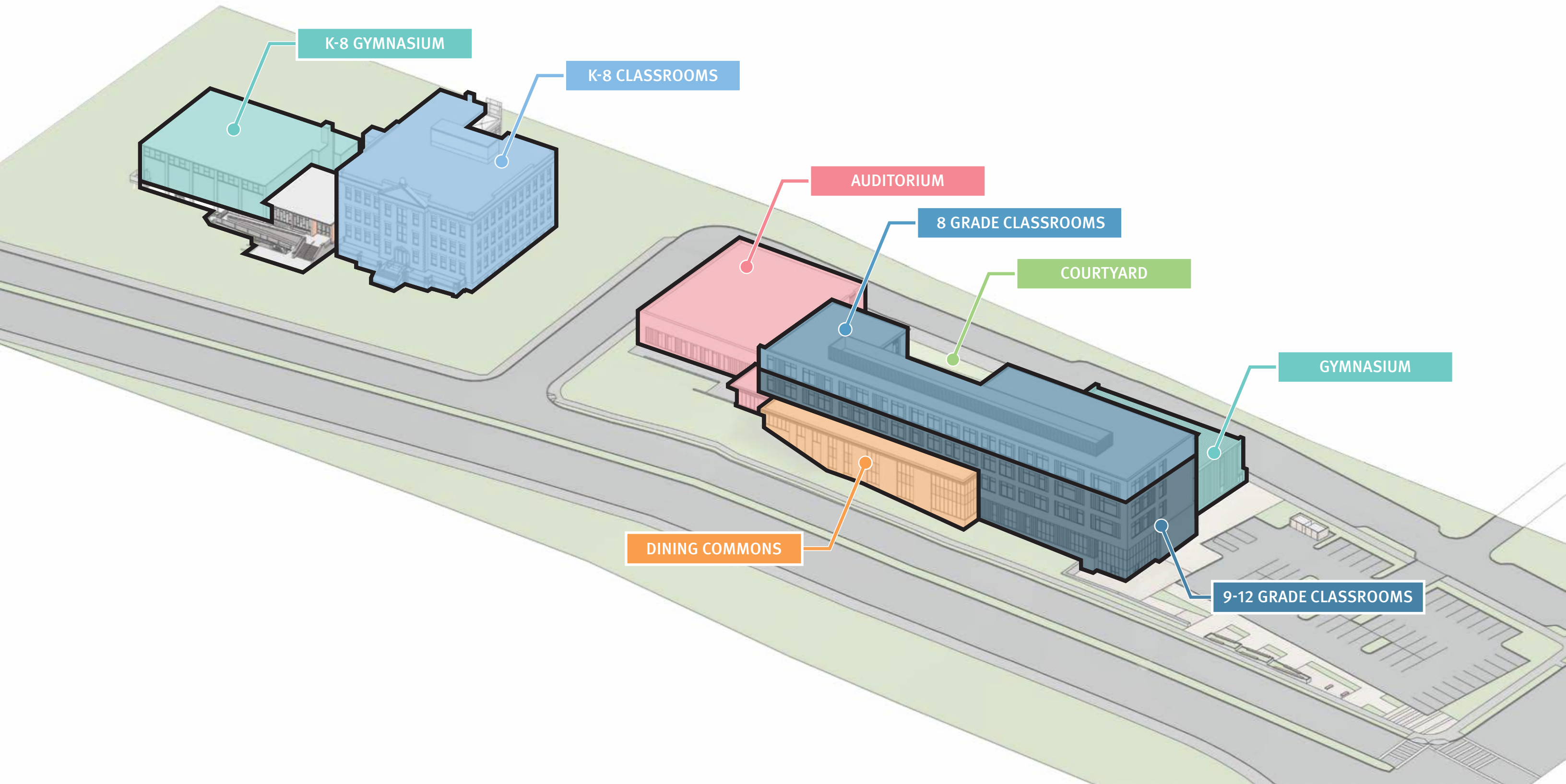
DEVELOPING CITIZENS EMBEDDED IN THE COMMUNITY

ARROWSTREET



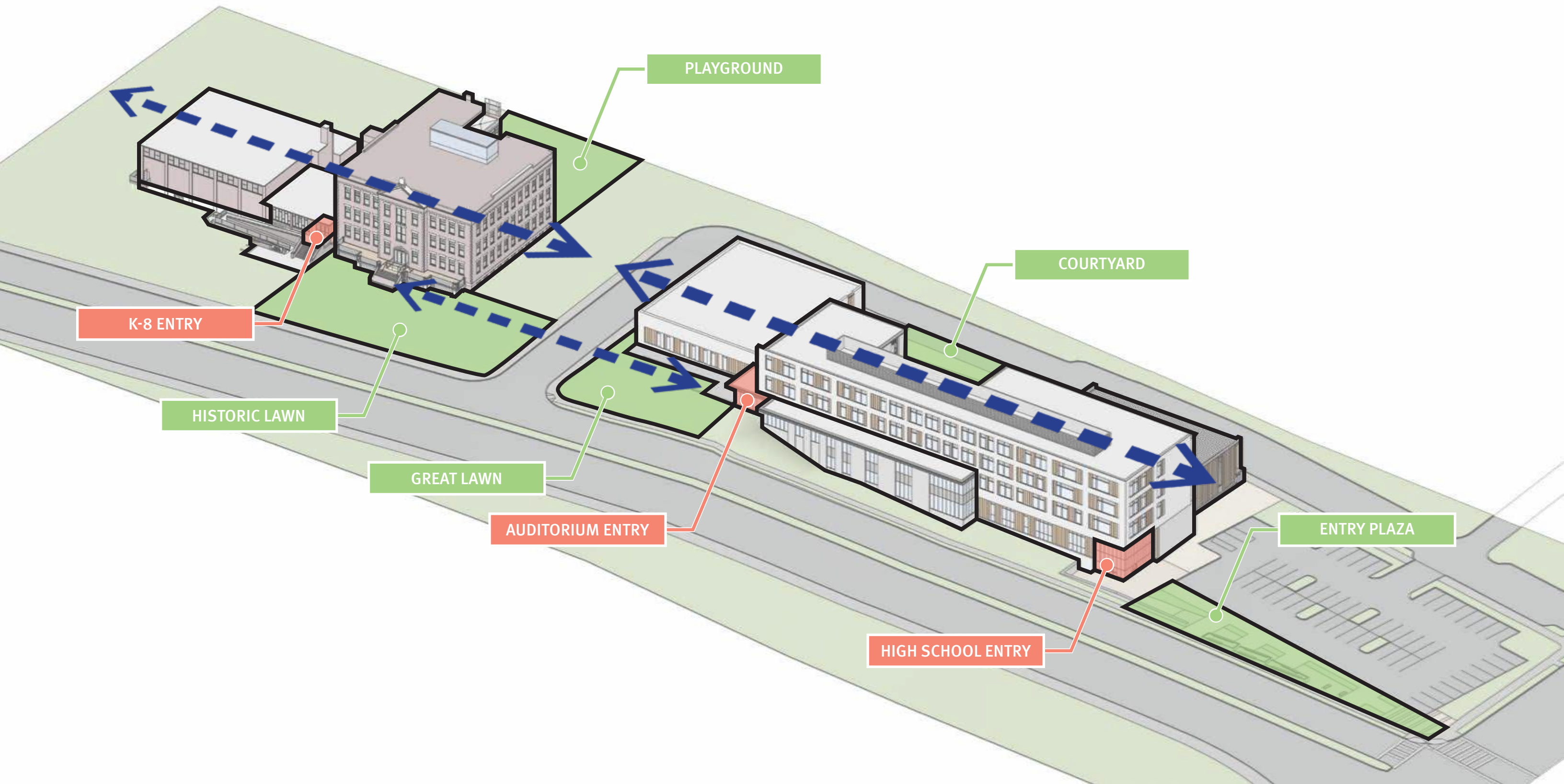
DEVELOPING CITIZENS EMBEDDED IN THE COMMUNITY

ARROWSTREET



DEVELOPING CITIZENS EMBEDDED IN THE COMMUNITY

ARROWSTREET



DEVELOPING CITIZENS EMBEDDED IN THE COMMUNITY

ARROWSTREET



DEVELOPING CITIZENS EMBEDDED IN THE COMMUNITY

ARROWSTREET



ENTRY FORECOURT
& PUBLIC PLAZA

SCHOOL /
AUDITORIUM
ENTRY

ACADEMIC
COURTYARD

DEVELOPING CITIZENS EMBEDDED IN THE COMMUNITY

ARROWSTREET



DEVELOPING CITIZENS EMBEDDED IN THE COMMUNITY

ARROWSTREET



DEVELOPING CITIZENS EMBEDDED IN THE COMMUNITY

ARROWSTREET



AMERICAN LEGION HIGHWAY

KINGBIRD ROAD
(PRIVATE ~ 60' WIDE)

MAKER-
SPACE GYM

ADMINISTRATION


GYMNASIUM

EAST MAIN STREET
(PRIVATE ~ 54' WIDE)

N/F
COMMONWEALTH OF
MASSACHUSETTS

LOWER LEVEL

ARROWSTREET

A close-up photograph of a deep red wall. A modern light fixture with two long, cylindrical, cream-colored tubes hangs from the ceiling. The tubes are positioned to frame the text on the wall. The text is in a white, serif font.

“Your place is
anywhere
you want
to make it.”

SENATOR
EDWARD W. BROOKE III



ARROWSTREET



SMALL CLASS SIZES

ARROWSTREET

AMERICAN LEGION HIGHWAY

DINING COMMONS

DANCE

MUSIC

ART

AUDITORIUM

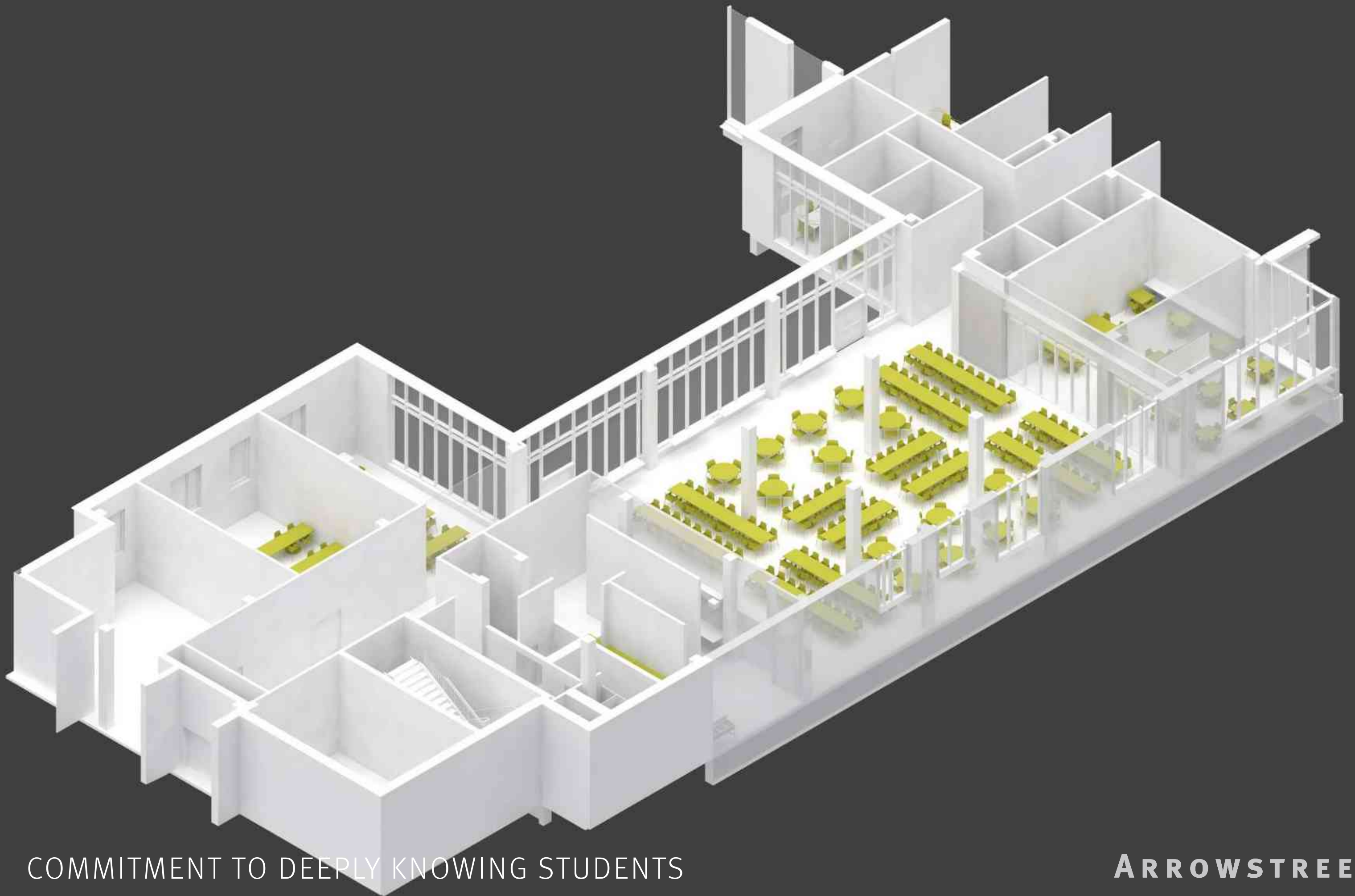
EAST MAIN STREET

N/F
COMMONWEALTH OF
MASSACHUSETTS

ARROWSTREET

LEVEL ONE





COMMITMENT TO DEEPLY KNOWING STUDENTS

ARROWSTREET



DINING COMMONS

ART.

COMMITMENT TO DEEPLY KNOWING STUDENTS

ARROWSTREET



COMMITMENT TO DEEPLY KNOWING STUDENTS

ARROWSTREET



INDIVIDUALIZED TUTORING



ARROWSTREET



Brooke HIGH SCHOOL

WHEN, WHERE, TIME
WHEN: November 2nd, 2018 Friday
WHERE: Brooke High School gym
Time: 5:30
Any tickets in library
per person: \$5
Please to Brooke and someone from out of Brooke: \$6 "All out town!"
At the time for a person from Brooke: \$5 and can not bring someone from out of Brooke

COMMITMENT TO DEEPLY KNOWING STUDENTS

ARROWSTREET



HIGH SCHOOL

Good morning,
Brooke
High!

MAT RYAN
ROSINDALE
JAMIE AGAR
EAST BOSTON
HIGH SCHOOL

COMMITMENT TO DEEPLY KNOWING STUDENTS

ARROWSTREET

AMERICAN LEGION HIGHWAY

ROBOTICS / COMP. SCI

SCIENCE LABS

AUDITORIUM

EAST MAIN STREET

N/F
COMMONWEALTH OF
MASSACHUSETTS

ARROWSTREET

LEVEL TWO





SMALL CLASS SIZES

ARROWSTREET



SCIENCE AND ROBOTICS CLASSROOMS ARE PROMINENTLY LOCATED

ARROWSTREET

AMERICAN LEGION HIGHWAY

MATH / HUMANITIES CLASSROOMS

EAST MAIN STREET
(PRIVATE ~ 54' WIDE)

N/F
COMMONWEALTH OF
MASSACHUSETTS

ARROWSTREET

LEVEL THREE



SMALL CLASS SIZES

ARROWSTREET



GRAPHICS REINFORCE THE SCHOOL'S MISSION

ARROWSTREET

AMERICAN LEGION HIGHWAY

8th GRADE ACADEMY

EAST MAIN STREET
(PRIVATE ~ 54' WIDE)

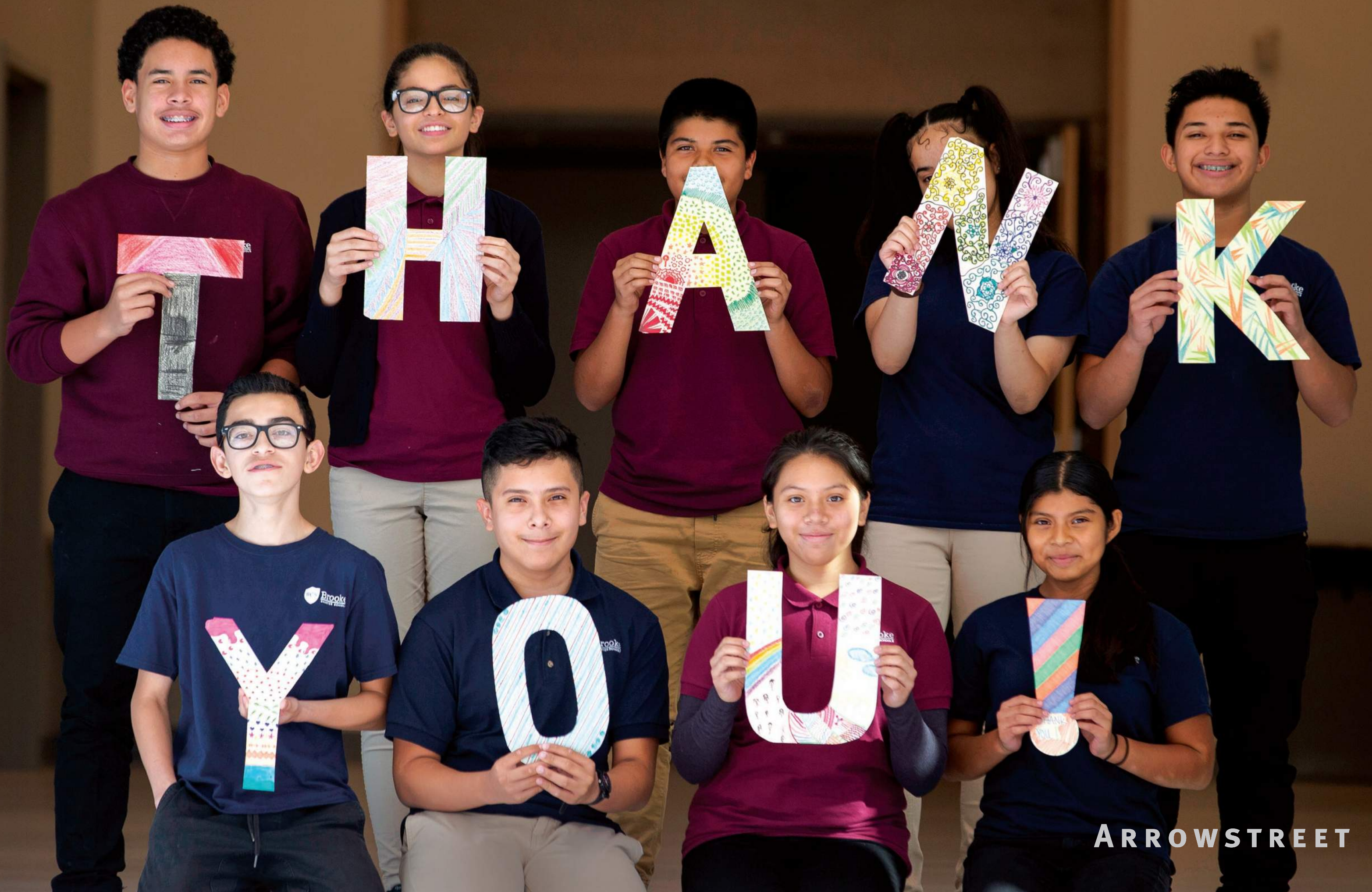
N/F
COMMONWEALTH OF
MASSACHUSETTS

ARROWSTREET

LEVEL FOUR







ARROWSTREET