



LAURENTIAN ELEMENTARY
1409 PROGRESS PARKWAY



LAURENTIAN ELEMENTARY

Eveleth, Minnesota

Laurentian Elementary, the first of three new Rock Ridge schools, is located in the Iron Range of northern Minnesota, serving the communities of Eveleth, Gilbert, and Virginia — who were previously rivals. The newly consolidated district's goal is to embody the standard of "Best in the World" and foster the 21st century skills of Critical Thinking, Communication, Collaboration, Creativity, and Citizenship.

The design is a product of an extensive engagement process which included community, teacher, and student workshops starting pre-referendum and at each phase through construction. The robust co-creative process was critical in building trust and developing innovative spaces and programs that reflect the needs of the community today and in the future.

The design elevates students' learning experiences through flexible and adaptable learning neighborhoods, specialty maker spaces for technology and innovation, and environments for movement and play. The interior celebrates local natural resources, including steel and wood, while grounded with timeless and durable materials like terrazzo, rubber, and tile. Life cycle costs were evaluated to prioritize materials with lower long-term investments.

Learning neighborhoods are composed of single and double learning studios, group rooms, staff resources, inclusive restrooms, and collaborative learning commons allowing students and staff to feel supported throughout the day. Learning commons within each neighborhood house dispersed media resources; making relevant books and technology easily accessible versus being tucked away in a dedicated media center. This approach saved on square footage and was a strategic cost savings measure that did not compromise the educational vision.

Movement and play are associated with decreased stress, increased creativity and focus, and improved physical health; and they are fundamental to cognitive, social and emotional growth. Indoor play was a special need that the design team addressed due to northern Minnesota's intense winters. A welcoming indoor-outdoor play space encourages play during all four seasons, and it is located at the heart of the school to make it accessible to all.



Site + Level 1

A Receiving	F Electrical	K Office	P Studio	U Science
B Sensory	G Group	L Reception	Q Gym	V Music
C Pre-K	H Staff	M Vestibule	R Community	W Computer Room
D Kindergarten	I Storage	N Commons	S DCD	X Tech
E Custodial	J Kitchen	O Art	T Nurse	



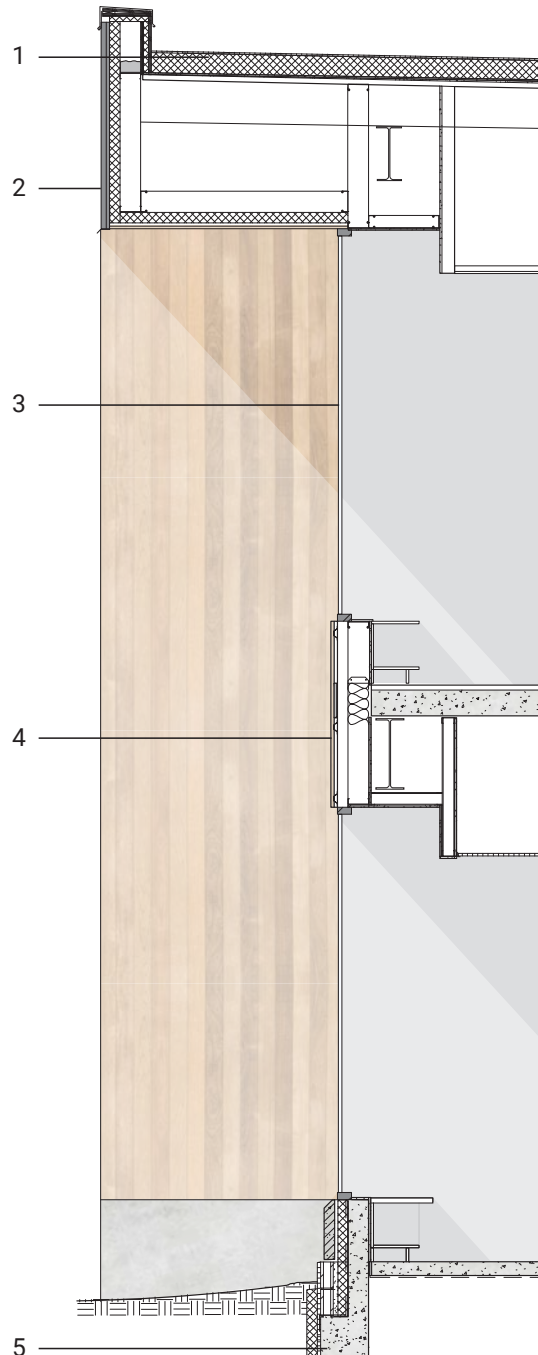
Level 2

Learning Commons
Learning Studios









BUILDING ENVELOPE

Rock Ridge School District was committed to providing an energy-efficient building within their budget. Several envelope systems paired with mechanical systems were evaluated to determine the most efficient and cost-effective approach, and the team concluded that investing in a high-performing envelope would allow for perimeter heating systems to be eliminated. Upon completion of a whole building blower-door test, the building out-performed the designed infiltration rate of 0.05 cfm/sf (code maximum is 0.40 cfm/sf) and achieved an infiltration rate of 0.036 cfm/sf, significantly benefitting energy use.

A better envelope.

1. R-35 roof
2. corrugated metal panel
3. wood curtainwall
4. wood composite cladding
5. R-14 foundation walls





