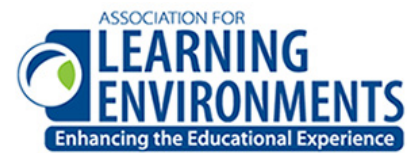


2020 A4LE Shaw Award

LARAWAY ELEMENTARY SCHOOL

THIS IS OUR SCHOOL

*Community drives design of new
preK-8 school with 98% low-income students*



“

The entire community felt like
they were part of the process.

– Saul Brass, Laraway School Board Vice President



EDUCATIONAL VISION

Laraway School had changed little since the 1950s. Additionally, nearly 98% of its students are low-income.

The district wanted a new preK-8 school for half the budget of similar-sized schools nearby.

Goals included:

Incorporate school community input

Reduce bullying and promote camaraderie

Encourage learning beyond the classroom

Celebrate Joliet region



▲ The old school had overcrowded spaces, sparse natural light, aging infrastructure, and skyrocketing maintenance costs.



▲ During one student visioning session, a kindergartner created this drawing of an older and a younger student getting along.

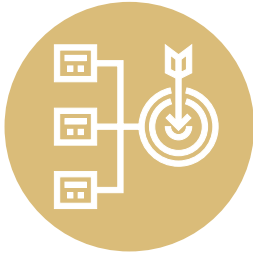


▲ Community and student visioning sessions



PLANNING PROCESS

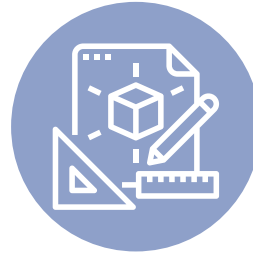
Key Stakeholders



Focus Groups
determined goals
and needs.



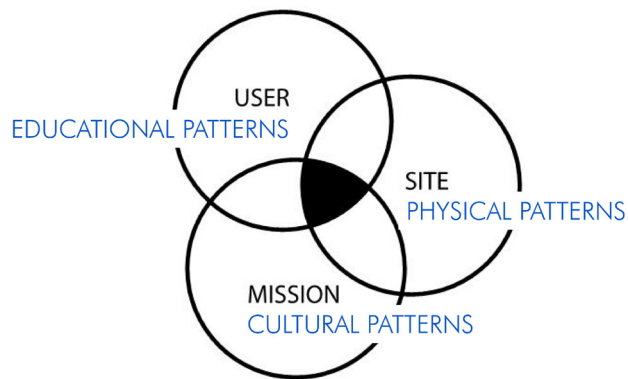
A 12-person **Design
Committee** developed
layout concepts.



A **Core Team**
reviewed/tweaked
conceptual designs.



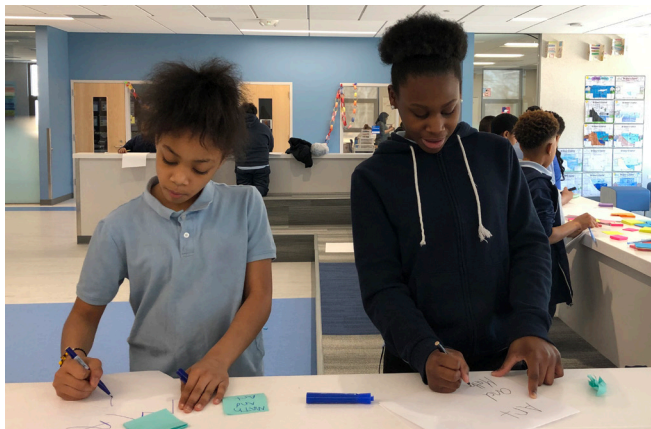
**Community
Engagement Forums**
solicited community
feedback.



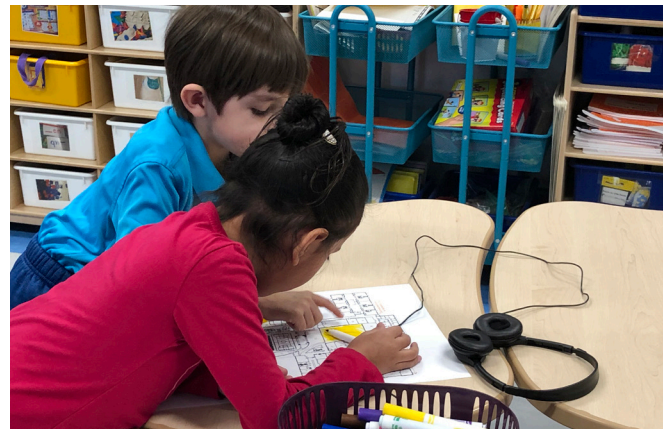
▲ Building concept development



▲ Design Committee concepts



▲ Student workshops



DESIGN SOLUTION

Educational Patterns

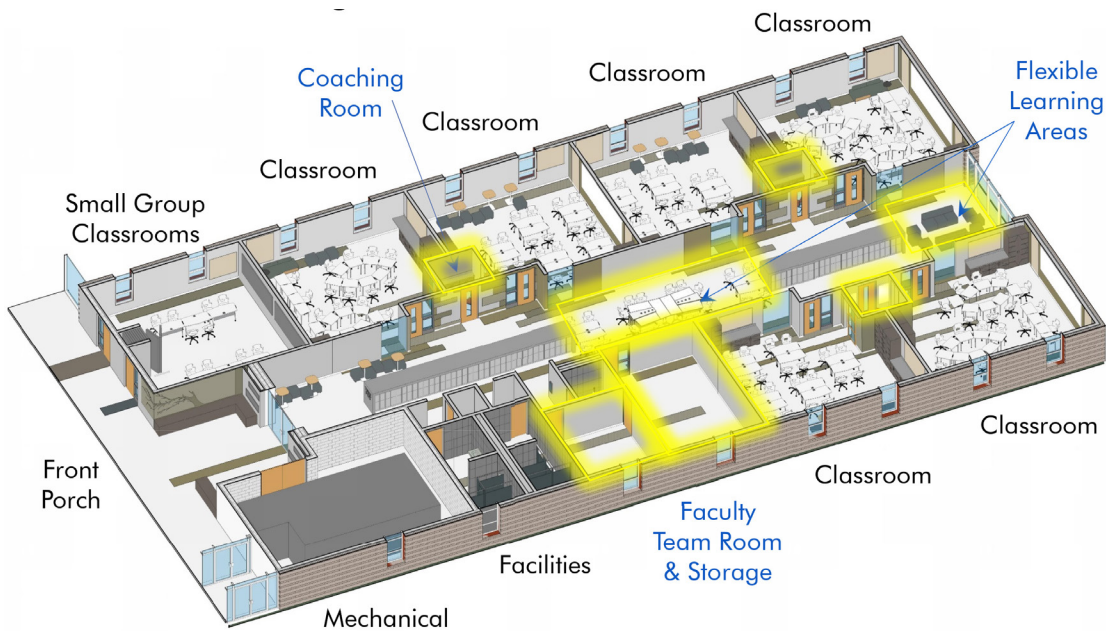
Grade level neighborhoods surround central courtyard

Each neighborhood offers active/flexible core space

Team centers encourage teacher collaboration



▲ Each neighborhood has a front porch.

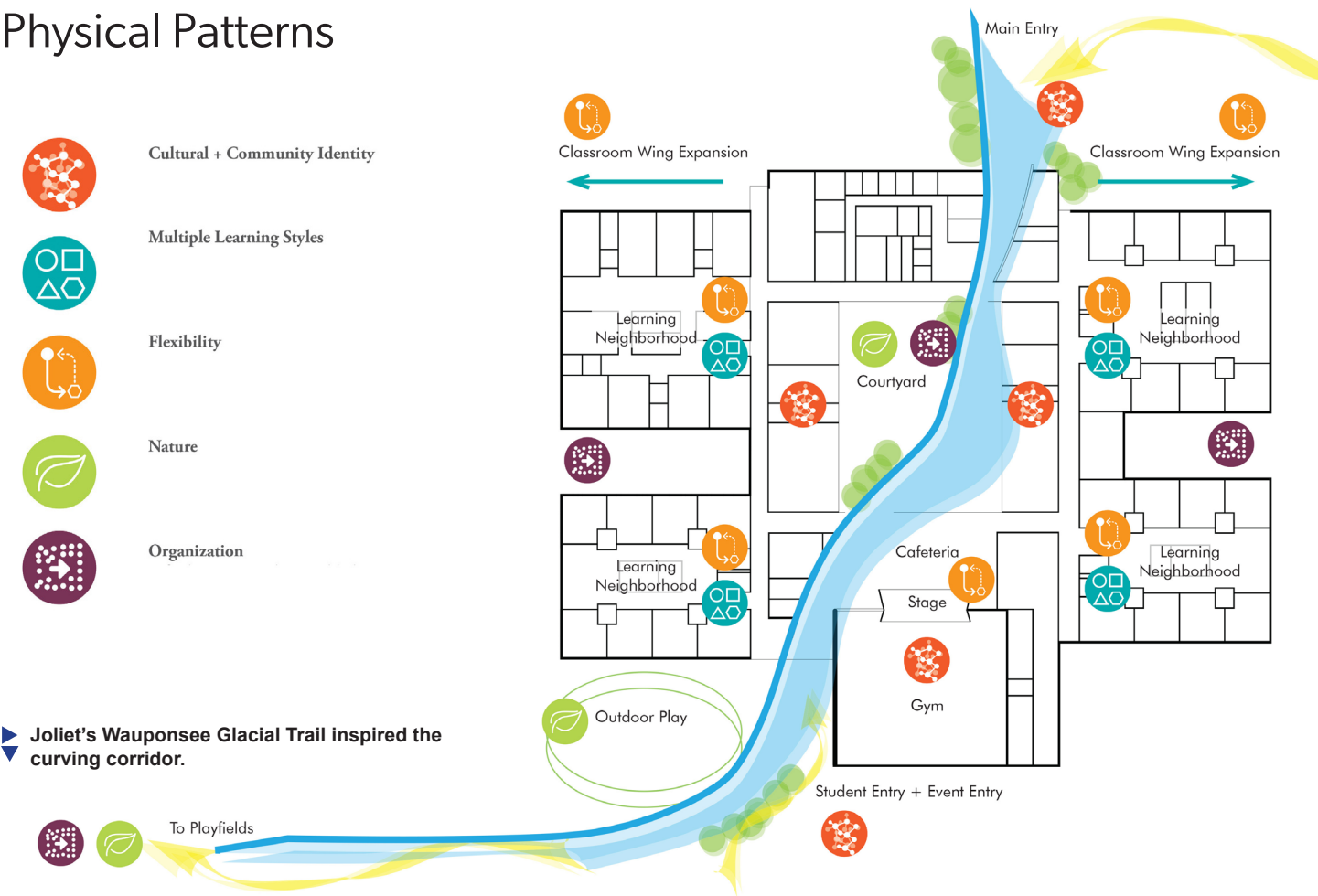


▶ Central lockers expose wall space for windows, writing surfaces, and tackboards.

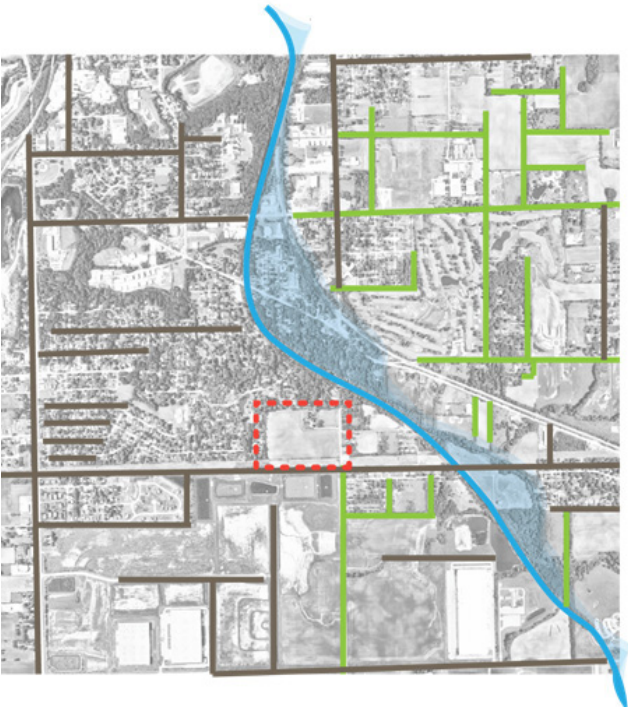


DESIGN SOLUTION

Physical Patterns



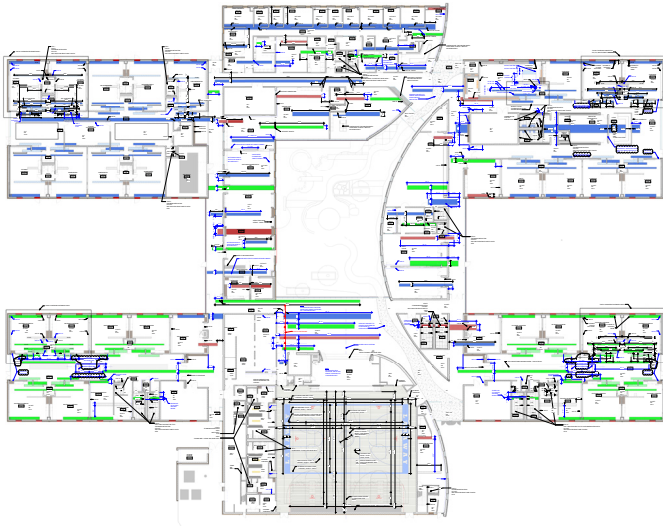
Joliet's Wauponsee Glacial Trail inspired the curving corridor.



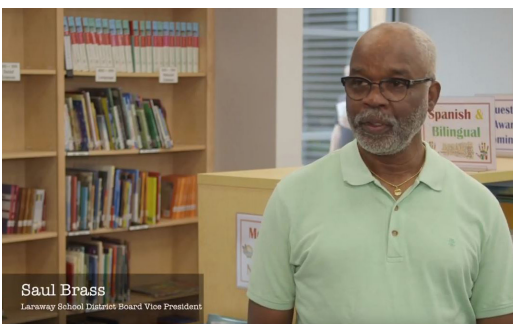
Green metal returns at window jambs suggest windbreaks or crops.

DESIGN SOLUTION

Cultural Patterns



▲ The linear layout, east/west orientation, and floor/lighting patterns reference Joliet's farming history.



◀ See board members discuss shortcomings of the old school, the planning process, and the impact the new school has made: <http://bit.ly/LarawayVideo>



▲ A curving "quarry wall" acknowledges Joliet's limestone quarrying heritage.

CHALLENGES AND SOLUTIONS

CHALLENGE Required disadvantaged community to pass referendum

SOLUTION Planning effort led to 80% “yes” vote

CHALLENGE Concerns about older students bullying younger ones

SOLUTION Neighborhoods and circulation separate younger and older students

CHALLENGE Create advanced educational environment despite restrictive budget

SOLUTION Linear design, neighborhoods, active/flexible zones, daylight/views

CHALLENGE Some students not learning proper hygiene at home

SOLUTION Nursing office showers and laundry room



▲ Coaching rooms connect each pair of classrooms.

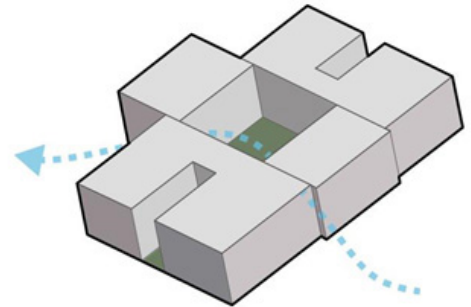
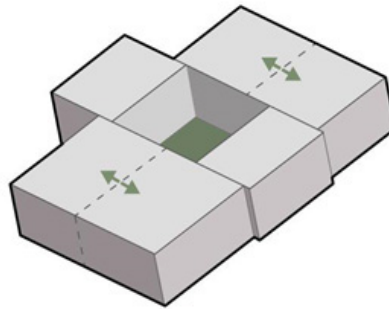
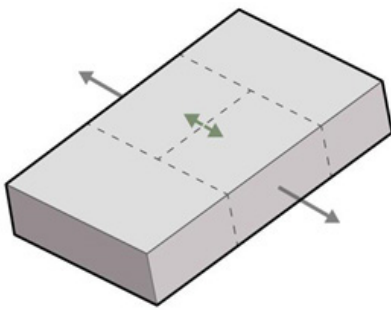


▲ The modular tech lab ties into Joliet Township High School's Career Academies.

COST EFFECTIVENESS



- ▲ When marketplace demand for precast concrete peaked, the team converted the precast design to masonry to complete construction on time and avoid delivery premiums.



- ▲ The design pulls apart a simple box to open to surroundings and save costs.

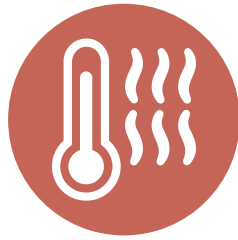


- ◀ Metal in window jambs saves money and creates visual interest.

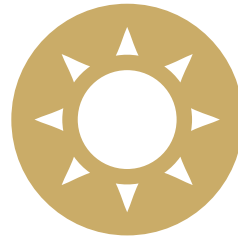
GREEN FEATURES



Roof and wall insulation exceed minimum R values



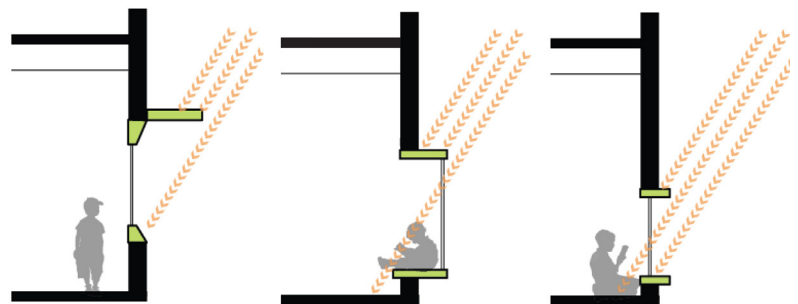
All mechanical units have heat recovery



Daylight harvesting system



Rain gardens and bioswales



▲ Designers used sun studies to maximize natural light, while minimizing glare and shadows.

LARAWAY LESSONS



▲ Students see the new Laraway.



The Laraway School story proves that districts serving disadvantaged families can unite communities to create cost-effective learning settings that emphasize student performance and regional nuances.

“
In the old school, students weren't too excited to wear shirts or jackets with the Laraway logo, but now they're proud.

– Michelle Matenaer, Laraway School Board secretary

