

JOPLIN HIGH SCHOOL



JOPLIN HIGH SCHOOL

The "Vision" for the new Joplin High School was crafted by over 50 faculty, students, community, and district administration in a three day exploration with the design team of what the new high schools aspiration will be.

Create relationships and relevancy that inspires personalized innovation and achievement for continual transformation of our youth, staff and community.

To measure how the team could reach such a lofty vision the team created "Guiding Principles" to be used as the design process continued. These principles became the metric when making design decisions.

Spirit of Exploration

Connectedness

Comfortable, Fun and Cool "Vibe" (student generated)

Innovation for All

Celebrate Success

The "Vision" team created one and two word personality traits for the new facility.

Gathering Community

Outside in

No 'hallways"

Classroom outdoors

Areas were "I belong"

Whimsical

Modern composition

Apple-y

A chance for every student to shine

Expose life of the building

The sustainable goal of the school is "stick to the basics". The sustainable strategies are to be environmentally responsive to the site and design efficient systems that are energy star or better. When possible take advantage of passive opportunities to be "green" such as the "rain water harvesting" gravity flow system for landscape irrigation.

This "Vision" paired with a "career pathway curriculum" defined the pedagogy for teaching and learning opportunities of the school. The opportunity for all 2,500 students to see advanced classes on display every day is the goal of the school. All the highly active project based classes occur on the main floor of all the five career pathways and the technical center visible through glass or open to a social commons, such as Eagle Alley where the entrepreneurial, creative and retail "pop up" activity can occur.

The school itself is broken into small learning environments that are dedicated to a career pathway and each environment is defined by "Archetypes" defined by Dr. David Thornburg in his book *Campfires in Cyberspace*, *Primordial Metaphors for Learning in the 21st Century*, and the Apple Education Leadership Summits.

The **campfire**...Storytelling as teaching, the classroom. As Robert Frost said, "We sit in the circle and suppose, while the truth sits in the center and knows." However the classroom cannot stand alone.

The **watering hole**...Learning at the watering hole is less formal and peer to peer. So, each participant in these spaces are both learner and teacher.

The **cave**...To isolate one's self or a small group to gain special insights or collaborate in a focused manner.

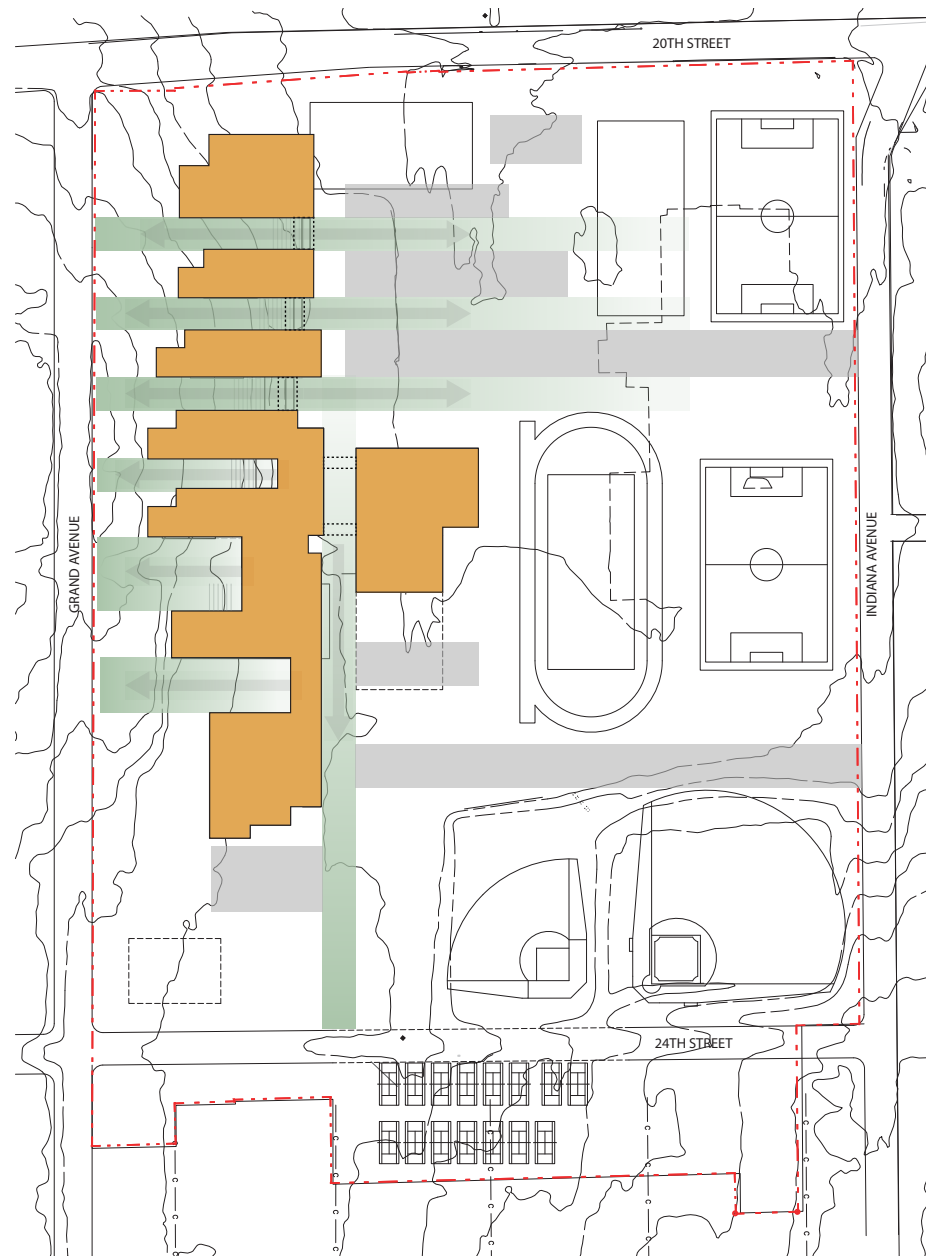
Spaces like the Mountain top, for the presentation of accomplishment and Laboratory for discovery are imbedded in each career pathway.

An over 230 page Design Manual become the resultant of this exhaustive design process.

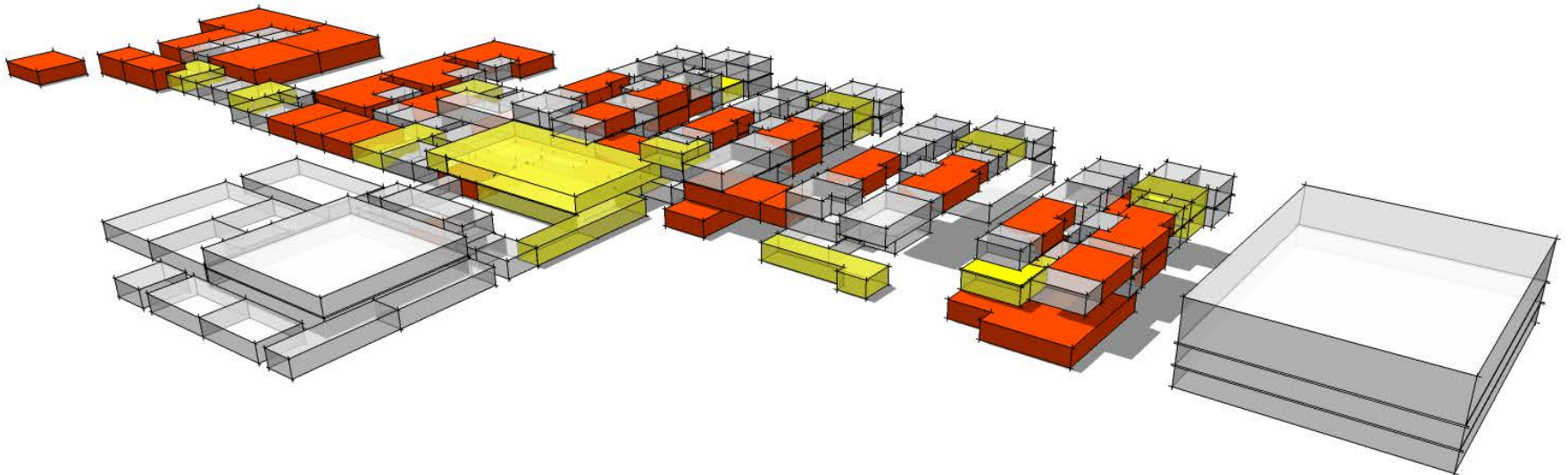
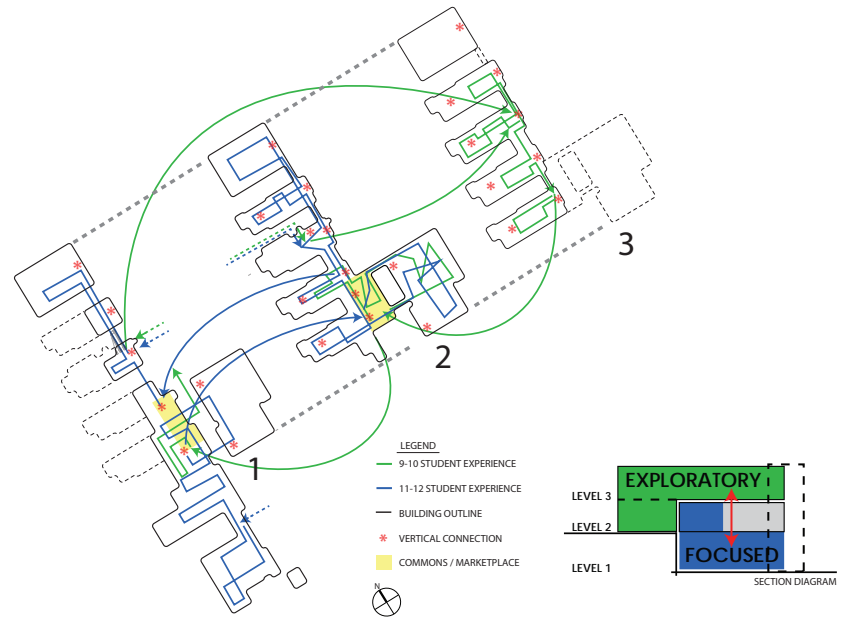
MAIN ENTRANCE AND ELEVATED
CORRIDOR LINKS TO SMALL
LEARNING COMMUNITIES



CONCEPT
INTERTWINING GREEN SPACE WITH THE BUILDING
TO BREAK DOWN THE SCALE AND CREATE
CONNECTION TO OUTSIDE AND NATURAL LIGHT.



STUDENT EXPERIENCE UTILIZING VERTICAL CONNECTION TO REINFORCE STUDENT EXPLORATION



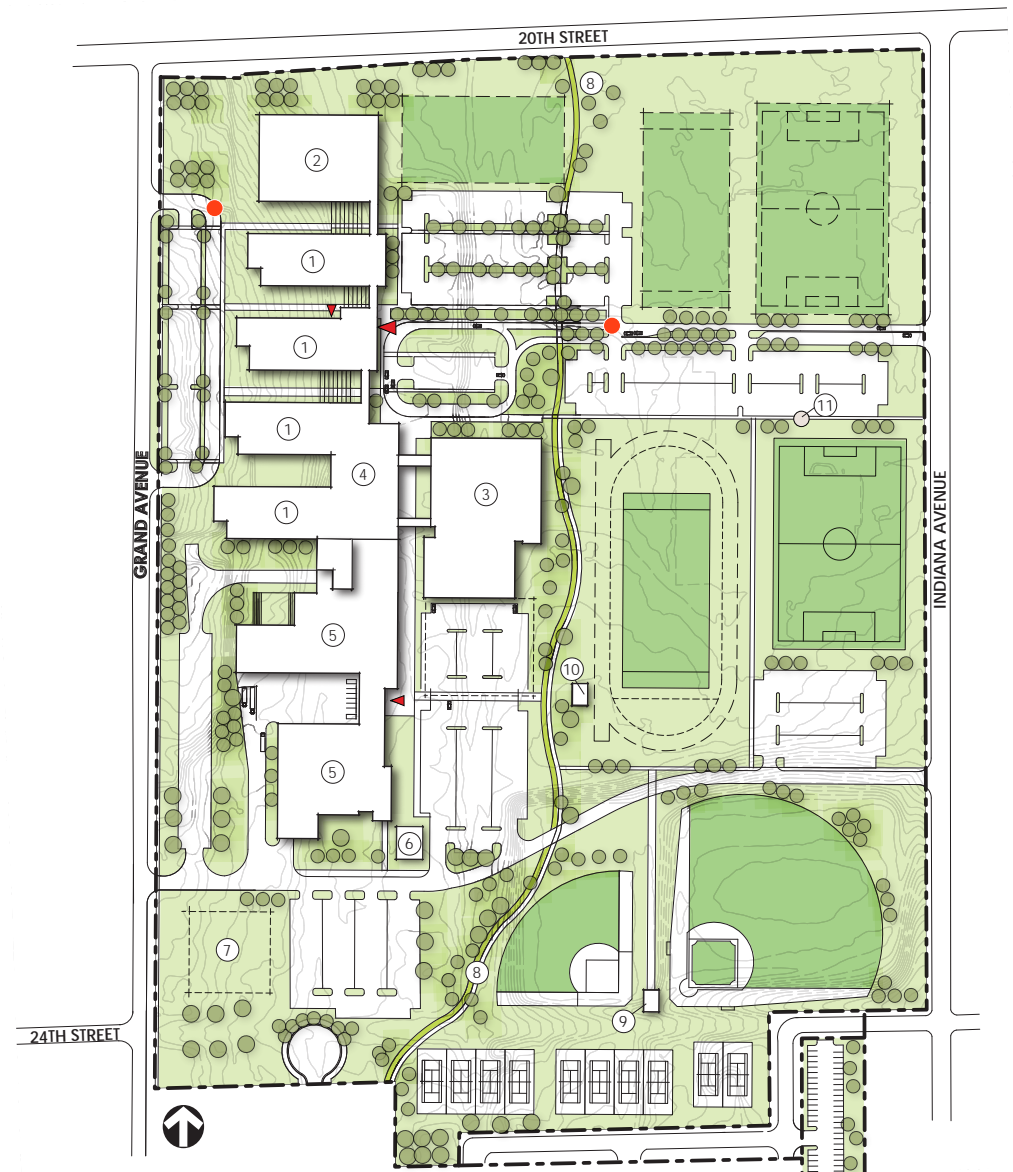
COLLABORATION + SOCIAL ZONES
DISTRIBUTION AND STACKING DIAGRAM



VIEW FROM ENTRY DRIVE

SITE PLAN LEGEND	
SMALL LEARNING COMMUNITY	1
PERFORMING ARTS	2
ATHLETICS	3
STUDENT COMMONS	4
FRANKLIN TECHNICAL CENTER	5
GREEN HOUSE	6
FUTURE EXPANSION	7
NATURAL DRAINAGE SYSTEM	8
BASEBALL / SOFTBALL PRESS BOX	9
ATHLETICS	10
MEMORIAL GARDEN	11

VIEW OF SMALL LEARNING COMMUNITIES

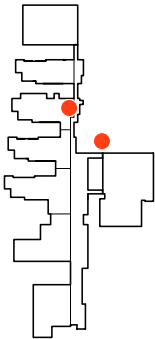


SITE PLAN

MAIN STUDENT ENTRY PLAZA



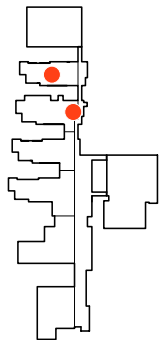
VISITOR ENTRANCE LOBBY



STUDENT LEARNING STAIR



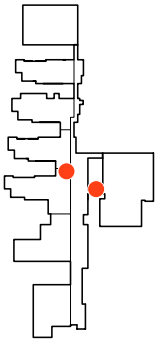
COLLABORATIVE ZONES ALONG
CIRCULATION CORRIDOR



STUDENT COMMONS COURTYARD



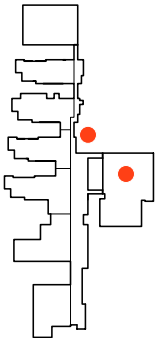
ENTREPRENEURIAL COMMONS



MAIN GYMNASIUM



ELEVATED CONNECTION TO ATHLETICS



OPEN PROJECT LAB WITH DISPLAY +
TECHNOLOGY SPACES



OUTDOOR LEARNING ENVIRONMENTS

