





Dr. Tony Lake
Superintendent of Schools

Lindbergh Schools
St. Louis, MO



Dr. Tara Sparks
Chief Academic Officer

Lindbergh Schools
St. Louis, MO



Lindbergh Schools



About Lindbergh Schools

- More than 7,600 students, grades Pre-K through 12
- 12 campuses:
 - 1 high school
 - 2 middle schools
 - 6 elementary schools
 - 1 elementary gifted education center
 - 2 early childhood education centers
- 8 National Schools of Character
- 6 National Blue Ribbon Schools of Excellence





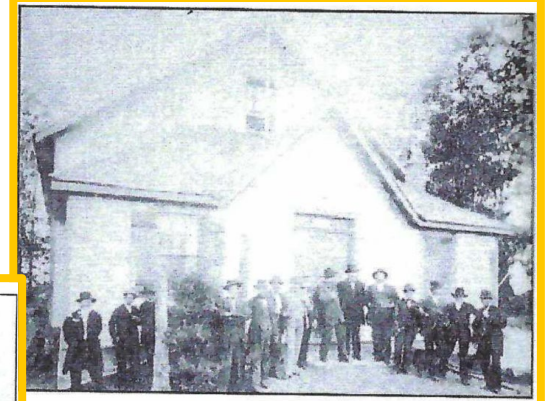
A Seed of an Idea

- Concord Farmers Club for Sale
- Cabinet and Board Conversations
- Upcoming No-Tax-Rate-Increase Bond Issue Proposition for Facility and Instructional Space Improvements

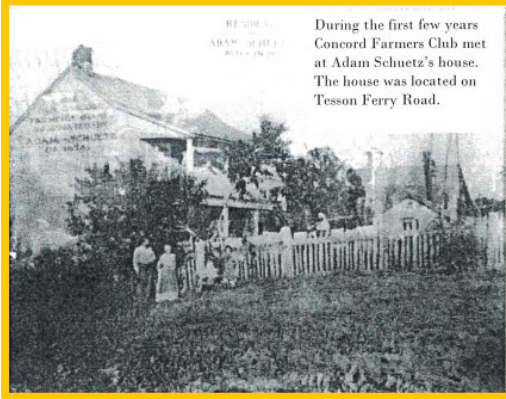


Lindbergh Schools





First building of Concord Farmers' Club.



RECORDED BY
ADAM SCHUETZ
MAY 18 1873

During the first few years
Concord Farmers Club met
at Adam Schuetz's house.
The house was located on
Tesson Ferry Road.

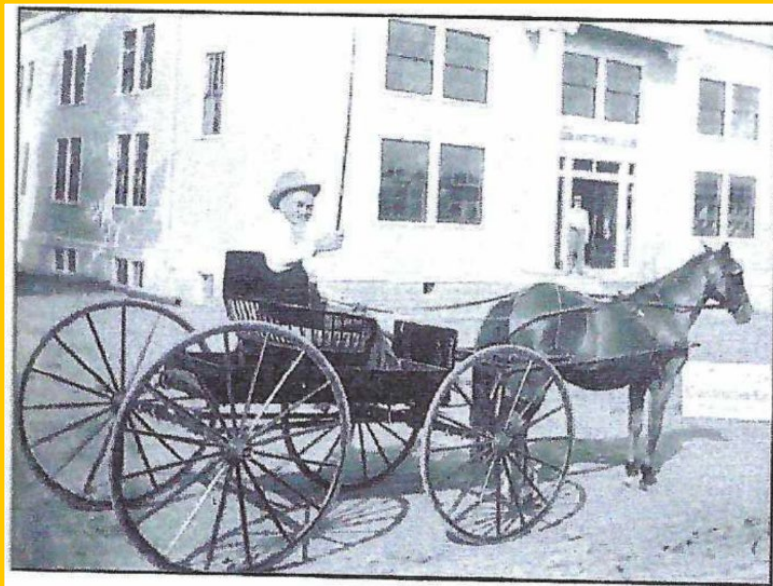


Henry Aff, Louis Heim, Henry Schaper, Christian Schroeder,
August Creceilius, Robert C. Wohlschlaeger-1908

Concord Farmers Club, Est. 1873



Concord Farmers Club, Est. 1873



1908, Adam Schuetz in front of Concord Farmers' Club.





Community Engagement

Foundation Breakfast
+ Listening and Learning
= **So Much Interest**

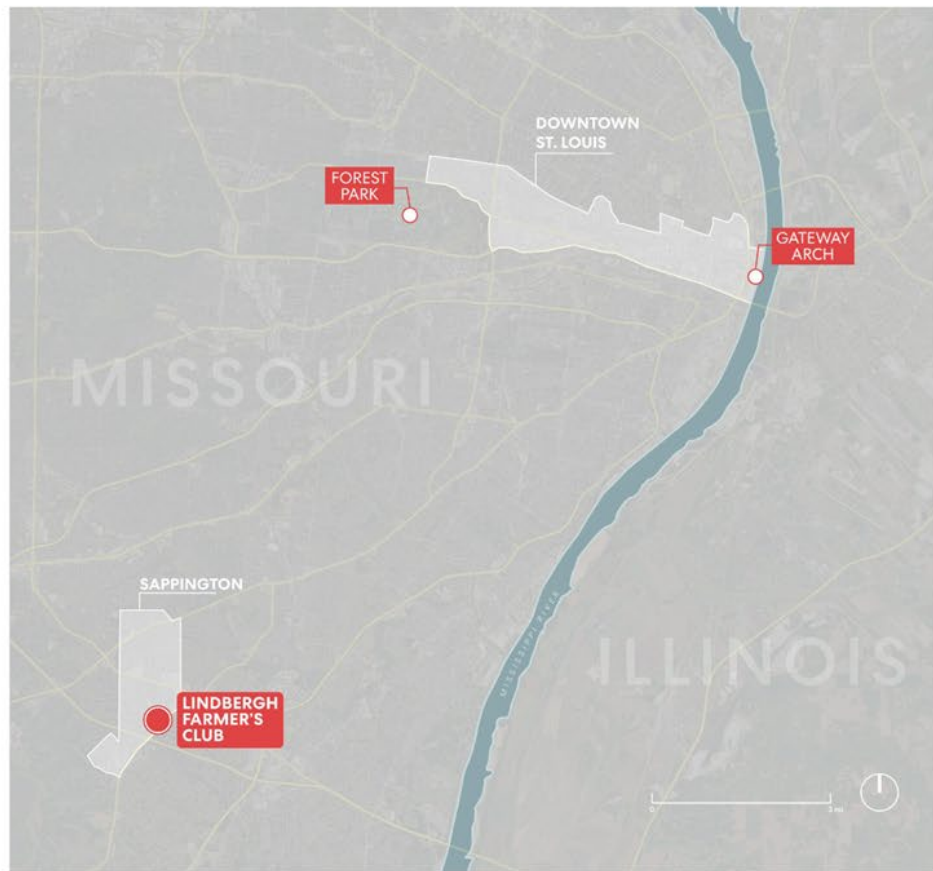


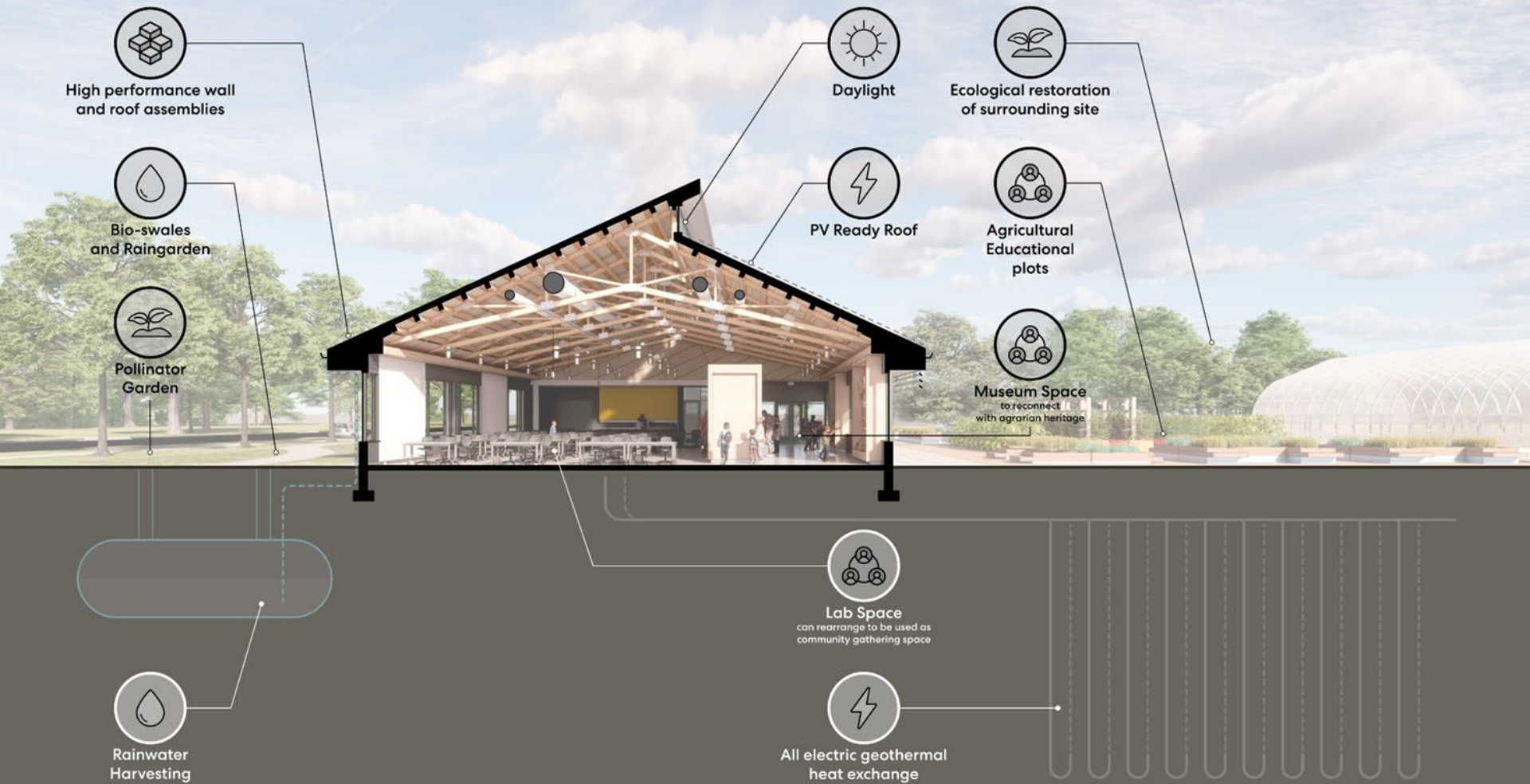
Lindbergh Schools











Partnership Opportunities

- Endowment supporting annual operations on the farm
- Human resources, skilled support
- Capital improvements to create a green building that supports student learning
- Student learning experiences
- Community partnerships



Lindbergh Schools



Lindbergh Farmers Club

Cultivating Curiosity. Growing Minds. Harvesting Potential.



-  go.lindberghschools.ws/farmersclub
-  Lindbergh Farmers Club
-  @LindberghFarmersClub

Farmers Club Sponsor Levels

Your gift to the Farmers Club will allow us to provide students of all ages with authentic, outdoor real-world learning opportunities.



LEGACY: Lifetime
\$1 million and above

PROSPERITY: 10 years*
\$250,000 – \$999,999

- Logo or name displayed on donor wall & in specific location upon request
- Quarterly newsletter updates from students
- Access to students & staff for instructional opportunities
- Tickets to Lindbergh Schools Foundation Community Breakfast
- Access to students & families to promote your organization's programs and services
- Access to farm for your organization's communication & promotional efforts



HARVEST: 5 years*
\$100,000 – \$249,999

CULTIVATOR: 5 years*
\$10,000 – \$99,999

- Logo or name displayed on donor wall
- Quarterly newsletter updates from students
- Access to students & staff for instructional opportunities
- Tickets to Lindbergh Schools Foundation Community Breakfast
- Access to students & families to promote your organization's programs and services (*Harvest* only*)
- Access to farm for your organization's communication & promotional efforts



PIONEER: 3 years*
\$500 – \$9,999

- Name displayed on donor wall
- Quarterly newsletter updates from students



**With first right of refusal for renewal*



Developing the Experiences

- Programmatic Design: January 2023
- Prop R: April 2024
- Visioning Session - Why: April 2024
- Visioning Session - Experiences: June 2024
- Place-Based Learning Experiences: Sept. 2024
- Schematic Design: October 2024
- Building design: January 2025
- Hire Onsite Educator and Farm Manager: Spring 2026
- Building Completion and Soft Opening: January 2027
- Grand Opening: Fall 2027

CMAR: **BSI**

Architect: **Perkins & Will**



Lindbergh Schools



Original Mission:

“The object shall be mutual benevolence and the improvement of its members in everything pertaining to agriculture, horticulture, and domestic economy.”

Constitution Article 2
Concord Farmers Club
of Carondelet Township
St. Louis County, Missouri
July 14, 1883

Our Vision:

“Inspiring students through sustainable agriculture, environmental stewardship, and community connections.”

Lindbergh Farmers Club
St. Louis County, Missouri
April 25, 2024





Welcome to the Farm!

Our Focus: Outdoor, hands-in-the-dirt learning experiences that cannot be found in the classroom

Our Learning Spaces: Outdoor growing spaces, a greenhouse, and a covered pavilion to support outdoor learning and gathering. Flexible lab spaces, a kitchen and a student-managed store.

A Living Building on a Working Farm: The building and site design are deeply considerate of ecology and sustainability.





Place-Based Learning



Agriculture

Kindergarten: Life Cycles with hatching chickens and harvesting seeds



AgTech

Tech and Engineering: Integration of Geographic Information Systems (GIS) and drone technology



Sustainability

Fourth Grade: Green energy analyzing building and design



Entrepreneurship

Business and Marketing: Student-run market and event planning



Humanities

7th Grade: Farmers Club
Genealogy





A Typical Day on the Farm

- **3rd graders** are installing the native plants garden they designed at school with a conservationist from the Missouri Botanical Garden.
- **6th graders** are curating a museum of the history of the community and the Farmers Club
- **High school students** are running a harvest market, conducting plant science research, and inspecting the precision farming system they installed last Spring.













Additional Features

Pollinator
Gardens



Outdoor
Classroom

Sustainable
Designs &
Practices

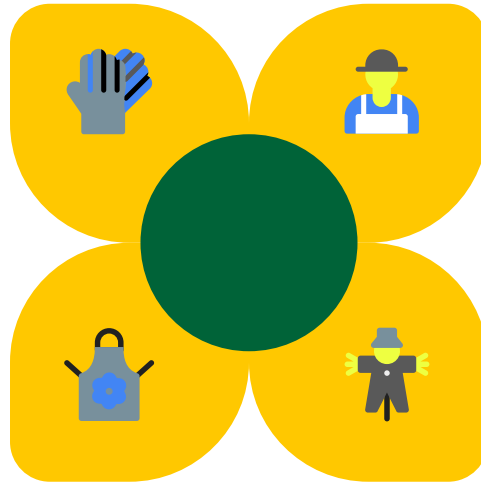


Native
Plantings



Four Corners Discussion

What place-based learning experiences do you guarantee?



How do you design for real-world learning experiences?

What work force opportunities exist in your community?

How do you think differently about learning spaces and facilities for authentic use?

