

# Leveraging History and Tradition to Design the School of Tomorrow

# Learning Objectives

## 1. **Community Based Vision**

Appreciate the value of a robust stakeholder engagement process in establishing a community-based vision. Learn how the engagement process for the New Frank Cody High School built trust and transparency with the community in support of the school district's Facilities Master Plan.

## 2. **Authenticity and Adaptability**

Recognize the importance of responding to challenges in the engagement process with authenticity and transparency. Learn how to structure an engagement process that is adaptable to a variety of stakeholder groups.

## 3. **Honor Tradition**

Understand the importance of preserving a school's legacy and tradition while meeting the needs of tomorrow's learners.

## 4. **Future-Focused**

Explore the principles of future-ready learning environments and how to convey these concepts as well as the school district's vision to the community as part of the engagement process.

# Introductions

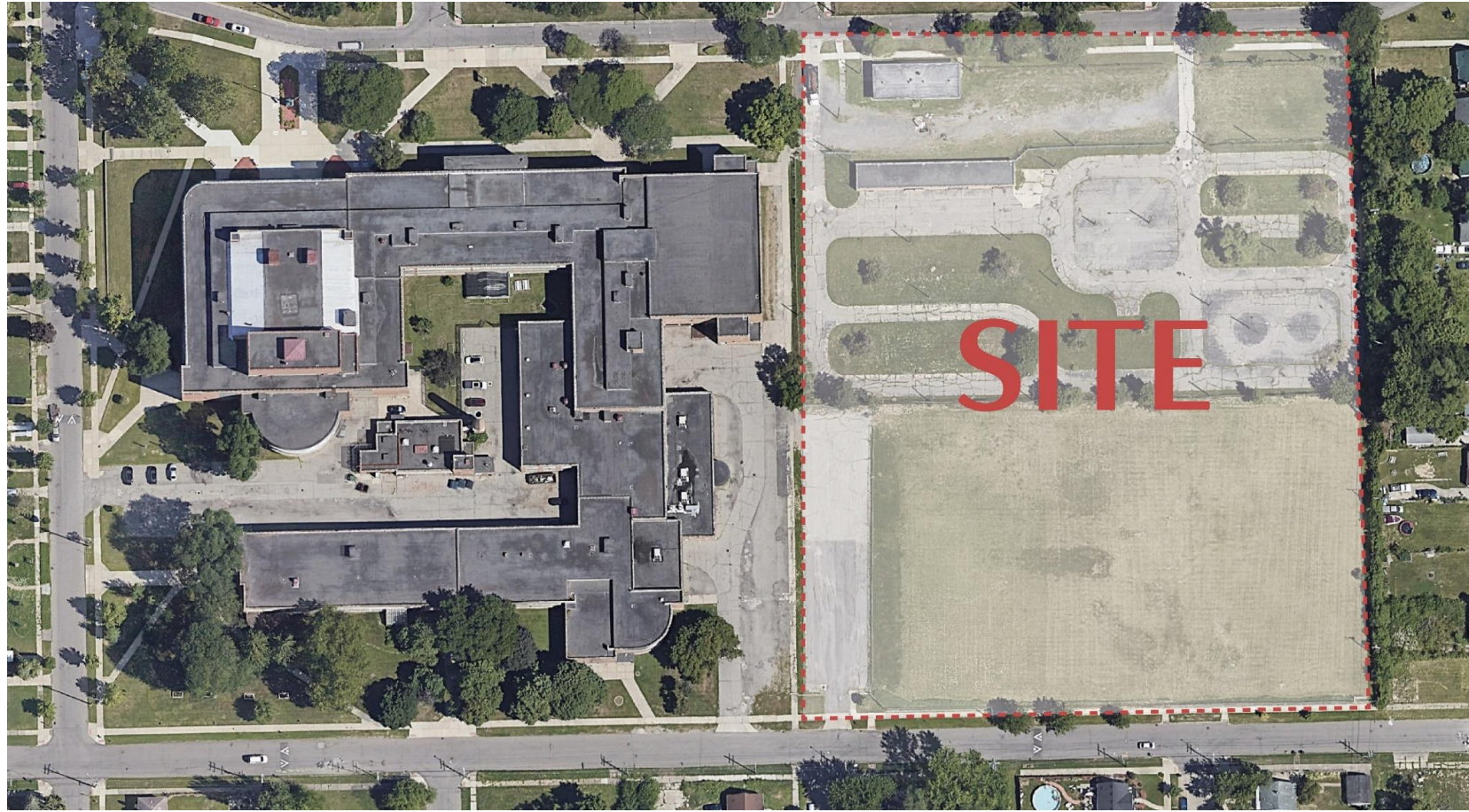


**Karen Danko, AIA, NCARB**  
Associate Principal, Project Manager  
*Moody Nolan*



**Debra Kolesar, NCIDQ**  
Senior Associate, Interior Designer  
*Moody Nolan*

# Project Context



Set within one of Detroit's largest postwar residential neighborhoods, the new Frank Cody High School replaces an aging 1950s facility with a modern learning environment that enriches student engagement and strengthens connection



The school is named to honor former Detroit Public Schools superintendent Frank Cody.

# Visioning and Community Engagement Tools



## WANTS & NEEDS

1. What does your Community need more of?

Local/healthy food

Recycling bins

2. What is missing from your Community/Neighborhood?

jobs, housing, Pride

homeowners

3. What could make life in your Community more enjoyable?

Shared goals of improving & maintaining development

## WANTS & NEEDS

1. What does your Community need more of?

Bike/pedestrian-friendly

spaces, art spaces, active communa

2. What is missing from your Community/Neighborhood?

Safe, family-friendly spaces

gardens

3. What could make life in your Community more enjoyable?

Parks/non-commercial community space

## WANTS & NEEDS

1. What does your Community need more of?

employment opportunities

long-term investment & good property owners including landlords

2. What is missing from your Community/Neighborhood?

affordable retail/commercial

3. What could make life in your Community more enjoyable?

litter management  
traffic enforcement/bike + ped safety

## WANTS & NEEDS

1. What does your Community need more of?

Regular community-wide gatherings, investment in empty buildings

2. What is missing from your Community/Neighborhood?

Holiday traditions, new perspectives

3. What could make life in your Community more enjoyable?

Quality of Life police enforcement (noise & litter)

## VISUAL LISTENING ACTIVITY - 30 MIN BOARD 2

### PUBLIC SPACE

Lounge, Collaborative Stairs, Waiting Area, Cafe, Huddle, Etc.



# Visioning and Community Engagement

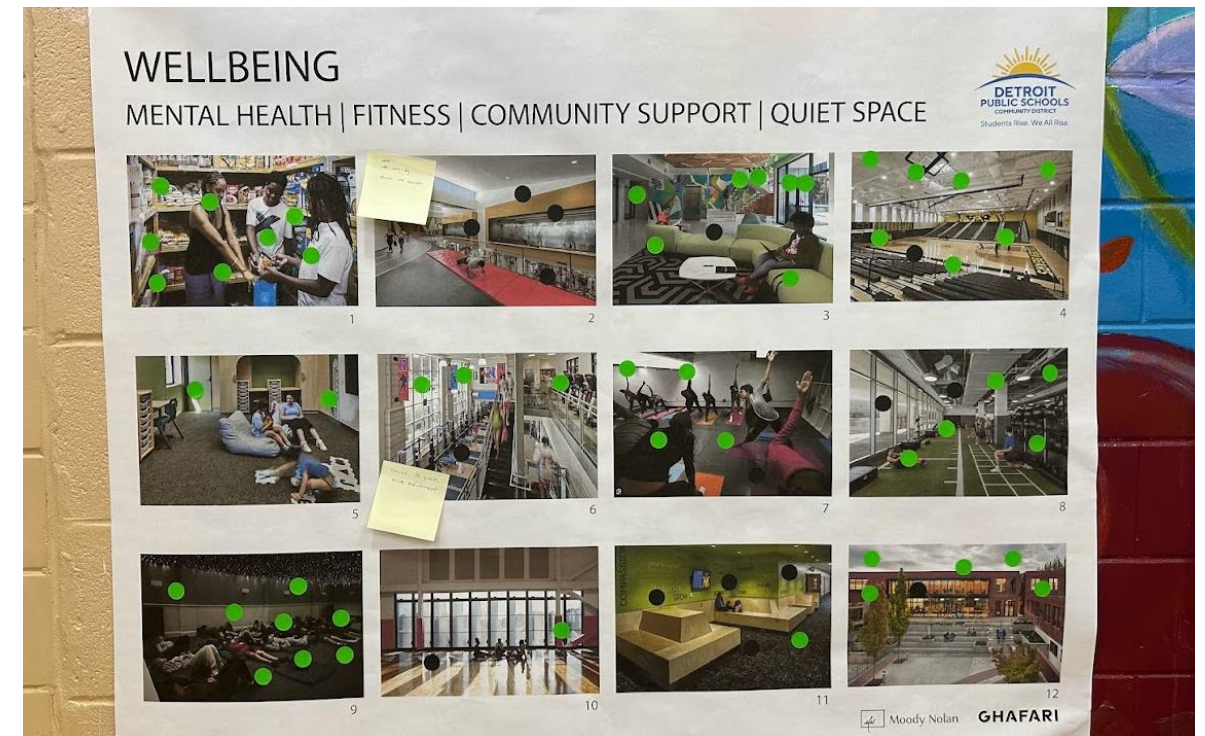
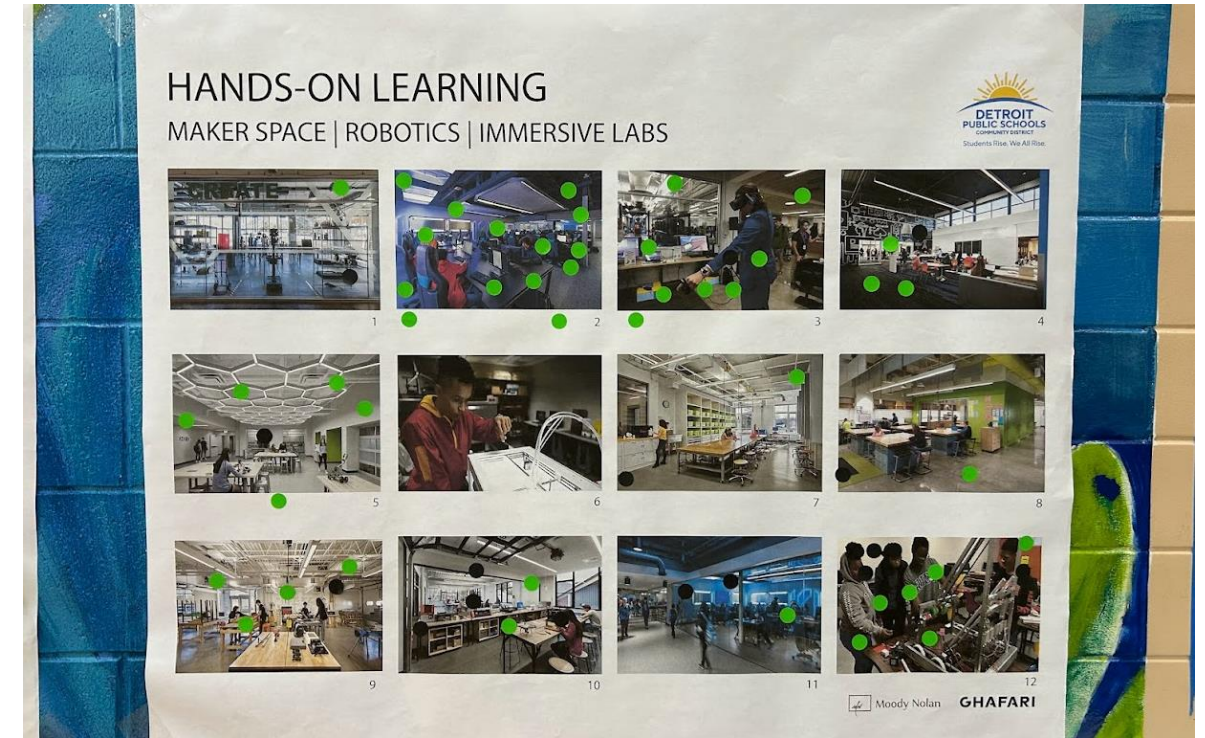
## Process

- Define stakeholder groups
  - Who will be engaged?
  - Input vs. Information
- Define engagement activities
  - How much time is available?
  - What activity best supports the desired outcome?
- Incorporate Feedback
  - Share what we heard
  - Show how we responded

# Student Engagement

March 2024

- Activities
  - Key Questions Activity – Word Cloud
  - Visual Listening
- Lessons Learned
  - Technology
  - Room configuration

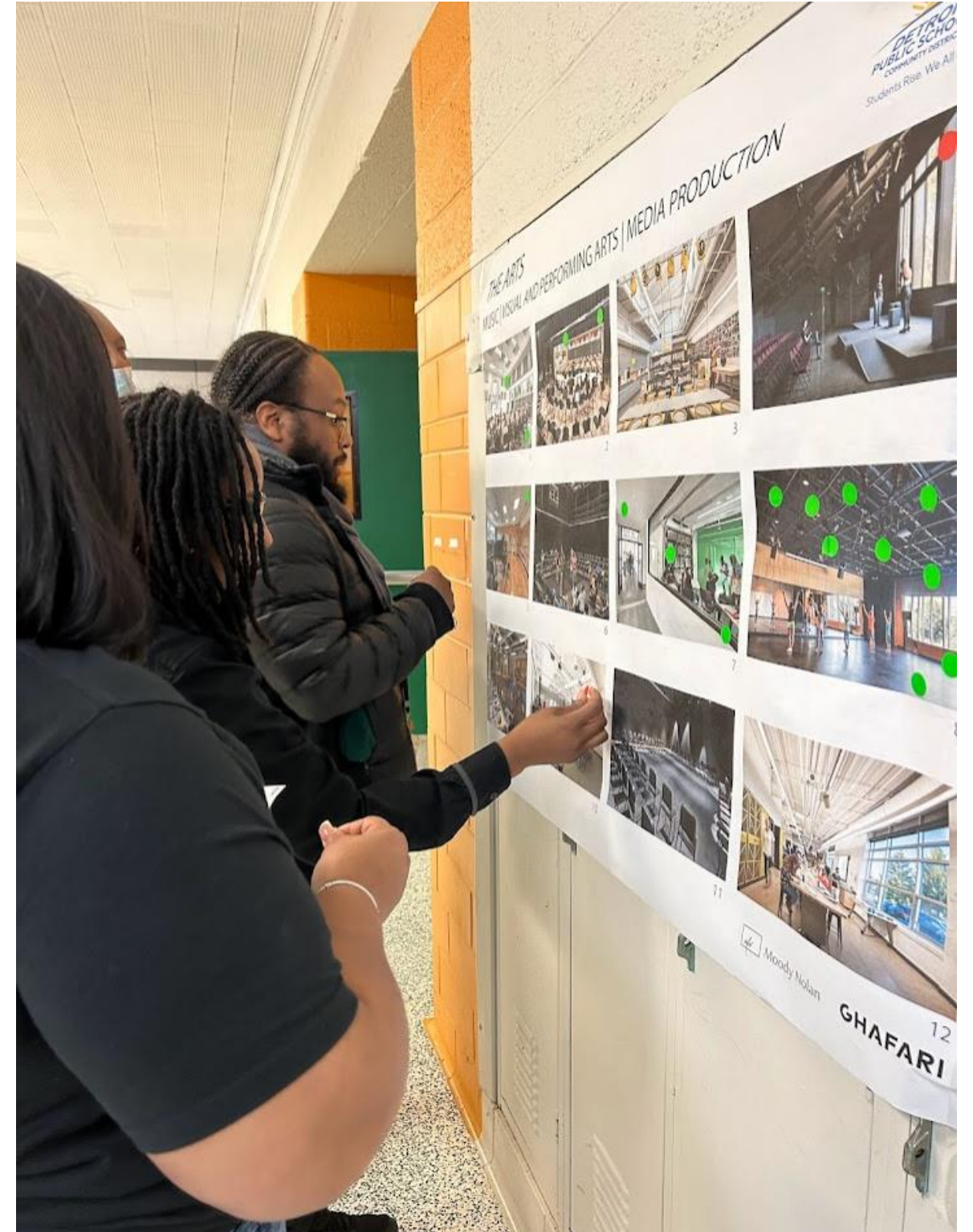




# Staff Engagement

March 2024

- Activities
  - Visual Listening
- Lessons Learned
  - Adapting to time constraints



# Community Engagement

March 2024

- Activities
  - Key Question
  - Future-Ready Schools Presentation
  - Visual Listening
- Lessons Learned
  - Adapting activities to the audience
  - Asking a single question can yield great results

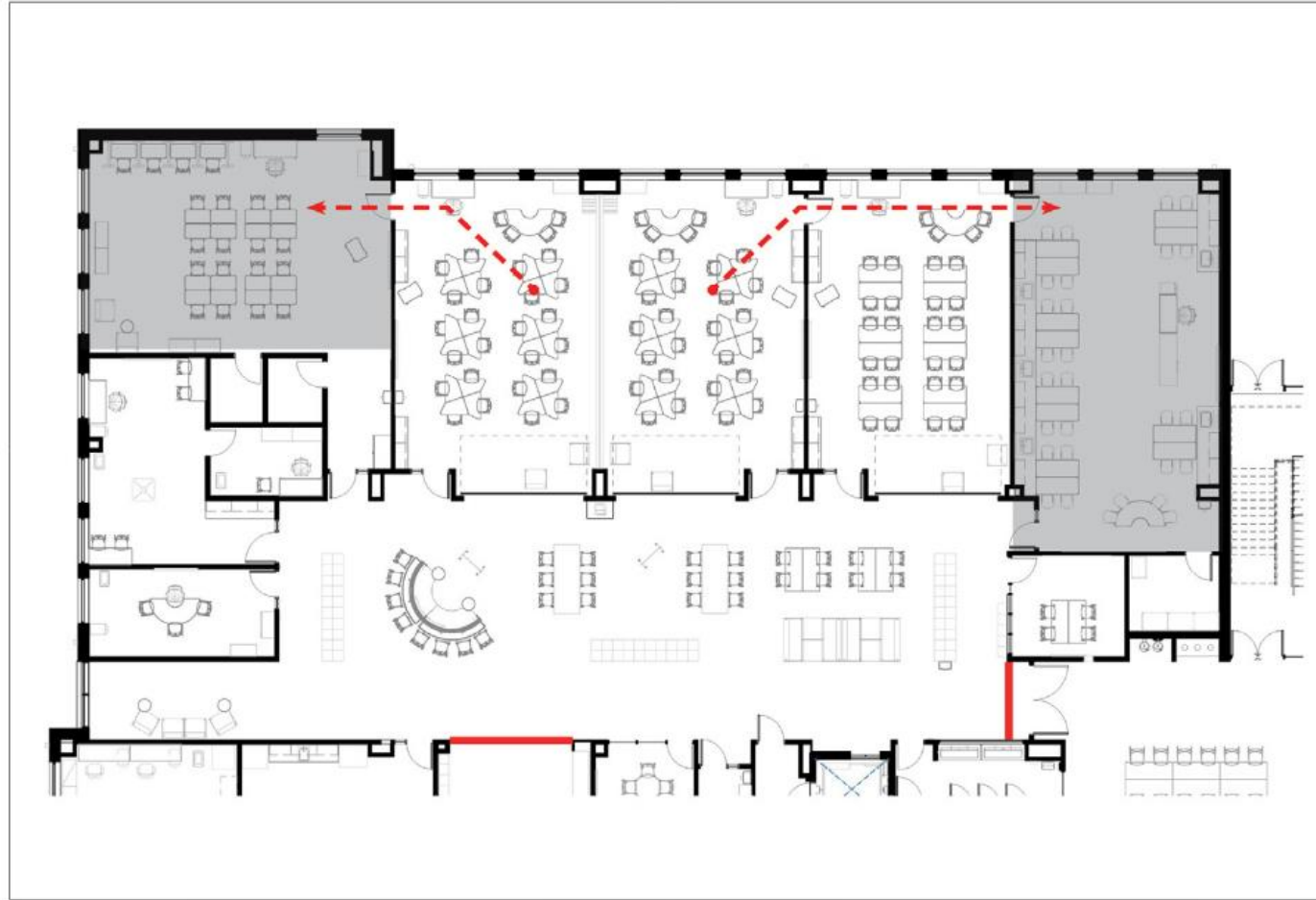
# Teaching for the Future

## **Jobs in 2030**

1. Organ Creator
2. Augmented-Reality Journey Builder
3. Metaverse Planner
4. Biofilm Installer
5. Rewilder

LinkedIn, *15 Jobs You'll Be Recruiting for in 2030*

# Future-Ready Schools



Passive Security | Safety Zones

## Amplify Safety

Designing with safety in mind can reduce stress for both students and teachers, creating a more comfortable environment for learning.



Good Sightlines & Transparency

# Future-Ready Schools

## Optimize Future Ready Spaces

Flexible spaces that support diverse teaching and learning styles foster inclusivity, self-regulation, and stronger student engagement.



Flexible Classrooms



Mobile STEM & Robotics Commons

# Future-Ready Schools



Neighborhood Connections



## Support Community Connections

When schools offer services like after-school programs, healthcare, and community events, they have a positive impact beyond academics.



Wraparound Services

# Future-Ready Schools

## Nurture Wellbeing

Incorporating wellness rooms, spaces for reflection, and biophilic elements results in restorative environments where both learners and educators can thrive



Spaces to support the whole student



Outdoor learning

# Future-Ready Schools

## Sustainable & Nurturing Spaces

Healthy environments support healthy students, may reduce operational costs, and promote environmental stewardship.



Sustainable Features



Natural Light

# Community Engagement

September 2024

- Activities
  - Visioning Sessions Recap
  - Exterior Design Concepts & Materials
  - Interior Visioning Concepts
- Lessons Learned
  - Building trust through transparency
  - Understanding school history through alumni engagement

# Community Engagement

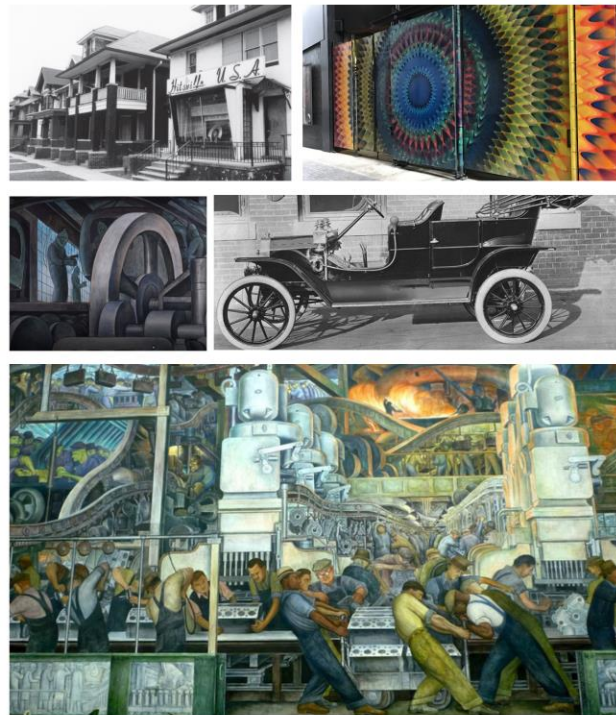
## September 2024



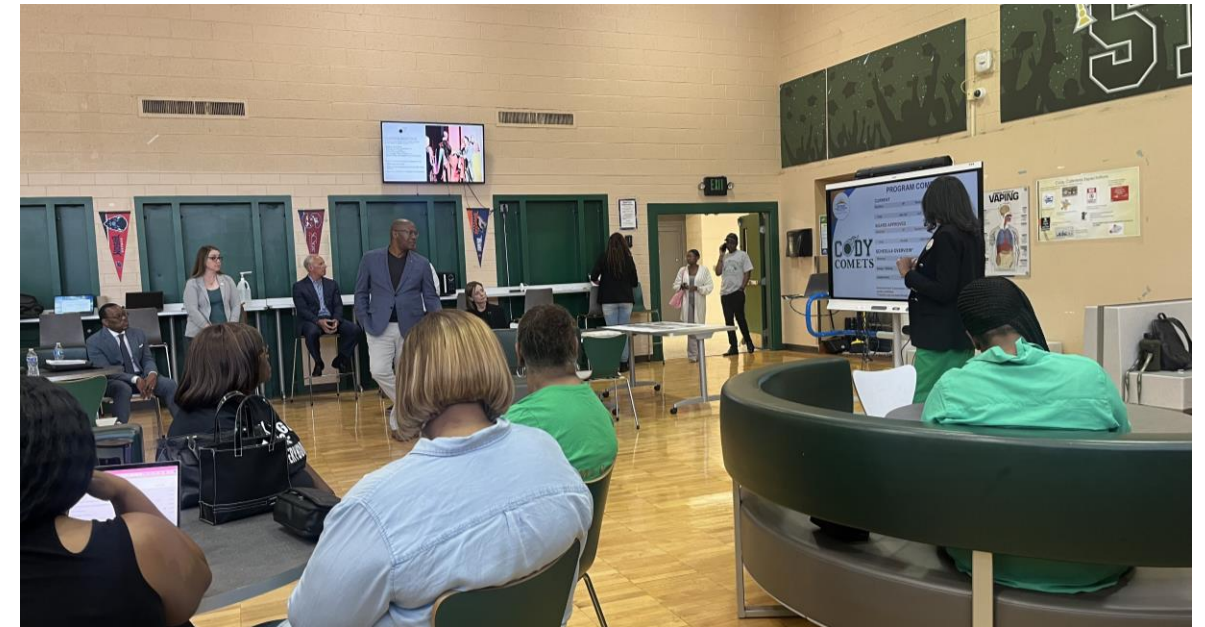
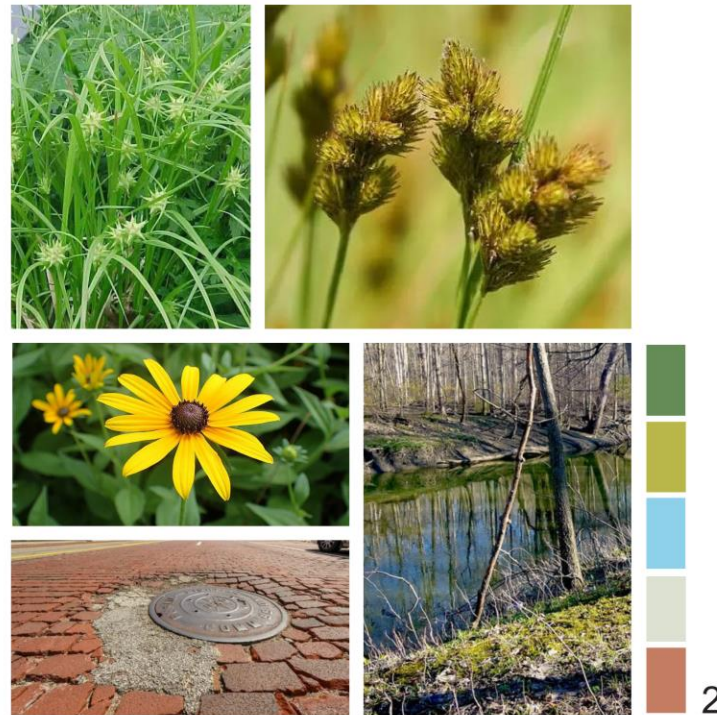
### Interior Visioning Concepts

#### Color Palette Inspirations

Concept 1: Art & Industry



Concept 2: Neighborhood Ecology



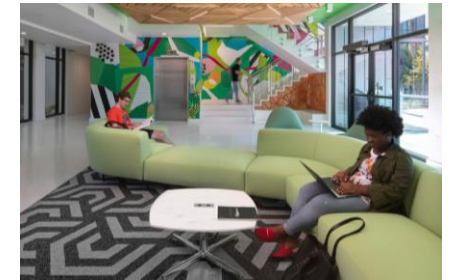
# Precedent Images & Design Drivers

We previously asked:

**What would you like to see offered for a future student at Cody High School?**

Key takeaways:

1. A facility that is welcoming and inviting
2. Flexible learning environments
3. Calming interior spaces
4. Connection to outdoors / usable outdoor space
5. Access to support services and health & wellbeing resources
6. Upgraded athletic facilities



# Student & Staff Engagement

November 2024

- Activities
  - Interior Visioning Concepts
  - Areas of Emphasis (interior spaces)
- Lessons Learned
  - Reconciling input from different stakeholder groups

# Student & Staff Engagement

## November 2024



### Areas of Emphasis Academic Areas



**BE LEGENDARY  
AT CODY**



Love the sitting area

PLEASE NOTE: IMAGES SHOWN ARE CONCEPTUAL IN NATURE AND MAY CHANGE

GHAFARI Moody Nolan



This could say "CODY" overstimulating, confusing!

I like this one.

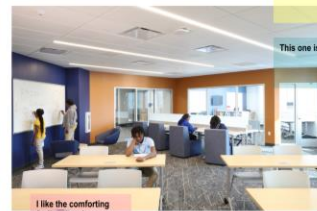
This one is good.



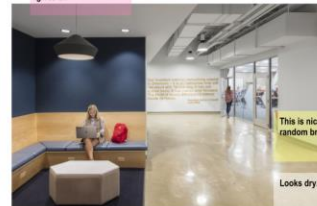
I love this because students are able to chill while studying!  
I like the lounge center so that would be useful!



FEELS LIKE COLLEGE! Really like the open feeling  
Too many windows



I like the comforting feeling that the space gives off



This is nice. I love the random breakout room.  
Looks dry. No fun to it!



Students have no space!

DPSCD FMP 5 - New Cody High School | Student & Staff Engagement | 11.06.2024

Student Input



### Areas of Emphasis Academic Areas



**BE LEGENDARY  
AT CODY**



PLEASE NOTE: IMAGES SHOWN ARE CONCEPTUAL IN NATURE AND MAY CHANGE

GHAFARI Moody Nolan



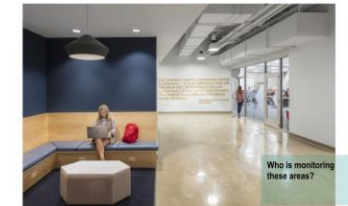
Nice



Decorative shade would be nice. Love the windows.  
Love the windows. Egress or escape window.



Like the board (x2)  
Nice room



Who is monitoring these areas?



DPSCD FMP 5 - New Cody High School | Student & Staff Engagement | 11.06.2024

Staff Input

# Community Engagement

April 2025

- Activities
  - Stakeholder Engagement Summary
  - Design Updates
  - Construction Team Update
  - Q&A / Community Feedback
- Lessons Learned
  - Handling tough conversations and challenging questions with authenticity

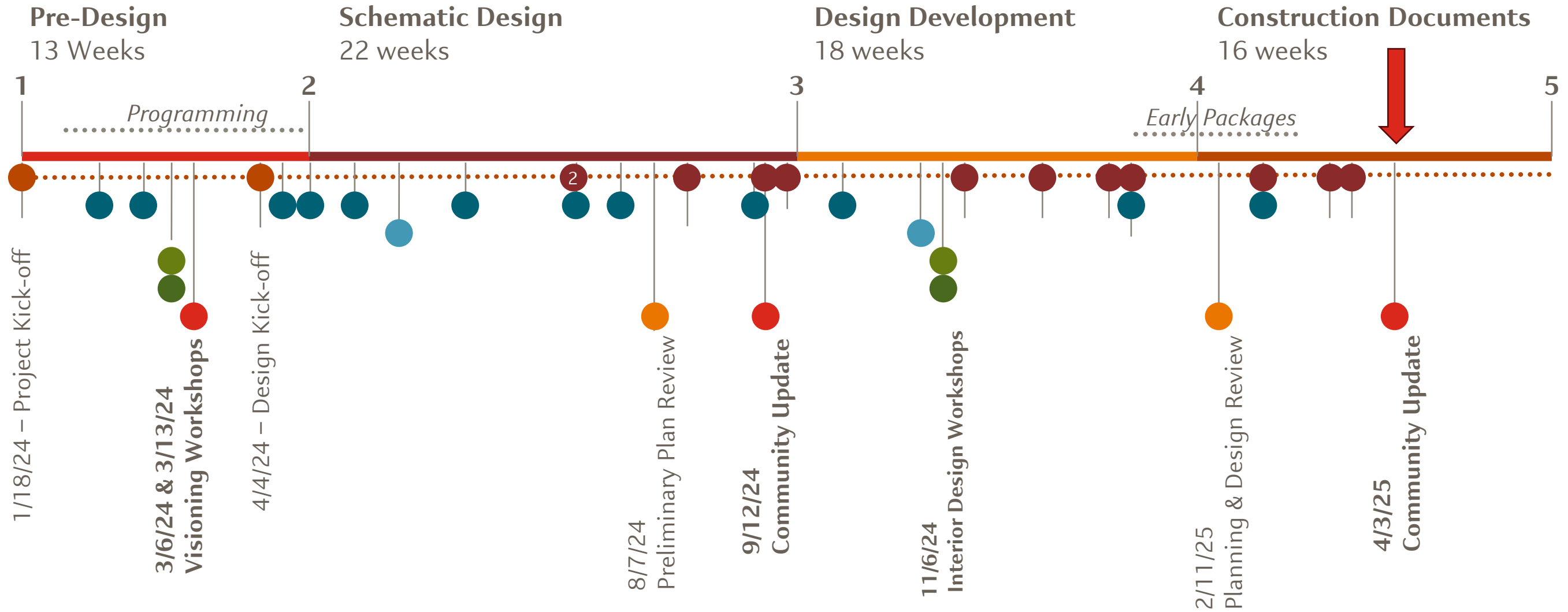
# Student Engagement

October 2025

- Activities
  - Design Updates
  - Graphics / Branding
- Lessons Learned
  - Informal “drop-in” format allowed for broader student participation



# Stakeholder Engagement



## Stakeholder Group Meetings

- Community - 3
- Central Office Staff - 12
- City of Detroit - 2
- Capital Team - weekly
- User Groups - 2 (staff)
- Design Ambassadors - 12 (small group: Principal & staff)
- Students - 2
- Staff - 2

# Frank Cody High School

**A modern learning environment shaped by movement, light, and connection to the natural world.**

Set within one of Detroit's largest postwar residential neighborhoods, the new Frank Cody High School replaces an aging 1950s facility with a modern learning environment that enriches student engagement and strengthens their connection to the natural world.

A prominent north-south circulation spine guides movement through the building, establishing a natural progression from the main entrance to the central courtyard and into the dining commons. Classrooms and social spaces surround this light-filled courtyard, offering easy indoor-outdoor connections.

A mix of modern and traditional materials, reflecting the school's colors, creates a warm and cohesive identity inside and out.



# Project Statistics

**Number of Students:** 700-750

**Number of Staff:** 80-85 (forecasted)

**Total Classrooms:** 29

General Classrooms – 16

ESE Classrooms - 6

Science / Robotics / Computer Science – 5

Visual Art – 1

Instrumental Music – 1

## **Special Facilities:**

Multi-Purpose Performance Space

Career-Technical Pathways (Personal Training/Fitness & Business/Marketing)

JROTC

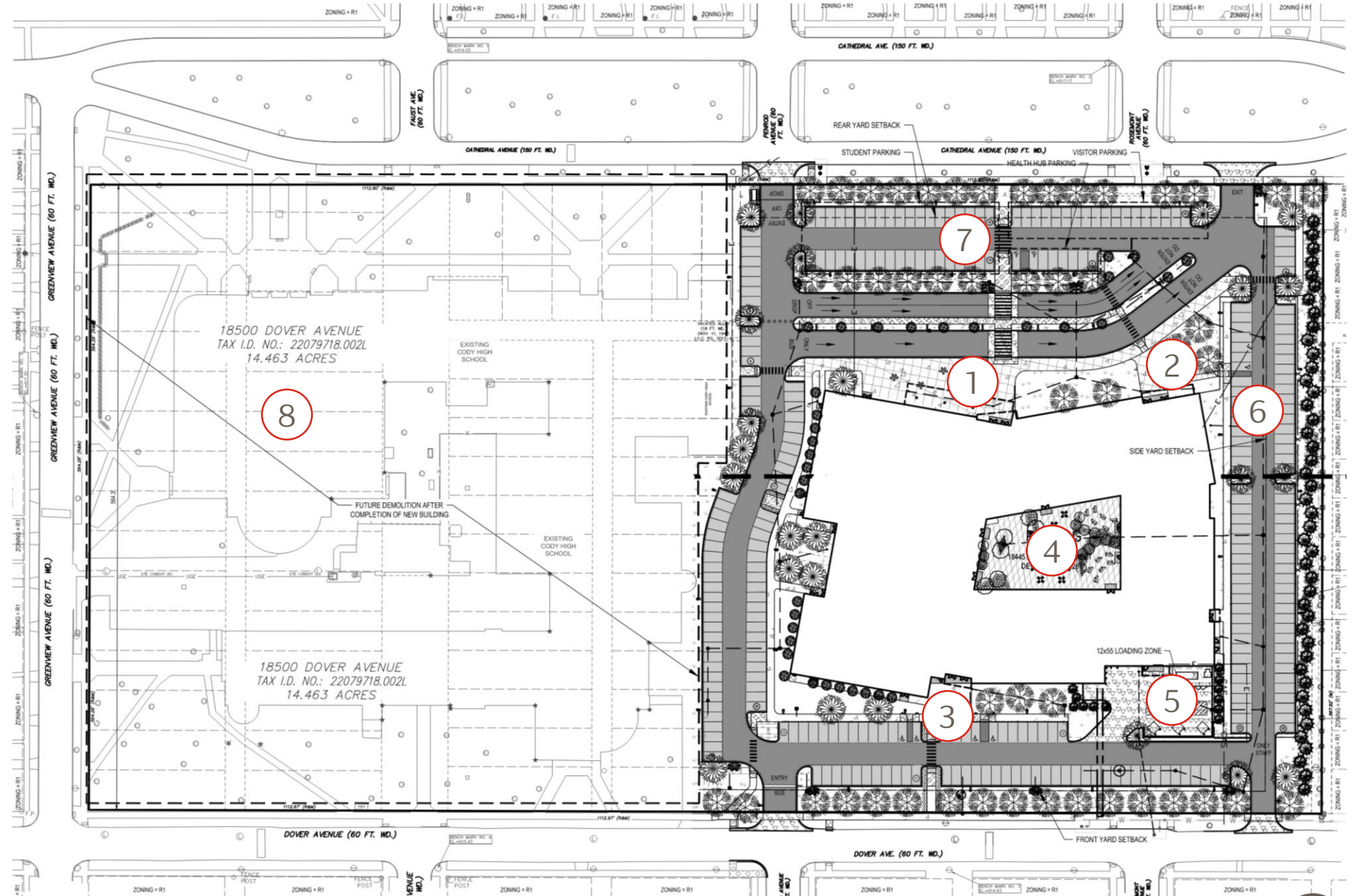
School-Based Health Center

Sensory Room

**Building SF:** 128,000 GSF (building + health center)

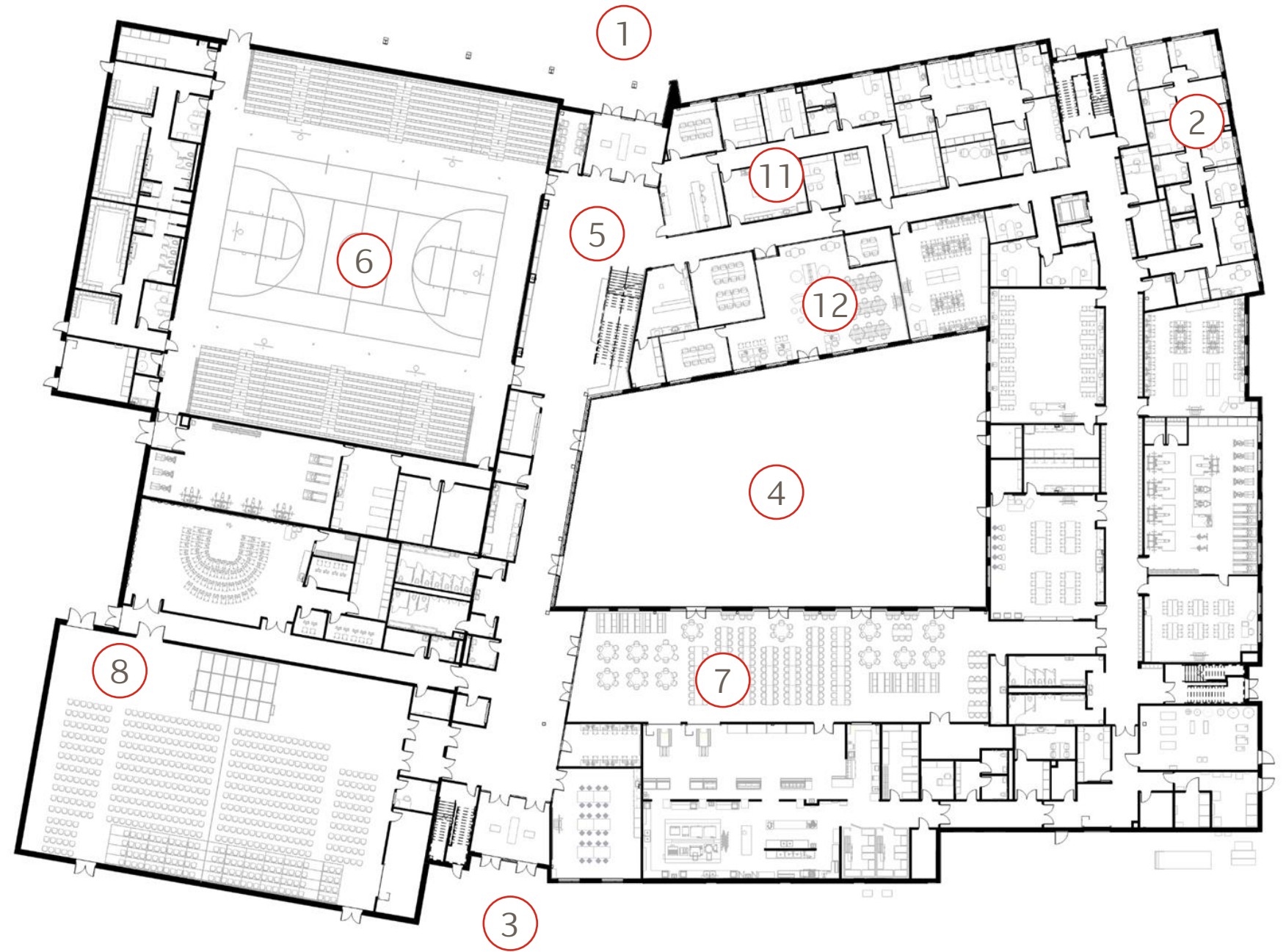
# Site Plan

1. Main Entry
2. School-Based Health Center
3. Event Entry
4. Central Courtyard
5. Service / Loading
6. Staff Parking
7. Student & Visitor Parking
8. Existing Cody



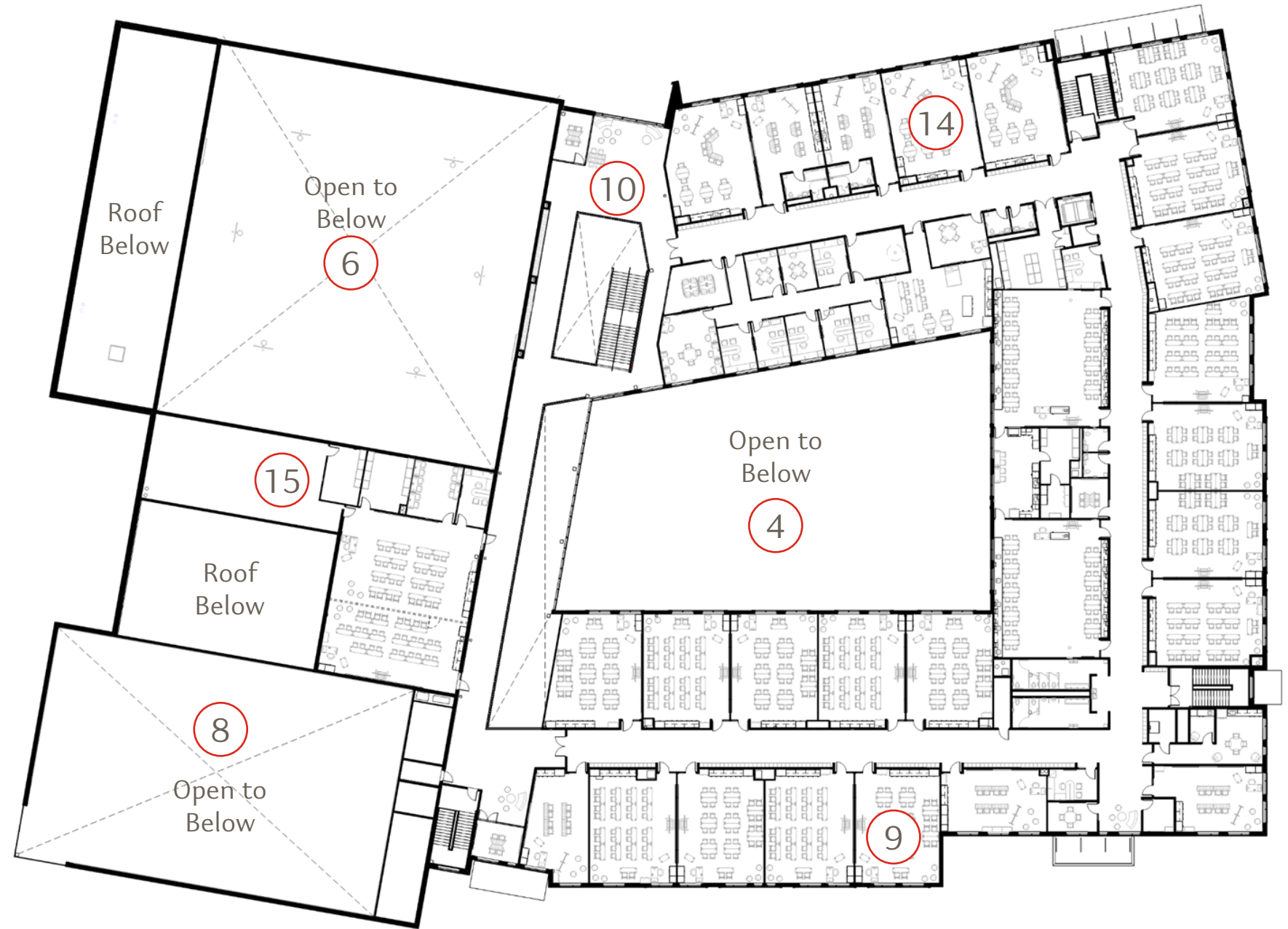
# First Floor Plan

1. Main Entry
2. School-Based Health Center
3. Event Entry
4. Central Courtyard
5. Main Lobby
6. Gymnasium
7. Student Dining
8. Multi-Purpose Performance
9. General Classroom
10. Collaboration Space
11. Administration
12. Tutoring / Partnership Programs
13. CTE Programs
14. ESE Classrooms
15. JROTC Program



# Second Floor Plan

1. Main Entry
2. School-Based Health Center
3. Event Entry
4. Central Courtyard
5. Main Lobby
6. Gymnasium
7. Student Dining
8. Multi-Purpose Performance
9. General Classroom
10. Collaboration Space
11. Administration
12. Tutoring / Partnership Programs
13. CTE Programs
14. ESE Classrooms
15. JROTC Program



**\*Please Note:** Renderings and materials are conceptual design samples of the new building. Final Designs are subject to change.\*

# Exterior Development

## 1 - Main Entry



**GHAFARI**



Moody Nolan

**\*Please Note:** Renderings and materials are conceptual design samples of the new building. Final Designs are subject to change.\*

**\*Please Note:** Renderings and materials are conceptual design samples of the new building. Final Designs are subject to change.\*

# Exterior Development 4 - Central Courtyard



**GHAFARI**



Moody Nolan

**\*Please Note:** Renderings and materials are conceptual design samples of the new building. Final Designs are subject to change.\*

# Exterior Development

## 4 - Central Courtyard

Designed as a shared gathering place, this open-air space includes outdoor classroom space, shaded seating areas, and native plantings



# Interior Development

## 5 - Main Lobby



# Interior Development 9 - General Classroom



**GHAFARI**



Moody Nolan

# Interior Development

## 10 - Collaboration Spaces



*Flexible spaces support diverse teaching and learning styles, and provide more opportunities for collaboration*



# Learning Objectives

## 1. **Community Based Vision**

Appreciate the value of a robust stakeholder engagement process in establishing a community-based vision. Learn how the engagement process for the New Frank Cody High School built trust and transparency with the community in support of the school district's Facilities Master Plan.

## 2. **Authenticity and Adaptability**

Recognize the importance of responding to challenges in the engagement process with authenticity and transparency. Learn how to structure an engagement process that is adaptable to a variety of stakeholder groups.

## 3. **Honor Tradition**

Understand the importance of preserving a school's legacy and tradition while meeting the needs of tomorrow's learners.

## 4. **Future-Focused**

Explore the principles of future-ready learning environments and how to convey these concepts as well as the school district's vision to the community as part of the engagement process.

# Thank You!

---



© 2026 Moody Nolan. All rights reserved.  
Images used under license, except where noted.