



A4LE Midwest Great Lakes

Reimagining the High School Learning Community through Collaboration & Purposeful Design

PARK HILL SCHOOL DISTRICT
LEAD
Innovation Studio
Lead. Empower. Aspire. Dream.

hollis **+** miller
architects

MEET YOUR SPEAKERS



Megan Lee | Student
LEAD Innovation Studio



Melanie Farber | Facilitator
LEAD Innovation Studio



Dr. Ryan Stanley | Principal
LEAD Innovation Studio



**Ryan Walters | Partner,
Studio Leader**
Hollis + Miller Architects



LEARNING OBJECTIVES

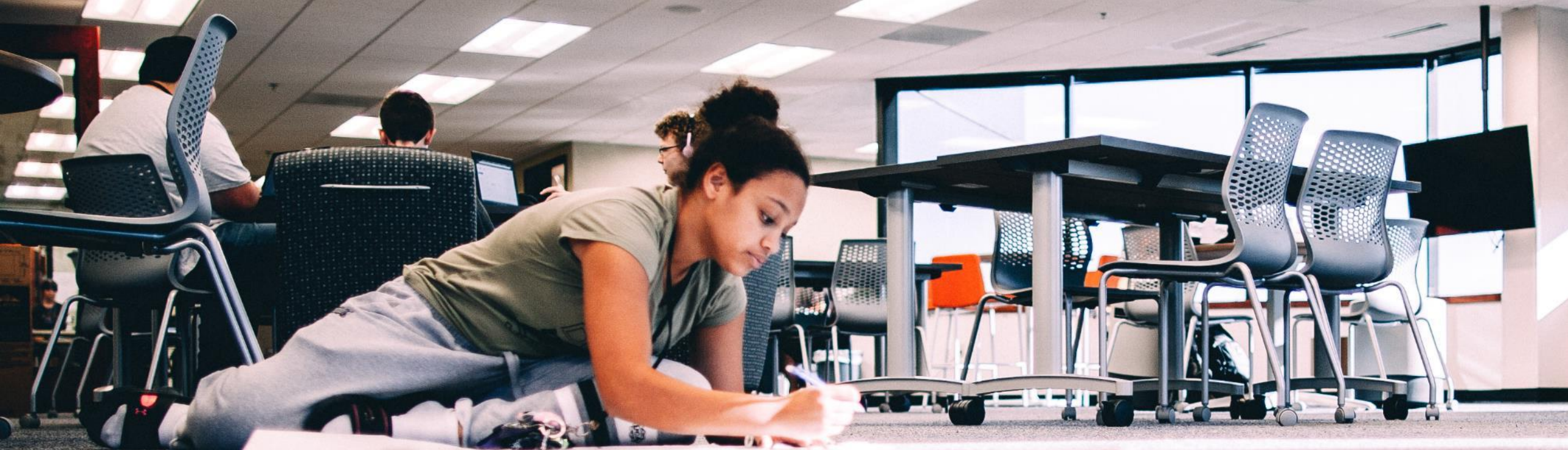
- Learn how a professional, collaborative learning community can change the lived experience for students to better prepare them to positively impact an ever-evolving world.
- Learn how a collaborative and iterative design process supports the alignment and execution of a design reflecting the educational vision. Learn how the integrated team created and experimented together and how those efforts resulted in key design features in the new facility.
- Learn from students how they experience and interact with the physical space of the building and how it impacts their daily experience.
- Learn from teachers (learning facilitators) how they experience and interact with the physical space of the building and how it impacts their daily experience.



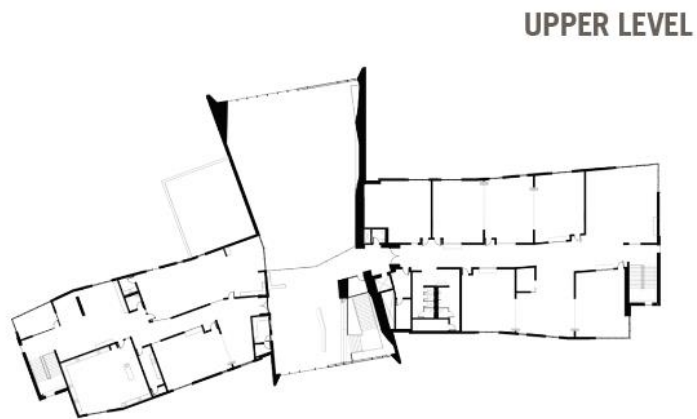
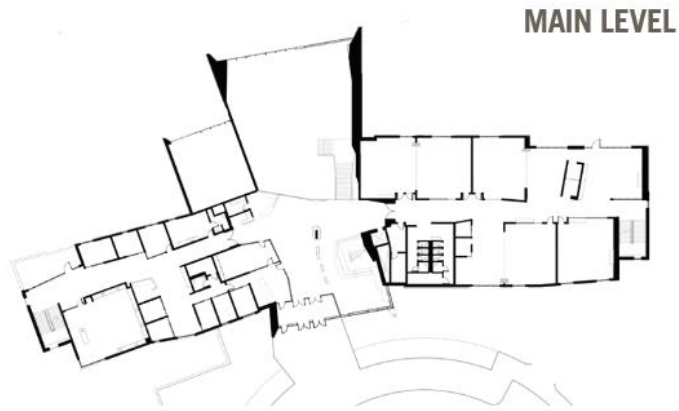
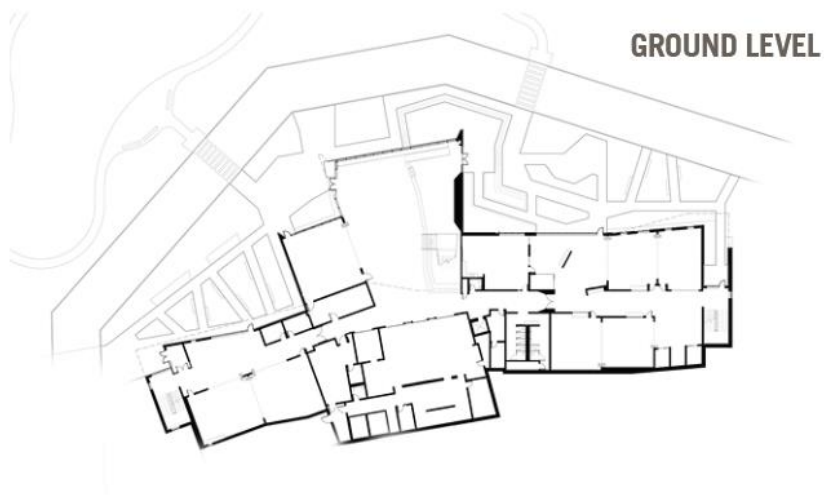
TODAY'S AGENDA

LEAD Genesis + Creation

Unique LEAD Experience:
Faculty + Student Perspective



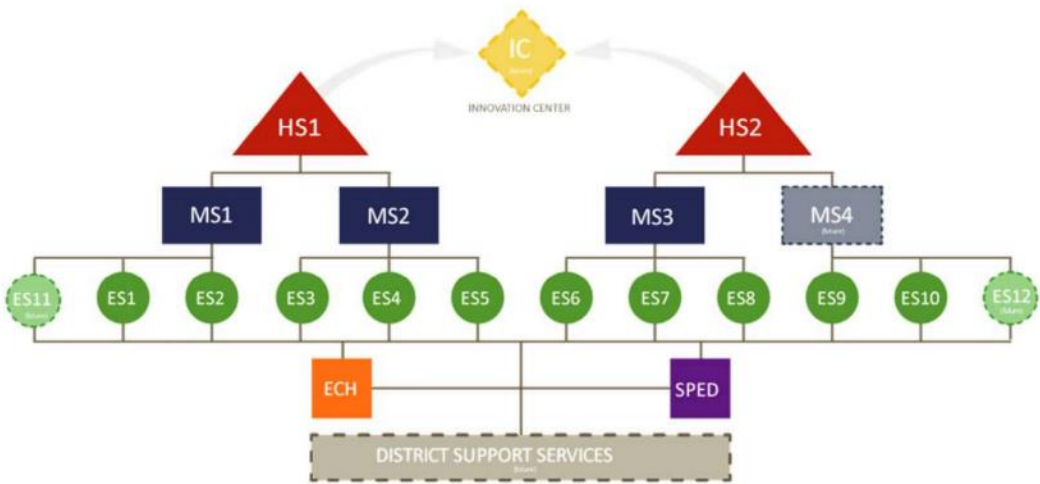
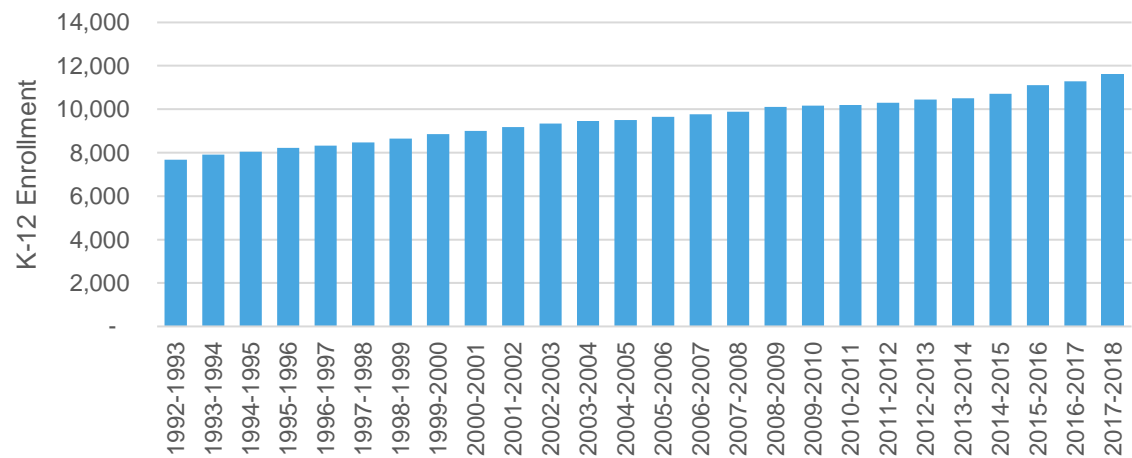
LEAD Ideation + Genesis



QUICK FACTS

- 70,000 SF
- 700 Students
- 34 Learning, Science & Design Labs
- 11 Focus Spaces
- 2 Facilitator Planning Centers
- Administrative and Health Offices
- Commons / Kitchen
- Outdoor Classrooms
- LEED v4 Certified (projected)

LEAD TIMELINE





Compliance



SHIFTING EDUCATIONAL PARADIGMS



Emotional Intelligence



Communication



Leadership



Digital Literacy



Entrepreneurship



Problem Solving



Team-Working

LEAD TIMELINE



96% of students accepted
at 4- year schools



COLLEGE AND CAREER READINESS

NEW TECH
STUDENTS PERSIST
IN 4-YEAR COLLEGES
AT A RATE OF
92%

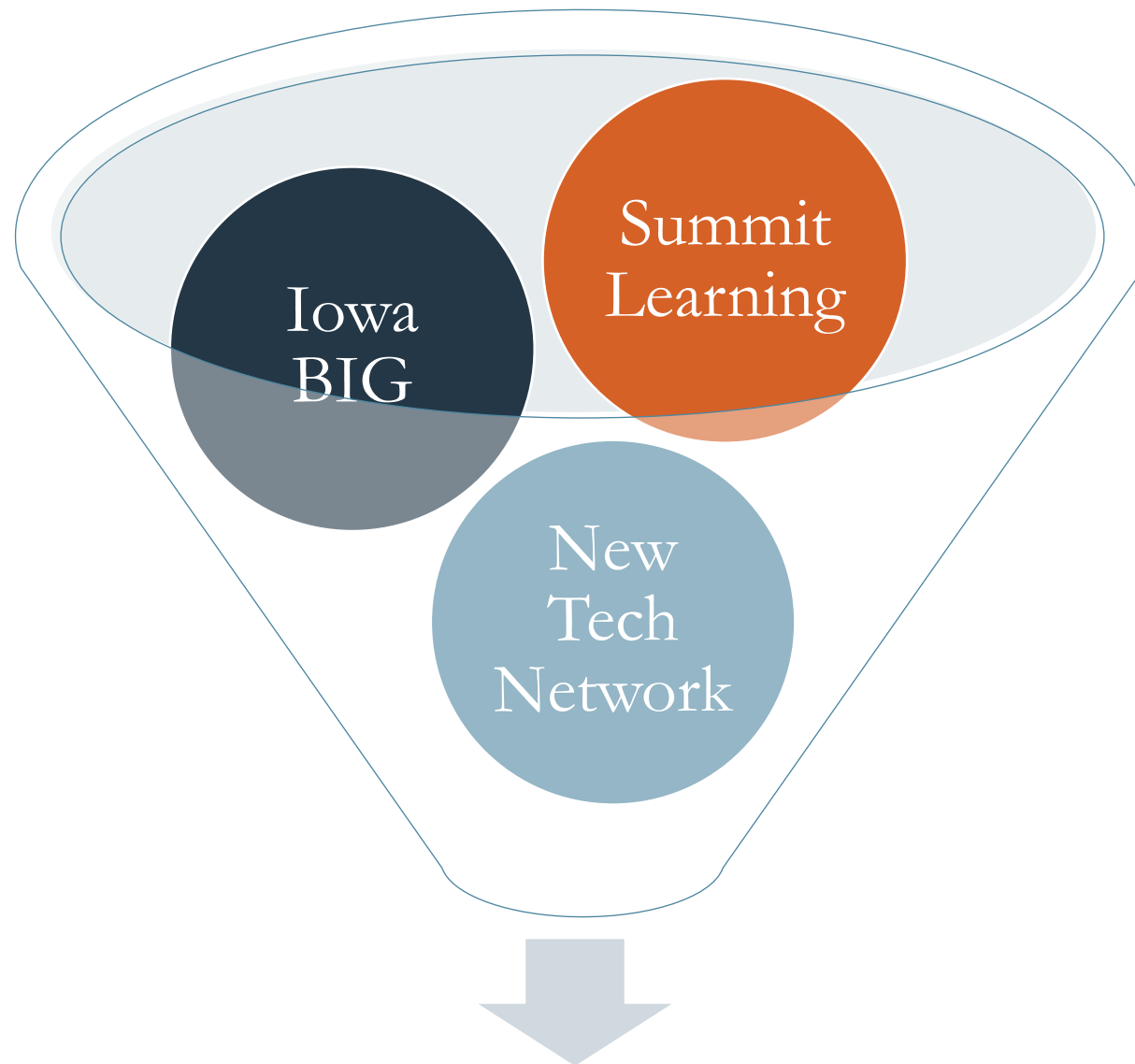


The 14 most innovative schools in the world



New Tech Network





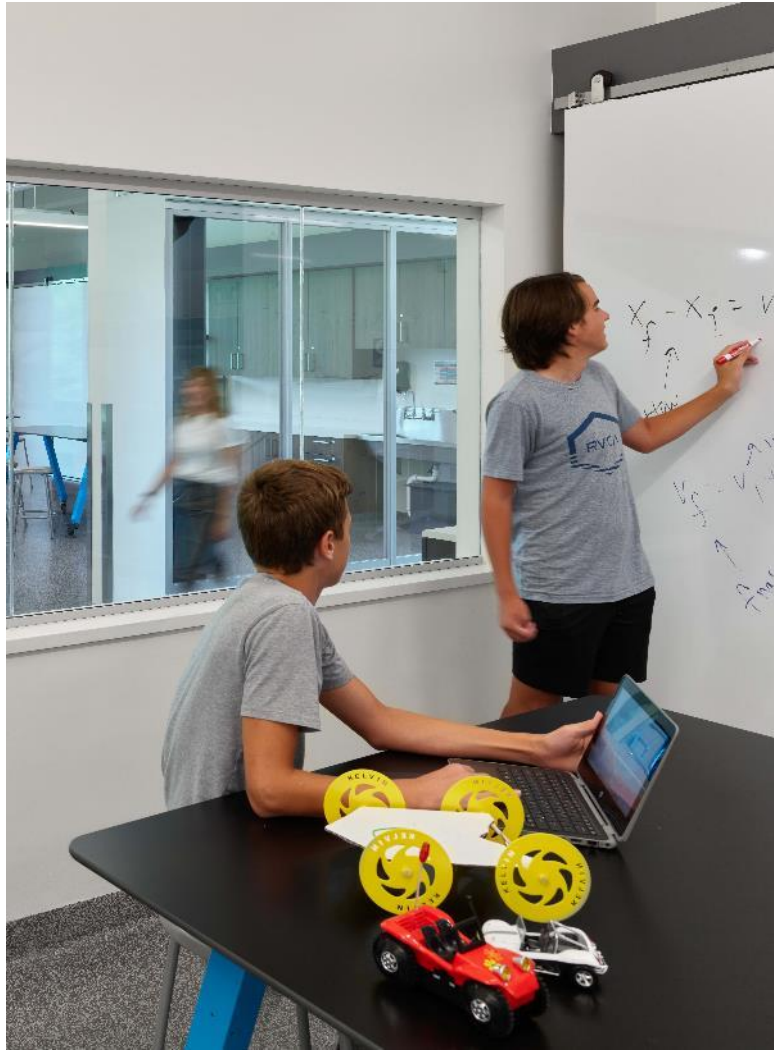
PARK HILL SCHOOL DISTRICT

LEAD

Innovation Studio

Lead. Empower. Aspire. Dream.

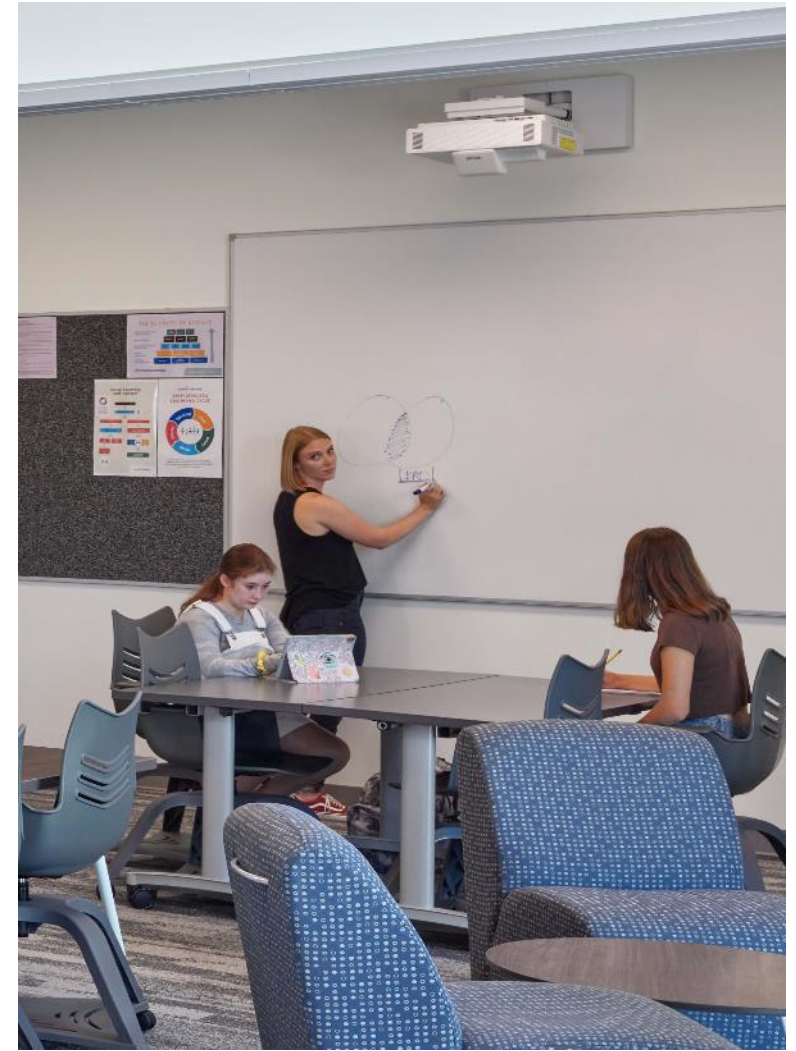




Project-Based Learning



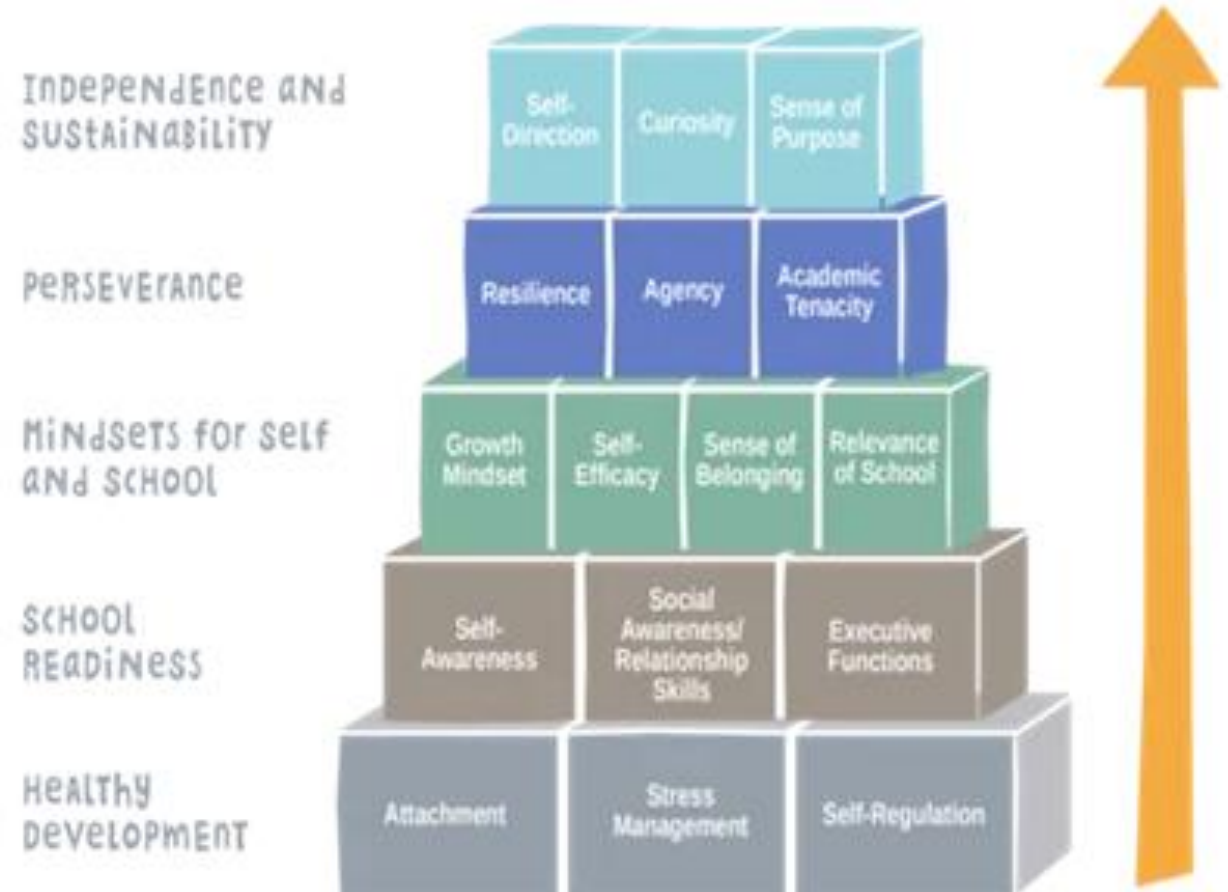
Self-Directed Learning



Mentoring

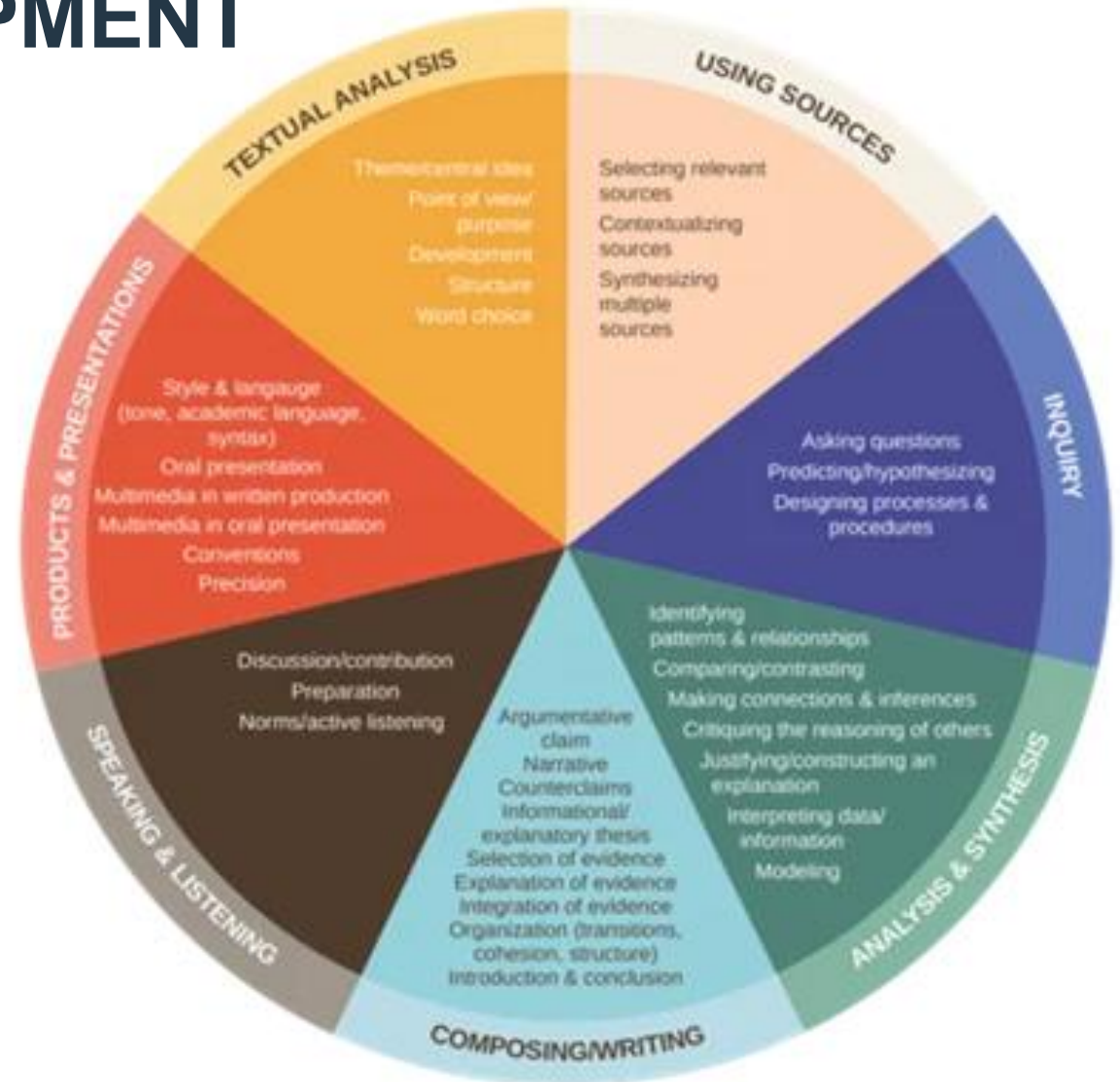
HABITS + MINDSETS

- Hierarchical Process Supporting Varying Student Needs at Different Age Levels
- Progressive Skill Development
- Research-Based Foundation



COGNITIVE SKILL DEVELOPMENT

- Transferable Life Skills
- Future-Ready Mindsets
- Goal Setting + Growth Approach
- Research Foundation



LEAD
EMPOWER
ASPIRE
DREAM

LEAD

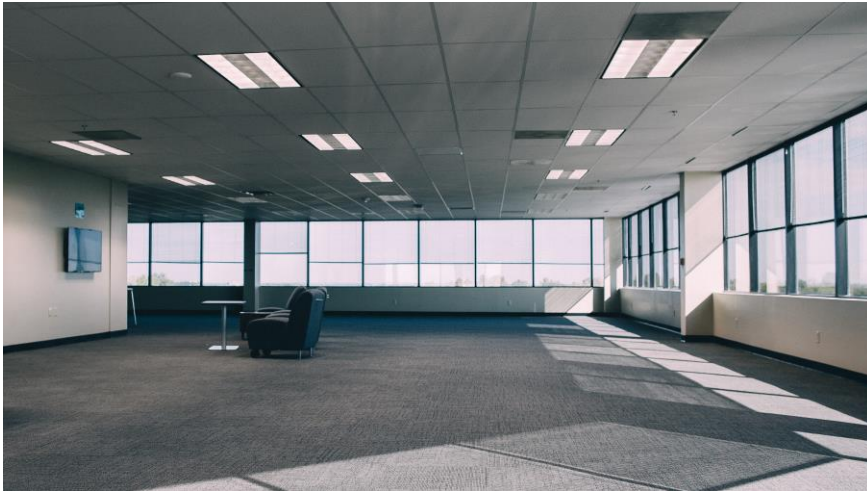
Vision: Challenging each student to be a LEADer, to be Empowered, to Aspire and to Dream

Mission: to mentor and empower all students to reach their full potential through collaborative and innovative experiences to positively impact their community

Values: Growth mindset, mentoring, community, empowerment, commitment, innovation

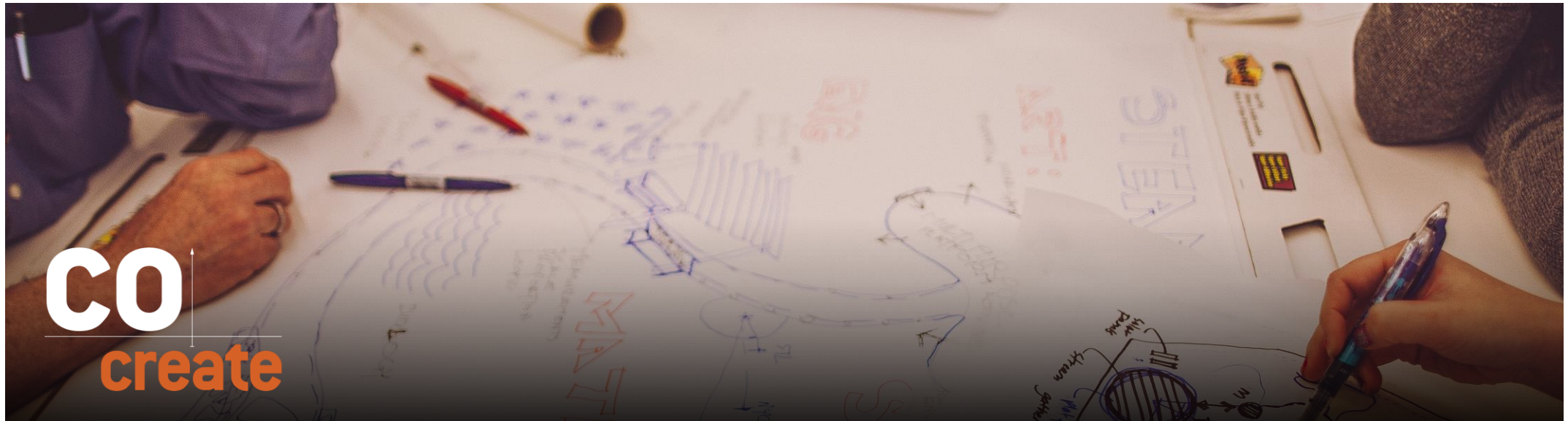


LEAD TIMELINE

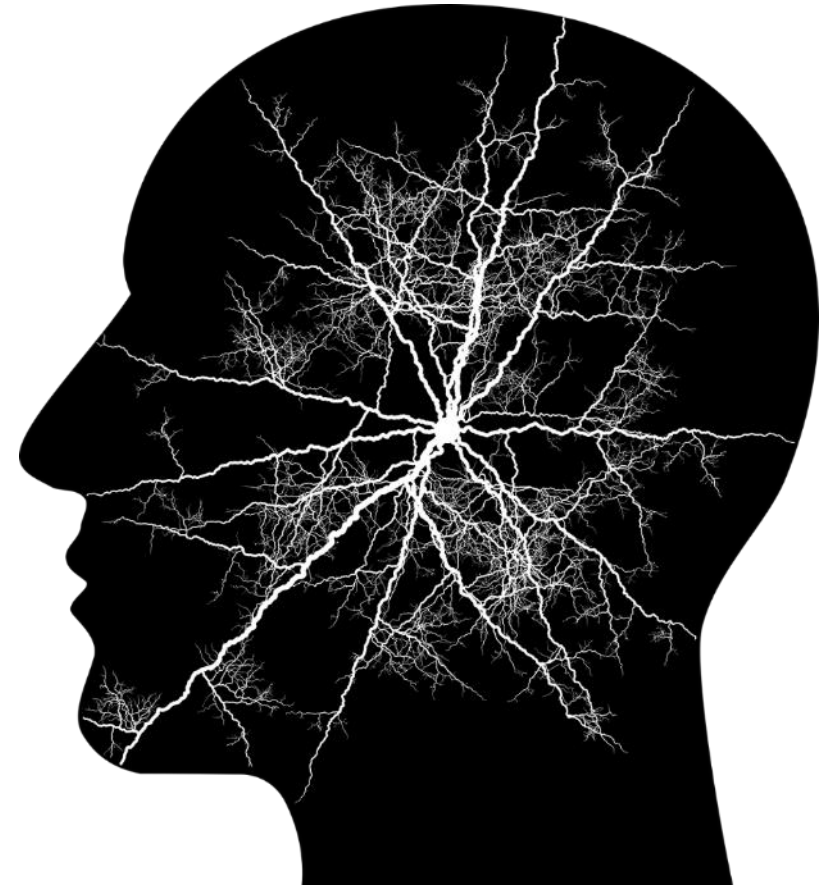
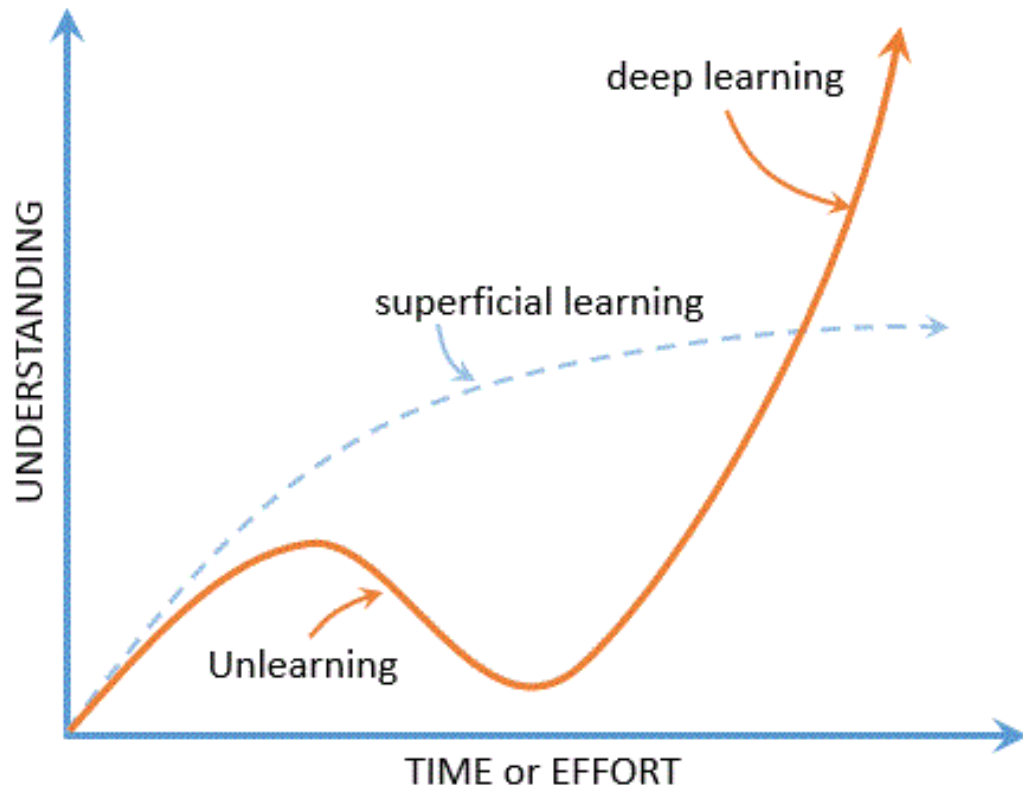




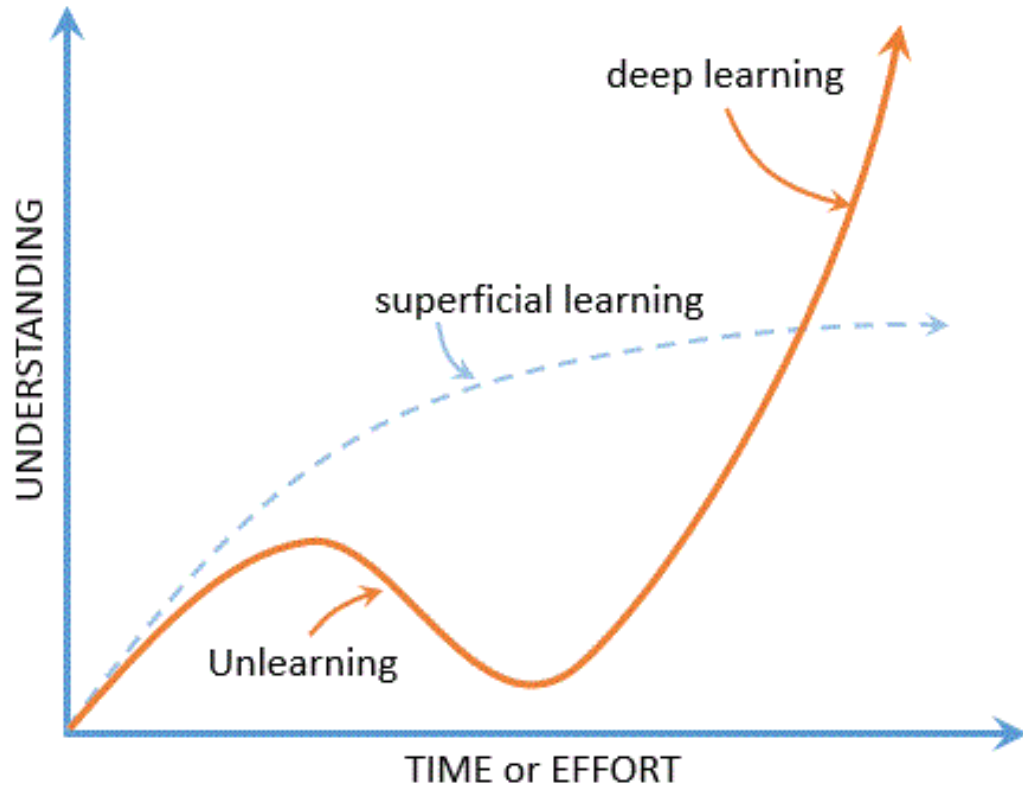
LEAD TIMELINE



SPATIALLY DIVERGENT MINDS SET



EMBRACING THE UNKNOWNNS



Number of
Students

Adjacencies

Number / Type
of Spaces

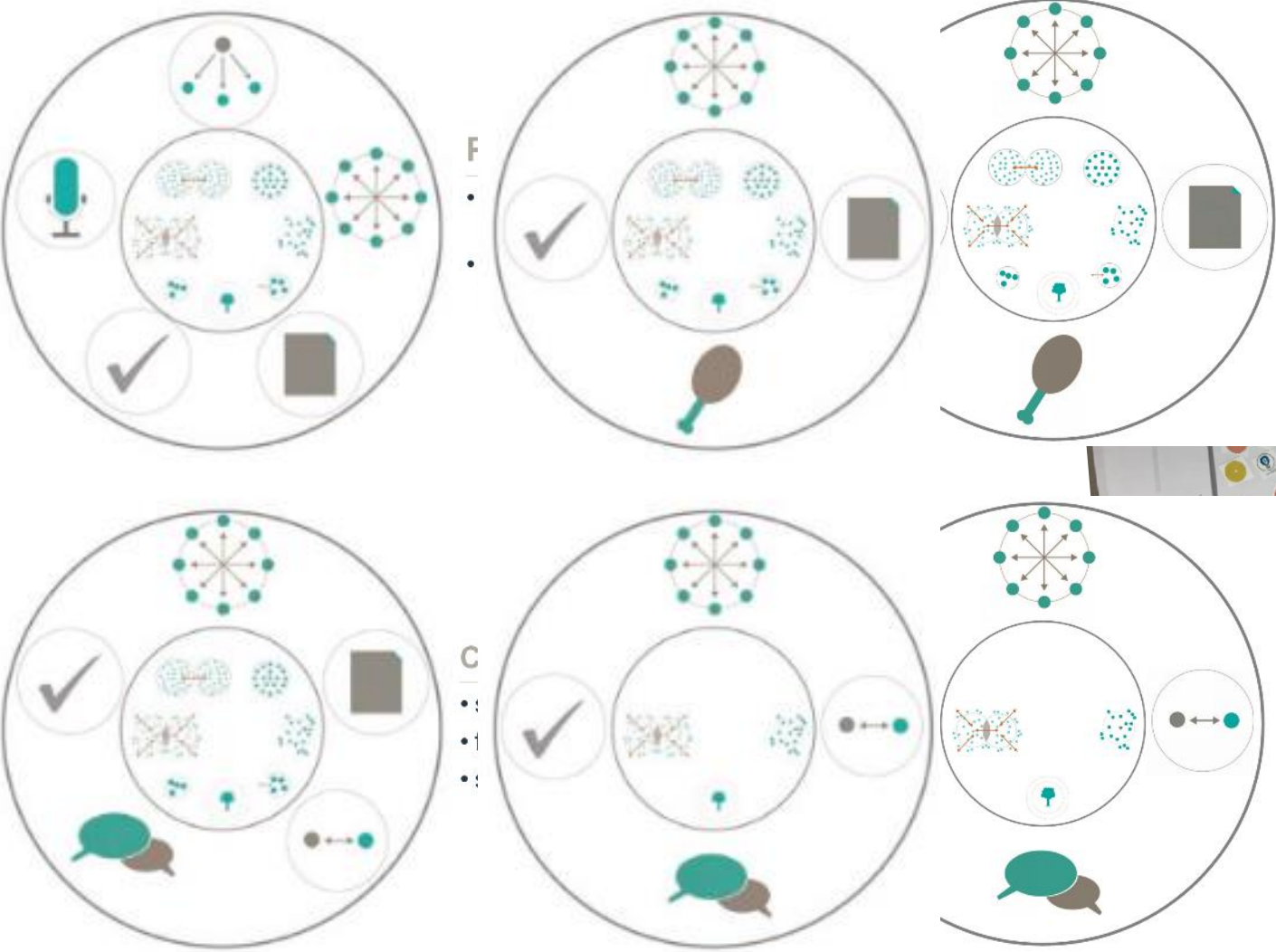


Typical Space /
People Ratios

Class
Schedule

Clear delineation
from Programming
to SD to DD

DISCOVERY PROCESS



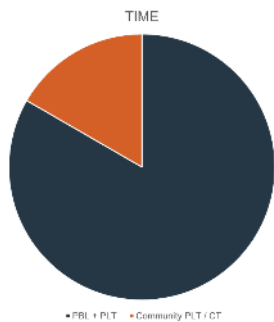
PLT

- different for every individual
- limited direct instruction
- can be intervention / enrichment time

Community Time

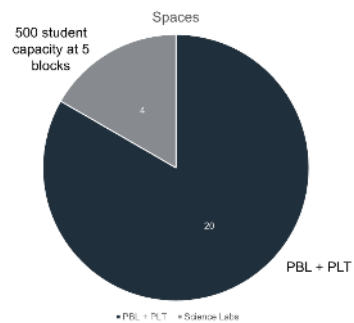
- club meeting time
- school / grade gatherings





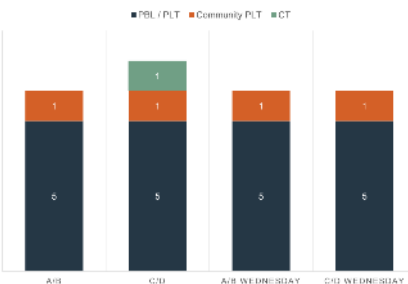
LEAD Schedule

- (5) blocks a day are PBL / PLT
- (1-2) blocks are Community - PLT and Community - Time



PBL / PLT

- (4) science labs
 - 500 student capacity
- (20) PBL / PLT Spaces
 - variable in accessibility and amenity



Community PLT / CT

- Community PLT occurs daily
- Community Time occurs twice a week
 - Community Time utilizes the entire building

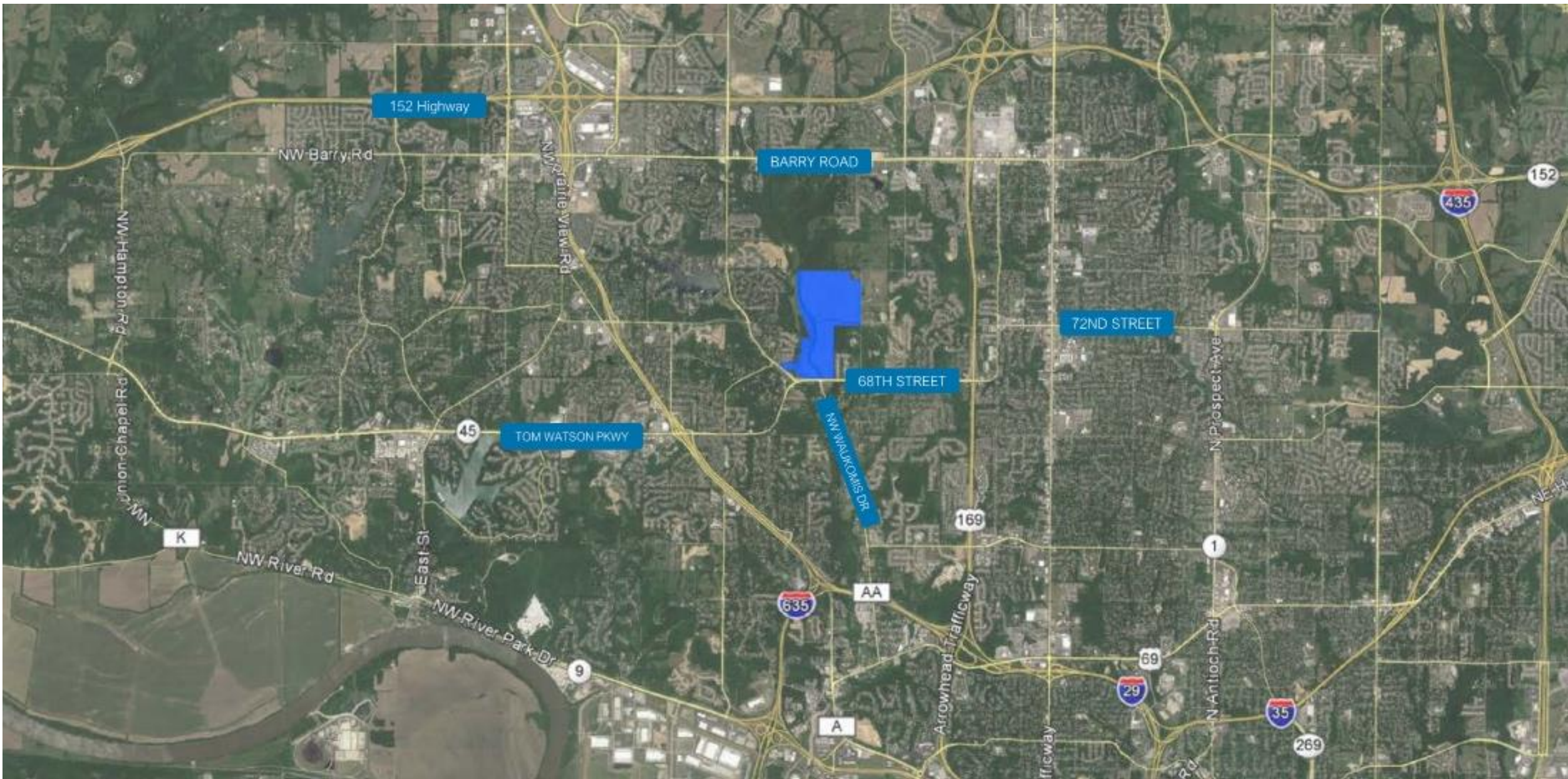


PBL / PLT

- 75% - 80% PBL
- PBL - 25:1 ratio
 - 19 learning spaces
- PLT - 25:1 ratio
 - 5 learning spaces

24 total learning spaces



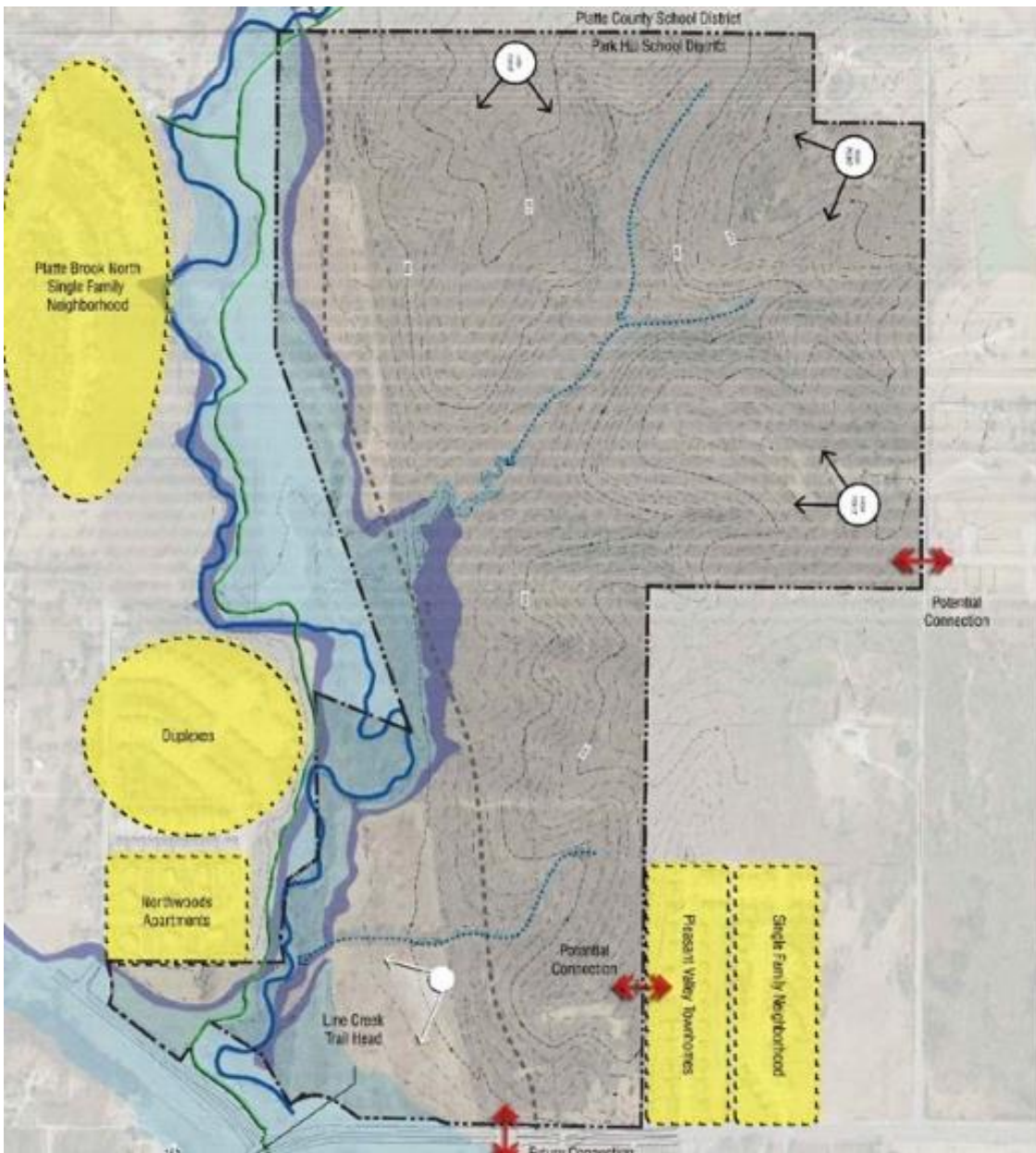


UNIQUE SITE OPPORTUNITY



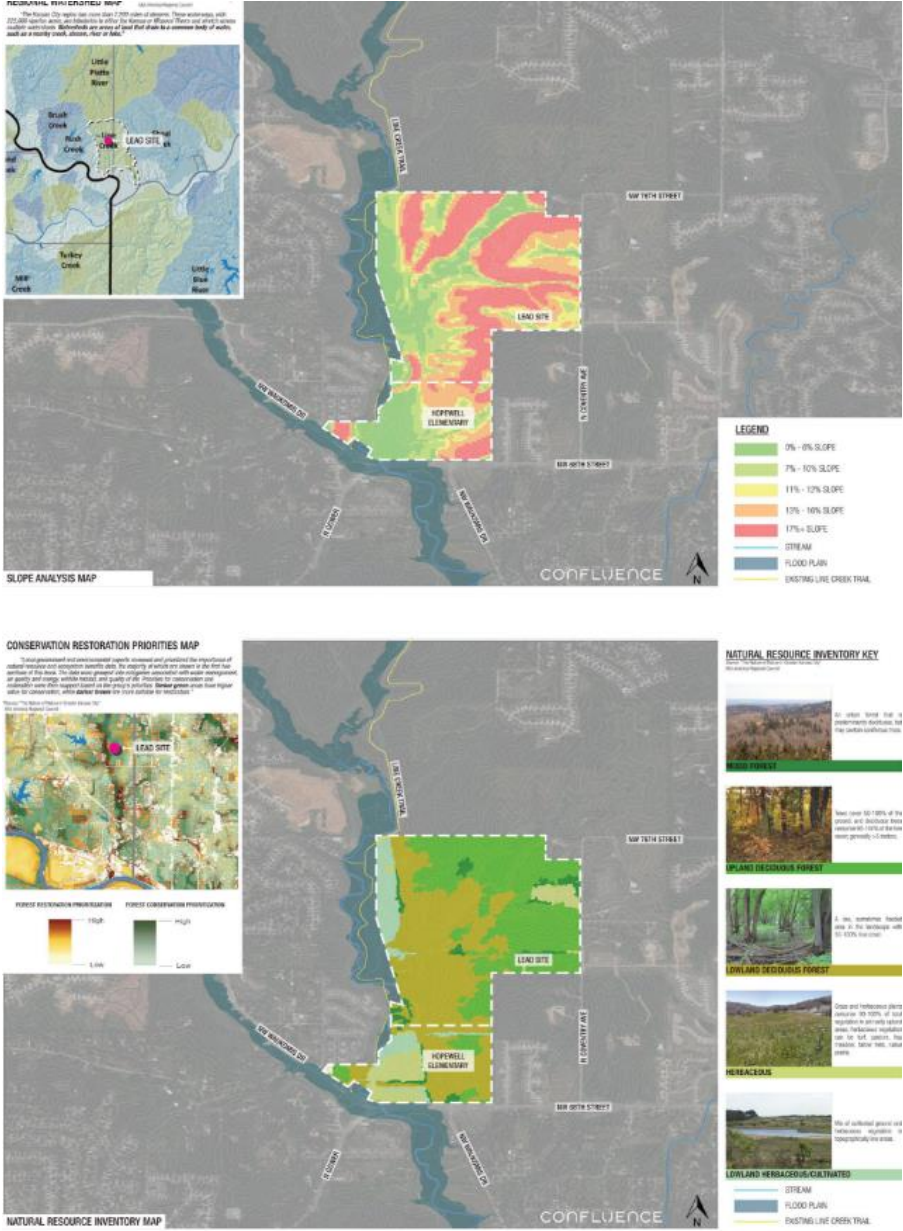


UNIQUE SITE OPPORTUNITY



UNIQUE SITE OPPORTUNITY





UNIQUE SITE OPPORTUNITY



SITE CONSIDERATIONS

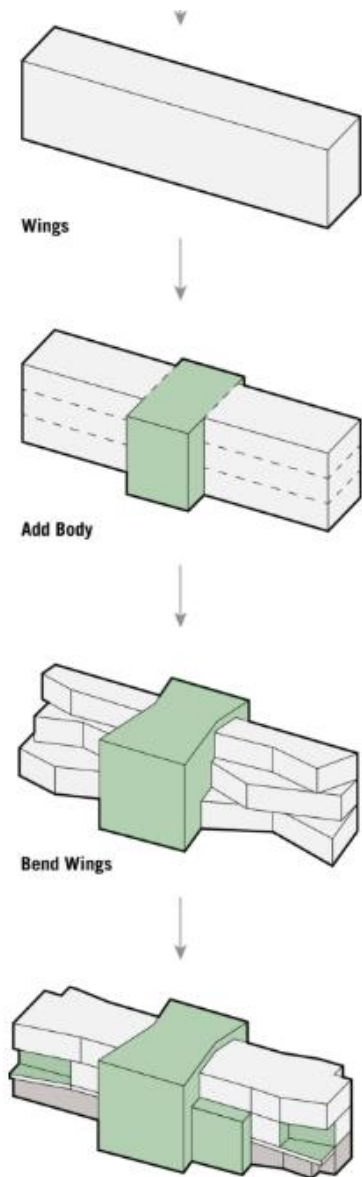
Minimize Site Disturbance

Minimize Visibility from Line
Creek Trail

Connect LEAD Students to the
Surrounding Nature

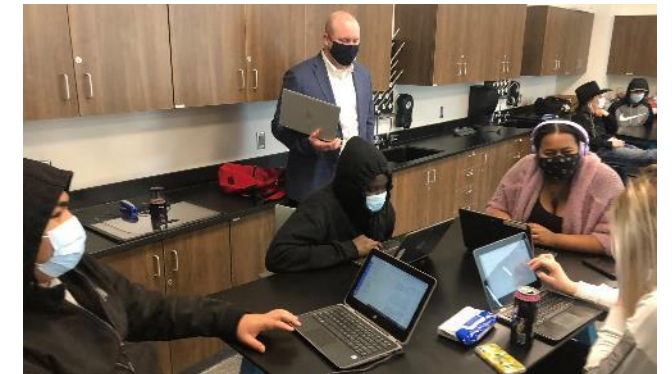


MINIMIZE DISTURBANCE





REDEFINING LEAD *one semester at a time*





The Unique LEAD Experience



DISTRICT GOALS

Engaging in Authentic Learning

Promote Collaboration

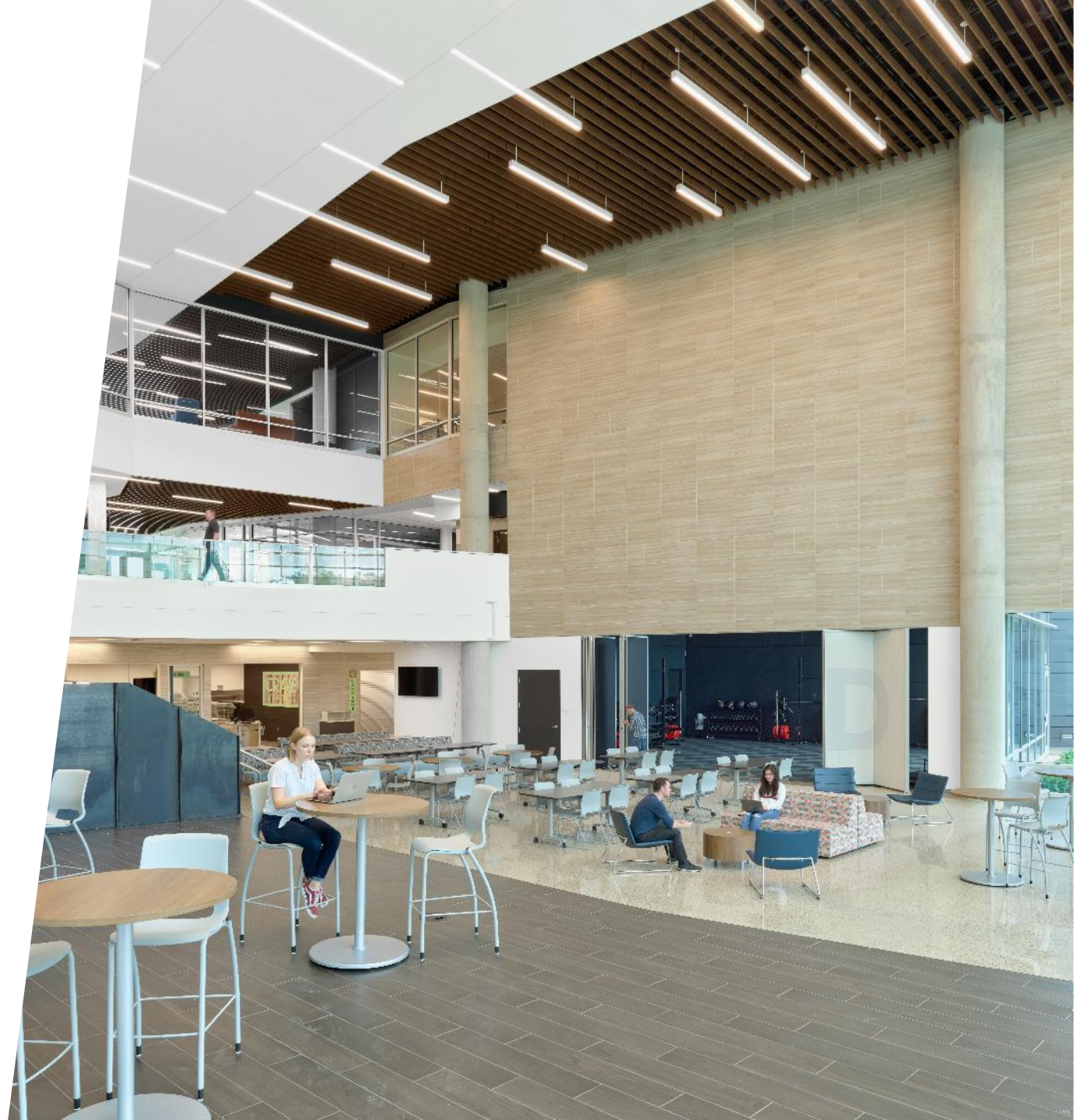
Critical Thinking and
Problem Solving

Content Mastery and develop
Cognitive Skills

WHAT'S NEXT

District Direction
Design Response
Through the Mind's Eye

Grounded in Place
Learning on Display
Professional Environment





Through the Mind's Eye

GROUNDING IN PLACE

DISTRICT GOALS

Community as core value

Nature as a classroom

Community partnerships





DESIGN RESPONSE

Site opportunities

Biophilic design strategies

A photograph of a dark, textured room with a single, brightly lit doorway in the center. The light from the doorway creates a strong glow and casts long, symmetrical rays of light onto the floor, which is also made of dark, textured material. The overall atmosphere is mysterious and contemplative.

Through The Mind's Eye

STUDENT PERSPECTIVE

Views from throughout the building to the outdoors & connection to nature

Access to outdoor learning spaces





FACILITATOR PERSPECTIVE

Connection to environment

Utilizing surrounding area
for inspiration



Through the Mind's Eye

LEARNING ON DISPLAY

DISTRICT GOALS

Inspire students & remind them why they're at LEAD

Empower students and facilitators to lead by example and create a stage for learning

Have a clear view of learning in action





DESIGN RESPONSE

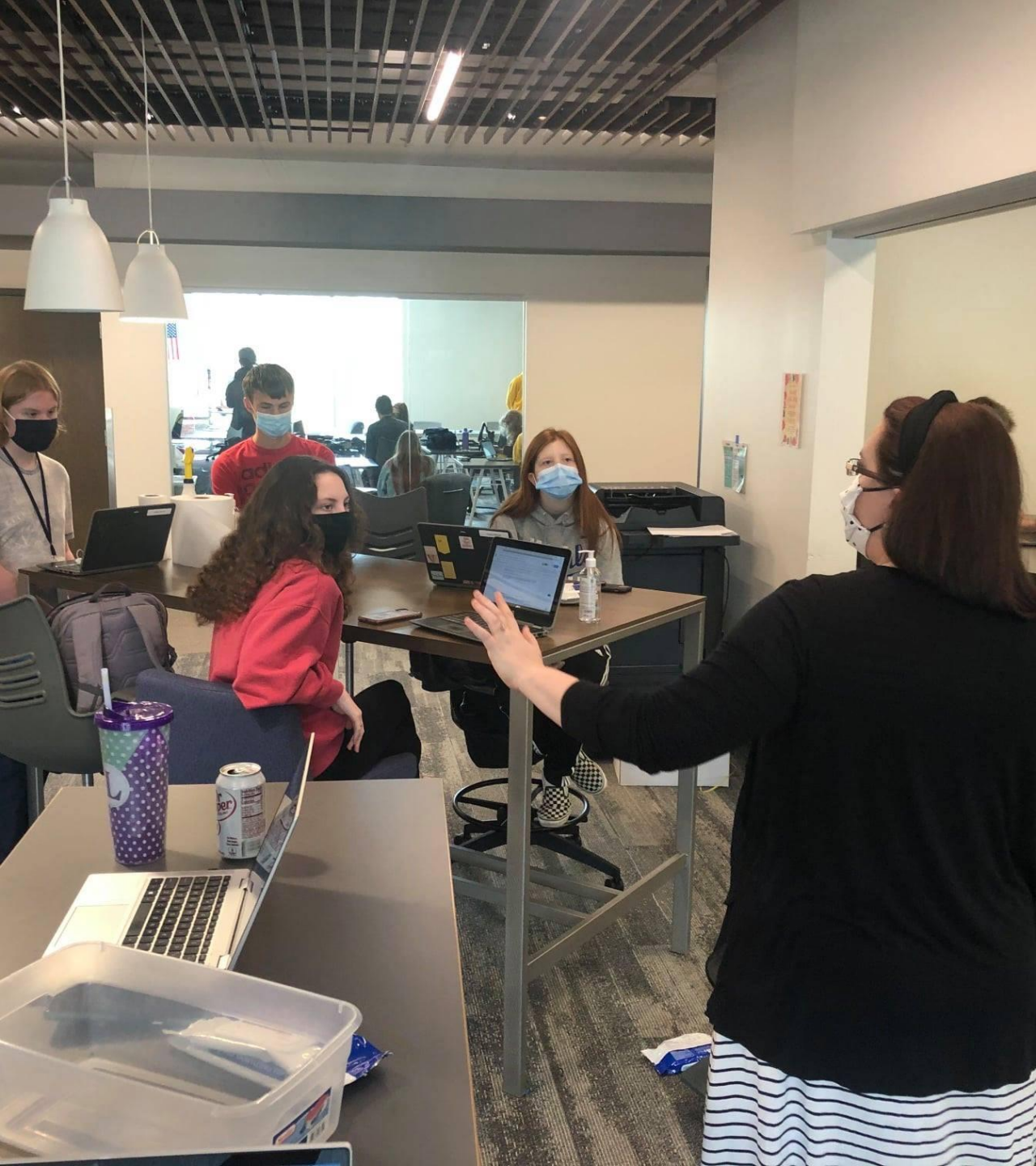
Aesthetic of LEAD
Framing Inspiration

STUDENT PERSPECTIVE

Impact of having your work
on display

Pride when walking down the
hall and seeing work





FACILITATOR PERSPECTIVE

Professionalism of displays

Overcoming concerns of
increased sightlines and
potential distractions



Through the Mind's Eye

PROFESSIONAL ENVIRONMENT

DISTRICT GOALS

Not feel like a school

Professional vibe

Spaces with flexibility

Spaces fostering
collaboration and
project work





DESIGN RESPONSE

A shift in environment...

STUDENT PERSPECTIVE

Simplicity of building gives
a professional feel





FACILITATOR PERSPECTIVE

Openness and modern spaces

Easier for students to see
professional study program
because it's happening daily

Inclusive restrooms

Q & A





THANK YOU!



Dr. Ryan Stanley
LEAD Principal
stanleyr@parkhill.k12.us.mo



Ryan Walters, AIA, LEED AP
HMA Partner | Studio Leader
rwalters@hollisandmiller.com



Melanie Farber
LEAD Facilitator



Megan Lee
LEAD Student

