



## Community Codesign

Putting the Concept of Bottom-Up Neighbourhood Planning Process into Pioneering Practice in Australia

2022 Kelley Tanner Award Submission

15 August 2022

# Applicants



**Janelee Li Ph.D**

Director of CSED Studio

0450225321 | [janelee323@hotmail.com](mailto:janelee323@hotmail.com)

Janelee Li is the Director of CSED Studio and her profession is in Urban Design and Landscape Architecture. CSED stands for Contemporary, Sustainable, Environmental Design. The studio provides Consultancy, Education, and Research & Development, and focuses on topics of healing spaces and livable cities, specifically in Australia's south east. She has many bilingual articles about Eco-cities, Social Cities, and Children Friendly Cities under her name, and her research was in "social neighbourhood design in urban residential development".



**Belle Yu**

Co Founder and Coordinator of Living Streets Association

0426234286 | [hsiaoibelleyu@gmail.com](mailto:hsiaoibelleyu@gmail.com)

Belle Yu is the Co Founder and Coordinator of Living Streets Association, which is about sharing warmth, fostering belonging, and bringing people together to revitalise neighbourhood streets. All projects, events, and activities conducted have the goal of building community in mind. She is in preparations of conducting research utilising her observations and practice of the concept "educational opportunities of a social neighbourhood" in Living Streets.





# Community Codesign

How should community consultations for planning be run to ensure the authentic voices of residents are heard, and the needs of people are met?

Community Codesign is a Bottom-Up Neighbourhood Planning Process that aims to encourage cooperation across all sectors while bringing strong community cohesion to the suburb. The contemporary planning process has seen an increase in compulsory community consultations that lack quality. There is huge potential for improvement, so we have taken it upon ourselves to coordinate a true community consultation process that informs the broader masses, proposes practical solutions, and bridges the gap in communication between the community and planners. This tremendous process opens up opportunities for the best real-world learning for local young people and design students. In addition, the community can get a sense of belonging from working together, and gain benefits from developments that best serve their needs as a result of properly conducted consultations.

*2018 Community Planning Meeting with over 100 residents as a result of inviting the community during multiple consultations at the local shops*

## Social and Community Responsibility

While there are opportunities for volunteering in Australian schools, the curriculum does not teach students about social responsibility, nor provide model examples about how they can contribute to their communities. Giving children and young people a chance to practice giving, and to feel the joy of service and selflessness will help them build stronger

relationships, and nurture good mental health. The campaign activities held are also a chance for young children to work with older brothers and sisters in the neighbourhood and see leadership in action.

By taking ownership of each step of the planning process through the Section 76 Campaign, it was easier to achieve our

ultimate goal of a Win-Win-Win; the community's concerns would be heard, the government and planners would be provided with survey information, community feedback, and proposal plans, design students would get real-world industry experience, and local young people would get to practice soft skills and learn about social responsibility.

*2022 Section 76 Campaign Activities organised by Living Streets Youth, supported by 2022 Design students*







## Real World Industry Experience

Institutions teach design and key skills for the industry, but students can only be prepared for the real world through professional experience. Design students who have participated in this program have been able to interact and cooperate with the government, community, and academia on an international level. This program has also enabled a cross-national collaboration with local students in Economics, Marketing, Environment and Sustainability, and many other faculties to take an interdisciplinary approach to the study. All of this was possible because we contributed our academic background and professional expertise to make these connections.

Covid19 was an opportunity to rethink the way we live and it allowed us to see the importance of focusing on healthy communities. Through the Regenerative Codesign Program, we conducted a post-Covid regenerative living-style study to see how our future residential housing could be the most self-sustaining in times of lost connections and restricted travel such as lockdowns and bushfires. The study integrated residents' ideas from Community Consultations by exhibiting every stage of their design process to create a master plan best fit for all needs.

*2022 Section 76 Campaign Design Students Working on the Regenerative Community Codesign Program*

## Creating Social Cohesion and Belonging

Most importantly, we are creating opportunities for social connection by engaging the broader community. Leading by example, we took responsibility to organise the community and encourage everyone to contribute so that we could work together toward a common goal. Furthermore, voluntarily collaborating as a team for the benefit of others increases your happiness levels and solidifies a sense of belonging that is crucial to a healthy life.

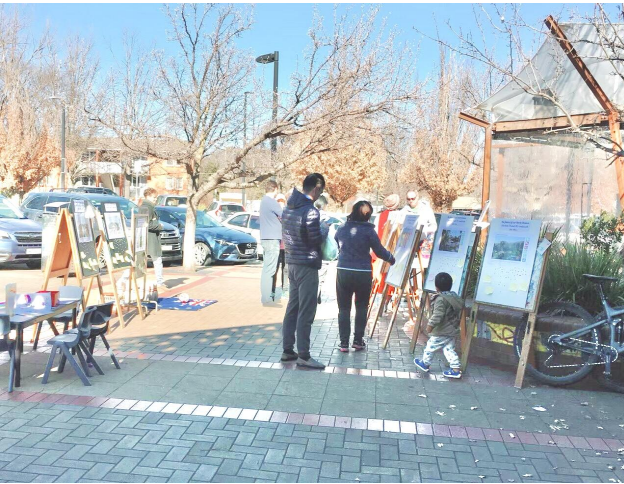
After executing a successful ongoing campaign of 4 years and counting, we can see the huge benefits to community connection, the ecology, and the development of future healthy living styles. The Community Codesign Process is the best learning environment for children, students, and the community beyond the classroom and is truly worthy of international implementation.

---

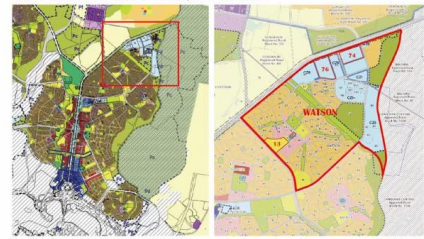
*The Community Codesign Process is the best learning environment for children, students, and the community beyond the classroom and is truly worthy of international implementation.*

---

*2018 Community Consultations at local shops, raising awareness, collecting ideas, and noting concerns*







# Concept

The contemporary planning process has seen an increase in compulsory community consultations that lack quality, and are not exhaustive enough to properly implement the people's concerns, ideas, and feedback into the plans. It was found that most residents would not have any idea about the development plans that were going to happen across their streets, and they would not have an effective channel to communicate with key decision makers. Many residents thought it was hopeless to try to push for change, or felt passionate about the lack of consultation and consideration of the existing residents.

On the other hand, our city was growing, and the government was concerned about increasing residential development closer to the CBD. The local economy would benefit, and there would be more affordable housing available for first-home buyers and other people on lower incomes. We understood that there was a gap between the goals of the community and the planners and invested in bridging that gap through creating connections and communication.

With our professional background in higher education within built environment faculties, we also saw how students were lacking real-world experience, hindering them from easily getting future jobs. Being still at school means that most students don't yet have the pressure of "following the rules" and have the freedom to explore



Site	Additional Residences	Station
Norebro	300	Approximate
Nagoe Crescent	80	Firm
4th Watson Estate	100	Approximate
Sections 24 & 25	400	Approximate
Life Watson	12	Selling
Carberra Technology	400	Approximate
Combined Increases	1194	

- New City Gateway**  
Natural Gateway Park  
The road into Canberra from Sydney is very important, so we want to create an entrance image or landmark that represents the city.
- Section 24**  
We made a guide map and treasure hunt to let the residents learn about the local ecology here, and how important this green space is to Watson.
- Agash 51**  
Bus Interchange  
We planned and designed a bus interchange that can create a friendly community environment.
- Watson Shop**  
For all the upcoming buildings going up around this area, Watson shops will need to increase parking spaces and have an improved traffic flow.
- Carberra Technology Park**  
We created a multifunctional space for all ages and added multiple different facilities that include skate parks, a community hall, and outdoor theaters to provide a comprehensive activity venue for residents.

innovative ideas that can help the next generation. The many year-groups of design students who have been involved in this project have been given a rare opportunity to contribute their skills to a real-world, professional case that requires out-of-the-box thinking.

Social responsibility is not an essential aspect of the Australian Curriculum, but this is vital for

society's future generations to grasp the concept of contributing to their communities. Without their participation in the campaigns, they may not have had the chance to develop important skills for their future careers in a community context and be able to feel a sense of belonging amongst their peers and the community. We aimed to reduce loneliness by inviting the community to be involved, and create many opportunities for neighbours to

interact with each other and create strong social cohesion.

This multifaceted project provides solutions to the combined needs of government and planners, the community, design students, local young people, and invites different community groups, disciplines, industries, and even cultures, to come together to create something never done before.

*2018 Initial ideas of usage of Section 76 for voting, discussion, and feedback with residents*





#### Grey-gang Cockatoo



I'm well loved in Canberra and my loud, creaky gate call is well known. As the male I have a bright red head and crest, with the rest of my body dirty-grey. My mate has a crest too. She is slate-grey all over, but sometimes has some red and yellow markings.

If you hear a creaky gate call in the sky, that's probably me!

#### Superb parrot



We are medium-sized green parrots. As the male Superb Parrot, I have a bright yellow forehead and cheeks and a scarlet band across the upper chest. My mate is a duller green although her tail feathers have a beautiful pink sheen. We love to roost in North Watson for parts of the year, because of the established gum trees and available ground water.

#### Superb Fairy-wren



As the mature male of the species I have black and bright blue feathers. I'm shy, but quite bold in the night environment. I am usually seen with a small group of duller looking Fairy-wrens, who are my family.

Look carefully! You can see up in bushes feeding on insects. We will visit your garden if there's low, dense vegetation. We may even nest there.

#### Crested Pigeon



I may look like an ordinary grey pigeon, but up close I have very colourful patterns on my wings and I have a conspicuous black crest. You might know me by the sound I make, as my wings whistle every time I take flight.

#### Buff-banded Rail



Sometimes you might see me hiding in the reeds near water, and sometimes my call might give me away. From a distance I look like a brown waterbird, but up close I have many distinctive patterns through my feathers.

If you sit quietly at Watson wetlands, you might catch sight of me.

#### Red-rumped Parrot



As the female, my colouring is duller. I have a green rump and faint yellow on my belly.

As the male of the species, I have striking blue and green plumage and red feathers on my rump.

You'll often see us in groups or pairs on Watson Oval or on footpaths quietly eating grass seeds.

#### Eastern Spinebill



For a small bird, I have a very loud call and you will likely hear me before you see me. But if you catch a glimpse, you'll recognise me by my long thin bill that probes deep into flowers to extract nectar. I have a grey-black crown and a red patch on the centre of the throat. My wings and lower back are dark grey while the underparts and upper back are yellow. I like eucalypt forests and flowering plants so plant flowering shrubs if you'd like me visit your garden.

#### Yellow-tailed Black Cockatoo



I'm a very large black cockatoo and you can hear my call from far away. I'm easily identified by my black plumage. I sometimes visit Watson on my way to Mt Majura. I favour a range of habitats, especially eucalypt woodland and pine plantations. I need very old, large gum trees for breeding hollows.



## Value

Our post-Covid regenerative living style study was stimulated by various concerns that we believe will be key opportunities in the application of good planning in the near future. Covid 19 and the consequent lockdowns compelled the world to think about the way we live, and also showed us that connected neighbourhoods and local communities are extremely important in sustaining a healthy lifestyle. We need to spend more time out in our communities to build strong relationships rather than spend all our time working and learning away in other suburbs. This study is just the beginning of exploring this planning opportunity.

Educational opportunities of this campaign include young people planning and hosting activities to share their environmental knowledge with peers and younger children. Guided by more experienced volunteers, each participant nurtures their social responsibility, so they can go on to support other groups in environmental action and related social campaigns. This ecologically-aware generation can work together to take action about the important things for our society and the earth.

Printing and other miscellaneous fees are generally the biggest costs that we come across in our campaign, but these out-of-pocket costs could be mitigated by collecting small donations from the community. The biggest cost is actually volunteers' time and energy that a campaign initiative such as the Community Codesign process really needs. Rather than preaching about the importance of volunteering in local areas, it is more suitable to

lead by example. People will not hesitate to contribute to their communities when they see HOW they can do so, especially if they understand the huge benefits as well.

Our goal is for more communities to be able to coordinate a campaign and implement this codesign process in their suburbs. While it may be difficult and a long-term process, we are showing that with more people contributing, the

right resources, and taking responsibility for the planning process, many, many benefits can come about. We also want the government to more proactively cooperate with communities, and give them the opportunity to influence planning. By improving the social capital of our communities through the exchanges in a campaign like this, the overall economic development will also have positive growth.

*2022 Regenerative Living Master Plan Design 3D Renders for Section 76 Watson*





# Delivery

The complexity of this codesign process is in the fundamental groundwork of communication and connecting with key personnel. We spent a lot of time organising community groups, universities, and neighbours so that we could put everyone together in a strong team. We are acting as the diplomats of the community to find out everyone's needs, and help them achieve what they want most. Each different sector or individual will have a different agenda in mind, so we must show our sincerity to touch them on a personal level. By doing this time-consuming and complex task, we can inspire people to also contribute their skills for the benefit of others.

The core of the Community Codesign campaign is involving the whole community in the consultation process so that they can have a holistic involvement in the planning of their suburb. This was done by raising awareness of the government's plans at countless shop-front consultations and in other important locations around the suburbs, at public meetings in community halls, and even going door-to-door. Everyone was encouraged to respond or make submissions to the government about the existing plans. Without notifying residents of the issues going on in the community, they would not have had the opportunity to engage in these important discussions, and the government would not be able to hear residents' ideas about the future of their neighbourhoods.

*2022 Section 76 Community Picnic Day with Consultations, 3D Models, and Bird Scavenger Hunt set up*



We then began to conduct our own study into the ideal community development based on the ideas collected from residents. Working alongside international design students and experts in these fields, the masterplan design study was also brought to frequent consultations in public spaces so that there was a sustained collaboration between designers and the community. This design is still being perfected, but it is a master plan created from a deep understanding of the land and what the community needs.

On top of community consultations, various events were organised to educate the community about the trees, birdlife, and ecology of the land, specifically at the block. The young people created a new holiday program each for younger children to learn about topics such as waste reduction, recycling, looking after our planet, and identifying local birds through talks, games, and play.

This year, the Living Streets Association media team collated the Section 76 Watson

campaign statistics, photos, documents and hard work of the community into a 16-minute documentary. This is a more succinct illustration of the 4-year long efforts that can be more easily communicated to all key stakeholders. Volunteers can feel seen for their contribution, the government will better appreciate the scale of support in this campaign and use the statistics to inform their decisions, and other community groups can learn the process to take the planning of their suburb into their own hands.

*2019 Youth Volunteers Hosting Holiday Program on Section 76, 2022 Interviews*





# Impact

The Section 76 Watson Campaign that has implemented Community Codesign has benefitted residents, planners, design students, local youth, other community groups, the planet's environment, and built social capital vital to a positive, functional society.

As a result of community consultations and raising awareness, 45 groups of residents wrote submissions to the government expressing their opinions about the development plan. The Government received over 340 ACT YourSay Surveys. The community also prepared multiple formal documents of the community's needs and expectations that can inform the planners' decisions in the future. The Government has since changed the number of housing proposed for the block from 400 to 200 dwellings, announced their intention to retain all trees on the block from previously stating that only 30% will be protected, and has provided a 1-hectare community park. This is a huge improvement thanks to the community's rallying efforts, but there is also still a way to go.

The program that has brought international students in to learn Community Codesign on a practical level has continuously received generous funding from the Taiwanese Government Education Department. This is a testament to the quality and benefit of the program for these young designers, and the impact it has had on their future career prospects. CSDE Studio's professors put time into getting to know the students and their ambitions, thus inspiring them and stimulating their willingness to cultivate their skills. The students often either decide to study overseas or to bring the innovative concepts they learn back to their own communities at home.

*CSDE Studio's Codesign Program Guiding Designers in Community and Regenerative Design Concepts*



The master plan that was created from the voice of residents and regenerative thinking informs future development, with each part of the process being built on the work of previous student year groups and consultation feedback. The Section 76 Watson Documentary has been watched over 300 times and shared on social media by many community groups. The Government has responded specifically to our community

group's submissions and is beginning to be more open to communication. Other local community groups have been inspired by our campaign and got in touch to learn some strategies to tackle some similar issues in their suburb.

Groups have also understood the importance of contributing to the community, and have started to implement the key ideas of

community building. For example, in the past 2 years, Youth With a Mission Canberra has opened their campus to welcome residents and has even conducted multiple community events where Living Streets Youth helped to lead activities. They are redefining themselves as a community hub of the North Watson area and providing facilities that are heavily needed.

*2020 Living Streets Youth Supporting Local Community Events by Leading Activities*





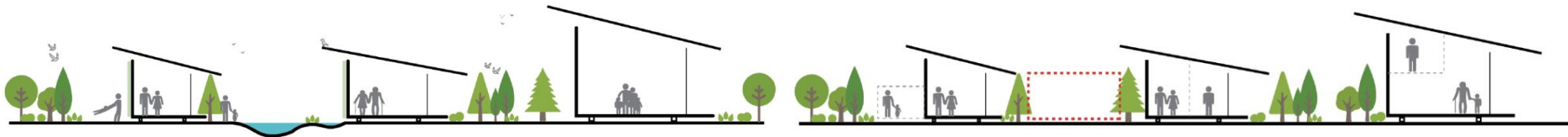
Social capital is measured by communities flourishing under bonding relationships, a sense of belonging, and connectivity with each other. All residents benefit from increased social capital as a result of increased opportunities for interaction from the campaign activities. Local young people can contribute their skills to the project, gain new ones, and feel belonging, reducing pressure on the parents to give their children character education by themselves. We have also protected environmental capital important to a healthy planet, and have endeavoured to show more people the value of trees, the ecology, and native animals through educational activities. The impact of this project is immeasurable in numbers,

costs, or statistics, because the true value was in all the people positively affected, and the influence on a promising future.

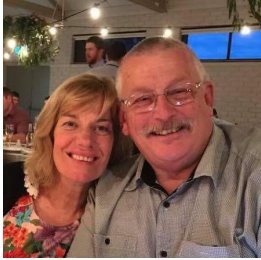
We need more planning that demonstrates a good model of post-Covid living, with architectural designs built to benefit people and the environment. Communities need more volunteers to take leadership and initiate these conversations about how we are to live together harmoniously in a well-planned environment. Our societies also need ways to build social capital and create a sense of belonging that is the foundation of our basic human needs. These ideas can be spread by sharing this Community Codesign Process and

Section 76 Watson Campaign Case Study with more people so that more examples of this process can be implemented elsewhere.

In October, Taiwanese Architecture Magazine, the top Architecture Magazine in the mandarin speaking world, will feature this case and broadcast it to academics, professionals, and decision-makers. There are already negotiations going on about the possibility to expand the implementation of this process in smaller towns of Taiwan. We are now putting efforts into promoting this case domestically through promotional materials, workshops, and social media, as we hope that it will be the beginning of similar projects in Canberra and Australia.



# Section 76 Campaign was also Supported by



**Dianne and Kevin Clark, Rod Thorpe, Leonie Watts**  
Educators of YWAM Canberra  
Long Term Committee Members of the WCA



**Megan Mears**  
Chair of WCA 2020-2021  
Committee Member of Watson Planning Group Since 2018



**Geoffrey Murray-Prior**  
Committee Member and Chair of Watson Planning Group 2018-2019  
Chair of WCA Since 2022



**Simon Clarke**  
Chair of Watson Planning Group Since 2020  
Committee Member of the WCA Since 2018



An aerial photograph of a large, open green field with scattered trees. In the background, a city is visible, followed by rolling hills under a clear sky. The text 'Supporting Documentation' is overlaid in white on the lower left of the image.

# Supporting Documentation

- 2 Endorsement Letters
- Section 76 Documentary
- 3 Living Streets Association Articles
- Section 76 Regenerative Community Codesign Program- Masterplan Study

## Letter of Reference and Endorsement

I am writing this letter of recommendation for CSED Studio and Living Streets Association for the Kelley Tanner Innovation Awards. Their 4 years long project empowered the community through participatory design and establishing community social responsibility. They voluntarily devoted their professional background to their local community, and created REAL community projects that bring opportunities to learn for not only young people and the community but also the government and related industries.

CSED Studio works with faculties and students from Taiwan and delivers an international Community Co-design course that implements leading practices in participatory design to give design students firsthand experience that they cannot get in a common classroom environment. Participatory design is a key subject taught in major built environment institutes in Taiwan and has been well practised in built environment industries for the past two decades. University Social Responsibility is also an important part of their design curriculum, which provides opportunities and guidance for students to give back to their community. Flourishing community codesign practice in Taiwan results in designs that are better fit for people's needs.

The program not only encourages students to interact with community members on a personal level to understand their needs, but also guides students to conduct in-depth studies into the context of the community, such as the local ecology and major stakeholders to deliver a proper Co-designed Masterplan. The cross-discipline collaboration of different faculties such as urban design, planning, and built environment, is also something that students rarely experience in the usual academic learning environment, despite being very common in the real world.

Living Streets Association has created opportunities and encouraged young people to contribute to their local communities. Their accomplishments such as helping to retain and protect trees on the block, and assisting the rezoning process by collecting, analysing, and providing important statistics and information to the government are great. The process which elevated the community spirit and sense of belonging is really worth high recommendation.

CSED Studio and Living Streets Association are pioneers in implementing evidence-based concepts in a new environment and deserve the Kelley Tanner's Innovation Award.

Sincerely,



Associate Professor Chang Hua Sun  
[huasun@cycu.edu.tw](mailto:huasun@cycu.edu.tw)  
 Associate professor of CYCULA  
 Former head of the department of  
 landscape architecture faculty  
 (2012-2017)  
 Member of TILA Taiwan institute of  
 Landscape Architecture





## To the organisers of the Kelley Tanner Innovation Awards

Living Streets Association is deeply committed to helping communities thrive and work together. The ideas of sharing, learning and contributing to each other's well being are experienced directly at a grassroots level through events, programs and daily activities. All the activities of Living Streets support the effective animation of village life yet they do so without a village structure in place. Community is created despite the absence of an urban pattern that supports the principles of community. This is a testament to the effectiveness of Living Streets' principles, practices, passion and commitment to their community.

Living streets commenced creating programs for the young, teenagers and parents and seniors some 11 years ago. Through engagement with all ages, the evolution of community spirit has been evolving within the Watson neighbourhood and spreading to community activities beyond the suburb. The programs that are now operating cover a wide range of topics that include welcoming new families, introducing children and teenagers to each other through games, events, activities and learning new skills. The young volunteers also participate in wider community activities such as the Section 76 Campaign.

The effect of involving the young in the community activities and learning and sharing the value of caring for each other naturally percolates to the parents and seniors in the community embracing the co-education and caring of our children and young adults. This way, they acquire social skills and consideration and respect of each other and our natural environment from various adults like elders in a village. Living Street's work aligns with our commitment to research and practice of the design and role of village design as a way of creating an urban structure that supports the creation and sustainability of healthy communities.

CSED Studio integrates the teaching of graduate students in Architecture, Landscape and Industrial Design, and fuses the research and education in regenerative design, creating healthy communities and natural habitats in our neighbourhoods. They have been providing the knowledge and wisdom necessary for communities and nature to thrive and regenerate.

CSED Studio's international program and educational experience integrate the development of the community in practice with the design theory of regenerative design

which is currently being explored in Section 76 Watson. Design theory is merged with the reality of integral community consultation which is feeding community needs, experiences and perspectives to the design act. This is a melding of theory and practice and shows how sincere and effective community consultation may inform and enhance the design of our built environment.



Section 76 Campaign is a project that CSED Studio and Living Streets have been supporting as a place to develop village living in a truer expression of community structure. The village planning pattern is associated with supporting safe, healthy neighbourhood planning where sharing of knowledge, care, parenting, food growing and connection with nature, creative pursuits, management, business and leadership skills. A village urban setting as promoted in Section 76 expresses and enhances community for all ages. The work on Section 76 Watson has been a vehicle for educating design students in Community Consultation, community urban planning expressed as a village and the principles of regenerating ecology. This work brings to life the timeless way of community living in a village structure which was how civilisation lived until the invention of the car a little more than a century ago.

The integration of the work by Living Streets is bringing opportunity to all ages to experience a multiplicity of life skills covering cooperation, support, teamwork, and shared responsibility for each other's well-being and the wellbeing of our natural habitat. Through these activities and events, leadership and ideas of regenerating community and ecology are integrated into the lives and hearts of the local community and the design students from abroad.

The current status of Section 76 is a representation of community aspirations across all ages with each person's skill and life experience elicited through sincere community consultation, engagement, and participation. This has identified the needs of people at all ages and how these needs may be expressed in a design that embodies these values to enable the community to flourish. I fully support Living Streets and CSED Studio for their application for the Kelley Tanner Innovation Awards.

I have seen the effect of a passionate and selfless group of neighbourhood residents working to help assist each other in their community. All who are involved are experiencing how true communities may work to generate new ways of coexistence and genuinely nurturing environments that we surely need.

The work on Section 76 Watson is a testament to the conviction and commitment to serve and support and help make their local community alive.

Well done Living Streets Association and CSED Studio. Keep doing your important work. You are amazing.

Sincerely,

Paul Barnett FAIA Architect  
Director Paul Barnett Design Group Pty Ltd.  
Doctoral Research in Regenerative Design

Architects, Artisans & Project Managers  
Unit 2/15 Sargood Street O'Connor ACT  
2602 | T: +61 2 6213 5555  
[www.pbdg.com.au](http://www.pbdg.com.au)



2021 AWARD: MBA Commercial Buildings less than \$1mil: Blue Gum Dickson  
2019 AWARD: MBA Sustainable House of the Year: Hackett Gardens  
2019 AWARD: RAIA President's Award: Outstanding Contribution to Architecture  
2017 AWARD: MCA Excellence in Brickwork: Daramalan Dempsey Building  
2015 AWARD: HIA GreenSmart Energy Efficiency Home of the Year: Carwoola  
2014 AWARD: MBA Commercial Building: Daramalan Lysaught Building  
2013 AWARD: RAIA Education Prize: St Joseph's ECLC  
2012 AWARD: MBA Commercial Buildings less than \$5mil: St Joseph's ECLC  
2011 AWARD: BER RAIA Education Prize: St Thomas Kambah Primary School

Paul Barnett  
Design Group



# Section 76, Watson Documentary

[https://www.youtube.com/watch?v=bRNxM\\_lp5Tw&ab\\_channel=LivingStreetsAssociation](https://www.youtube.com/watch?v=bRNxM_lp5Tw&ab_channel=LivingStreetsAssociation)



# Living Streets Article:

## Section 76 Watson- Future Regenerative Community Living

<https://living-streets.com/2022/08/06/section-76-watson-future-regenerative-community-living/>



Concepts

### Section 76 Watson: Future Regenerative Community Living

Ian Shih | 2022 July Since early 2016, the government has made many large-scale developments for the new Watson area because of housing needs. In recent years, due to the soaring population, the local infrastructure has faced the pressure of overpopulation, leading to more inconvenience and loss of quality of ...

CONTINUE READING

08/06/2022





## Section 76 Campaign-Community Consultations

Section 76 Campaign- Community Consultations

This sentiment was shared by many passers-by who engaged with the Living Streets Youth at the Community Consultations held at Watson shops over 2 weekends of the April school holidays.

[illegible]

# Living Streets Article:

## Ecology of Section 76

<https://living-streets.com/2022/02/27/ecology-of-section-76/>



Concepts

## Ecology of Section 76

Residents who have lived in Watson for the past decade will know that block 74 (next to Solstice) is where you can stop by and say 'Hi' to the cows grazing along the fence, and block 76 (next to YWAM) used to be where you could spot tens of Kangaroos lazing around.

02/27/2022





# Section 76 Regenerative Community Codesign Program- Masterplan Study

Attached as A4 PDF in following pages/  
Google drive folder



坎培拉/沃森/76號社區實驗場  
Canberra/Watson/Community Experiment Field No. 76

## 疫後重生

2019年COVID-19開始至今已超過了3年，因為區域的封鎖及停滯的經濟，使的人們的生活不得不改變腳步，重新檢視生活於城市最重要的事情；重新檢視生活於社區最重要的事情。

社區是否具備完善的區域機制，在面對封鎖及緊急事件時仍能保持一定的機能與服務空間，面對疫情時不再只是面臨隔離及大量搬遷造成疫情二次遷移，同時我們也在這次的疫情之下看到了社會的資源不平等與缺乏對於弱勢的照顧。

因此「彈性設計」及「去中心化」的概念尤為重要，好比人們可以安全的、輕鬆的獲得基本服務及照顧，獲取新鮮空氣及陽光，有足夠的綠地空間可以活動，在地的社區中心提供採購、飲食、健康、工作機會...

面對未來多變的氣候、經濟等衝擊全球的因素，社區應在城市中扮演什麼樣子的角色？而聯乘網路的發達與工作模式的改變，住戶空間又應如何改變才符合未來30年的社會狀態，都是值得我們在這個時間點重新思考的好機會。

