The image shows a modern school interior with a high ceiling, recessed lighting, and a grid of acoustic panels. In the foreground, there are several wooden tables and chairs. In the background, students are sitting at desks, some using laptops. A red banner is overlaid on the right side of the image, containing the title text. The overall atmosphere is bright and collaborative.

# Lessons from the Heartland: How Indiana School Districts are Raising the Game

FANNING HOWEY

## PRESENTERS



- **William Payne, AIA, LEED AP**  
Project Executive, Fanning Howey  
[wpayne@fhai.com](mailto:wpayne@fhai.com)  
[www.linkedin.com/in/wepayne](http://www.linkedin.com/in/wepayne)



- **Greg Monberg, AIA, REFP, LEED AP BD+C**  
Director of Design Research, Fanning Howey  
[gmonberg@fhai.com](mailto:gmonberg@fhai.com)  
[twitter.com/GHMonberg](https://twitter.com/GHMonberg)

# INDIANA - TRENDS IN EDUCATION

Enrollment 2012-13

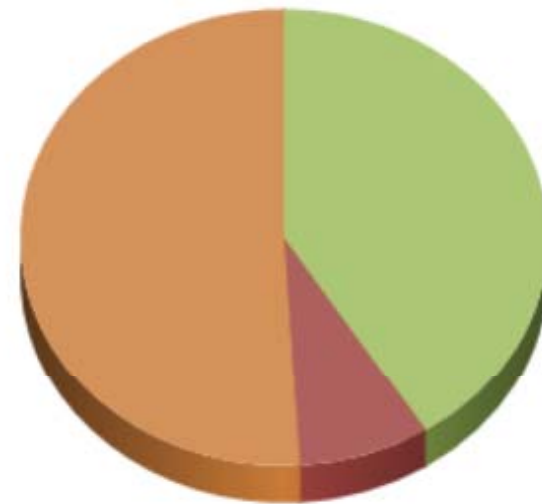
[1,041,311 students](#)

Enrollment 2012-13 by Ethnicity



American Indian    Hispanic    Multiracial  
Black    White    Native Hawaiian or Other Pacific Islander  
Asian

Enrollment 2012-13 by Free/Reduced Price Meals

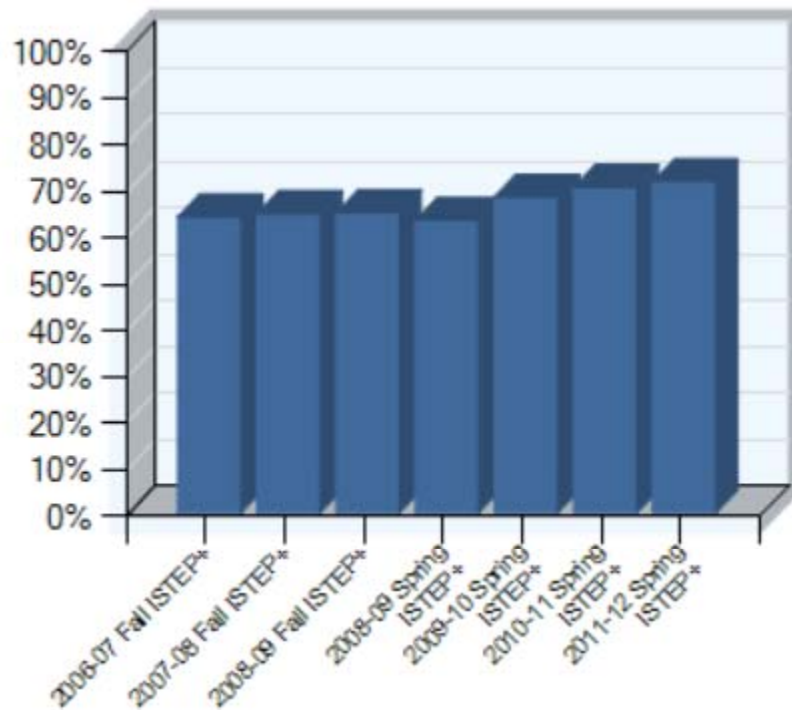


Free meals    Reduced price meals    Paid meals

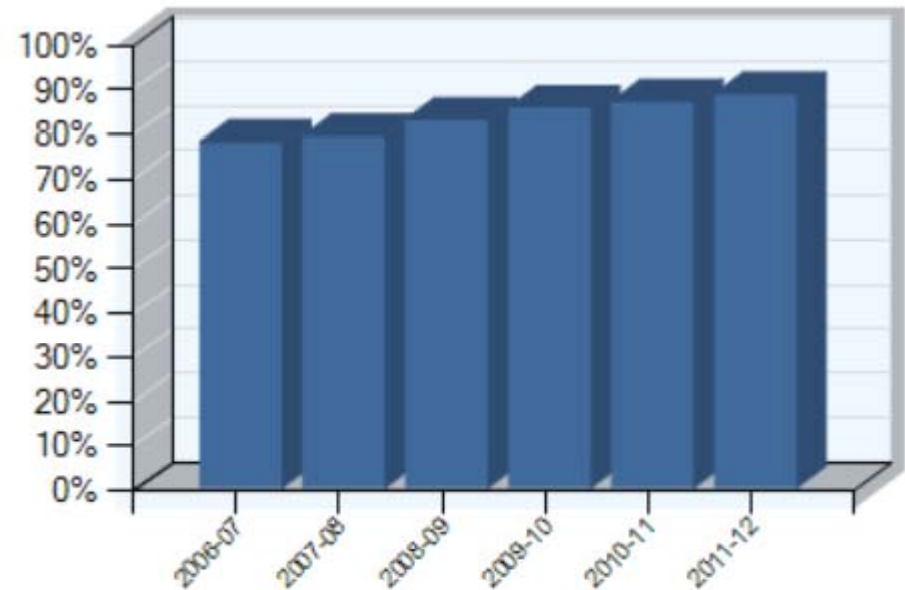
Source: Indiana Department of Education Web site

## Test scores and graduation rates are gradually increasing

ISTEP+ Percent Passing Trend



Four Year Cohort Graduation Rate Trend



Source: Indiana Department of Education Web site

## ▪ 2011 – Legislature Passes Indiana Education Reform Package

### Teacher Evaluations and Licensing Act

- Merit-based pay

### Charter School Act

- Expands the funding available to charter schools
- Lease empty public school buildings for \$1

### School Scholarships Act

- School of choice vouchers for students in schools deemed to be failing

### Early Graduation Scholarship Act

- Students finishing high school in 3 years receive \$3,500 to apply to college costs

## Controlled Project\* Approval Process in Indiana

Pre-1995

- Local School Board approval required
- Citizens could remonstrate against the form of the lease financing

1995

- Petition-Remonstrance process introduced for controlled projects

2005

- Public Law 74 passed allowing Design-Build in Indiana (once again)

2007

- Property assessment process converted to real property values

2008

- Public Law 146 created referendum requirements for projects in excess of \$10 M and introduced property tax caps
- 1% Residential Properties
- 2% Farmland and rental properties
- 3% Business and manufacturing

2010

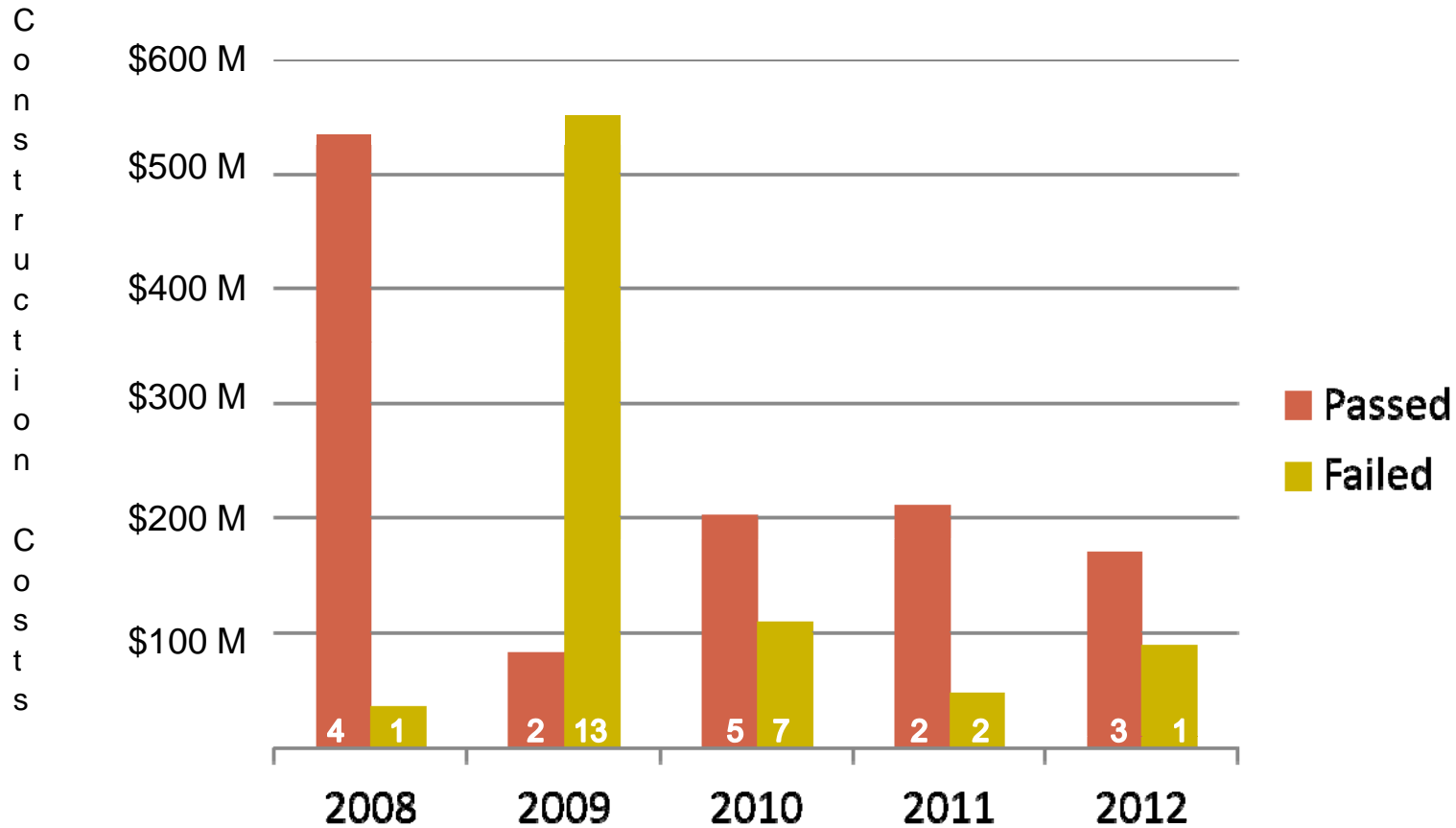
- Property tax caps became part of State constitution

2013

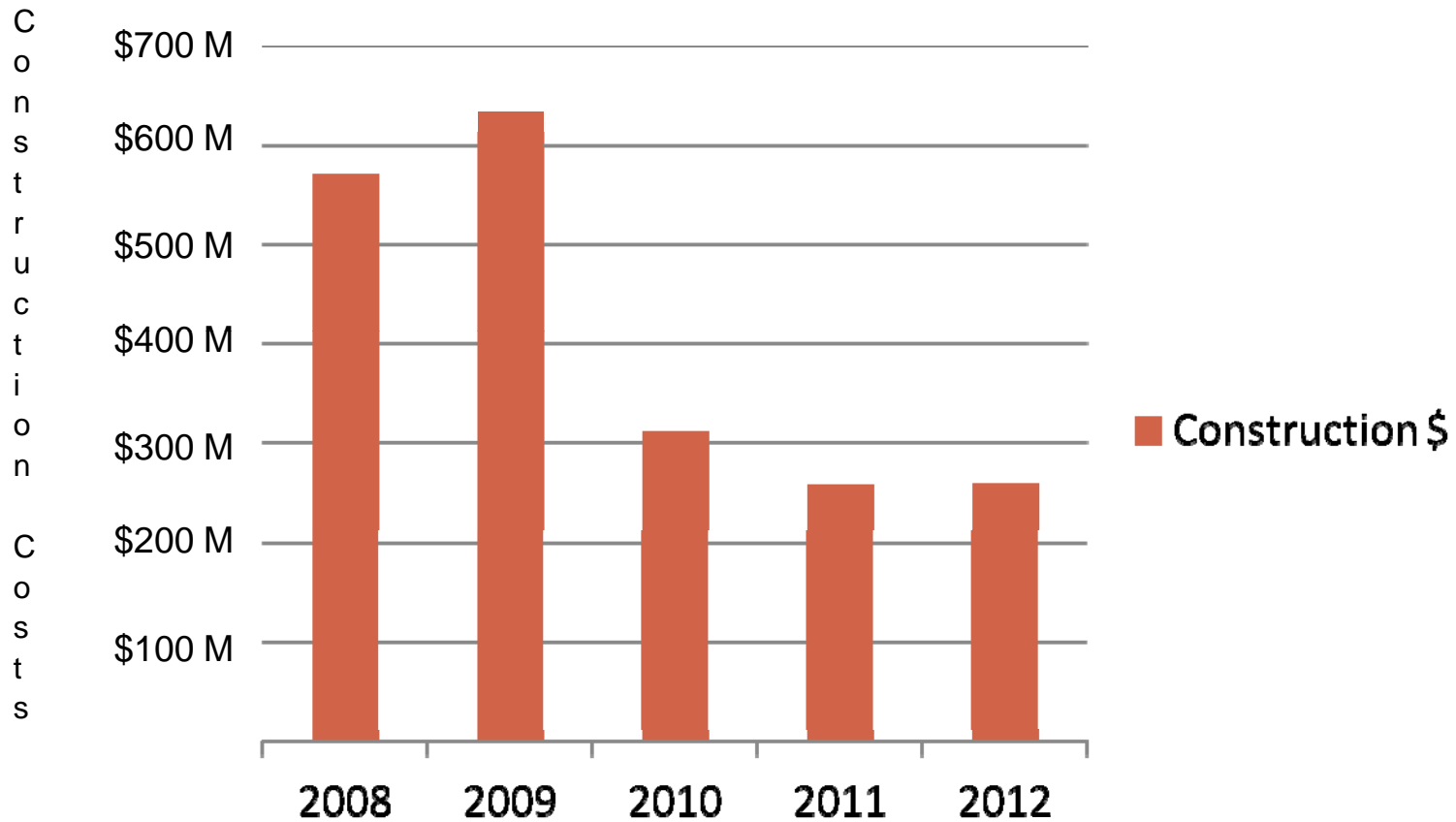
- Approval thresholds changed
- \$0-2M Local School Board approval
- \$2M-10M Petition remonstrance process
- \$10M+ Referendum

\*A capital project of \$2 million or greater

## Indiana School District Referenda History



## Construction \$ Placed on Ballot, per year





# ZIONSVILLE COMMUNITY SCHOOLS – SUBURBAN VILLAGE



## ■ Zionsville Community Schools

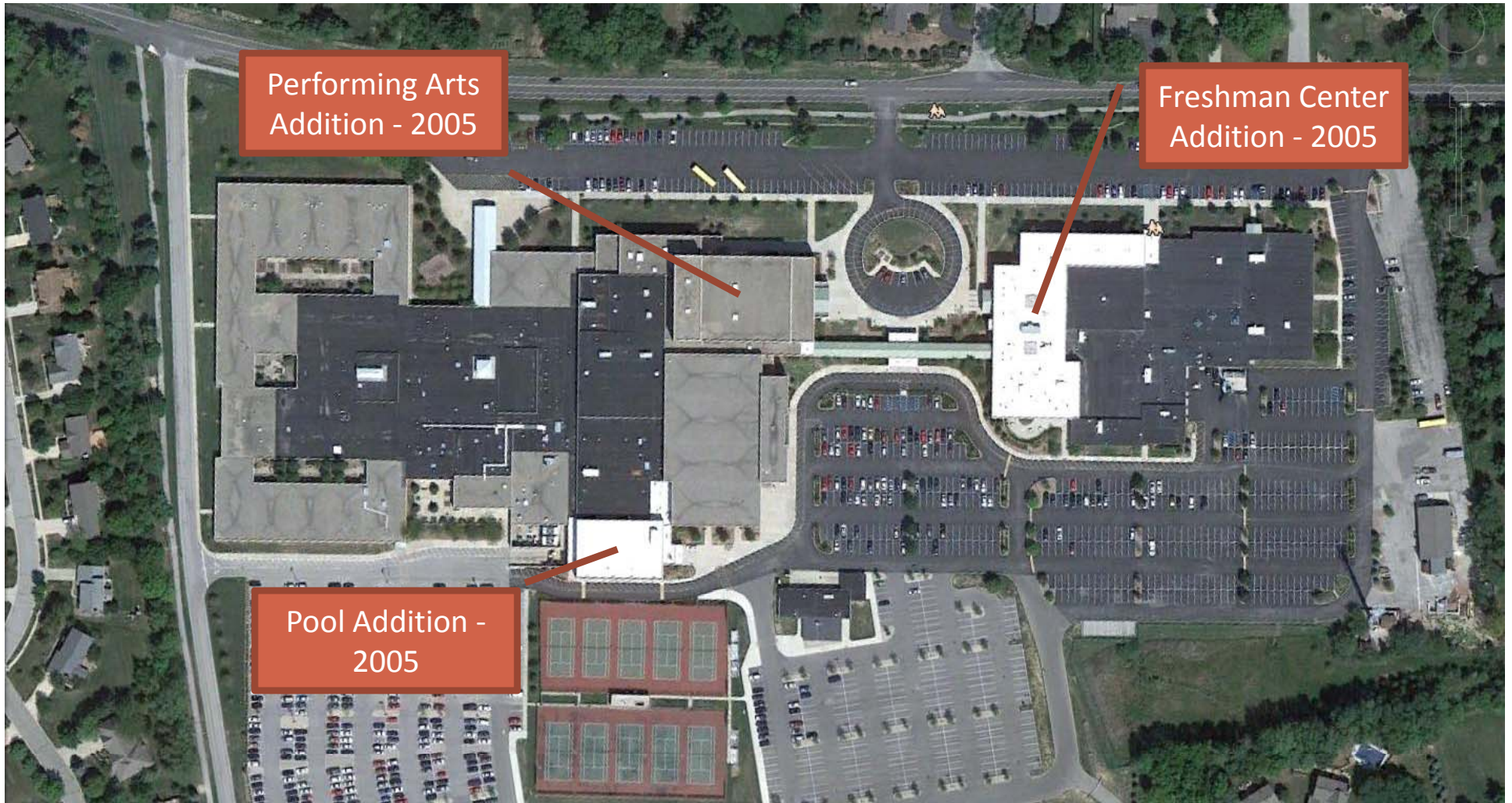
- Affluent suburban community on northwest side of Indianapolis
- 5,664 students
- 8 schools

### Challenges

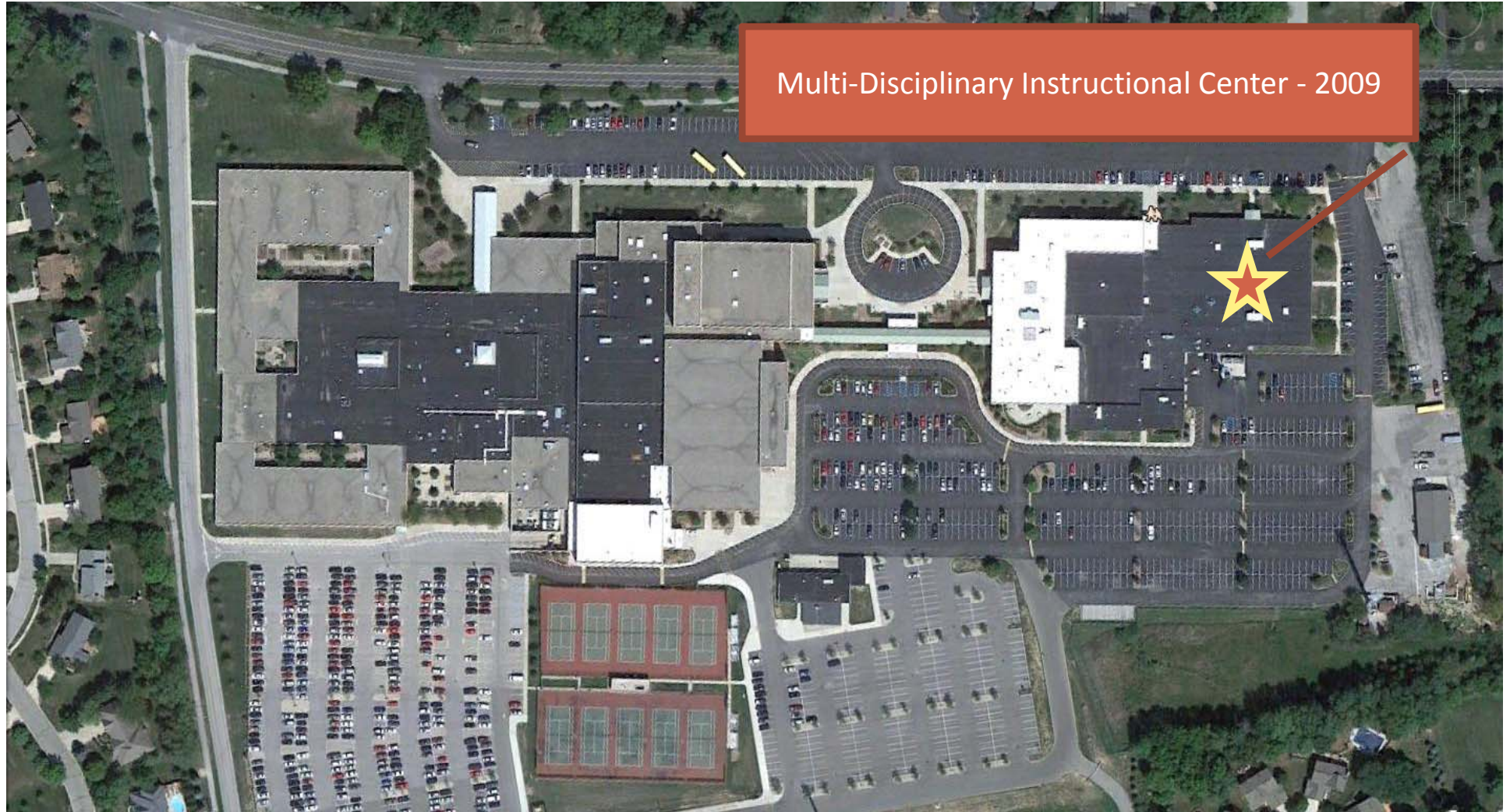
- Reduced state funding
- High school site restrictions
  - Growing student enrollment
  - Restricted site access – 49 acres
- High debt to assessed value ratio
- Supporting the changing needs of high academic achievers



## 2005 expansion of Zionsville High School



## 2009 renovations for project-based learning



Multi-Disciplinary Instructional Center - 2009

## Adaptive reuse of existing warehouse space



## Project-based curriculum with teacher as “guide at the side”



ZIONSVILLE COMMUNITY SCHOOLS – SUBURBAN VILLAGE



# ZIONSVILLE COMMUNITY SCHOOLS – SUBURBAN VILLAGE

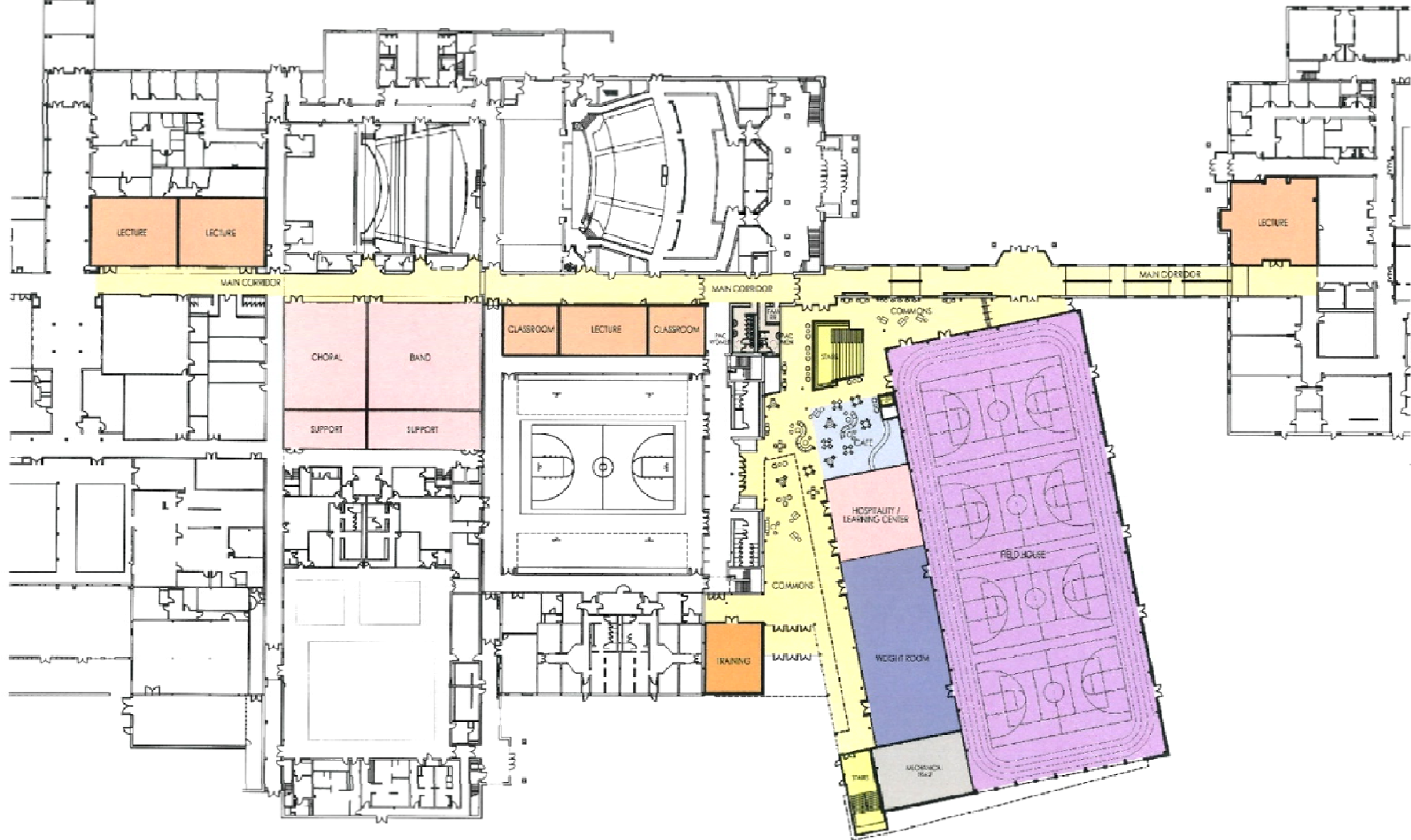




# Campus Master Plan



**Collaborative Learning Commons- to be completed in 2015**



ZIONSVILLE COMMUNITY SCHOOLS – SUBURBAN VILLAGE



# MSD OF PIKE TOWNSHIP – URBAN CENTER



## ■ MSD of Pike Township

- Urban community located on west side of Indianapolis
- Large industrial base
- 11,074 students
- 13 schools

### Challenges

- Address needs of a diverse population
- Provide for wide variety of learning styles
- Find ways to update aging facilities economically
- Minimize disruptions of programs during renovation

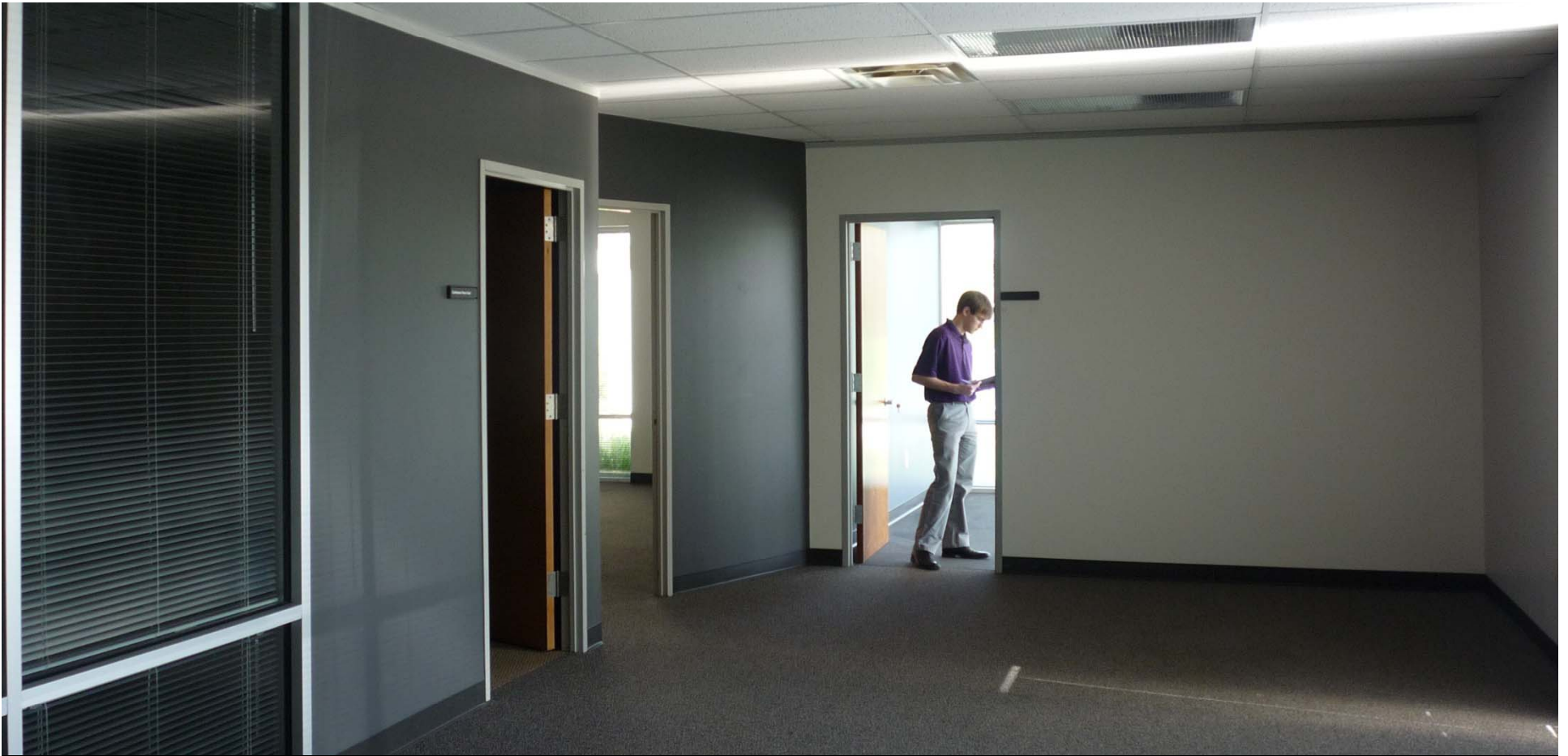


**“We want to create alternative education environments where students have a ‘college-going mindset’.”**

**-Nathanial Jones, Superintendent**



## Speculative office building is converted to an alternative education center

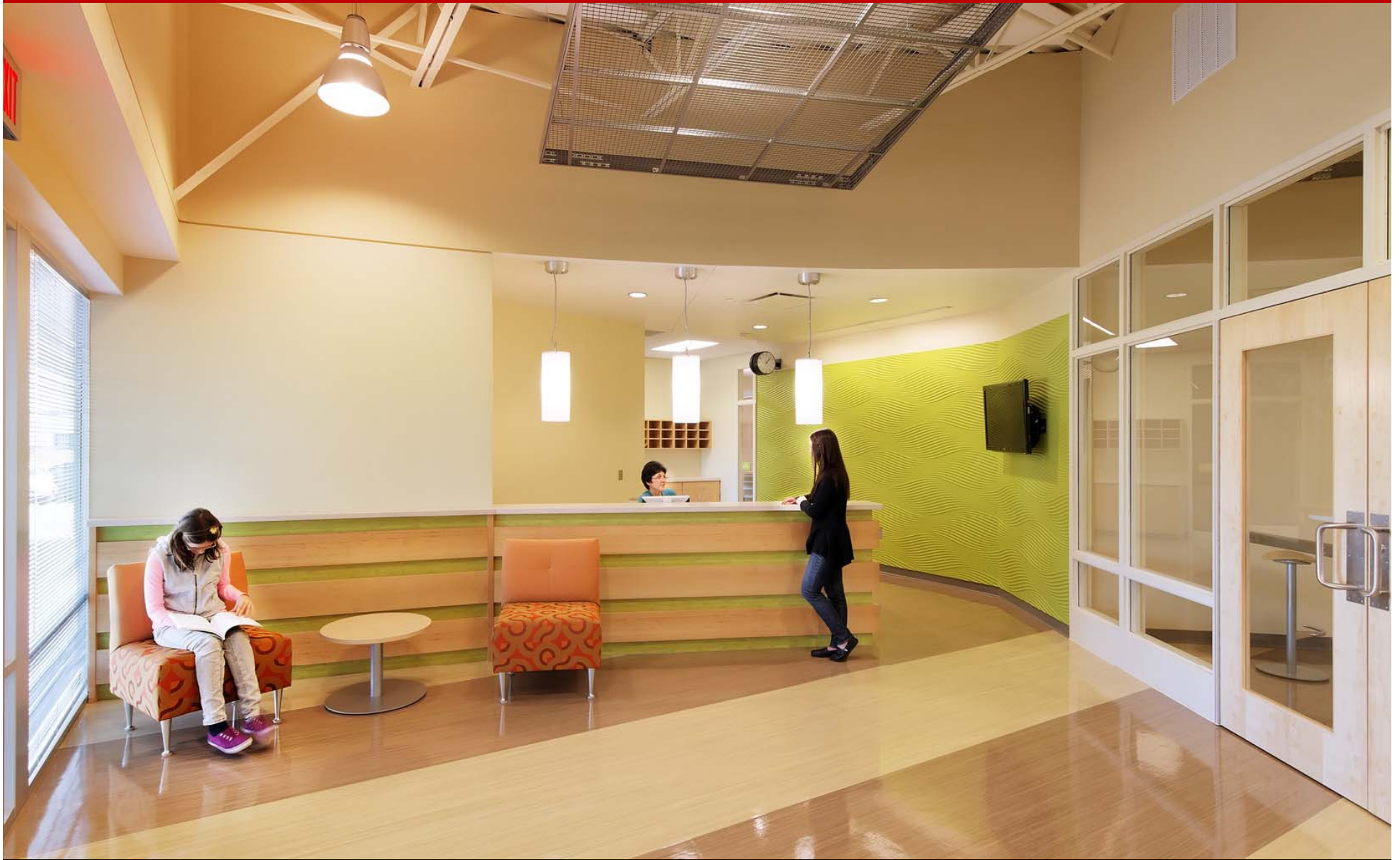


# Flexible learning environment





MSD OF PIKE TOWNSHIP – URBAN CENTER



MSD OF PIKE TOWNSHIP – URBAN CENTER



MSD OF PIKE TOWNSHIP – URBAN CENTER



## Current projects



College Park Elementary School Renovation and Expansion

## Current projects



Eagle Creek Elementary School Renovation and Expansion

## Current projects



# SCHOOL CITY OF HAMMOND – POST-INDUSTRIAL CITY



## ■ School City of Hammond

- Urban community located in Chicagoland area
- Former center of manufacturing
- 14,332 students
- 21 schools

### Challenges

- Demonstrate what 21<sup>st</sup> century learning space looks like
- Build support for new high school
- Move from lecture format classrooms to project-based learning



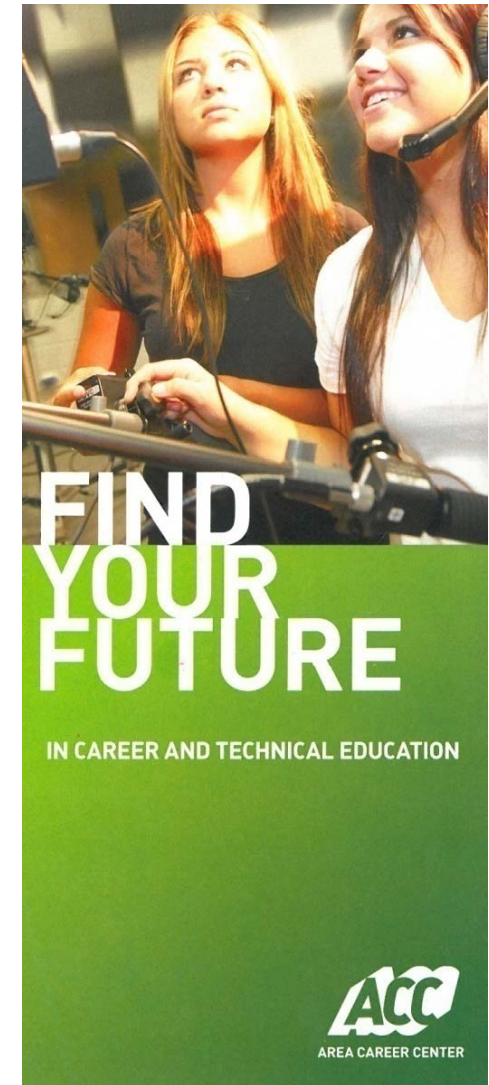


## Hammond Technical Vocational High School – circa 1950

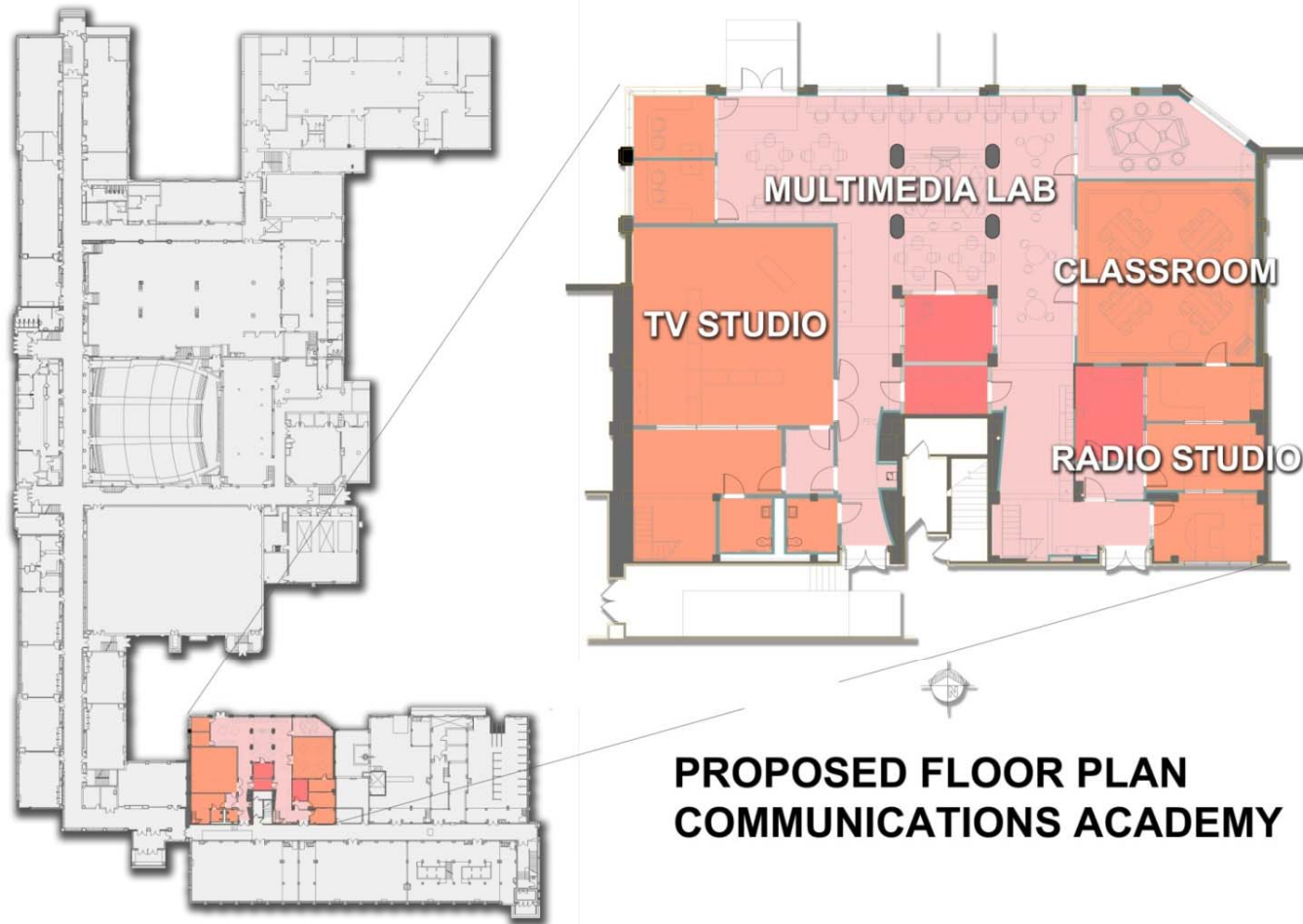


## Design Challenge:

- Create a 21<sup>st</sup> Century Learning Academy focused on multimedia, video, radio, sound, web design, animation, story telling, recording and editing.
- Break the mold of traditional learning spaces.
- Spend no more than \$1,999,999.
- Have it open by next school year.



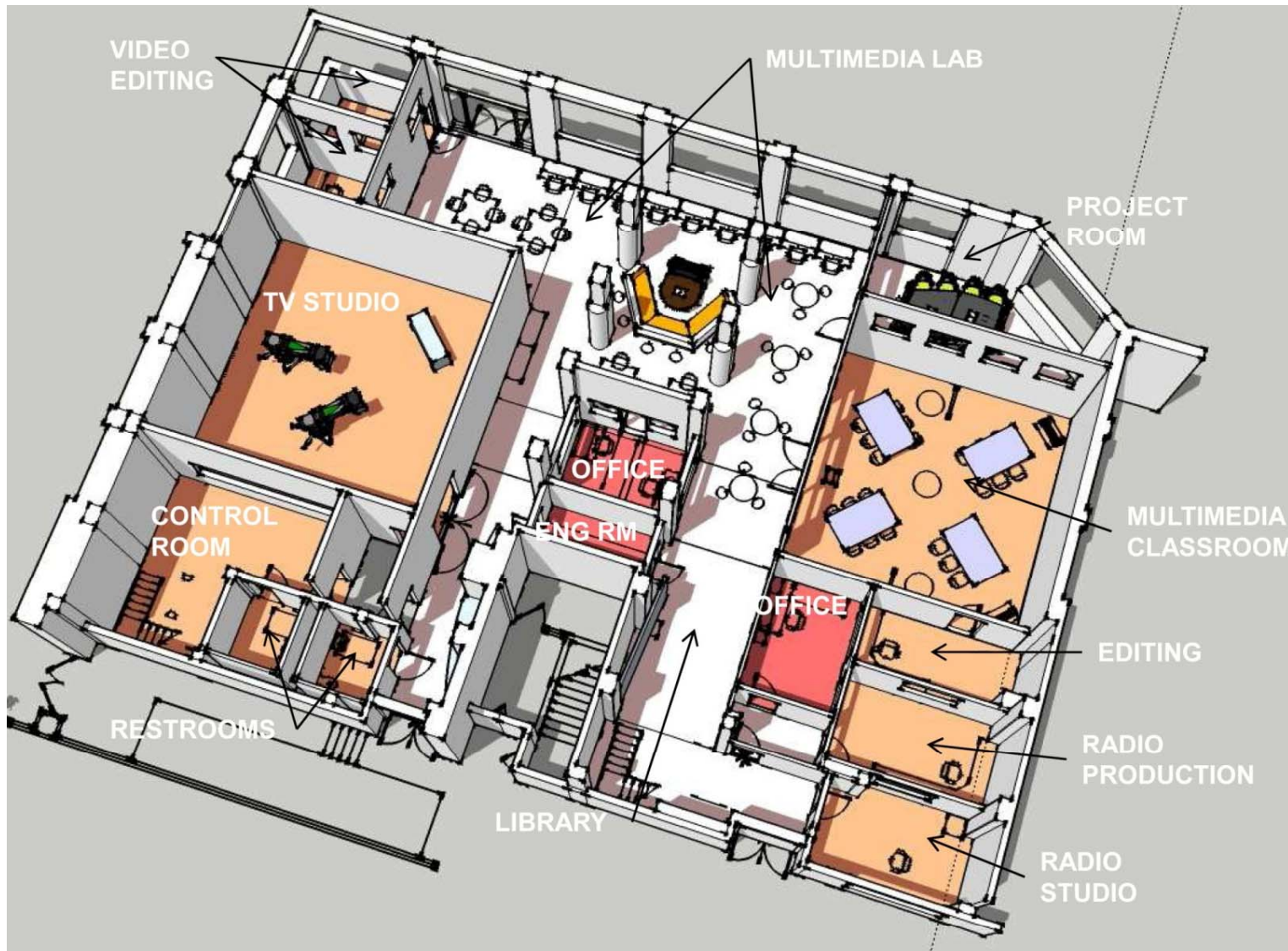
SCHOOL CITY OF HAMMOND – POST-INDUSTRIAL CITY



**AREA CAREER CENTER  
FLOOR PLAN**

**PROPOSED FLOOR PLAN  
COMMUNICATIONS ACADEMY**

# SCHOOL CITY OF HAMMOND – POST-INDUSTRIAL CITY



# SCHOOL CITY OF HAMMOND – POST-INDUSTRIAL CITY



SCHOOL CITY OF HAMMOND – POST-INDUSTRIAL CITY



# SCHOOL CITY OF HAMMOND – POST-INDUSTRIAL CITY



# NEW PRAIRIE UNITED SCHOOL CORP. – AGRICULTURAL COMMUNITY





## ■ New Prairie United School Corporation

- Agricultural community located east of Chicagoland area
- 2,785 students
- 5 schools

### Challenges

- Large enough to justify new building, but not large enough to have a dedicated space for every program
- Do so in a cost-effective way

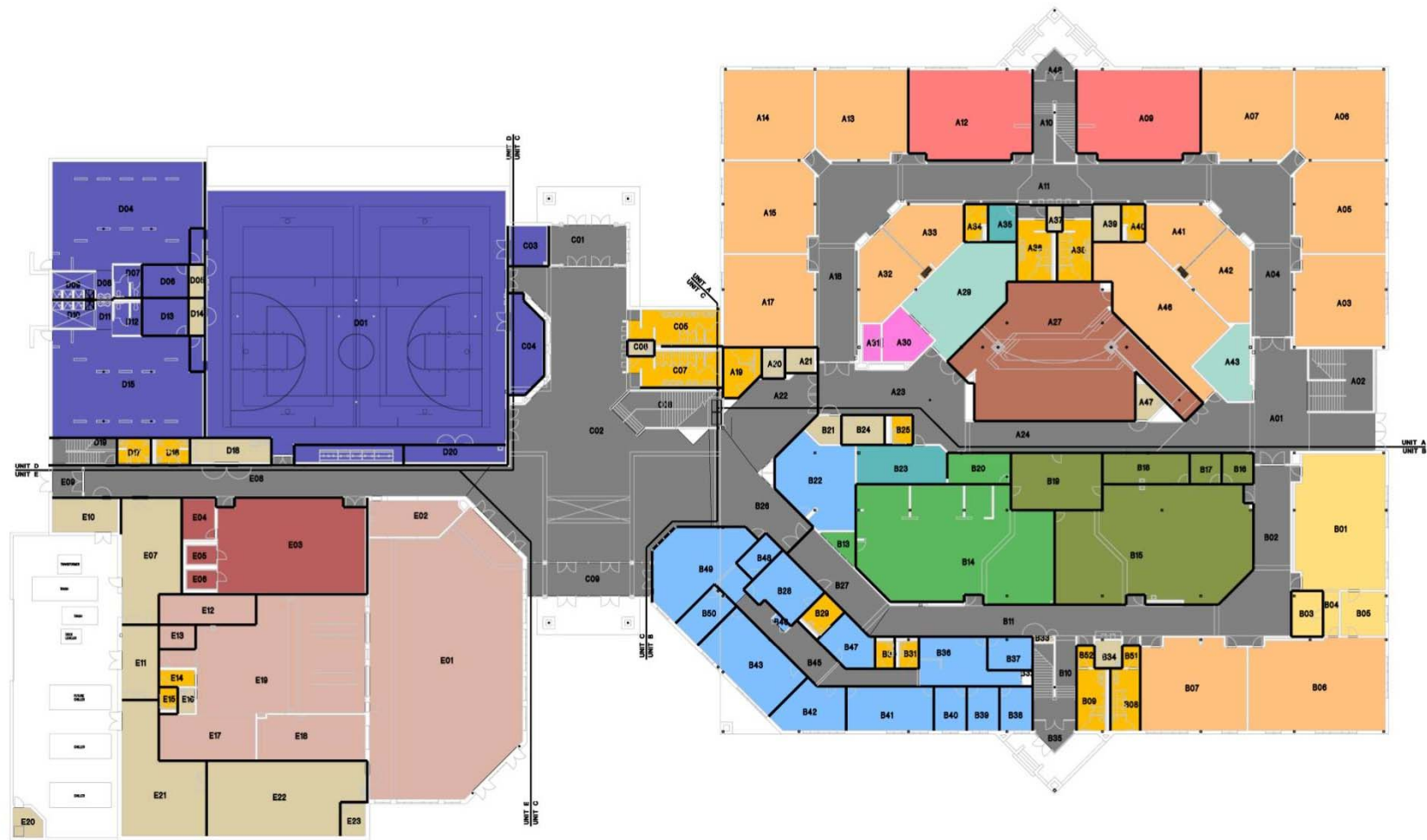


NEW PRAIRIE UNITED SCHOOL CORPORATION – AGRICULTURAL COMMUNITY

## New 21<sup>st</sup> Century Middle School, constructed in 2008



# Floor Plan



## Hybrid technology labs using “station rotation” method of technology integration to increase flexibility



## Classrooms shared between teachers and subjects in the grade level teams



# Large group instruction area with telescoping seating is used by choir classes and for events like science fair



## Gym has folder stage to support large assemblies, while minimizing floor area lost



## LESSONS LEARNED

- Reduction in school construction funding has led to an increased focus on strategic renovations
- More “thinking inside the box”, i.e. adaptive reuse
- Emphasis on project-based learning and high-tech instructional tools
- Incorporating flexibility to serve multiple programs and adapt to changing ones



QA