

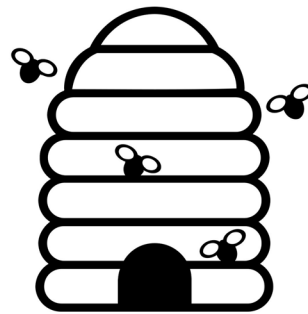


HIVE

Higher Innovative Valuable  
Education

LEARNING CENTER FOR ALL

# The Theme



We knew since the beginning of this project, that the t  
important idea to help guide our design. A design which  
incorporation of adapting environments which were en  
support learning in different ways.

## Objectives of Building

- A building that expresses individual learning styles
- Achieving a better place to learn where education is an individual and a group
- A green building that's friendly to the environment
- Guarantee and provide safety to students
- Communal incorporation to create learning and i community



## Poll of the Students/faculty Responses

**66.7%**

wanted comfortable seating

**61.7%**

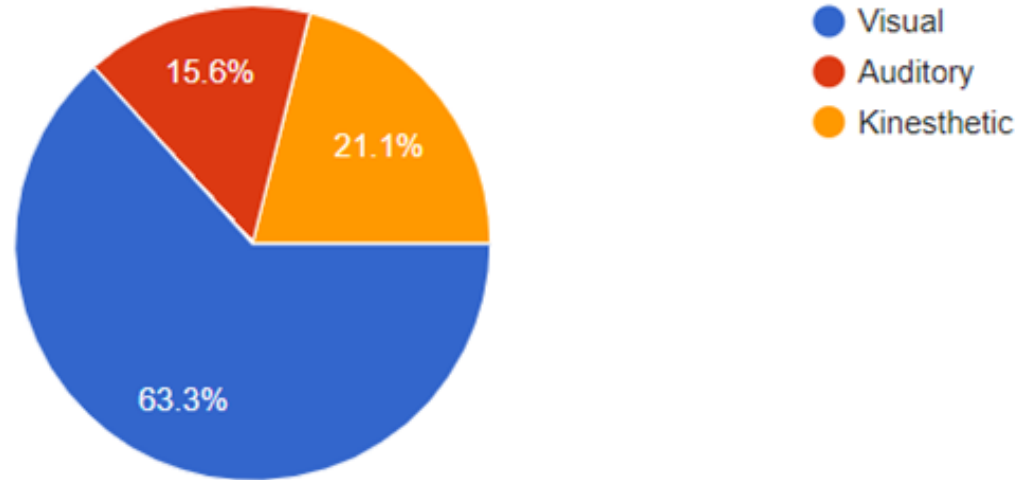
wanted natural sunlight

**42.1%**

Wanted a quiet Environment

# Poll of the Students/faculty Responses

What type of learner are you?





Learn

Do

RETENTIO

Visual, Auditory, Kinesthetic

Teach

The background of the slide features a close-up, slightly angled view of a spiral-bound notebook. The pages are white with faint horizontal lines. A bright yellow highlighter bar is positioned horizontally across the upper portion of the notebook, partially obscuring the text. The spiral binding is visible on the left edge.

## Learn Do Teach

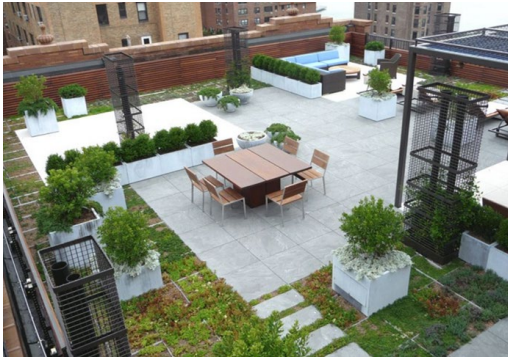
- Learning ~~will~~ allows students to be taught new concepts in their personal learning style
- Doing ~~will~~ allow students to apply their new concepts
- Teaching ~~will~~ encourage students to demonstrate their understanding which will increase retention



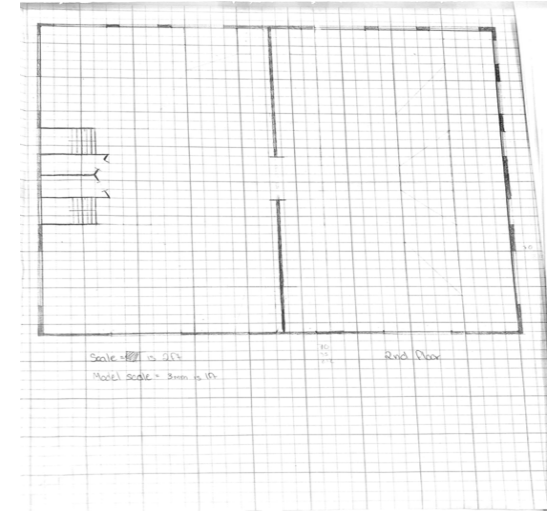
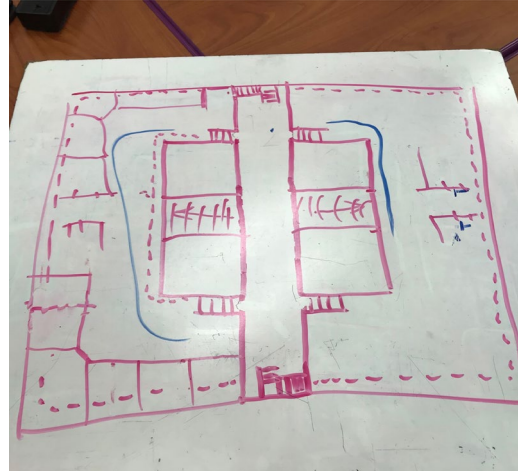
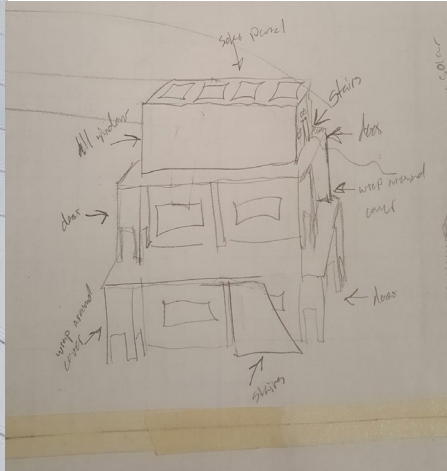




# Inspiration



# Process



# Project Site Plan



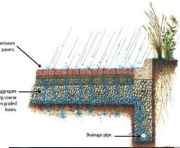
Rain Gardens



Native Plants



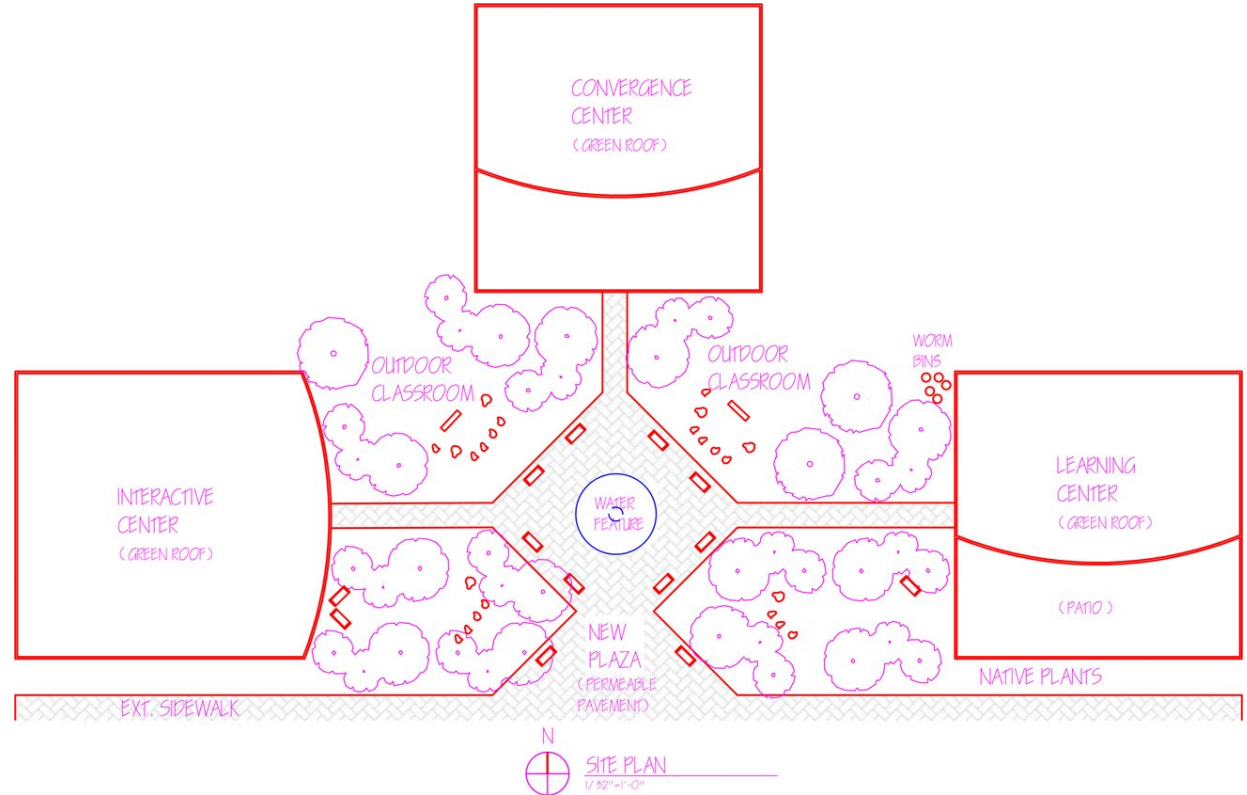
Permeable  
Pavement



LowE Glass

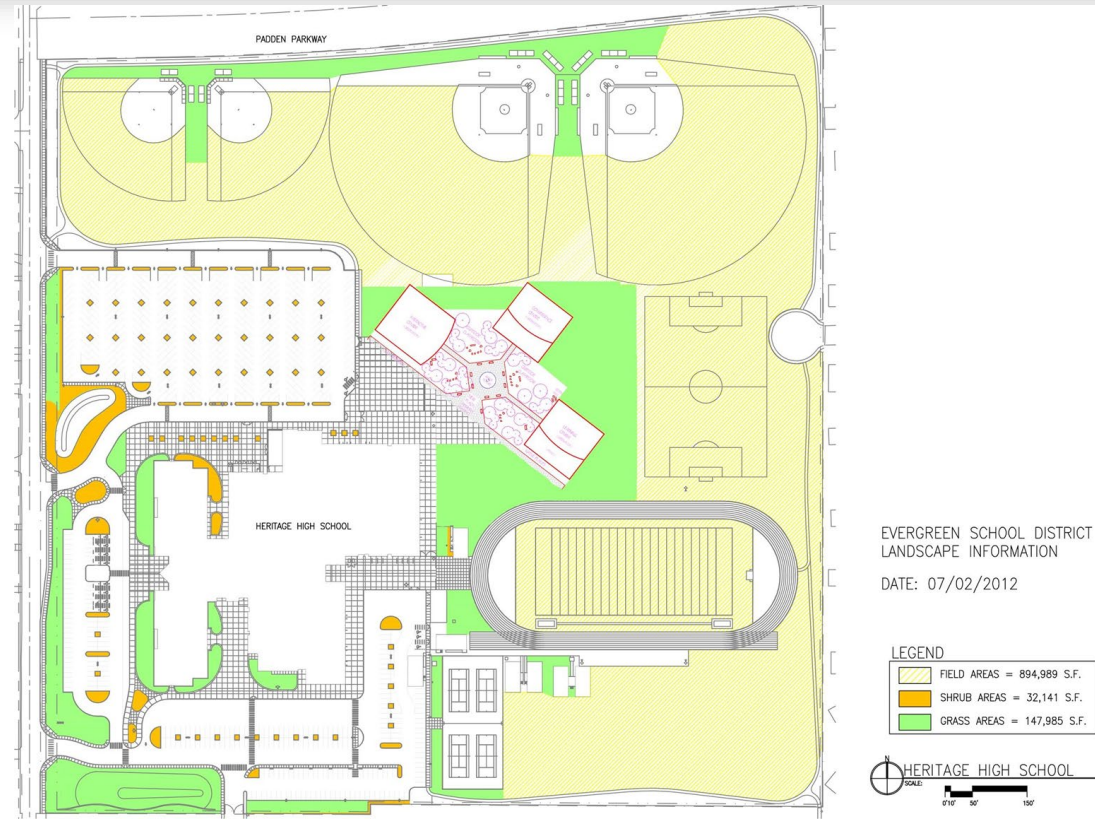


Green Roof





# Site Plan



## **VISUAL**

- **VIDEO PRESENTATION,  
SEEING, PICTURES**



## **KINESTETIC**

- **MOVEMENT AND HANDS  
ON**



## **AUDITORY**

- **HEARING, SPEAKING,  
VERBAL PRESENTATIONS**





# Classroom Kinesthetic

Within the classrooms Visual, Auditory, and Kinesthetic learning, will be important to retention

- Kinesthetic learners need open spaced classrooms with movable items
- Flexible spaces
- Cabinets for storing projects
- Comfortable and movable seating



# ClassroomVisual

- Visual learners need neatly organized classrooms with easy viewing spaces
- Plenty of white boards
- Windows



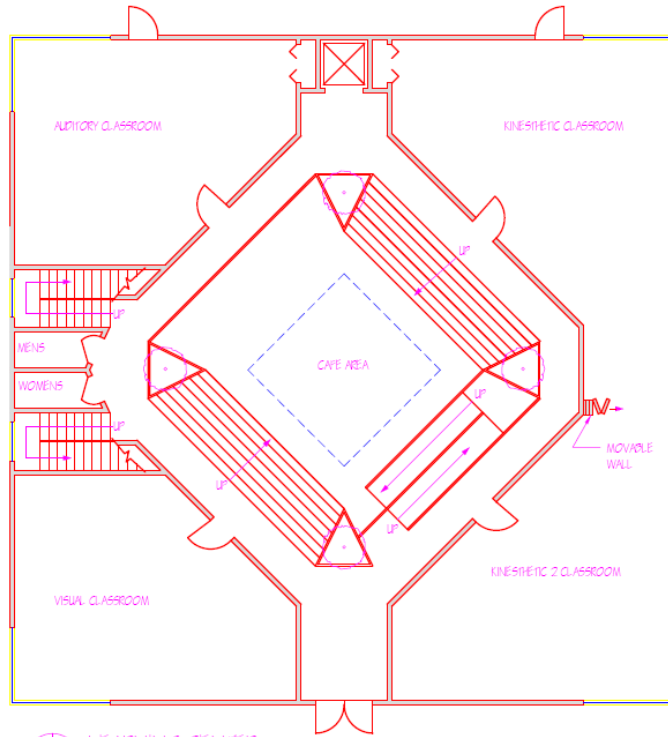
# ClassroomAuditory



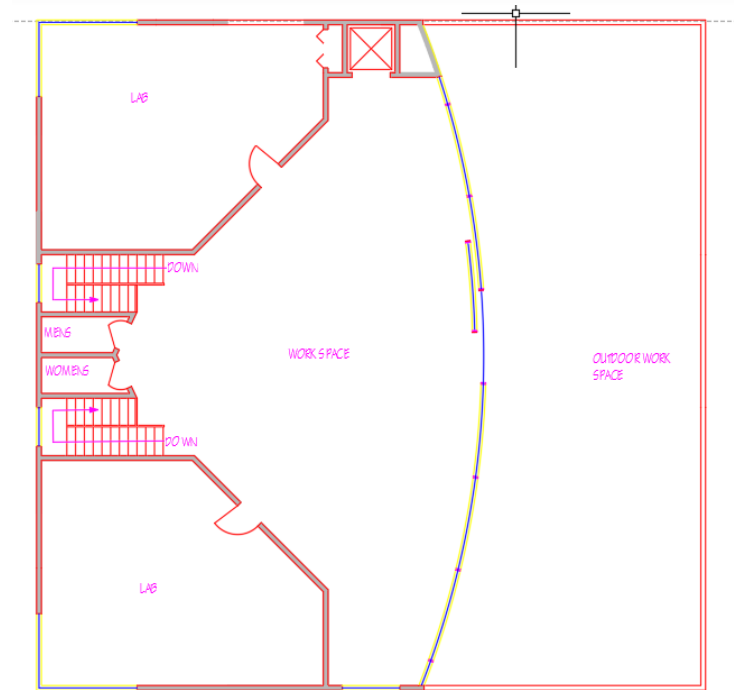
- Auditory learners need open space with good audio on computers and interact.
- Movable organic furniture and space allows grouping
- To have the best retention possible, it is important to allow the students to learn the best way possible while also challenging them to explore new possibilities.

# Learning Center (Building 1)

Learn



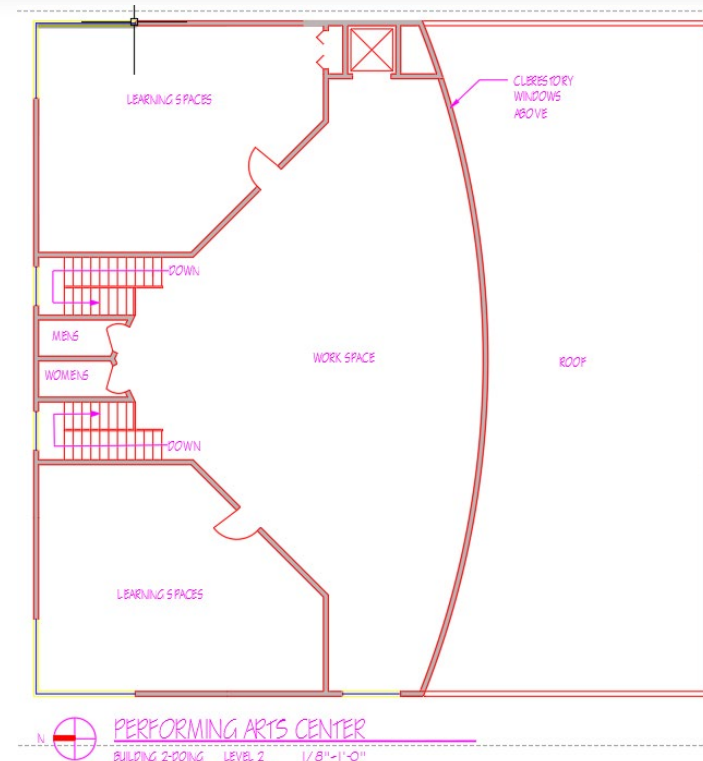
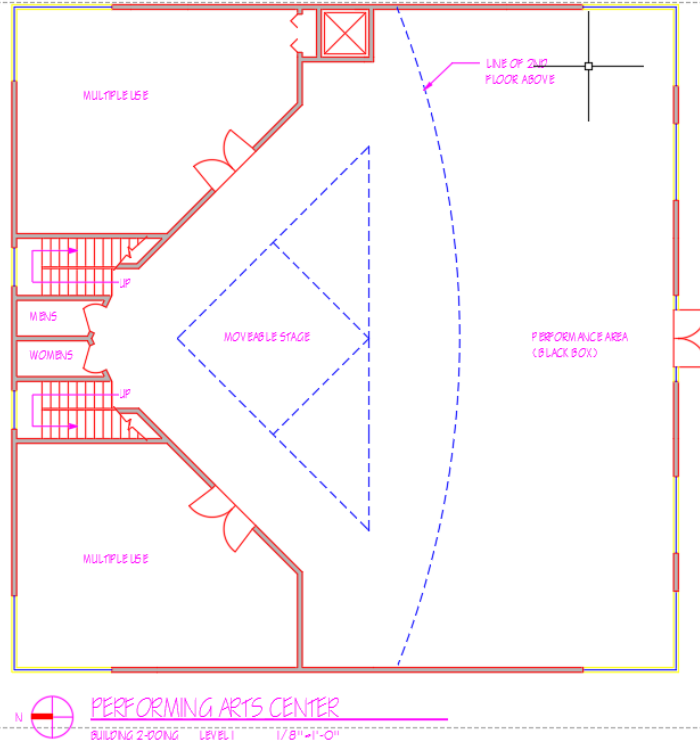
 **LEARNING CENTER**  
BUILDING-LEARNING LEVEL 1 1/8"=1'-0"



 **LEARNING CENTER**  
BUILDING-LEARNING LEVEL 2 1/8"=1'-0"

# Convergence Center (Building 2)

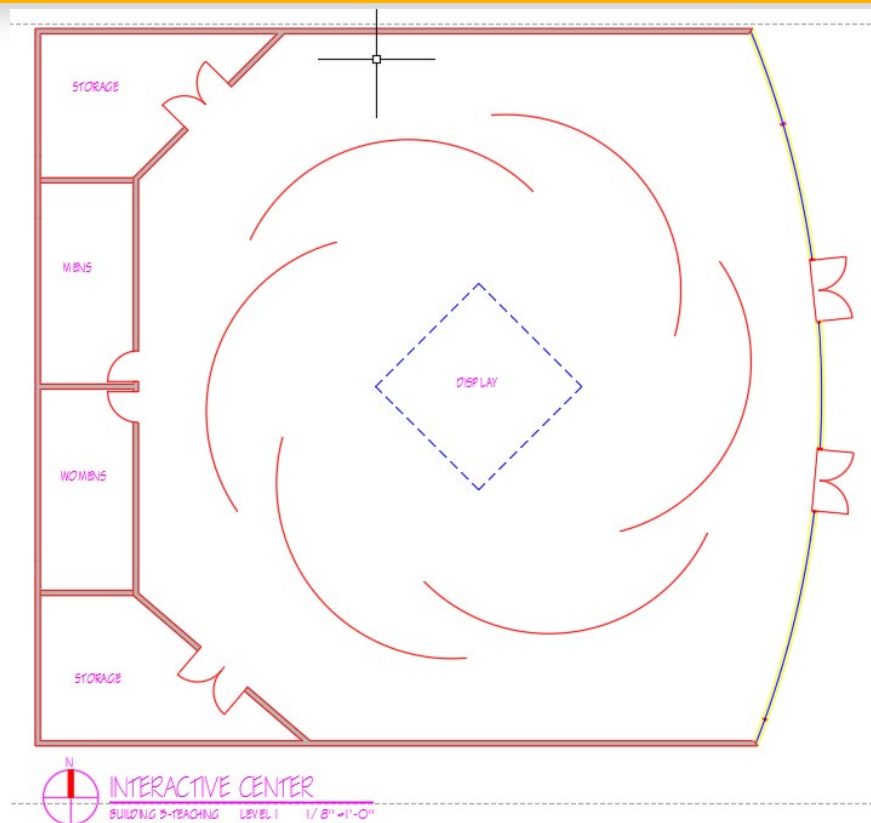
Do



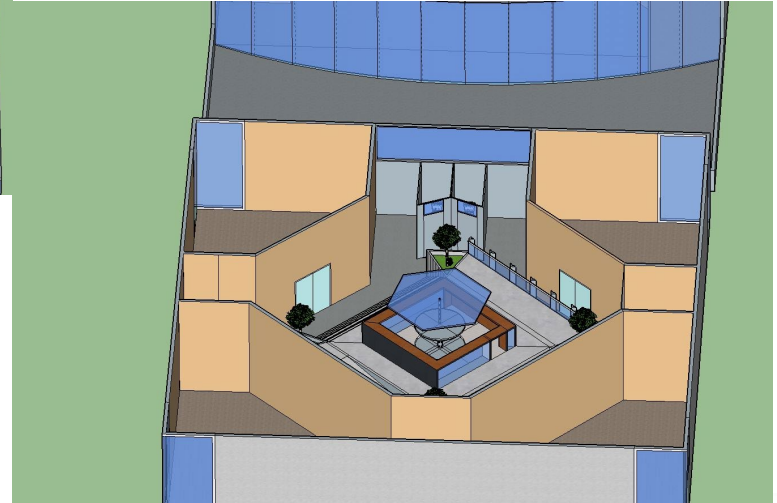
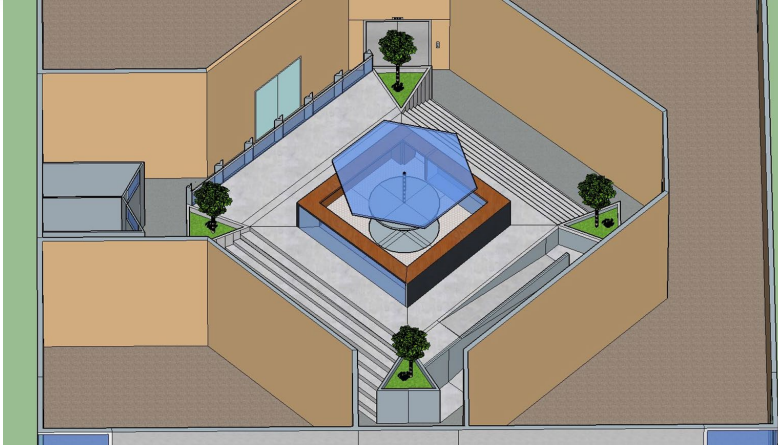


# Interactive Center (Building 3)

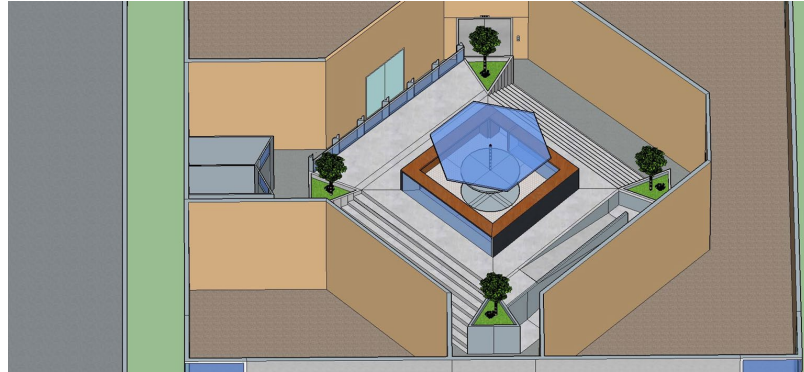
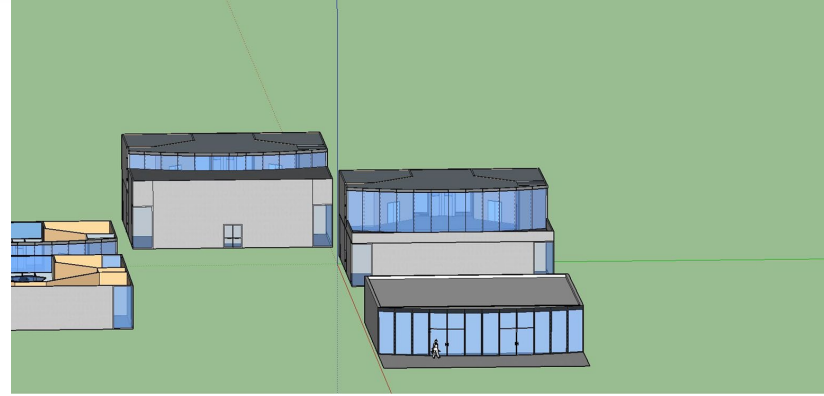
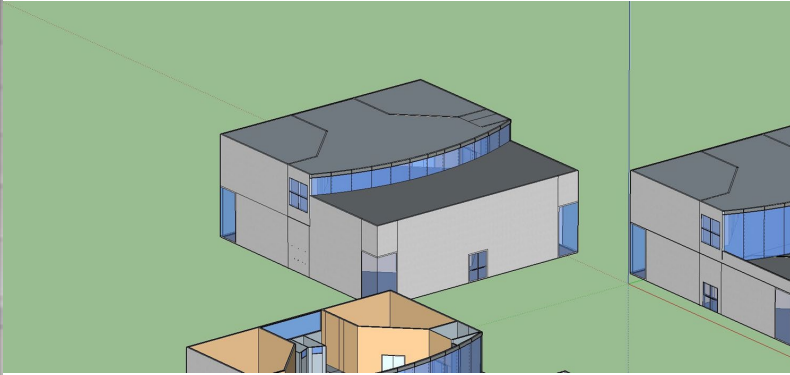
Teach



# HIVE cafe



# SketchUp



# Building



All building materials will be supplied within 100 miles

Carpet



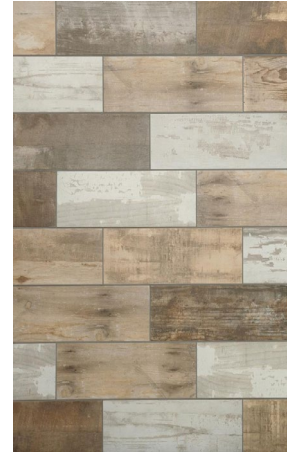
Wood



Concrete



Tile



Low VOC paint



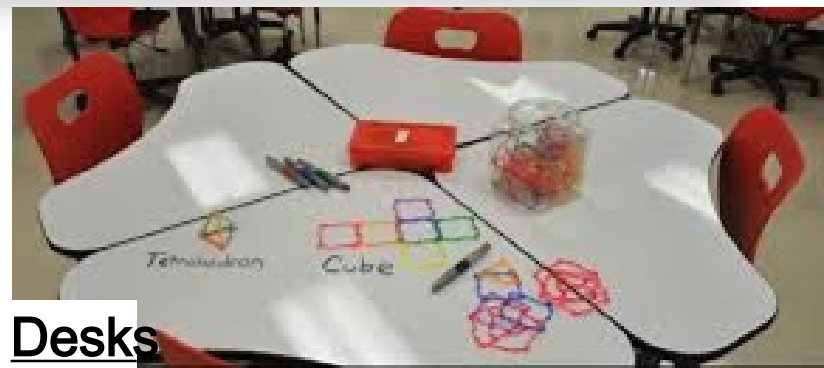
Flooring

Wall

# Classroom/Study Center



LED  
Lights



Desks



Comfortable  
Chairs



Bamboo  
Chairs





**THANK YOU FOR LISTEN**  
Any questions?

