

The Grove Community Center





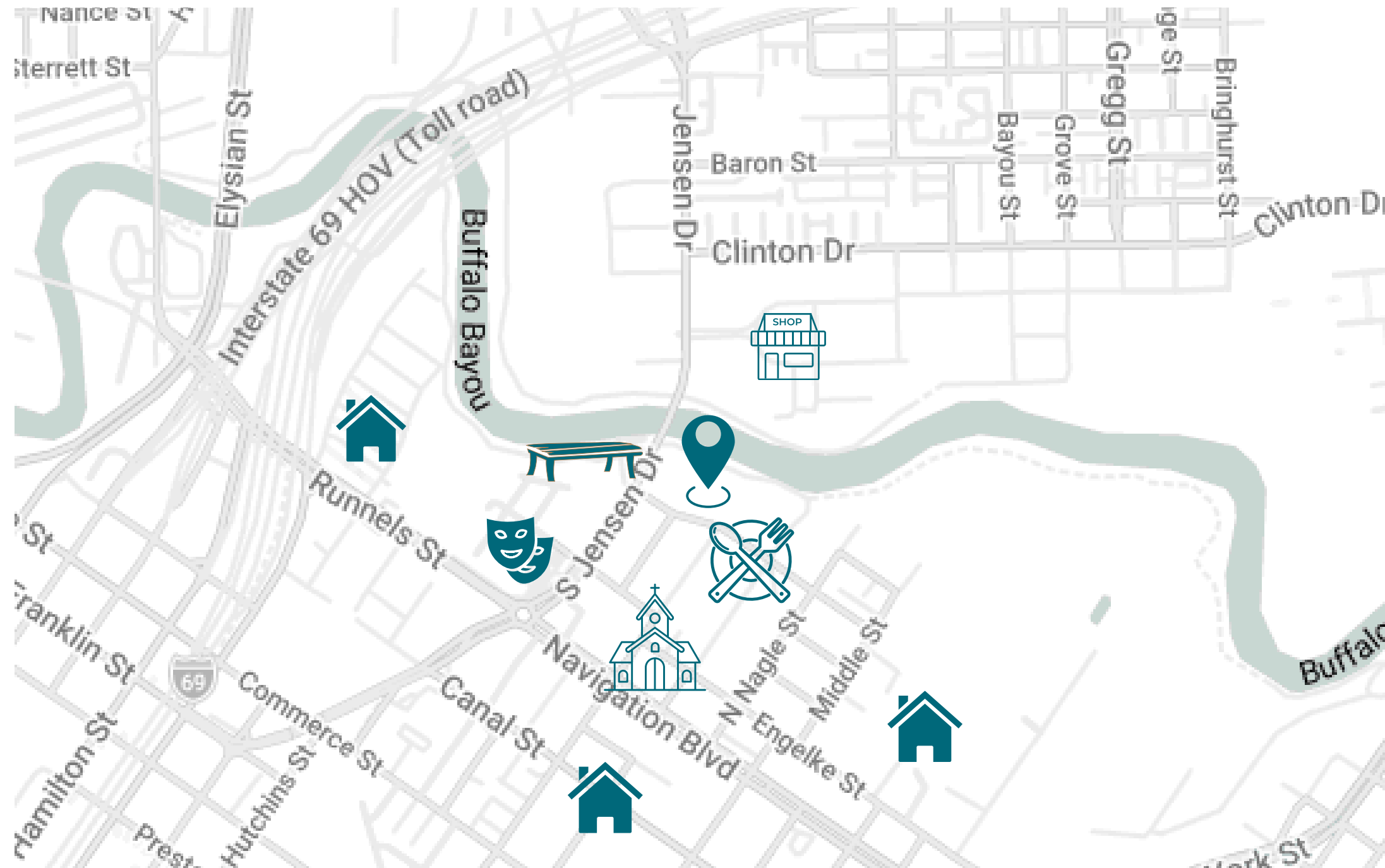
Rooted in Houston's historic and culturally rich Second Ward, The Grove Community Center weaves together the neighborhood's industrial past and identity with a dynamic, sustainable future. Designed to serve every age, from the bayou biker to the neighborhood children.

The Grove Community Center resolves the challenge of scale by organizing the Sports Complex, Library, and Educational Hub around a central, unifying courtyard. This warm, inviting complex utilizes natural materials and abundant natural light to create a sense of belonging, instantly invoking a powerful sense of place. The true impact lies in the layered response to the site.

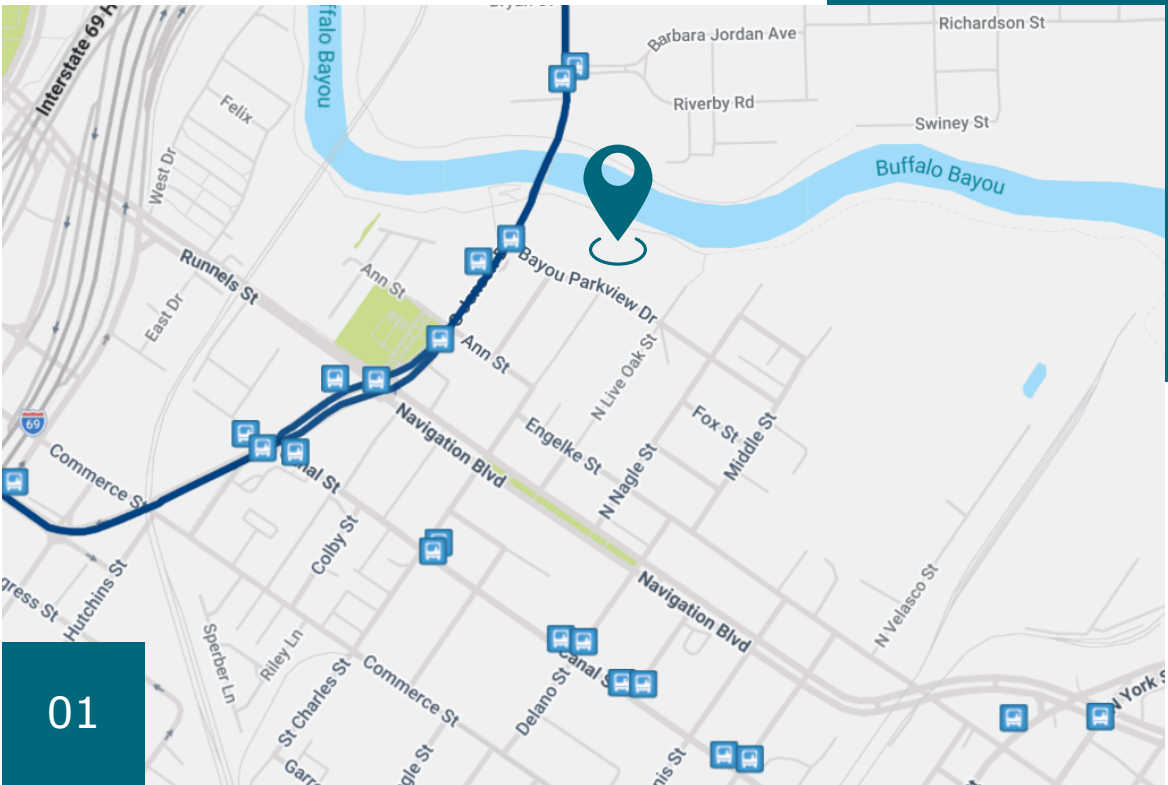
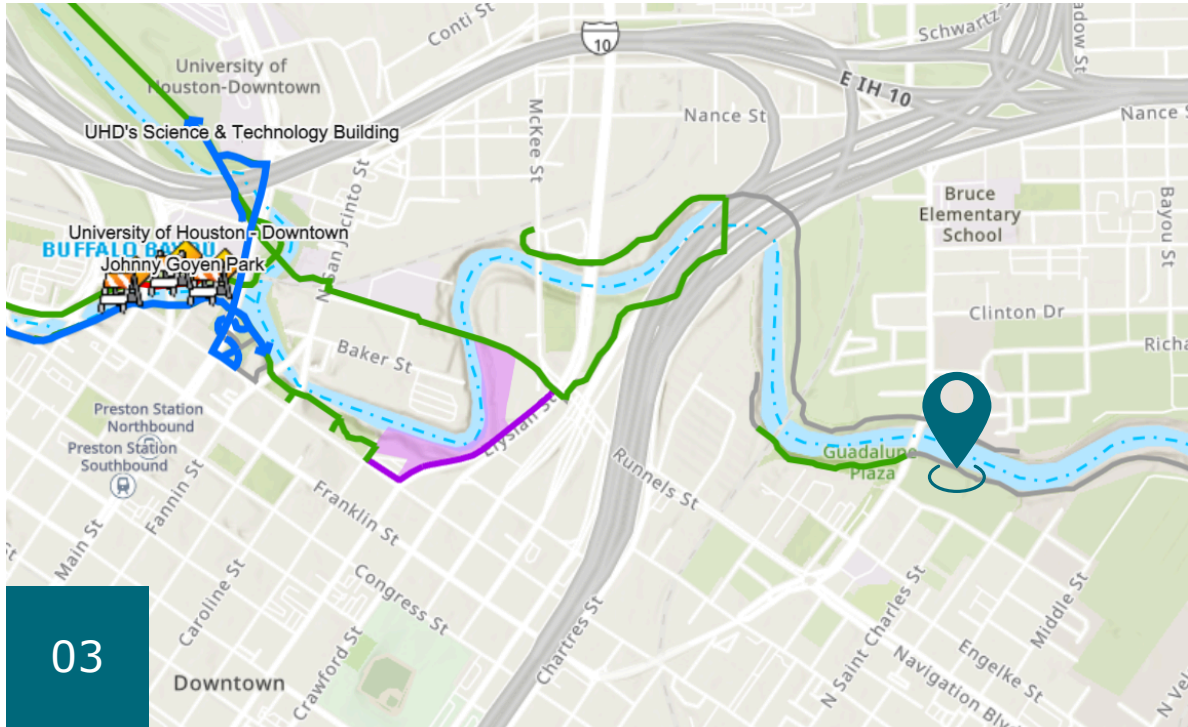
The Grove transforms the edge of the Buffalo Bayou trail into a tiered public realm. The lower level offers an open sanctuary for trail walkers and a space to relax while ascending layers reveal the grove and a gardening space for hands-on learning. This layering physically connects those passing by with the residents' daily life, drawing the community inward.

ABOUT THE GROVE

COMMUNITY ENVIRONMENT: CONNECTING TO THE SECOND WARD



SITE & CONTEXT



01

By integrating with existing infrastructure and services, the center acts as a beacon of accessibility, supporting the re-emergence of the Second Ward.

02

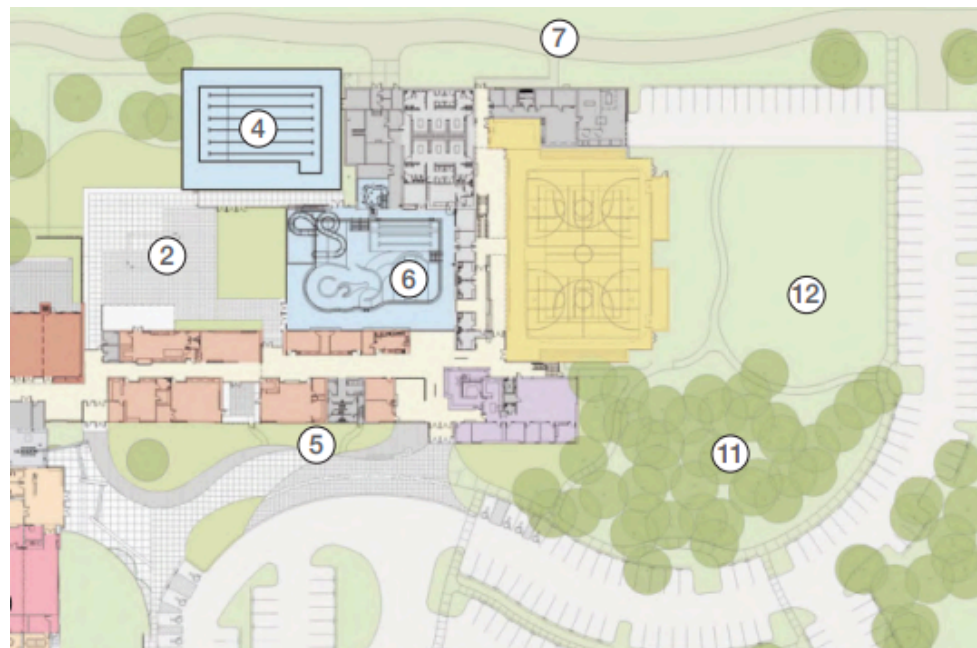
The project transforms the edge of the Buffalo Bayou trail into a tiered public realm that invites the community inward.

INSPIRATION



Joyful Community- Shanghai China

The community center promotes public life through flexible spaces that adapt to different cultural activities. Its horizontal form reaches out toward the city, creating an inside-out experience that blurs the boundary between building and street. This design invites both local residents and urban visitors to gather and connect in a shared, welcoming environment.



Firstenberg Community Center- Vancouver, WA

The project encourages alternative transportation by integrating a bus stop and shelter, providing generous bike parking and carpool spaces, and creating pedestrian links to the adjacent park and future regional trail. The building's footprint and placement result from analyzing healthy tree areas, solar orientation, prevailing winds, street noise, and program needs, ensuring both environmental sensitivity and user comfort.

COLLABORATION WITH END USERS



01

I spoke with friends who grew up attending my local community center to understand how its programs and environment shaped their development. Their experiences helped me identify which activities, supports, and spaces had the greatest impact. This feedback directly influenced the types of programs I chose to include in my K-12 design, ensuring they reflect real community needs and meaningful youth experiences.

02

I collaborated with parents to understand how their experiences shaped their learning. In particular, my mother's story, taking language classes at the community center and finding both support and belonging influenced how I integrated meaningful activities for adults into the program.

VISION & PLANNING:

01

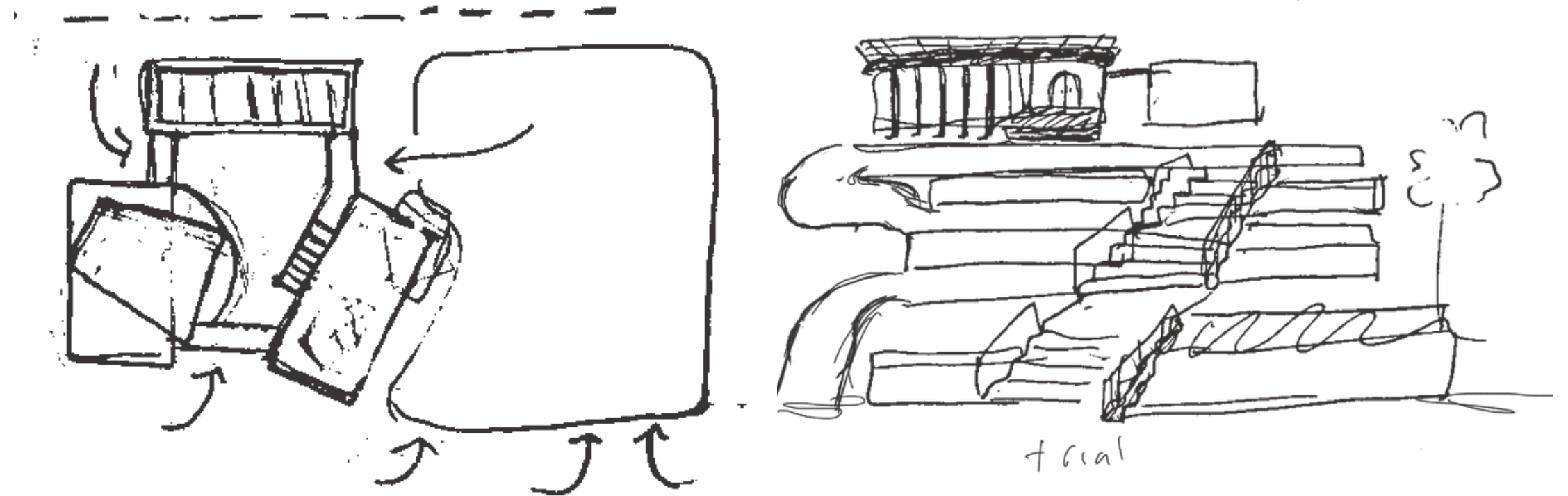
The Concept of "Nurture"

The project is centered on the word "nurture," focusing on how environment, care, and education shape an individual's development.

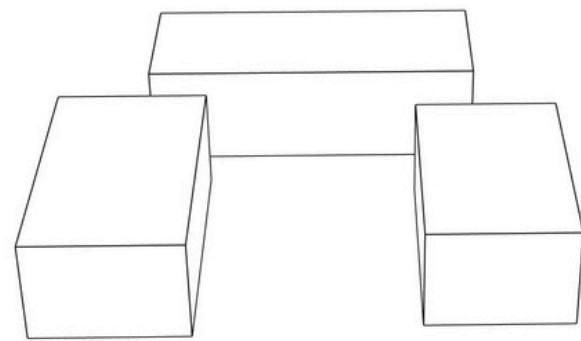
02

Audience

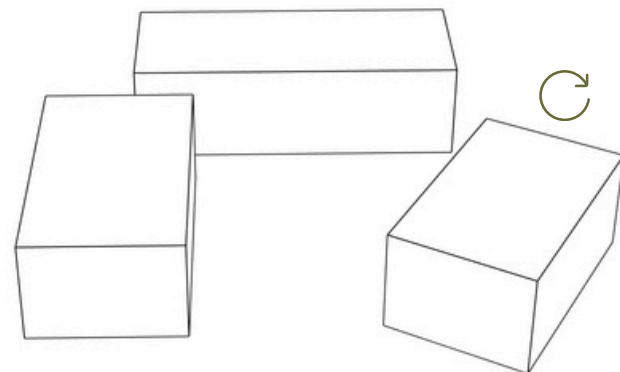
The need for a space that serves a multi-generational demographic, including "bayou bikers," neighborhood children, adults, and the elderly.



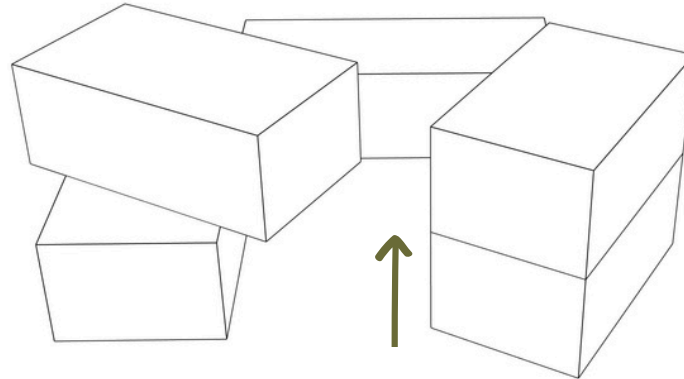
PART I
1



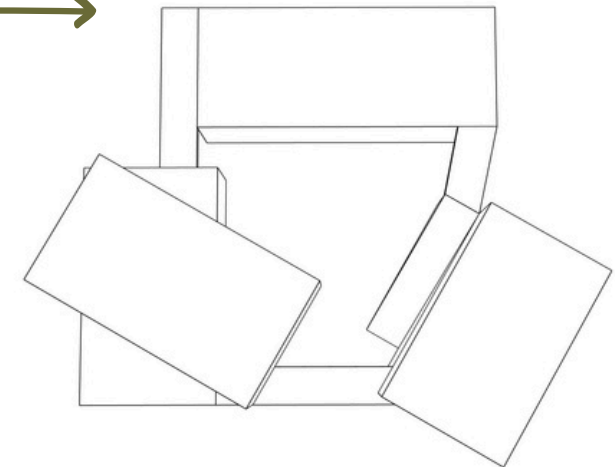
PART I
2



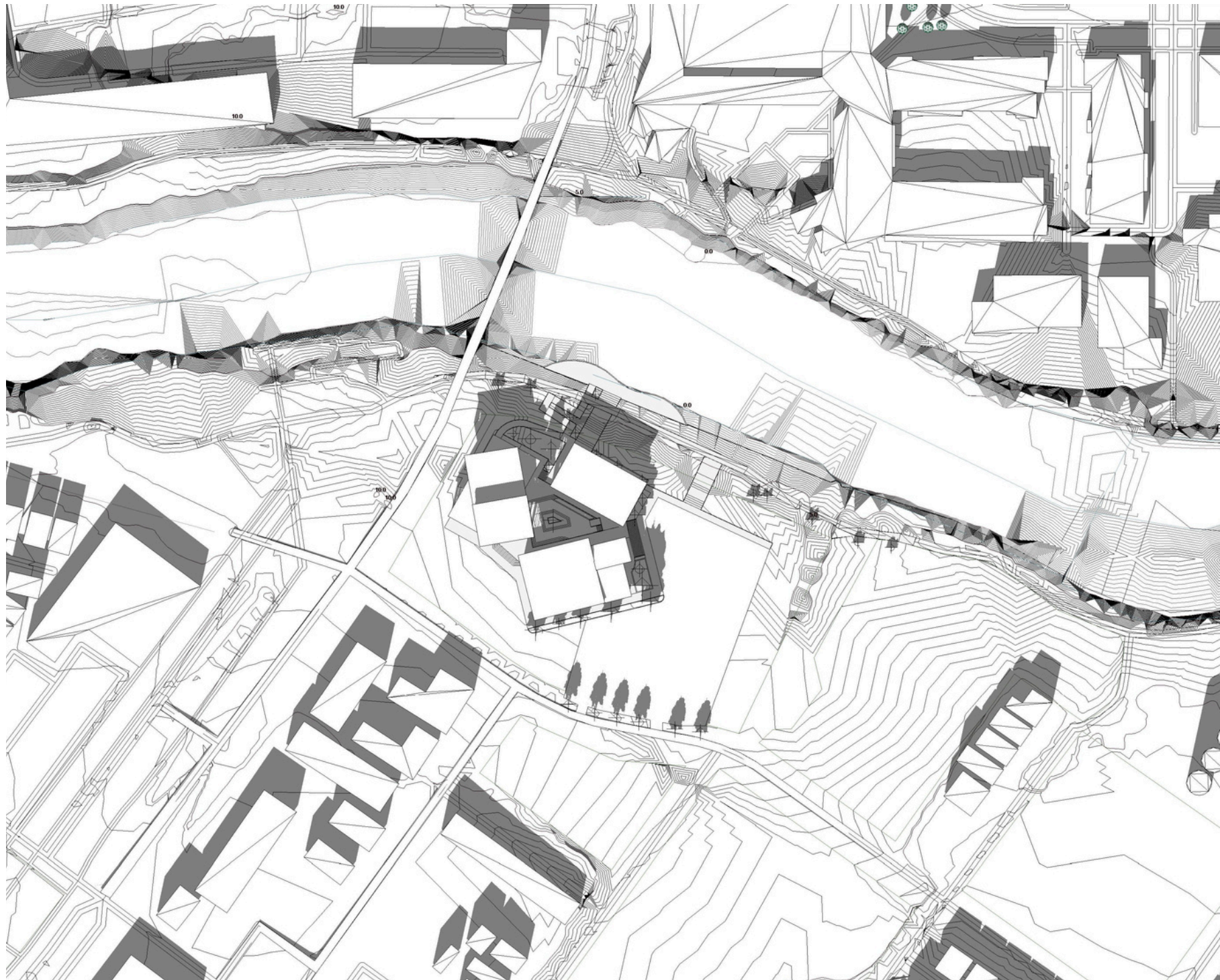
PART I
3



PART I
4



DESIGN TO EXISTING SITE



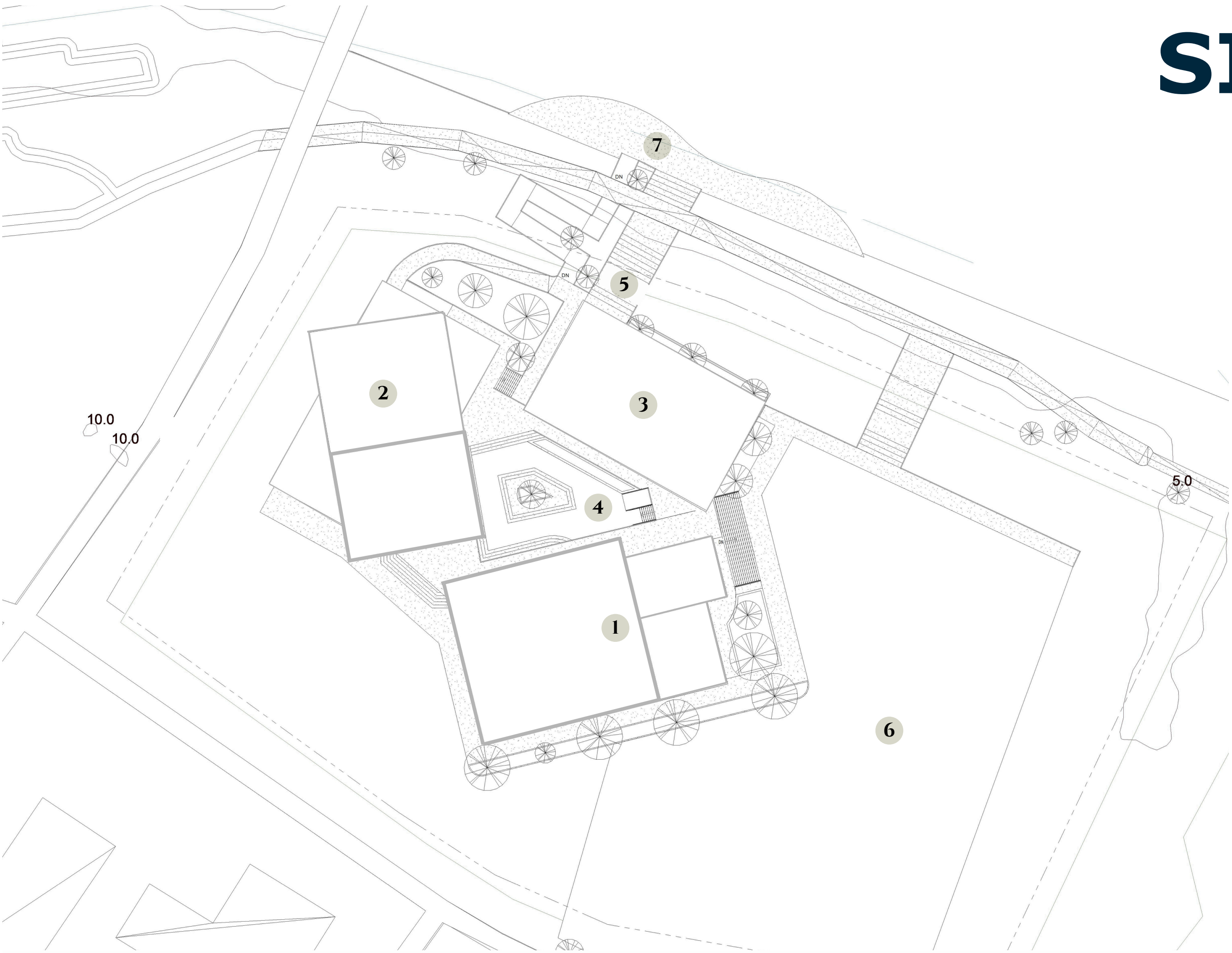
01

The site's steep topography strongly influenced the layout, guiding the buildings to follow the natural slope of the land. This approach creates a design that feels grounded in the landscape and responds directly to its terrain.

02

Following the natural slope is both economical and environmentally responsible. It reduces the need for major excavation and retaining walls, while helping prevent issues like erosion, drainage disruption, and habitat loss.

SITE PLAN



- 1 Sports Complex
- 2 Educational Hub
- 3 Library
- 4 Courtyard
- 5 Trail to Bayou
- 6 Parking Lot
- 7 Bayou Observation

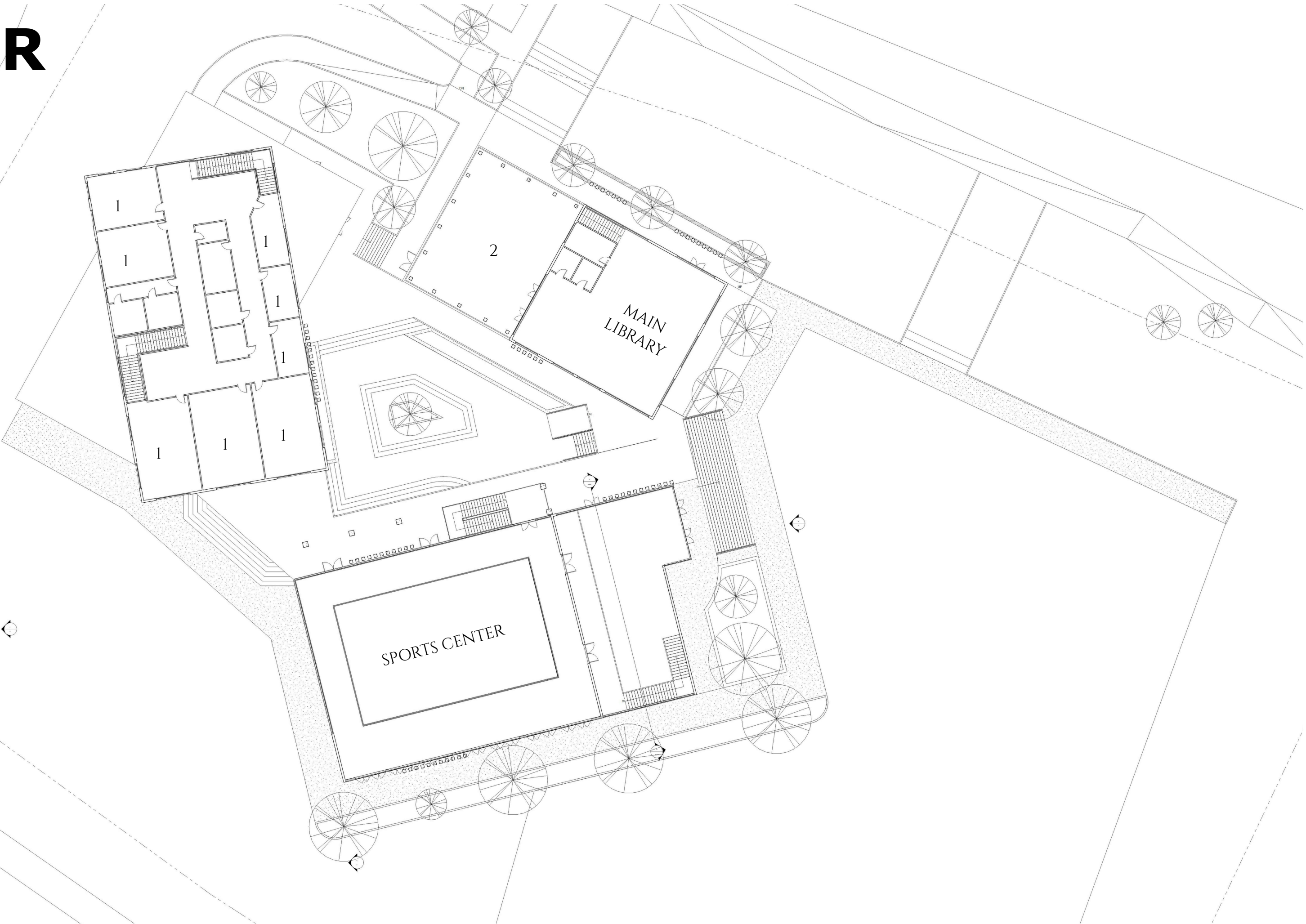
1ST FLOOR

10.0
10.0



- 1 CLASSROOMS
- 2 LOCKER ROOMS
- 3 MEDIA ROOM
- 4 CHILDRENS LIBRARY

2ND FLOOR



- 1 CLASSROOMS
- 2 ROOFTOP SEATING



RENDERERS

Materials

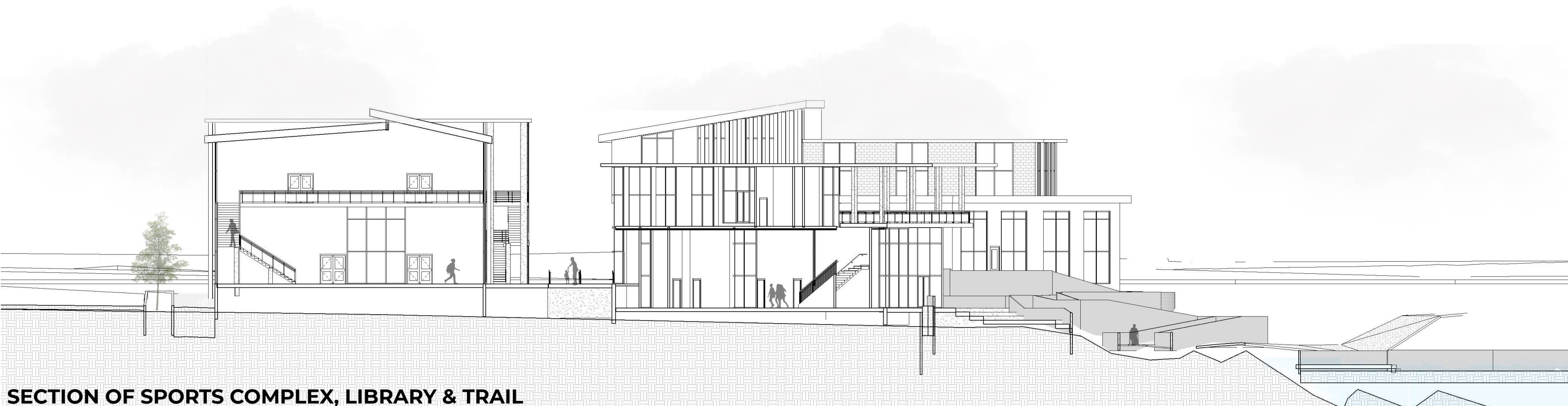
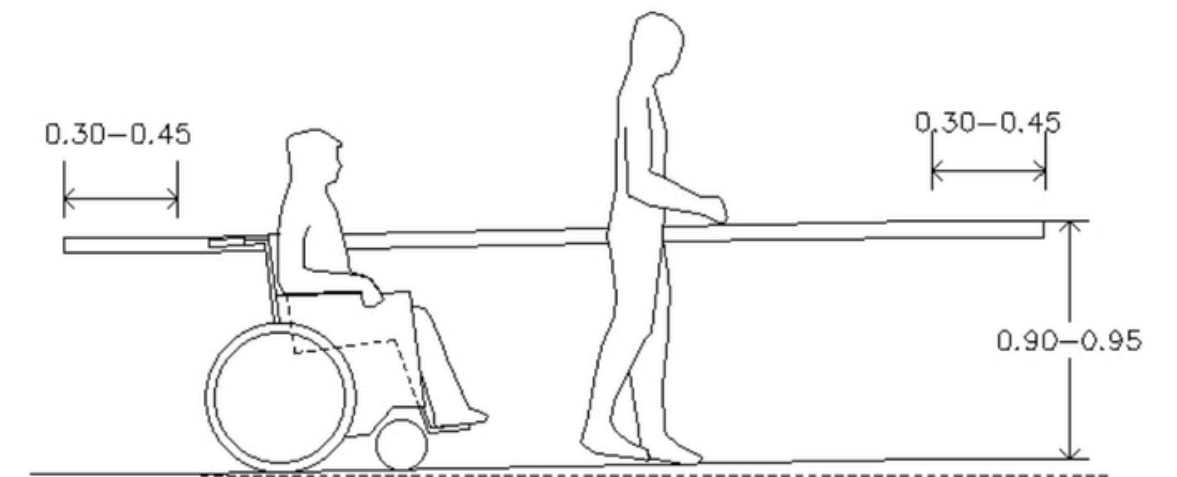
The design utilizes natural materials to create a "warm and inviting" feel.



SECTION OF SPORTS COMPLEX

Accessibility

Care is taken to ensure the site is physically and economically accessible to all ages.

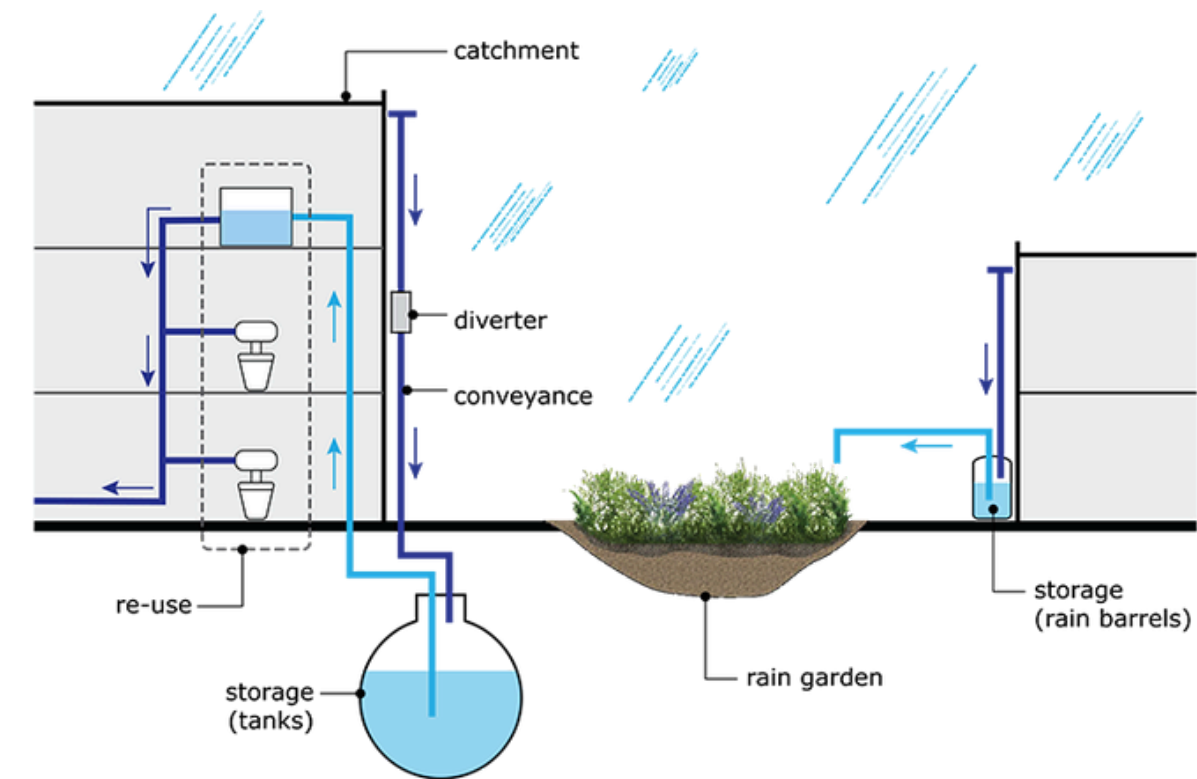


Sustainability

01

Rainwater Harvesting

Used irrigation and other non-potable needs, reducing reliance on municipally treated water helping lower water bills and helps during periods of drought or water restrictions



02

Bioswells

Bioswales reduce the speed and volume of stormwater, helping to lower peak flows during heavy rains. This lessens pressure on aging drainage systems and reduces the risk of flooding in adjacent communities and improving local air quality and lowering summer temperatures



IMPACT OF THE GROVE



01

01.

Better Learning

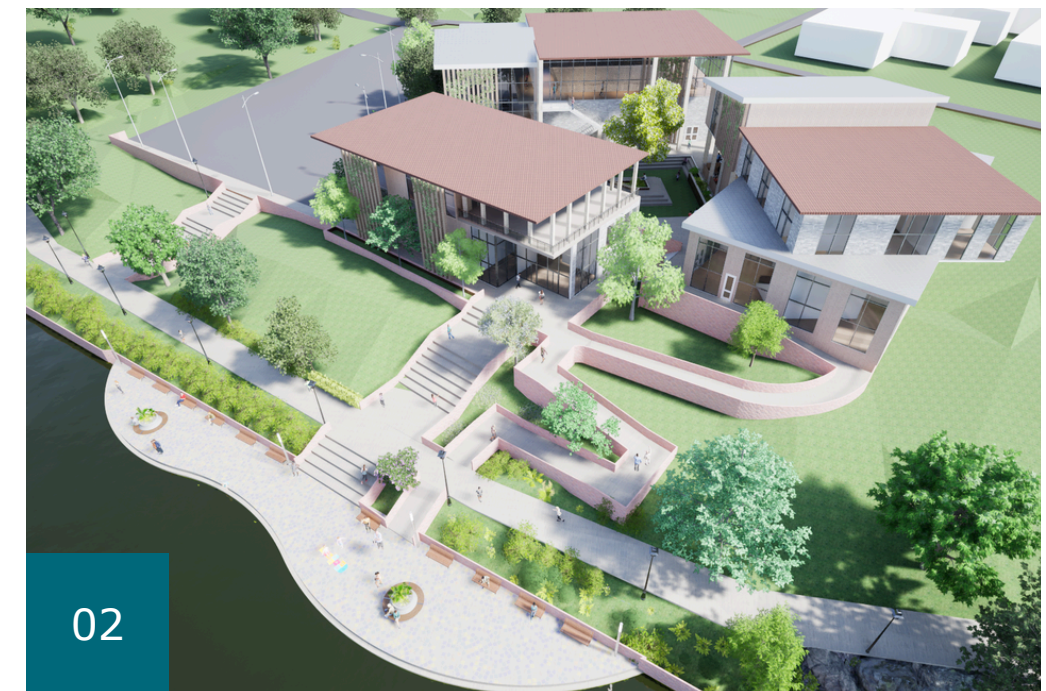
Learning is improved here because it is integrated into a social, active, and outdoor lifestyle.

A Typical Day A visitor might start with a walk on the trail, move to a hands-on gardening lesson, attend a language workshop, and finish with a podcast recording session.

02.

Growth

The Grove serves as a space for growth, helping individuals achieve development and positive behavior through a carefully nurtured environment.



02