



# Desert Mirage Elementary School

**“One School, One Family”**

*Camilo Cruz, Julian Cabrera, Brynn Smith, Hiley  
Worsley, and Steven Zhang*



# Site Analysis





# Site Analysis

Cafeteria



Classrooms



Administrative Building



Gymnasium

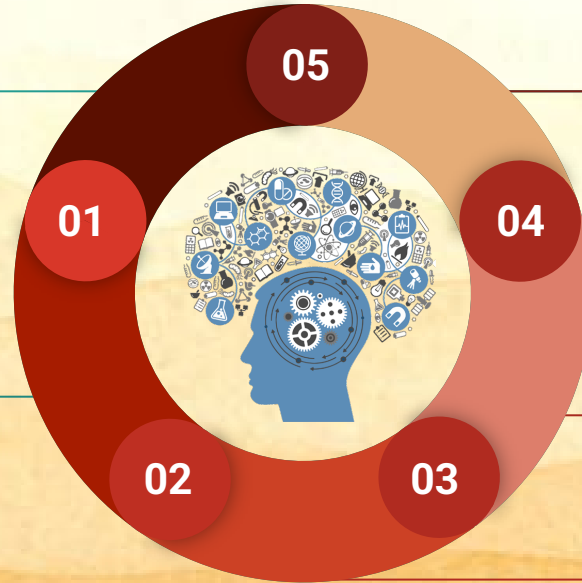


# Our Design Process

**Identify the Problem**

**Ideas**

**(Brainstorm sessions, Research, Consult with experts, Field trip, Interviews)**



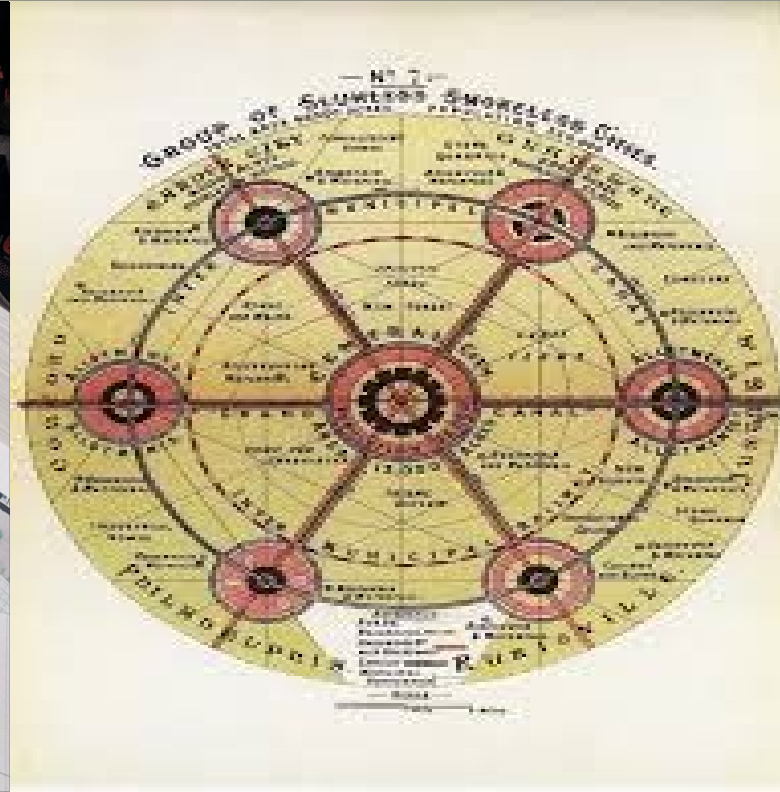
**Present to public  
and gather  
feedback to  
improve**

**Test and Improve  
the design**

**Create prototype  
design**

## Concept Diagram

# Garden City Concept by Ebenezer Howard



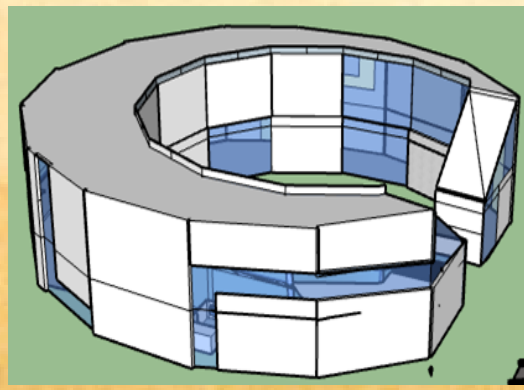
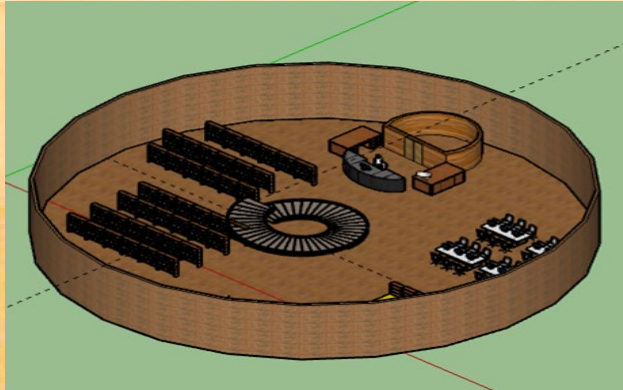
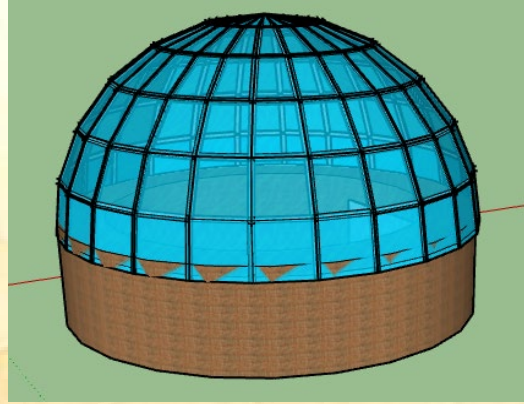
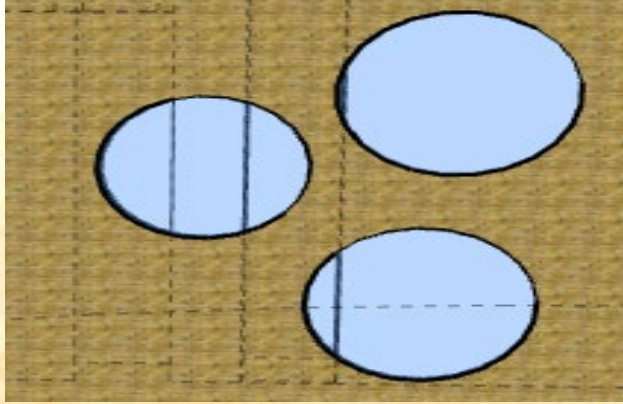


# Theme: Family

- We chose this theme because our motto is “One School One Family”
- We want to emphasize the school’s core values of care, support, and inclusivity.
- A family nurtures, accepts, and celebrates uniqueness, which inspired the use of circular designs to symbolize a hug—representing love, safety, and connection.
- Research supports that circular spaces promote relaxation and security, while reinforcing a welcoming and supportive learning environment.



# Circular/ Parabolic Design



- We used mostly circles and curves on our buildings because it makes it look more modern and more futuristic.





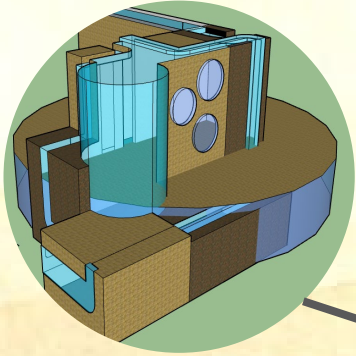
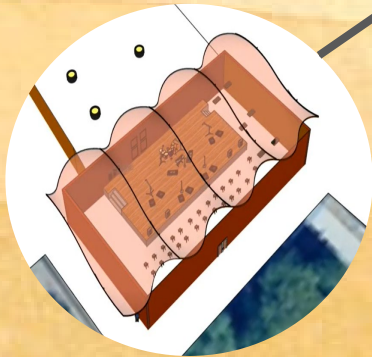
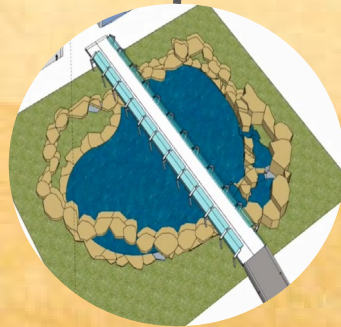
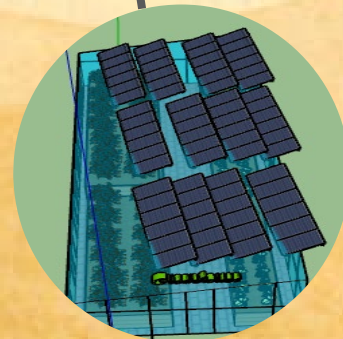
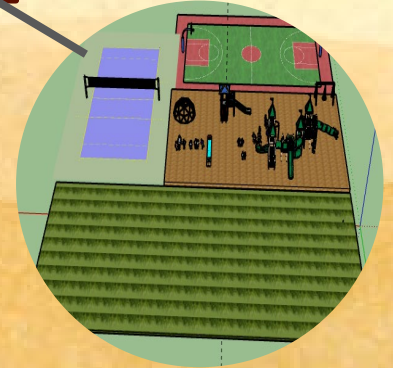
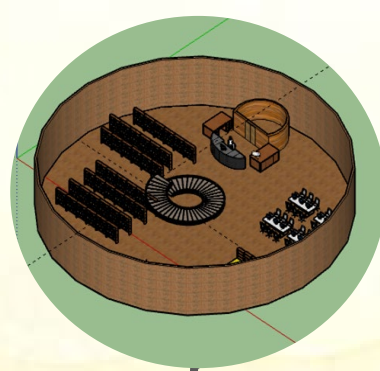
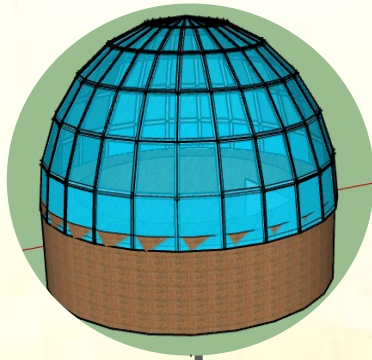
# Site Plan; Color Palette



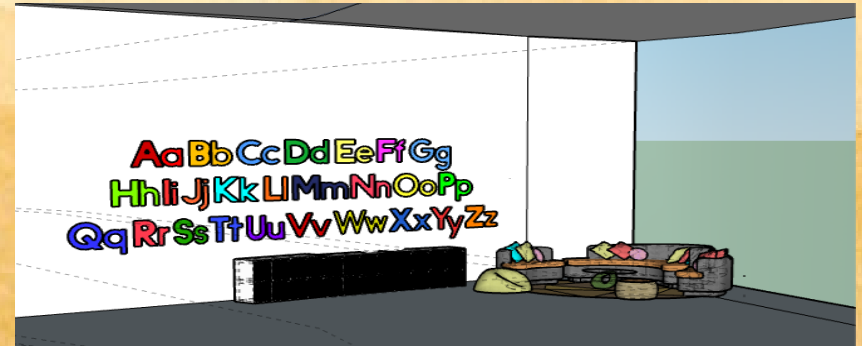
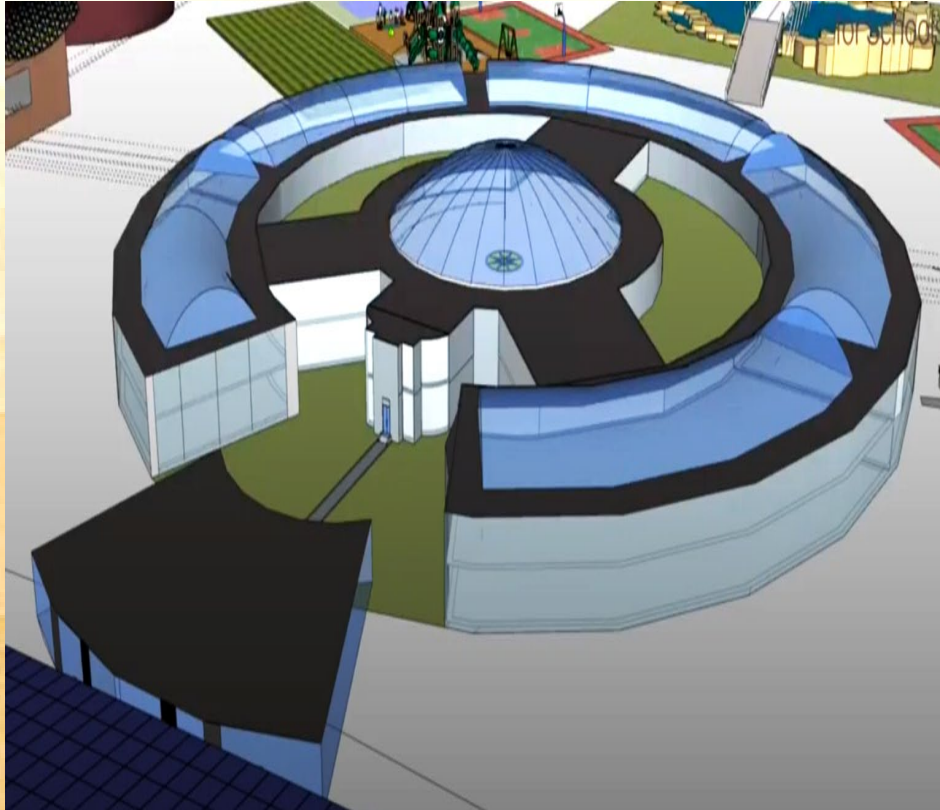
- Inspiration: Arizona Desert
- Color palette blends well with Desert Mirage's current design.
- Color palette will incorporate Arizona's culture and tribute to its iconic history of being known as the "Copper State".



# Community



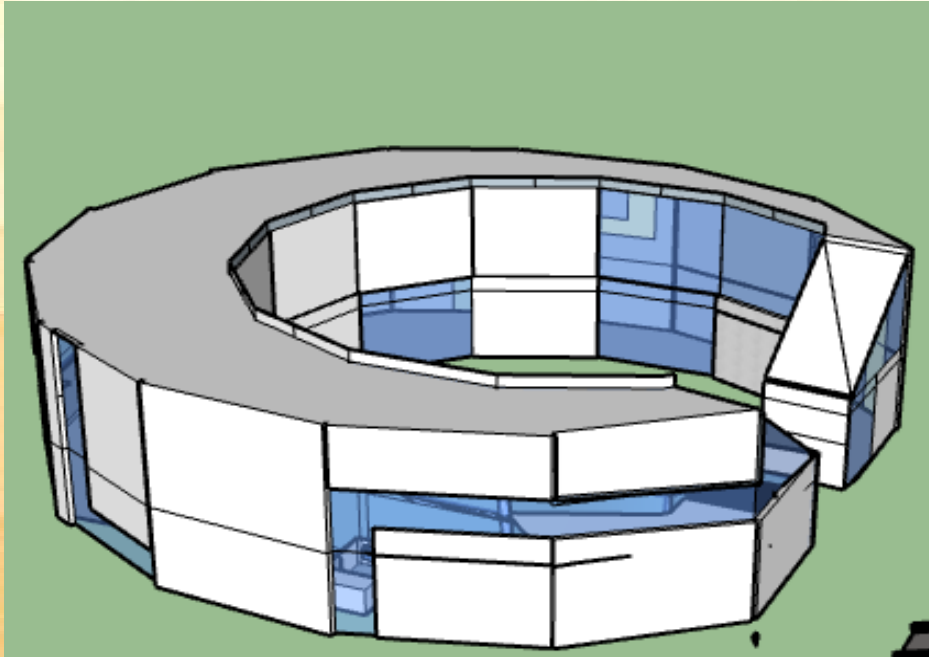
# Site Plan: Pre K to 5th Grade Classrooms



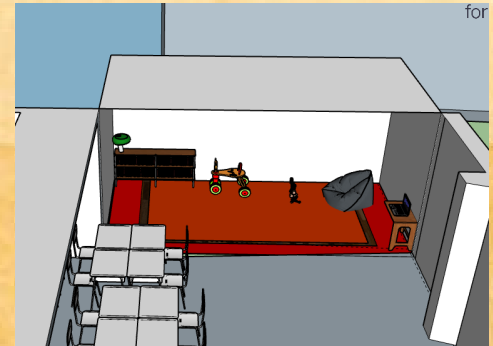
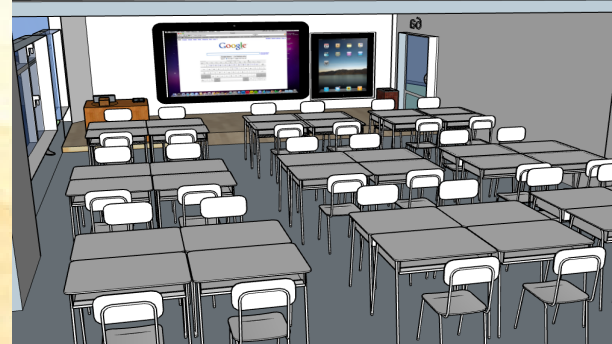


# 6th to 8th Grade Classrooms

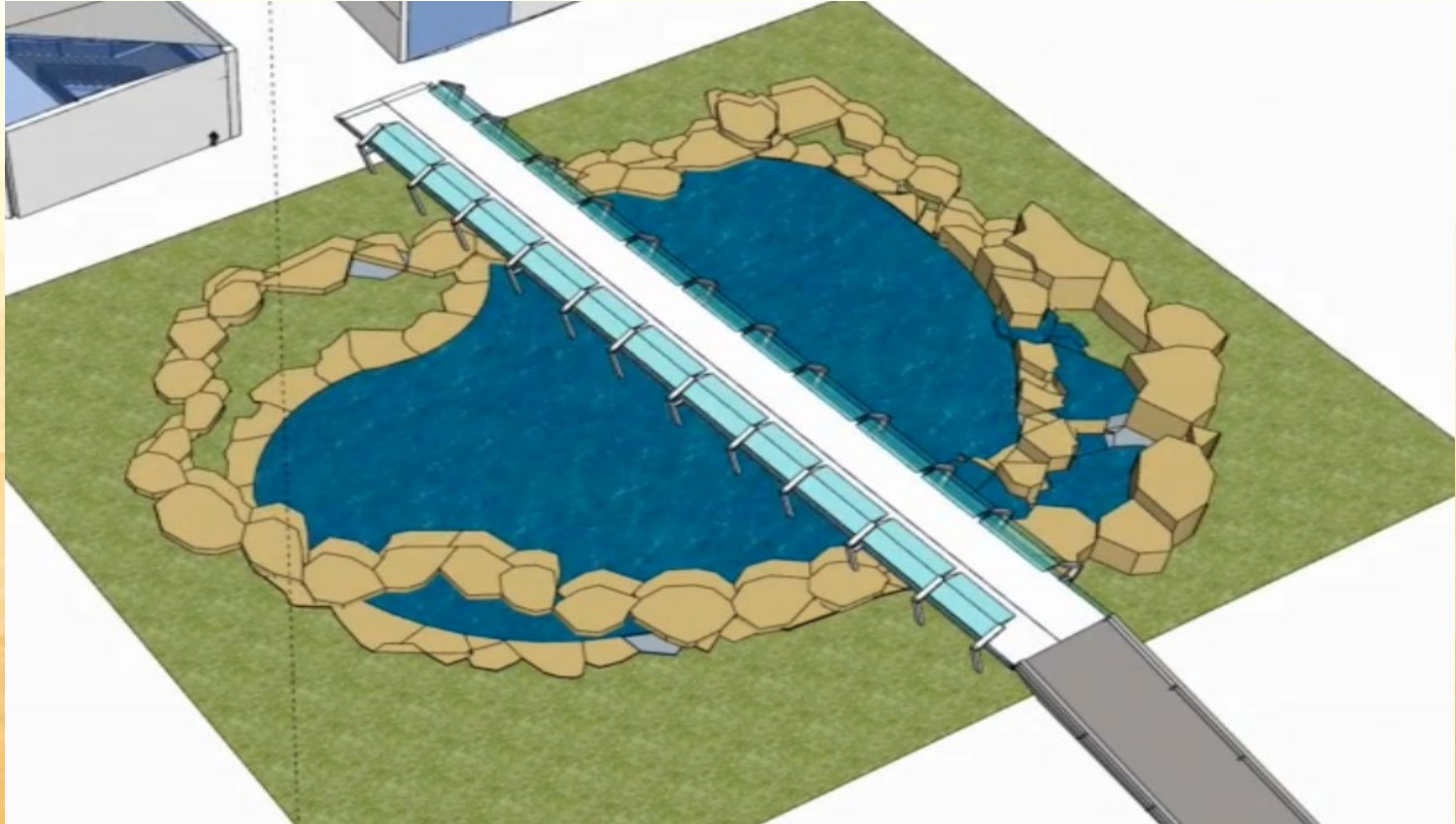
Exterior of Building



Interior of Building

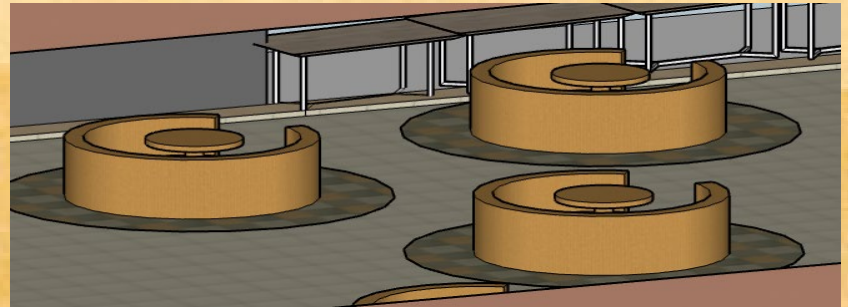
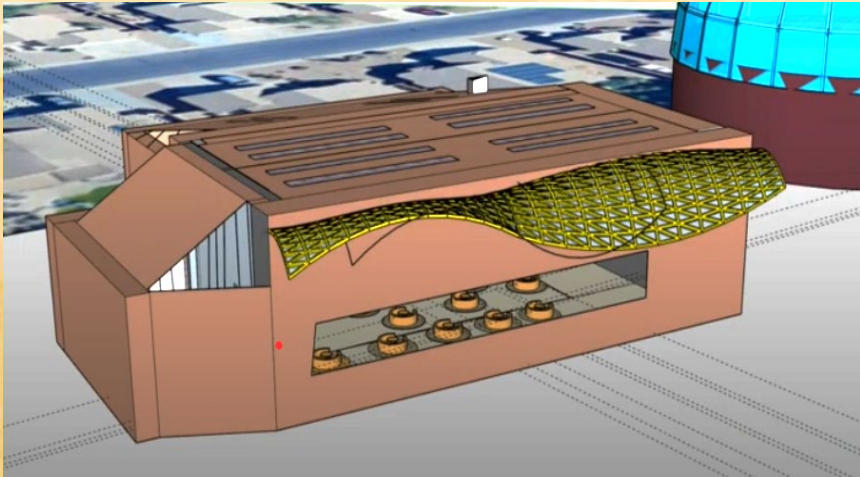
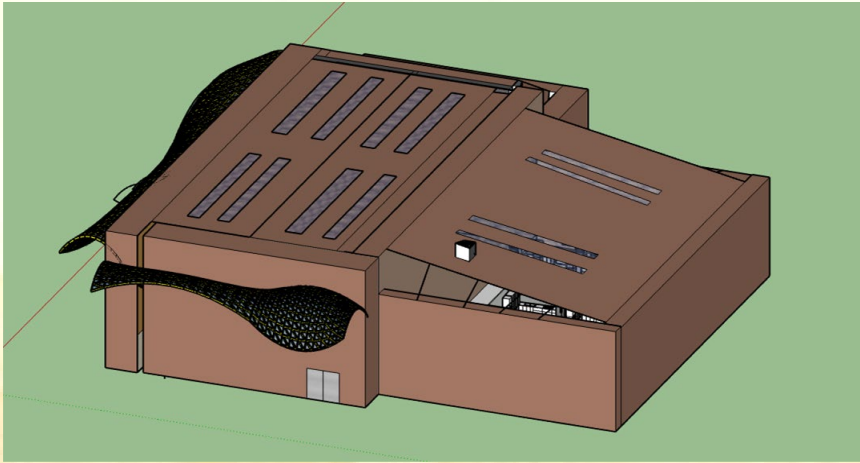


## Bridge and Lake



# New Cafeteria/Bistro

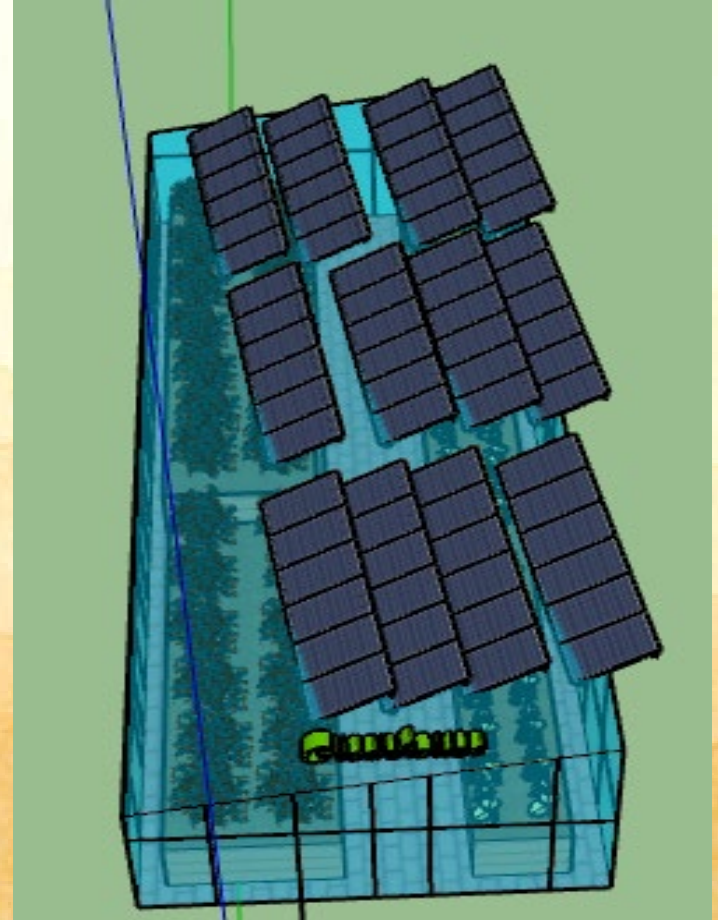
- Student seating will be circular booths as it will be in connection to our theme, family. Each booth will allow space for student relationships, collaboration, and inclusivity.
- Our new cafeteria design will have a roof that can lift up and down. The canopies will provide outdoor shade.
- It will be connected to a new improved teacher and staff lounge. The lounge will have sound proof walls, new and improved seating, amenities, and a workout area.
- The kitchen will be in connection to our greenhouse, and it will provide fresh vegetables and fruits.



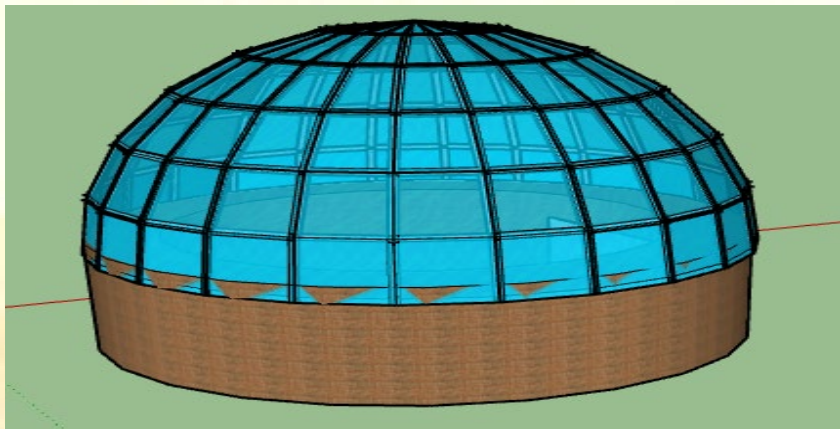


# Green House

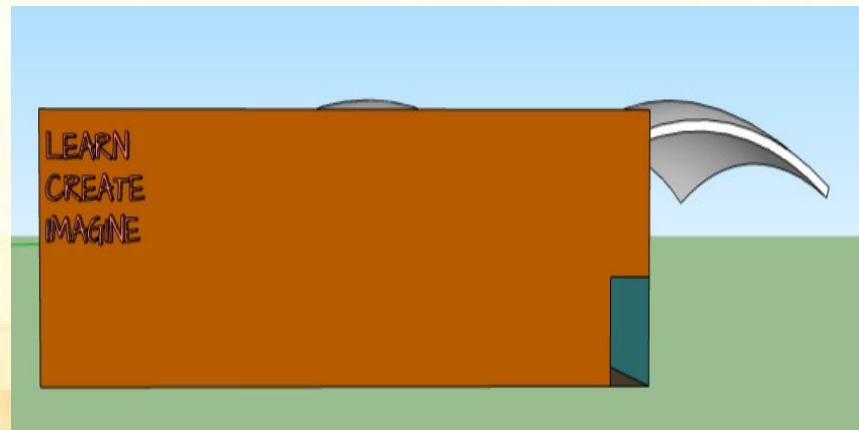
- Not all school have a green house but we believe having one will be beneficial to schools.
- Special feature: Movable solar panel to filter harsh sunlight of Arizona.
- Saguaro cactus will be planted in our greenhouse to teach resilience and hardwork.
- Our greenhouse will be connected to the community.
- The community can come teach scholars about gardening and taking care of plants.



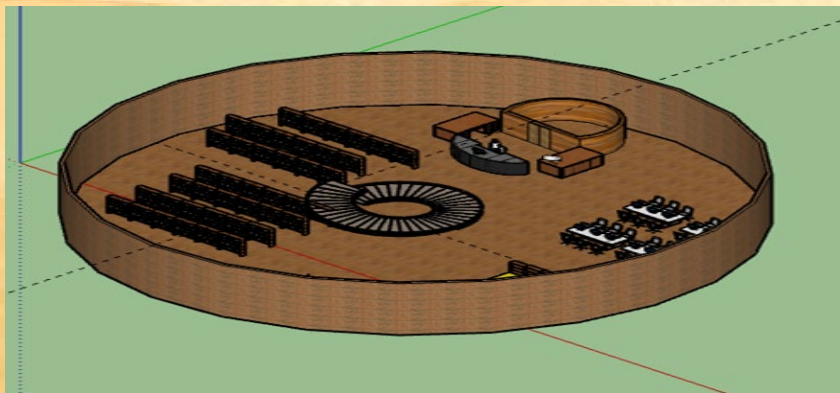
## Student Center



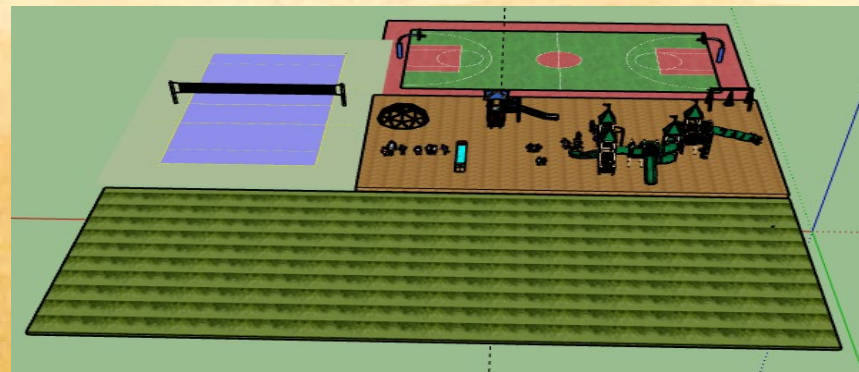
## Exceptional Student Services Building



## Library

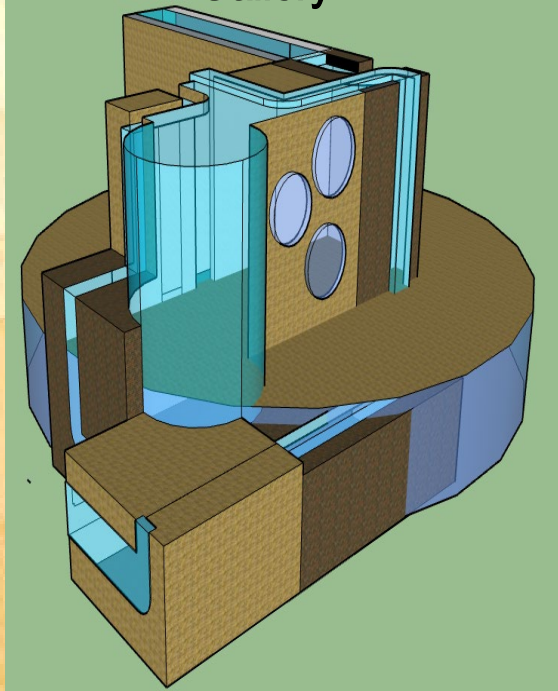


## Playground

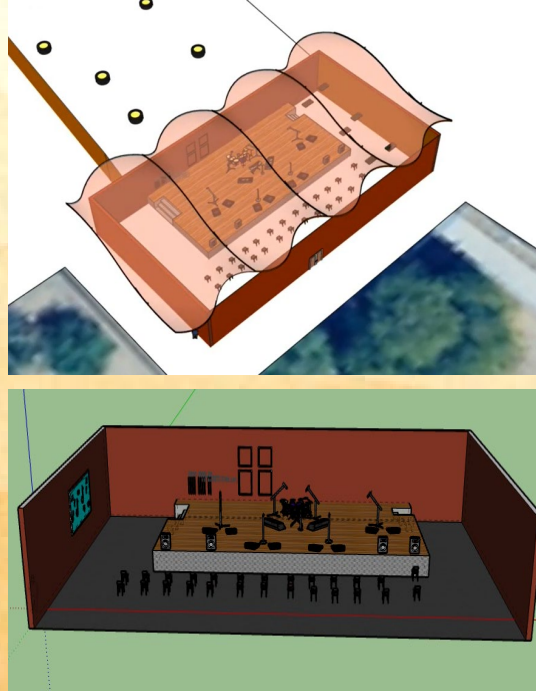


# Specials Building

Art Room and Art  
Gallery



Music Room



Gymnasium

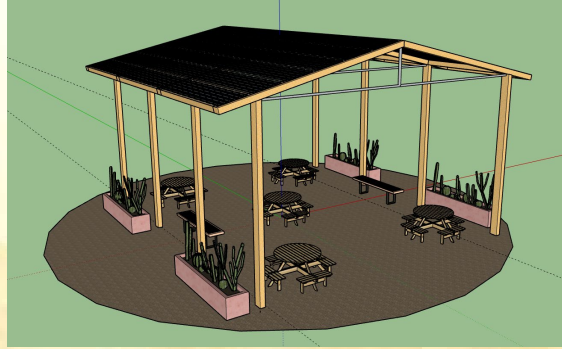




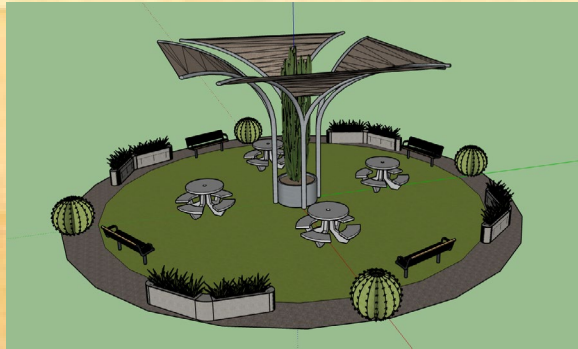
# Outdoor Areas Site Plan



Outdoor Areas SP 1



Outdoor Areas SP 2



Outdoor Areas SP 3



Outdoor Areas SP 4

- These areas are designed to incorporate solar panels, as well as our color scheme of the Arizona color palette.
- Our vision is to continue to incorporate circular plans, as well as a reflection of our native Arizona plants.
- These spaces are designed to provide a new outdoor learning environment that will allow scholars to collaborate and build strong relationships.

# Greenery Plan





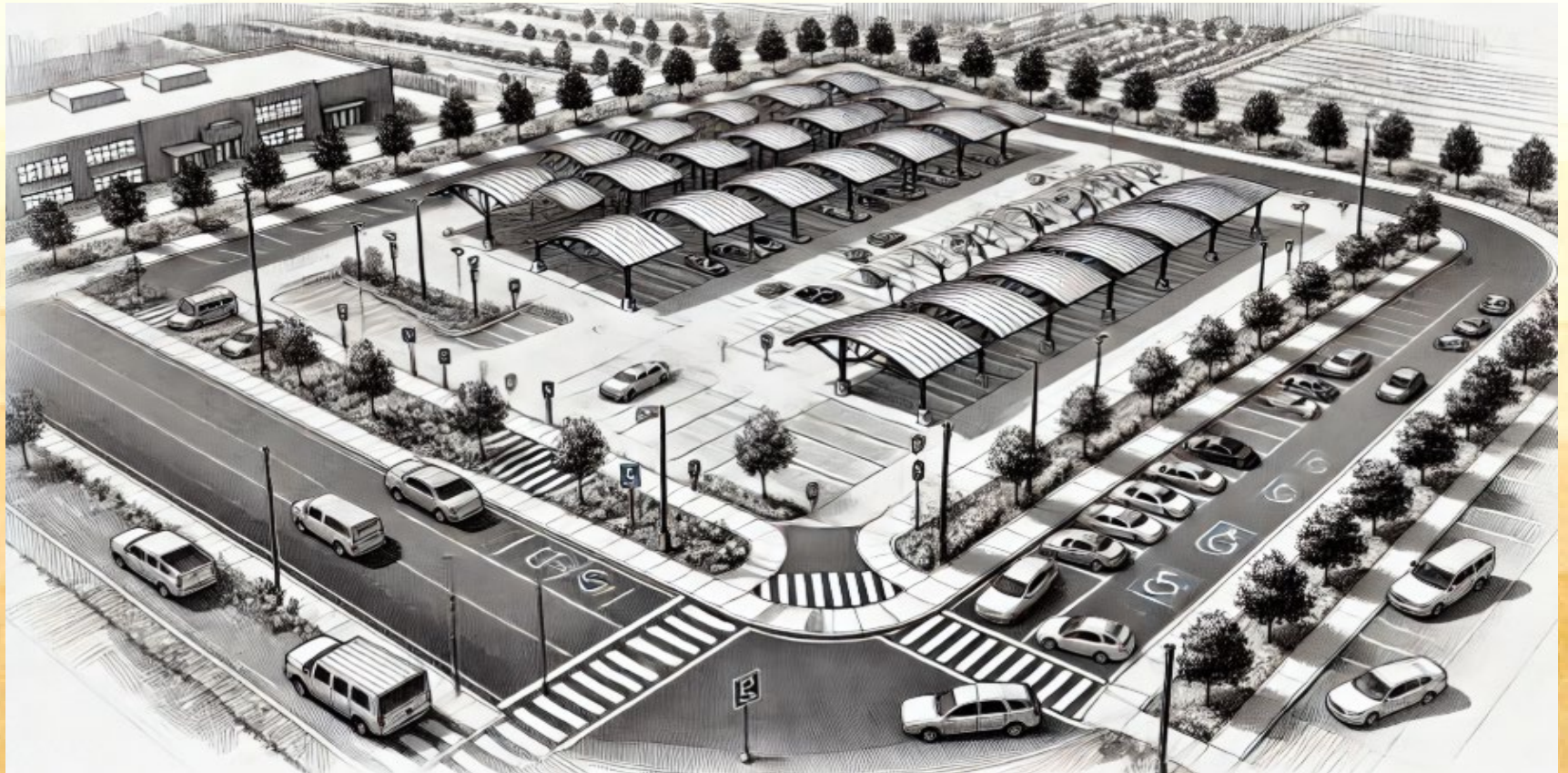
# Outdoor Areas Site Plan



School Pathway inspired by the Grand Canyon



# Outdoor Parking



# Final Model





**Questions?**