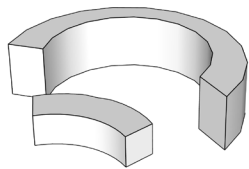


REDESIGN OF GUTHRIE CENTER

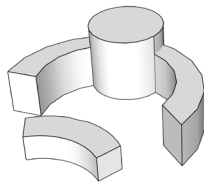
CTE Electives High School



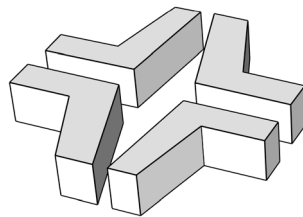
PARTI MODELS



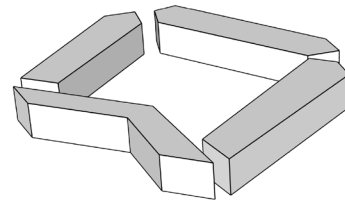
MODEL 1



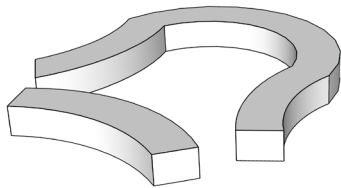
MODEL 2



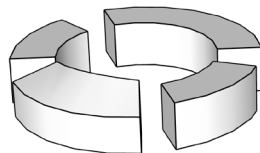
MODEL 3



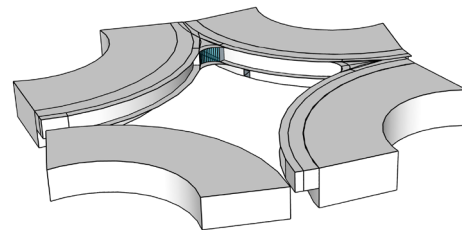
MODEL 4



MODEL 5

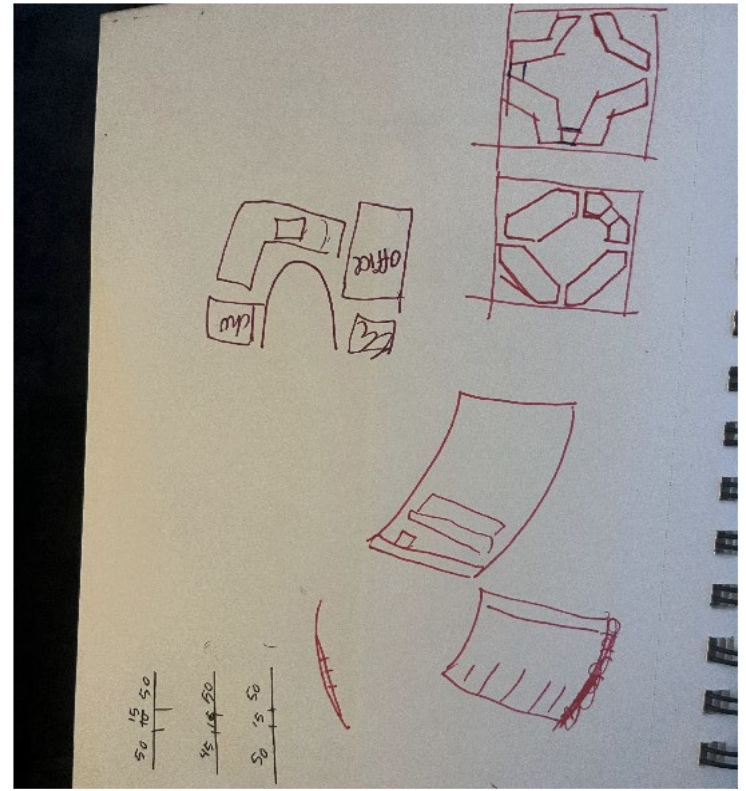
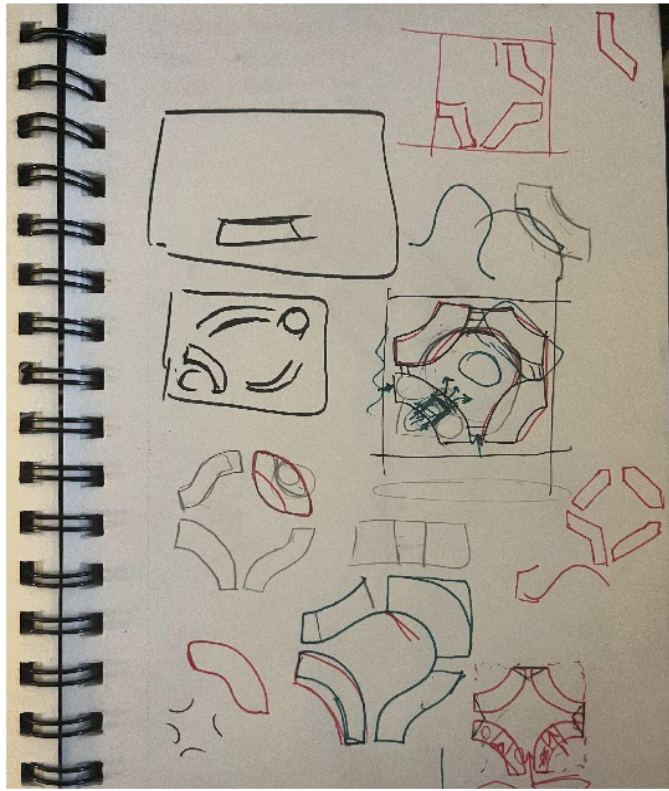


MODEL 6



MODEL 7

SKETCHES

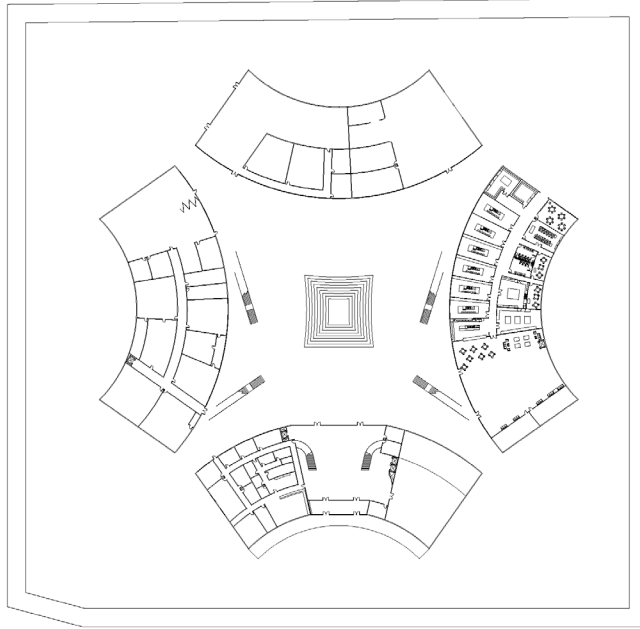


We wanted our original design to have the buildings surrounding a court yard area. The challenge was to find the best fit that was practical and pleased the eye. We ended up with four buildings connected through skywalks that had curved walls. We found this gave the illusion of a bigger court yard and provided connection and between classes. Our primary focus with this design was collaboration. As students attending the Guthrie Center, being able to talk to other classes helps us better understand the material and provide a unique experience at school.

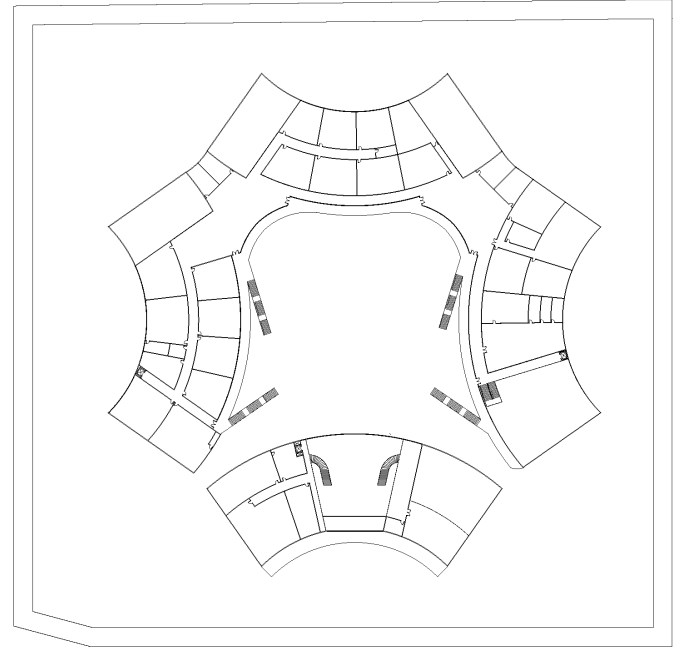


NORTH ANGLED AERIAL VIEW

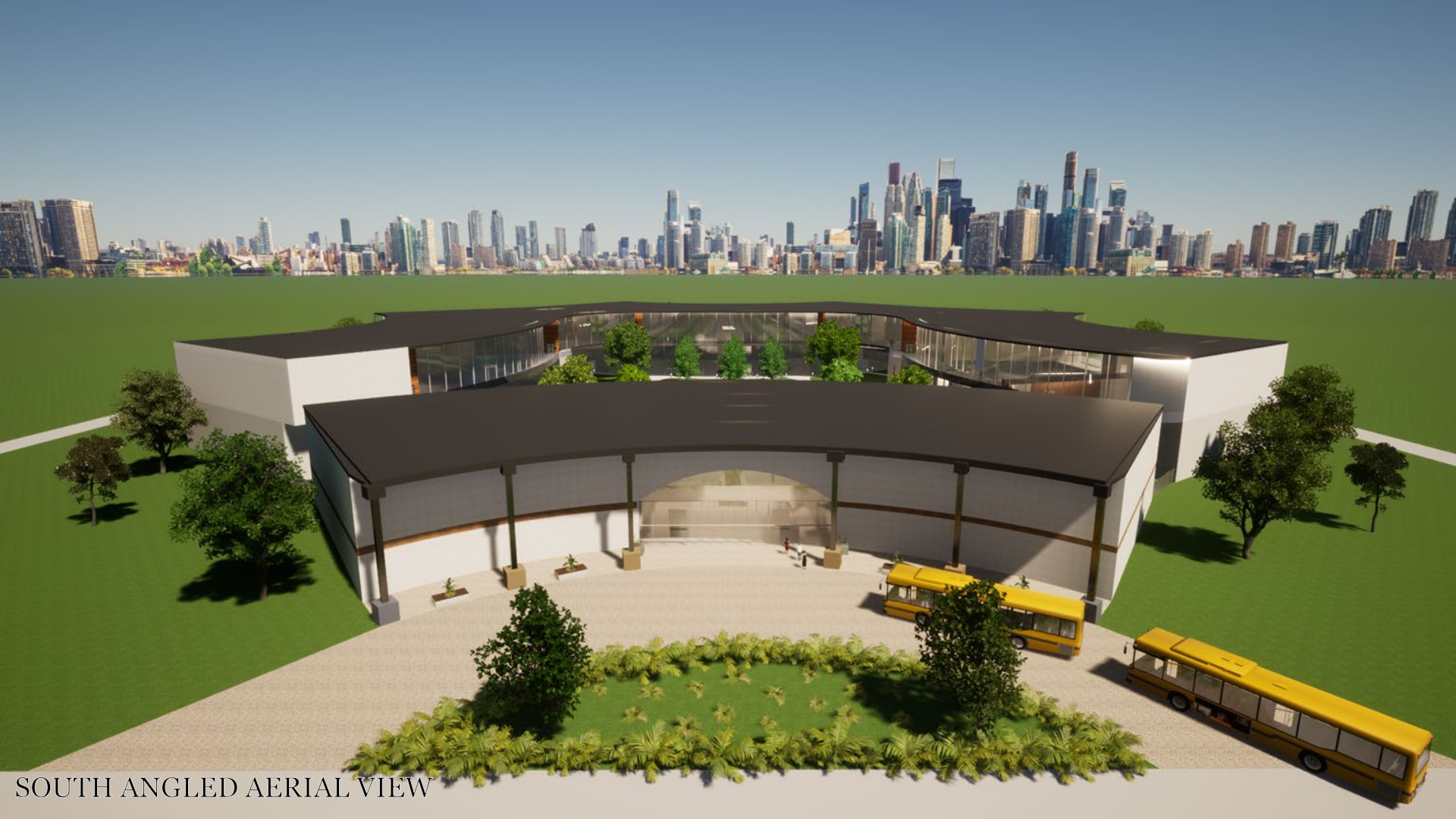
FIRST FLOOR



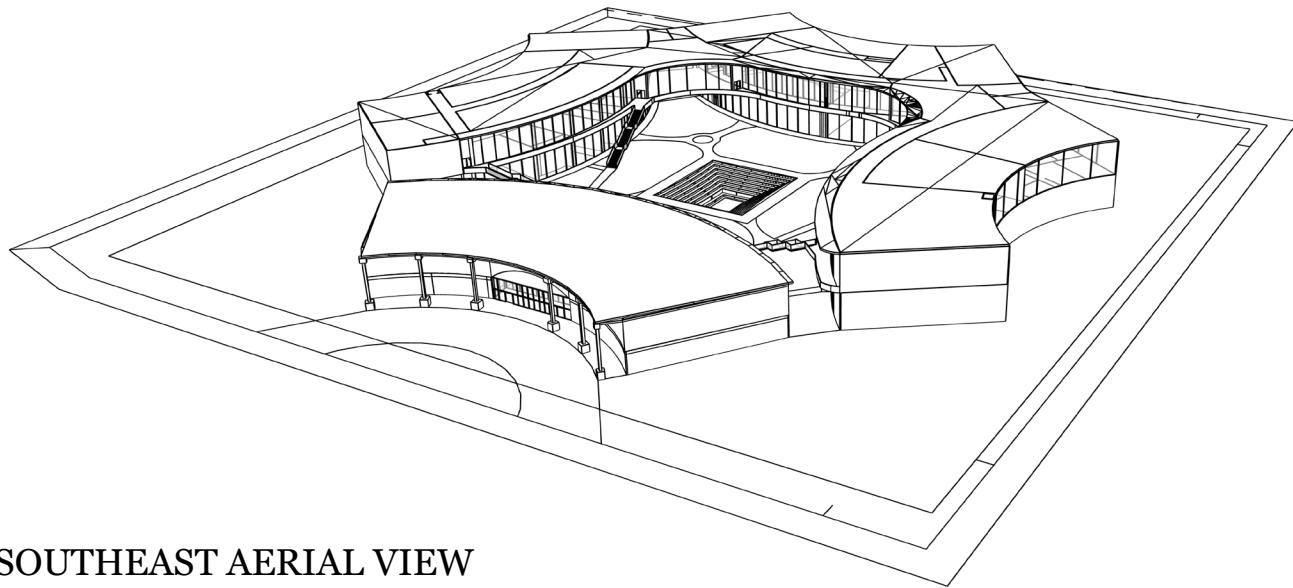
SECOND FLOOR



To increase teamwork and participation, each program offered has its own section to a building. Each division shares the floor with other relevant career paths, such as Graphic Design and 3D Animation. These two categories share similar interests in digitally designing, and placing the technological education departments in relative relation to each other allows for their projects to go hand in hand with each other. Besides collaboration, the departments were consolidated into noisy and silent environments to avoid distractions or headaches in the middle of a hushed classroom. When concluding our layout and separation throughout our building, collaboration and attention in class were our prime considerations.



SOUTH ANGLED AERIAL VIEW



SOUTHEAST AERIAL VIEW



FRONT ENTRANCE – SOUTH VIEW



COURTYARD

SITE PLAN



The overall shape of our building wasn't settled into in the easiest fashion. We vetoed the idea of a regular shape such as squares, triangles, or rectangles off the bat when we were initially drafting our building. We recognize that our concluding shape of the school is, in fact, unnatural but we feel that this differentiates us from any other building, school, or career center. This intentional feature - as we call it, the inside-out circle - provides security of closing outside access.

The new education building is rooted in the ideology of cooperative learning, a professional environment, and enjoyment among peers.



BALCONY VIEW

The sunken amphitheater alludes to a larger court yard and provides adequate seating for students and faculty especially during assemblies.



AMPHITHEATER

The amphitheater also has a draining system to capture rain water and circulate to power portions of the building with sustainable energy.



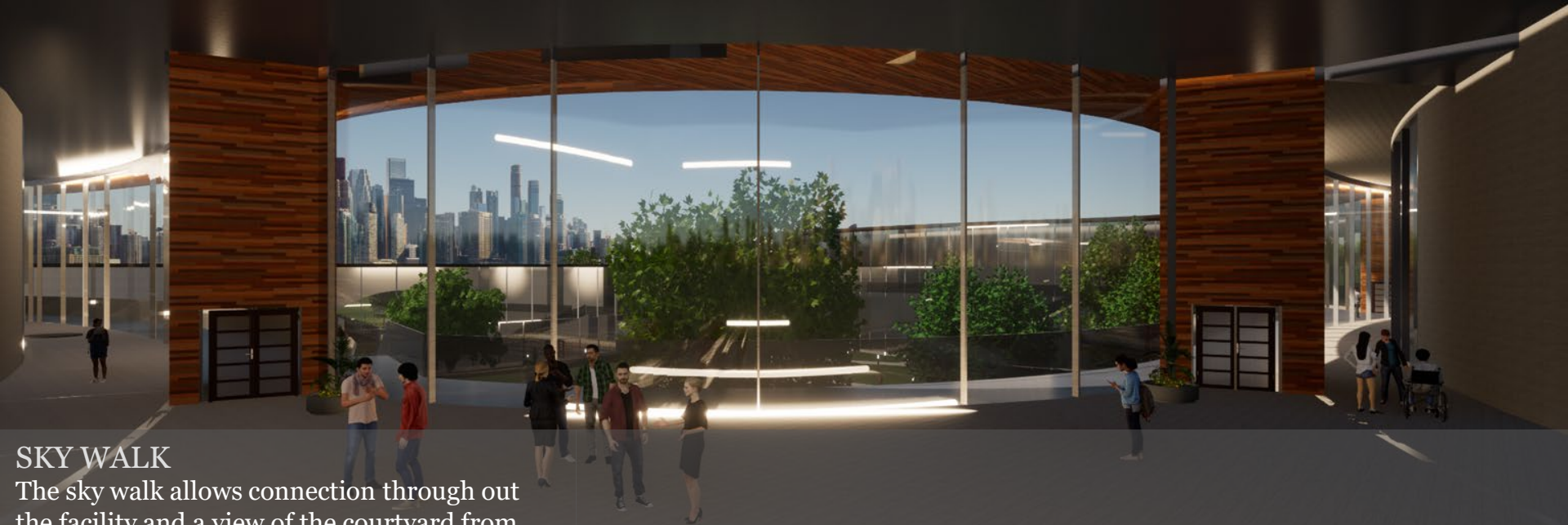
BUS CIRCLE



SOUTH ANGLED AERIAL VIEW



FRONT LOBBY



SKY WALK

The sky walk allows connection through out the facility and a view of the courtyard from above.



SOUTHWEST ANGLED AERIAL VIEW

The Guthrie Center

Discover.

Apply.

Succeed.

The Guthrie Center

Discover.

Apply.

Succeed.

STUDENT CENTER

The Student Center displays our motto of “Discover, Apply, and Succeed” with the Guthrie logo for an inviting appeal. The intention of this design is to represent our motto.



STUDENT CENTER



KITCHEN

The Culinary Arts Department provide anything necessary for professional culinary training, including an upfront area for ordering food from the Cafe or a sneak peek into the open kitchen from the Student Center.



KITCHEN

Cafe



CAFE