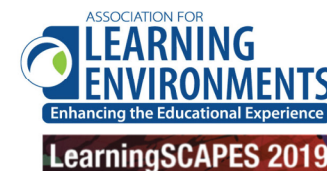


Transforming the Existing Schools of Los Angeles

Los Angeles Unified School District's Comprehensive Modernization Program



PRESENTING TEAM



Julia Eiko Hawkinson, Los Angeles Unified School District



Michael Pinto, NAC Architecture



Jorge de la Cal, CO Architects



Sandy Kate, HMC Architects



Transforming the Existing Schools of Los Angeles
Los Angeles Unified School District's Comprehensive Modernization Program



LearningSCAPES 2019

PRESENTING TEAM



Julia Eiko Hawkinson, Los Angeles Unified School District



Michael Pinto, NAC Architecture



Jorge de la Cal, CO Architects



Sandy Kate, HMC Architects



Transforming the Existing Schools of Los Angeles
Los Angeles Unified School District's Comprehensive Modernization Program



LearningSCAPES 2019

LEARNING OBJECTIVES

- Participants will learn how to develop a prioritization process based on District goals.
- Participants will understand how to utilize core principles to guide a scoping, planning and design process to allow for a consistent approach in the development of projects with diverse needs.
- Participants will be able to identify how to leverage site, scope and programmatic constraints on an existing campus to create design opportunities and transform schools.
- Participants will learn how to enhance a school's identity and support its educational vision through an investment in facilities.



LOS ANGELES UNIFIED SCHOOL DISTRICT

Population

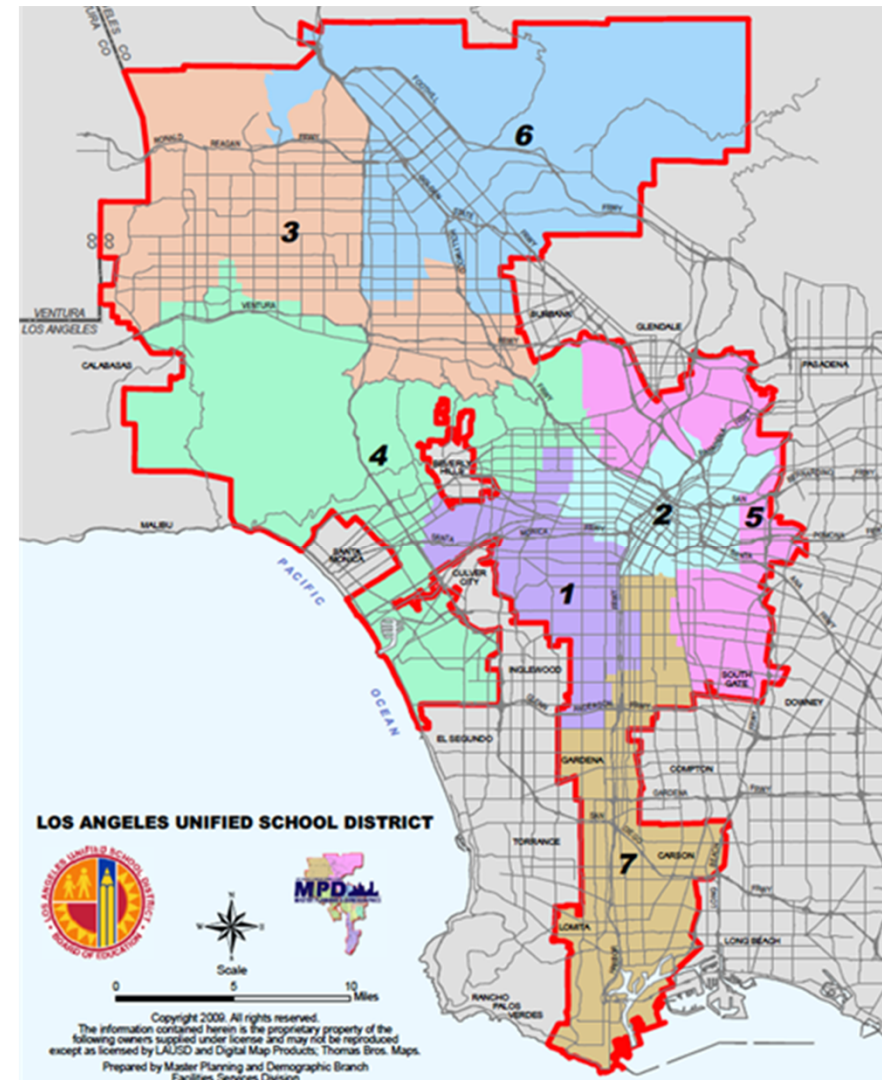
- 734,640 Total Student Enrollment
- 1,180 K-12 schools

Facilities

- 21 thousand buildings
- More than 800 Campuses
- Average age of schools 50+ years

Area Served

- 710 square miles
- 26 cities plus unincorporated areas of LA County



Transforming the Existing Schools of Los Angeles
Los Angeles Unified School District's Comprehensive Modernization Program



LearningSCAPES 2019

LAUSD BOND PROGRAM HISTORY

- \$27.5 B Bond Program
- Approximately \$19.9 B Invested
 - 136 New School Projects
 - Eliminated the Use of Multi-Track Calendars
 - Reduced School Overcrowding
 - Enabled Two-Semester Operation Districtwide
 - 21,900+ Repair and School Modernization Projects
- Existing schools are aging and deteriorating
 - Heavily used during years of overcrowding
- \$7.8 B School Upgrade Program (SUP)



SCHOOL UPGRADE PROGRAM

Board Approved Goals

- Schools Should be Physically Safe and Secure
 - School Building Systems Should be Sound and Efficient
 - School Facilities Should Align with Instructional Requirements and Vision
- **Projects will modernize, build and repair school facilities to improve student health, safety, and educational quality**



Transforming the Existing Schools of Los Angeles
Los Angeles Unified School District's Comprehensive Modernization Program



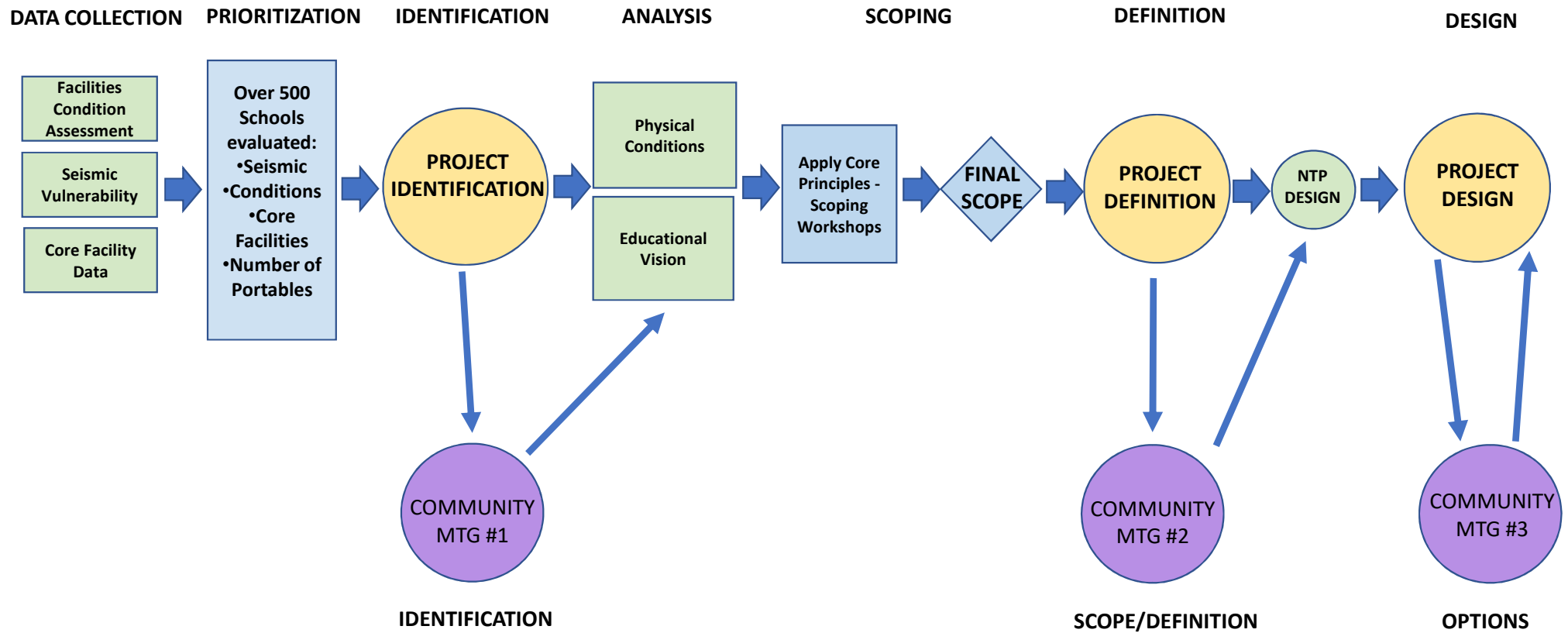
LearningSCAPES 2019

PRIORITIZATION

- Evaluate over 500 School Sites
- Determine Available Data
- Input from District Leadership
 - Base on physical conditions
 - Not academic performance
 - Not socio-economic data
- Prioritize Based on the Following Characteristics:
 - Condition
 - Seismic
 - Relocatable Buildings
 - Controlled Entry
 - Core Facilities Size
 - Density



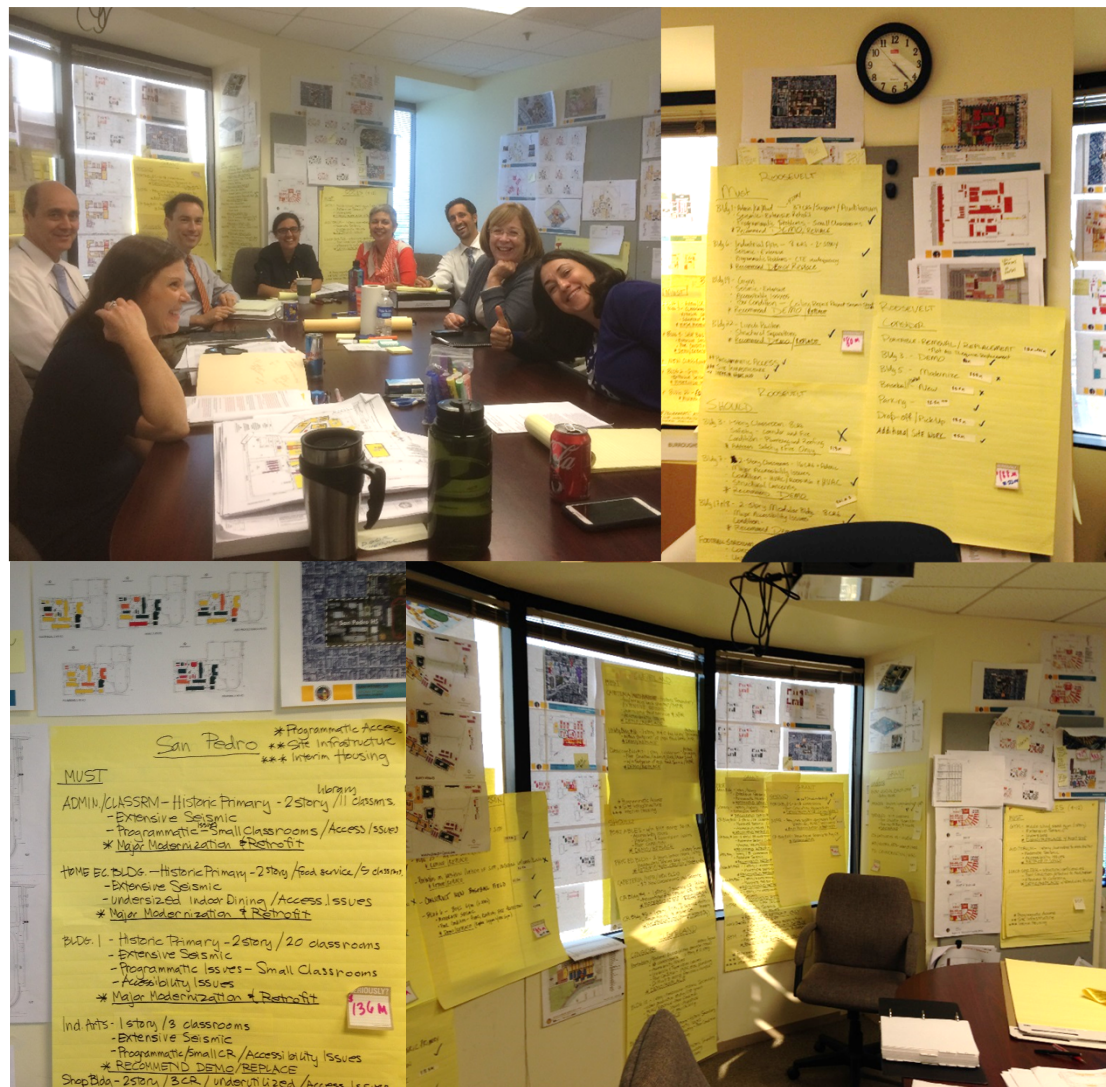
DEVELOPMENT AND DESIGN PROCESS



PROJECT DEFINITION CORE SCOPING PRINCIPLES

Consistent, transparent and equitable approach

- 1) Address seismic buildings
- 2) Significant physical conditions
 - 1) Health and safety risks
 - 2) Impact operations
- 3) Reduce relocatable buildings
- 4) Upgrade accessibility
- 5) Improve exterior conditions
- 6) Improve classroom interiors



Transforming the Existing Schools of Los Angeles
Los Angeles Unified School District's Comprehensive Modernization Program



LearningSCAPES 2019

COMPREHENSIVE MODERNIZATION PROJECT DEFINITION

- Upgrades will be Comprehensive:
 - Address building systems & components in buildings to be modernized
 - Improve the facilities to support the educational program
- Projects may Include:
 - New Buildings
 - Retrofit and Renovation Buildings
 - Site Infrastructure



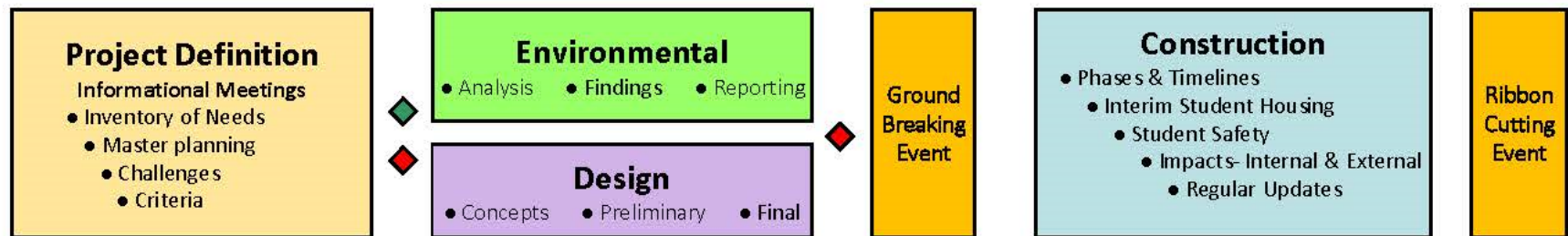
PROJECT SCOPING CHALLENGES

- Needs far exceed available funds
 - When the need is deep, where do you start?
 - We can't do everything
 - We don't have to do everything to transform a school
- Every school is different
 - Applying District standards
 - Parity and equity
 - Consistency of decision making



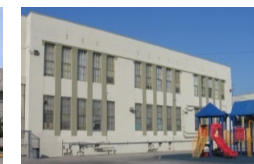
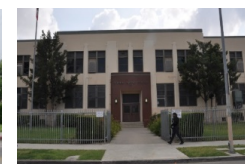
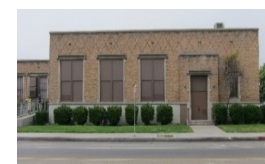
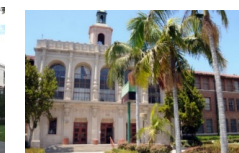
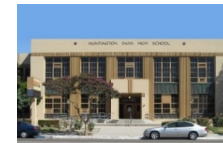
COMMUNITY ENGAGEMENT PROCESS

- Building Relationships
- Establishing Trust
- Each Neighborhood is Different
- Consistent Process
- Identify Advocates
 - Project Advisory Groups



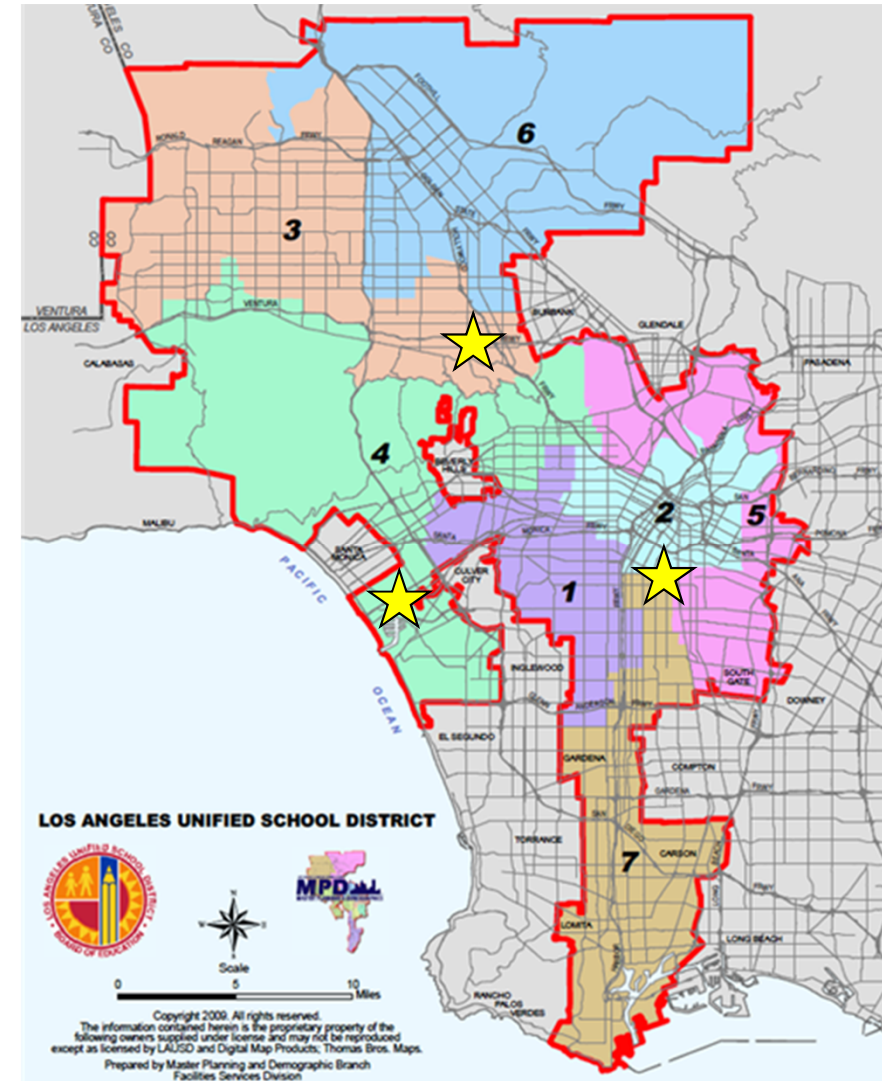
22 COMPREHENSIVE MODERNIZATION PROJECTS

- Sites with the greatest facilities needs:
 - 11 school sites - March 2015
 - 11 school sites - December 2016
- Approximately **\$3.4 billion**
 - Address **100+** Seismic Buildings
 - Renovate **45** Historic Buildings
 - Remove **270** Relocatable Buildings
 - Build **660+** new classrooms
 - Modernize **340** classrooms
- Improve the Learning Environment for over **38,000** Students



VENICE, NOHO AND JEFFERSON

- **Venice High School**
 - Westside
 - Planning Enrollment 2200
 - 28.14 acres
 - Founded in 1911
- **North Hollywood High School**
 - San Fernando Valley
 - Planning Enrollment 2500
 - 25.07 acres
 - Founded in 1929
- **Thomas Jefferson High School**
 - South Los Angeles
 - Planning Enrollment 1600
 - 18.51 acres
 - Founded in 1916



COMMON THEMES

- **Outdoor Space** for learning and physical activity
- **Career Technical Education Facilities** to meet the educational needs of the current programs
- **Gymnasiums** to support health, well-being and school activities
- **Visual and Performing Arts Spaces**
- **Special Education** learning spaces integrated into the campus.
- Campus **Accessibility** allows access for all learners
- **Comprehensive High School Campus**
 - Attract and Retain Students
 - Role in the Community



PRESENTING TEAM



Julia Eiko Hawkinson, Los Angeles Unified School District



Michael Pinto, NAC Architecture



Jorge de la Cal, CO Architects



Sandy Kate, HMC Architects



Transforming the Existing Schools of Los Angeles
Los Angeles Unified School District's Comprehensive Modernization Program



LearningSCAPES 2019



VENICE HIGH SCHOOL COMPLETE MODERNIZATION



Transforming the Existing Schools of Los Angeles
Los Angeles Unified School District's Comprehensive Modernization Program

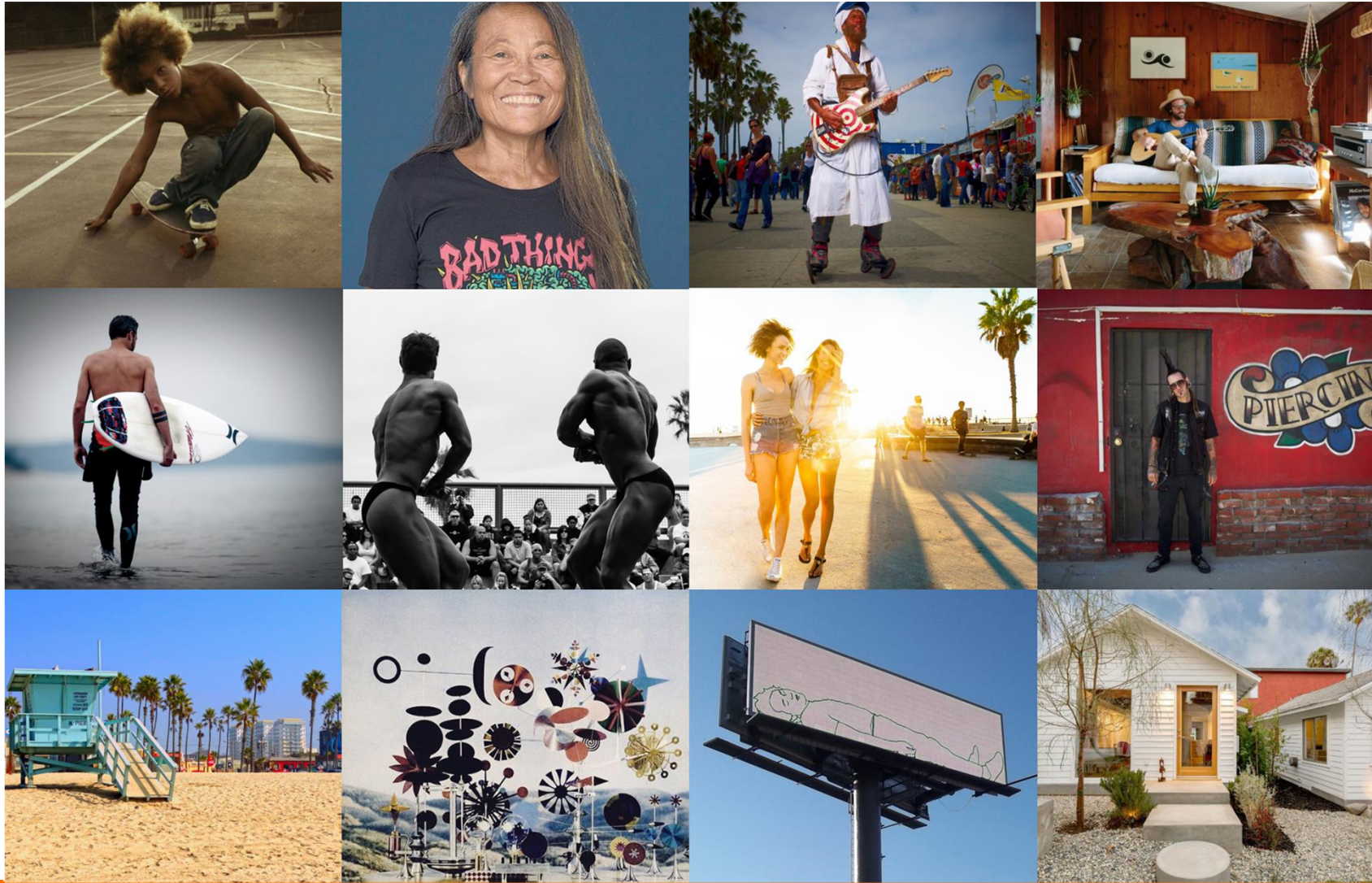


LearningSCAPES 2019

Venice High School aka Rydell High School





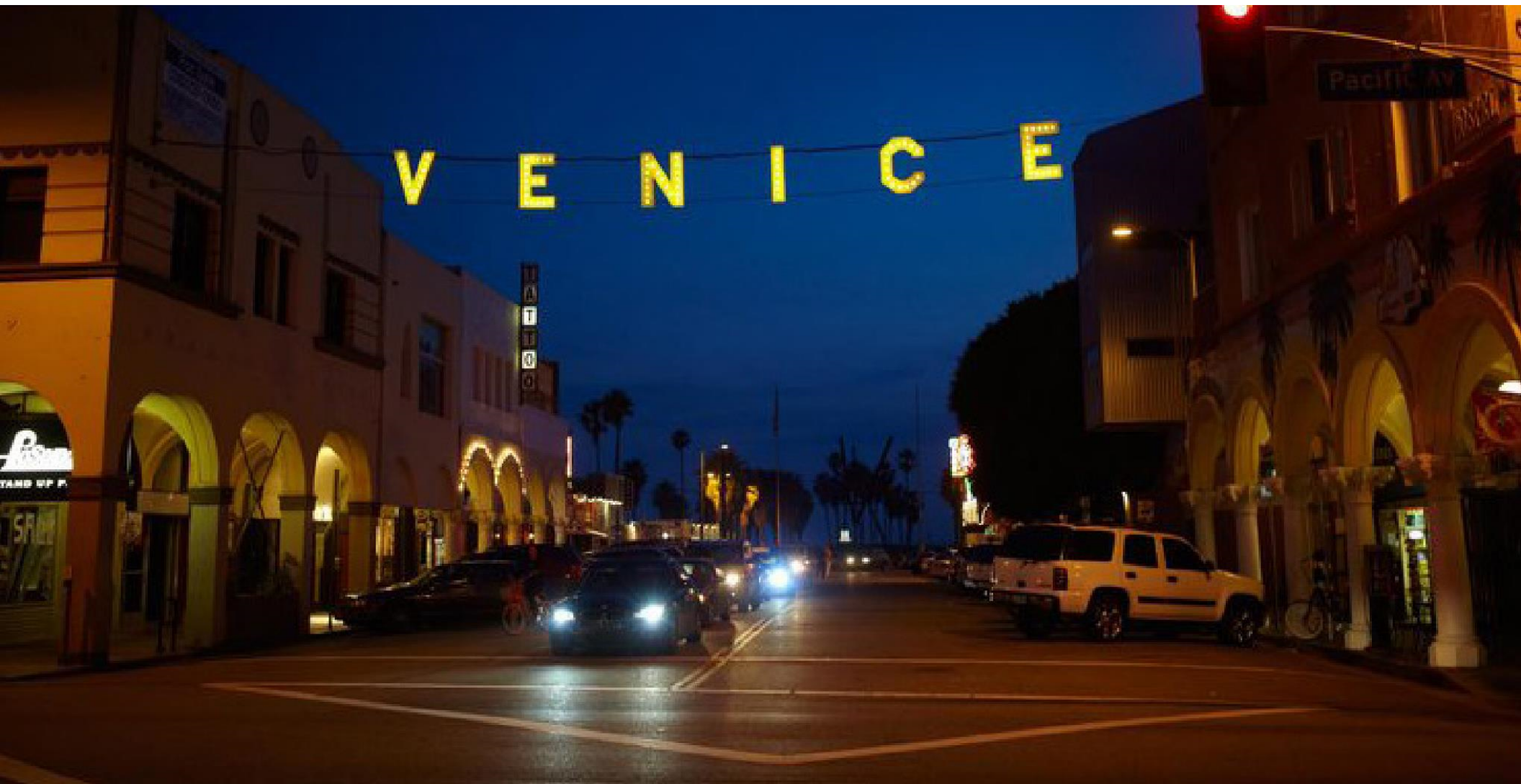


Transforming the Existing Schools of Los Angeles

Los Angeles Unified School District's Comprehensive Modernization Program



LearningSCAPES 2019







Venice High School

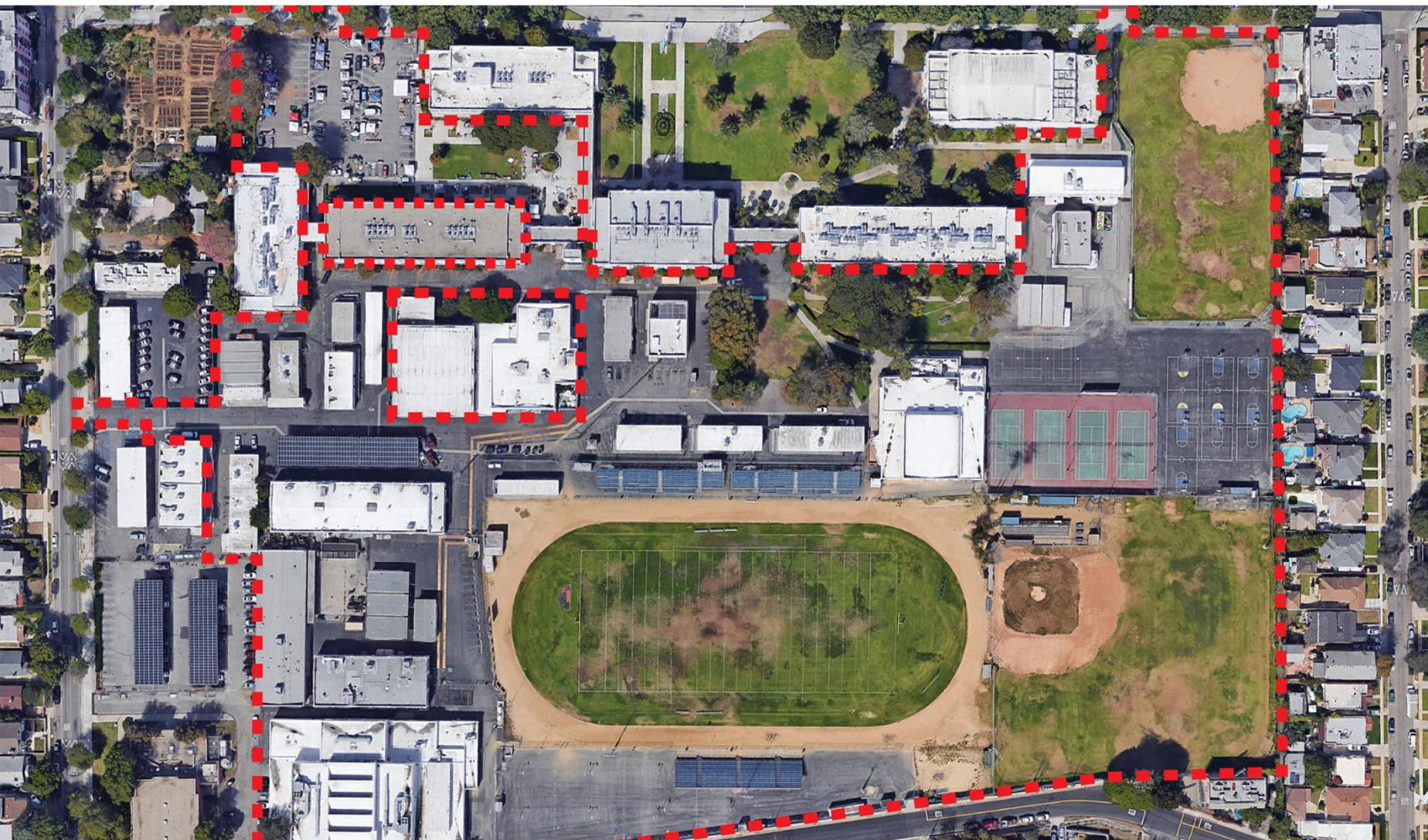
Approved Project Definition

Scope of Work

- **New Building(s) to be Constructed**
 - Classrooms (General, Science, Specialty)
 - Gymnasium
 - Field bleachers
- **Site Upgrades**
 - Site infrastructure
 - Vehicular circulation
 - Track and Field
 - Baseball and Softball
 - P.E. courts and Tennis
 - Landscape & Hardscape
 - Accessibility
 - Exterior Paint

Site Acreage: 28.8 Acres





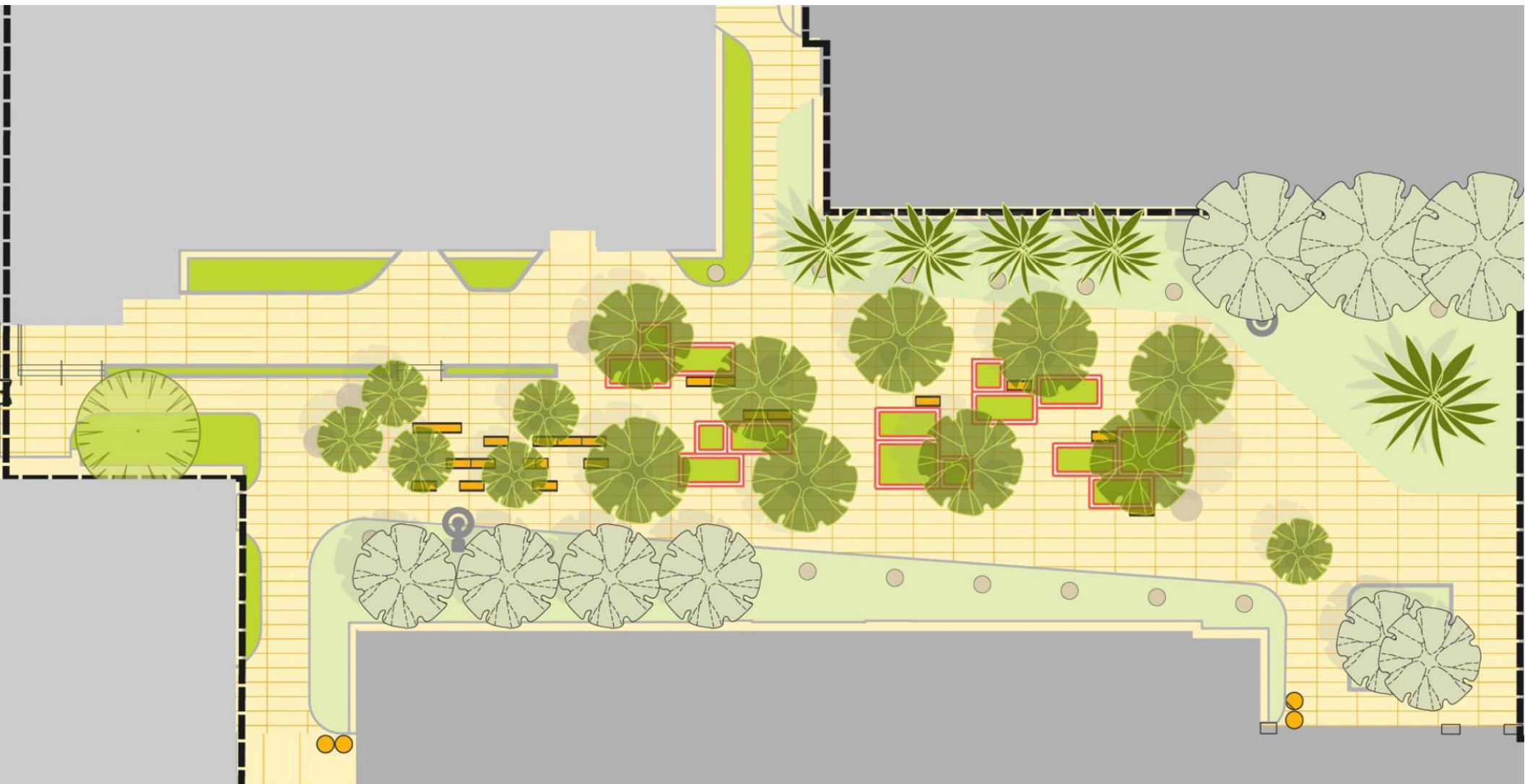




 **Transforming the Existing Schools of Los Angeles**
Los Angeles Unified School District's Comprehensive Modernization Program



LearningSCAPES 2019



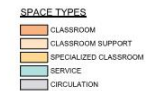


Transforming the Existing Schools of Los Angeles

Los Angeles Unified School District's Comprehensive Modernization Program



LearningSCAPES 2019



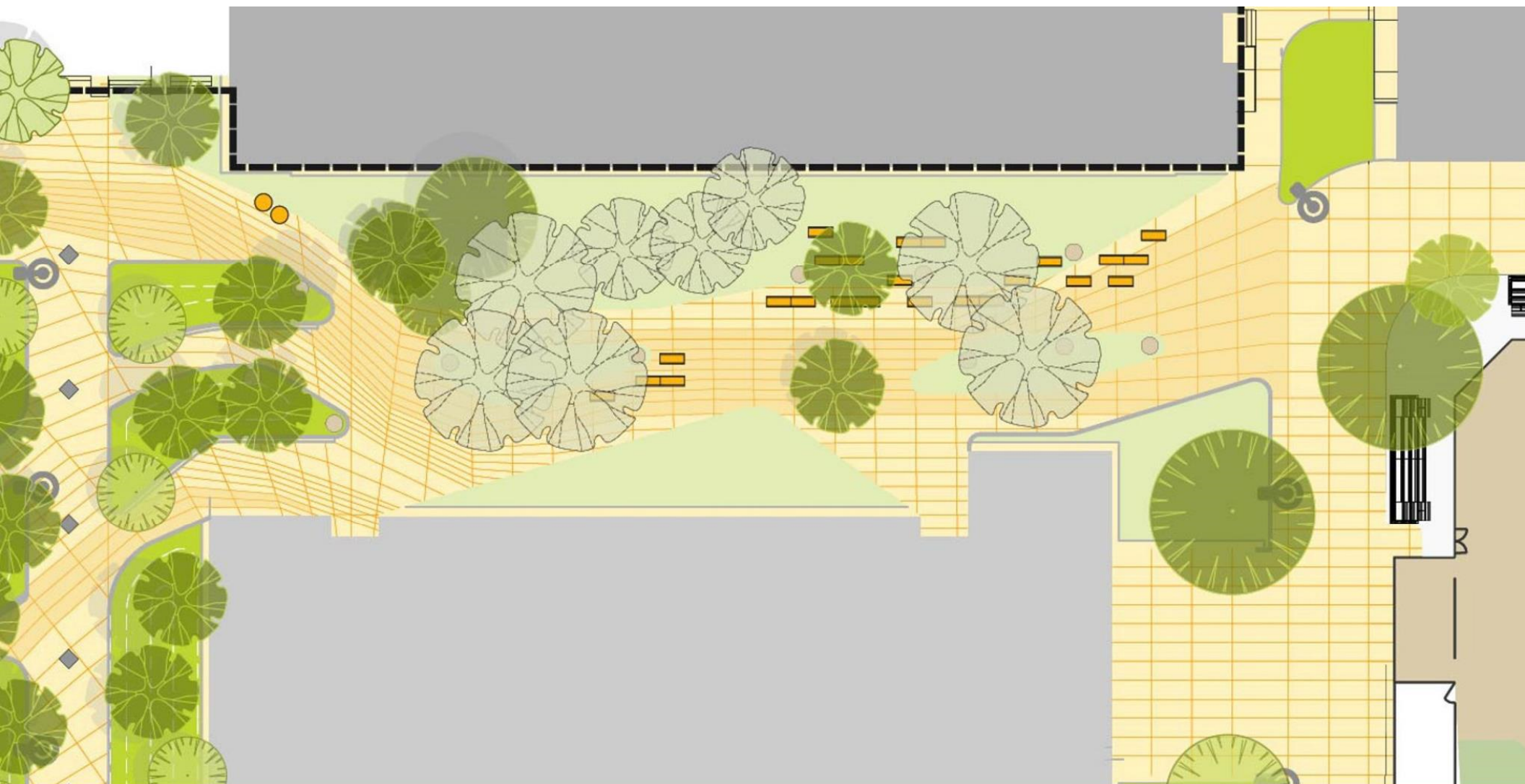
Transforming the Existing Schools of Los Angeles

Los Angeles Unified School District's Comprehensive Modernization Program



LearningSCAPES 2019



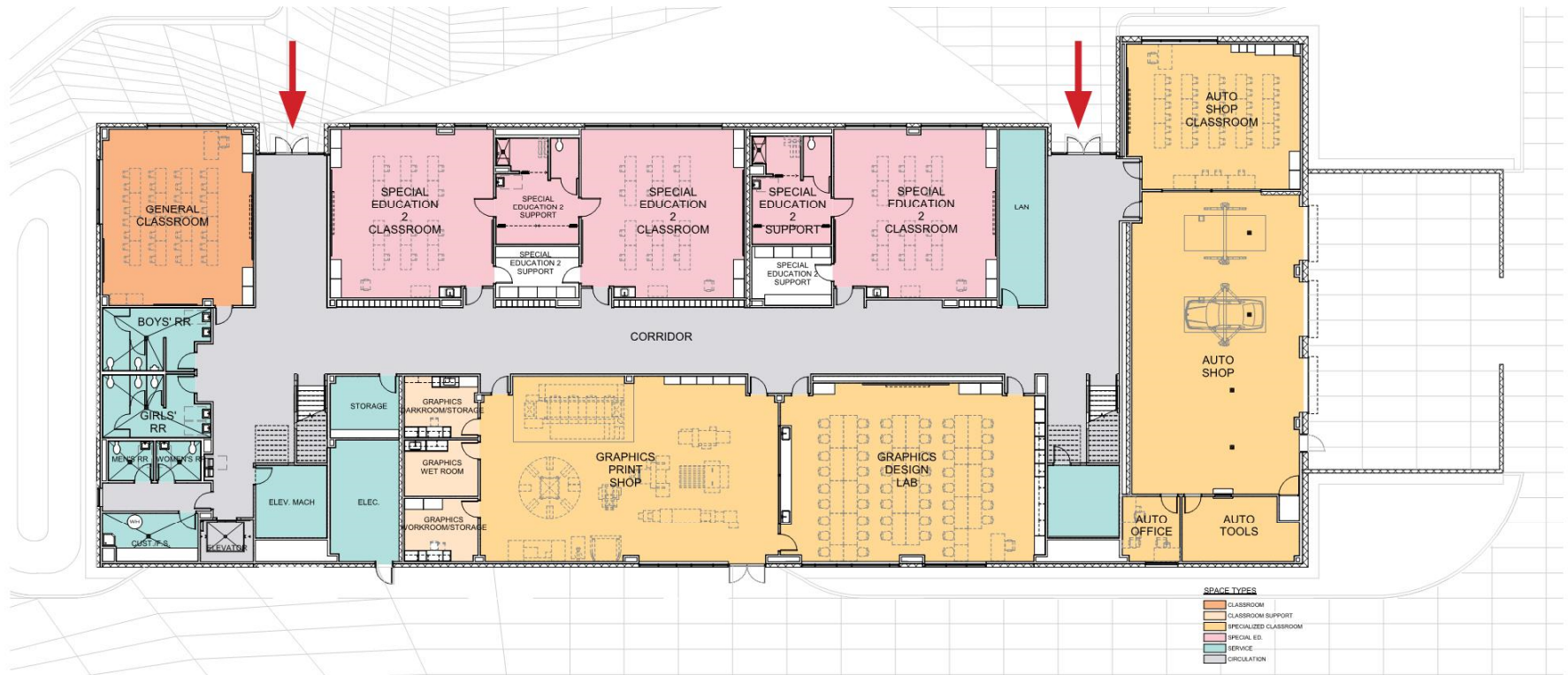


Transforming the Existing Schools of Los Angeles
Los Angeles Unified School District's Comprehensive Modernization Program



LearningSCAPES 2019



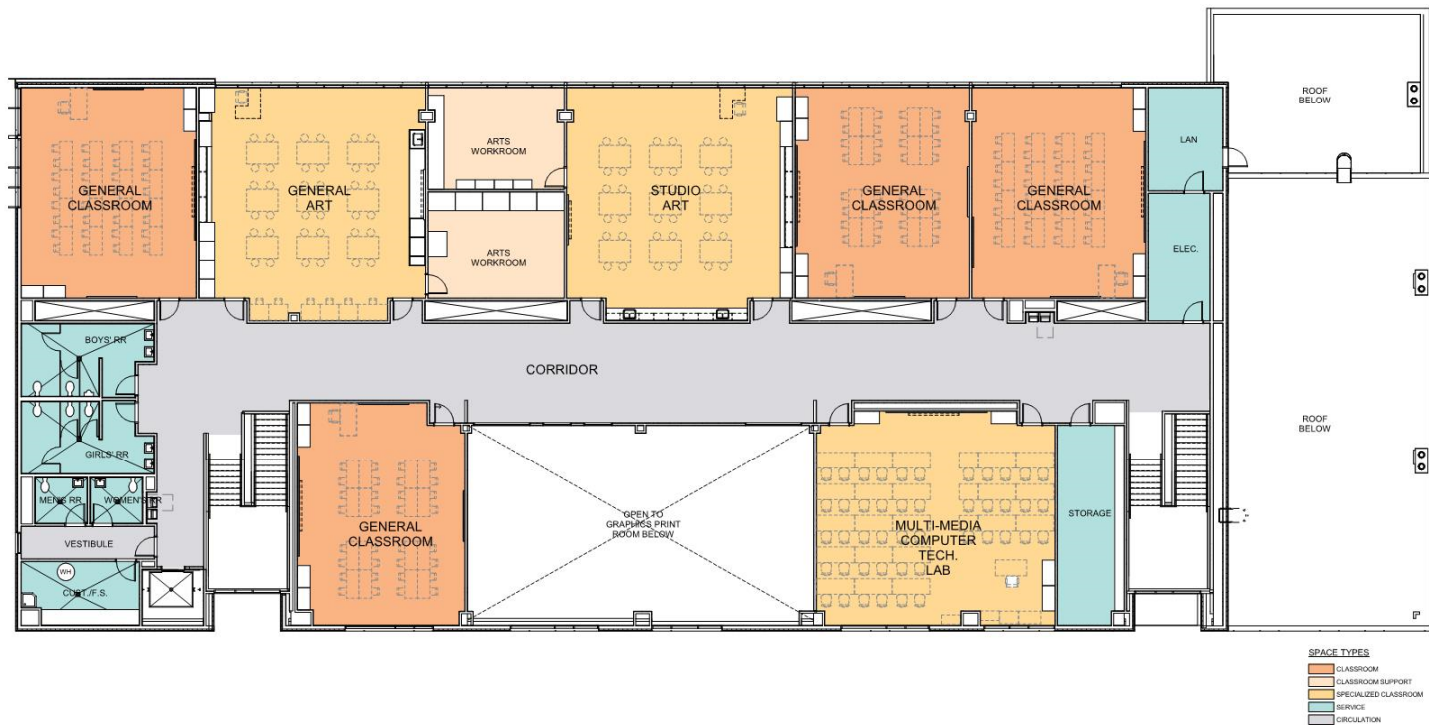


Transforming the Existing Schools of Los Angeles

Los Angeles Unified School District's Comprehensive Modernization Program



LearningSCAPES 2019

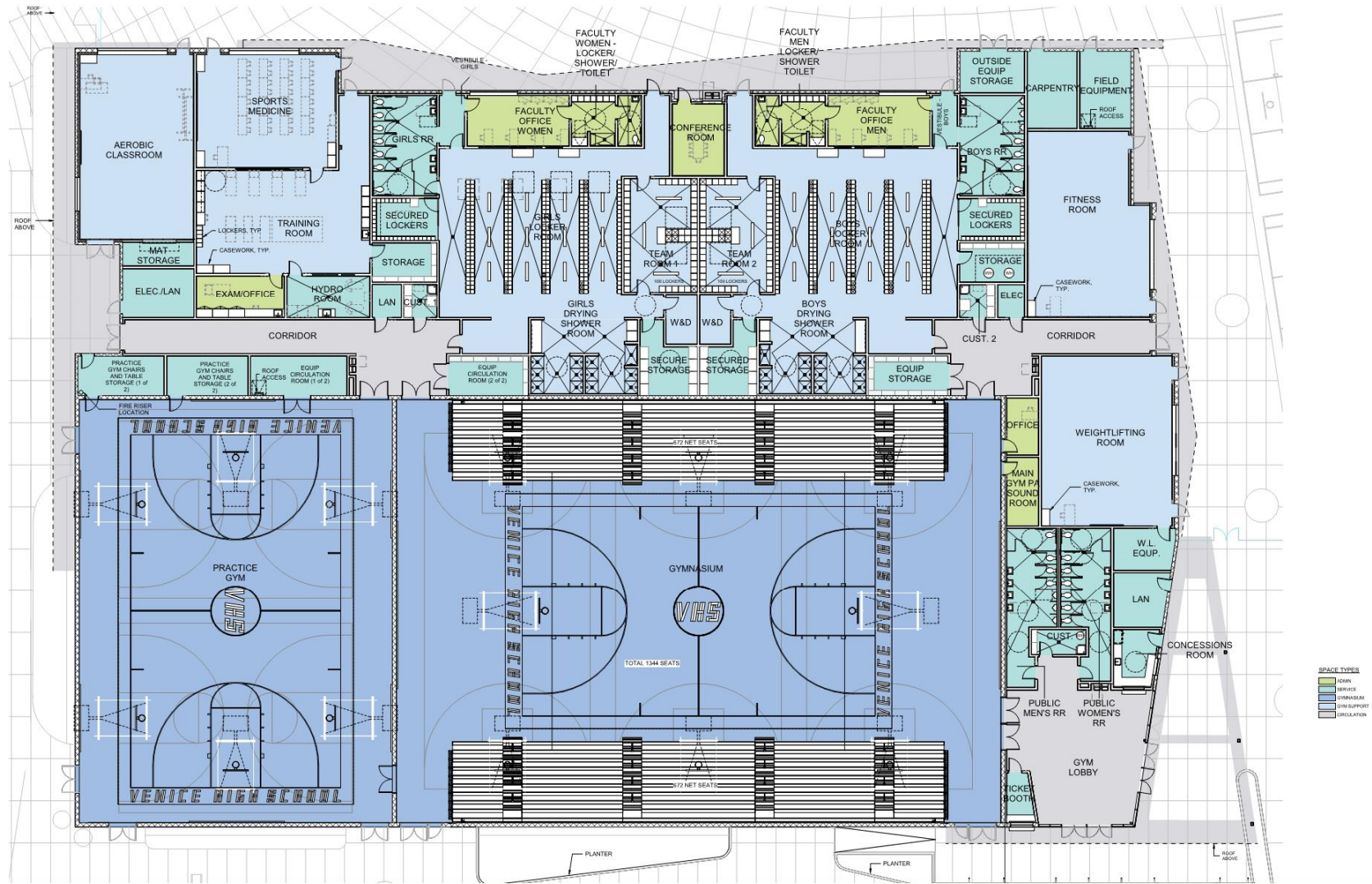










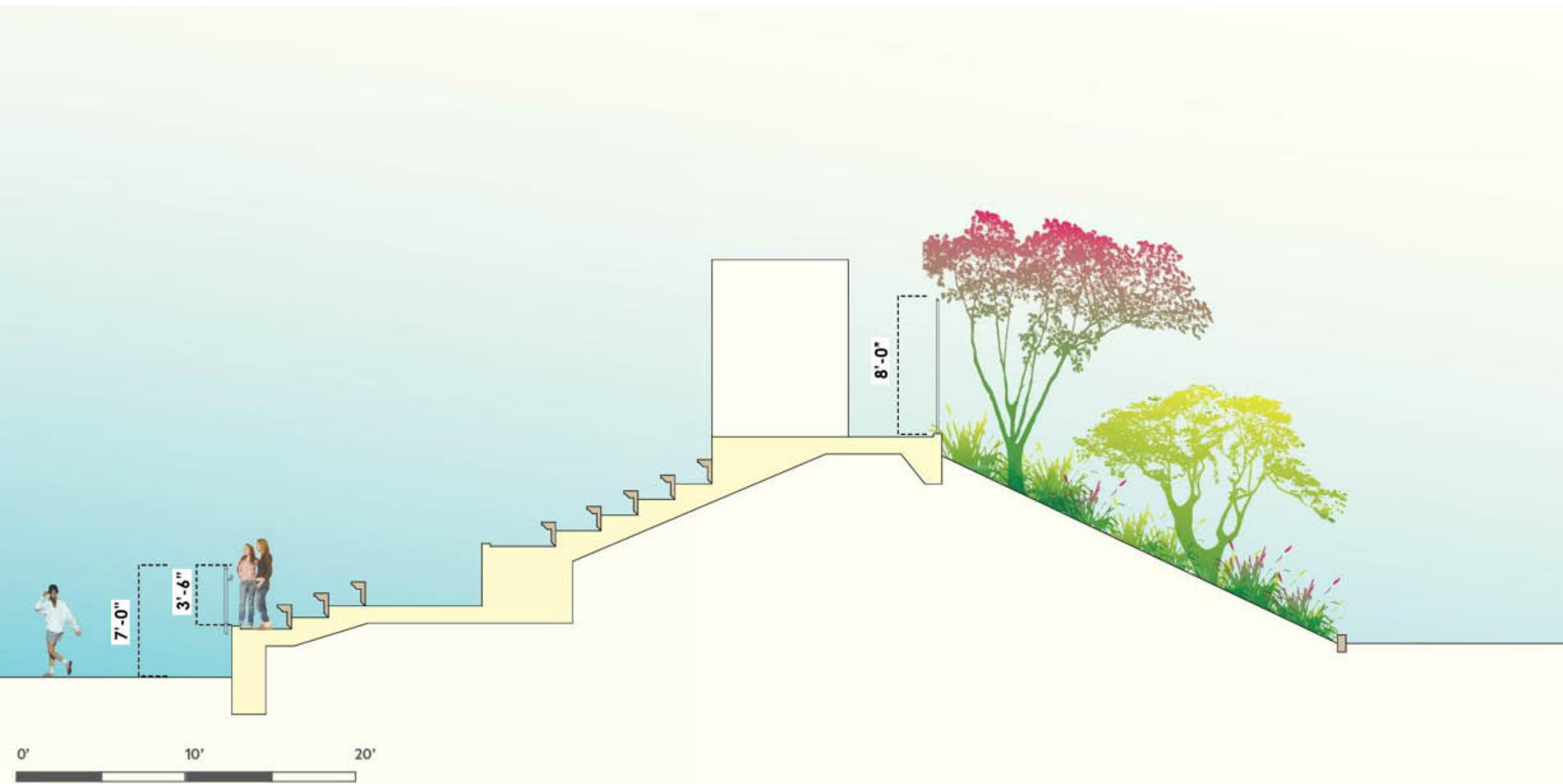


Transforming the Existing Schools of Los Angeles

Los Angeles Unified School District's Comprehensive Modernization Program

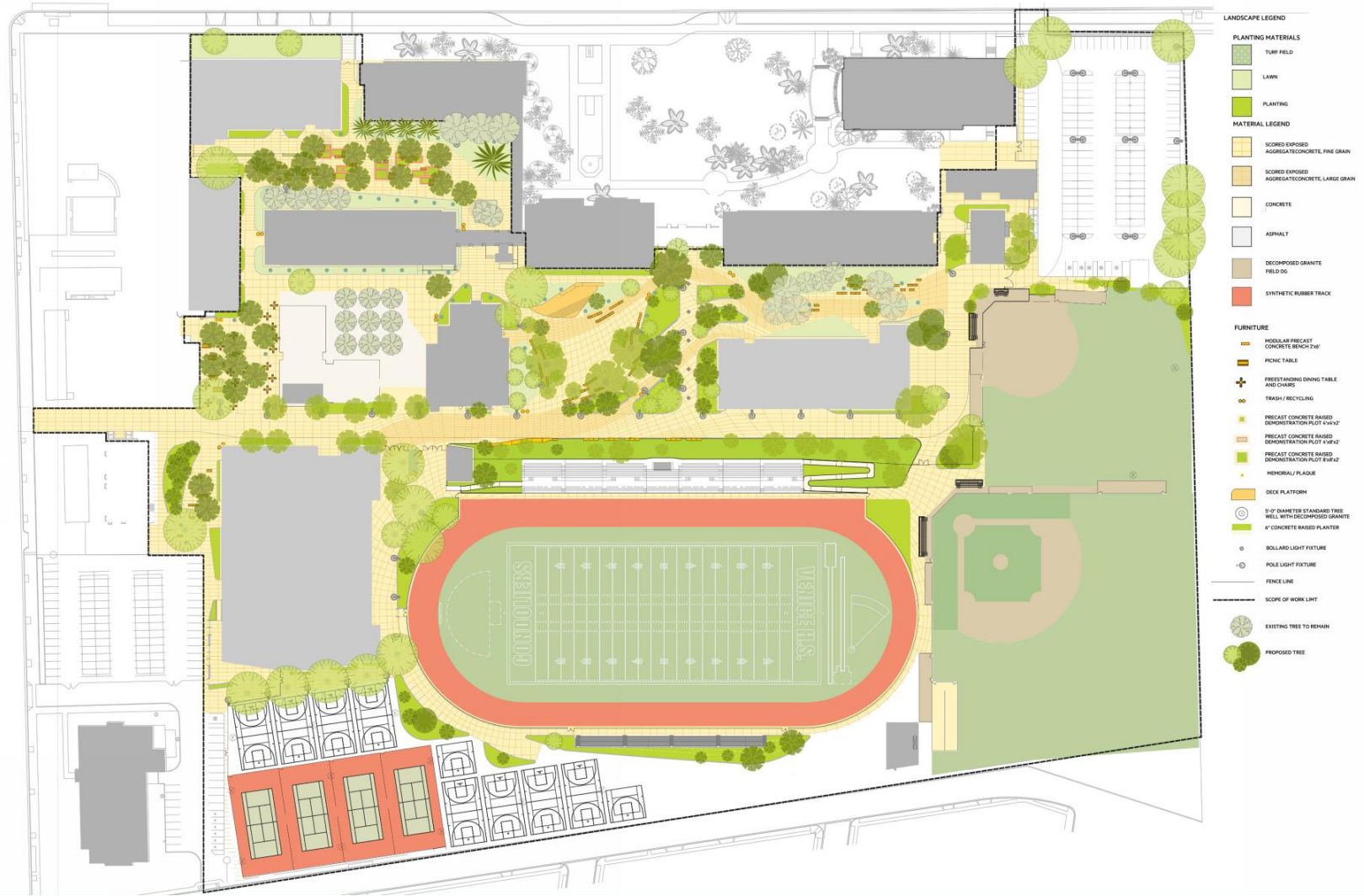


LearningSCAPES 2019









LESSONS LEARNED

Leveraging the landscape



Transforming the Existing Schools of Los Angeles
Los Angeles Unified School District's Comprehensive Modernization Program



LearningSCAPES 2019

PRESENTING TEAM



Julia Eiko Hawkinson, Los Angeles Unified School District



Michael Pinto, NAC Architecture



Jorge de la Cal, CO Architects



Sandy Kate, HMC Architects



Transforming the Existing Schools of Los Angeles
Los Angeles Unified School District's Comprehensive Modernization Program



LearningSCAPES 2019

NORTH HOLLYWOOD HIGH SCHOOL COMPLETE MODERNIZATION





NORTH HOLLYWOOD
HIGH SCHOOL
FALL 1950

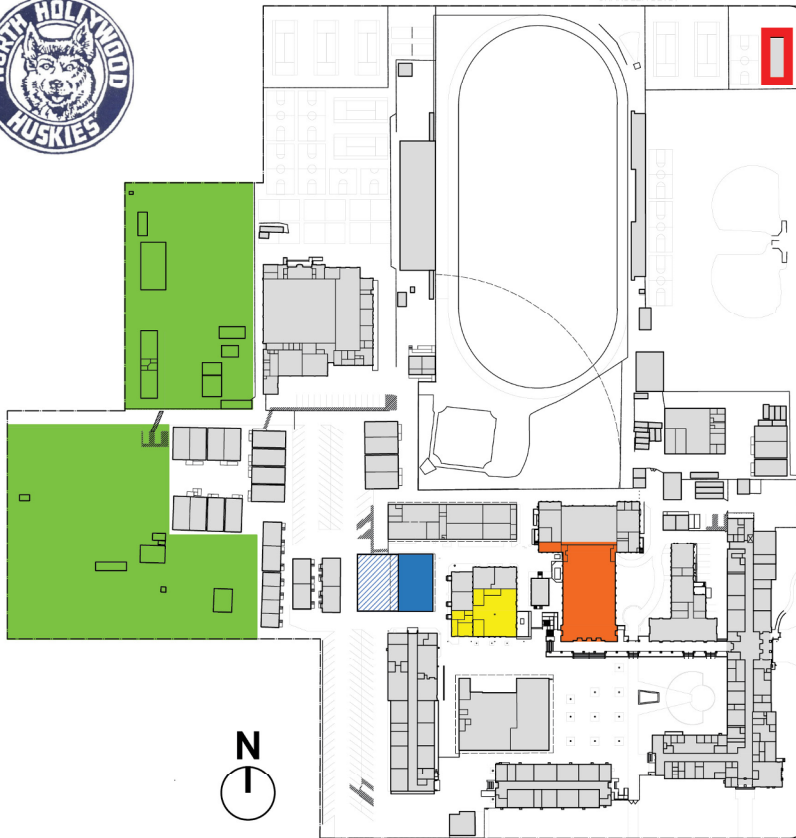


Transforming the Existing Schools of Los Angeles
Los Angeles Unified School District's Comprehensive Modernization Program



LearningSCAPES 2019

SPECIAL SCHOOL PROGRAMS AND ACADEMIC ACHIEVEMENTS



RECENT ACADEMIC ACHIEVEMENTS

- LADWP SCIENCE BOWL #1 IN L.A. 2015 & 2017
- SCIENCE OLYMPIAD 1ST PLACE IN LA COUNTY 2015
- CYBER DEFENSE 2ND & 5TH IN THE NATION 2015
- BEST & BRIGHTEST NATION'S TOP-RANKING ACADEMIC TEAMS 2015
- SCIENCE BOWL NATIONAL FINALS 2015

OTHER SPECIAL PROGRAMS ON CAMPUS:

- HIGHLY GIFTED MAGNET
- ZOO MAGNET (OFF-SITE)
- FRESHMAN ACADEMY
- HOME ENGINEERING ACADEMY
- HUMANITIES SAS

ARTS, MEDIA, & ENTERTAINMENT

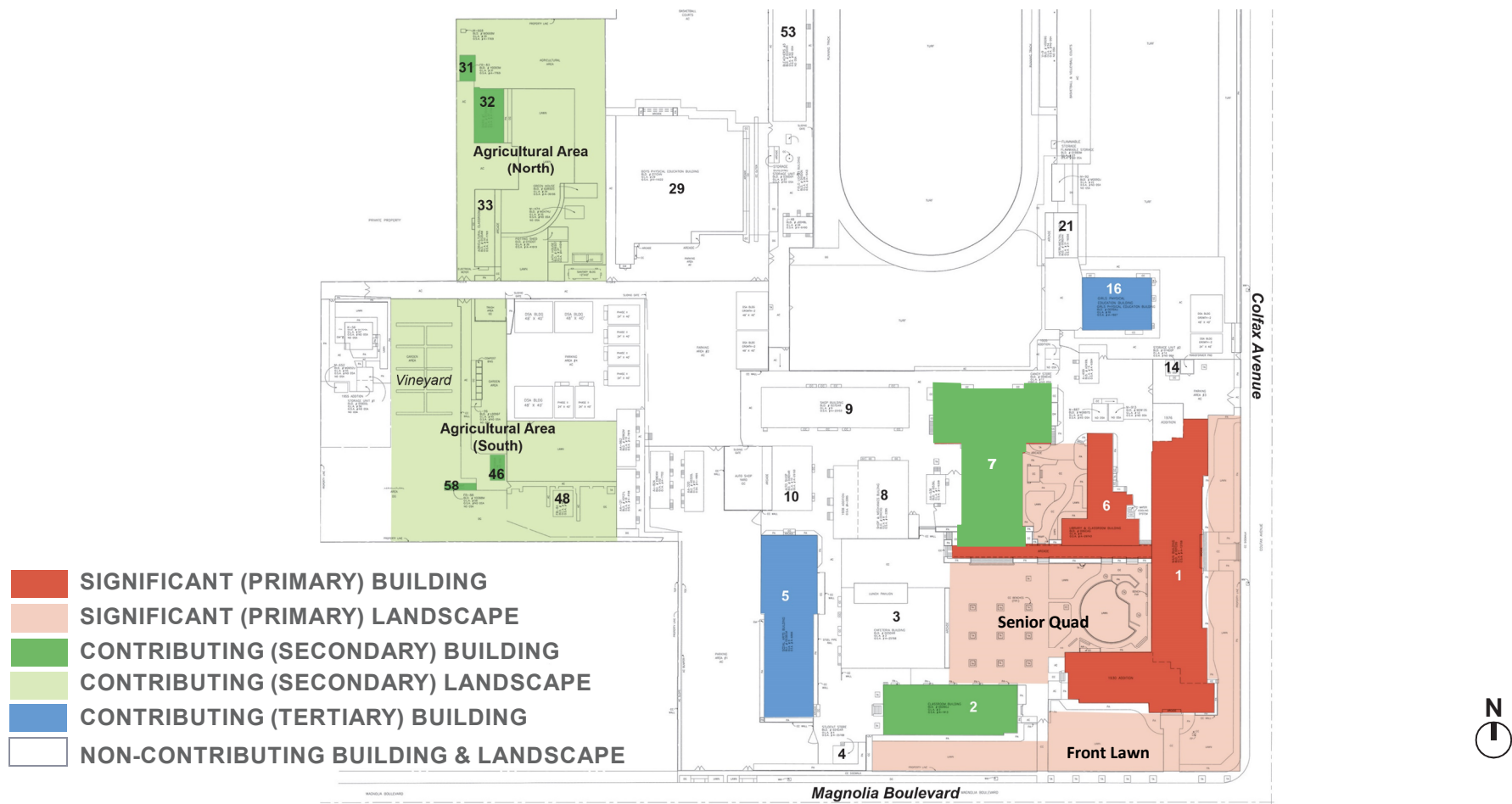
AGRICULTURE & NATURAL RESOURCES

TRANSPORTATION

AMELIA EARHART CONTINUATION
HIGH SCHOOL 1973

BUILDING & CONSTRUCTION TRADES

CHARACTER-DEFINING CAMPUS FEATURES



Transforming the Existing Schools of Los Angeles
Los Angeles Unified School District's Comprehensive Modernization Program



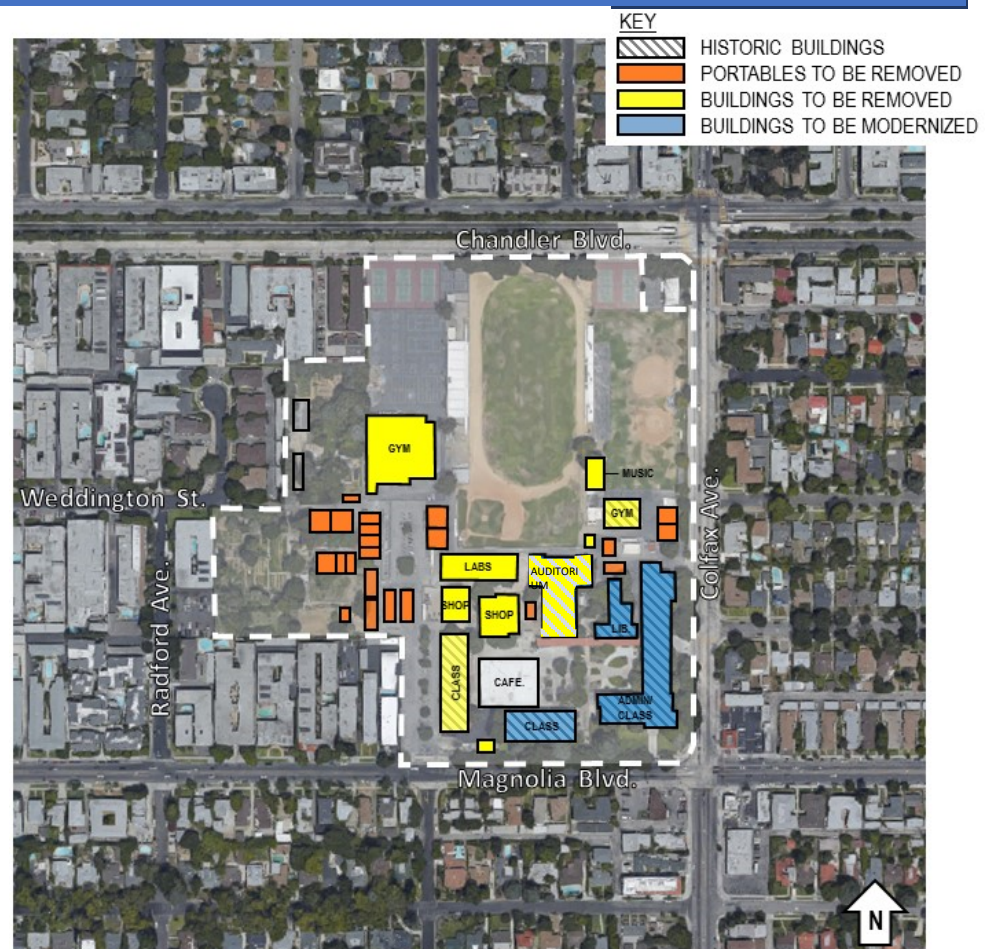
LearningSCAPES 2019

North Hollywood High School

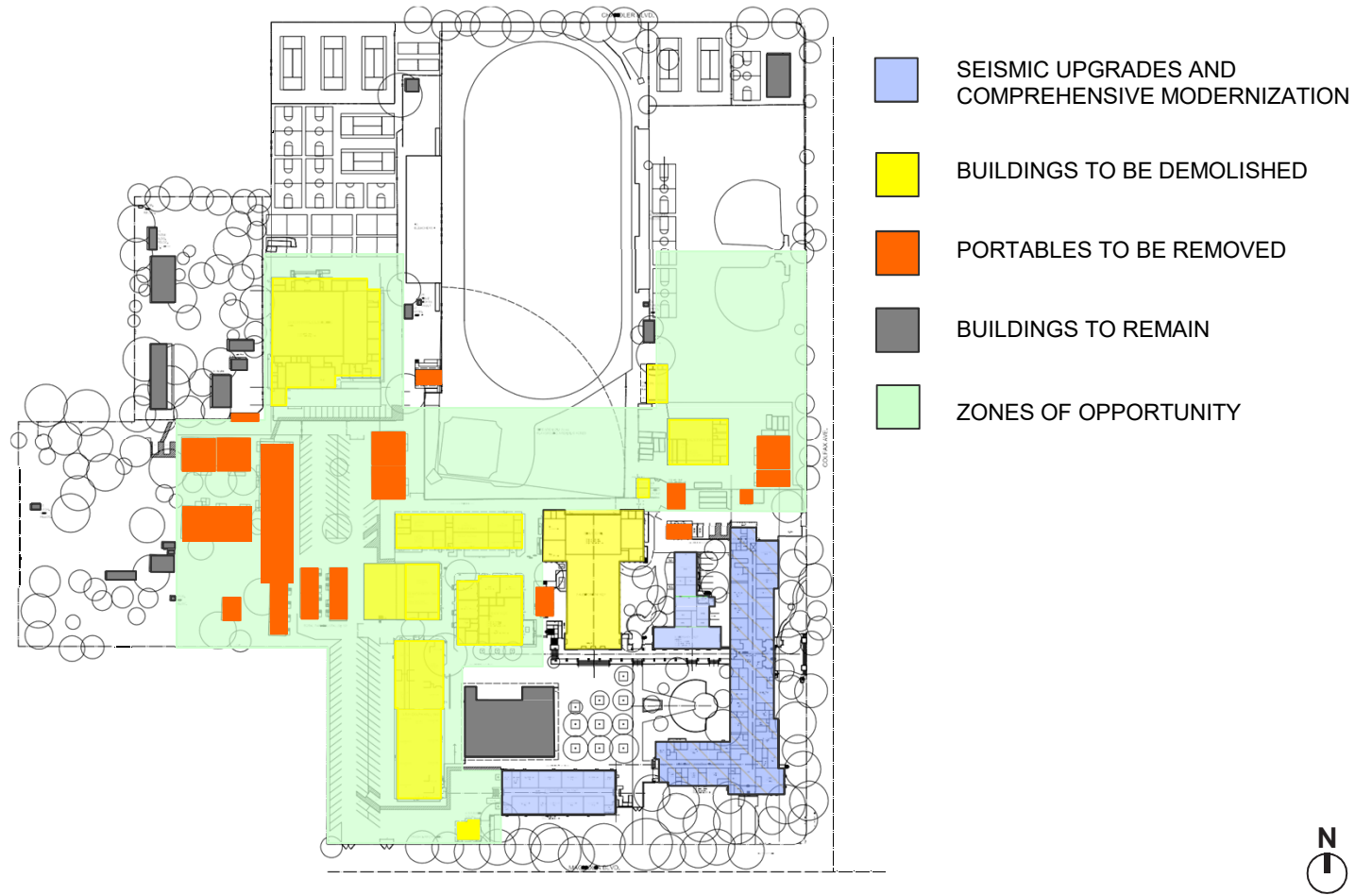
Approved Project Definition

Scope of Work

- **Building Upgrades**
 - Administration Building
 - Classroom Buildings
 - Library
- **New Building(s) to be Constructed**
 - Classrooms
 - Gymnasium
 - Auditorium
- **Site Work**
 - Parking
 - Site Infrastructure
 - Exterior Paint
 - Landscape & Hardscape
 - Accessibility



SCOPE OF WORK



SITE PLAN



Transforming the Existing Schools of Los Angeles
Los Angeles Unified School District's Comprehensive Modernization Program



LearningSCAPES 2019

NEW CLASSROOM BUILDING



Transforming the Existing Schools of Los Angeles
Los Angeles Unified School District's Comprehensive Modernization Program

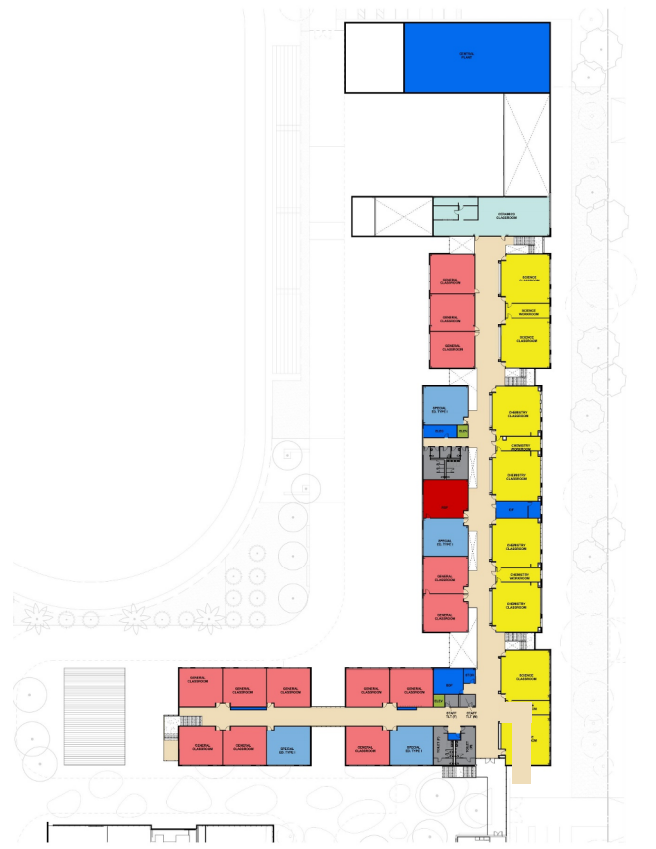


LearningSCAPES 2019

NEW CLASSROOM BUILDING



LEVEL 1



LEVEL 2

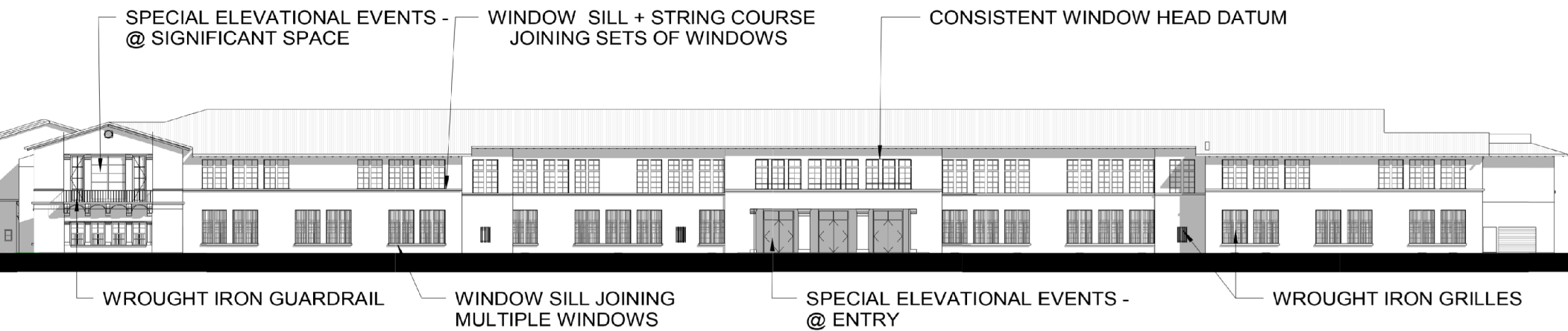
- BUILDING USE LEGEND**
- ADMINISTRATION
 - ADMINISTRATION REMODEL
 - CAMPUS SUPPORT
 - CIRCULATION
 - ELEVATOR
 - GENERAL CLASSROOM
 - OPERATIONAL SUPPORT
 - SCIENCE CLASSROOM
 - SCIENCE LAB - SUPPORT
 - SPECIAL EDUCATION
 - SPECIAL EDUCATION - SUPPORT
 - SPECIALTY CLASSROOM
 - SPECIALTY CLASSROOM - SUPPORT
 - STAIR
 - STUDENT SUPPORT
 - TOILET



Transforming the Existing Schools of Los Angeles
 Los Angeles Unified School District's Comprehensive Modernization Program



ORIGINAL ADMIN / CLASSROOM BUILDING



ORIGINAL WITH NEW CLASSROOM BUILDING



AGRICULTURAL WALK TOWARDS NEW CLASSROOM BUILDING

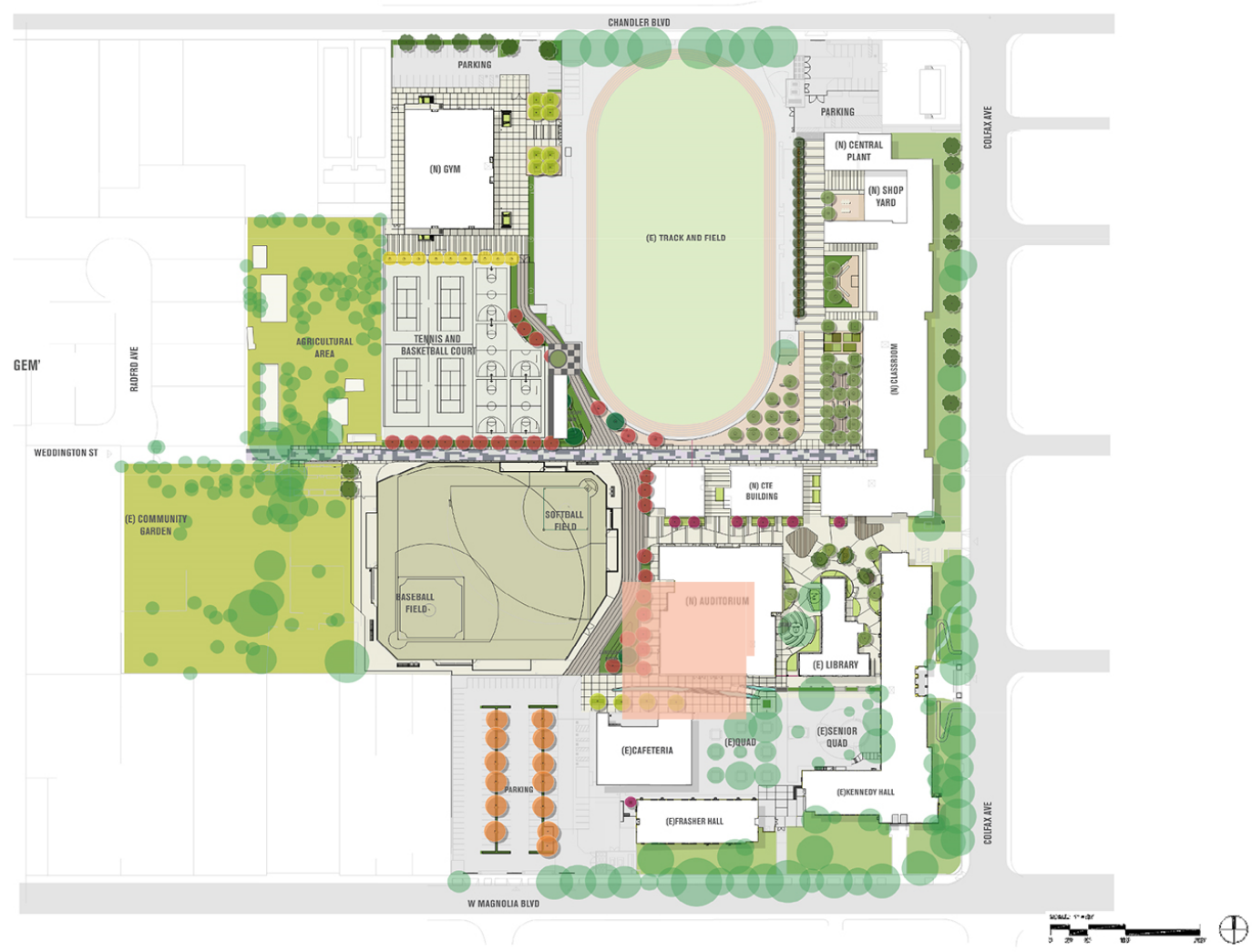


Transforming the Existing Schools of Los Angeles
Los Angeles Unified School District's Comprehensive Modernization Program



LearningSCAPES 2019

NEW AUDITORIUM



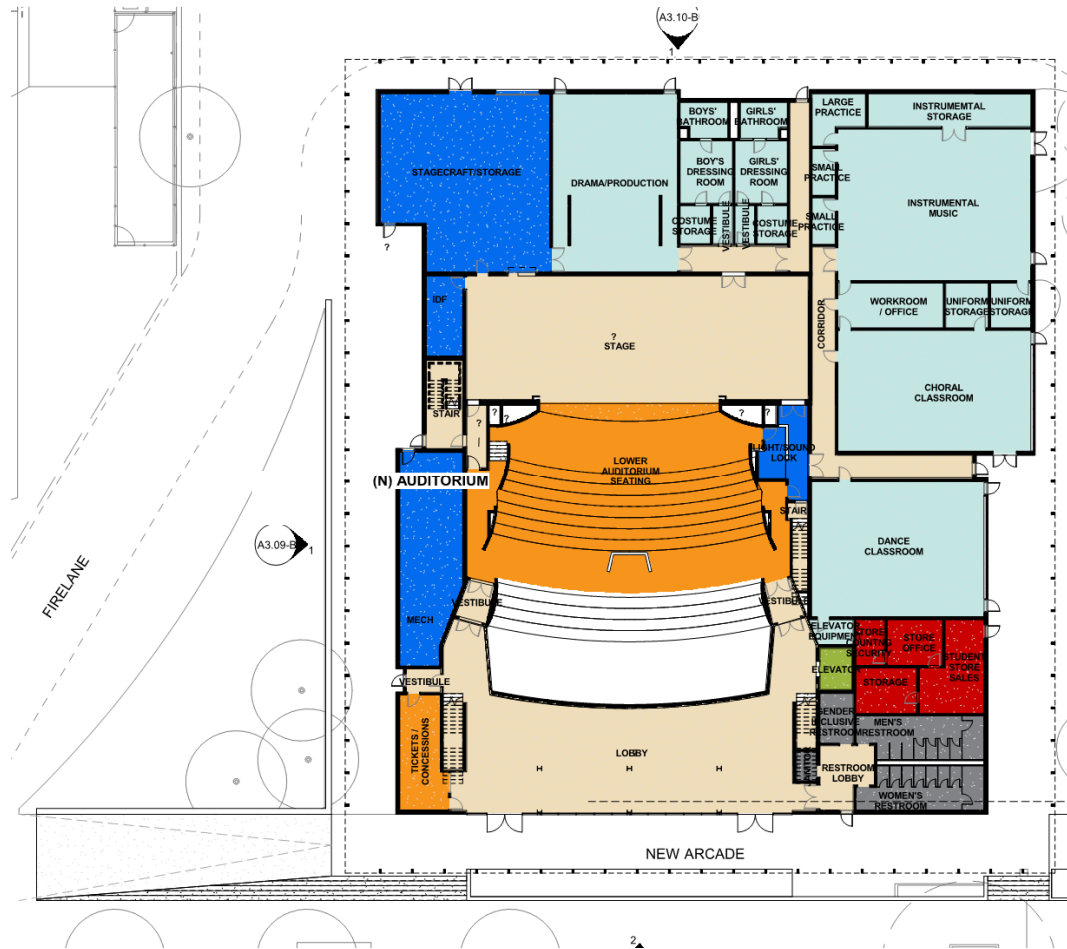
Transforming the Existing Schools of Los Angeles
Los Angeles Unified School District's Comprehensive Modernization Program



LearningSCAPES 2019



NEW AUDITORIUM



BUILDING USE LEGEND

- ADMINISTRATION
- ADMINISTRATION REMODEL
- CAMPUS SUPPORT
- CIRCULATION
- ELEVATOR
- GENERAL CLASSROOM
- OPERATIONAL SUPPORT
- SCIENCE CLASSROOM
- SCIENCE LAB - SUPPORT
- SPECIAL EDUCATION
- SPECIAL EDUCATION - SUPPORT
- SPECIALTY CLASSROOM
- SPECIALTY CLASSROOM - SUPPORT
- STAIR
- STUDENT SUPPORT
- TOILET



Transforming the Existing Schools of Los Angeles
Los Angeles Unified School District's Comprehensive Modernization Program



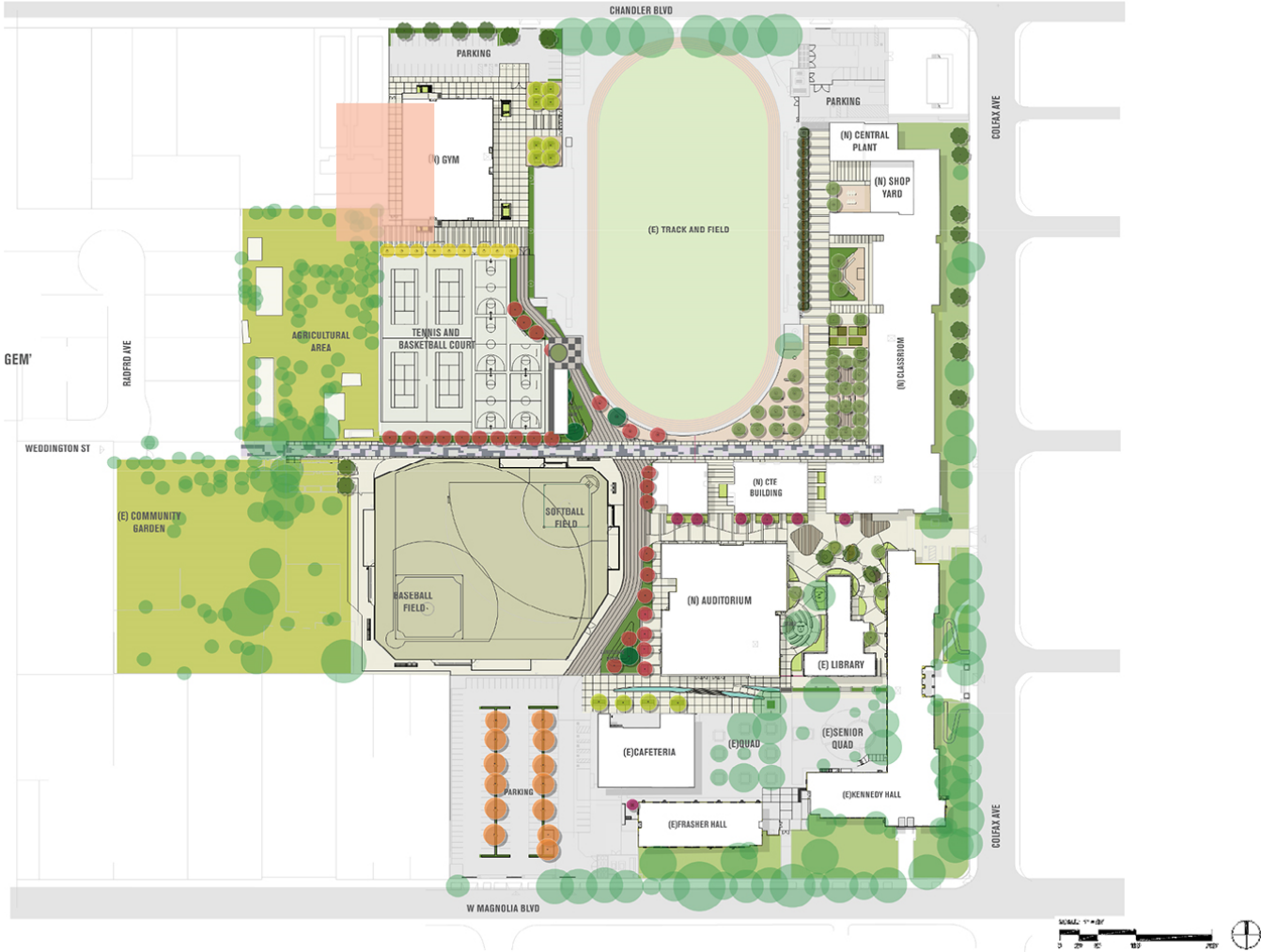
LearningSCAPES 2019







NEW GYMNASIUM



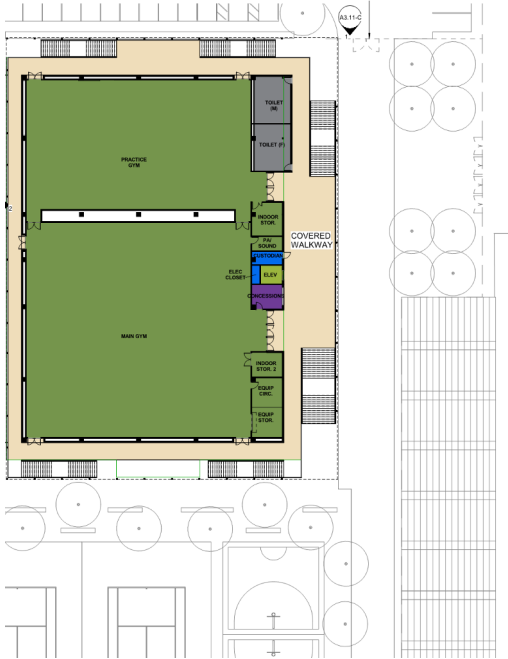
EXISTING GYM



NEW GYMNASIUM



LEVEL 1



LEVEL 2

BUILDING USE LEGEND

- ADMINISTRATION
- CIRCULATION
- ELEVATOR
- FOOD SERVICE
- GENERAL CLASSROOM
- GYM
- OPERATIONAL SUPPORT
- SCIENCE CLASSROOM
- SCIENCE LAB - SUPPORT
- SPECIAL EDUCATION
- SPECIALTY CLASSROOM
- SPECIALTY CLASSROOM - SUPPORT
- TOILET



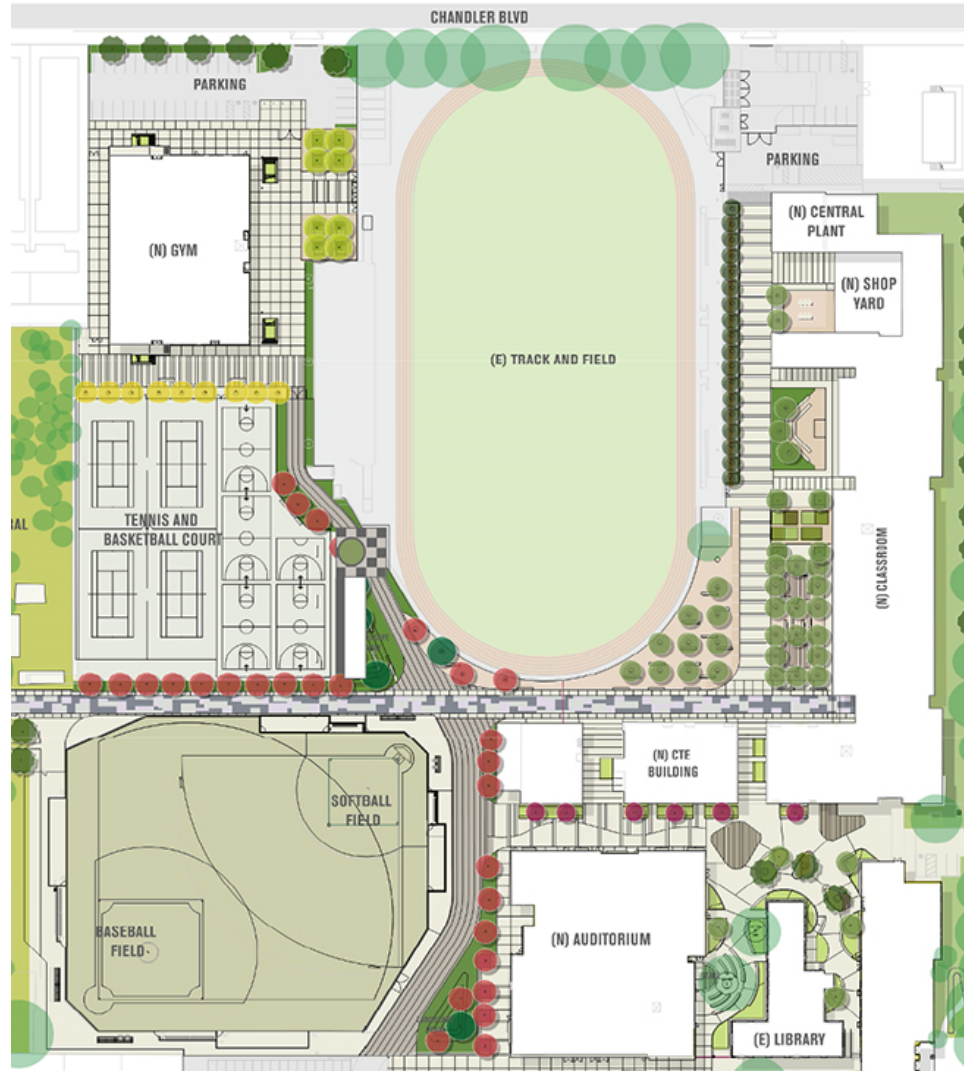
Transforming the Existing Schools of Los Angeles
Los Angeles Unified School District's Comprehensive Modernization Program



LearningSCAPES 2019



ATHLETICS & PE FACILITIES

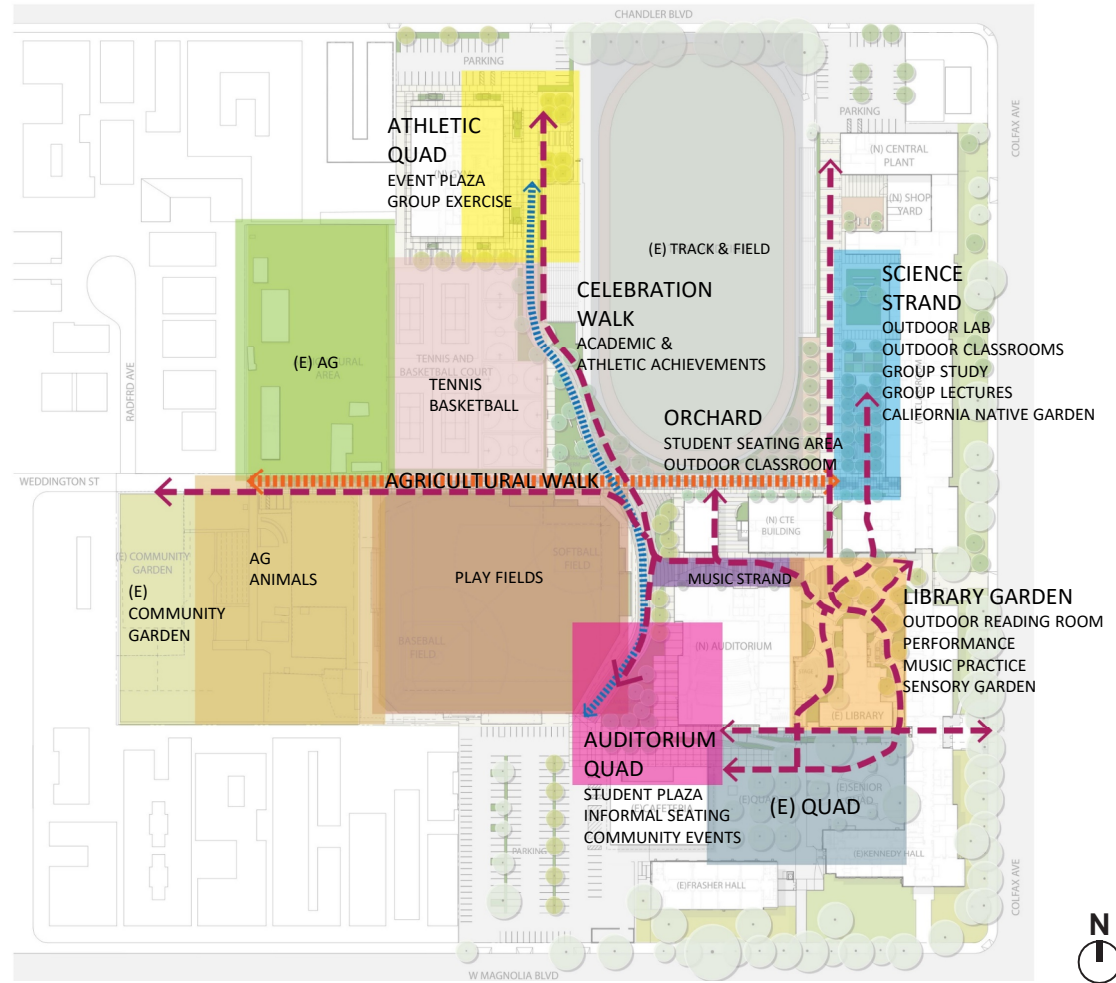
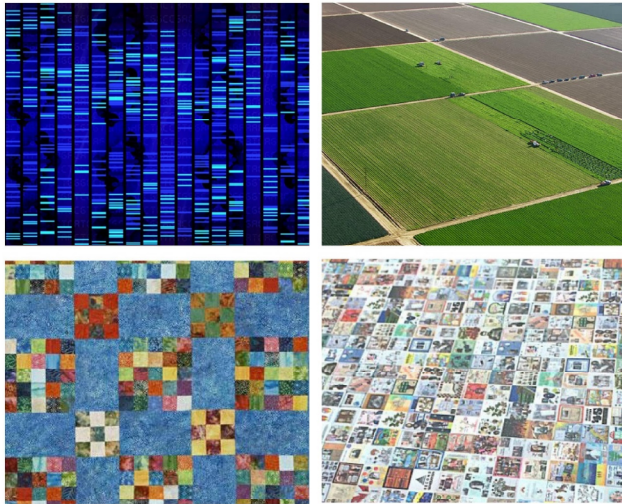


Transforming the Existing Schools of Los Angeles
Los Angeles Unified School District's Comprehensive Modernization Program



LearningSCAPES 2019

LANDSCAPE CONCEPT DISTRICTS & CONNECTIONS



SITE PLAN



Transforming the Existing Schools of Los Angeles
Los Angeles Unified School District's Comprehensive Modernization Program



LearningSCAPES 2019

LIBRARY GARDEN (VIEW FROM LIBRARY TOWARDS AUDITORIUM AND QUAD)



MUSIC STRAND



LESSONS LEARNED

Leveraging the landscape

Design for the next 100 years



Transforming the Existing Schools of Los Angeles
Los Angeles Unified School District's Comprehensive Modernization Program



LearningSCAPES 2019

PRESENTING TEAM



Julia Eiko Hawkinson, Los Angeles Unified School District



Michael Pinto, NAC Architecture



Jorge de la Cal, CO Architects

HMC Architects

Sandy Kate, HMC Architects

Transforming the Existing Schools of Los Angeles
Los Angeles Unified School District's Comprehensive Modernization Program



LearningSCAPES 2019



THOMAS JEFFERSON HIGH SCHOOL



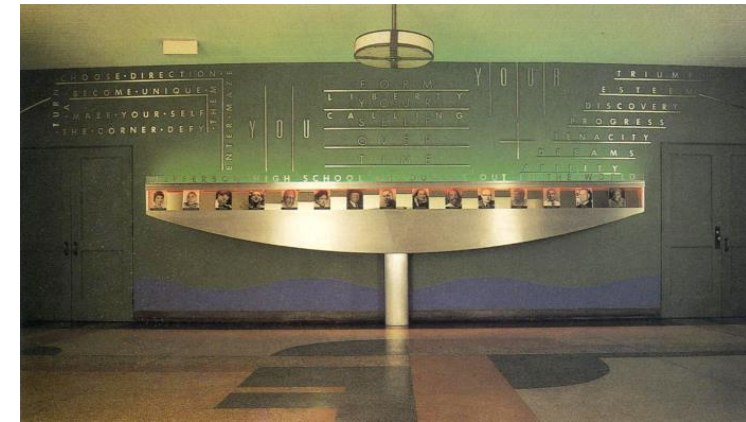
Transforming the Existing Schools of Los Angeles
Los Angeles Unified School District's Comprehensive Modernization Program



LearningSCAPES 2019



CHARACTER-DEFINING CAMPUS FEATURES



Transforming the Existing Schools of Los Angeles
Los Angeles Unified School District's Comprehensive Modernization Program



LearningSCAPES 2019

NORTH - 33th Street

LOW/MEDIUM RESIDENTIAL & CLINIC - TERTIARY (LOCAL) STREET

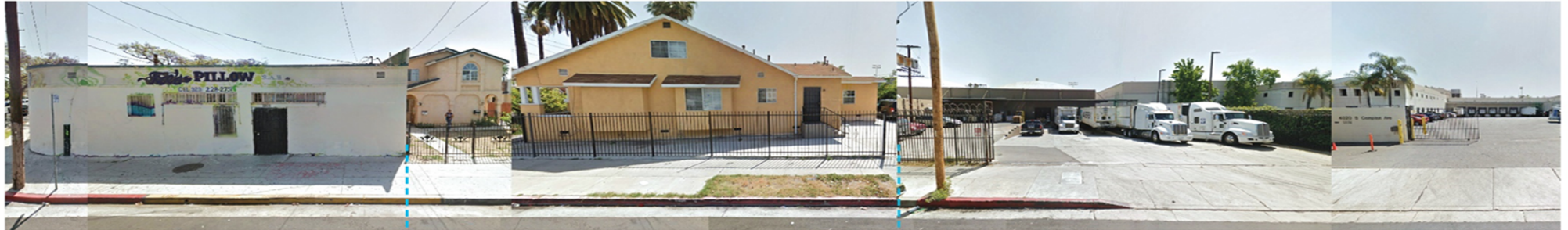


LOW/MEDIUM RESIDENTIAL

LAUSD COMMUNITY HEALTH CLINIC

EAST - Compton Ave

LOW/MEDIUM RESIDENTIAL & RETAIL - PRIMARY STREET



RETAIL

LOW/MEDIUM RESIDENTIAL

INDUSTRIAL

Surrounding Area

HMC Architects

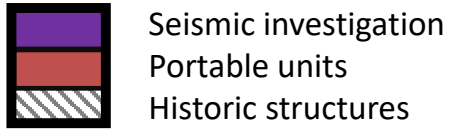


Transforming the Existing Schools of Los Angeles
Los Angeles Unified School District's Comprehensive Modernization Program



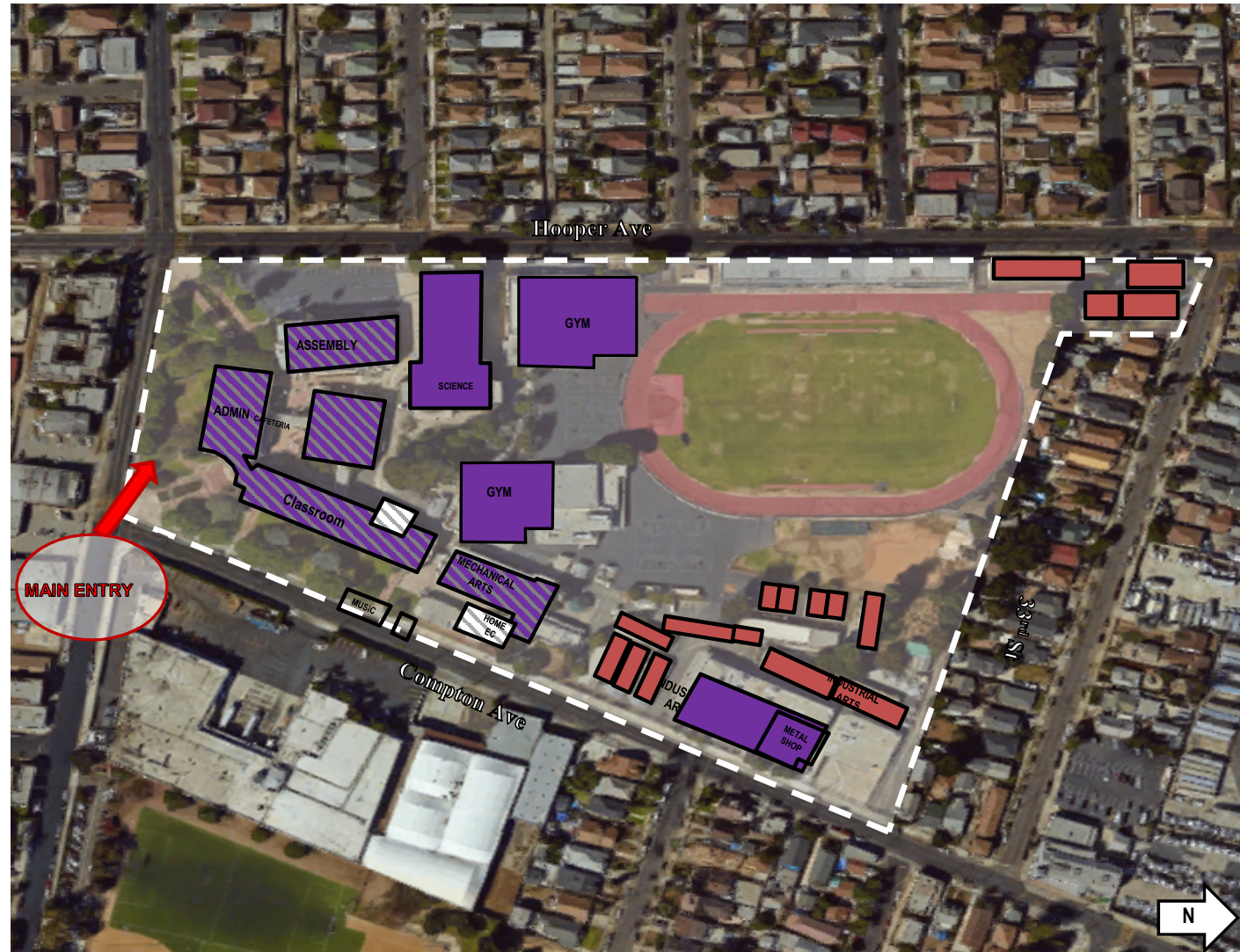
LearningSCAPES 2019

SITE ANALYSIS



MAJOR FINDINGS

- Seismic Evaluation
 - 7 building require upgrades
- 30 % classrooms in portables
- Poor campus infrastructure
- Security upgrades needed
- Athletic facilities limited
- Site parking below standard



Transforming the Existing Schools of Los Angeles
Los Angeles Unified School District's Comprehensive Modernization Program



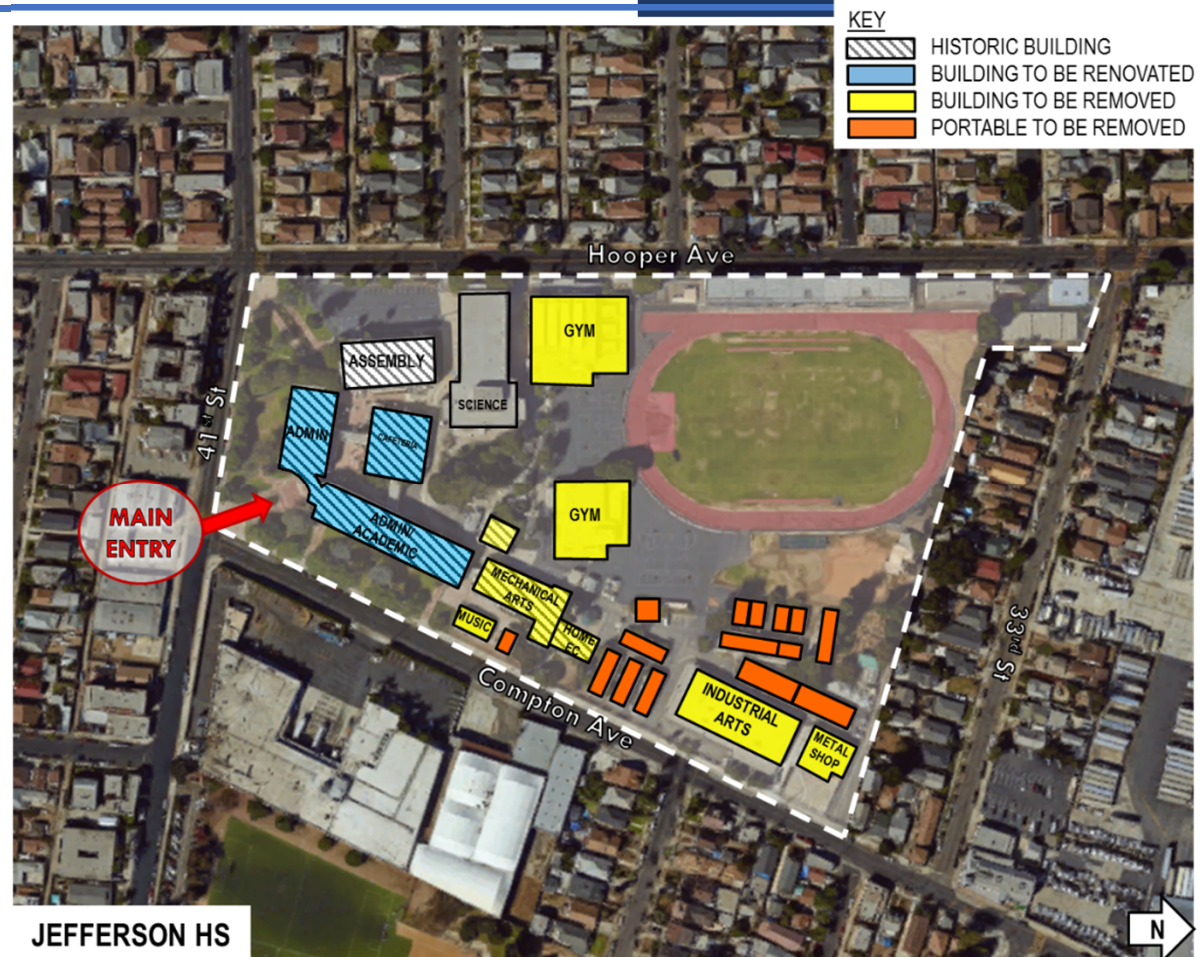
LearningSCAPES 2019

Jefferson High School

Approved Project Definition

Scope of Work

- **Major Building Upgrades**
 - Administration/Library
 - Classroom Building
 - Cafeteria
- **New Building(s) to be Constructed**
 - Classrooms
 - Gymnasium
- **Site Work**
 - Parking
 - Site Infrastructure
 - Baseball/Softball Field
 - Tennis Courts
 - Landscape & Hardscape
 - Accessibility



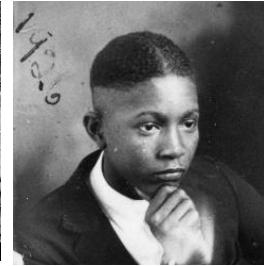
CAMPUS DESIGN

- A** Administration/Classroom + Library
- B** Auditorium
- C** Cafeteria
- D** Science Building
- E** New Athletics Building
- F** New Classroom Building
- G** Stadium



A RICH HERITAGE

- One of LAUSD's earliest high schools still in operation
- Rich in history + pride
- Contributions locally + globally in
 - Art
 - Music
 - Theatre
 - Dance
 - Athletics
 - Civil Rights
 - Civil Service



Alumni include:

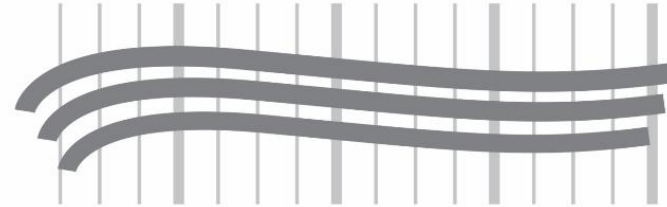
- Nobel Peace Prize Winner Ralph Bunche
- Legendary dance choreographer Alvin Ailey
- Olympian + Athletes Emmett Ashford, Charles Dumas. Woody Strode, + Mal Whitfield
- Music Professionals Etta James, Barry White, Art Farmer, + Dexter Gordon

DESIGN CONCEPT

Speaking to the Story

- Heritage + Future
- Movement + Measure
- Streamline Moderne

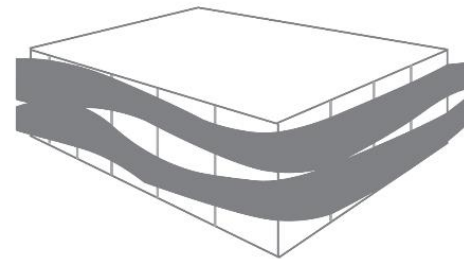
Movement / Measurement



Athletics



The Arts





NORTH ELEVATION - 1



NORTH ELEVATION - 2

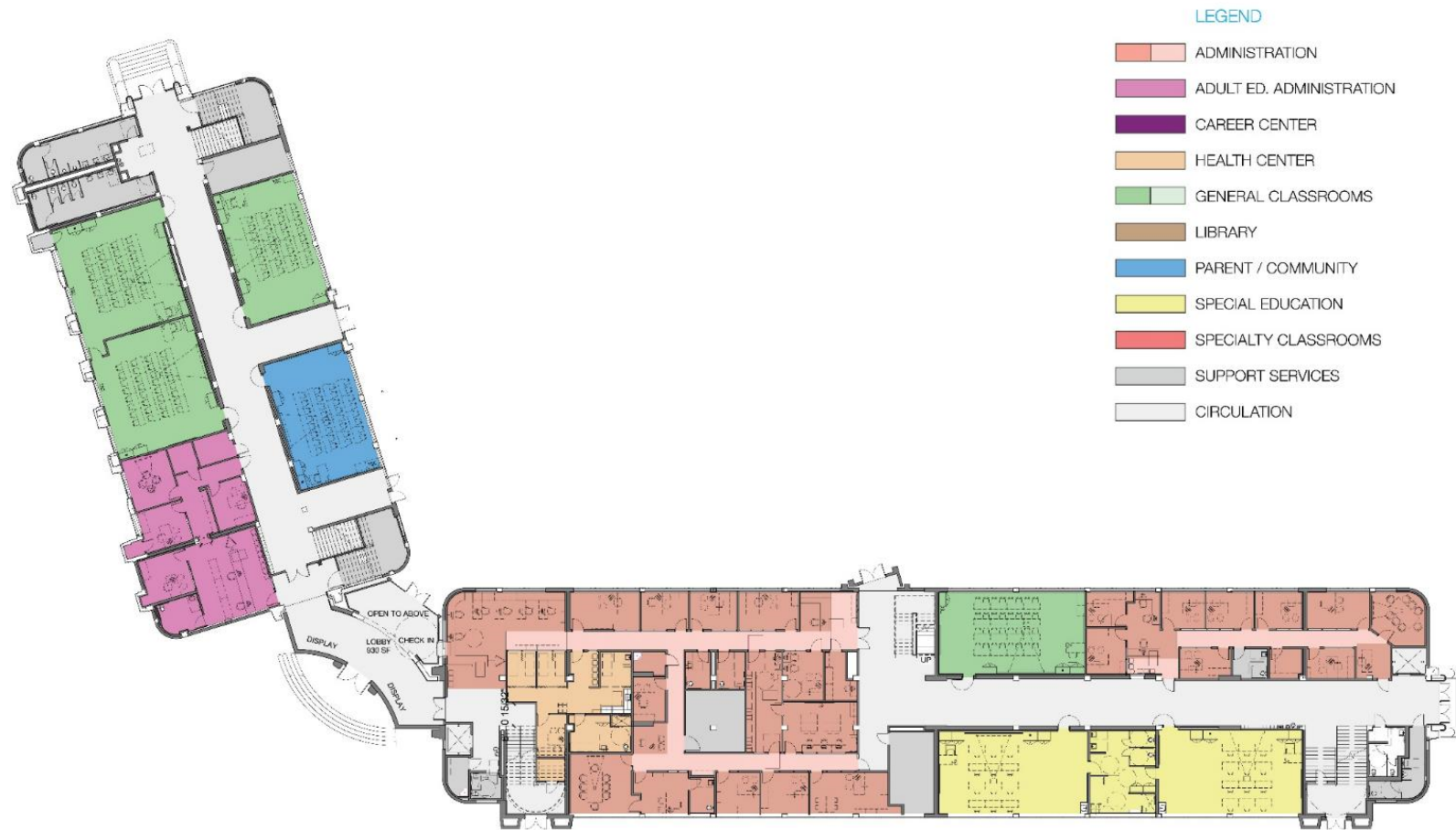


EAST ELEVATION

A1 & A2 | Building Modernization - Exterior Elevations

ADMINISTRATION/CLASSROOM + LIBRARY BUILDING





A1 Classroom & A2 Administration Building - First Floor Plan



Transforming the Existing Schools of Los Angeles
Los Angeles Unified School District's Comprehensive Modernization Program



LearningSCAPES 2019



A1 Classroom & A2 Administration Building - Second Floor Plan



Transforming the Existing Schools of Los Angeles
Los Angeles Unified School District's Comprehensive Modernization Program



LearningSCAPES 2019

NEW CLASSROOM BUILDING





D | New Classroom Building - First Floor Plan





Transforming the Existing Schools of Los Angeles
Los Angeles Unified School District's Comprehensive Modernization Program



LearningSCAPES 2019



LEGEND

	WELLNESS CLINIC		SPECIAL EDUCATION
	GENERAL CLASSROOMS		VISUAL ARTS
	SPECIALTY CLASSROOMS		SUPPORT SERVICES
	SCIENCE LABS		CIRCULATION

D | New Classroom Building - Second Floor Plan



Transforming the Existing Schools of Los Angeles
Los Angeles Unified School District's Comprehensive Modernization Program



LearningSCAPES 2019



 **Transforming the Existing Schools of Los Angeles**
Los Angeles Unified School District's Comprehensive Modernization Program



LearningSCAPES 2019

NEW ATHLETICS BUILDING – WITH PERFORMING ARTS INSTRUCTIONAL SPACE





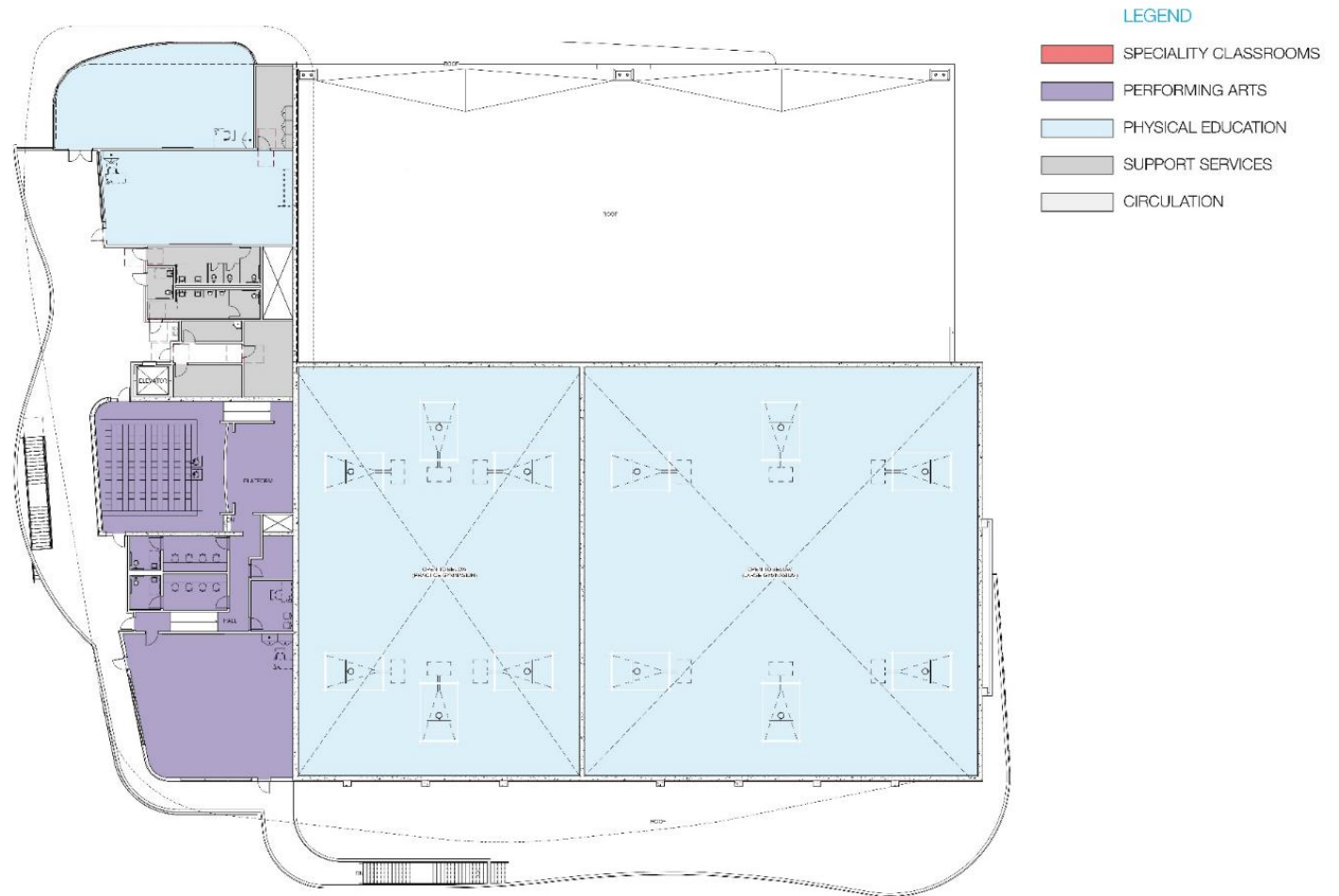
E | New Athletics Building - First Floor Plan



Transforming the Existing Schools of Los Angeles
Los Angeles Unified School District's Comprehensive Modernization Program



LearningSCAPES 2019



E | New Athletics Building - Second Floor Plan









Lessons Learned

Leveraging the landscape

Design for the next 100 years

Plan to transform the campus

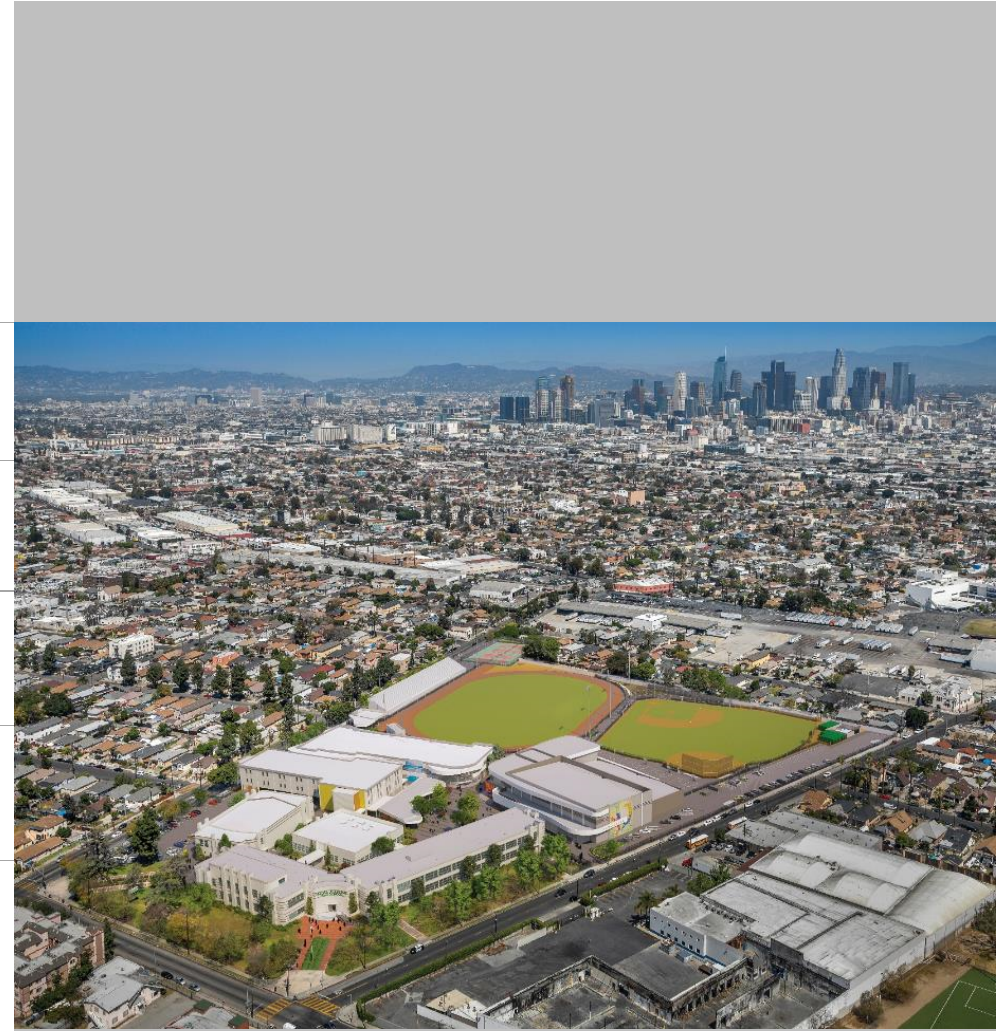


Lessons Learned

Leveraging the landscape

Design for the next 100 years

Plan to transform the campus





Julia Eiko Hawkinson, Los Angeles Unified School District



Michael Pinto, NAC Architecture



Jorge de la Cal, CO Architects



Sandy Kate, HMC Architects



Transforming the Existing Schools of Los Angeles
Los Angeles Unified School District's Comprehensive Modernization Program



LearningSCAPES 2019