



Culture + History

School + Community

Roosevelt High School
Boyle Heights, CA

Lanier High School
Westside, San Antonio

Presenters



Stephanie Matsuda-Strand
Project Designer
LEED AP BD+C
LPA



Julia Eiko Hawkinson
Senior Facilities Development Manager
AIA, ALEP, LEED AP BD+C, O+M, WELL AP
LAUSD



Federico Cavazos
Associate, Project Architect
AIA, LEED AP BD+C
LPA



Kedrick Wright
Director of Planning and Construction
LEED AP
SAISD





Learning Objectives

- Understand how to develop a community based foundational vision.
- Become familiar with how to translate that vision into a basis of design.
- Communicate the value of a transparent process that harnesses the values of diverse stakeholders.



How can design enhance and celebrate the culture of existing schools with deep historical roots?

[...or *any* school, for that matter]

Roosevelt High School

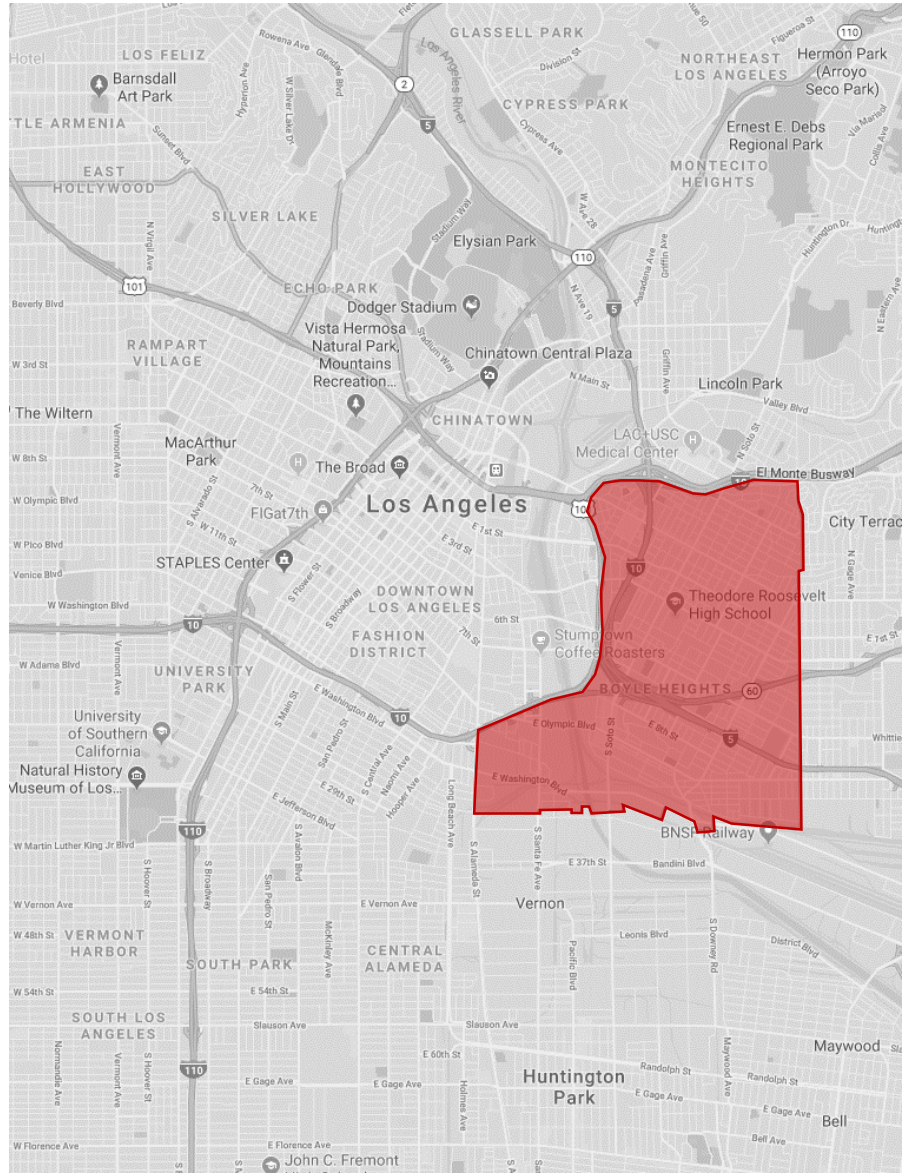
Boyle Heights, CA.

Roosevelt High School was built in 1922 in Boyle Heights, one of the oldest neighborhoods in Los Angeles, CA. With a rich history of immigrant groups, artwork, murals and gardens tell their stories. These artifacts are the backdrop to the community and to the school.



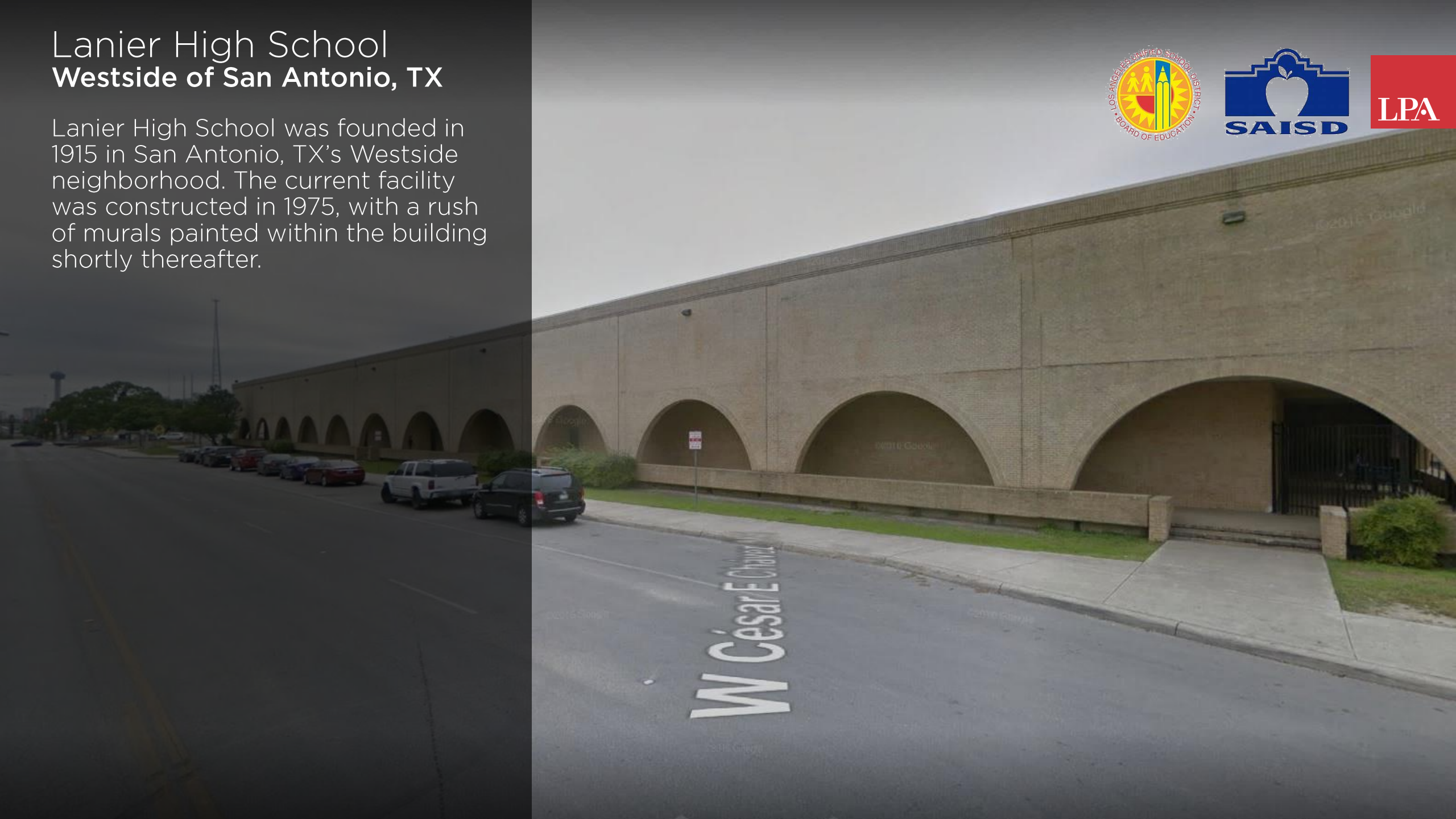
Roosevelt High School

Boyle Heights, CA

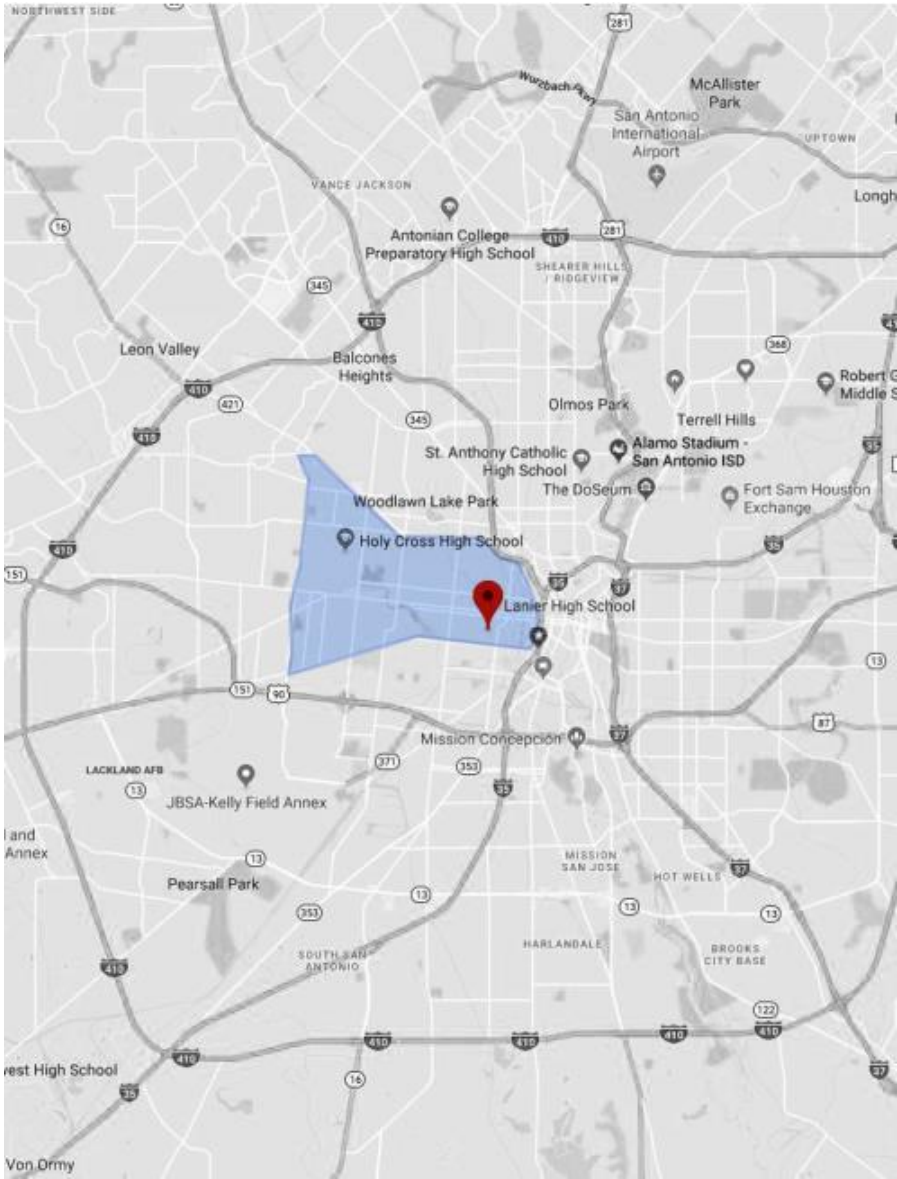


Lanier High School Westside of San Antonio, TX

Lanier High School was founded in 1915 in San Antonio, TX's Westside neighborhood. The current facility was constructed in 1975, with a rush of murals painted within the building shortly thereafter.



Lanier High School
Westside of San Antonio, TX





Community Parallels

Mural Culture

Demographics + Generational Residents

Social Climate

Stakeholder Engagement

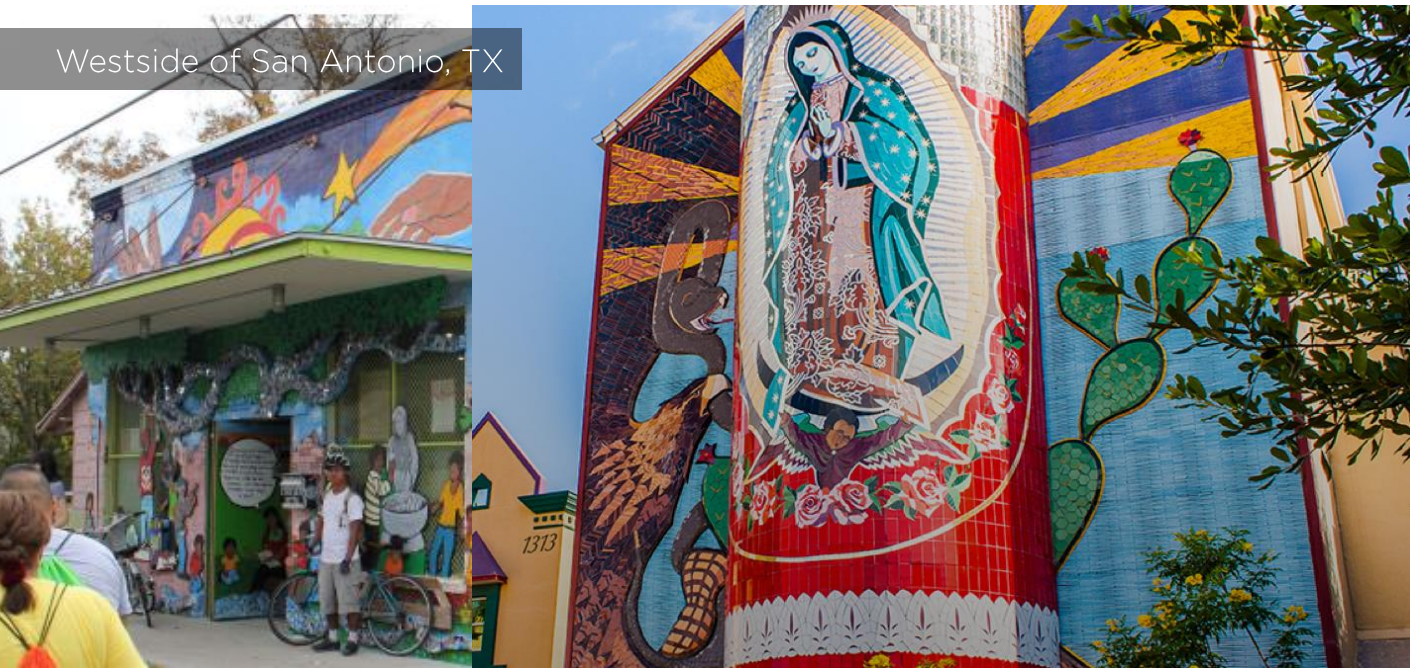
Community Advocates

Key Specialists

Boyle Heights, CA



Westside of San Antonio, TX



Mural Culture

- Permanence
- Communication
- Pride
- Identity



Demographics + Generational Residents

- Ethnicity
- Socioeconomics
- Alumni



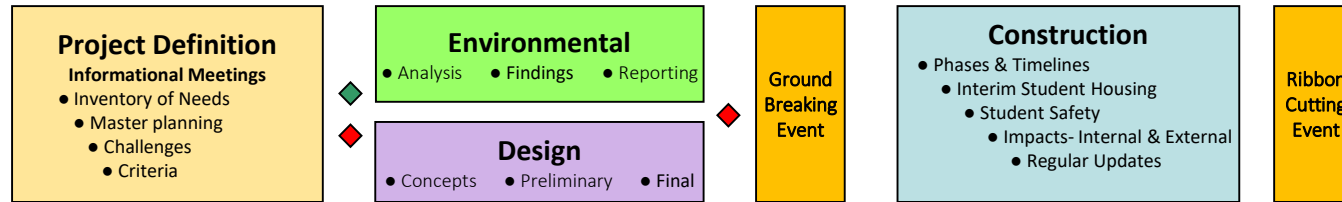
Social Climate

- 1968 East LA Walkouts
- Nationwide movement demanding equal opportunities and facilities
- Walkouts at LAUSD inspired threats of walkouts at SAISD
- Threats of Gentrification

Roosevelt - Stakeholder Engagement



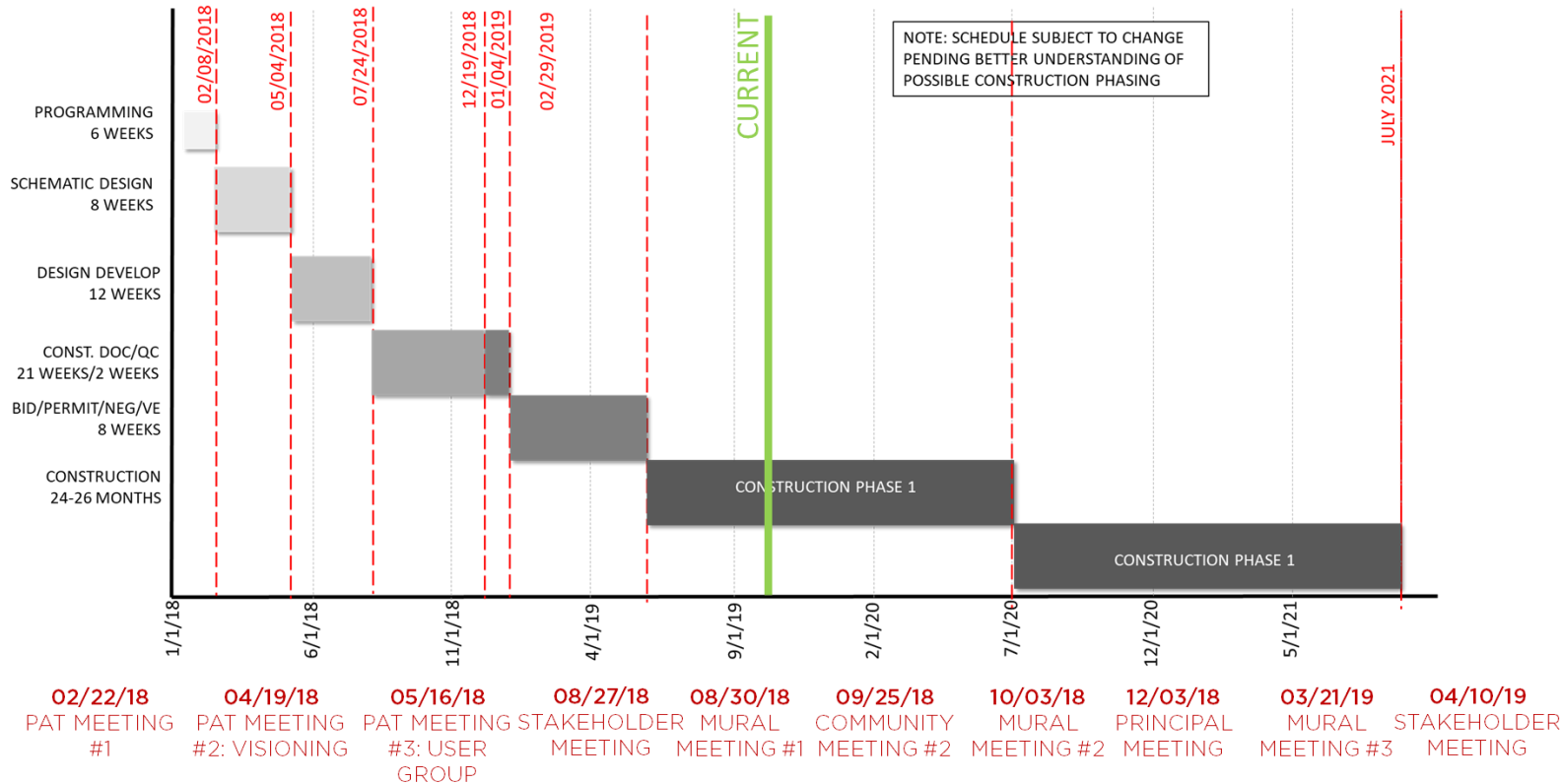
Community Engagement Process throughout the Life of a Project



- Project Identification Community Meeting - May 11, 2015
- Project Definition Project Advisory Group - Nov 4, 2015
- Project Definition Faculty Briefing - Nov 4, 2015
- Project Definition Community Meeting - Nov 9, 2015
- Planning Concepts Faculty Briefing - Nov 1 & 15, 2016
- Planning Concepts Project Advisory Group - Nov 16, 2016
- Planning Concepts Community Meeting - Nov 30, 2016
- Design Update Project Advisory Group - Oct 17, 2017
- Design Update Faculty Briefing - Oct 24, 2017
- Design Update Community Meeting - Nov 1, 2017
- Town Hall Meeting - Feb 3, 2018
- Boyle Heights Planning and Land Use Committee - Feb 8, 2018
- Student Assembly - Feb 15, 2018
- Draft Environmental Impact Report Community Meeting - Feb 21, 2018
- Roosevelt High School Alumni Foundation - Mar 17, 2018
- Boyle Heights Planning and Land Use Committee - Mar 28, 2018
- Pre-Construction Community Meeting - Aug 16, 2019
- Project Advisory Group Update Meeting - Mar 12, 2019



Lanier - Stakeholder Engagement



FOCUSED STAKEHOLDER MEETINGS

Goal: Seek **diverse** opinions from a multitude of stakeholders to inform **specific** design decisions.. Includes Students, Content Experts, Staff, Community Leaders, Alumni, Facilities

LARGE COMMUNITY MEETINGS

Goal: Seek **transparency** through an **honest** discussion with larger community. **Identify** sensitive community issues that will shape the success of the project.



Community Advocates

The project teams benefitted greatly from the support of notable figures from within the community. These advocates became translators—trusted by residents to represent their best interests and relied upon by the design team to gain this understanding.



1969 RHS Yearbook



Community Advocates

- Candy Tanamachi,
RHS Alumni Foundation President
- Rudy Trevino
Previous Lanier Art Chair, Mural Director





Key Specialists

Both LAUSD and SAISD involved experts to serve as a conduit to the community and to help guide design approach.

Roosevelt High School Japanese Garden Landscape Architect

The Japanese Garden of Peace has a long-standing and important history on the Roosevelt campus.

Keiji Uesugi is not only a renown Japanese Garden Landscape Architect but also a member of Tenrikyo Church in the neighborhood.





Lanier High School Original Muralists

The design team worked with the original muralists (teachers and students) to co-identify the most significant murals amongst the collection. The team then worked together to select a suitable mural facsimile material to install on the wall.



Project Parallels

Project Timeline

Need




Murals

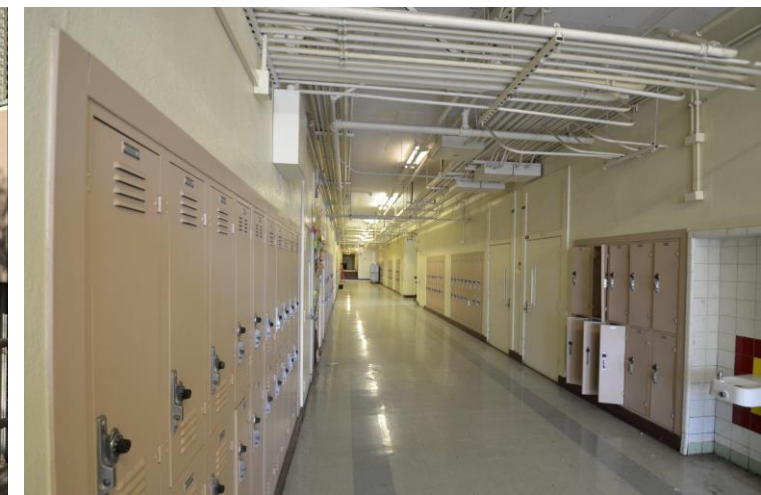


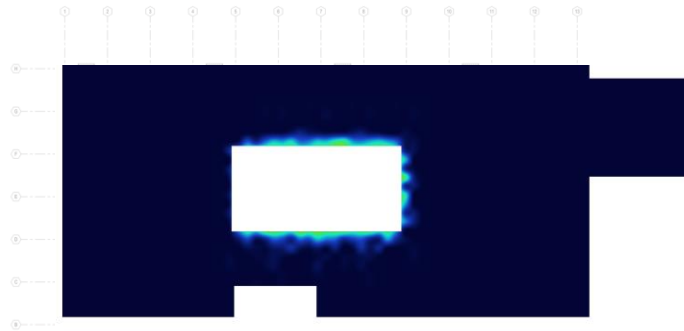
Roosevelt Facilities Assessment

- Significant seismic issues - 5 buildings needed upgrades
- Building configuration did not accommodate standard classroom sizes
- 21% of classrooms were in portables
- Accessibility constraints

KEY

-  HISTORIC BUILDING
-  BUILDING W/ SEISMIC EVALUATIONS
-  PORTABLES
-  OTHER CRITICAL CONDITIONS





USER RESPONSES

- 4 Inflexible Furniture
- 3 Poor Outlet Layout Limits Layouts
- 2 Inadequate Room size
- 2 Inadequate Technology
- 2 Lack of Storage
- 2 Lack of Display Space
- 1 Poor Wifi



Lanier Facilities Assessment

- 200,000 SF, 19 Entries, 0 Windows
- Inflexible Learning Spaces
- Asbestos containing material prevalent throughout
- Outdated Technology
- Rusting Roof Deck
- Low Moral; No Love for the Building!



User Experience
Community



Health + Wellness
Safety



Sustainability
Daylighting





Murals

- Content
- Authors | Artists
- Locations
- Documentation





Design Solutions

Despite the similarities between projects, Roosevelt High School and Lanier High School had different solutions for bringing their learning environments into the next generation while honoring the history and culture of their communities.

The Districts also employed different approaches to memorializing existing campus murals.

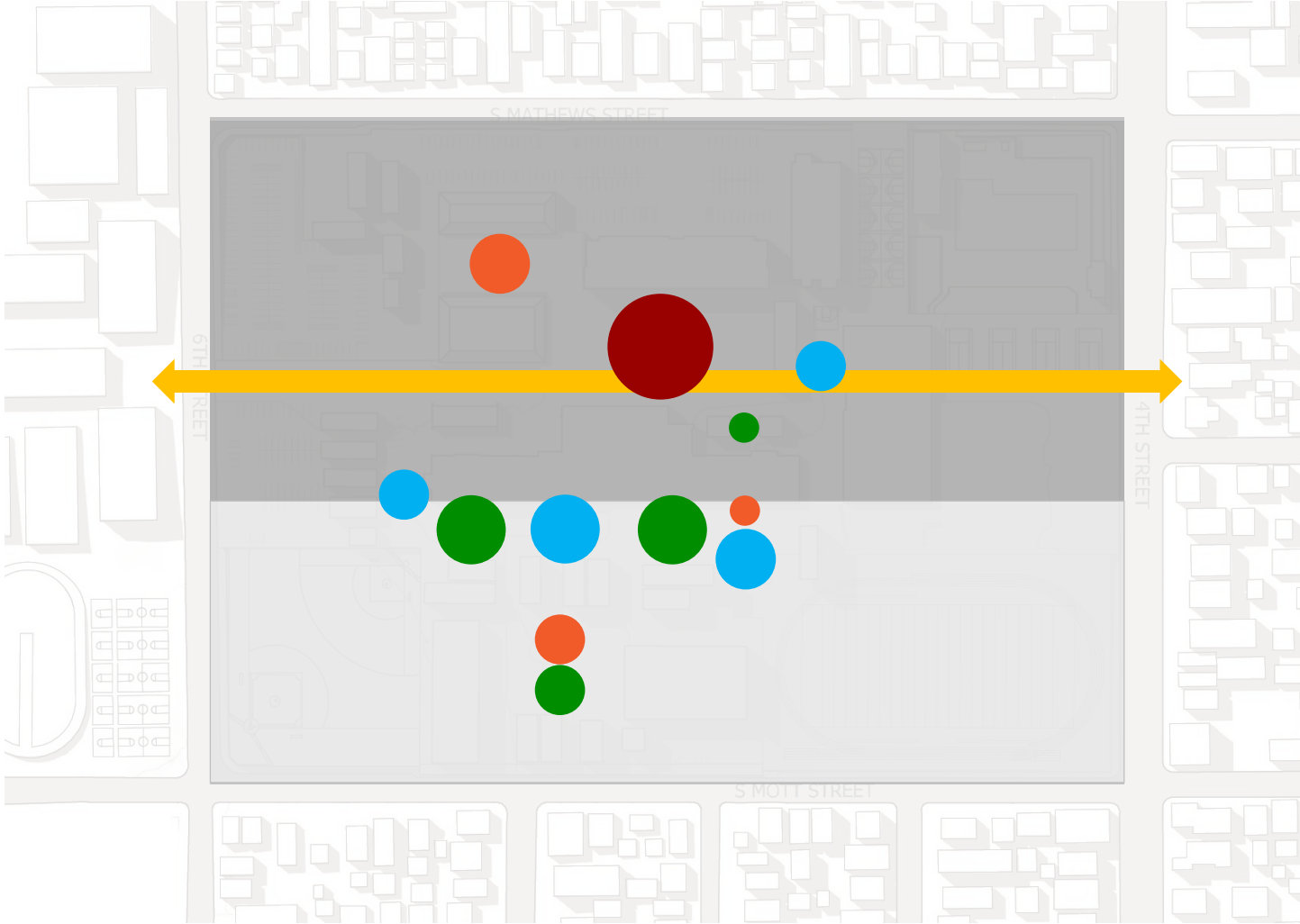
Roosevelt High School

District Decisions + Design Solutions





The new design of Roosevelt High School consists of a series of portals—moments of vibrant color, lined with student and community authored murals. They bookend each public campus edge, highlight student activity, establish a sense of identity and connect the school to its cultural roots.



appreciate + organize + recreate + celebrate





-  new construction
-  existing building to remain
-  limit of work
-  future expansion area

- ① main entry
- ② promenade
- ③ quad
- ④ lunch shelter
- ⑤ lindbergh fountain
- ⑥ garden of peace
- ⑦ fields + hardcourts
- ⑧ parking



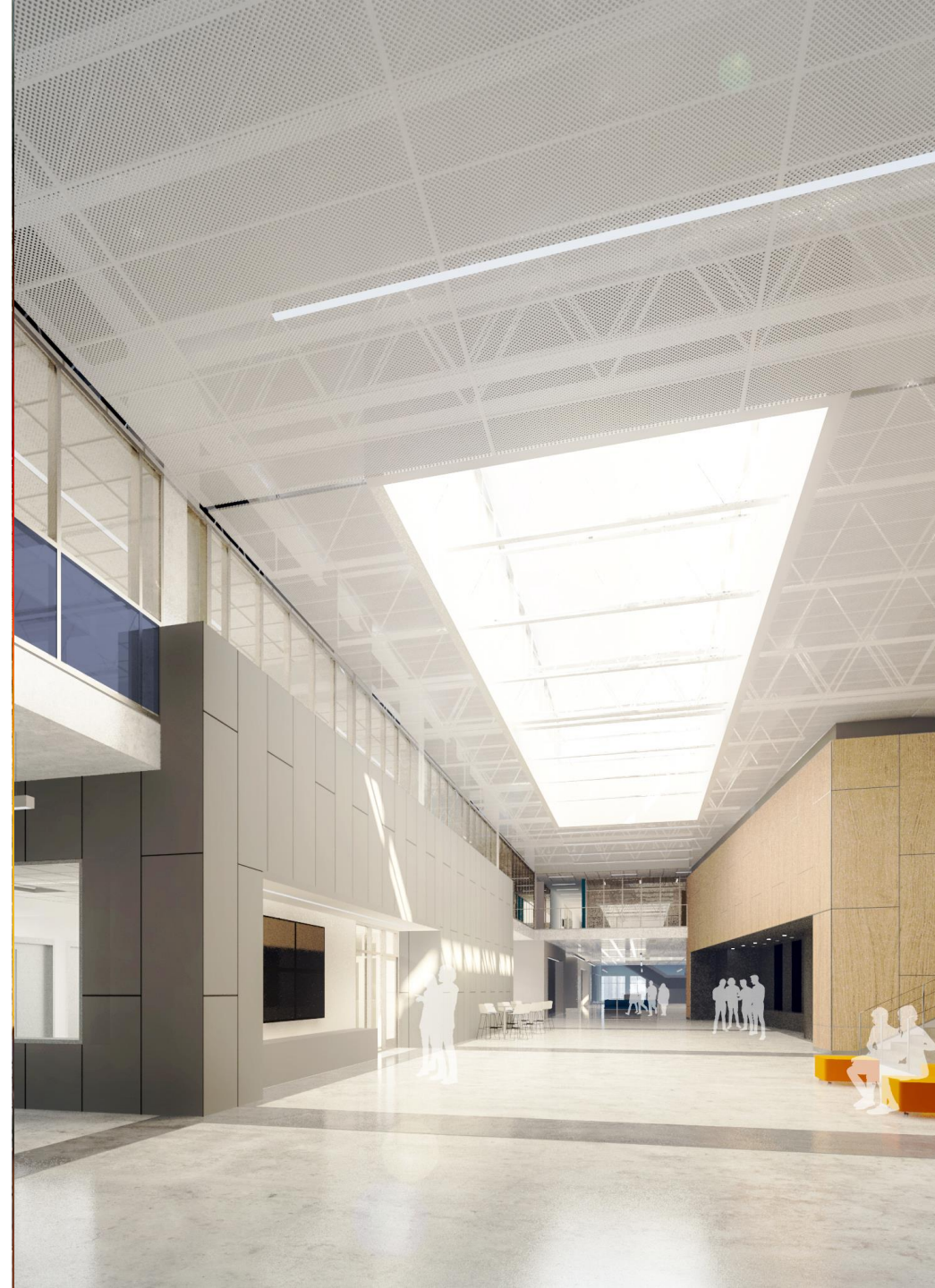


Roosevelt High School | Main Entry

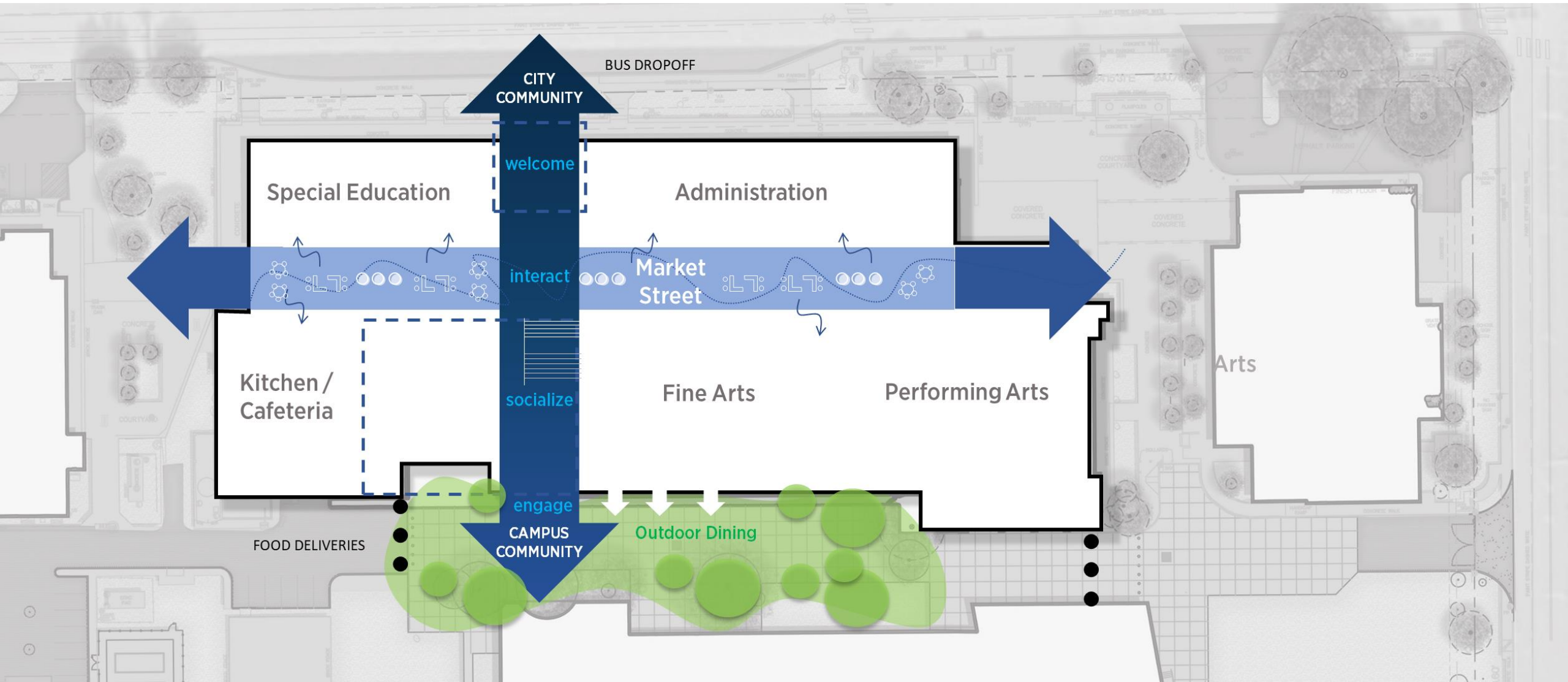
Lanier High School

District Decisions + Design Solutions

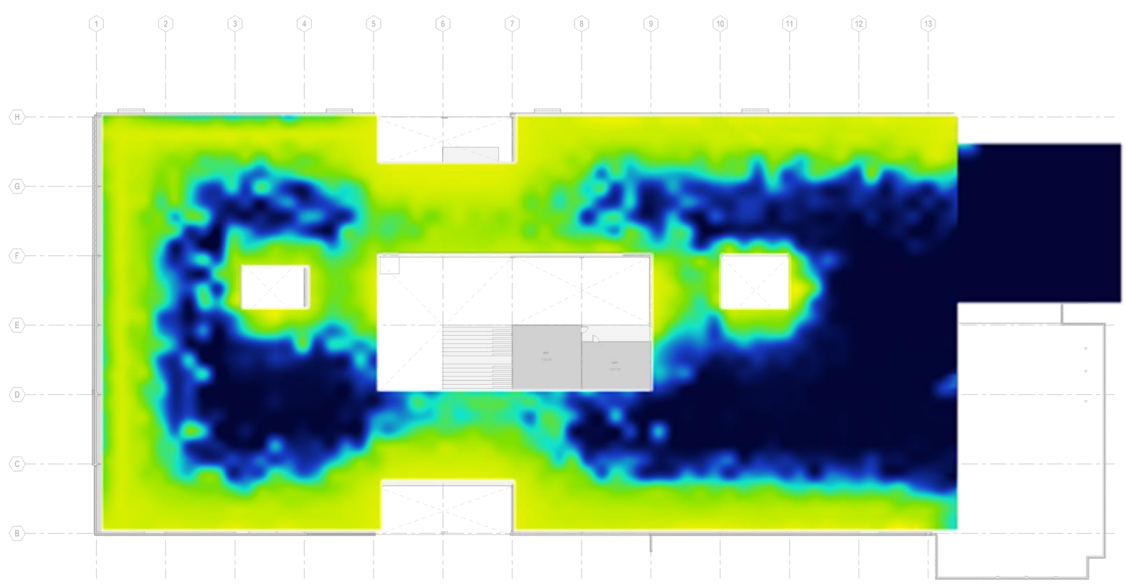
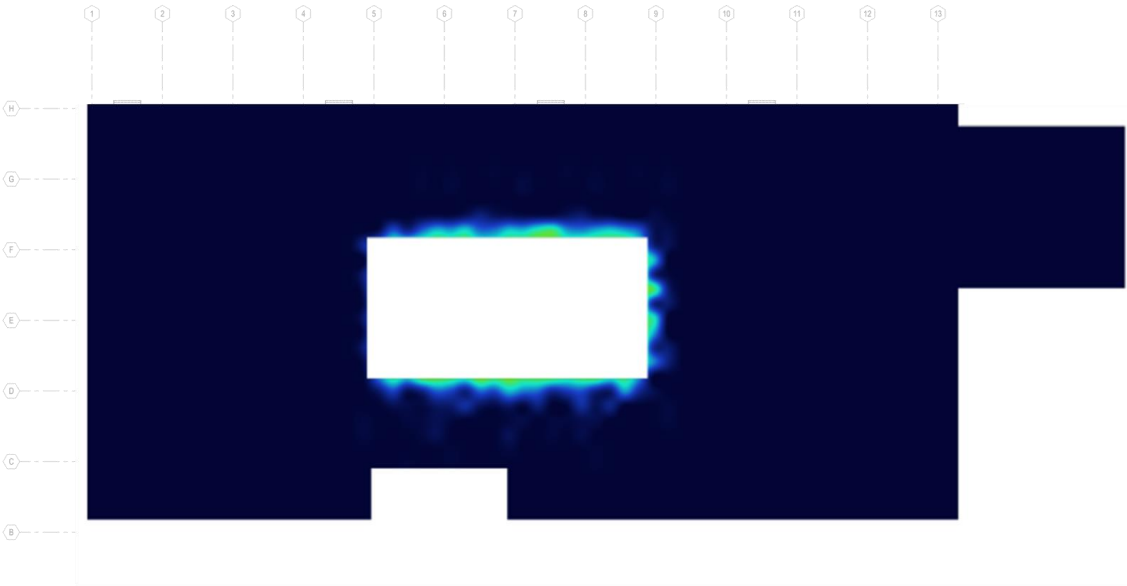
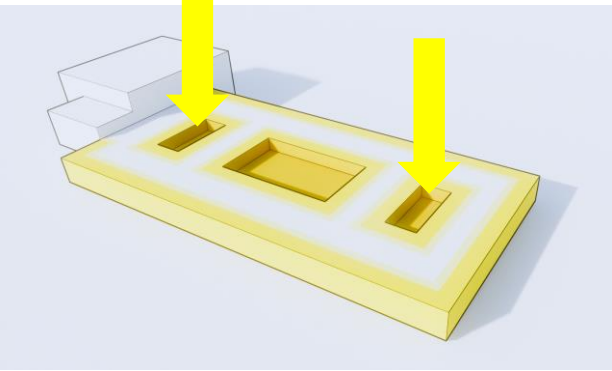
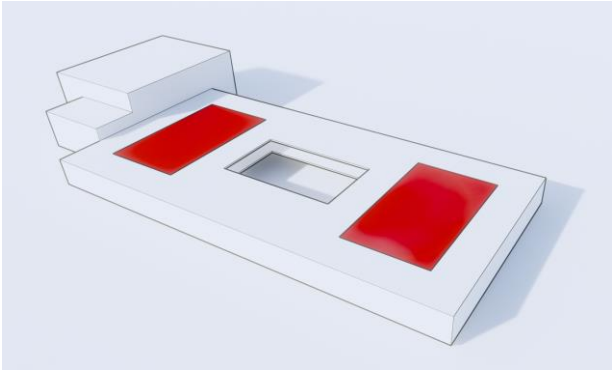
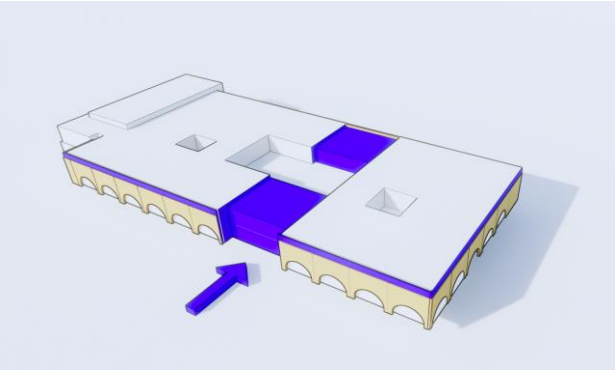
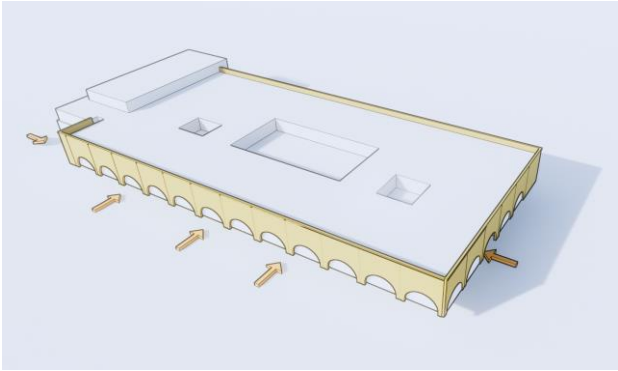
The new design of Lanier High School leverages light to illuminate the schools' embedded potential.

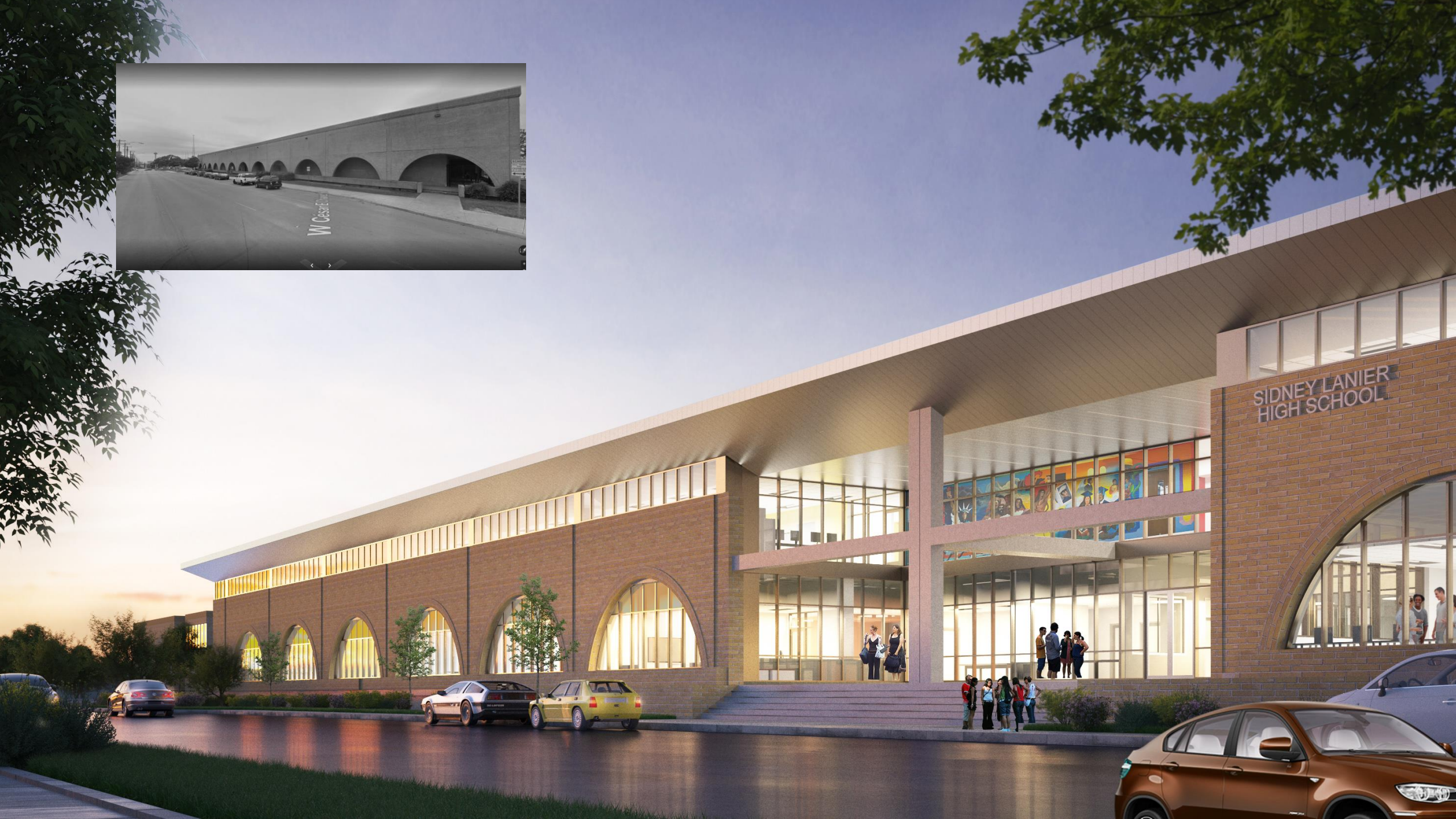


Lanier High School



Lanier High School







Lanier High School

District Decisions + Design Solutions

The district employed a “Three-Pronged Approach”

Recreate Significant Murals

Create a “Digital Mural Museum”

Designate room for “New Murals”

The district hosted an event to grieve the murals, a “Mural Funeral”









Summary

What did we learn from these projects that we can apply to others moving forward?

Stakeholder processes are individual and unique - be passionate about them!

A research-based approach benefits the community, the facility and all stakeholders.

These are universal problems common in established school district, but solutions should be specific.

